



2001

8127.0

CHARACTERISTICS OF SMALL BUSINESS

AUSTRALIA

EMBARGO: 11.30AM (CANBERRA TIME) TUES 19 MAR 2002

CONTENTS

	page
Notes	2
List of tables	3

CHAPTERS

Introduction	4
Characteristics of small business operators	7
Characteristics of small businesses	39
Home based small business	80

ADDITIONAL INFORMATION

Explanatory notes	104
Appendix: Standard error tables	110
Glossary	112

- For further information about these and related statistics, contact the National Information and Referral Service on 1300 135 070 or Ross Upson on Canberra 02 6252 5644.

NOTES

ABOUT THIS PUBLICATION This publication presents the results of the Characteristics of Small Business Survey which was conducted in June 2001 as a supplementary topic to the Australian Bureau of Statistics (ABS) monthly Labour Force Survey. This household based survey addressed a number of aspects of the operations of small business as well as identifying the characteristics of small business operators. The survey covered all private sector, non-agricultural small businesses. Similar surveys were previously conducted in February 1995, February 1997 and November 1999.

COMMENTS ON THIS PUBLICATION The ABS welcomes comments and suggestions from users recommending data items for inclusion in future surveys. These comments should be addressed to the Director, Service Industries and Small Business Section, Australian Bureau of Statistics, Locked Bag 10, Belconnen ACT 2616.

RELATED PUBLICATIONS Other publications which may be of interest are:

Small Business in Australia, 1999 (Cat. no.1321.0) — biennial

Small Business in Australia, 1999–2000 (Cat. no. 1321.0.55.001) — biennial

Business Use of Information Technology, 1999–2000 (Cat. no. 8129.0) — annual.

UNPUBLISHED STATISTICS More detailed small business statistics from the survey are available on request from the ABS. For example, many of the statistics presented here are available by different cross classifications from the data presented in the publication.

ROUNDING Where figures have been rounded, discrepancies may occur between the sum of component items and the total.

.....

ABBREVIATIONS

ABS	Australian Bureau of Statistics
ABSCQ	Australian Bureau of Statistics Classification of Qualifications
ANZSIC	Australian and New Zealand Standard Industrial Classification
ASCED	Australian Standard Classification of Education
ATO	Australian Taxation Office
FTE	Full-time equivalent
RSE	Relative standard error
SE	Standard error
TNTS	The New Tax System

Dennis Trewin
Australian Statistician

LIST OF TABLES

page

CHARACTERISTICS OF SMALL BUSINESS OPERATORS BY SEX FOR STATES AND TERRITORIES

2.1	Age of operators	13
2.2	Level of highest non-school educational qualification	17
2.3	Hours worked by operators	22
2.4	Australian born and overseas born operators	31
2.5	Number of businesses operated	34

CHARACTERISTICS OF SMALL BUSINESSES BY EMPLOYER SIZE GROUP FOR STATES AND TERRITORIES

3.1	Length of operation by current owner	44
3.2	Number of business operators	53
3.3	Predominance of male and female operators by selected characteristics ...	58
3.4	Use of computers and Internet access	62
3.5	Major uses of the Internet	71

HOME BASED SMALL BUSINESS BY SELECTED CHARACTERISTICS

4.1	Home based small business	81
4.2	Home based operators by sex	83
4.3	Home based operators by States and Territories	86
4.4	Home based small businesses by States and Territories	95

CHAPTER 1

INTRODUCTION

ABOUT THE SURVEY

This publication presents the results of the Characteristics of Small Business Survey which was conducted in June 2001 as a supplementary topic to the monthly Labour Force Survey conducted by the Australian Bureau of Statistics (ABS). This collection was based on a survey of households and addressed a number of aspects of the operations of small business as well as identifying the characteristics of small business operators. The survey covered all private sector, non-agricultural small businesses. Similar surveys were conducted in February 1995, February 1997 and November 1999.

The survey covered those persons who consider their main job or second job as operating their own (non-agricultural) business. The businesses included are those businesses which the owners considered were their main or second job; businesses which were not considered part of the owners' main or second job are excluded from the survey.

ABOUT THIS PUBLICATION

The publication comprises distinct Chapters, each dealing with different components of small businesses:

- Chapter 2 focuses on the characteristics of small business owners;
- Chapter 3 details the characteristics of small businesses; and
- Chapter 4 provides details of the home based small business.

COMPARISONS WITH PREVIOUS CHARACTERISTICS OF SMALL BUSINESS SURVEYS

Where possible, results from both the November 1999 and June 2001 surveys are presented with average annual change measures. Due to the length of time that has elapsed between the two most recent surveys (19 months) and because the snap-shots were taken at different times of the year (June compared to November) the changes in statistics may be difficult to interpret. To assist in this interpretation, average annual change statistics are presented where appropriate.

Results from the February 1997 survey are also referenced in the commentary. Users should note that the November 1999 results presented in this edition incorporate revisions applied to previously published data. The main impact of these revisions was on tables relating to educational attainment (tables 2.2, 4.2 and 4.3), the number of hours worked by small business operators (table 2.3) and major uses of the Internet (table 3.5).

Users should also take care in comparing results from the June 2001 survey with previous Characteristics of Small Business Surveys, as ABS statistical series are being affected to varying degrees by The New Tax System (TNTS) introduced in Australia from 1 July 2000. It is likely that the TNTS may have impacted on the number of small businesses reported for the June 2001 collection, as business operators previously not registered with the Australian Taxation Office (ATO) as a business complied with the new regulations.

COMPARISONS WITH PREVIOUS CHARACTERISTICS OF SMALL BUSINESS SURVEYS *continued*

It should also be noted that the Characteristics of Small Business data was collected as a supplementary topic to the monthly Labour Force Survey. The monthly Labour Force Survey used a redesigned questionnaire for June 2001 containing additional data items and some definitional changes which may have impacted on the data. For example:

- the separate identification of contractors and sub-contractors; and
- educational qualifications now utilise the *Australian Standard Classification of Education (ASCED)*. For further information refer to paragraph 10 of the Explanatory Notes

The *Information Paper: Implementing the Redesigned Labour Force Survey Questionnaire* (Cat. no. 6295.0) contains further information about the questionnaire changes.

DEFINING A SMALL BUSINESS

During 1999 the ABS conducted a review of the way businesses should be defined by size. This review is reported in detail in *Small Business in Australia* (Cat. no. 1321.0). In summary, the review recommended that for statistical purposes, small businesses (excluding agricultural businesses) should be defined on the basis of full-time equivalent (FTE) employment. However, because FTE measures are not available from the monthly Labour Force Survey, the recommended business size categories have been adopted, but based on total employment. This definition is in line with the categories defined in the most recent edition of *Small Business in Australia* (Cat. no. 1321.0) as well as the previous edition of this publication. The categories presented in this publication are as follows:

- non-employing businesses — sole proprietorships and partnerships without employees;
- businesses with 1–4 employees; and
- businesses with 5–19 employees.

Note that because operators of all incorporated businesses are considered employees of that corporation, all incorporated businesses will be classified as employing businesses.

Together, these three groups form the small business category — those businesses employing less than 20 people.

COMPARISONS WITH OTHER ABS DATA

Estimates of the number of businesses operating in Australia can be derived from a number of sources within the ABS. They may relate to a particular point in time or may be presented as an average annual figure. However, these estimates will not always show the same results. Variations will occur because of differing data sources, differing scope and coverage definitions between surveys, as well as variations due to sampling and non-sampling error. These terms are described in the Explanatory Notes.

The estimates of the number of business operators provided in this publication include own account workers (sole proprietors and partners of non-employing businesses); employers (operators of unincorporated employing sole proprietorships and partnerships); as well as working directors of incorporated companies. In other ABS publications, information can be found on numbers of own account workers and employers, but working directors of incorporated companies are generally treated as employees of the business and are not identified as business owners or operators.

COMPARISONS WITH
OTHER ABS DATA *continued*

Users comparing data in this publication with data from other ABS series should do so with care, as other series only relate to employing businesses and do not include details of non-employing businesses.

CHAPTER 2

CHARACTERISTICS OF SMALL BUSINESS OPERATORS

INTRODUCTION

This chapter presents information on Australian small business operators, including data on their age, hours worked, qualifications and operators born in Australia and born overseas.

The term 'business operator' has been used to describe the person or persons who own and run the business. Generally these business operators can be identified as:

- the proprietor of a sole proprietorship;
- the partners of a partnership; or
- the working director(s) of an incorporated company.

There is no standard definition of a small business operator and other ABS publications do not use the term, or provide statistics about small business operators as a group. However, the expression 'small business operator' is one that is often used in research and policy debate and is generally taken to include the above group of people.

Where comparable, estimates of operators from November 1999 (the previous iteration of the survey) and June 2001 are presented in the tables, together with the measures of the average annual rate of change to assist with analysis. Estimates of operators from February 1997 are also referenced in the commentary below.

NUMBER OF OPERATORS

In June 2001 there were an estimated 1,597,200 business operators of the estimated 1,162,000 small businesses in Australia. This represented an average annual growth rate of 9% in the number of small business operators since the previous survey conducted in November 1999. This compares to an average annual growth of 11% in the number of businesses operated.

The reason for the contrasting growth rates between the number of operators and the number of small businesses is that since 1999 there has been strong average annual growth of 14% in the number of single operator businesses compared to the lower growth rate of multi operator businesses over the same period.

This growth should be considered in light of the comment made regarding the implementation and impact of The New Tax System (TNTS). It is likely that the TNTS may have impacted on the number of small businesses reported for the June 2001 collection, as business operators previously not registered with the ATO as a business, complied with the new regulations.

GENDER OF OPERATORS

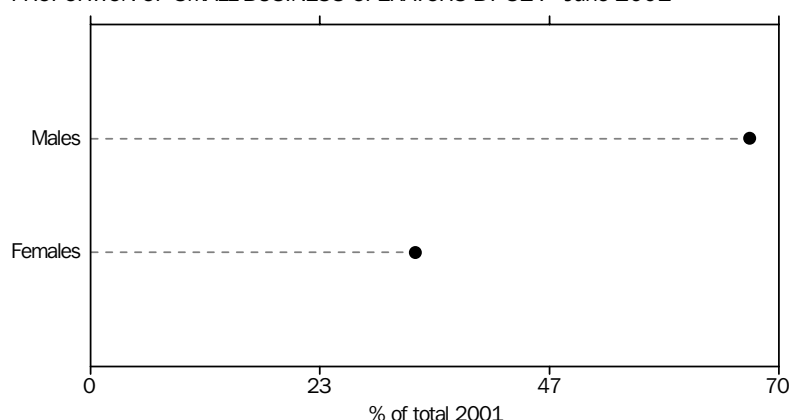
Of the 1,597,200 small business operators, 1,070,300 (67%) were male and 526,900 (33%) were female. Between November 1999 and June 2001 the number of male operators increased 128,600 which represented an average annual growth rate of 8% while over the same period the number of female operators increased by 70,700, representing an average annual increase of 10%. This result represents a turnaround from the slight

GENDER OF OPERATORS

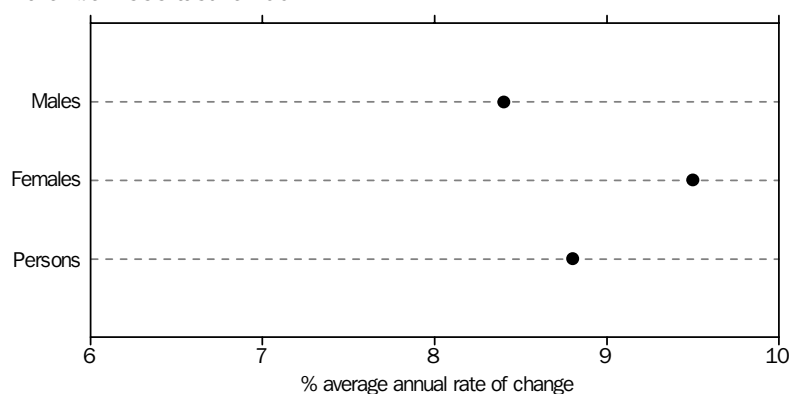
continued

decrease recorded in the number of female operators over the two years February 1997 to November 1999, where the number of female small business operators decreased by an average annual rate of 1%.

PROPORTION OF SMALL BUSINESS OPERATORS BY SEX—June 2001



AVERAGE ANNUAL GROWTH: SMALL BUSINESS OPERATORS BY SEX—November 1999 to June 2001



LOCATION OF OPERATORS

While the distribution of small business operators across States and Territories generally reflected the population distribution, growth between November 1999 and June 2001 varied considerably from one State to the next. Strong growth was recorded in Queensland and South Australia (both up an average annual rate of 14%) and Western Australia and the Australian Capital Territory (both 13%). The Northern Territory recorded the smallest growth at an average annual rate of change of 1%, with New South Wales and Victoria recording average annual growth rates of 7% and 4% respectively.

In Western Australia, the growth was driven by strong growth in the number of female small business operators, with an average annual increase of 17%, the highest of all the States and Territories. In Queensland, strong growth was recorded for both male and female operators, at an average annual rate of 15% and 13% respectively. The Northern Territory, with growth of less than 2% for males and negative growth (0.1%) for females, reported the smallest average annual growth rate. Victoria recorded the lowest growth of the States for both males and females, with average annual growth rates of 4% and 3% respectively.

All States and Territories, apart from Northern Territory, showed growth in the number of female operators, reversing the situation of November 1999 where all States and

LOCATION OF OPERATORS

continued

Territories, except Victoria and the Australian Capital Territory, recorded falling numbers of female operators.

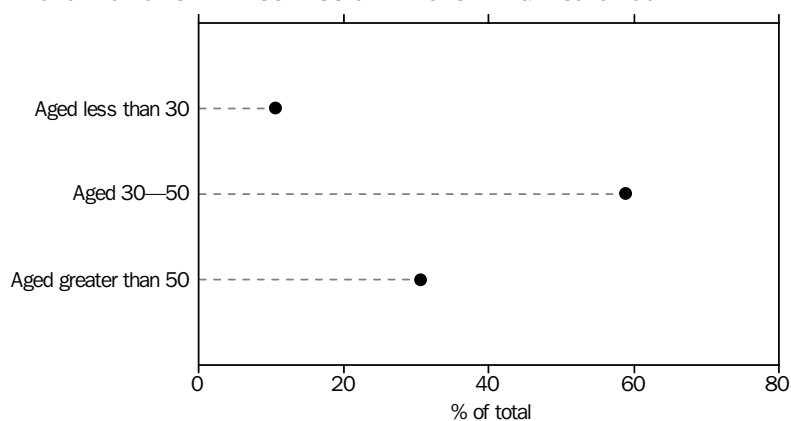
AGE OF OPERATORS

Most small business operators (59%) were aged between 30 and 50 years. The distribution in each age group was as follows:

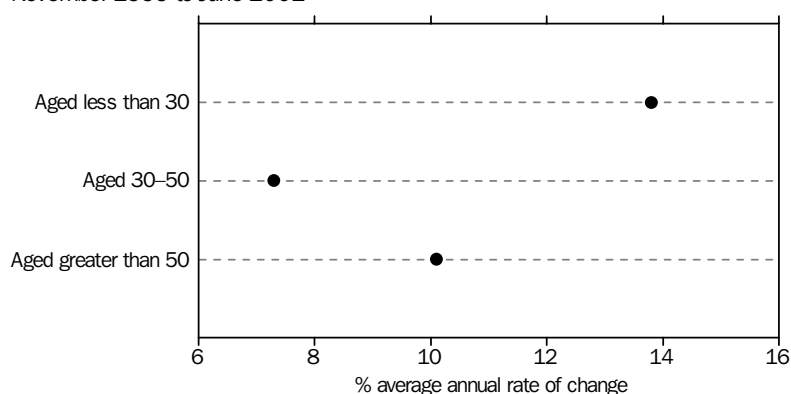
- 169,900 (11%) were less than 30 years old;
- 939,300 (59%) were aged between 30 and 50 years; and
- 488,000 (31%) were aged greater than 50 years.

These data indicate a strong growth in the number of business operators aged less than 30 years old, up by an average annual rate of 14%, and for operators over 50 years old, up by an average annual rate of 10% between November 1999 and June 2001. The number of operators aged between 30 and 50 years increased by an average annual rate of 7% over the same period.

PROPORTION OF SMALL BUSINESS OPERATORS BY AGE—June 2001



AVERAGE ANNUAL GROWTH: SMALL BUSINESS OPERATORS BY AGE—November 1999 to June 2001

*By sex*

The distribution of small business operators by sex across the age groups at June 2001 was:

- for small business operators aged less than 30 years: 65% were male, 35% were female;
- for small business operators aged between 30 years and 50 years: 65% were male, 35% were female; and

By sex continued

- for small business operators aged more than 50 years: 72% were male, 28% were female.

By State

In Queensland, where growth in the number of small business operators was strongest (up by an average annual rate of 14% overall), it was the group aged 30 to 50 years that led this growth (up by an average annual rate 16%) followed by those aged less than 30 years (up by an average annual rate of 15%). The 30 to 50 year age grouping in Queensland was highlighted by an average annual increase of 20% in female operators. This result contrasted with Victoria which recorded the smallest growth of the States (up by an average annual rate of 4%) and a negative average annual change of 1% for operators in the age group 30 to 50.

EDUCATIONAL
QUALIFICATIONS

Note: This publication presents data relating to educational attainment using the new *Australian Standard Classification of Education (ASCED)* (Cat. no. 1272.0). This classification replaces the *ABS Classification of Qualifications (ABSCQ)* used in previous publications.

As shown in table 2.2, at June 2001 the highest educational attainment most commonly held by small business operators was school education accounting for 41% of the total. Small business operators with non-school qualifications at the certificate level were next, recording 38%, with non-school qualifications of advanced diploma or above accounting for 21% of the total.

By sex

The decrease in the proportion of small business operators who had school level education only, is reflected in the proportion of female operators, which dropped from 54% to 50%, while for males the proportion has dropped less than 1%.

The proportion of female operators reporting their highest non-school qualification as certificates was lower than their male counterparts, 27% compared to 44%. The proportion of females was higher for advanced diploma or above, being 24%, compared to 20% for male operators.

In summary, the survey showed that for male small business operators:

- 215,000 (20%) had non-school qualifications of advanced diploma or above;
- 466,400 (44%) had non-school qualifications at a certificate level; and
- 388,800 (36%) had school level education only.

For female small business operators:

- 123,800 (24%) had non-school qualifications of advanced diploma or above;
- 139,900 (27%) had non-school qualifications at a certificate level; and
- 263,300 (50%) had school level education only.

By State

The Australian Capital Territory recorded the highest proportion of non-school qualifications of advanced diploma or above (30%) and the Northern Territory the lowest (12%). The Northern Territory also recorded the highest proportions of small business operators with school level education only (49%). Tasmania had the highest proportion of business operators with a non-school qualification at a certificate level (44%) and Victoria the lowest proportion (34%).

HOURS WORKED BY OPERATORS

Table 2.3 shows details of hours worked by small business operators for both full-time and part-time operators.

Full-time operators

Of the 1.6 million small business operators in Australia at June 2001, just over 1.1 million (71%) were classified as full-time operators; that is, they usually worked 35 or more hours each week in the business. This proportion is similar to that recorded in November 1999 as full-time operators.

Of the full-time operators:

- 46% of all operators usually worked between 35 and 50 hours each week;
- 22% of all operators usually worked between 51 and 75 hours; and
- 3% of all operators usually worked more than 75 hours a week.

This distribution is very similar to that recorded in November 1999.

BY SEX

An estimated 907,700 male small business operators worked full-time (85% of all male operators). Of these, 63% usually worked between 35 and 50 hours a week.

Contrasting with the male operators, only 42% of all female small business operators worked full-time. Again, most female full-time operators (73%) usually worked between 35 and 50 hours a week.

BY STATE

Across the six States, New South Wales recorded the highest proportion of small business operators that were working full-time in their business, with 72% working more than 35 hours per week. Other States recorded about 70% of operators as working full-time, while the Northern Territory recorded the highest incidence of full-time operators at 83%. South Australia recorded the lowest proportion of full-time operators with 67%.

A similar distribution across the hours worked categories was recorded in each of the States and Territories. The Northern Territory recorded the highest proportion (6%) of all operators in the more than 75 hours worked category, as well as the highest proportion (24%) of all operators usually working between 51 and 75 hours per week. The Northern Territory also recorded the highest proportion (53%) of all operators working between 35 and 50 hours per week.

Part-time operators

Part-time operators, who usually worked less than 35 hours a week in their business, constituted 469,300 (29%) of the 1.6 million small business operators in Australia in June 2001, a similar proportion to that recorded in November 1999.

In June 2001 there were 306,800 female small business operators working part-time, an average annual increase of 11% over the 1999 level of 259,700. Males working part-time also increased by an average annual rate of 11%, leaving the proportion of female part-time operators to total part-time operators constant at 65%.

OPERATORS BORN IN AUSTRALIA AND BORN OVERSEAS

Table 2.4 shows details of operators born in Australia and those born overseas. In June 2001, an estimated 464,300 (29%) of small business operators were born overseas. This was a similar proportion to that recorded in November 1999, with operators born overseas increasing at an average annual rate of 8% over the 19 month period.

By sex

An estimated 327,100 (31%) male small business operators were born overseas compared to 137,200 (26%) females. Over the period November 1999 to June 2001 the number of overseas born male and female operators increased by an average annual rate of 7.5% and 7.4% respectively.

By State

The States and Territories with the highest proportion of small business operators who were born overseas were Western Australia (37%), and New South Wales and Northern Territory (both 33%). Tasmania, with 18% of small business operators born overseas, recorded the lowest proportion. Average annual rate increases, for overseas born operators, were recorded in New South Wales (up 6%), Queensland (up 8%), South Australia (up 17%) and Western Australia (up 19%). Tasmania recorded an average annual rate increase of 61%, from 2,800 to 6,000 overseas born operators, although caution is needed in interpreting this increase due to the relatively large standard errors on these estimates. Victoria was the only State recording a decrease at an average annual rate of 2%.

NUMBER OF BUSINESSES OPERATED

Table 2.5 provides data on the number of businesses owned by small business operators at June 2001, classified by age and sex and the number of businesses operated. Most operators (93%) were involved in just the one business; a further 6% were involved in two businesses and 1.7% were involved in three or more businesses.

By sex

Both male and female operators were well represented as multiple business operators, with 7% of each involved in more than one business.

By State

The proportions of operators involved in more than one business remained constant across all the States and Territories, with the Northern Territory recording a slightly higher proportion of persons operating only one business (97% compared to the national average of 93%).

2.1**AGE OF OPERATORS**

	NOVEMBER 1999		JUNE 2001		
	<i>Number of operators</i>	<i>Proportion of operators</i>	<i>Number of operators</i>	<i>Proportion of operators</i>	<i>Average annual rate of change</i>
	'000	%	'000	%	%
.....					
AUSTRALIA					
Males					
Aged less than 30	93.9	10.0	110.8	10.4	11.0
Aged 30–50	554.3	58.9	610.2	57.0	6.3
Aged greater than 50	293.5	31.2	349.3	32.6	11.6
Total	941.7	100.0	1 070.3	100.0	8.4
Females					
Aged less than 30	44.7	9.8	59.1	11.2	19.4
Aged 30–50	286.1	62.7	329.0	62.4	9.2
Aged greater than 50	125.4	27.5	138.8	26.3	6.6
Total	456.2	100.0	526.9	100.0	9.5
Persons					
Aged less than 30	138.6	9.9	169.9	10.6	13.8
Aged 30–50	840.4	60.1	939.3	58.8	7.3
Aged greater than 50	418.9	30.0	488.0	30.6	10.1
Total	1 397.9	100.0	1 597.2	100.0	8.8
.....					
NEW SOUTH WALES					
Males					
Aged less than 30	33.9	10.4	37.6	10.6	6.8
Aged 30–50	188.3	57.9	198.3	55.7	3.3
Aged greater than 50	103.1	31.7	120.1	33.7	10.1
Total	325.2	100.0	356.0	100.0	5.9
Females					
Aged less than 30	13.1	9.4	23.3	14.6	43.8
Aged 30–50	86.5	62.1	95.3	59.9	6.4
Aged greater than 50	39.6	28.5	40.6	25.5	1.5
Total	139.2	100.0	159.2	100.0	8.9
Persons					
Aged less than 30	47.0	10.1	60.9	11.8	17.8
Aged 30–50	274.7	59.2	293.6	57.0	4.3
Aged greater than 50	142.7	30.7	160.7	31.2	7.8
Total	464.4	100.0	515.2	100.0	6.8
.....					
VICTORIA					
Males					
Aged less than 30	19.8	8.1	26.9	10.4	21.4
Aged 30–50	148.0	60.7	144.3	55.5	–1.6
Aged greater than 50	76.1	31.2	88.9	34.2	10.3
Total	243.9	100.0	260.1	100.0	4.1
Females					
Aged less than 30	8.7	7.5	7.2	5.9	–11.2
Aged 30–50	76.8	66.2	78.1	64.6	1.0
Aged greater than 50	30.6	26.4	35.7	29.5	10.1
Total	116.1	100.0	120.9	100.0	2.6
Persons					
Aged less than 30	28.5	7.9	34.1	9.0	12.1
Aged 30–50	224.8	62.4	222.3	58.4	–0.7
Aged greater than 50	106.7	29.6	124.5	32.7	10.3
Total	360.0	100.0	381.0	100.0	3.6

2.1**AGE OF OPERATORS** *continued*

	NOVEMBER 1999		JUNE 2001		Average annual rate of change
	Number of operators	Proportion of operators	Number of operators	Proportion of operators	
	'000	%	'000	%	%
QUEENSLAND					
Males					
Aged less than 30	16.1	9.6	22.5	10.7	23.4
Aged 30–50	100.7	59.8	124.3	59.1	14.3
Aged greater than 50	51.6	30.6	63.6	30.2	14.1
Total	168.3	100.0	210.4	100.0	15.1
Females					
Aged less than 30	11.8	12.2	12.2	10.4	2.3
Aged 30–50	57.5	59.7	76.6	65.6	19.8
Aged greater than 50	27.1	28.1	28.0	24.0	2.1
Total	96.4	100.0	116.8	100.0	12.9
Persons					
Aged less than 30	27.9	10.5	34.7	10.6	14.7
Aged 30–50	158.2	59.7	201.0	61.4	16.3
Aged greater than 50	78.7	29.7	91.6	28.0	10.0
Total	264.7	100.0	327.2	100.0	14.3
SOUTH AUSTRALIA					
Males					
Aged less than 30	8.8	13.6	6.5	8.3	–17.5
Aged 30–50	33.7	52.6	47.3	60.8	23.7
Aged greater than 50	21.7	33.8	24.0	30.9	6.6
Total	64.2	100.0	77.7	100.0	12.8
Females					
Aged less than 30	3.7	10.7	4.3	10.1	11.0
Aged 30–50	20.1	58.9	27.2	63.8	20.9
Aged greater than 50	10.4	30.4	11.1	26.0	4.2
Total	34.2	100.0	42.6	100.0	14.9
Persons					
Aged less than 30	12.4	12.6	10.8	9.0	–8.6
Aged 30–50	53.9	54.8	74.5	61.9	22.7
Aged greater than 50	32.1	32.6	35.1	29.1	5.8
Total	98.4	100.0	120.3	100.0	13.6
WESTERN AUSTRALIA					
Males					
Aged less than 30	11.6	11.3	13.9	11.4	12.4
Aged 30–50	62.0	60.4	70.3	57.7	8.3
Aged greater than 50	29.0	28.3	37.7	30.9	17.9
Total	102.6	100.0	122.0	100.0	11.5
Females					
Aged less than 30	5.9	11.8	8.6	13.4	26.4
Aged 30–50	32.0	63.6	38.6	60.0	12.6
Aged greater than 50	12.4	24.6	17.1	26.6	22.6
Total	50.3	100.0	64.3	100.0	16.7
Persons					
Aged less than 30	17.5	11.5	22.5	12.1	17.2
Aged 30–50	94.0	61.5	108.9	58.5	9.8
Aged greater than 50	41.4	27.1	54.8	29.4	19.3
Total	152.9	100.0	186.3	100.0	13.3

2.1**AGE OF OPERATORS** *continued*

	NOVEMBER 1999		JUNE 2001		Average annual rate of change
	Number of operators	Proportion of operators	Number of operators	Proportion of operators	
	'000	%	'000	%	%
TASMANIA					
Males					
Aged less than 30	*0.8	4.8	*1.3	6.2	29.8
Aged 30–50	10.7	60.2	12.1	58.3	8.1
Aged greater than 50	6.2	35.0	7.4	35.5	11.3
Total	17.8	100.0	20.8	100.0	10.3
Females					
Aged less than 30	*0.7	7.2	1.9	16.6	94.6
Aged 30–50	6.2	65.6	6.6	56.6	4.9
Aged greater than 50	2.5	27.1	3.1	26.8	14.3
Total	9.4	100.0	11.7	100.0	15.2
Persons					
Aged less than 30	1.5	5.6	3.2	9.9	60.4
Aged 30–50	16.9	62.1	18.8	57.7	7.0
Aged greater than 50	8.8	32.3	10.5	32.4	12.2
Total	27.2	100.0	32.5	100.0	12.0
NORTHERN TERRITORY (a)					
Males					
Aged less than 30	1.3	18.3	**0.5	6.5	–47.2
Aged 30–50	4.6	62.4	4.9	64.0	3.5
Aged greater than 50	1.4	19.3	2.2	29.6	33.3
Total	7.4	100.0	7.6	100.0	1.9
Females					
Aged less than 30	**0.2	6.4	**0.5	18.3	93.1
Aged 30–50	2.6	88.1	*1.7	59.0	–22.4
Aged greater than 50	**0.2	5.5	*0.7	22.7	145.5
Total	2.9	100.0	2.9	100.0	–0.1
Persons					
Aged less than 30	1.5	14.9	*1.0	9.8	–22.5
Aged 30–50	7.2	69.7	6.6	62.6	–5.4
Aged greater than 50	1.6	15.4	2.9	27.6	46.9
Total	10.3	100.0	10.5	100.0	1.3

* estimate has a relative standard error of between 25% and 50% and should be used with caution

** estimate has a relative standard error greater than 50% and is considered too unreliable for general use

(a) Refers to mainly urban areas only.

2.1**AGE OF OPERATORS** *continued*

	NOVEMBER 1999		JUNE 2001		Average annual rate of change
	<i>Number of operators</i>	<i>Proportion of operators</i>	<i>Number of operators</i>	<i>Proportion of operators</i>	
	'000	%	'000	%	%
AUSTRALIAN CAPITAL TERRITORY					
Males					
Aged less than 30	1.5	12.4	*1.6	10.3	3.6
Aged 30–50	6.4	52.0	8.7	55.3	21.8
Aged greater than 50	4.4	35.6	5.4	34.4	14.5
Total	12.3	100.0	15.8	100.0	17.0
Females					
Aged less than 30	*0.7	8.9	*1.1	12.6	33.0
Aged 30–50	4.4	57.4	4.9	57.7	6.7
Aged greater than 50	2.6	33.8	2.5	29.6	–2.1
Total	7.7	100.0	8.4	100.0	6.3
Persons					
Aged less than 30	2.2	11.1	2.7	11.1	13.1
Aged 30–50	10.8	54.0	13.6	56.2	15.8
Aged greater than 50	7.0	34.9	7.9	32.7	8.5
Total	20.0	100.0	24.2	100.0	13.0

* estimate has a relative standard error of between 25% and 50% and should be used with caution

2.2**LEVEL OF HIGHEST NON-SCHOOL EDUCATIONAL QUALIFICATION**

	NOVEMBER 1999		JUNE 2001		Average annual rate of change
	<i>Number of operators</i>	<i>Proportion of operators</i>	<i>Number of operators</i>	<i>Proportion of operators</i>	
	'000	%	'000	%	%
AUSTRALIA					
Males					
With non-school qualifications					
Advanced Diploma or above	na	na	215.0	20.1	na
Certificate	na	na	466.4	43.6	na
Without non-school qualifications	343.4	36.5	388.8	36.3	8.2
Total	941.7	100.0	1 070.3	100.0	8.4
Females					
With non-school qualifications					
Advanced Diploma or above	na	na	123.8	23.5	na
Certificate	na	na	139.9	26.5	na
Without non-school qualifications	245.6	53.8	263.3	50.0	4.5
Total	456.2	100.0	526.9	100.0	9.5
Persons					
With non-school qualifications					
Advanced Diploma or above	na	na	338.8	21.2	na
Certificate	na	na	606.3	38.0	na
Without non-school qualifications	589.0	42.1	652.1	40.8	6.6
Total	1 397.9	100.0	1 597.2	100.0	8.8
NEW SOUTH WALES					
Males					
With non-school qualifications					
Advanced Diploma or above	na	na	77.2	21.7	na
Certificate	na	na	151.4	42.5	na
Without non-school qualifications	111.0	34.1	127.4	35.8	9.1
Total	325.2	100.0	356.0	100.0	5.9
Females					
With non-school qualifications					
Advanced Diploma or above	na	na	36.7	23.0	na
Certificate	na	na	47.3	29.7	na
Without non-school qualifications	68.2	49.0	75.3	47.3	6.4
Total	139.2	100.0	159.2	100.0	8.9
Persons					
With non-school qualifications					
Advanced Diploma or above	na	na	113.9	22.1	na
Certificate	na	na	198.6	38.6	na
Without non-school qualifications	179.2	38.6	202.7	39.3	8.1
Total	464.4	100.0	515.2	100.0	6.8

na not available

2.2**LEVEL OF HIGHEST NON-SCHOOL EDUCATIONAL QUALIFICATION** *continued*

	NOVEMBER 1999		JUNE 2001		Average annual rate of change
	<i>Number of operators</i>	<i>Proportion of operators</i>	<i>Number of operators</i>	<i>Proportion of operators</i>	
	'000	%	'000	%	%
VICTORIA					
Males					
With non-school qualifications					
Advanced Diploma or above	na	na	55.4	21.3	na
Certificate	na	na	100.8	38.8	na
Without non-school qualifications	90.0	36.9	103.8	39.9	9.4
Total	243.9	100.0	260.1	100.0	4.1
Females					
With non-school qualifications					
Advanced Diploma or above	na	na	32.9	27.2	na
Certificate	na	na	26.8	22.2	na
Without non-school qualifications	58.3	50.2	61.1	50.6	3.0
Total	116.1	100.0	120.9	100.0	2.6
Persons					
With non-school qualifications					
Advanced Diploma or above	na	na	88.4	23.2	na
Certificate	na	na	127.7	33.5	na
Without non-school qualifications	148.3	41.2	164.9	43.3	6.9
Total	360.0	100.0	381.0	100.0	3.6
QUEENSLAND					
Males					
With non-school qualifications					
Advanced Diploma or above	na	na	33.8	16.1	na
Certificate	na	na	103.5	49.2	na
Without non-school qualifications	62.1	36.9	73.1	34.7	10.8
Total	168.3	100.0	210.4	100.0	15.1
Females					
With non-school qualifications					
Advanced Diploma or above	na	na	26.4	22.6	na
Certificate	na	na	27.9	23.9	na
Without non-school qualifications	59.7	62.0	62.6	53.6	3.0
Total	96.4	100.0	116.8	100.0	12.9
Persons					
With non-school qualifications					
Advanced Diploma or above	na	na	60.2	18.4	na
Certificate	na	na	131.3	40.1	na
Without non-school qualifications	121.9	46.0	135.7	41.5	7.0
Total	264.7	100.0	327.2	100.0	14.3

na not available

2.2**LEVEL OF HIGHEST NON-SCHOOL EDUCATIONAL QUALIFICATION** *continued*

	NOVEMBER 1999		JUNE 2001		Average annual rate of change
	<i>Number of operators</i>	<i>Proportion of operators</i>	<i>Number of operators</i>	<i>Proportion of operators</i>	
	'000	%	'000	%	%
SOUTH AUSTRALIA					
Males					
With non-school qualifications					
Advanced Diploma or above	na	na	12.9	16.6	na
Certificate	na	na	34.4	44.2	na
Without non-school qualifications	28.5	44.4	30.4	39.1	4.2
Total	64.2	100.0	77.7	100.0	12.8
Females					
With non-school qualifications					
Advanced Diploma or above	na	na	9.1	21.3	na
Certificate	na	na	11.8	27.6	na
Without non-school qualifications	20.2	59.2	21.8	51.1	4.7
Total	34.2	100.0	42.6	100.0	14.9
Persons					
With non-school qualifications					
Advanced Diploma or above	na	na	22.0	18.3	na
Certificate	na	na	46.1	38.3	na
Without non-school qualifications	48.7	49.5	52.2	43.4	4.4
Total	98.4	100.0	120.3	100.0	13.6
WESTERN AUSTRALIA					
Males					
With non-school qualifications					
Advanced Diploma or above	na	na	25.8	21.1	na
Certificate	na	na	56.1	46.0	na
Without non-school qualifications	38.9	37.9	40.1	32.9	2.0
Total	102.6	100.0	122.0	100.0	11.5
Females					
With non-school qualifications					
Advanced Diploma or above	na	na	13.2	20.5	na
Certificate	na	na	19.7	30.6	na
Without non-school qualifications	29.3	58.2	31.5	48.9	4.7
Total	50.3	100.0	64.3	100.0	16.7
Persons					
With non-school qualifications					
Advanced Diploma or above	na	na	38.9	20.9	na
Certificate	na	na	75.8	40.7	na
Without non-school qualifications	68.1	44.5	71.5	38.4	3.1
Total	152.9	100.0	186.3	100.0	13.3

na not available

2.2**LEVEL OF HIGHEST NON-SCHOOL EDUCATIONAL QUALIFICATION** *continued*

	NOVEMBER 1999		JUNE 2001		Average annual rate of change
	Number of operators	Proportion of operators	Number of operators	Proportion of operators	
	'000	%	'000	%	%
TASMANIA					
Males					
With non-school qualifications					
Advanced Diploma or above	na	na	4.3	20.9	na
Certificate	na	na	10.7	51.6	na
Without non-school qualifications	6.7	37.6	5.7	27.6	-9.3
Total	17.8	100.0	20.8	100.0	10.3
Females					
With non-school qualifications					
Advanced Diploma or above	na	na	2.6	21.9	na
Certificate	na	na	3.4	29.3	na
Without non-school qualifications	5.6	59.5	5.7	48.8	1.5
Total	9.4	100.0	11.7	100.0	15.2
Persons					
With non-school qualifications					
Advanced Diploma or above	na	na	6.9	21.2	na
Certificate	na	na	14.2	43.5	na
Without non-school qualifications	12.3	45.2	11.4	35.2	-4.3
Total	27.2	100.0	32.5	100.0	12.0

NORTHERN TERRITORY (a)

Males					
With non-school qualifications					
Advanced Diploma or above	na	na	*0.8	10.7	na
Certificate	na	na	3.3	43.1	na
Without non-school qualifications	2.3	31.7	3.5	46.2	29.1
Total	7.4	100.0	7.6	100.0	1.9
Females					
With non-school qualifications					
Advanced Diploma or above	na	na	**0.4	14.1	na
Certificate	na	na	*0.9	31.3	na
Without non-school qualifications	1.5	50.0	*1.6	54.6	5.6
Total	2.9	100.0	2.9	100.0	-0.1
Persons					
With non-school qualifications					
Advanced Diploma or above	na	na	*1.2	11.6	na
Certificate	na	na	4.2	39.8	na
Without non-school qualifications	3.8	36.9	5.1	48.5	20.4
Total	10.3	100.0	10.5	100.0	1.3

na not available

* estimate has a relative standard error of between 25% and 50% and should be used with caution

** estimate has a relative standard error greater than 50% and is considered too unreliable for general use

(a) Refers to mainly urban areas only.

2.2**LEVEL OF HIGHEST NON-SCHOOL EDUCATIONAL QUALIFICATION** *continued*

	NOVEMBER 1999		JUNE 2001		Average annual rate of change
	<i>Number of operators</i>	<i>Proportion of operators</i>	<i>Number of operators</i>	<i>Proportion of operators</i>	
	'000	%	'000	%	%
AUSTRALIAN CAPITAL TERRITORY					
Males					
With non-school qualifications					
Advanced Diploma or above	na	na	4.6	29.4	na
Certificate	na	na	6.3	39.7	na
Without non-school qualifications	3.9	31.3	4.9	30.9	15.9
Total	12.3	100.0	15.8	100.0	17.0
Females					
With non-school qualifications					
Advanced Diploma or above	na	na	2.6	30.6	na
Certificate	na	na	2.1	24.9	na
Without non-school qualifications	2.8	36.9	3.8	44.5	19.7
Total	7.7	100.0	8.4	100.0	6.3
Persons					
With non-school qualifications					
Advanced Diploma or above	na	na	7.2	29.8	na
Certificate	na	na	8.4	34.5	na
Without non-school qualifications	6.7	33.5	8.6	35.6	17.5
Total	20.0	100.0	24.2	100.0	13.0

na not available

2.3**HOURS WORKED BY OPERATORS**

	NOVEMBER 1999		JUNE 2001		Average annual rate of change
	Number of operators	Proportion of operators	Number of operators	Proportion of operators	
	'000	%	'000	%	%
AUSTRALIA					
Males					
1–10 hours worked	35.8	3.8	44.4	4.1	14.6
11–20 hours worked	41.4	4.4	46.8	4.4	8.0
21–34 hours worked	61.2	6.5	71.4	6.7	10.2
Total part-time	138.4	14.7	162.6	15.2	10.7
35–50 hours worked	482.3	51.2	568.6	53.1	11.0
51–75 hours worked	275.2	29.2	300.7	28.1	5.8
More than 75 hours worked	45.7	4.9	38.4	3.6	–10.4
Total full-time	803.3	85.3	907.7	84.8	8.0
Total	941.7	100.0	1 070.3	100.0	8.4
Females					
1–10 hours worked	112.3	24.6	116.5	22.1	2.4
11–20 hours worked	77.6	17.0	97.0	18.4	15.1
21–34 hours worked	69.7	15.3	93.3	17.7	20.2
Total part-time	259.7	56.9	306.8	58.2	11.1
35–50 hours worked	132.8	29.1	160.6	30.5	12.8
51–75 hours worked	49.5	10.8	50.8	9.6	1.6
More than 75 hours worked	14.3	3.1	8.8	1.7	–26.4
Total full-time	196.5	43.1	220.2	41.8	7.4
Total	456.2	100.0	526.9	100.0	9.5
Persons					
1–10 hours worked	148.1	10.6	160.9	10.1	5.4
11–20 hours worked	119.1	8.5	143.8	9.0	12.7
21–34 hours worked	130.9	9.4	164.7	10.3	15.6
Total part-time	398.1	28.5	469.3	29.4	11.0
35–50 hours worked	615.1	44.0	729.2	45.7	11.3
51–75 hours worked	324.7	23.2	351.5	22.0	5.1
More than 75 hours worked	60.0	4.3	47.2	3.0	–14.1
Total full-time	999.8	71.5	1 127.9	70.6	7.9
Total	1 397.9	100.0	1 597.2	100.0	8.8

2.3**HOURS WORKED BY OPERATORS** *continued*

	NOVEMBER 1999		JUNE 2001		Average annual rate of change
	Number of operators	Proportion of operators	Number of operators	Proportion of operators	
	'000	%	'000	%	%
NEW SOUTH WALES					
Males					
1–10 hours worked	11.8	3.6	14.5	4.1	14.1
11–20 hours worked	11.2	3.5	15.6	4.4	23.1
21–34 hours worked	19.3	5.9	16.3	4.6	–10.1
Total part-time	42.3	13.0	46.5	13.0	6.1
35–50 hours worked	180.8	55.6	198.2	55.7	6.0
51–75 hours worked	89.8	27.6	100.0	28.1	7.0
More than 75 hours worked	12.3	3.8	11.4	3.2	–4.7
Total full-time	282.9	87.0	309.6	87.0	5.9
Total	325.2	100.0	356.0	100.0	5.9
Females					
1–10 hours worked	28.7	20.6	37.2	23.4	17.9
11–20 hours worked	22.1	15.9	29.3	18.4	19.5
21–34 hours worked	22.8	16.4	30.5	19.2	20.1
Total part-time	73.6	52.9	97.0	61.0	19.1
35–50 hours worked	43.5	31.3	47.7	29.9	5.9
51–75 hours worked	18.1	13.0	12.9	8.1	–19.3
More than 75 hours worked	*3.9	2.8	**1.6	1.0	–43.4
Total full-time	65.6	47.1	62.2	39.0	–3.3
Total	139.2	100.0	159.2	100.0	8.9
Persons					
1–10 hours worked	40.4	8.7	51.7	10.0	16.8
11–20 hours worked	33.4	7.2	45.0	8.7	20.8
21–34 hours worked	42.1	9.1	46.8	9.1	6.9
Total part-time	115.9	25.0	143.5	27.9	14.4
35–50 hours worked	224.3	48.3	245.9	47.7	6.0
51–75 hours worked	108.0	23.2	112.9	21.9	2.9
More than 75 hours worked	16.2	3.5	13.0	2.5	–13.2
Total full-time	348.5	75.0	371.7	72.1	4.2
Total	464.4	100.0	515.2	100.0	6.8

* estimate has a relative standard error of between 25% and 50% and should be used with caution

** estimate has a relative standard error greater than 50% and is considered too unreliable for general use

2.3**HOURS WORKED BY OPERATORS** *continued*

	NOVEMBER 1999		JUNE 2001		Average annual rate of change
	Number of operators	Proportion of operators	Number of operators	Proportion of operators	
	'000	%	'000	%	%
VICTORIA					
Males					
1–10 hours worked	7.3	3.0	11.5	4.4	33.3
11–20 hours worked	13.2	5.4	9.9	3.8	–16.5
21–34 hours worked	17.4	7.2	21.5	8.3	14.3
Total part-time	37.9	15.6	42.9	16.5	8.2
35–50 hours worked	119.7	49.1	134.4	51.7	7.6
51–75 hours worked	72.1	29.6	74.3	28.6	1.9
More than 75 hours worked	14.1	5.8	8.4	3.2	–27.8
Total full-time	205.9	84.4	217.1	83.5	3.4
Total	243.9	100.0	260.1	100.0	4.1
Females					
1–10 hours worked	33.2	28.5	26.4	21.8	–13.4
11–20 hours worked	19.9	17.2	24.0	19.8	12.4
21–34 hours worked	16.8	14.5	17.0	14.1	0.7
Total part-time	69.9	60.2	67.4	55.7	–2.3
35–50 hours worked	31.3	27.0	37.1	30.7	11.4
51–75 hours worked	10.7	9.2	13.5	11.2	16.0
More than 75 hours worked	*4.2	3.6	*2.9	2.4	–21.3
Total full-time	46.2	39.8	53.5	44.3	9.7
Total	116.1	100.0	120.9	100.0	2.6
Persons					
1–10 hours worked	40.4	11.2	37.9	9.9	–4.1
11–20 hours worked	33.1	9.2	33.9	8.9	1.4
21–34 hours worked	34.3	9.5	38.6	10.1	7.7
Total part-time	107.8	30.0	110.3	29.0	1.4
35–50 hours worked	151.1	42.0	171.6	45.0	8.4
51–75 hours worked	82.8	23.0	87.8	23.0	3.8
More than 75 hours worked	18.3	5.1	11.3	3.0	–26.3
Total full-time	252.1	70.0	270.6	71.0	4.6
Total	360.0	100.0	381.0	100.0	3.6

* estimate has a relative standard error of between 25% and 50% and should be used with caution

2.3**HOURS WORKED BY OPERATORS** *continued*

	NOVEMBER 1999		JUNE 2001		Average annual rate of change
	Number of operators	Proportion of operators	Number of operators	Proportion of operators	
	'000	%	'000	%	%
QUEENSLAND					
Males					
1–10 hours worked	6.8	4.0	8.0	3.8	11.3
11–20 hours worked	7.4	4.4	10.0	4.7	20.3
21–34 hours worked	10.9	6.5	16.1	7.6	27.7
Total part-time	25.1	14.9	34.1	16.2	21.2
35–50 hours worked	76.8	45.6	104.9	49.9	21.7
51–75 hours worked	55.9	33.2	62.3	29.6	7.1
More than 75 hours worked	10.5	6.2	9.0	4.3	–8.9
Total full-time	143.2	85.1	176.3	83.8	14.0
Total	168.3	100.0	210.4	100.0	15.1
Females					
1–10 hours worked	25.1	26.1	23.7	20.3	–3.8
11–20 hours worked	16.9	17.5	21.7	18.6	17.3
21–34 hours worked	13.4	13.9	20.3	17.4	30.1
Total part-time	55.4	57.5	65.7	56.3	11.3
35–50 hours worked	26.8	27.8	37.7	32.3	24.1
51–75 hours worked	10.3	10.7	11.2	9.6	5.5
More than 75 hours worked	*3.9	4.0	*2.2	1.8	–30.7
Total full-time	41.0	42.5	51.1	43.7	15.0
Total	96.4	100.0	116.8	100.0	12.9
Persons					
1–10 hours worked	31.9	12.1	31.7	9.7	–0.5
11–20 hours worked	24.3	9.2	31.7	9.7	18.2
21–34 hours worked	24.3	9.2	36.4	11.1	29.0
Total part-time	80.6	30.4	99.8	30.5	14.5
35–50 hours worked	103.6	39.1	142.6	43.6	22.4
51–75 hours worked	66.2	25.0	73.6	22.5	6.9
More than 75 hours worked	14.3	5.4	11.2	3.4	–14.4
Total full-time	184.2	69.6	227.4	69.5	14.2
Total	264.7	100.0	327.2	100.0	14.3

* estimate has a relative standard error of between 25% and 50% and should be used with caution

2.3**HOURS WORKED BY OPERATORS** *continued*

	NOVEMBER 1999		JUNE 2001		Average annual rate of change
	Number of operators	Proportion of operators	Number of operators	Proportion of operators	
	'000	%	'000	%	%
SOUTH AUSTRALIA					
Males					
1–10 hours worked	*2.1	3.3	3.5	4.5	37.2
11–20 hours worked	3.6	5.5	3.7	4.8	2.7
21–34 hours worked	4.5	7.1	5.9	7.5	17.5
Total part-time	10.2	16.0	13.1	16.9	16.9
35–50 hours worked	31.5	49.1	41.5	53.4	19.0
51–75 hours worked	18.8	29.3	20.2	26.0	4.7
More than 75 hours worked	3.6	5.6	*2.9	3.7	–12.9
Total full-time	53.9	84.0	64.6	83.1	12.1
Total	64.2	100.0	77.7	100.0	12.8
Females					
1–10 hours worked	7.8	22.7	8.4	19.7	5.1
11–20 hours worked	6.6	19.4	8.2	19.2	13.9
21–34 hours worked	5.3	15.6	9.9	23.1	47.4
Total part-time	19.8	57.8	26.4	62.0	20.2
35–50 hours worked	9.0	26.2	11.1	26.0	14.5
51–75 hours worked	4.8	14.1	4.5	10.5	–4.5
More than 75 hours worked	**0.7	1.9	**0.6	1.4	–5.7
Total full-time	14.4	42.2	16.2	38.0	7.5
Total	34.2	100.0	42.6	100.0	14.9
Persons					
1–10 hours worked	9.9	10.1	11.9	9.9	12.5
11–20 hours worked	10.2	10.4	11.9	9.9	10.1
21–34 hours worked	9.9	10.0	15.7	13.1	34.1
Total part-time	30.0	30.5	39.5	32.9	19.1
35–50 hours worked	40.4	41.1	52.6	43.7	18.0
51–75 hours worked	23.6	24.0	24.7	20.5	2.8
More than 75 hours worked	4.3	4.3	3.5	2.9	–11.8
Total full-time	68.4	69.5	80.8	67.1	11.1
Total	98.4	100.0	120.3	100.0	13.6

* estimate has a relative standard error of between 25% and 50% and should be used with caution

** estimate has a relative standard error greater than 50% and is considered too unreliable for general use

2.3**HOURS WORKED BY OPERATORS** *continued*

	NOVEMBER 1999		JUNE 2001		Average annual rate of change
	Number of operators	Proportion of operators	Number of operators	Proportion of operators	
	'000	%	'000	%	%
WESTERN AUSTRALIA					
Males					
1–10 hours worked	5.8	5.7	5.2	4.2	–7.1
11–20 hours worked	4.3	4.2	6.0	4.9	24.6
21–34 hours worked	6.7	6.6	8.9	7.3	19.7
Total part-time	16.8	16.4	20.1	16.5	12.2
35–50 hours worked	55.5	54.1	65.5	53.7	11.0
51–75 hours worked	26.7	26.0	32.2	26.4	12.7
More than 75 hours worked	3.6	3.5	4.1	3.4	8.1
Total full-time	85.8	83.6	101.8	83.5	11.4
Total	102.6	100.0	122.0	100.0	11.5
Females					
1–10 hours worked	13.1	26.1	16.5	25.7	15.7
11–20 hours worked	7.6	15.0	10.8	16.9	25.6
21–34 hours worked	9.4	18.6	10.6	16.5	8.3
Total part-time	30.0	59.7	38.0	59.1	16.0
35–50 hours worked	15.3	30.4	18.5	28.8	12.9
51–75 hours worked	3.9	7.7	6.4	10.0	37.8
More than 75 hours worked	*1.1	2.2	*1.3	2.0	11.5
Total full-time	20.3	40.3	26.3	40.9	17.8
Total	50.3	100.0	64.3	100.0	16.7
Persons					
1–10 hours worked	18.9	12.4	21.7	11.7	9.0
11–20 hours worked	11.8	7.7	16.9	9.1	25.3
21–34 hours worked	16.1	10.5	19.6	10.5	13.1
Total part-time	46.8	30.6	58.1	31.2	14.6
35–50 hours worked	70.8	46.3	84.0	45.1	11.4
51–75 hours worked	30.6	20.0	38.7	20.8	16.0
More than 75 hours worked	4.7	3.1	5.4	2.9	8.9
Total full-time	106.1	69.4	128.1	68.8	12.7
Total	152.9	100.0	186.3	100.0	13.3

* estimate has a relative standard error of between 25% and 50% and should be used with caution

2.3**HOURS WORKED BY OPERATORS** *continued*

	NOVEMBER 1999		JUNE 2001		Average annual rate of change
	Number of operators	Proportion of operators	Number of operators	Proportion of operators	
	'000	%	'000	%	%
TASMANIA					
Males					
1–10 hours worked	*1.0	5.7	*0.7	3.6	–17.6
11–20 hours worked	*0.8	4.6	*0.7	3.2	–11.4
21–34 hours worked	*1.1	6.0	*1.6	7.9	31.1
Total part-time	2.9	16.2	3.0	14.6	3.5
35–50 hours worked	9.0	50.7	11.5	55.1	16.3
51–75 hours worked	5.1	28.5	5.0	24.2	–0.3
More than 75 hours worked	*0.8	4.6	*1.2	6.0	29.7
Total full-time	14.9	83.8	17.7	85.4	11.6
Total	17.8	100.0	20.8	100.0	10.3
Females					
1–10 hours worked	2.4	25.1	2.4	20.4	1.0
11–20 hours worked	2.0	21.8	1.8	15.1	–8.9
21–34 hours worked	*0.7	7.8	2.7	23.3	130.8
Total part-time	5.1	54.7	6.9	58.8	20.5
35–50 hours worked	3.1	32.9	3.6	30.3	9.3
51–75 hours worked	*1.0	10.5	*1.2	9.9	10.9
More than 75 hours worked	**0.2	1.9	**0.1	1.1	–20.3
Total full-time	4.2	45.3	4.8	41.2	8.5
Total	9.4	100.0	11.7	100.0	15.2
Persons					
1–10 hours worked	3.4	12.4	3.1	9.6	–4.4
11–20 hours worked	2.9	10.5	2.4	7.5	–9.6
21–34 hours worked	1.8	6.6	4.4	13.4	75.6
Total part-time	8.0	29.5	9.9	30.6	14.6
35–50 hours worked	12.1	44.6	15.0	46.2	14.5
51–75 hours worked	6.0	22.3	6.2	19.1	1.5
More than 75 hours worked	*1.0	3.7	*1.4	4.2	21.8
Total full-time	19.2	70.5	22.6	69.4	10.9
Total	27.2	100.0	32.5	100.0	12.0

* estimate has a relative standard error of between 25% and 50% and should be used with caution

** estimate has a relative standard error greater than 50% and is considered too unreliable for general use

2.3**HOURS WORKED BY OPERATORS** *continued*

	NOVEMBER 1999		JUNE 2001		Average annual rate of change
	Number of operators	Proportion of operators	Number of operators	Proportion of operators	
	'000	%	'000	%	%
NORTHERN TERRITORY (a)					
Males					
1–10 hours worked	**0.1	1.6	**0.2	3.2	55.7
11–20 hours worked	**0.1	1.5	—	—	na
21–34 hours worked	**0.2	2.4	**0.5	6.0	81.4
Total part-time	**0.4	5.5	*0.7	9.2	40.6
35–50 hours worked	3.3	45.2	4.1	54.0	14.0
51–75 hours worked	3.1	42.5	2.2	28.8	–20.3
More than 75 hours worked	*0.5	6.8	*0.6	8.0	13.3
Total full-time	7.0	94.5	6.9	90.8	–0.6
Total	7.4	100.0	7.6	100.0	1.9
Females					
1–10 hours worked	**0.4	14.4	**0.5	17.9	14.7
11–20 hours worked	*1.0	33.5	**0.3	11.4	–49.3
21–34 hours worked	**0.3	8.6	**0.2	8.3	–2.7
Total part-time	1.7	56.5	*1.1	37.7	–22.7
35–50 hours worked	*0.8	26.9	*1.4	49.1	46.2
51–75 hours worked	**0.3	8.6	**0.4	13.2	30.8
More than 75 hours worked	**0.2	8.0	—	—	na
Total full-time	*1.3	43.5	*1.8	62.3	25.4
Total	2.9	100.0	2.9	100.0	–0.1
Persons					
1–10 hours worked	*0.5	5.3	*0.8	7.3	24.4
11–20 hours worked	*1.1	10.6	**0.3	3.2	–52.6
21–34 hours worked	**0.4	4.2	*0.7	6.6	35.6
Total part-time	2.1	20.1	*1.8	17.1	–8.3
35–50 hours worked	4.1	40.0	5.5	52.6	20.6
51–75 hours worked	3.4	32.8	2.6	24.4	–15.9
More than 75 hours worked	*0.7	7.1	*0.6	5.8	–11.1
Total full-time	8.2	79.9	8.7	82.9	3.7
Total	10.3	100.0	10.5	100.0	1.3

** estimate has a relative standard error greater than 50% and is considered too unreliable for general use

— nil or rounded to zero (including null cells)

na not available

* estimate has a relative standard error of between 25% and 50% and should be used with caution

(a) Refers to mainly urban areas only.

2.3**HOURS WORKED BY OPERATORS** *continued*

	NOVEMBER 1999		JUNE 2001		Average annual rate of change
	Number of operators	Proportion of operators	Number of operators	Proportion of operators	
	'000	%	'000	%	%
AUSTRALIAN CAPITAL TERRITORY					
Males					
1–10 hours worked	*0.9	7.3	*0.7	4.4	–15.0
11–20 hours worked	*0.8	6.4	*0.8	5.3	3.7
21–34 hours worked	*1.0	8.1	*0.5	3.4	–32.4
Total part-time	2.7	21.8	2.1	13.1	–15.2
35–50 hours worked	5.6	45.7	8.5	54.1	30.2
51–75 hours worked	3.6	29.5	4.4	27.9	13.0
More than 75 hours worked	**0.4	3.0	*0.8	4.9	58.7
Total full-time	9.6	78.2	13.7	86.9	25.1
Total	12.3	100.0	15.8	100.0	17.0
Females					
1–10 hours worked	1.7	21.5	*1.4	16.6	–9.8
11–20 hours worked	1.5	19.5	*0.9	10.2	–29.4
21–34 hours worked	*1.0	12.8	2.0	23.4	55.8
Total part-time	4.1	53.8	4.2	50.3	1.8
35–50 hours worked	3.0	39.4	3.4	40.8	8.6
51–75 hours worked	**0.4	5.4	*0.6	7.6	32.4
More than 75 hours worked	**0.1	1.4	**0.1	1.4	3.9
Total full-time	3.5	46.2	4.2	49.7	11.4
Total	7.7	100.0	8.4	100.0	6.3
Persons					
1–10 hours worked	2.6	12.8	2.1	8.7	–11.6
11–20 hours worked	2.3	11.4	1.7	7.0	–17.1
21–34 hours worked	2.0	9.9	2.5	10.4	16.5
Total part-time	6.8	34.1	6.3	26.1	–4.7
35–50 hours worked	8.6	43.3	12.0	49.5	22.9
51–75 hours worked	4.0	20.2	5.0	20.8	15.1
More than 75 hours worked	*0.5	2.4	*0.9	3.6	47.2
Total full-time	13.2	65.9	17.9	73.9	21.5
Total	20.0	100.0	24.2	100.0	13.0

* estimate has a relative standard error of between 25% and 50% and should be used with caution

** estimate has a relative standard error greater than 50% and is considered too unreliable for general use

2.4**AUSTRALIAN BORN AND OVERSEAS BORN OPERATORS**

	NOVEMBER 1999		JUNE 2001		Average annual rate of change
	Number of operators	Proportion of operators	Number of operators	Proportion of operators	
	'000	%	'000	%	
.....					
AUSTRALIA					
Males					
Born in Australia	650.1	69.0	743.2	69.4	8.8
Born overseas	291.6	31.0	327.1	30.6	7.5
Total	941.7	100.0	1 070.3	100.0	8.4
Females					
Born in Australia	333.7	73.1	389.7	74.0	10.3
Born overseas	122.5	26.9	137.2	26.0	7.4
Total	456.2	100.0	526.9	100.0	9.5
Persons					
Born in Australia	983.8	70.4	1 132.9	70.9	9.3
Born overseas	414.1	29.6	464.3	29.1	7.5
Total	1 397.9	100.0	1 597.2	100.0	8.8
.....					
NEW SOUTH WALES					
Males					
Born in Australia	209.3	64.4	233.2	65.5	7.1
Born overseas	115.9	35.6	122.8	34.5	3.7
Total	325.2	100.0	356.0	100.0	5.9
Females					
Born in Australia	100.4	72.2	112.7	70.8	7.5
Born overseas	38.7	27.8	46.5	29.2	12.2
Total	139.2	100.0	159.2	100.0	8.9
Persons					
Born in Australia	309.7	66.7	345.9	67.1	7.2
Born overseas	154.7	33.3	169.3	32.9	5.9
Total	464.4	100.0	515.2	100.0	6.8
.....					
VICTORIA					
Males					
Born in Australia	170.3	69.8	186.2	71.6	5.8
Born overseas	73.6	30.2	73.9	28.4	0.3
Total	243.9	100.0	260.1	100.0	4.1
Females					
Born in Australia	83.5	71.9	92.4	76.4	6.6
Born overseas	32.6	28.1	28.5	23.6	-8.1
Total	116.1	100.0	120.9	100.0	2.6
Persons					
Born in Australia	253.8	70.5	278.5	73.1	6.1
Born overseas	106.2	29.5	102.4	26.9	-2.3
Total	360.0	100.0	381.0	100.0	3.6

2.4**AUSTRALIAN BORN AND OVERSEAS BORN OPERATORS** *continued*

	NOVEMBER 1999		JUNE 2001		Average annual rate of change
	Number of operators	Proportion of operators	Number of operators	Proportion of operators	
	'000	%	'000	%	
.....					
QUEENSLAND					
Males					
Born in Australia	125.9	74.8	159.7	75.9	16.2
Born overseas	42.5	25.2	50.7	24.1	11.8
Total	168.3	100.0	210.4	100.0	15.1
Females					
Born in Australia	70.1	72.7	89.7	76.8	16.9
Born overseas	26.3	27.3	27.1	23.2	1.9
Total	96.4	100.0	116.8	100.0	12.9
Persons					
Born in Australia	196.0	74.0	249.4	76.2	16.5
Born overseas	68.8	26.0	77.8	23.8	8.1
Total	264.7	100.0	327.2	100.0	14.3
.....					
SOUTH AUSTRALIA					
Males					
Born in Australia	48.6	75.7	56.3	72.4	9.7
Born overseas	15.6	24.3	21.4	27.6	22.4
Total	64.2	100.0	77.7	100.0	12.8
Females					
Born in Australia	26.8	78.5	34.5	81.0	17.2
Born overseas	7.3	21.5	8.1	19.0	6.3
Total	34.2	100.0	42.6	100.0	14.9
Persons					
Born in Australia	75.4	76.7	90.8	75.5	12.4
Born overseas	22.9	23.3	29.5	24.5	17.4
Total	98.4	100.0	120.3	100.0	13.6
.....					
WESTERN AUSTRALIA					
Males					
Born in Australia	64.7	63.1	74.6	61.1	9.3
Born overseas	37.9	36.9	47.4	38.9	15.2
Total	102.6	100.0	122.0	100.0	11.5
Females					
Born in Australia	36.4	72.3	43.6	67.8	12.2
Born overseas	14.0	27.7	20.7	32.2	28.1
Total	50.3	100.0	64.3	100.0	16.7
Persons					
Born in Australia	101.1	66.1	118.2	63.5	10.4
Born overseas	51.8	33.9	68.1	36.5	18.8
Total	152.9	100.0	186.3	100.0	13.3

2.4**AUSTRALIAN BORN AND OVERSEAS BORN OPERATORS** *continued*

	NOVEMBER 1999		JUNE 2001		Average annual rate of change
	Number of operators	Proportion of operators	Number of operators	Proportion of operators	
	'000	%	'000	%	
TASMANIA					
Males					
Born in Australia	15.9	89.7	16.8	80.7	3.2
Born overseas	1.8	10.3	4.0	19.3	63.6
Total	17.8	100.0	20.8	100.0	10.3
Females					
Born in Australia	8.4	89.6	9.8	83.3	10.1
Born overseas	*1.0	10.4	2.0	16.7	54.7
Total	9.4	100.0	11.7	100.0	15.2
Persons					
Born in Australia	24.3	89.6	26.5	81.7	5.6
Born overseas	2.8	10.4	6.0	18.3	60.5
Total	27.2	100.0	32.5	100.0	12.0
NORTHERN TERRITORY (a)					
Males					
Born in Australia	5.8	78.6	5.6	73.8	-2.0
Born overseas	1.6	21.4	*2.0	26.2	15.6
Total	7.4	100.0	7.6	100.0	1.9
Females					
Born in Australia	2.1	72.4	*1.5	51.2	-19.7
Born overseas	*0.8	27.6	*1.4	48.8	43.1
Total	2.9	100.0	2.9	100.0	-0.1
Persons					
Born in Australia	7.9	76.8	7.1	67.5	-6.6
Born overseas	2.4	23.2	3.4	32.5	25.3
Total	10.3	100.0	10.5	100.0	1.3
AUSTRALIAN CAPITAL TERRITORY					
Males					
Born in Australia	9.6	77.7	10.9	69.1	8.6
Born overseas	2.7	22.3	4.9	30.9	44.0
Total	12.3	100.0	15.8	100.0	17.0
Females					
Born in Australia	5.9	77.2	5.5	65.4	-4.3
Born overseas	1.7	22.8	2.9	34.6	38.5
Total	7.7	100.0	8.4	100.0	6.3
Persons					
Born in Australia	15.5	77.5	16.4	67.8	3.8
Born overseas	4.5	22.5	7.8	32.2	41.9
Total	20.0	100.0	24.2	100.0	13.0

* estimate has a relative standard error of between 25% and 50% and should be used with caution

(a) Refers to mainly urban areas only.

2.5

NUMBER OF BUSINESSES OPERATED

	NOVEMBER 1999		JUNE 2001 ..		Average annual rate of change
	Number of operators	Proportion of operators	Number of operators	Proportion of operators	
	'000	%	'000	%	%
.....					
AUSTRALIA					
Males					
One business	873.9	92.8	991.7	92.7	8.3
Two businesses	51.9	5.5	58.8	5.5	8.2
Three businesses or more	15.8	1.7	19.8	1.8	15.0
Total	941.7	100.0	1 070.3	100.0	8.4
Females					
One business	426.2	93.4	489.1	92.8	9.1
Two businesses	25.9	5.7	30.0	5.7	9.9
Three businesses or more	4.1	0.9	7.9	1.5	50.7
Total	456.2	100.0	526.9	100.0	9.5
Persons					
One business	1 300.2	93.0	1 480.8	92.7	8.6
Two businesses	77.8	5.6	88.8	5.6	8.7
Three businesses or more	20.0	1.4	27.6	1.7	22.9
Total	1 397.9	100.0	1 597.2	100.0	8.8
.....					
NEW SOUTH WALES					
Males					
One business	307.3	94.5	329.1	92.4	4.4
Two businesses	14.2	4.4	20.5	5.8	26.5
Three businesses or more	*3.8	1.2	*6.3	1.8	38.3
Total	325.2	100.0	356.0	100.0	5.9
Females					
One business	132.0	94.9	146.8	92.2	6.9
Two businesses	6.8	4.9	9.3	5.8	21.9
Three businesses or more	**0.4	0.3	*3.2	2.0	282.7
Total	139.2	100.0	159.2	100.0	8.9
Persons					
One business	439.3	94.6	475.9	92.4	5.2
Two businesses	20.9	4.5	29.8	5.8	25.0
Three businesses or more	*4.2	0.9	9.5	1.8	68.3
Total	464.4	100.0	515.2	100.0	6.8

* estimate has a relative standard error of between 25% and 50% and should be used with caution

** estimate has a relative standard error greater than 50% and is considered too unreliable for general use

2.5NUMBER OF BUSINESSES OPERATED *continued*

	NOVEMBER 1999		JUNE 2001 ..		Average annual rate of change
	Number of operators	Proportion of operators	Number of operators	Proportion of operators	
	'000	%	'000	%	%
VICTORIA					
Males					
One business	224.1	91.9	241.5	92.9	4.9
Two businesses	14.1	5.8	14.1	5.4	0.1
Three businesses or more	5.7	2.3	*4.4	1.7	-14.8
Total	243.9	100.0	260.1	100.0	4.1
Females					
One business	109.1	94.0	113.7	94.1	2.6
Two businesses	5.7	4.9	5.8	4.8	1.1
Three businesses or more	**1.3	1.1	**1.4	1.2	4.2
Total	116.1	100.0	120.9	100.0	2.6
Persons					
One business	333.2	92.6	355.3	93.3	4.1
Two businesses	19.8	5.5	19.9	5.2	0.4
Three businesses or more	7.0	1.9	5.8	1.5	-11.1
Total	360.0	100.0	381.0	100.0	3.6
QUEENSLAND					
Males					
One business	154.1	91.5	193.3	91.9	15.4
Two businesses	11.2	6.6	13.7	6.5	13.4
Three businesses or more	*3.1	1.8	*3.4	1.6	6.7
Total	168.3	100.0	210.4	100.0	15.1
Females					
One business	87.5	90.7	108.3	92.7	14.5
Two businesses	7.8	8.0	6.5	5.6	-10.5
Three businesses or more	**1.2	1.2	*2.0	1.7	39.5
Total	96.4	100.0	116.8	100.0	12.9
Persons					
One business	241.5	91.2	301.6	92.2	15.1
Two businesses	18.9	7.2	20.2	6.2	4.0
Three businesses or more	*4.3	1.6	5.4	1.7	16.3
Total	264.7	100.0	327.2	100.0	14.3

* estimate has a relative standard error of between 25% and 50% and should be used with caution

** estimate has a relative standard error greater than 50% and is considered too unreliable for general use

2.5**NUMBER OF BUSINESSES OPERATED** *continued*

	NOVEMBER 1999		JUNE 2001		Average annual rate of change
	Number of operators	Proportion of operators	Number of operators	Proportion of operators	
	'000	%	'000	%	%
SOUTH AUSTRALIA					
Males					
One business	59.3	92.4	72.4	93.2	13.5
Two businesses	3.9	6.1	*2.9	3.7	-16.9
Three businesses or more	*1.0	1.6	*2.4	3.1	73.8
Total	64.2	100.0	77.7	100.0	12.8
Females					
One business	31.8	92.9	39.9	93.6	15.5
Two businesses	*2.2	6.5	*2.0	4.6	-8.1
Three businesses or more	**0.2	0.6	**0.8	1.8	140.2
Total	34.2	100.0	42.6	100.0	14.9
Persons					
One business	91.0	92.5	112.3	93.3	14.2
Two businesses	6.1	6.2	4.9	4.0	-13.7
Three businesses or more	*1.2	1.2	3.2	2.6	85.6
Total	98.4	100.0	120.3	100.0	13.6
WESTERN AUSTRALIA					
Males					
One business	95.2	92.7	114.6	93.9	12.4
Two businesses	6.1	5.9	4.9	4.0	-12.6
Three businesses or more	*1.3	1.3	*2.5	2.0	46.3
Total	102.6	100.0	122.0	100.0	11.5
Females					
One business	47.5	94.4	59.1	91.9	14.7
Two businesses	*1.9	3.8	4.8	7.5	77.9
Three businesses or more	**0.9	1.7	**0.4	0.6	-36.9
Total	50.3	100.0	64.3	100.0	16.7
Persons					
One business	142.7	93.3	173.7	93.2	13.2
Two businesses	8.0	5.3	9.7	5.2	12.9
Three businesses or more	*2.2	1.4	*2.9	1.5	18.2
Total	152.9	100.0	186.3	100.0	13.3

* estimate has a relative standard error of between 25% and 50% and should be used with caution

** estimate has a relative standard error greater than 50% and is considered too unreliable for general use

2.5**NUMBER OF BUSINESSES OPERATED** *continued*

	NOVEMBER 1999		JUNE 2001 ..		Average annual rate of change
	Number of operators	Proportion of operators	Number of operators	Proportion of operators	
	'000	%	'000	%	%
TASMANIA					
Males					
One business	15.9	89.5	19.0	91.5	11.9
Two businesses	1.6	8.9	*1.3	6.1	-13.2
Three businesses or more	**0.3	1.6	*0.5	2.4	39.0
Total	17.8	100.0	20.8	100.0	10.3
Females					
One business	8.4	89.1	10.6	90.3	16.1
Two businesses	*0.8	8.7	*1.0	8.7	15.1
Three businesses or more	**0.2	2.1	**0.1	1.0	-27.5
Total	9.4	100.0	11.7	100.0	15.2
Persons					
One business	24.3	89.4	29.6	91.1	13.4
Two businesses	2.4	8.8	2.3	7.0	-3.0
Three businesses or more	*0.5	1.8	*0.6	1.9	14.8
Total	27.2	100.0	32.5	100.0	12.0
NORTHERN TERRITORY (a)					
Males					
One business	7.0	95.4	7.5	98.4	3.9
Two businesses	**0.2	2.6	—	—	na
Three businesses or more	**0.1	2.0	**0.1	1.6	-11.0
Total	7.4	100.0	7.6	100.0	1.9
Females					
One business	2.5	85.9	2.7	92.6	4.7
Two businesses	**0.4	14.1	**0.2	7.4	-33.4
Three businesses or more	—	—	—	—	—
Total	2.9	100.0	2.9	100.0	-0.1
Persons					
One business	9.6	92.7	10.2	96.8	4.1
Two businesses	*0.6	5.9	*0.2	2.1	-47.5
Three businesses or more	**0.1	1.4	**0.1	1.2	-11.0
Total	10.3	100.0	10.5	100.0	1.3

* estimate has a relative standard error of between 25% and 50% and should be used with caution

** estimate has a relative standard error greater than 50% and is considered too unreliable for general use

— nil or rounded to zero (including null cells)

na not available

(a) Refers to mainly urban areas only.

2.5**NUMBER OF BUSINESSES OPERATED** *continued*

	NOVEMBER 1999		JUNE 2001		Average annual rate of change
	Number of operators	Proportion of operators	Number of operators	Proportion of operators	
	'000	%	'000	%	%
AUSTRALIAN CAPITAL TERRITORY					
Males					
One business	11.1	90.6	14.3	90.6	17.0
Two businesses	*0.7	5.5	*1.4	8.6	54.7
Three businesses or more	*0.5	3.9	**0.1	0.7	-59.5
Total	12.3	100.0	15.8	100.0	17.0
Females					
One business	7.4	97.0	8.0	94.9	4.8
Two businesses	**0.2	3.0	**0.4	5.1	50.2
Three businesses or more	—	—	—	—	—
Total	7.7	100.0	8.4	100.0	6.3
Persons					
One business	18.6	93.1	22.3	92.1	12.2
Two businesses	*0.9	4.6	1.8	7.4	53.6
Three businesses or more	*0.5	2.4	**0.1	0.5	-59.5
Total	20.0	100.0	24.2	100.0	13.0

* estimate has a relative standard error of between 25% and 50% and should be used with caution

** estimate has a relative standard error greater than 50% and is considered too unreliable for general use

— nil or rounded to zero (including null cells)

CHAPTER 3

CHARACTERISTICS OF SMALL BUSINESSES

INTRODUCTION

This chapter presents selected characteristics of small business operations including details of the ownership structure, business age and the use of computers and the Internet. Data are classified both by State, Territory and business size.

Where comparable, estimates of businesses from November 1999 (the previous iteration of the survey) and June 2001 are presented in the tables, together with measures of the average annual rate of change to assist with analysis.

NUMBER OF BUSINESSES

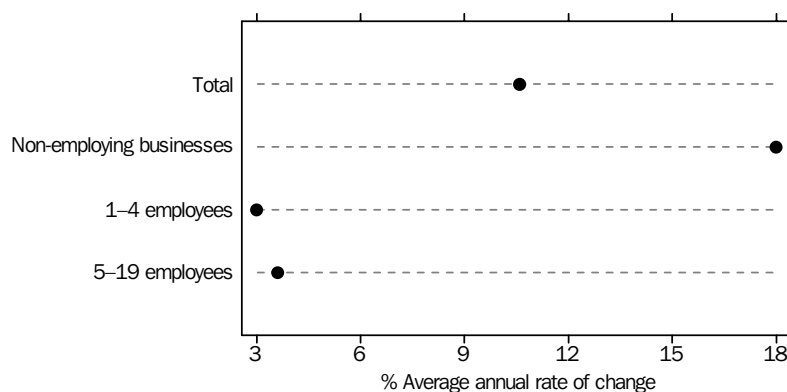
There were an estimated 1,162,000 small businesses operating in Australia in June 2001. This represented an average annual increase of 11% over the 19 month period since November 1999.

Of these 1,162,000 small businesses:

- 637,300 (55%) were non-employing businesses, up by an average annual rate of 18% since November 1999;
- 397,700 (34%) employed 1–4 people, up by an average annual rate of 3% since November 1999; and
- 126,900 (11%) employed 5–19 people, up by an average annual rate of 4% since November 1999.

ABS statistical series are being impacted to varying degrees by The New Tax System (TNTS), introduced in Australia from 1 July 2000. It is likely that TNTS may have impacted on the number of small businesses reported for the June 2001 collection, as business operators previously not registered with the ATO as a business complied with the new regulations.

AVERAGE ANNUAL GROWTH: SMALL BUSINESSES—
November 1999 to June 2001



LOCATION OF OPERATION

Small businesses were distributed across States and Territories in a similar proportion to small business operators, both reflecting the general population distribution within Australia. The strongest average annual growth over the period November 1999 to

LOCATION OF OPERATION

continued

June 2001 was recorded in the Australian Capital Territory (21%), followed by Queensland (17%), Western Australia and South Australia (both 16%), Tasmania (10%), New South Wales (9%), Victoria (5%) and the Northern Territory (1%).

In the Australian Capital Territory the growth was strongest in non-employing businesses, at an average annual rate of 47%. In Queensland, growth was strongest within businesses employing 5–19 people, an average annual rate of 25%, and non-employing businesses up an average annual rate of 24%. Nearly all States recorded strong growth in non-employing businesses, ranging from an average annual growth rate of 24% in Queensland down to 9% in Victoria. The Northern Territory recorded the only negative figure (-3%) for non-employing businesses.

Across all business sizes, negative growth was almost exclusively limited to businesses employing 5–19 people. In the Northern Territory, figures were down an average annual rate of 31%, Australian Capital Territory was down an average annual rate of 15% and New South Wales was down an average annual rate of 5%.

LENGTH OF OPERATION

Table 3.1 also provides details of the length of operation of small businesses. The statistics relate to the business as operated by the current owners. Where an established business has been taken over, the operations of the previous owner have not been taken into account and the length of operation refers to the length of time the business has been operated by the current owner only.

Of the 1,162,000 small businesses operating in Australia at June 2001:

- 14% had been in operation for less than 1 year; up 3% from November 1999;
- 35% had been in operation for 1 year but less than 5 years; up 1% from November 1999;
- 19% had been in operation for 5 years but less than 10 years; down 3% from November 1999; and
- 32% had been in operation for 10 or more years; down 0.5% from November 1999.

By size of business

For non-employing businesses, the highest proportion (39%) were aged 1 to less than 5 years. For businesses employing 1–4 people, the highest proportion was 37% for businesses aged 10 or more years. In the larger size group (businesses employing 5–19 people), businesses were more likely to be older with 50% of businesses falling into the 10 or more years old category.

Across the different business size groups, the most significant changes in the number of businesses over the period November 1999 to June 2001 occurred in the younger businesses, particularly those less than one year old. There was an average annual increase of 52% in the number of non-employing businesses less than one year old and an average annual increase of 23% in non-employing businesses 1 to less than 5 years old.

Decreases were recorded in businesses employing 1–4 people that were less than 1 year old and 5 to less than 10 years old, down an average annual rate of 6% and 3% respectively. Businesses with 5–19 employees that were 1 year to less than 5 years old and 5 years to less than 10 years old, reported an average annual decrease of 4% and 2% respectively.

OPERATORS PER BUSINESS

In June 2001, there were 770,600 (66%) small businesses operating as single operator businesses. This represented an average annual increase in single operator businesses of 14% since November 1999. Numbers of two operator businesses and businesses with three or more operators rose by an average annual rate of 4% and 2% respectively over the same period.

By size of business

As would be expected, the number of people operating small businesses continued to increase on average as the employer size of small business increased.

For non-employing businesses:

- 78% had 1 operator (compared to 75% in November 1999);
- 21% had 2 operators (compared to 24% in November 1999); and
- 0.8% had 3 or more operators (compared to 1.2% in November 1999).

For businesses employing 1–4 people:

- 58% had 1 operator (compared to 57% in November 1999);
- 40% had 2 operators (compared to 41% in November 1999); and
- 2.1% had 3 or more operators (compared to 2.4% in November 1999).

For businesses employing 5–19 people:

- 32% had 1 operator (compared to 34% in November 1999);
- 56% had 2 operators (compared to 55% in November 1999); and
- 12% had 3 or more operators (compared to 11% in November 1999).

By State

There is little variation across States and Territories with the Australian Capital Territory (74%) and New South Wales (68%) recording the highest proportion of small businesses with one operator. The same State and Territory also recorded the lowest proportion of small businesses with two operators, New South Wales (29%) and Australian Capital Territory (23%).

The proportion of small businesses with 3 or more operators was also relatively consistent across States and Territories with the larger States recording around the national average (2.5%). The highest proportions were recorded in Northern Territory (3.6%) and the lowest in Queensland (1.6%).

PREDOMINATE GENDER OF OPERATORS

Of the 1,162,000 small businesses in Australia in June 2001, 631,500 (54%) were operated by an individual male or predominantly by males. This represented an average annual increase of 12% since June 2001.

The next most common ownership structure, with 324,600 businesses (28%), was those operated by equal numbers of males and females. The number of businesses in this group has grown 6%, from the 295,100 businesses recorded in November 1999, reversing the average annual decline of 5% over the 1997 data.

There were a further 205,900 businesses (18%) operated predominantly by females, indicating an average annual growth of 14%.

By size of business

The non-employing business group was the most common business size group for both predominantly male operated businesses (59%) and predominantly female operated

*By size of business**continued*

businesses (70%). Businesses operated by equal numbers of male and female operators were more evenly spread across the three business size categories:

- 37% were non-employing businesses;
- 44% were employing 1–4 people; and
- 19% were employing 5–19 people.

USE OF COMPUTERS AND THE INTERNET

In June 2001 some 773,600 (67%) of the 1,162,000 small businesses reported they were using computers in their business operations. As the size of the business increases, so to the likelihood that a business would have a computer, with 89% of businesses with 5–19 employees having a computer, compared to 56% of non-employing businesses.

Users comparing these results to that of other ABS series should do so with care, as other series only relate to the use of computers and the Internet by employing businesses.

Use of computers

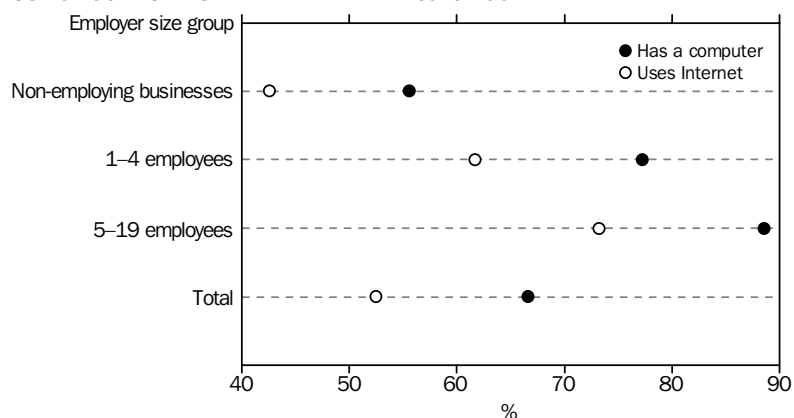
Table 3.4 shows that at June 2001, there was a strong growth in the number of businesses using computers:

- 354,400 (56%) of non-employing businesses had a computer, up from 232,300 (47%) in November 1999;
- 306,900 (77%) of businesses employing 1–4 people had a computer, up from 248,000 (65%) in November 1999; and
- 112,300 (89%) of businesses employing 5–19 people had a computer, up from 101,700 (85%) in November 1999.

Only 609,900 (53%) businesses had access to the Internet. Again, the use of the Internet was more common in the larger businesses:

- 271,500 (43%) of non-employing businesses had access to the Internet, up from 132,900 (27%) in November 1999;
- 245,600 (62%) of businesses employing 1–4 people had access to the Internet, up from 157,700 (42%) in November 1999; and
- 92,900 (73%) of businesses employing 5–19 people had access to the Internet, up from 67,200 (56%) in November 1999.

USE OF COMPUTERS AND THE INTERNET—June 2001



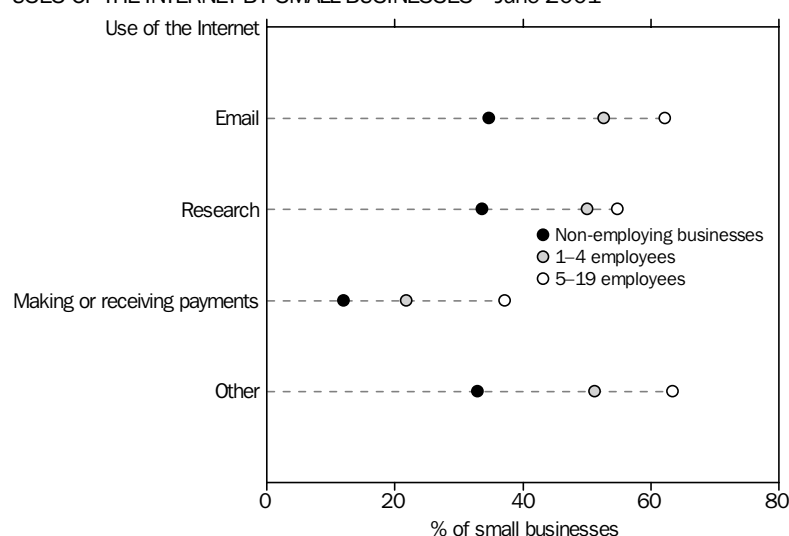
Use of the Internet

The most common usage of the Internet was for email (44% of small businesses, or 83% of businesses with the Internet) and research (42% of small businesses, or 79% of those with the Internet).

At June 2001, there were some 18% (up from only 8% of small businesses in November 1999) involved in direct e-commerce (making or receiving payments via the Internet). Increasing use of e-commerce is reported across all small business sizes:

- 76,300 (12%) of non-employed businesses used e-commerce, up from 24,400 (5%) in November 1999;
- 86,800 (22%) of businesses employing 1–4 people used e-commerce, up from 33,900 (9%) in November 1999; and
- 47,100 (37%) of businesses employing 5–19 people used e-commerce, up from 23,700 (20%) in November 1999.

USES OF THE INTERNET BY SMALL BUSINESSES—June 2001



By State

The proportion of small businesses using computers in their business operations was fairly similar (63%–68%) across most States and Territories. The Australian Capital Territory was a notable exception where 77% of small businesses were using computers, well above the national average of 67%. The Northern Territory and Tasmania recorded the lowest proportions with 63% and 64% respectively of their small businesses using computers. The overall high proportion of Australian Capital Territory small businesses using computers was due mainly to the relatively high proportion of non-employed businesses with computers (75%), well above the national average of 56%.

Access to the Internet across States and Territories followed a similar pattern to computer usage with levels highest in the Australian Capital Territory (65%) and lowest in Victoria, South Australia and the Northern Territory (all 50%).

Uses made of the Internet across States and Territories also followed similar patterns to the national distribution with the most common uses in each State or Territory being email and research. E-commerce involvement (making or receiving payments via the Internet) was strongest in the Australian Capital Territory (29% of small businesses involved) with Victoria, South Australia and Tasmania showing the smallest participation rate with 17%.

3.1

LENGTH OF OPERATION BY CURRENT OWNER

	NOVEMBER 1999		JUNE 2001		Average annual rate of change
	Number of businesses	Proportion of businesses	Number of businesses	Proportion of businesses	
	'000	%	'000	%	
.....					
AUSTRALIA					
Non-employed businesses					
Less than 1 year	60.3	12.3	116.5	18.3	51.5
1 to less than 5 years	179.5	36.6	248.2	38.9	22.7
5 to less than 10 years	106.0	21.6	110.4	17.3	2.6
10 or more years	144.6	29.5	162.3	25.5	7.6
Total	490.3	100.0	637.3	100.0	18.0
1-4 employees					
Less than 1 year	39.6	10.4	36.1	9.1	-5.6
1 to less than 5 years	131.2	34.6	133.4	33.5	1.0
5 to less than 10 years	86.3	22.7	82.4	20.7	-2.9
10 or more years	122.5	32.3	145.9	36.7	11.6
Total	379.6	100.0	397.7	100.0	3.0
5-19 employees					
Less than 1 year	6.4	5.3	7.1	5.6	7.5
1 to less than 5 years	29.7	24.7	28.0	22.0	-3.7
5 to less than 10 years	29.4	24.5	28.7	22.6	-1.6
10 or more years	54.6	45.5	63.1	49.8	9.6
Total	120.1	100.0	126.9	100.0	3.6
Total					
Less than 1 year	106.2	10.7	159.7	13.7	29.4
1 to less than 5 years	340.4	34.4	409.5	35.2	12.4
5 to less than 10 years	221.7	22.4	221.4	19.1	-0.1
10 or more years	321.7	32.5	371.4	32.0	9.5
Total	990.1	100.0	1 162.0	100.0	10.6

3.1**LENGTH OF OPERATION BY CURRENT OWNER** *continued*

	NOVEMBER 1999		JUNE 2001		Average annual rate of change
	Number of businesses	Proportion of businesses	Number of businesses	Proportion of businesses	
	'000	%	'000	%	
NEW SOUTH WALES					
Non-employed businesses					
Less than 1 year	17.8	12.1	39.2	20.4	64.9
1 to less than 5 years	51.7	35.3	77.2	40.2	28.9
5 to less than 10 years	29.7	20.2	28.4	14.8	-2.8
10 or more years	47.4	32.3	47.4	24.6	—
Total	146.5	100.0	192.2	100.0	18.7
1-4 employees					
Less than 1 year	15.4	10.9	11.7	8.0	-15.9
1 to less than 5 years	51.0	35.9	51.4	35.3	0.5
5 to less than 10 years	33.1	23.3	27.1	18.6	-11.9
10 or more years	42.4	29.9	55.6	38.1	18.6
Total	142.0	100.0	145.8	100.0	1.7
5-19 employees					
Less than 1 year	*3.4	7.5	*1.9	4.5	-31.6
1 to less than 5 years	12.4	27.2	11.2	26.6	-6.5
5 to less than 10 years	10.4	22.7	7.1	16.9	-21.0
10 or more years	19.4	42.5	21.9	52.0	7.9
Total	45.7	100.0	42.1	100.0	-5.0
Total					
Less than 1 year	36.6	11.0	52.8	13.9	26.0
1 to less than 5 years	115.2	34.5	139.9	36.8	13.0
5 to less than 10 years	73.2	21.9	62.6	16.5	-9.4
10 or more years	109.2	32.7	124.8	32.8	8.8
Total	334.2	100.0	380.1	100.0	8.5

— nil or rounded to zero (including null cells)

* estimate has a relative standard error of between 25% and 50% and should be used with caution

3.1LENGTH OF OPERATION BY CURRENT OWNER *continued*

	NOVEMBER 1999		JUNE 2001		Average annual rate of change
	Number of businesses	Proportion of businesses	Number of businesses	Proportion of businesses	
	'000	%	'000	%	
.....					
VICTORIA					
Non-employed businesses					
Less than 1 year	12.4	9.6	22.8	15.6	47.0
1 to less than 5 years	44.2	34.4	50.9	34.8	9.4
5 to less than 10 years	28.1	21.9	27.1	18.5	-2.3
10 or more years	43.6	34.0	45.4	31.1	2.7
Total	128.2	100.0	146.3	100.0	8.7
1-4 employees					
Less than 1 year	9.7	9.6	7.2	7.1	-16.9
1 to less than 5 years	29.2	29.0	32.7	32.3	7.3
5 to less than 10 years	25.7	25.5	20.4	20.1	-13.6
10 or more years	36.2	35.9	41.0	40.5	8.2
Total	100.7	100.0	101.2	100.0	0.3
5-19 employees					
Less than 1 year	**0.7	2.4	*1.8	5.7	77.6
1 to less than 5 years	5.3	17.6	4.2	13.4	-13.9
5 to less than 10 years	8.8	29.1	8.8	28.0	-0.3
10 or more years	15.4	51.0	16.5	52.9	4.5
Total	30.3	100.0	31.3	100.0	2.1
Total					
Less than 1 year	22.8	8.8	31.8	11.4	23.4
1 to less than 5 years	78.7	30.3	87.8	31.5	7.2
5 to less than 10 years	62.6	24.2	56.3	20.2	-6.6
10 or more years	95.2	36.7	102.9	36.9	5.1
Total	259.3	100.0	278.8	100.0	4.7

** estimate has a relative standard error greater than 50% and is considered too unreliable for general use

* estimate has a relative standard error of between 25% and 50% and should be used with caution

3.1**LENGTH OF OPERATION BY CURRENT OWNER** *continued*

	NOVEMBER 1999		JUNE 2001		Average annual rate of change
	Number of businesses	Proportion of businesses	Number of businesses	Proportion of businesses	
	'000	%	'000	%	
.....					
QUEENSLAND					
Non-employed businesses					
Less than 1 year	14.0	14.0	22.1	15.8	33.9
1 to less than 5 years	38.9	39.0	61.6	44.1	33.6
5 to less than 10 years	21.7	21.7	24.8	17.7	8.6
10 or more years	25.3	25.3	31.3	22.4	14.4
Total	99.9	100.0	139.8	100.0	23.6
1-4 employees					
Less than 1 year	5.7	8.9	10.0	14.6	42.7
1 to less than 5 years	25.5	40.0	21.1	30.7	-11.3
5 to less than 10 years	12.1	19.0	15.8	23.0	18.2
10 or more years	20.4	32.0	21.8	31.7	4.1
Total	63.8	100.0	68.7	100.0	4.8
5-19 employees					
Less than 1 year	**0.4	2.3	*2.6	9.9	210.7
1 to less than 5 years	5.9	31.8	6.0	22.9	1.1
5 to less than 10 years	4.6	24.8	7.3	27.8	33.8
10 or more years	7.6	41.1	10.4	39.5	21.3
Total	18.6	100.0	26.3	100.0	24.5
Total					
Less than 1 year	20.1	11.0	34.8	14.8	41.4
1 to less than 5 years	70.4	38.6	88.7	37.8	15.8
5 to less than 10 years	38.4	21.1	47.8	20.4	14.8
10 or more years	53.4	29.3	63.4	27.0	11.5
Total	182.3	100.0	234.8	100.0	17.3

** estimate has a relative standard error greater than 50% and is considered too unreliable for general use

* estimate has a relative standard error of between 25% and 50% and should be used with caution

3.1LENGTH OF OPERATION BY CURRENT OWNER *continued*

	NOVEMBER 1999		JUNE 2001		
	<i>Number of businesses</i>	<i>Proportion of businesses</i>	<i>Number of businesses</i>	<i>Proportion of businesses</i>	<i>Average annual rate of change</i>
	'000	%	'000	%	%
.....					
SOUTH AUSTRALIA					
Non-employed businesses					
Less than 1 year	5.4	13.9	10.5	19.6	51.9
1 to less than 5 years	11.7	30.0	18.3	34.2	32.7
5 to less than 10 years	9.0	23.0	10.0	18.6	7.0
10 or more years	12.9	33.2	14.8	27.6	8.7
Total	39.0	100.0	53.6	100.0	22.2
1-4 employees					
Less than 1 year	3.0	13.2	2.0	8.0	-22.0
1 to less than 5 years	8.1	35.6	9.6	37.7	11.0
5 to less than 10 years	4.4	19.1	4.8	18.9	6.5
10 or more years	7.3	32.1	9.0	35.4	14.2
Total	22.8	100.0	25.5	100.0	7.2
5-19 employees					
Less than 1 year	**0.3	4.7	*0.6	7.0	39.2
1 to less than 5 years	*1.4	19.2	2.2	26.5	31.5
5 to less than 10 years	*1.5	20.5	*1.1	13.0	-19.4
10 or more years	4.2	55.7	4.5	53.4	4.4
Total	7.5	100.0	8.4	100.0	7.2
Total					
Less than 1 year	8.8	12.6	13.1	15.0	28.9
1 to less than 5 years	21.3	30.7	30.2	34.5	24.6
5 to less than 10 years	14.9	21.4	15.9	18.2	4.3
10 or more years	24.4	35.2	28.3	32.3	9.7
Total	69.4	100.0	87.4	100.0	15.7

** estimate has a relative standard error greater than 50% and is considered too unreliable for general use

* estimate has a relative standard error of between 25% and 50% and should be used with caution

3.1**LENGTH OF OPERATION BY CURRENT OWNER** *continued*

	NOVEMBER 1999		JUNE 2001		Average annual rate of change
	Number of businesses	Proportion of businesses	Number of businesses	Proportion of businesses	
	'000	%	'000	%	
.....					
WESTERN AUSTRALIA					
Non-employed businesses					
Less than 1 year	8.5	15.1	16.8	21.5	53.4
1 to less than 5 years	24.5	43.3	29.1	37.3	11.6
5 to less than 10 years	12.2	21.5	14.5	18.5	11.5
10 or more years	11.4	20.1	17.7	22.6	32.0
Total	56.6	100.0	78.1	100.0	22.6
1-4 employees					
Less than 1 year	4.2	11.8	3.9	9.7	-4.6
1 to less than 5 years	12.6	35.4	12.5	31.0	-0.8
5 to less than 10 years	7.6	21.5	10.2	25.4	20.0
10 or more years	11.2	31.3	13.6	33.9	13.3
Total	35.6	100.0	40.2	100.0	7.9
5-19 employees					
Less than 1 year	*1.3	11.0	**0.2	1.5	-69.4
1 to less than 5 years	2.2	18.9	*2.4	17.4	3.9
5 to less than 10 years	2.8	23.6	3.5	25.3	14.3
10 or more years	5.5	46.5	7.7	55.8	22.8
Total	11.9	100.0	13.7	100.0	9.4
Total					
Less than 1 year	14.1	13.5	20.9	15.9	28.6
1 to less than 5 years	39.3	37.8	44.0	33.3	7.3
5 to less than 10 years	22.6	21.8	28.2	21.3	14.8
10 or more years	28.1	27.0	38.9	29.5	22.9
Total	104.1	100.0	132.0	100.0	16.2

* estimate has a relative standard error of between 25% and 50% and should be used with caution

** estimate has a relative standard error greater than 50% and is considered too unreliable for general use

3.1LENGTH OF OPERATION BY CURRENT OWNER *continued*

	NOVEMBER 1999		JUNE 2001		Average annual rate of change
	Number of businesses	Proportion of businesses	Number of businesses	Proportion of businesses	
	'000	%	'000	%	
.....					
TASMANIA					
Non-employed businesses					
Less than 1 year	1.5	13.3	2.2	16.3	30.8
1 to less than 5 years	3.3	30.2	5.5	40.6	38.5
5 to less than 10 years	3.9	35.3	2.7	19.7	-20.5
10 or more years	2.3	21.2	3.2	23.4	22.5
Total	10.9	100.0	13.6	100.0	15.0
1-4 employees					
Less than 1 year	*0.4	6.2	*0.5	8.0	20.3
1 to less than 5 years	1.4	21.1	1.7	25.4	14.9
5 to less than 10 years	1.8	27.5	2.2	32.7	13.9
10 or more years	2.9	45.2	2.3	33.9	-14.9
Total	6.4	100.0	6.6	100.0	2.1
5-19 employees					
Less than 1 year	—	—	—	—	na
1 to less than 5 years	*0.3	15.0	*0.6	25.7	48.2
5 to less than 10 years	*0.6	28.4	*0.5	19.1	-18.1
10 or more years	1.3	56.6	*1.3	54.0	2.1
Total	2.3	100.0	2.5	100.0	5.2
Total					
Less than 1 year	1.9	9.5	2.8	12.3	29.4
1 to less than 5 years	5.0	25.5	7.9	34.5	33.0
5 to less than 10 years	6.3	31.9	5.3	23.4	-9.8
10 or more years	6.5	33.1	6.8	29.8	2.6
Total	19.6	100.0	22.7	100.0	9.7

* estimate has a relative standard error of between 25% and 50% and should be used with caution

— nil or rounded to zero (including null cells)

na not available

3.1**LENGTH OF OPERATION BY CURRENT OWNER** *continued*

	NOVEMBER 1999		JUNE 2001		Average annual rate of change
	Number of businesses	Proportion of businesses	Number of businesses	Proportion of businesses	
	'000	%	'000	%	
.....					
NORTHERN TERRITORY (a)					
Non-employed businesses					
Less than 1 year	*0.5	13.7	*0.7	22.8	33.5
1 to less than 5 years	1.8	51.4	*1.0	30.6	-30.3
5 to less than 10 years	*0.6	18.1	*0.9	29.3	31.2
10 or more years	*0.6	16.8	*0.6	17.3	-1.3
Total	3.4	100.0	3.2	100.0	-3.3
1-4 employees					
Less than 1 year	*0.4	12.9	**0.1	3.6	-46.7
1 to less than 5 years	1.2	45.7	*1.7	48.5	23.7
5 to less than 10 years	*0.6	23.7	*0.8	23.2	17.4
10 or more years	*0.5	17.7	*0.9	24.7	46.8
Total	2.7	100.0	3.6	100.0	19.1
5-19 employees					
Less than 1 year	—	—	—	—	na
1 to less than 5 years	*0.7	46.7	**0.2	30.2	-47.5
5 to less than 10 years	**0.3	19.6	**0.1	17.5	-35.8
10 or more years	*0.5	33.7	*0.4	52.3	-8.8
Total	1.4	100.0	*0.8	100.0	-30.9
Total					
Less than 1 year	*0.8	10.9	*0.9	11.4	3.7
1 to less than 5 years	3.7	48.5	3.0	39.0	-12.2
5 to less than 10 years	1.5	20.4	*1.9	25.2	14.9
10 or more years	1.5	20.2	*1.9	24.4	13.1
Total	7.6	100.0	7.6	100.0	0.6

* estimate has a relative standard error of between 25% and 50% and should be used with caution

** estimate has a relative standard error greater than 50% and is considered too unreliable for general use

— nil or rounded to zero (including null cells)

na not available

(a) Refers to mainly urban areas only.

3.1LENGTH OF OPERATION BY CURRENT OWNER *continued*

	NOVEMBER 1999		JUNE 2001		Average annual rate of change
	Number of businesses	Proportion of businesses	Number of businesses	Proportion of businesses	
	'000	%	'000	%	
.....					
AUSTRALIAN CAPITAL TERRITORY					
Non-employed businesses					
Less than 1 year	*0.3	5.9	2.1	19.4	212.9
1 to less than 5 years	3.4	59.2	4.4	41.8	17.6
5 to less than 10 years	*0.9	15.0	2.0	19.1	71.0
10 or more years	1.2	20.0	2.1	19.7	45.5
Total	5.8	100.0	10.6	100.0	46.6
1-4 employees					
Less than 1 year	*0.8	14.4	*0.5	8.9	-20.8
1 to less than 5 years	2.1	38.2	2.6	43.5	16.1
5 to less than 10 years	*1.0	17.6	*1.1	18.1	8.7
10 or more years	1.6	29.8	1.8	29.5	6.1
Total	5.4	100.0	6.0	100.0	6.9
5-19 employees					
Less than 1 year	**0.1	4.8	**0.1	3.0	-36.7
1 to less than 5 years	1.3	53.6	*1.1	56.8	-12.2
5 to less than 10 years	*0.4	15.8	*0.3	16.1	-14.1
10 or more years	*0.6	25.9	*0.5	24.1	-19.0
Total	2.5	100.0	1.9	100.0	-15.3
Total					
Less than 1 year	1.2	9.0	2.6	14.3	61.9
1 to less than 5 years	6.8	49.9	8.1	43.9	11.7
5 to less than 10 years	2.2	16.2	3.4	18.5	31.7
10 or more years	3.4	24.9	4.3	23.3	16.1
Total	13.7	100.0	18.5	100.0	21.1

* estimate has a relative standard error of between 25% and 50% and should be used with caution

** estimate has a relative standard error greater than 50% and is considered too unreliable for general use

3.2**NUMBER OF BUSINESS OPERATORS**

	NOVEMBER 1999		JUNE 2001		Average annual rate of change
	Number of businesses	Proportion of businesses	Number of businesses	Proportion of businesses	
	'000	%	'000	%	
.....					
AUSTRALIA					
Non-employing businesses					
1 operator	365.3	74.5	499.4	78.4	21.8
2 operators	118.9	24.2	132.7	20.8	7.2
3 or more operators	6.1	1.2	5.3	0.8	-9.0
Total	490.3	100.0	637.3	100.0	18.0
1-4 employees					
1 operator	216.9	57.1	231.0	58.1	4.1
2 operators	153.6	40.5	158.2	39.8	1.9
3 or more operators	9.1	2.4	8.5	2.1	-4.1
Total	379.6	100.0	397.7	100.0	3.0
5-19 employees					
1 operator	40.5	33.8	40.2	31.7	-0.6
2 operators	66.1	55.1	71.0	55.9	4.5
3 or more operators	13.4	11.2	15.8	12.4	10.8
Total	120.1	100.0	126.9	100.0	3.6
Total					
1 operator	622.8	62.9	770.6	66.3	14.4
2 operators	338.6	34.2	361.8	31.1	4.3
3 or more operators	28.7	2.9	29.6	2.5	2.1
Total	990.1	100.0	1 162.0	100.0	10.6
.....					
NEW SOUTH WALES					
Non-employing businesses					
1 operator	111.8	76.3	156.2	81.3	23.5
2 operators	32.9	22.5	34.1	17.7	2.3
3 or more operators	*1.7	1.2	*1.9	1.0	5.7
Total	146.5	100.0	192.2	100.0	18.7
1-4 employees					
1 operator	91.3	64.3	89.7	61.5	-1.1
2 operators	46.8	32.9	52.6	36.1	7.7
3 or more operators	*4.0	2.8	*3.5	2.4	-7.3
Total	142.0	100.0	145.8	100.0	1.7
5-19 employees					
1 operator	15.9	34.9	14.1	33.6	-7.2
2 operators	25.3	55.4	22.8	54.1	-6.4
3 or more operators	4.4	9.7	*5.2	12.3	10.4
Total	45.7	100.0	42.1	100.0	-5.0
Total					
1 operator	219.0	65.5	260.0	68.4	11.4
2 operators	105.0	31.4	109.5	28.8	2.7
3 or more operators	10.2	3.0	10.6	2.8	2.9
Total	334.2	100.0	380.1	100.0	8.5

* estimate has a relative standard error of between 25% and 50% and should be used with caution

3.2**NUMBER OF BUSINESS OPERATORS** *continued*

	NOVEMBER 1999		JUNE 2001		Average annual rate of change
	Number of businesses	Proportion of businesses	Number of businesses	Proportion of businesses	
	'000	%	'000	%	
VICTORIA					
Non-employed businesses					
1 operator	98.6	76.9	114.3	78.2	9.8
2 operators	27.9	21.8	30.9	21.1	6.6
3 or more operators	*1.7	1.3	*1.1	0.7	-25.0
Total	128.2	100.0	146.3	100.0	8.7
1-4 employees					
1 operator	58.2	57.8	61.8	61.1	3.9
2 operators	40.7	40.4	37.7	37.3	-4.6
3 or more operators	*1.8	1.8	*1.6	1.6	-6.9
Total	100.7	100.0	101.2	100.0	0.3
5-19 employees					
1 operator	11.6	38.1	10.6	33.9	-5.3
2 operators	14.7	48.7	16.4	52.3	6.9
3 or more operators	4.0	13.2	4.3	13.8	4.9
Total	30.3	100.0	31.3	100.0	2.1
Total					
1 operator	168.4	65.0	186.8	67.0	6.8
2 operators	83.4	32.1	85.0	30.5	1.3
3 or more operators	7.5	2.9	7.0	2.5	-4.3
Total	259.3	100.0	278.8	100.0	4.7
QUEENSLAND					
Non-employed businesses					
1 operator	70.3	70.4	104.7	74.9	28.6
2 operators	28.5	28.5	34.4	24.6	12.8
3 or more operators	*1.1	1.1	*0.7	0.5	-26.0
Total	99.9	100.0	139.8	100.0	23.6
1-4 employees					
1 operator	29.2	45.7	35.7	52.0	13.7
2 operators	33.9	53.2	31.5	45.9	-4.6
3 or more operators	*0.7	1.1	*1.5	2.1	58.8
Total	63.8	100.0	68.7	100.0	4.8
5-19 employees					
1 operator	5.6	30.0	7.7	29.1	22.2
2 operators	10.7	57.8	17.0	64.6	33.5
3 or more operators	*2.3	12.2	*1.7	6.3	-18.0
Total	18.6	100.0	26.3	100.0	24.5
Total					
1 operator	105.1	57.6	148.1	63.1	24.2
2 operators	73.1	40.1	82.9	35.3	8.2
3 or more operators	4.1	2.2	3.8	1.6	-4.3
Total	182.3	100.0	234.8	100.0	17.3

* estimate has a relative standard error of between 25% and 50% and should be used with caution

** estimate has a relative standard error greater than 50% and is considered too unreliable for general use

3.2**NUMBER OF BUSINESS OPERATORS** *continued*

	NOVEMBER 1999		JUNE 2001		Average annual rate of change
	Number of businesses	Proportion of businesses	Number of businesses	Proportion of businesses	
	'000	%	'000	%	
SOUTH AUSTRALIA					
Non-employing businesses					
1 operator	28.3	72.6	42.5	79.4	29.3
2 operators	10.1	25.8	10.2	19.0	0.8
3 or more operators	*0.6	1.6	*0.8	1.5	18.8
Total	39.0	100.0	53.6	100.0	22.2
1-4 employees					
1 operator	14.0	61.2	13.5	52.9	-2.2
2 operators	7.8	34.0	11.8	46.3	30.2
3 or more operators	*1.1	4.8	**0.2	0.8	-66.4
Total	22.8	100.0	25.5	100.0	7.2
5-19 employees					
1 operator	2.5	33.2	*2.0	23.6	-13.5
2 operators	4.1	54.9	5.1	60.9	14.5
3 or more operators	*0.9	11.9	*1.3	15.4	26.5
Total	7.5	100.0	8.4	100.0	7.2
Total					
1 operator	44.8	64.6	58.0	66.4	17.8
2 operators	22.0	31.7	27.1	31.0	14.2
3 or more operators	2.6	3.8	2.3	2.6	-7.5
Total	69.4	100.0	87.4	100.0	15.7
WESTERN AUSTRALIA					
Non-employing businesses					
1 operator	40.1	70.9	59.2	75.8	27.8
2 operators	15.9	28.0	18.4	23.6	9.8
3 or more operators	*0.6	1.0	**0.5	0.6	-11.4
Total	56.6	100.0	78.1	100.0	22.6
1-4 employees					
1 operator	16.4	46.1	20.9	52.1	16.5
2 operators	18.1	50.8	17.7	44.1	-1.4
3 or more operators	*1.1	3.1	*1.5	3.8	23.8
Total	35.6	100.0	40.2	100.0	7.9
5-19 employees					
1 operator	2.6	22.3	4.9	35.9	47.9
2 operators	8.2	68.6	6.5	47.4	-13.4
3 or more operators	*1.1	9.1	*2.3	16.7	60.4
Total	11.9	100.0	13.7	100.0	9.4
Total					
1 operator	59.2	56.9	85.0	64.4	25.7
2 operators	42.1	40.5	42.6	32.3	0.7
3 or more operators	2.8	2.7	4.3	3.3	32.3
Total	104.1	100.0	132.0	100.0	16.2

* estimate has a relative standard error of between 25% and 50% and should be used with caution

** estimate has a relative standard error greater than 50% and is considered too unreliable for general use

3.2**NUMBER OF BUSINESS OPERATORS** *continued*

	NOVEMBER 1999		JUNE 2001		
	<i>Number of businesses</i>	<i>Proportion of businesses</i>	<i>Number of businesses</i>	<i>Proportion of businesses</i>	<i>Average annual rate of change</i>
	'000	%	'000	%	%
.....					
TASMANIA					
Non-employed businesses					
1 operator	8.7	79.3	10.6	77.4	13.2
2 operators	2.2	20.4	3.0	21.6	19.2
3 or more operators	—	—12.0	**0.1	1.0	151.5
Total	10.9	100.0	13.6	100.0	15.0
1–4 employees					
1 operator	3.3	51.5	3.2	48.3	–1.9
2 operators	2.9	44.6	3.3	50.3	10.2
3 or more operators	*0.3	3.9	**0.1	1.4	–45.8
Total	6.4	100.0	6.6	100.0	2.1
5–19 employees					
1 operator	*0.8	35.8	*0.3	13.5	–43.3
2 operators	1.2	52.6	1.7	69.7	25.7
3 or more operators	*0.3	11.6	*0.4	16.9	33.0
Total	2.3	100.0	2.5	100.0	5.2
Total					
1 operator	12.8	65.2	14.1	62.0	6.3
2 operators	6.3	32.1	8.0	35.2	16.4
3 or more operators	*0.5	2.8	*0.6	2.8	10.8
Total	19.6	100.0	22.7	100.0	9.7

— nil or rounded to zero (including null cells)

** estimate has a relative standard error greater than 50% and is considered too unreliable for general use

* estimate has a relative standard error of between 25% and 50% and should be used with caution

3.2**NUMBER OF BUSINESS OPERATORS** *continued*

	NOVEMBER 1999		JUNE 2001		Average annual rate of change
	Number of businesses	Proportion of businesses	Number of businesses	Proportion of businesses	
	'000	%	'000	%	
.....					
NORTHERN TERRITORY (a)					
Non-employed businesses					
1 operator	2.7	79.5	2.5	77.6	-4.7
2 operators	*0.6	16.7	*0.7	22.4	16.4
3 or more operators	**0.1	3.8	—	—	na
Total	3.4	100.0	3.2	100.0	-3.3
1-4 employees					
1 operator	1.9	68.6	2.3	62.9	12.8
2 operators	*0.8	30.0	*1.3	36.1	33.9
3 or more operators	—	-12.0	—	-12.0	na
Total	2.7	100.0	3.6	100.0	19.1
5-19 employees					
1 operator	*0.6	42.8	**0.2	30.5	-44.2
2 operators	*0.6	45.7	**0.3	39.2	-37.3
3 or more operators	**0.2	11.5	**0.2	30.3	27.2
Total	1.4	100.0	*0.8	100.0	-30.9
Total					
1 operator	5.2	68.7	5.0	65.8	-2.1
2 operators	2.0	26.9	2.3	30.6	9.2
3 or more operators	**0.3	4.4	**0.3	3.6	-11.7
Total	7.6	100.0	7.6	100.0	0.6

AUSTRALIAN CAPITAL TERRITORY

Non-employed businesses					
1 operator	4.7	81.5	9.4	89.1	55.2
2 operators	*0.9	14.9	*1.0	9.2	8.3
3 or more operators	**0.2	3.6	**0.2	1.6	-11.1
Total	5.8	100.0	10.6	100.0	46.6
1-4 employees					
1 operator	2.7	49.3	3.9	64.0	26.2
2 operators	2.6	48.6	2.1	35.3	-12.6
3 or more operators	**0.1	2.1	—	-12.0	na
Total	5.4	100.0	6.0	100.0	6.9
5-19 employees					
1 operator	*0.9	37.6	*0.3	16.1	-50.4
2 operators	1.2	49.6	*1.2	63.3	-1.2
3 or more operators	**0.3	12.8	*0.4	20.6	14.3
Total	2.5	100.0	1.9	100.0	-15.3
Total					
1 operator	8.3	60.8	13.6	73.5	36.5
2 operators	4.7	34.5	4.3	23.3	-5.6
3 or more operators	*0.6	4.7	*0.6	3.3	-3.9
Total	13.7	100.0	18.5	100.0	21.1

* estimate has a relative standard error of between 25% and 50% and should be used with caution

** estimate has a relative standard error greater than 50% and is considered too unreliable for general use

— nil or rounded to zero (including null cells)

na not available

(a) Refers to mainly urban areas only.

3.3**PREDOMINANCE OF MALE AND FEMALE OPERATORS, by selected characteristics**

	NOVEMBER 1999		JUNE 2001 . .		
	<i>Number of businesses</i>	<i>Proportion of businesses</i>	<i>Number of businesses</i>	<i>Proportion of businesses</i>	<i>Average annual rate of change</i>
	'000	%	'000	%	%
.....					
	PREDOMINANTLY		MALE		
Total small businesses	527.6	100.0	631.5	100.0	12.0
Home based small business					
Operated at home	85.8	16.3	110.1	17.4	17.1
Operated from home	341.6	64.7	437.1	69.2	16.8
Employer size group					
Non-employing businesses	273.7	51.9	373.5	59.1	21.7
1-4 employees	198.4	37.6	202.7	32.1	1.4
5-19 employees	55.6	10.5	55.3	8.8	-0.3
Age of business					
Less than 1 year	56.0	10.6	91.8	14.5	36.6
1 to less than 5 years	181.7	34.4	225.2	35.7	14.5
5 to less than 10 years	121.6	23.0	116.0	18.4	-2.9
10 or more years	168.4	31.9	198.5	31.4	11.0
Number of operators					
1 operator	466.5	88.4	574.7	91.0	14.1
2 operators	39.7	7.5	38.1	6.0	-2.6
3 or more operators	21.4	4.1	18.7	3.0	-8.4
Use of computers					
Has a computer	302.8	57.4	394.9	62.5	18.3
Does not have a computer	224.8	42.6	236.6	37.5	3.3
Internet use					
Has access to the Internet	187.7	35.6	312.5	49.5	38.0
Internet used for					
Email	156.4	29.6	258.9	41.0	37.5
Research	133.6	25.3	250.4	39.7	48.7
Making or receiving payments	48.6	9.2	103.4	16.4	61.1
Other	78.5	14.9	248.4	39.3	107.0
State					
New South Wales	192.2	36.4	219.0	34.7	8.6
Victoria	140.2	26.6	156.1	24.7	7.0
Queensland	87.1	16.5	116.2	18.4	20.0
South Australia	35.1	6.7	45.2	7.2	17.2
Western Australia	52.5	9.9	68.7	10.9	18.6
Tasmania	9.9	1.9	10.8	1.7	6.0
Northern Territory(a)	4.8	0.9	4.9	0.8	1.7
Australian Capital Territory	5.9	1.1	10.5	1.7	44.4

(a) Refers to mainly urban areas only.

3.3**PREDOMINANCE OF MALE AND FEMALE OPERATORS, by selected characteristics***continued*

	NOVEMBER 1999		JUNE 2001 . .		
	<i>Number of businesses</i>	<i>Proportion of businesses</i>	<i>Number of businesses</i>	<i>Proportion of businesses</i>	<i>Average annual rate of change</i>
	'000	%	'000	%	%
.....					
PREDOMINANTLY FEMALE					
Total small businesses	167.3	100.0	205.9	100.0	14.0
Home based small business					
Operated at home	66.0	39.5	85.7	41.6	17.9
Operated from home	100.7	60.2	139.6	67.8	23.0
Employer size group					
Non-employing businesses	110.6	66.1	143.7	69.8	18.0
1–4 employees	47.5	28.4	51.5	25.0	5.2
5–19 employees	9.2	5.5	10.7	5.2	10.0
Age of business					
Less than 1 year	29.1	17.4	41.0	19.9	24.2
1 to less than 5 years	66.5	39.7	87.7	42.6	19.1
5 to less than 10 years	33.5	20.0	35.6	17.3	3.8
10 or more years	38.2	22.8	41.6	20.2	5.6
Number of operators					
1 operator	156.3	93.4	195.8	95.1	15.3
2 operators	9.1	5.4	6.5	3.2	–18.7
3 or more operators	2.0	1.2	3.5	1.7	44.1
Use of computers					
Has a computer	90.1	53.9	127.6	62.0	24.6
Does not have a computer	77.2	46.1	78.2	38.0	0.8
Internet use					
Has access to the Internet	54.5	32.6	104.0	50.5	50.3
Internet used for					
Email	42.6	25.4	90.4	43.9	60.9
Research	38.4	22.9	84.3	40.9	64.4
Making or receiving payments	8.4	5.0	31.5	15.3	129.6
Other	21.0	12.5	84.5	41.0	141.2
State					
New South Wales	53.5	32.0	64.8	31.5	12.9
Victoria	48.4	28.9	46.3	22.5	–2.8
Queensland	27.5	16.5	42.2	20.5	31.0
South Australia	14.1	8.4	18.4	8.9	18.3
Western Australia	14.7	8.8	24.5	11.9	38.1
Tasmania	4.0	2.4	4.3	2.1	4.7
Northern Territory(a)	1.5	0.9	*1.1	0.6	–14.2
Australian Capital Territory	3.6	2.1	4.2	2.0	9.8

* estimate has a relative standard error of between 25% and 50% and should be used with caution

(a) Refers to mainly urban areas only.

3.3**PREDOMINANCE OF MALE AND FEMALE OPERATORS, by selected characteristics***continued*

	NOVEMBER 1999		JUNE 2001 ..		
	<i>Number of businesses</i>	<i>Proportion of businesses</i>	<i>Number of businesses</i>	<i>Proportion of businesses</i>	<i>Average annual rate of change</i>
	'000	%	'000	%	%
..... EQUAL MALE AND FEMALE					
Total small businesses	295.1	100.0	324.6	100.0	6.2
Home based small business					
Operated at home	52.5	17.8	70.3	21.6	20.2
Operated from home	150.9	51.1	166.3	51.2	6.3
Employer size group					
Non-employing businesses	106.0	35.9	120.1	37.0	8.2
1–4 employees	133.8	45.3	143.6	44.2	4.6
5–19 employees	55.3	18.7	60.9	18.8	6.3
Age of business					
Less than 1 year	21.1	7.2	26.9	8.3	16.5
1 to less than 5 years	92.2	31.2	96.7	29.8	3.0
5 to less than 10 years	66.6	22.6	69.8	21.5	3.0
10 or more years	115.1	39.0	131.2	40.4	8.6
Number of operators					
1 operator
2 operators	289.8	98.2	317.1	97.7	5.9
3 or more operators	5.3	1.8	7.4	2.3	24.5
Use of computers					
Has a computer	189.0	64.1	251.2	77.4	19.7
Does not have a computer	106.0	35.9	73.4	22.6	–20.7
Internet use					
Has access to the Internet	115.6	39.2	193.4	59.6	38.4
Internet used for					
Email	94.5	32.0	159.8	49.2	39.3
Research	79.1	26.8	147.9	45.6	48.4
Making or receiving payments	25.0	8.5	75.3	23.2	100.8
Other	44.0	14.9	160.9	49.6	126.7
State					
New South Wales	88.4	30.0	96.3	29.7	5.5
Victoria	70.7	24.0	76.4	23.5	5.0
Queensland	67.7	22.9	76.3	23.5	7.9
South Australia	20.1	6.8	23.9	7.4	11.3
Western Australia	36.9	12.5	38.7	11.9	3.0
Tasmania	5.7	1.9	7.6	2.3	19.4
Northern Territory(a)	1.3	0.4	1.5	0.5	12.3
Australian Capital Territory	4.2	1.4	3.8	1.2	–5.9

.. not applicable

(a) Refers to mainly urban areas only.

3.3**PREDOMINANCE OF MALE AND FEMALE OPERATORS, by selected characteristics***continued*

	NOVEMBER 1999		JUNE 2001 ..		
	<i>Number of businesses</i>	<i>Proportion of businesses</i>	<i>Number of businesses</i>	<i>Proportion of businesses</i>	<i>Average annual rate of change</i>
	'000	%	'000	%	%
.....					
TOTAL					
Total small businesses	990.1	100.0	1 162.0	100.0	10.6
Home based small business					
Operated at home	204.3	20.6	266.1	22.9	18.2
Operated from home	593.2	59.9	743.0	63.9	15.3
Employer size group					
Non-employing businesses	490.3	49.5	637.3	54.8	18.0
1–4 employees	379.6	38.3	397.7	34.2	3.0
5–19 employees	120.1	12.1	126.9	10.9	3.6
Age of business					
Less than 1 year	106.2	10.7	159.7	13.7	29.4
1 to less than 5 years	340.4	34.4	409.5	35.2	12.4
5 to less than 10 years	221.7	22.4	221.4	19.1	–0.1
10 or more years	321.7	32.5	371.4	32.0	9.5
Number of operators					
1 operator	622.8	62.9	770.6	66.3	14.4
2 operators	338.6	34.2	361.8	31.1	4.3
3 or more operators	28.7	2.9	29.6	2.5	2.1
Use of computers					
Has a computer	582.0	58.8	773.6	66.6	19.7
Does not have a computer	408.1	41.2	388.3	33.4	–3.1
Internet use					
Has access to the Internet	357.8	36.1	609.9	52.5	40.0
Internet used for					
Email	293.5	29.6	509.1	43.8	41.6
Research	251.0	25.4	482.6	41.5	51.1
Making or receiving payments	82.0	8.3	210.2	18.1	81.2
Other	143.5	14.5	493.8	42.5	118.2
State					
New South Wales	334.2	33.8	380.1	32.7	8.5
Victoria	259.3	26.2	278.8	24.0	4.7
Queensland	182.3	18.4	234.8	20.2	17.3
South Australia	69.4	7.0	87.4	7.5	15.7
Western Australia	104.1	10.5	132.0	11.4	16.2
Tasmania	19.6	2.0	22.7	2.0	9.7
Northern Territory(a)	7.6	0.8	7.6	0.7	0.6
Australian Capital Territory	13.7	1.4	18.5	1.6	21.1

(a) Refers to mainly urban areas only.

3.4

USE OF COMPUTERS AND INTERNET ACCESS

	NOVEMBER 1999		JUNE 2001 . .		Average annual rate of change
	<i>Number of businesses</i>	<i>Proportion of businesses</i>	<i>Number of businesses</i>	<i>Proportion of businesses</i>	
	'000	%	'000	%	
.....					
AUSTRALIA					
Non-employed businesses					
Has a computer	232.3	47.4	354.4	55.6	30.6
Does not have a computer	258.1	52.6	282.9	44.4	6.0
Has access to the Internet	132.9	27.1	271.5	42.6	57.0
Does not have access to the Internet	357.5	72.9	365.8	57.4	1.5
Total	490.3	100.0	637.3	100.0	18.0
1-4 employees					
Has a computer	248.0	65.3	306.9	77.2	14.4
Does not have a computer	131.6	34.7	90.8	22.8	-20.9
Has access to the Internet	157.7	41.5	245.6	61.7	32.3
Does not have access to the Internet	221.9	58.5	152.1	38.3	-21.2
Total	379.6	100.0	397.7	100.0	3.0
5-19 employees					
Has a computer	101.7	84.7	112.3	88.5	6.5
Does not have a computer	18.4	15.3	14.6	11.5	-13.6
Has access to the Internet	67.2	56.0	92.9	73.2	22.6
Does not have access to the Internet	52.9	44.0	34.1	26.8	-24.2
Total	120.1	100.0	126.9	100.0	3.6
Total					
Has a computer	582.0	58.8	773.6	66.6	19.7
Does not have a computer	408.1	41.2	388.3	33.4	-3.1
Has access to the Internet	357.8	36.1	609.9	52.5	40.0
Does not have access to the Internet	632.2	63.9	552.0	47.5	-8.2
Total	990.1	100.0	1 162.0	100.0	10.6

3.4**USE OF COMPUTERS AND INTERNET ACCESS** *continued*

	NOVEMBER 1999		JUNE 2001 . .		Average annual rate of change
	<i>Number of businesses</i>	<i>Proportion of businesses</i>	<i>Number of businesses</i>	<i>Proportion of businesses</i>	
	'000	%	'000	%	
NEW SOUTH WALES					
Non-employed businesses					
Has a computer	66.4	45.3	102.2	53.2	31.4
Does not have a computer	80.1	54.7	89.9	46.8	7.6
Has access to the Internet	40.7	27.8	81.3	42.3	54.7
Does not have access to the Internet	105.7	72.2	110.8	57.7	3.0
Total	146.5	100.0	192.2	100.0	18.7
1-4 employees					
Has a computer	89.8	63.2	115.1	78.9	17.0
Does not have a computer	52.2	36.8	30.7	21.1	-28.4
Has access to the Internet	51.9	36.6	96.2	66.0	47.6
Does not have access to the Internet	90.1	63.4	49.6	34.0	-31.4
Total	142.0	100.0	145.8	100.0	1.7
5-19 employees					
Has a computer	37.7	82.6	35.5	84.3	-3.7
Does not have a computer	8.0	17.4	6.6	15.7	-11.1
Has access to the Internet	25.5	55.7	27.4	65.0	4.7
Does not have access to the Internet	20.2	44.3	14.7	35.0	-18.1
Total	45.7	100.0	42.1	100.0	-5.0
Total					
Has a computer	193.9	58.0	252.8	66.5	18.2
Does not have a computer	140.3	42.0	127.3	33.5	-6.0
Has access to the Internet	118.2	35.4	205.0	53.9	41.6
Does not have access to the Internet	216.0	64.6	175.2	46.1	-12.4
Total	334.2	100.0	380.1	100.0	8.5

3.4**USE OF COMPUTERS AND INTERNET ACCESS** *continued*

	NOVEMBER 1999		JUNE 2001 . .		
	<i>Number of businesses</i>	<i>Proportion of businesses</i>	<i>Number of businesses</i>	<i>Proportion of businesses</i>	<i>Average annual rate of change</i>
	'000	%	'000	%	%
.....					
VICTORIA					
Non-employed businesses					
Has a computer	56.4	43.9	82.5	56.4	27.2
Does not have a computer	71.9	56.1	63.8	43.6	-7.2
Has access to the Internet	33.0	25.7	55.9	38.2	39.5
Does not have access to the Internet	95.3	74.3	90.4	61.8	-3.3
Total	128.2	100.0	146.3	100.0	8.7
1-4 employees					
Has a computer	66.3	65.8	75.7	74.8	8.7
Does not have a computer	34.4	34.2	25.5	25.2	-17.2
Has access to the Internet	44.9	44.5	57.2	56.5	16.6
Does not have access to the Internet	55.9	55.5	44.0	43.5	-14.0
Total	100.7	100.0	101.2	100.0	0.3
5-19 employees					
Has a computer	26.6	87.7	28.8	92.1	5.2
Does not have a computer	3.7	12.3	*2.5	7.9	-22.4
Has access to the Internet	17.8	58.9	24.9	79.5	23.4
Does not have access to the Internet	12.5	41.1	6.4	20.5	-34.2
Total	30.3	100.0	31.3	100.0	2.1
Total					
Has a computer	149.2	57.6	187.0	67.1	15.3
Does not have a computer	110.0	42.4	91.8	32.9	-10.8
Has access to the Internet	95.7	36.9	138.0	49.5	26.0
Does not have access to the Internet	163.6	63.1	140.8	50.5	-9.0
Total	259.3	100.0	278.8	100.0	4.7

* estimate has a relative standard error of between 25% and 50% and should be used with caution

3.4**USE OF COMPUTERS AND INTERNET ACCESS** *continued*

	NOVEMBER 1999		JUNE 2001		Average annual rate of change
	Number of businesses	Proportion of businesses	Number of businesses	Proportion of businesses	
	'000	%	'000	%	
.....					
QUEENSLAND					
Non-employed businesses					
Has a computer	49.9	50.0	75.8	54.2	30.2
Does not have a computer	50.0	50.0	64.0	45.8	16.9
Has access to the Internet	27.1	27.1	60.6	43.4	66.3
Does not have access to the Internet	72.8	72.9	79.2	56.6	5.4
Total	99.9	100.0	139.8	100.0	23.6
1-4 employees					
Has a computer	43.0	67.4	54.8	79.8	16.6
Does not have a computer	20.8	32.6	13.9	20.2	-22.6
Has access to the Internet	28.7	44.9	44.6	64.9	32.2
Does not have access to the Internet	35.1	55.1	24.1	35.1	-21.2
Total	63.8	100.0	68.7	100.0	4.8
5-19 employees					
Has a computer	15.4	82.9	24.0	91.1	32.2
Does not have a computer	3.2	17.1	*2.3	8.9	-18.0
Has access to the Internet	9.7	52.0	19.9	75.7	57.7
Does not have access to the Internet	8.9	48.0	6.4	24.3	-18.9
Total	18.6	100.0	26.3	100.0	24.5
Total					
Has a computer	108.3	59.4	154.6	65.8	25.2
Does not have a computer	74.0	40.6	80.2	34.2	5.2
Has access to the Internet	65.4	35.9	125.1	53.3	50.6
Does not have access to the Internet	116.8	64.1	109.7	46.7	-3.9
Total	182.3	100.0	234.8	100.0	17.3

* estimate has a relative standard error of between 25% and 50% and should be used with caution

3.4**USE OF COMPUTERS AND INTERNET ACCESS** *continued*

	NOVEMBER 1999		JUNE 2001 . .		
	<i>Number of businesses</i>	<i>Proportion of businesses</i>	<i>Number of businesses</i>	<i>Proportion of businesses</i>	<i>Average annual rate of change</i>
	'000	%	'000	%	%
.....					
SOUTH AUSTRALIA					
Non-employed businesses					
Has a computer	18.8	48.2	29.5	55.1	32.8
Does not have a computer	20.2	51.8	24.0	44.9	11.7
Has access to the Internet	10.9	28.0	23.0	43.0	60.0
Does not have access to the Internet	28.1	72.0	30.6	57.0	5.5
Total	39.0	100.0	53.6	100.0	22.2
1–4 employees					
Has a computer	13.6	59.6	19.3	75.7	24.7
Does not have a computer	9.2	40.4	6.2	24.3	–22.4
Has access to the Internet	8.0	35.1	14.2	55.8	43.7
Does not have access to the Internet	14.8	64.9	11.3	44.2	–15.9
Total	22.8	100.0	25.5	100.0	7.2
5–19 employees					
Has a computer	6.3	84.2	7.7	92.6	13.8
Does not have a computer	*1.2	15.8	*0.6	7.4	–33.4
Has access to the Internet	3.6	48.5	6.4	76.6	43.2
Does not have access to the Internet	3.9	51.5	*2.0	23.4	–34.9
Total	7.5	100.0	8.4	100.0	7.2
Total					
Has a computer	38.7	55.9	56.6	64.7	27.0
Does not have a computer	30.6	44.1	30.9	35.3	0.5
Has access to the Internet	22.6	32.6	43.6	49.9	51.6
Does not have access to the Internet	46.8	67.4	43.8	50.1	–4.1
Total	69.4	100.0	87.4	100.0	15.7

* estimate has a relative standard error of between 25% and 50% and should be used with caution

3.4**USE OF COMPUTERS AND INTERNET ACCESS** *continued*

	NOVEMBER 1999		JUNE 2001 . .		Average annual rate of change
	<i>Number of businesses</i>	<i>Proportion of businesses</i>	<i>Number of businesses</i>	<i>Proportion of businesses</i>	
	'000	%	'000	%	
.....					
WESTERN AUSTRALIA					
Non-employed businesses					
Has a computer	29.7	52.4	47.8	61.2	35.2
Does not have a computer	26.9	47.6	30.3	38.8	7.7
Has access to the Internet	15.0	26.6	36.7	47.0	75.6
Does not have access to the Internet	41.5	73.4	41.4	53.0	-0.2
Total	56.6	100.0	78.1	100.0	22.6
1-4 employees					
Has a computer	25.2	70.7	29.9	74.3	11.4
Does not have a computer	10.4	29.3	10.3	25.7	-0.8
Has access to the Internet	17.0	47.6	23.4	58.2	22.5
Does not have access to the Internet	18.7	52.4	16.8	41.8	-6.4
Total	35.6	100.0	40.2	100.0	7.9
5-19 employees					
Has a computer	10.5	88.2	11.5	83.9	6.0
Does not have a computer	*1.4	11.8	*2.2	16.1	33.3
Has access to the Internet	7.3	61.1	10.3	75.3	24.8
Does not have access to the Internet	4.6	38.9	3.4	24.7	-17.9
Total	11.9	100.0	13.7	100.0	9.4
Total					
Has a computer	65.3	62.8	89.2	67.6	21.7
Does not have a computer	38.8	37.2	42.8	32.4	6.4
Has access to the Internet	39.3	37.7	70.4	53.3	44.5
Does not have access to the Internet	64.8	62.3	61.6	46.7	-3.2
Total	104.1	100.0	132.0	100.0	16.2

* estimate has a relative standard error of between 25% and 50% and should be used with caution

3.4USE OF COMPUTERS AND INTERNET ACCESS *continued*

	NOVEMBER 1999		JUNE 2001 . .		Average annual rate of change
	Number of businesses	Proportion of businesses	Number of businesses	Proportion of businesses	
	'000	%	'000	%	
TASMANIA					
Non-employed businesses					
Has a computer	5.7	51.7	7.1	52.2	15.7
Does not have a computer	5.3	48.3	6.5	47.8	14.3
Has access to the Internet	2.9	26.8	6.2	45.1	59.6
Does not have access to the Internet	8.0	73.2	7.5	54.9	-4.1
Total	10.9	100.0	13.6	100.0	15.0
1-4 employees					
Has a computer	4.2	66.0	5.0	74.6	10.4
Does not have a computer	2.2	34.0	1.7	25.4	-15.1
Has access to the Internet	2.6	39.9	3.9	58.5	30.2
Does not have access to the Internet	3.9	60.1	2.8	41.5	-19.2
Total	6.4	100.0	6.6	100.0	2.1
5-19 employees					
Has a computer	1.0	43.3	2.5	100.0	78.6
Does not have a computer	—	—	—	—	—
Has access to the Internet	2.0	88.8	2.0	79.5	-1.9
Does not have access to the Internet	*0.3	11.2	*0.5	20.5	54.6
Total	2.3	100.0	2.5	100.0	5.2
Total					
Has a computer	11.9	60.6	14.5	63.9	13.4
Does not have a computer	7.7	39.4	8.2	36.1	4.0
Has access to the Internet	6.8	34.6	12.0	52.8	43.4
Does not have access to the Internet	12.8	65.4	10.7	47.2	-10.7
Total	19.6	100.0	22.7	100.0	9.7

— nil or rounded to zero (including null cells)

* estimate has a relative standard error of between 25% and 50% and should be used with caution

3.4**USE OF COMPUTERS AND INTERNET ACCESS** *continued*

	NOVEMBER 1999		JUNE 2001 . .		Average annual rate of change
	Number of businesses	Proportion of businesses	Number of businesses	Proportion of businesses	
	'000	%	'000	%	
.....					
NORTHERN TERRITORY (a)					
Non-employed businesses					
Has a computer	1.2	35.2	*1.6	47.8	17.4
Does not have a computer	2.2	64.8	*1.7	52.2	-15.7
Has access to the Internet	*0.7	21.4	*1.3	40.4	44.3
Does not have access to the Internet	2.7	78.6	*1.9	59.6	-18.7
Total	3.4	100.0	3.2	100.0	-3.3
1-4 employees					
Has a computer	1.6	60.2	2.5	69.5	30.3
Does not have a computer	*1.1	39.8	*1.1	30.5	0.6
Has access to the Internet	1.2	44.5	*1.9	54.0	34.5
Does not have access to the Internet	1.5	55.5	*1.7	46.0	5.8
Total	2.7	100.0	3.6	100.0	19.1
5-19 employees					
Has a computer	*0.8	54.1	*0.8	100.0	1.8
Does not have a computer	—	—	—	—	—
Has access to the Internet	*1.1	76.2	*0.6	75.4	-31.4
Does not have access to the Internet	*0.3	23.8	**0.2	24.6	-29.5
Total	1.4	100.0	*0.8	100.0	-30.9
Total					
Has a computer	3.9	51.9	4.8	63.4	14.2
Does not have a computer	3.6	48.1	2.8	36.6	-15.4
Has access to the Internet	2.6	34.3	3.8	50.4	28.2
Does not have access to the Internet	5.0	65.7	3.8	49.6	-15.7
Total	7.6	100.0	7.6	100.0	0.6

* estimate has a relative standard error of between 25% and 50% and should be used with caution

— nil or rounded to zero (including null cells)

** estimate has a relative standard error greater than 50% and is considered too unreliable for general use

(a) Refers to mainly urban areas only.

3.4**USE OF COMPUTERS AND INTERNET ACCESS** *continued*

	NOVEMBER 1999		JUNE 2001 . .		Average annual rate of change
	<i>Number of businesses</i>	<i>Proportion of businesses</i>	<i>Number of businesses</i>	<i>Proportion of businesses</i>	
	'000	%	'000	%	
.....					
AUSTRALIAN CAPITAL TERRITORY					
Non-employed businesses					
Has a computer	4.3	74.0	7.9	74.7	47.5
Does not have a computer	1.5	26.0	2.7	25.3	44.1
Has access to the Internet	2.4	41.8	6.5	61.9	87.9
Does not have access to the Internet	3.4	58.2	4.0	38.1	12.2
Total	5.8	100.0	10.6	100.0	46.6
1-4 employees					
Has a computer	4.3	78.7	4.7	78.0	6.3
Does not have a computer	1.2	21.3	*1.3	22.0	9.1
Has access to the Internet	3.5	64.3	4.1	67.7	10.5
Does not have access to the Internet	1.9	35.7	1.9	32.3	0.3
Total	5.4	100.0	6.0	100.0	6.9
5-19 employees					
Has a computer	2.1	85.1	*1.5	81.2	-17.8
Does not have a computer	*0.4	14.9	*0.4	18.8	-2.2
Has access to the Internet	1.4	58.2	*1.4	75.5	-0.2
Does not have access to the Internet	1.0	41.8	*0.5	24.5	-39.6
Total	2.5	100.0	1.9	100.0	-15.3
Total					
Has a computer	10.6	77.9	14.1	76.5	19.7
Does not have a computer	3.0	22.1	4.4	23.5	25.9
Has access to the Internet	7.3	53.7	12.1	65.2	36.9
Does not have access to the Internet	6.3	46.3	6.4	34.8	1.1
Total	13.7	100.0	18.5	100.0	21.1

* estimate has a relative standard error of between 25% and 50% and should be used with caution

3.5

MAJOR USES OF THE INTERNET

	NOVEMBER 1999		JUNE 2001		Average annual rate of change
	<i>Number of businesses</i>	<i>Proportion of businesses</i>	<i>Number of businesses</i>	<i>Proportion of businesses</i>	
	'000	%	'000	%	%
AUSTRALIA					
Non-employing businesses					
Email	103.4	21.1	221.2	34.7	61.6
Research	90.1	18.4	214.4	33.6	72.9
Making or receiving payments	24.4	5.0	76.3	12.0	105.4
Other	52.8	10.8	209.7	32.9	138.8
Total small businesses	490.3	100.0	637.3	100.0	18.0
1-4 employees					
Email	132.8	35.0	209.0	52.6	33.2
Research	116.1	30.6	198.7	50.0	40.4
Making or receiving payments	33.9	8.9	86.8	21.8	80.9
Other	57.0	15.0	203.8	51.2	123.6
Total small businesses	379.6	100.0	397.7	100.0	3.0
5-19 employees					
Email	57.2	47.6	78.9	62.2	22.6
Research	44.8	37.3	69.4	54.7	31.8
Making or receiving payments	23.7	19.7	47.1	37.1	54.5
Other	33.7	28.0	80.3	63.3	73.2
Total small businesses	120.1	100.0	126.9	100.0	3.6
Total					
Email	293.5	29.6	509.1	43.8	41.6
Research	251.0	25.4	482.6	41.5	51.1
Making or receiving payments	82.0	8.3	210.2	18.1	81.2
Other	143.5	14.5	493.8	42.5	118.2
Total small businesses	990.1	100.0	1 162.0	100.0	10.6

3.5**MAJOR USES OF THE INTERNET** *continued*

	NOVEMBER 1999		JUNE 2001		Average annual rate of change
	Number of businesses	Proportion of businesses	Number of businesses	Proportion of businesses	
	'000	%	'000	%	%
NEW SOUTH WALES					
Non-employed businesses					
Email	32.3	22.1	68.5	35.7	60.8
Research	27.7	18.9	67.0	34.9	74.6
Making or receiving payments	9.8	6.7	21.6	11.2	64.8
Other	14.7	10.1	62.9	32.7	150.0
Total small businesses	146.5	100.0	192.2	100.0	18.7
1-4 employees					
Email	44.7	31.5	82.0	56.2	46.6
Research	38.7	27.2	78.8	54.1	56.7
Making or receiving payments	12.6	8.9	31.8	21.8	79.3
Other	16.6	11.7	80.8	55.4	171.2
Total small businesses	142.0	100.0	145.8	100.0	1.7
5-19 employees					
Email	21.5	47.0	23.4	55.6	5.7
Research	15.7	34.5	20.7	49.1	18.8
Making or receiving payments	10.3	22.6	14.6	34.7	24.6
Other	12.2	26.8	24.3	57.7	54.3
Total small businesses	45.7	100.0	42.1	100.0	-5.0
Total					
Email	98.5	29.5	173.9	45.8	43.2
Research	82.2	24.6	166.5	43.8	56.2
Making or receiving payments	32.7	9.8	68.1	17.9	58.8
Other	43.6	13.0	167.9	44.2	134.3
Total small businesses	334.2	100.0	380.1	100.0	8.5

3.5**MAJOR USES OF THE INTERNET** *continued*

	NOVEMBER 1999		JUNE 2001		Average annual rate of change
	<i>Number of businesses</i>	<i>Proportion of businesses</i>	<i>Number of businesses</i>	<i>Proportion of businesses</i>	
	'000	%	'000	%	
.....					
VICTORIA					
Non-employing businesses					
Email	25.6	20.0	45.9	31.4	44.5
Research	20.4	15.9	43.8	30.0	62.0
Making or receiving payments	4.7	3.6	18.1	12.4	135.5
Other	13.7	10.7	44.4	30.4	110.2
Total small businesses	128.2	100.0	146.3	100.0	8.7
1-4 employees					
Email	38.1	37.8	47.9	47.3	15.5
Research	32.9	32.7	45.8	45.2	23.2
Making or receiving payments	10.2	10.2	19.3	19.0	49.2
Other	15.7	15.5	45.6	45.0	96.4
Total small businesses	100.7	100.0	101.2	100.0	0.3
5-19 employees					
Email	15.1	49.9	20.5	65.4	21.1
Research	13.4	44.4	17.9	57.2	19.8
Making or receiving payments	5.1	16.9	10.0	32.0	53.0
Other	10.1	33.3	20.4	65.1	56.0
Total small businesses	30.3	100.0	31.3	100.0	2.1
Total					
Email	78.8	30.4	114.2	41.0	26.4
Research	66.8	25.8	107.5	38.6	35.1
Making or receiving payments	20.0	7.7	47.4	17.0	72.5
Other	39.4	15.2	110.4	39.6	91.6
Total small businesses	259.3	100.0	278.8	100.0	4.7

3.5**MAJOR USES OF THE INTERNET** *continued*

	NOVEMBER 1999		JUNE 2001		Average annual rate of change
	Number of businesses	Proportion of businesses	Number of businesses	Proportion of businesses	
	'000	%	'000	%	
.....					
QUEENSLAND					
Non-employing businesses					
Email	21.4	21.4	48.1	34.4	66.6
Research	19.3	19.3	46.8	33.5	75.1
Making or receiving payments	4.6	4.6	17.4	12.4	131.5
Other	12.0	12.0	45.1	32.2	130.8
Total small businesses	99.9	100.0	139.8	100.0	23.6
1-4 employees					
Email	23.5	36.8	38.4	55.9	36.4
Research	19.9	31.2	36.8	53.5	47.2
Making or receiving payments	3.4	5.3	17.8	26.0	185.2
Other	12.3	19.3	37.3	54.2	101.2
Total small businesses	63.8	100.0	68.7	100.0	4.8
5-19 employees					
Email	8.3	44.9	16.5	62.7	53.9
Research	6.4	34.5	14.1	53.5	64.1
Making or receiving payments	3.2	17.1	10.7	40.7	115.1
Other	4.2	22.7	17.2	65.3	142.5
Total small businesses	18.6	100.0	26.3	100.0	24.5
Total					
Email	53.2	29.2	102.9	43.8	51.7
Research	45.6	25.0	97.6	41.6	61.7
Making or receiving payments	11.2	6.1	45.9	19.6	144.1
Other	28.5	15.7	99.5	42.4	120.1
Total small businesses	182.3	100.0	234.8	100.0	17.3

* estimate has a relative standard error of between 25% and 50% and should be used with caution

3.5**MAJOR USES OF THE INTERNET** *continued*

	NOVEMBER 1999		JUNE 2001 . .		
	Number of businesses	Proportion of businesses	Number of businesses	Proportion of businesses	Average annual rate of change
	'000	%	'000	%	%
. SOUTH AUSTRALIA					
Non-employing businesses					
Email	7.7	19.6	17.9	33.4	70.9
Research	7.3	18.7	18.9	35.3	82.6
Making or receiving payments	*1.0	2.6	6.7	12.6	230.7
Other	3.4	8.8	16.9	31.5	173.3
Total small businesses	39.0	100.0	53.6	100.0	22.2
1-4 employees					
Email	6.6	29.1	11.6	45.6	42.3
Research	5.8	25.3	10.8	42.5	48.8
Making or receiving payments	*2.1	9.0	4.7	18.6	69.4
Other	2.9	12.7	12.3	48.3	149.1
Total small businesses	22.8	100.0	25.5	100.0	7.2
5-19 employees					
Email	3.1	41.9	6.0	71.9	50.7
Research	2.3	30.1	5.6	67.0	77.5
Making or receiving payments	*1.1	15.0	3.1	36.6	88.2
Other	*1.7	22.6	5.6	66.4	111.9
Total small businesses	7.5	100.0	8.4	100.0	7.2
Total					
Email	17.5	25.2	35.5	40.6	56.7
Research	15.3	22.1	35.4	40.4	69.6
Making or receiving payments	4.2	6.1	14.5	16.6	119.2
Other	8.0	11.6	34.8	39.8	152.3
Total small businesses	69.4	100.0	87.4	100.0	15.7

* estimate has a relative standard error of between 25% and 50% and should be used with caution

3.5**MAJOR USES OF THE INTERNET** *continued*

	NOVEMBER 1999		JUNE 2001		Average annual rate of change
	Number of businesses	Proportion of businesses	Number of businesses	Proportion of businesses	
	'000	%	'000	%	
.....					
WESTERN AUSTRALIA					
Non-employing businesses					
Email	11.3	20.0	28.7	36.7	79.7
Research	10.5	18.5	25.8	33.1	77.1
Making or receiving payments	3.3	5.8	7.9	10.1	73.5
Other	6.4	11.4	29.4	37.7	161.2
Total small businesses	56.6	100.0	78.1	100.0	22.6
1-4 employees					
Email	13.6	38.2	20.4	50.8	29.1
Research	13.0	36.5	18.4	45.7	24.4
Making or receiving payments	3.5	9.8	9.1	22.7	83.4
Other	6.6	18.5	19.4	48.3	98.1
Total small businesses	35.6	100.0	40.2	100.0	7.9
5-19 employees					
Email	6.3	52.8	9.1	66.1	26.1
Research	4.3	36.5	8.0	58.5	47.4
Making or receiving payments	2.9	24.5	6.6	48.1	67.6
Other	3.5	29.0	9.4	68.4	87.9
Total small businesses	11.9	100.0	13.7	100.0	9.4
Total					
Email	31.2	30.0	58.1	44.1	48.1
Research	27.8	26.7	52.2	39.6	48.9
Making or receiving payments	9.7	9.3	23.6	17.9	75.3
Other	16.5	15.8	58.2	44.1	122.0
Total small businesses	104.1	100.0	132.0	100.0	16.2

3.5**MAJOR USES OF THE INTERNET** *continued*

	NOVEMBER 1999		JUNE 2001		Average annual rate of change
	Number of businesses	Proportion of businesses	Number of businesses	Proportion of businesses	
	'000	%	'000	%	
.....					
TASMANIA					
Non-employing businesses					
Email	2.3	20.8	5.1	37.4	66.5
Research	2.6	23.5	5.2	38.2	56.3
Making or receiving payments	*0.6	5.1	1.9	14.2	119.1
Other	1.1	10.2	4.4	32.0	136.5
Total small businesses	10.9	100.0	13.6	100.0	15.0
1-4 employees					
Email	2.1	33.0	3.5	52.9	37.6
Research	1.9	28.9	3.1	46.5	38.0
Making or receiving payments	*0.4	6.9	*1.1	16.4	76.4
Other	1.0	15.1	3.0	44.9	103.5
Total small businesses	6.4	100.0	6.6	100.0	2.1
5-19 employees					
Email	1.1	47.7	1.6	64.8	27.6
Research	0.9	41.1	*1.4	56.7	29.0
Making or receiving payments	*0.5	22.9	*0.8	32.3	30.8
Other	*0.6	28.2	1.6	66.9	81.7
Total small businesses	2.3	100.0	2.5	100.0	5.2
Total					
Email	5.5	27.9	10.2	44.9	48.2
Research	5.4	27.3	9.7	42.6	45.4
Making or receiving payments	1.5	7.8	3.8	16.8	78.9
Other	2.7	13.9	9.0	39.5	112.6
Total small businesses	19.6	100.0	22.7	100.0	9.7

* estimate has a relative standard error of between 25% and 50% and should be used with caution

3.5**MAJOR USES OF THE INTERNET** *continued*

	NOVEMBER 1999		JUNE 2001		Average annual rate of change
	Number of businesses	Proportion of businesses	Number of businesses	Proportion of businesses	
	'000	%	'000	%	%
NORTHERN TERRITORY (a)					
Non-employed businesses					
Email	*0.7	21.4	*0.9	29.3	17.8
Research	*0.6	17.9	*0.9	29.2	31.7
Making or receiving payments	**0.1	3.0	**0.3	8.1	81.7
Other	*0.4	11.3	*0.8	24.4	57.5
Total small businesses	3.4	100.0	3.2	100.0	-3.3
1-4 employees					
Email	*1.0	38.0	*1.3	36.8	16.5
Research	1.2	44.5	*1.4	39.1	9.8
Making or receiving payments	*0.4	13.7	*0.9	24.4	70.9
Other	*0.5	20.1	*1.6	45.7	100.3
Total small businesses	2.7	100.0	3.6	100.0	19.1
5-19 employees					
Email	*0.6	45.9	*0.6	75.4	-5.5
Research	*0.6	45.9	*0.5	67.7	-11.7
Making or receiving payments	*0.6	41.3	**0.2	31.6	-41.7
Other	*0.4	30.8	*0.6	75.4	21.6
Total small businesses	1.4	100.0	*0.8	100.0	-30.9
Total					
Email	2.4	32.0	2.9	37.5	11.3
Research	2.4	31.9	2.9	37.8	12.1
Making or receiving payments	*0.5	6.3	*1.4	18.2	96.0
Other	1.4	18.1	3.0	39.7	65.3
Total small businesses	7.6	100.0	7.6	100.0	0.6

* estimate has a relative standard error of between 25% and 50% and should be used with caution

** estimate has a relative standard error greater than 50% and is considered too unreliable for general use

(a) Refers to mainly urban areas only.

3.5**MAJOR USES OF THE INTERNET** *continued*

	NOVEMBER 1999		JUNE 2001		Average annual rate of change
	Number of businesses	Proportion of businesses	Number of businesses	Proportion of businesses	
	'000	%	'000	%	%
AUSTRALIAN CAPITAL TERRITORY					
Non-employing businesses					
Email	2.1	36.1	6.0	57.3	96.3
Research	1.7	30.1	5.9	55.7	116.2
Making or receiving payments	*0.4	6.3	2.4	22.4	227.1
Other	1.0	17.8	5.8	55.0	198.9
Total small businesses	5.8	100.0	10.6	100.0	46.6
1-4 employees					
Email	3.2	58.1	4.0	65.7	15.5
Research	2.8	50.9	3.7	60.6	19.4
Making or receiving payments	1.3	24.1	2.0	32.5	29.0
Other	1.4	25.8	3.9	63.9	89.7
Total small businesses	5.4	100.0	6.0	100.0	6.9
5-19 employees					
Email	1.1	46.4	*1.3	69.1	8.8
Research	1.1	44.8	*1.2	65.2	7.2
Making or receiving payments	*0.5	20.5	*1.1	57.3	62.1
Other	*0.9	37.3	*1.3	68.4	24.2
Total small businesses	2.5	100.0	1.9	100.0	-15.3
Total					
Email	6.4	46.7	11.3	61.2	43.7
Research	5.6	41.0	10.8	58.2	51.1
Making or receiving payments	2.2	15.9	5.4	29.3	77.8
Other	3.3	24.5	11.0	59.3	111.6
Total small businesses	13.7	100.0	18.5	100.0	21.1

* estimate has a relative standard error of between 25% and 50% and should be used with caution

CHAPTER 4

HOME BASED SMALL BUSINESS

INTRODUCTION

In this survey, home based businesses have been identified according to two separate but overlapping definitions:

- where most of the work of the business was carried out at the home(s) of the operator(s) — these businesses are referred to as 'Businesses operated at home'; and
- where the business has no other premises owned or rented other than the home(s) of the operator(s) — these businesses are referred to as 'Businesses operated from home'.

As noted above, when combining figures for the two groups it is not simply a matter of adding the two groups, as some overlap does occur. The tables in this section show basic statistics on the two home based business groups separately along with the combined group, with most of the detailed data given for the combined group.

In the first edition of this publication (1995), businesses were considered home based if 'one or more of the operators of the business worked more hours at home than away from home'. This definition is similar to the category 'Businesses operated at home' (as defined above), but is not strictly comparable.

NUMBER OF HOME BASED BUSINESSES

Home based businesses make up a very large proportion of the total small business picture in Australia. At June 2001 there were an estimated 778,400 home based small businesses which were either operated from home or operated at home, which represented 67% of all small businesses. These businesses were operated by 998,800 people, which represents 63% of all small business operators. Since November 1999, the number of home based businesses have increased at an average annual rate of 16% while the number of operators involved increased at an average annual rate of 14% over the same period. These growth rates compare with an 11% average annual growth rate for small businesses and 9% for small business operators overall.

Looking at the individual types of home based business, there were 743,000 small businesses (96% of all home based small businesses) which were operated from home, representing an average annual increase of 15% since November 1999. These businesses involved 945,400 operators, up by an average annual increase of 13% since 1999.

In June 2001, there were 266,100 small businesses (34%) operating where most of the work was carried out at home (businesses operated at home) involving 352,700 operators. For this category growth was even stronger, with the number of businesses increasing at an average annual rate of 18% and the number of operators increasing at an average annual rate of 19% over the 19 month period.

Due to the fact that home businesses were operated without premises other than the home(s) of the operator(s), and at the same time most of the work of the business was

NUMBER OF HOME BASED BUSINESSES *continued*

carried out at the home(s) of the operator(s), businesses could be considered home based under both definitions. In June 2001 there were 230,700 of these businesses involving 299,300 operators.

4.1 HOME BASED SMALL BUSINESSES

	Number of businesses	Number of operators
	'000	'000
Operated from home	743	945
Operated at home	266	353
Operated both from home and at work	231	299
Operated either from home or at home	778	999
Total home based and non-home based businesses	1 162	1 597

OPERATORS OF HOME BASED BUSINESSES

By gender

At June 2001, across all home based small businesses, 681,500 (68%) operators were male. This represented an average annual increase of 13% over the 19 months since November 1999. There were 317,300 female operators of home based businesses which represented an average annual increase of 17% over the same period.

Looking at the two home based operation categories, males were less dominant in the at-home group where they made up 56% of all operators in this group. This compared to the from-home group where 69% of operators were male.

BY AGE

The age distribution of home based small business operators was very similar to the overall distribution for small businesses with 12% aged less than 30; 58% aged between 30 and 50; and 30% more than 50 years old.

By educational attainment

The educational attainment profile of home based small business operators is very similar to the profile for all small business operators. The differences being that 20% of home based operators had a non-school qualification of advanced diploma or above, compared to 21% for all small business operators. Some 40% of home based operators indicated a non-school qualification at a certificate level, compared to 38% of all small business operators.

By hours worked

Home based operators were more likely to be working part time than all small business operators, with 35% usually working less than 35 hours per week. This compares with 29% for all small business operators. Female home based business operators in particular were more likely to work part time in their business than those in all small businesses, with 66% working less than 35 hours compared to 58% overall. For home based males, only 20% were working part time compared to 15% overall.

Born in Australia and born overseas

The proportion of home based small business operators who were born overseas is 29%, the same proportion recorded for all small business operators.

<i>Number of businesses operated</i>	At June 2001, 94% of home based business operators operated just the one business; this compared with 93% across all small businesses.
<i>By State</i>	<p>Home based small business operators were distributed across States and Territories in a similar proportion to small business operators overall, with both reflecting the general population distribution within Australia.</p> <p>In terms of change since November 1999, strongest growth was recorded in the Australian Capital Territory with an average annual increase of 26% and South Australia with an average annual increase of 24%. At the other end of the scale, the number of home based business operators in the Northern Territory decreased at an average annual rate of 0.4%.</p>
CHARACTERISTICS OF HOME BASED BUSINESSES	<p>Table 4.4 shows a range of characteristics of home based small businesses. Of the 778,400 home based small businesses operating at June 2001, most (69%) were non-employing businesses. In addition, there were 218,200 (28%) home based businesses employing 1–4 people and 24,600 (3%) employing 5–19 people.</p> <p>In terms of age of business, home based businesses followed a similar distribution pattern to that of total small businesses with:</p> <ul style="list-style-type: none"> ■ 16% aged less than one year old; ■ 38% aged 1 to less than 5 years; ■ 17% aged 5 to less than 10 years; and ■ 29% aged 10 years or more.
<i>Operators per business</i>	In June 2001, 74% of home based small businesses were single operator businesses. This proportion was higher than that recorded for small businesses overall where 66% were single operator businesses. Conversely, there was a lower proportion of multi-operator home based small businesses than there were overall, with 25% of home based small businesses having two operators (compared to 31% overall) and 1.4% having 3 or more operators (compared to 2.5% overall).
<i>Predominate gender of operators</i>	<p>Most home based businesses (58%) were operated predominantly by males, which is similar to the figure recorded in November 1999 (57%). The number of home based businesses operated predominantly by females increased from 17% to 19% by June 2001.</p> <p>Just under one quarter (23%) of home based businesses were operated by equal numbers of males and females, an average annual increase of 9% since November 1999.</p>
<i>Use of computers and the Internet</i>	<p>At June 2001, 484,600 (62%) of Australia's home based businesses were using computers in their business operations. This was slightly below the proportion recorded for all small businesses (67%). In addition, 386,300 (50%) businesses had access to the Internet; this is marginally below the proportion for all small business (53%).</p> <p>The most common use being made of the Internet was for email (41% of home based small businesses). Other uses were:</p> <ul style="list-style-type: none"> ■ 39% were using the Internet for research purposes; ■ 16% were involved in e-commerce by making or receiving payments via the Internet; ■ 40% were using the Internet for other purposes.

4.2

HOME BASED OPERATORS, by sex

	NOVEMBER 1999		JUNE 2001		Average annual rate of change
	Number of operators	Proportion of operators	Number of operators	Proportion of operators	
	'000	%	'000	%	
MALES					
Total operators	563.9	100.0	681.5	100.0	12.7
Home based business					
Operated at home	147.4	26.1	196.5	28.8	19.9
Operated from home	545.7	96.8	652.4	95.7	12.0
Age of operator					
Aged less than 30	66.5	11.8	82.4	12.1	14.6
Aged 30–50	325.6	57.7	378.8	55.6	10.0
Aged greater than 50	171.8	30.5	220.2	32.3	16.9
Level of highest non-school qualification					
With non-school qualifications					
Advanced diploma or above	na	na	116.5	17.1	na
Certificate	na	na	314.8	46.2	na
Without non-school qualifications	208.5	37.0	250.1	36.7	12.2
Hours worked by operators					
1–10 hours worked	30.0	5.3	38.6	5.7	17.3
11–20 hours worked	35.2	6.2	40.2	5.9	8.7
21–34 hours worked	50.5	9.0	58.9	8.6	10.1
35–50 hours worked	303.0	53.7	375.7	55.1	14.5
51–75 hours worked	124.4	22.1	147.9	21.7	11.5
More than 75 hours worked	20.7	3.7	20.2	3.0	–1.6
Australian born and overseas born operators					
Born in Australia	395.1	70.1	474.7	69.7	12.3
Born overseas	168.8	29.9	206.7	30.3	13.7
Number of businesses operated					
One business	530.8	94.1	645.0	94.6	13.1
Two businesses	27.1	4.8	27.9	4.1	1.8
Three businesses or more	6.0	1.1	8.6	1.3	25.1
State					
New South Wales	186.8	33.1	223.6	32.8	12.0
Victoria	146.4	26.0	161.9	23.8	6.6
Queensland	113.8	20.2	139.3	20.4	13.6
South Australia	34.9	6.2	50.1	7.4	25.7
Western Australia	60.0	10.6	76.9	11.3	17.0
Tasmania	10.6	1.9	12.9	1.9	12.9
Northern Territory(a)	4.2	0.7	4.6	0.7	6.5
Australian Capital Territory	7.3	1.3	12.2	1.8	38.6

na not available

(a) Refers to mainly urban areas only.

4.2**HOME BASED OPERATORS, by sex** *continued*

	NOVEMBER 1999		JUNE 2001		Average annual rate of change
	Number of operators	Proportion of operators	Number of operators	Proportion of operators	
	'000	%	'000	%	
.....					
FEMALES					
Total operators	247.3	100.0	317.3	100.0	17.1
Home based business					
Operated at home	120.0	48.5	156.2	49.2	18.1
Operated from home	233.2	94.3	293.0	92.3	15.5
Age of operator					
Aged less than 30	28.6	11.6	38.4	12.1	20.5
Aged 30–50	149.3	60.4	198.1	62.4	19.5
Aged greater than 50	69.4	28.0	80.8	25.5	10.1
Level of highest non-school qualification					
With non-school qualifications					
Advanced diploma or above	na	na	77.7	24.5	na
Certificate	na	na	85.2	26.9	na
Without non-school qualifications	134.6	54.4	154.4	48.7	9.1
Hours worked by operators					
1–10 hours worked	79.1	32.0	90.7	28.6	9.1
11–20 hours worked	51.7	20.9	65.8	20.7	16.4
21–34 hours worked	34.7	14.0	52.2	16.5	29.5
35–50 hours worked	57.8	23.4	82.7	26.1	25.4
51–75 hours worked	17.6	7.1	21.8	6.9	14.5
More than 75 hours worked	6.3	2.6	*4.0	1.3	–25.0
Australian born and overseas born operators					
Born in Australia	186.8	75.5	238.7	75.2	16.7
Born overseas	60.5	24.5	78.7	24.8	18.1
Number of businesses operated					
One business	234.3	94.8	297.9	93.9	16.4
Two businesses	11.8	4.8	15.7	4.9	19.5
Three businesses or more	*1.1	0.5	*3.7	1.2	114.5
State					
New South Wales	68.9	27.9	99.6	31.4	26.2
Victoria	65.3	26.4	69.9	22.0	4.4
Queensland	55.2	22.3	71.8	22.6	18.0
South Australia	18.4	7.5	25.2	8.0	21.9
Western Australia	26.6	10.8	37.4	11.8	23.8
Tasmania	5.6	2.3	6.1	1.9	6.4
Northern Territory(a)	2.0	0.8	*1.5	0.5	–15.7
Australian Capital Territory	5.2	2.1	5.7	1.8	6.2

na not available

* estimate has a relative standard error of between 25% and 50% and should be used with caution

(a) Refers to mainly urban areas only.

4.2

HOME BASED OPERATORS, by sex *continued*

	NOVEMBER 1999		JUNE 2001		Average annual rate of change
	Number of operators	Proportion of operators	Number of operators	Proportion of operators	
	'000	%	'000	%	%
PERSONS					
Total operators	811.2	100.0	998.8	100.0	14.0
Home based business					
Operated at home	267.4	33.0	352.7	35.3	19.1
Operated from home	778.8	96.0	945.4	94.7	13.0
Age of operator					
Aged less than 30	95.0	11.7	120.9	12.1	16.4
Aged 30–50	474.9	58.5	576.9	57.8	13.1
Aged greater than 50	241.2	29.7	301.0	30.1	15.0
Level of highest non-school qualification					
With non-school qualifications					
Advanced diploma or above	na	na	194.3	19.5	na
Certificate	na	na	400.1	40.1	na
Without non-school qualifications	343.1	42.3	404.4	40.5	11.0
Hours worked by operators					
1–10 hours worked	109.0	13.4	129.3	12.9	11.4
11–20 hours worked	87.0	10.7	106.0	10.6	13.3
21–34 hours worked	85.2	10.5	111.1	11.1	18.2
35–50 hours worked	360.9	44.5	458.5	45.9	16.3
51–75 hours worked	142.0	17.5	169.7	17.0	11.9
More than 75 hours worked	27.0	3.3	24.2	2.4	–6.7
Australian born and overseas born operators					
Born in Australia	581.9	71.7	713.4	71.4	13.7
Born overseas	229.3	28.3	285.4	28.6	14.8
Number of businesses operated					
One business	765.1	94.3	942.9	94.4	14.1
Two businesses	38.9	4.8	43.5	4.4	7.3
Three businesses or more	7.1	0.9	12.3	1.2	41.2
State					
New South Wales	255.7	31.5	323.2	32.4	15.9
Victoria	211.7	26.1	231.8	23.2	5.9
Queensland	169.0	20.8	211.1	21.1	15.1
South Australia	53.3	6.6	75.4	7.5	24.4
Western Australia	86.6	10.7	114.3	11.4	19.1
Tasmania	16.2	2.0	19.0	1.9	10.7
Northern Territory(a)	6.2	0.8	6.1	0.6	–0.4
Australian Capital Territory	12.4	1.5	17.9	1.8	25.7

na not available

(a) Refers to mainly urban areas only.

4.3**HOME BASED OPERATORS, by States and Territories**

	NOVEMBER 1999		JUNE 2001		Average annual rate of change
	Number of operators	Proportion of operators	Number of operators	Proportion of operators	
	'000	%	'000	%	
		%		%	
.....					
AUSTRALIA					
Total operators	811.2	100.0	998.8	100.0	14.0
Home based business					
Operated at home	267.4	33.0	352.7	35.3	19.1
Operated from home	778.8	96.0	945.4	94.7	13.0
Sex of operators					
Males	563.9	69.5	681.5	68.2	12.7
Females	247.3	30.5	317.3	31.8	17.1
Age of operators					
Aged less than 30	95.0	11.7	120.9	12.1	16.4
Aged 30–50	474.9	58.5	576.9	57.8	13.1
Aged greater than 50	241.2	29.7	301.0	30.1	15.0
Non-school qualifications					
With non-school qualifications					
Advance diploma or above	na	na	194.3	19.5	na
Certificate	na	na	400.1	40.1	na
Without non-school qualifications	343.1	42.3	404.4	40.5	11.0
Hours worked by operators					
1–10 hours worked	109.0	13.4	129.3	12.9	11.4
11–20 hours worked	87.0	10.7	106.0	10.6	13.3
21–34 hours worked	85.2	10.5	111.1	11.1	18.2
35–50 hours worked	360.9	44.5	458.5	45.9	16.3
51–75 hours worked	142.0	17.5	169.7	17.0	11.9
More than 75 hours worked	27.0	3.3	24.2	2.4	–6.7
Born in Australia or born overseas					
Born in Australia	581.9	71.7	713.4	71.4	13.7
Born overseas	229.3	28.3	285.4	28.6	14.8
Number of businesses operated					
One business	765.1	94.3	942.9	94.4	14.1
Two businesses	38.9	4.8	43.5	4.4	7.3
Three businesses or more	7.1	0.9	12.3	1.2	41.2
.....					
na not available					

4.3**HOME BASED OPERATORS, by States and Territories** *continued*

	NOVEMBER 1999		JUNE 2001		Average annual rate of change
	Number of operators	Proportion of operators	Number of operators	Proportion of operators	
	'000	%	'000	%	
.....					
NEW SOUTH WALES					
Total operators	255.7	100.0	323.2	100.0	15.9
Home based business					
Operated at home	82.1	32.1	119.9	37.1	27.0
Operated from home	246.4	96.4	306.2	94.7	14.7
Sex of operators					
Males	186.8	73.1	223.6	69.2	12.0
Females	68.9	26.9	99.6	30.8	26.2
Age of operators					
Aged less than 30	30.7	12.0	42.8	13.3	23.4
Aged 30–50	144.3	56.4	177.4	54.9	13.9
Aged greater than 50	80.7	31.6	102.9	31.9	16.6
Non-school qualifications					
With non-school qualifications					
Advance diploma or above	na	na	67.6	20.9	na
Certificate	na	na	133.6	41.3	na
Without non-school qualifications	94.4	36.9	122.0	37.7	17.5
Hours worked by operators					
1–10 hours worked	28.3	11.1	42.2	13.1	28.8
11–20 hours worked	25.8	10.1	30.9	9.6	11.9
21–34 hours worked	24.7	9.6	29.4	9.1	11.7
35–50 hours worked	127.8	50.0	159.0	49.2	14.8
51–75 hours worked	41.1	16.1	56.2	17.4	21.9
More than 75 hours worked	7.9	3.1	*5.5	1.7	–21.2
Born in Australia or born overseas					
Born in Australia	174.8	68.4	222.9	69.0	16.6
Born overseas	80.9	31.6	100.3	31.0	14.5
Number of businesses operated					
One business	243.7	95.3	303.3	93.8	14.8
Two businesses	10.3	4.0	15.3	4.7	28.7
Three businesses or more	**1.7	0.7	*4.6	1.4	86.7

na not available

* estimate has a relative standard error of between 25% and 50% and should be used with caution

** estimate has a relative standard error greater than 50% and is considered too unreliable for general use

4.3**HOME BASED OPERATORS, by States and Territories** *continued*

	NOVEMBER 1999		JUNE 2001		Average annual rate of change
	Number of operators	Proportion of operators	Number of operators	Proportion of operators	
	'000	%	'000	%	
.....					
VICTORIA					
Total operators	211.7	100.0	231.8	100.0	5.9
Home based business					
Operated at home	76.2	36.0	82.3	35.5	5.0
Operated from home	201.4	95.2	218.8	94.4	5.3
Sex of operators					
Males	146.4	69.1	161.9	69.8	6.6
Females	65.3	30.9	69.9	30.2	4.4
Age of operators					
Aged less than 30	20.2	9.5	24.4	10.5	12.8
Aged 30–50	128.6	60.8	129.4	55.8	0.4
Aged greater than 50	62.9	29.7	78.0	33.7	14.6
Non-school qualifications					
With non-school qualifications					
Advance diploma or above	na	na	47.7	20.6	na
Certificate	na	na	83.5	36.0	na
Without non-school qualifications	90.0	42.5	100.6	43.4	7.3
Hours worked by operators					
1–10 hours worked	28.8	13.6	31.7	13.7	6.1
11–20 hours worked	24.5	11.6	26.7	11.5	5.5
21–34 hours worked	23.9	11.3	27.7	11.9	9.8
35–50 hours worked	90.1	42.6	101.6	43.8	7.9
51–75 hours worked	38.8	18.3	38.9	16.8	0.2
More than 75 hours worked	5.6	2.7	*5.3	2.3	–3.5
Born in Australia or born overseas					
Born in Australia	155.5	73.5	172.1	74.2	6.6
Born overseas	56.2	26.5	59.7	25.8	4.0
Number of businesses operated					
One business	199.8	94.4	220.7	95.2	6.5
Two businesses	9.5	4.5	9.0	3.9	–3.4
Three businesses or more	*2.4	1.1	*2.1	0.9	–8.4

na not available

* estimate has a relative standard error of between 25% and 50% and should be used with caution

4.3**HOME BASED OPERATORS, by States and Territories** *continued*

	NOVEMBER 1999		JUNE 2001		
	<i>Number of operators</i>	<i>Proportion of operators</i>	<i>Number of operators</i>	<i>Proportion of operators</i>	<i>Average annual rate of change</i>
	'000	%	'000	%	%
.....					
QUEENSLAND					
Total operators	169.0	100.0	211.1	100.0	15.1
Home based business					
Operated at home	48.3	28.6	71.6	33.9	28.3
Operated from home	163.2	96.6	198.1	93.8	13.0
Sex of operators					
Males	113.8	67.3	139.3	66.0	13.6
Females	55.2	32.7	71.8	34.0	18.0
Age of operators					
Aged less than 30	21.3	12.6	24.5	11.6	9.3
Aged 30–50	101.0	59.8	132.3	62.7	18.6
Aged greater than 50	46.7	27.6	54.3	25.7	9.9
Non-school qualifications					
With non-school qualifications					
Advance diploma or above	na	na	35.0	16.6	na
Certificate	na	na	88.4	41.9	na
Without non-school qualifications	78.9	46.7	87.7	41.5	6.9
Hours worked by operators					
1–10 hours worked	25.8	15.3	24.6	11.7	–2.9
11–20 hours worked	15.6	9.3	24.5	11.6	32.8
21–34 hours worked	16.6	9.8	25.8	12.2	32.4
35–50 hours worked	66.7	39.4	89.0	42.2	20.0
51–75 hours worked	35.0	20.7	40.0	18.9	8.9
More than 75 hours worked	9.4	5.5	7.1	3.4	–15.9
Born in Australia or born overseas					
Born in Australia	125.7	74.4	159.5	75.5	16.2
Born overseas	43.3	25.6	51.7	24.5	11.7
Number of businesses operated					
One business	157.1	92.9	197.9	93.8	15.7
Two businesses	10.1	6.0	9.8	4.6	–1.7
Three businesses or more	*1.9	1.1	*3.4	1.6	45.1

na not available

* estimate has a relative standard error of between 25% and 50% and should be used with caution

4.3**HOME BASED OPERATORS, by States and Territories** *continued*

	NOVEMBER 1999		JUNE 2001		Average annual rate of change
	Number of operators	Proportion of operators	Number of operators	Proportion of operators	
	'000	%	'000	%	
.....					
SOUTH AUSTRALIA					
Total operators	53.3	100.0	75.4	100.0	24.4
Home based business					
Operated at home	21.2	39.8	25.6	34.0	12.5
Operated from home	51.7	97.0	72.5	96.2	23.8
Sex of operators					
Males	34.9	65.4	50.1	66.5	25.7
Females	18.4	34.6	25.2	33.5	21.9
Age of operators					
Aged less than 30	8.1	15.1	8.1	10.7	-0.2
Aged 30-50	26.7	50.0	46.5	61.7	42.0
Aged greater than 50	18.6	34.8	20.8	27.6	7.5
Non-school qualifications					
With non-school qualifications					
Advance diploma or above	na	na	13.3	17.6	na
Certificate	na	na	28.4	37.7	na
Without non-school qualifications	27.4	51.4	33.6	44.6	13.8
Hours worked by operators					
1-10 hours worked	7.7	14.5	9.4	12.5	13.2
11-20 hours worked	7.1	13.3	8.8	11.7	15.0
21-34 hours worked	6.0	11.2	11.5	15.2	50.9
35-50 hours worked	23.4	43.9	32.0	42.5	21.9
51-75 hours worked	7.7	14.5	11.7	15.5	29.4
More than 75 hours worked	*1.4	2.6	*2.0	2.6	25.4
Born in Australia or born overseas					
Born in Australia	39.6	74.2	54.4	72.2	22.4
Born overseas	13.8	25.8	20.9	27.8	30.2
Number of businesses operated					
One business	49.7	93.2	73.1	97.0	27.6
Two businesses	3.2	6.0	*1.7	2.2	-33.5
Three businesses or more	**0.4	0.8	**0.6	0.7	21.3

na not available

* estimate has a relative standard error of between 25% and 50% and should be used with caution

** estimate has a relative standard error greater than 50% and is considered too unreliable for general use

4.3

HOME BASED OPERATORS, by States and Territories *continued*

	NOVEMBER 1999		JUNE 2001		Average annual rate of change
	Number of operators	Proportion of operators	Number of operators	Proportion of operators	
	'000	%	'000	%	%
WESTERN AUSTRALIA					
Total operators	86.6	100.0	114.3	100.0	19.1
Home based business					
Operated at home	26.2	30.2	37.1	32.5	24.7
Operated from home	83.3	96.2	108.4	94.9	18.1
Sex of operators					
Males	60.0	69.2	76.9	67.3	17.0
Females	26.6	30.8	37.4	32.7	23.8
Age of operators					
Aged less than 30	11.8	13.7	16.3	14.3	22.4
Aged 30–50	53.1	61.3	67.4	58.9	16.3
Aged greater than 50	21.7	25.1	30.6	26.8	24.2
Non-school qualifications					
With non-school qualifications					
Advance diploma or above	na	na	20.5	17.9	na
Certificate	na	na	48.5	42.5	na
Without non-school qualifications	38.9	44.9	45.3	39.6	10.1
Hours worked by operators					
1–10 hours worked	13.3	15.4	16.1	14.1	12.7
11–20 hours worked	9.2	10.6	11.7	10.2	16.1
21–34 hours worked	11.2	12.9	11.4	10.0	1.3
35–50 hours worked	38.4	44.4	56.8	49.7	27.9
51–75 hours worked	12.7	14.7	15.5	13.6	13.6
More than 75 hours worked	*1.8	2.1	*2.8	2.5	33.2
Born in Australia or born overseas					
Born in Australia	57.7	66.6	71.4	62.5	14.4
Born overseas	29.0	33.4	42.9	37.5	28.2
Number of businesses operated					
One business	82.9	95.7	108.1	94.6	18.2
Two businesses	3.5	4.0	4.8	4.2	22.6
Three businesses or more	**0.2	0.2	*1.4	1.2	223.6

na not available

* estimate has a relative standard error of between 25% and 50% and should be used with caution

** estimate has a relative standard error greater than 50% and is considered too unreliable for general use

4.3**HOME BASED OPERATORS, by States and Territories** *continued*

	NOVEMBER 1999		JUNE 2001		
	Number of operators	Proportion of operators	Number of operators	Proportion of operators	Average annual rate of change
	'000	%	'000	%	%
.....					
TASMANIA					
Total operators	16.2	100.0	19.0	100.0	10.7
Home based business					
Operated at home	6.2	38.3	7.3	38.2	10.4
Operated from home	14.8	91.2	18.3	96.1	14.4
Sex of operators					
Males	10.6	65.6	12.9	67.7	12.9
Females	5.6	34.4	6.1	32.3	6.4
Age of operators					
Aged less than 30	*0.9	5.6	2.1	11.0	69.1
Aged 30–50	10.1	62.1	10.0	52.6	–0.3
Aged greater than 50	5.2	32.2	6.9	36.3	19.4
Non-school qualifications					
With non-school qualifications					
Advance diploma or above	na	na	3.6	19.1	na
Certificate	na	na	8.9	46.7	na
Without non-school qualifications	7.1	43.7	6.5	34.2	–5.2
Hours worked by operators					
1–10 hours worked	2.5	15.2	2.8	14.6	7.8
11–20 hours worked	2.1	13.2	*1.7	8.8	–14.0
21–34 hours worked	*1.2	7.5	3.1	16.5	82.2
35–50 hours worked	7.1	44.0	7.9	41.8	7.1
51–75 hours worked	2.9	17.8	2.8	14.8	–1.8
More than 75 hours worked	**0.4	2.3	*0.7	3.5	43.8
Born in Australia or born overseas					
Born in Australia	14.5	89.8	16.9	89.2	10.2
Born overseas	1.6	10.2	2.0	10.8	14.8
Number of businesses operated					
One business	14.8	91.8	17.0	89.7	9.1
Two businesses	*1.1	7.1	*1.6	8.3	22.6
Three businesses or more	**0.2	1.2	**0.4	1.9	51.7

na not available

* estimate has a relative standard error of between 25% and 50% and should be used with caution

** estimate has a relative standard error greater than 50% and is considered too unreliable for general use

4.3

HOME BASED OPERATORS, by States and Territories *continued*

	NOVEMBER 1999		JUNE 2001		Average annual rate of change
	Number of operators	Proportion of operators	Number of operators	Proportion of operators	
	'000	%	'000	%	
.....					
NORTHERN TERRITORY (a)					
Total operators	6.2	100.0	6.1	100.0	-0.4
Home based business					
Operated at home	2.0	31.8	*1.4	22.4	-20.2
Operated from home	5.6	90.7	5.9	96.4	3.5
Sex of operators					
Males	4.2	67.5	4.6	75.0	6.5
Females	2.0	32.5	*1.5	25.0	-15.7
Age of operators					
Aged less than 30	*0.8	12.8	0.6	10.3	-13.2
Aged 30-50	4.3	70.2	3.9	64.1	-5.9
Aged greater than 50	*1.1	17.0	1.6	25.6	28.9
Non-school qualifications					
With non-school qualifications					
Advance diploma or above	na	na	**0.5	8.4	na
Certificate	na	na	2.8	45.2	na
Without non-school qualifications	2.5	40.8	2.9	46.4	8.0
Hours worked by operators					
1-10 hours worked	**0.5	7.5	*0.6	9.8	17.9
11-20 hours worked	*0.7	11.9	**0.3	5.5	-39.2
21-34 hours worked	**0.3	5.1	**0.4	6.2	12.4
35-50 hours worked	2.5	40.0	3.2	51.8	17.3
51-75 hours worked	1.8	28.8	*1.3	20.7	-19.2
More than 75 hours worked	**0.4	6.7	**0.4	6.0	-6.4
Born in Australia or born overseas					
Born in Australia	4.6	74.6	4.0	65.8	-8.0
Born overseas	1.6	25.4	2.1	34.2	20.3
Number of businesses operated					
One business	5.7	92.1	6.1	100.0	4.9
Two businesses	*0.5	7.9	—	—	na
Three businesses or more	—	—	—	—	na

* estimate has a relative standard error of between 25% and 50% and should be used with caution

na not available

** estimate has a relative standard error greater than 50% and is considered too unreliable for general use

— nil or rounded to zero (including null cells)

(a) Refers to mainly urban areas only.

4.3**HOME BASED OPERATORS, by States and Territories** *continued*

	NOVEMBER 1999		JUNE 2001		Average annual rate of change
	Number of operators	Proportion of operators	Number of operators	Proportion of operators	
	'000	%	'000	%	
.....					
AUSTRALIAN CAPITAL TERRITORY					
Total operators	12.4	100.0	17.9	100.0	25.7
Home based business					
Operated at home	5.3	42.2	7.4	41.4	24.1
Operated from home	12.3	99.0	17.2	96.2	23.5
Sex of operators					
Males	7.3	58.4	12.2	68.1	38.6
Females	5.2	41.6	5.7	31.9	6.2
Age of operators					
Aged less than 30	*1.2	9.9	2.0	11.1	35.4
Aged 30–50	6.9	55.4	10.1	56.5	27.4
Aged greater than 50	4.3	34.8	5.8	32.4	20.2
Non-school qualifications					
With non-school qualifications					
Advance diploma or above	na	na	6.1	33.8	na
Certificate	na	na	5.9	32.8	na
Without non-school qualifications	3.9	31.5	6.0	33.3	30.2
Hours worked by operators					
1–10 hours worked	2.1	16.9	1.9	10.5	–6.7
11–20 hours worked	1.8	14.7	*1.4	7.6	–16.7
21–34 hours worked	1.5	11.7	1.8	10.3	16.0
35–50 hours worked	4.8	38.9	9.0	50.3	48.0
51–75 hours worked	2.1	16.9	3.4	18.7	34.3
More than 75 hours worked	**0.1	1.0	**0.4	2.5	126.5
Born in Australia or born overseas					
Born in Australia	9.5	76.5	12.1	67.7	16.3
Born overseas	2.9	23.5	5.8	32.3	53.8
Number of businesses operated					
One business	11.4	91.4	16.6	92.8	26.9
Two businesses	*0.7	5.6	*1.3	7.2	46.4
Three businesses or more	**0.4	3.0	—	—	na

* estimate has a relative standard error of between 25% and 50% and should be used with caution

na not available

** estimate has a relative standard error greater than 50% and is considered too unreliable for general use

— nil or rounded to zero (including null cells)

4.4

HOME BASED SMALL BUSINESSES BY STATES AND TERRITORIES

	NOVEMBER 1999		JUNE 2001 . . .		Average annual rate of change	
	<i>Number of businesses</i>	<i>Proportion of businesses</i>	<i>Number of businesses</i>	<i>Proportion of businesses</i>		
	'000	%	'000	%		
.....						
AUSTRALIA						
Total small businesses	615.5	100.0	778.4	100.0	16.0	
Home based business						
Operated at home	204.3	33.2	266.1	34.2	18.2	
Operated from home	593.2	96.4	743.0	95.5	15.3	
Gender predominance						
Predominantly male	350.7	57.0	448.5	57.6	16.8	
Predominantly female	106.2	17.3	148.9	19.1	23.8	
Equal male and female	158.6	25.8	180.9	23.2	8.7	
Employer size group						
Non-employing businesses	393.6	63.9	535.6	68.8	21.5	
1-4 employees	205.6	33.4	218.2	28.0	3.8	
5-19 employees	16.4	2.7	24.6	3.2	29.3	
Age of business						
Less than 1 year	72.9	11.8	124.2	15.9	40.0	
1 to less than 5 years	220.7	35.9	294.1	37.8	19.9	
5 to less than 10 years	136.4	22.2	133.0	17.1	-1.5	
10 or more years	185.5	30.1	227.1	29.2	13.6	
Number of operators						
1 operator	432.7	70.3	574.3	73.8	19.6	
2 operators	173.2	28.1	193.2	24.8	7.1	
3 or more operators	9.5	1.6	10.9	1.4	8.9	
Use of computers						
Has a computer	334.7	54.4	484.6	62.3	26.3	
Does not have a computer	280.8	45.6	293.8	37.7	2.9	
Internet use						
Has computer and access to the Internet	201.5	32.7	386.3	49.6	50.8	
Internet used for						
Email	163.9	26.6	320.0	41.1	52.6	
Research	139.6	22.7	304.1	39.1	63.5	
Making or receiving payments	40.2	6.5	123.8	15.9	103.6	
Other	77.1	12.5	308.9	39.7	140.4	

4.4**HOME BASED SMALL BUSINESSES BY STATES AND TERRITORIES** *continued*

	NOVEMBER 1999		JUNE 2001 . . .		Average annual rate of change
	Number of businesses	Proportion of businesses	Number of businesses	Proportion of businesses	
	'000	%	'000	%	
NEW SOUTH WALES					
Total small businesses	196.6	100.0	254.4	100.0	17.7
Home based business					
Operated at home	62.9	32.0	87.4	34.4	23.1
Operated from home	190.5	96.9	243.0	95.5	16.6
Gender predominance					
Predominantly male	123.3	62.7	151.9	59.7	14.1
Predominantly female	30.1	15.3	47.6	18.7	33.6
Equal male and female	43.2	22.0	54.9	21.6	16.3
Employer size group					
Non-employing businesses	113.8	57.9	163.2	64.1	25.5
1–4 employees	77.4	39.4	84.2	33.1	5.4
5–19 employees	5.4	2.7	7.0	2.8	18.5
Age of business					
Less than 1 year	23.3	11.9	41.0	16.1	42.7
1 to less than 5 years	68.1	34.6	100.7	39.6	28.1
5 to less than 10 years	43.7	22.2	35.8	14.1	–11.9
10 or more years	61.5	31.3	76.9	30.2	15.2
Number of operators					
1 operator	144.0	73.2	191.9	75.4	19.9
2 operators	48.0	24.4	58.5	23.0	13.3
3 or more operators	4.6	2.4	*4.1	1.6	–7.9
Use of computers					
Has a computer	105.8	53.8	157.1	61.8	28.4
Does not have a computer	90.8	46.2	97.3	38.2	4.4
Internet use					
Has computer and access to the Internet	64.2	32.6	130.9	51.4	56.8
Internet used for					
Email	54.0	27.5	111.6	43.9	58.1
Research	43.8	22.3	105.4	41.4	74.1
Making or receiving payments	15.2	7.7	39.6	15.6	83.0
Other	21.1	10.7	107.1	42.1	179.1

* estimate has a relative standard error of between 25% and 50% and should be used with caution

4.4

HOME BASED SMALL BUSINESSES BY STATES AND TERRITORIES *continued*

	NOVEMBER 1999		JUNE 2001 . . .		Average annual rate of change
	Number of businesses	Proportion of businesses	Number of businesses	Proportion of businesses	
	'000	%	'000	%	
.....					
VICTORIA					
Total small businesses	162.2	100.0	181.8	100.0	7.5
Home based business					
Operated at home	58.0	35.8	61.8	34.0	4.1
Operated from home	155.1	95.6	173.7	95.6	7.4
Gender predominance					
Predominantly male	90.3	55.7	108.7	59.8	12.4
Predominantly female	31.0	19.1	31.4	17.3	0.9
Equal male and female	40.9	25.2	41.6	22.9	1.1
Employer size group					
Non-employing businesses	102.9	63.5	121.6	66.9	11.1
1-4 employees	55.3	34.1	54.0	29.7	-1.5
5-19 employees	4.0	2.5	6.2	3.4	32.8
Age of business					
Less than 1 year	14.2	8.7	24.9	13.7	42.7
1 to less than 5 years	55.1	34.0	62.8	34.6	8.6
5 to less than 10 years	36.4	22.5	32.4	17.9	-7.0
10 or more years	56.5	34.8	61.6	33.9	5.6
Number of operators					
1 operator	115.1	71.0	134.9	74.2	10.5
2 operators	45.2	27.9	44.5	24.5	-1.0
3 or more operators	*1.9	1.1	*2.4	1.3	16.7
Use of computers					
Has a computer	86.1	53.1	114.3	62.9	19.6
Does not have a computer	76.1	46.9	67.5	37.1	-7.3
Internet use					
Has computer and access to the Internet	54.4	33.6	82.9	45.6	30.5
Internet used for					
Email	43.7	26.9	69.3	38.1	33.8
Research	36.5	22.5	65.2	35.8	44.1
Making or receiving payments	10.9	6.7	28.6	15.8	84.3
Other	21.1	13.0	66.1	36.4	105.6

* estimate has a relative standard error of between 25% and 50% and should be used with caution

4.4**HOME BASED SMALL BUSINESSES BY STATES AND TERRITORIES** *continued*

	NOVEMBER 1999		JUNE 2001 . . .		Average annual rate of change	
	Number of businesses	Proportion of businesses	Number of businesses	Proportion of businesses		
	'000	%	'000	%		
.....						
QUEENSLAND						
Total small businesses	123.2	100.0	161.5	100.0	18.6	
Home based business						
Operated at home	36.3	29.5	54.2	33.6	28.8	
Operated from home	119.2	96.7	153.1	94.9	17.2	
Gender predominance						
Predominantly male	66.0	53.6	85.9	53.2	18.1	
Predominantly female	18.0	14.6	32.5	20.2	45.2	
Equal male and female	39.2	31.8	43.0	26.6	6.0	
Employer size group						
Non-employing businesses	82.7	67.1	117.6	72.9	24.9	
1-4 employees	37.2	30.1	37.5	23.2	0.6	
5-19 employees	3.3	2.7	6.3	3.9	49.5	
Age of business						
Less than 1 year	15.4	12.5	25.8	16.0	38.3	
1 to less than 5 years	47.7	38.7	66.0	40.9	22.7	
5 to less than 10 years	27.1	22.0	28.6	17.7	3.4	
10 or more years	32.9	26.7	41.0	25.4	14.9	
Number of operators						
1 operator	79.5	64.5	114.1	70.7	25.7	
2 operators	42.0	34.1	45.7	28.3	5.4	
3 or more operators	*1.7	1.4	*1.7	1.0	-1.9	
Use of computers						
Has a computer	67.4	54.7	101.3	62.7	29.4	
Does not have a computer	55.9	45.3	60.1	37.3	4.8	
Internet use						
Has computer and access to the Internet	39.6	32.2	83.6	51.8	60.3	
Internet used for						
Email	31.8	25.8	68.0	42.1	61.6	
Research	28.0	22.8	66.2	41.0	72.1	
Making or receiving payments	5.9	4.8	28.6	17.7	171.6	
Other	17.8	14.5	65.5	40.5	127.5	

* estimate has a relative standard error of between 25% and 50% and should be used with caution

4.4

HOME BASED SMALL BUSINESSES BY STATES AND TERRITORIES *continued*

	NOVEMBER 1999		JUNE 2001 . . .		Average annual rate of change
	Number of businesses	Proportion of businesses	Number of businesses	Proportion of businesses	
	'000	%	'000	%	
SOUTH AUSTRALIA					
Total small businesses	41.2	100.0	59.2	100.0	25.6
Home based business					
Operated at home	16.4	39.8	19.8	33.5	12.7
Operated from home	40.1	97.2	57.2	96.6	25.2
Gender predominance					
Predominantly male	21.8	52.9	33.5	56.7	31.2
Predominantly female	9.3	22.5	12.8	21.6	22.3
Equal male and female	10.1	24.6	12.9	21.7	16.2
Employer size group					
Non-employing businesses	30.0	72.8	45.2	76.4	29.5
1-4 employees	10.3	25.1	12.8	21.6	14.5
5-19 employees	*0.9	2.1	*1.2	2.0	19.4
Age of business					
Less than 1 year	6.8	16.4	10.6	18.0	33.1
1 to less than 5 years	12.7	30.8	20.4	34.5	35.0
5 to less than 10 years	8.8	21.3	10.8	18.2	13.7
10 or more years	13.0	31.5	17.3	29.3	20.1
Number of operators					
1 operator	29.9	72.6	44.4	75.0	28.3
2 operators	10.8	26.1	13.8	23.2	16.7
3 or more operators	**0.5	1.3	*1.0	1.7	50.3
Use of computers					
Has a computer	20.5	49.6	35.0	59.1	40.3
Does not have a computer	20.8	50.4	24.2	40.9	10.1
Internet use					
Has computer and access to the Internet	11.7	28.3	27.3	46.1	70.8
Internet used for					
Email	8.8	21.3	21.6	36.5	76.7
Research	7.6	18.5	21.1	35.7	90.0
Making or receiving payments	2.1	5.1	8.1	13.6	133.9
Other	3.9	9.5	20.2	34.2	181.5

* estimate has a relative standard error of between 25% and 50% and should be used with caution

** estimate has a relative standard error greater than 50% and is considered too unreliable for general use

4.4**HOME BASED SMALL BUSINESSES BY STATES AND TERRITORIES** *continued*

	NOVEMBER 1999		JUNE 2001 . . .		Average annual rate of change
	Number of businesses	Proportion of businesses	Number of businesses	Proportion of businesses	
	'000	%	'000	%	
.....					
WESTERN AUSTRALIA					
Total small businesses	65.5	100.0	87.7	100.0	20.2
Home based business					
Operated at home	20.0	30.6	29.9	34.1	28.7
Operated from home	63.3	96.6	83.1	94.8	18.8
Gender predominance					
Predominantly male	36.1	55.2	48.4	55.2	20.2
Predominantly female	10.9	16.6	18.1	20.6	37.8
Equal male and female	18.4	28.2	21.2	24.2	9.1
Employer size group					
Non-employing businesses	46.4	70.8	64.6	73.7	23.3
1-4 employees	17.7	27.0	19.8	22.6	7.3
5-19 employees	*1.4	2.2	3.3	3.7	69.6
Age of business					
Less than 1 year	10.3	15.7	16.7	19.1	35.7
1 to less than 5 years	26.6	40.6	30.6	34.9	9.2
5 to less than 10 years	13.8	21.0	17.8	20.3	17.5
10 or more years	14.8	22.6	22.6	25.8	30.7
Number of operators					
1 operator	44.9	68.6	63.4	72.3	24.3
2 operators	20.1	30.7	22.9	26.1	8.7
3 or more operators	**0.5	0.7	*1.3	1.5	92.6
Use of computers					
Has a computer	38.9	59.4	55.1	62.9	24.7
Does not have a computer	26.6	40.6	32.5	37.1	13.6
Internet use					
Has computer and access to the Internet	21.8	33.3	43.0	49.1	53.7
Internet used for					
Email	17.2	26.2	33.7	38.5	53.1
Research	15.7	24.0	30.8	35.1	53.1
Making or receiving payments	3.9	5.9	12.2	13.9	106.9
Other	8.9	13.5	35.2	40.1	138.9

* estimate has a relative standard error of between 25% and 50% and should be used with caution

** estimate has a relative standard error greater than 50% and is considered too unreliable for general use

4.4

HOME BASED SMALL BUSINESSES BY STATES AND TERRITORIES *continued*

	NOVEMBER 1999		JUNE 2001 . . .		Average annual rate of change
	Number of businesses	Proportion of businesses	Number of businesses	Proportion of businesses	
	'000	%	'000	%	
TASMANIA					
Total small businesses	12.6	100.0	14.4	100.0	9.0
Home based business					
Operated at home	5.0	39.8	5.8	40.0	9.4
Operated from home	11.5	91.8	13.9	96.6	12.5
Gender predominance					
Predominantly male	6.4	50.9	7.8	54.2	13.4
Predominantly female	2.8	22.5	2.7	18.9	-2.4
Equal male and female	3.3	26.6	3.9	26.9	9.8
Employer size group					
Non-employing businesses	9.5	75.6	11.0	76.5	9.8
1-4 employees	2.8	22.5	3.3	22.6	9.4
5-19 employees	*0.2	1.9	**0.1	0.9	-30.9
Age of business					
Less than 1 year	1.6	12.5	2.3	16.2	28.4
1 to less than 5 years	3.4	27.3	5.2	36.1	30.3
5 to less than 10 years	4.2	33.3	3.3	22.6	-14.7
10 or more years	3.4	26.9	3.6	25.1	4.2
Number of operators					
1 operator	9.0	72.0	10.1	70.1	7.2
2 operators	3.5	27.6	4.1	28.6	11.5
3 or more operators	**0.1	0.5	*0.2	1.3	106.1
Use of computers					
Has a computer	7.3	57.9	8.1	56.5	7.4
Does not have a computer	5.3	42.1	6.3	43.5	11.2
Internet use					
Has computer and access to the Internet	3.8	30.3	6.7	46.4	42.7
Internet used for					
Email	3.1	24.6	5.4	37.2	41.4
Research	3.0	24.0	5.3	36.8	43.1
Making or receiving payments	*0.7	5.8	1.9	12.9	80.7
Other	1.5	12.3	4.4	30.5	93.1

* estimate has a relative standard error of between 25% and 50% and should be used with caution

** estimate has a relative standard error greater than 50% and is considered too unreliable for general use

4.4**HOME BASED SMALL BUSINESSES BY STATES AND TERRITORIES** *continued*

	NOVEMBER 1999		JUNE 2001 . . .		Average annual rate of change	
	Number of businesses	Proportion of businesses	Number of businesses	Proportion of businesses		
	'000	%	'000	%		
.....						
NORTHERN TERRITORY (a)						
Total small businesses	5.0	100.0	4.9	100.0	-1.3	
Home based business						
Operated at home	1.7	33.8	*1.0	20.0	-29.0	
Operated from home	4.6	91.5	4.7	96.7	2.2	
Gender predominance						
Predominantly male	3.0	60.8	3.4	68.6	6.5	
Predominantly female	1.2	24.8	*0.4	8.5	-49.7	
Equal male and female	*0.7	14.3	*1.1	22.8	32.3	
Employer size group						
Non-employing businesses	3.0	59.0	2.9	59.9	-0.4	
1-4 employees	1.6	31.1	*2.0	40.1	15.8	
5-19 employees	*0.5	9.9	—	—	na	
Age of business						
Less than 1 year	*0.6	12.1	*0.7	14.0	8.2	
1 to less than 5 years	2.2	43.5	*2.0	40.0	-6.3	
5 to less than 10 years	*1.1	22.4	*1.5	31.1	21.4	
10 or more years	*1.1	22.0	*0.7	14.9	-23.0	
Number of operators						
1 operator	4.0	80.5	3.7	74.7	-5.9	
2 operators	*0.8	16.9	*1.2	25.3	27.4	
3 or more operators	**0.1	2.6	—	—	na	
Use of computers						
Has a computer	2.0	39.3	2.8	56.4	23.9	
Does not have a computer	3.0	60.7	2.1	43.6	-19.9	
Internet use						
Has computer and access to the Internet	1.4	28.3	2.4	48.3	38.2	
Internet used for						
Email	1.2	24.8	*1.5	30.7	12.9	
Research	1.3	25.9	*1.5	30.0	8.1	
Making or receiving payments	**0.2	4.6	*0.8	16.0	118.4	
Other	*0.9	18.7	*1.7	33.9	43.9	

* estimate has a relative standard error of between 25% and 50% and should be used with caution

** estimate has a relative standard error greater than 50% and is considered too unreliable for general use

4.4

HOME BASED SMALL BUSINESSES BY STATES AND TERRITORIES *continued*

	NOVEMBER 1999		JUNE 2001 . . .		Average annual rate of change	
	Number of businesses	Proportion of businesses	Number of businesses	Proportion of businesses		
	'000	%	'000	%		
.....						
AUSTRALIAN CAPITAL TERRITORY						
Total small businesses	9.1	100.0	14.6	100.0	34.7	
Home based business						
Operated at home	3.9	43.2	6.2	42.4	33.2	
Operated from home	9.0	98.7	14.2	97.0	33.2	
Gender predominance						
Predominantly male	3.7	40.1	8.9	61.0	75.5	
Predominantly female	2.9	31.4	3.4	23.0	10.8	
Equal male and female	2.6	28.5	2.3	16.0	-6.5	
Employer size group						
Non-employing businesses	5.2	57.4	9.5	65.2	46.0	
1-4 employees	3.2	35.5	4.7	31.9	25.7	
5-19 employees	*0.6	7.0	*0.4	2.9	-22.9	
Age of business						
Less than 1 year	*0.7	7.6	2.1	14.3	101.1	
1 to less than 5 years	4.8	53.0	6.4	43.7	19.3	
5 to less than 10 years	1.2	13.5	2.9	19.9	71.9	
10 or more years	2.4	25.9	3.2	22.1	21.7	
Number of operators						
1 operator	6.2	67.5	11.9	81.1	51.2	
2 operators	2.8	30.9	2.5	17.0	-7.6	
3 or more operators	**0.1	1.6	*0.3	1.9	52.6	
Use of computers						
Has a computer	6.9	75.3	10.9	74.8	34.1	
Does not have a computer	2.3	24.7	3.7	25.2	36.4	
Internet use						
Has computer and access to the Internet	4.6	50.1	9.5	64.9	58.5	
Internet used for						
Email	4.1	45.2	8.9	60.7	62.2	
Research	3.6	39.0	8.6	58.7	74.4	
Making or receiving payments	1.3	14.2	4.1	28.1	106.8	
Other	1.8	19.3	8.7	59.6	174.3	

* estimate has a relative standard error of between 25% and 50% and should be used with caution

** estimate has a relative standard error greater than 50% and is considered too unreliable for general use

EXPLANATORY NOTES

INTRODUCTION

1 The Characteristics of Small Business in Australia survey was conducted in June 2001 as a supplementary topic to the monthly Labour Force Survey. Similar surveys were conducted previously in respect of February 1995, February 1997 and November 1999.

2 The Labour Force Survey is designed to regularly collect specific data on demographic and labour force characteristics of the Australian population. In most months the of the year the ABS conducts supplementary surveys of particular aspects of the labour force or on other subjects.

DATA COLLECTION METHOD

3 The data were collected by trained interviewers over a two week period. When completing the Labour Force Survey, those people whose main job or second job was operating a small business with less than 20 employees were asked some additional questions relating to the operations of that business.

4 The supplementary survey asked small business operators to provide details on themselves as operators of small businesses, and on the operations of their particular business. If there was more than one operator of the same small business in a household, only one of the operators was asked to complete the questions relating to the operations of the business.

5 The above method enabled the estimation of two discrete populations:
(i) Small business operators and their characteristics.
(ii) Small businesses and their characteristics.

**COMPARISONS WITH
PREVIOUS CHARACTERISTIC
OF SMALL BUSINESS
SURVEYS**

6 Where possible, results from both the November 1999 and June 2001 surveys are presented with average annual change measures. Due to the length of time that has elapsed between the two most recent surveys (19 months) and because the snap-shots were taken at different times of the year (June compared to November) the changes in statistics may be difficult to interpret. To assist in this interpretation, average annual change statistics are present where appropriate.

7 Results from the February 1997 survey are also referenced in the commentary. Users should note that the November 1999 results presented in this edition incorporate revisions applied to previously published data. The main impact of these revisions was on tables relating to educational attainment (tables 2.2, 4.2 and 4.3), the number of hours worked by small business operators (table 2.3) and major uses of the Internet (table 3.5).

8 Users should take care in comparing results from the June 2001 survey with previous Characteristics of Small Business Surveys as ABS statistical series are being impacted to varying degrees by The New Tax System (TNTS), introduced in Australia from 1 July 2000. It is likely that TNTS may have impacted on the number of Small Businesses reported for the June 2001 collection, as operators previously not registered with the ATO as a business, complied with the new regulations.

9 It should also be noted that the monthly Labour Force Survey used a redesigned questionnaire for June 2001 containing additional data items and some definitional changes which may have impacted on the data. For example:

COMPARISONS WITH
PREVIOUS CHARACTERISTIC
OF SMALL BUSINESS
SURVEYS *continued*

- the separate identification of contractors and sub-contractors; and
- educational attainment now utilises the Australian Standard Classification of Education (ASCED).

10 The ASCED spans all sectors of the formal Australian education system; that is, School, Vocational Education and Training and Higher Education. From 2001 ASCED replaces a number of classifications used in administrative and statistical systems, including the ABSCQ. The ASCED comprises two classifications: Level of Education and Field of Education. See *Australian Standard Classification of Education (ASCED), 2001* (Cat. no. 1272.0).

11 *Information Paper: Implementing the Redesigned Labour Force Survey Questionnaire* (Cat. no. 6295.0) contains further information about the questionnaire changes.

SCOPE OF THE SURVEY

Business size

12 Only those businesses which employ less than 20 people and their operators are included in the survey results.

Industry

13 All businesses identified were classified according to the Australian and New Zealand Standard Industrial Classification (ANZSIC), a detailed description of which appears in *Australian and New Zealand Standard Industrial Classification 1993* (Cat. no. 1292.0).

14 The survey included businesses in the following industries:

Mining
Manufacturing
Construction
Wholesale trade
Retail trade
Accommodation, cafes and restaurants
Transport and storage
Communication services
Finance and insurance
Property and business services
Education
Health and community services
Cultural and recreational services
Personal and other services.

Geographical areas

15 The survey covered both rural and urban areas in all States and Territories, excluding some 175,000 persons living in remote and sparsely settled parts of Australia. The exclusion of these persons will have only a minor impact on any aggregate estimates that are produced for individual States or Territories, with the exception of the Northern Territory where such persons account for over 20% of the population.

Persons

16 The population for the survey includes all persons aged 15 or over except:

- diplomatic personnel of overseas governments;
- overseas residents temporarily in Australia;
- members of non-Australian defence forces and their dependants stationed in Australia;
- members of the permanent Australian defence forces;
- boarding school students; and
- people in institutions such as hospitals, sanatoria and inmates of jails, reformatories etc.

<i>Persons</i>	<i>continued</i>	17 While these categories of people have an effect on the measurement of labour force levels, their exclusion is not expected to have significant impact on the identification of small businesses.
SURVEY DESIGN		18 As the Characteristics of Small Business survey is a supplementary survey to the Labour Force Survey, it has the same basic design. The survey was based on a multi-stage area sample of private dwellings (about 30,000 houses and flats), and covered about one-half of one per cent of the population of Australia.
COVERAGE OF THE SURVEY		19 Coverage rules are applied which aim to ensure that each person is associated with only one dwelling, and hence has only one chance of selection. The chance of a person being enumerated at two separate dwellings in the one survey is considered to be negligible. 20 Persons who are away from their usual residence for six weeks or less at the time of the interview are enumerated at their usual residence.
PREVIOUS ESTIMATES		21 Where comparative data are available, this publication presents estimates from the November 1999 Characteristics of Small Business Survey. Data from the February 1997 Survey are also presented in the commentary in some sections.
RELIABILITY OF ESTIMATES		22 The estimates provided in this publication are subject to two types of error: sampling error and non-sampling error.
<i>Sampling error</i>		23 As the estimates in this publication are based on information obtained from occupants of a sample of dwellings they are subject to sampling variability, that is, the estimates may differ from those that would have been produced if all dwellings had been included in the survey. 24 One measure of the likely difference is given by the standard errors (SEs) (see Appendix tables A1.1 and A1.2), which indicate the extent to which an estimate might have varied by chance because only a sample of dwellings was included. There are about two chances in three (67%) that a sample estimate will vary by less than one SE from the estimate that would have been obtained if all dwellings had been included, and about nineteen chances in twenty (95%) that the difference will be less than two SEs. 25 Another measure of the sampling variability is the relative standard error (RSE), which is obtained by expressing the SE as a percentage of the estimate to which it refers. The RSE is a useful measure in that it provides an immediate indication of the percentage of error likely to have occurred due to sampling. 26 As the Appendix tables A1.1 and A1.2 of SEs show, the size of the SE increases with the size of the estimate. However, the smaller the estimate the higher the RSE. Thus, larger estimates will be relatively more reliable than smaller estimates. 27 Very small estimates are subject to large RSEs, so that their value for most practical purposes is unreliable. In the tables in this publication, only estimates with RSEs of 25% or less are considered reliable for most purposes. Estimates with RSEs greater than 25% but less than or equal to 50% are preceded by an asterisk (e.g. *3.4) to indicate they are subject to high SEs and should be used with caution. Estimates with RSEs of greater than 50%, preceded by a double asterisk (e.g. **0.3), are considered too unreliable for general use and should only be used to aggregate with other estimates to provide derived estimates with RSEs of 25% or less. 28 Space does not allow for separate indication of the standard errors of all estimates in this publication. As a guide, the Appendix provides an average

Sampling error continued

standard error applicable for estimates of the number of small business operators and the number of small businesses for any classification. Each SE Appendix table is derived from a mathematical model, referred to as the 'SE model', which is created using data from the survey. It should be noted that the SE model only gives an approximate value for the SE for any particular estimate, since there is some minor variation between SEs for different estimates of the same size.

29 If the actual value for a particular estimate is not shown in the Appendix table an approximate SE can be derived by taking the SEs shown for estimates on either side of the required value and interpolating a figure within that range.

CALCULATIONS OF STANDARD ERROR (SE)

30 An example of the calculation and the use of SEs in relation to estimates of the number of small business operators is as follows. The table 2.1 shows that the estimated number of male small business operators in New South Wales is 356,000. Since this estimate is between 300,000 and 400,000, Appendix table A1.1 shows that the SE for New South Wales will be between 12,200 and 14,300, and can be approximated by interpolation using the following general formula:

31 SE of estimate = lower SE + (((size of estimate - lower estimate) / (upper estimate - lower estimate))x(upper SE - lower SE))

32 = 12,200 + (((356,000 - 300,000) / (400,000 - 300,000)) x (14,300 - 12,200))

33 = 13,376

34 = 13,400 (rounded to the nearest 100)

35 Therefore, there are about two chances in three that the value that would have been produced if all dwellings had been included in the survey will fall in the range 342,600 to 369,400 and about 19 chances in 20 that the value will fall in the range 329,200 to 382,800.

36 Similarly, SEs are calculated for estimates of the number of small businesses using Appendix A1.2 instead of Appendix A1.1. For example, table 3.1 shows that the estimated total number of small businesses in Australia is 1,162,000. This estimate is between 1,000,000 and 2,000,000, so the SE for this estimate will be between 17,800 and 25,100, and can be approximated using the same interpolation formula as above, with the resulting SE being 19,000 (rounded to the nearest 100).

PROPORTIONS AND PERCENTAGES

37 Proportions and percentages formed from the ratio of two estimates are also subject to sampling errors. The size of the error depends on the accuracy of both the numerator and the denominator. A formula to approximate the RSE of a proportion is given below. This formula is only valid when x is a subset of y.

$$RSE(\frac{x}{y}) = \sqrt{[RSE(x)]^2 - [RSE(y)]^2}$$

38 For example, in table 2.1, the estimate for the total number of small business operators in NSW is 515,200. The estimated number of male small business operators in NSW is 356,000, so the proportion of small business operators in NSW who are male is 356,000/515,200 or 69.1%. The SE of the total number of small business operators in NSW may be calculated by interpolation as 16,300. To convert this to a RSE we express the SE as a percentage of the estimate, or 16,300/515,200 = 3.2%. The SE for the number of male small business operators in NSW was calculated above as 13,300, which converted to a

Sampling error continued

RSE is $13,300/356,000 = 3.7\%$. Applying the above formula, the RSE of the proportion is

$$RSE = \sqrt{(3.7)^2 - (3.2)^2} = 1.9\%$$

39 giving a SE for the proportion (69.1%) of 1.3 percentage points ($= (69.1/100) \times 1.9$).

40 Therefore, there are about two chances in three that the proportion of small business operators in NSW who are male is between 67.8% and 70.4% and 19 chances in 20 that the proportion is within the range 66.5% to 71.7%.

41 Similarly, SEs can be calculated for estimates of the number of small businesses using the same formula.

DIFFERENCES

42 Published estimates may also be used to calculate the difference between two survey estimates (of numbers or percentages). Such an estimate is subject to sampling error. The sampling error of the difference between two estimates depends on their SEs and the relationship (correlation) between them. An approximate SE of the difference between two estimates ($x-y$) may be calculated by the following formula:

$$SE(x-y) = \sqrt{[SE(x)]^2 + [SE(y)]^2}$$

43 While this formula will only be exact for differences between separate and uncorrelated characteristics or sub-populations, it is expected to provide a good approximation for all differences likely to be of interest in this publication.

Non-sampling errors

44 The imprecision due to sampling variability, which is measured by the SE, should not be confused with inaccuracies that may occur due to non-sampling errors.

45 Non-sampling errors can occur whether the estimates are derived from a sample or from a complete enumeration. Three major sources of non-sampling error are:

- inability to obtain comprehensive data from all people included in the sample. These errors arise because of differences which exist between the characteristics of respondents and non-respondents;
- errors in reporting on the part of both respondents and interviewers. These reporting errors may arise through inappropriate wording of questions, misunderstanding of what data are required, inability or unwillingness to provide accurate information and mistakes in answers to questions; and
- errors arising during processing of the survey data. These processing errors may arise through mistakes in coding and data recording.

46 Non-sampling errors are difficult to measure in any collection. However, every effort was made to minimise these errors. In particular, the effect of the reporting and processing errors described above was minimised by careful questionnaire design, intensive training and supervision of interviewers, asking respondents to refer to records whenever possible and extensive editing and quality control checking at all stages of data processing.

47 Estimates derived from the survey are obtained by using a calibrated weighting procedure which ensures that the survey estimates conform to an

SURVEY ESTIMATION AND
WEIGHTING PROCEDURES*continued*

independently estimated distribution of the population by area of residence, age and sex.

48 Two separate weights were used for the survey:

- a person weight used in the estimation of small business operators; and
- a business weight used in the estimation of small businesses.

49 Each person in the sample is assigned a 'weight' which takes into account their probability of selection in the sample from their region, with adjustments to account for under-enumeration (for example, non-response) at the age and sex level.

50 The 'weights' are also adjusted to reduce the bias introduced by varying levels of non- response in different sub-groups of the population.

51 Business weights are derived from the person weights using partner per business information.

APPENDIX

STANDARD ERROR TABLES

A1.1 STANDARD ERRORS FOR NUMBER OF SMALL BUSINESS OPERATOR ESTIMATES

AUST.

<i>Size of estimate ('000)</i>	<i>NSW</i>	<i>Vic.</i>	<i>Qld</i>	<i>SA</i>	<i>WA</i>	<i>Tas.</i>	<i>NT</i>	<i>ACT</i>	<i>Standard error</i>	<i>Relative standard error</i>
	'000	'000	'000	'000	'000	'000	'000	'000	'000	%
0.1	0.4	0.3	0.2	0.2	0.3	0.1	0.2	0.1	0.2	185.7
0.2	0.5	0.4	0.3	0.2	0.3	0.2	0.2	0.2	0.3	131.8
0.3	0.5	0.4	0.3	0.3	0.3	0.2	0.2	0.2	0.3	107.8
0.4	0.6	0.5	0.4	0.3	0.4	0.2	0.3	0.2	0.4	93.4
0.5	0.7	0.5	0.4	0.3	0.4	0.2	0.3	0.3	0.4	83.6
0.6	0.7	0.5	0.5	0.4	0.4	0.3	0.3	0.3	0.5	76.3
0.7	0.8	0.6	0.5	0.4	0.5	0.3	0.3	0.3	0.5	70.7
0.8	0.8	0.6	0.5	0.4	0.5	0.3	0.3	0.3	0.5	66.1
0.9	0.8	0.6	0.6	0.4	0.5	0.3	0.4	0.3	0.6	62.3
1.0	0.9	0.7	0.6	0.5	0.5	0.3	0.4	0.3	0.6	59.1
1.1	0.9	0.7	0.6	0.5	0.5	0.4	0.4	0.4	0.6	56.4
1.2	0.9	0.7	0.6	0.5	0.6	0.4	0.4	0.4	0.7	54.0
1.3	1.0	0.7	0.7	0.5	0.6	0.4	0.4	0.4	0.7	51.8
1.4	1.0	0.8	0.7	0.5	0.6	0.4	0.4	0.4	0.7	49.9
1.5	1.0	0.8	0.7	0.6	0.6	0.4	0.4	0.4	0.7	48.2
1.6	1.0	0.8	0.7	0.6	0.6	0.4	0.5	0.4	0.8	46.7
1.7	1.1	0.8	0.8	0.6	0.6	0.4	0.5	0.4	0.8	45.3
1.8	1.1	0.9	0.8	0.6	0.7	0.4	0.5	0.4	0.8	44.0
1.9	1.1	0.9	0.8	0.6	0.7	0.5	0.5	0.5	0.8	42.8
2.0	1.1	0.9	0.8	0.6	0.7	0.5	0.5	0.5	0.8	41.7
2.1	1.2	0.9	0.8	0.6	0.7	0.5	0.5	0.5	0.9	40.7
2.2	1.2	0.9	0.8	0.7	0.7	0.5	0.5	0.5	0.9	39.8
2.3	1.2	1.0	0.9	0.7	0.7	0.5	0.6	0.5	0.9	38.9
2.4	1.2	1.0	0.9	0.7	0.7	0.5	0.6	0.5	0.9	38.1
2.5	1.3	1.0	0.9	0.7	0.7	0.5	0.6	0.5	0.9	37.3
3.0	1.4	1.1	1.0	0.8	0.8	0.6	0.6	0.6	1.0	34.0
3.5	1.4	1.1	1.1	0.8	0.9	0.6	0.7	0.6	1.1	31.5
4.0	1.5	1.2	1.1	0.9	0.9	0.6	0.7	0.6	1.2	29.4
4.5	1.6	1.3	1.2	0.9	1.0	0.7	0.8	0.7	1.3	27.7
5.0	1.7	1.4	1.3	1.0	1.0	0.7	0.9	0.7	1.3	26.3
6.0	1.8	1.5	1.4	1.1	1.1	0.8	1.0	0.8	1.5	24.0
8.0	2.1	1.7	1.6	1.3	1.3	0.9	1.1	0.9	1.7	20.7
10.0	2.3	1.9	1.8	1.5	1.5	1.0	1.3	1.0	1.9	18.5
20.0	3.2	2.6	2.4	2.2	2.1	1.3	2.1	1.4	2.6	13.0
30.0	3.8	3.2	2.9	2.8	2.7	1.5	2.8	1.7	3.2	10.5
40.0	4.4	3.7	3.3	3.3	3.2	1.7	3.5	1.9	3.7	9.1
50.0	4.9	4.1	3.7	3.8	3.6	1.9	4.2	2.2	4.1	8.1
100.0	6.9	5.9	5.0	5.9	5.7	2.5	7.5	3.1	5.7	5.7
200.0	9.9	8.5	6.7	9.5	9.1	3.4	13.9	4.4	7.9	4.0
300.0	12.2	10.6	8.0	12.7	12.1	3.9	20.3	5.4	9.6	3.2
400.0	14.3	12.4	9.1	15.7	15.0	4.4	26.9	6.3	11.1	2.8
500.0	16.1	14.1	10.0	18.5	17.7	4.8	33.7	7.2	12.3	2.5
1000.0	23.7	20.9	13.3	31.5	30.4	6.3	69.6	10.5	17.1	1.7
2000.0	35.2	31.4	17.8	54.8	53.7	8.2	150.1	15.4	23.7	1.2
5000.0	60.7	54.6	25.7	118.2	119.3	11.4	444.2	26.1	36.5	0.7
10000.0	92.9	84.3	33.9	217.3	225.8	14.7	1 063.0	39.3	50.4	0.5
20000.0	143.8	131.5	44.4	409.1	439.8	18.7	2 659.4	59.5	69.6	0.3

A1.2 STANDARD ERRORS FOR NUMBER OF SMALL BUSINESS ESTIMATES

AUST.

Size of estimate ('000)	NSW	Vic.	Qld	SA	WA	Tas.	NT	ACT	Standard error	Relative standard error
	'000	'000	'000	'000	'000	'000	'000	'000	'000	%
0.1	0.1	0.1	0.1	0.1	0.1	0.1	0.1	0.1	0.1	74.0
0.2	0.2	0.1	0.1	0.1	0.2	0.1	0.1	0.1	0.1	59.3
0.3	0.2	0.2	0.1	0.2	0.2	0.1	0.1	0.1	0.2	51.8
0.4	0.3	0.2	0.2	0.2	0.2	0.2	0.2	0.2	0.2	47.0
0.5	0.3	0.2	0.2	0.2	0.3	0.2	0.2	0.2	0.2	43.5
0.6	0.4	0.3	0.2	0.3	0.3	0.2	0.2	0.2	0.3	40.8
0.7	0.4	0.3	0.3	0.3	0.3	0.2	0.3	0.2	0.3	38.7
0.8	0.4	0.3	0.3	0.3	0.4	0.3	0.3	0.3	0.3	36.9
0.9	0.5	0.4	0.3	0.3	0.4	0.3	0.3	0.3	0.3	35.4
1.0	0.5	0.4	0.3	0.3	0.4	0.3	0.3	0.3	0.3	34.1
1.1	0.5	0.4	0.4	0.4	0.4	0.3	0.4	0.3	0.4	32.9
1.2	0.6	0.4	0.4	0.4	0.4	0.3	0.4	0.3	0.4	31.9
1.3	0.6	0.5	0.4	0.4	0.5	0.4	0.4	0.4	0.4	31.0
1.4	0.6	0.5	0.4	0.4	0.5	0.4	0.4	0.4	0.4	30.2
1.5	0.6	0.5	0.5	0.4	0.5	0.4	0.4	0.4	0.4	29.4
1.6	0.7	0.5	0.5	0.4	0.5	0.4	0.4	0.4	0.5	28.7
1.7	0.7	0.5	0.5	0.5	0.6	0.4	0.5	0.4	0.5	28.1
1.8	0.7	0.6	0.5	0.5	0.6	0.4	0.5	0.4	0.5	27.5
1.9	0.7	0.6	0.5	0.5	0.6	0.4	0.5	0.4	0.5	27.0
2.0	0.8	0.6	0.6	0.5	0.6	0.5	0.5	0.4	0.5	26.4
2.1	0.8	0.6	0.6	0.5	0.6	0.5	0.5	0.5	0.6	26.0
2.2	0.8	0.6	0.6	0.5	0.6	0.5	0.5	0.5	0.6	25.5
2.3	0.8	0.7	0.6	0.5	0.7	0.5	0.5	0.5	0.6	25.1
2.4	0.9	0.7	0.6	0.6	0.7	0.5	0.6	0.5	0.6	24.7
2.5	0.9	0.7	0.7	0.6	0.7	0.5	0.6	0.5	0.6	24.3
3.0	1.0	0.8	0.7	0.6	0.8	0.6	0.6	0.5	0.7	22.7
3.5	1.1	0.9	0.8	0.7	0.8	0.6	0.7	0.6	0.8	21.4
4.0	1.1	0.9	0.9	0.7	0.9	0.6	0.7	0.6	0.8	20.3
4.5	1.2	1.0	1.0	0.8	1.0	0.7	0.7	0.7	0.9	19.4
5.0	1.3	1.1	1.0	0.9	1.0	0.7	0.8	0.7	1.0	18.6
6.0	1.5	1.2	1.2	1.0	1.2	0.8	0.8	0.8	1.1	17.3
8.0	1.7	1.4	1.4	1.1	1.3	0.9	0.9	0.9	1.3	15.5
10.0	2.0	1.6	1.5	1.3	1.5	1.0	1.0	0.9	1.4	14.1
20.0	2.9	2.4	2.2	1.8	2.2	1.3	1.2	1.2	2.2	10.6
30.0	3.5	3.0	2.7	2.3	2.7	1.4	1.2	1.3	2.7	9.0
40.0	4.1	3.5	3.1	2.7	3.2	1.5	1.2	1.4	3.2	7.9
50.0	4.6	4.0	3.4	3.0	3.6	1.6	1.3	1.5	3.6	7.2
100.0	6.6	5.6	4.5	4.5	5.1	1.8	1.2	1.7	5.3	5.3
200.0	9.3	7.8	5.7	6.5	7.2	2.0	1.1	1.8	7.7	3.8
300.0	11.3	9.4	6.4	8.2	8.8	2.1	1.0	1.8	9.6	3.2
400.0	12.9	10.6	7.0	9.6	10.1	2.1	0.9	1.8	11.1	2.8
500.0	14.3	11.7	7.4	10.8	11.2	2.1	0.8	1.9	12.5	2.5
1000.0	19.6	15.4	8.6	15.9	15.5	2.0	0.6	1.8	17.8	1.8
2000.0	26.6	20.0	9.7	23.2	21.3	1.9	0.4	1.7	25.1	1.3
5000.0	39.1	27.2	10.7	38.4	31.9	1.6	0.3	1.4	39.0	0.8
10000.0	51.5	33.6	11.0	56.1	42.8	1.3	0.2	1.2	53.9	0.5
20000.0	67.2	40.6	10.9	81.9	56.9	1.1	0.1	1.0	73.7	0.4

GLOSSARY

Business operator(s)	<p>There is no standard definition of a small business operator and other ABS publications do not use the term, or provide statistics about small business operators as a group. However, the expression "small business operator" is one that is often used in research and policy debate and is generally taken to include the following group of people:</p> <p>The person or persons who own and run the business. Generally these business operators can be identified as:</p> <ul style="list-style-type: none"> ■ the proprietor of a sole proprietorship; ■ the partners of a partnership; or ■ the working director(s) of an incorporated company.
Computer	Includes personal computers (PCs), laptops, note books, mainframes and mini-computers.
Email	Electronic mail is a facility which allows network users locally and worldwide to exchange messages, including text and attachments.
Full-time (work)	Employed persons who usually worked 35 hours or more a week (in all jobs) and those who, although usually working less than 35 hours a week, worked 35 hours or more during the reference week.
Home based businesses	<p>Where the person(s) usually conducts work at their residential address. Refer also to Chapter 4 — Introduction, for additional clarification.</p> <ul style="list-style-type: none"> ■ Operated at home — where most of the work of the business was carried out at the home(s) of the operator(s). ■ Operated from home — where the business had no other premises owned or rented other than the home(s) of the operator(s).
Internet	A world-wide collection of computers which are linked together using a particular communications protocol to form a repository of stored information and to provide a range of communication services. These services include, but are not limited to, the World Wide Web (WWW), Internet EDI and Simple Mail Transport Protocol (SMTP).
Internet business	<p>The use of the Internet, including the Web, to facilitate business processes. Included is the use of the Internet or a Web site for activities associated with buying or selling goods or services, banking, recruitment or company promotion. A business may use the Internet for only one or any number of purposes to be defined as participating in Internet business.</p>
Non-school qualification	<p>Non-school qualifications are awarded for educational attainments other than those of pre-primary, primary or secondary education. They include qualifications at the Post Graduate Degree Level, Master Degree Level, Graduate Diploma and Graduate Certificate Level, Bachelor Degree Level, Advanced Diploma and Diploma Level, and Certificates I, II, III and IV levels. Non-school qualifications may be attained concurrently with school qualifications. For more information please refer to the <i>Australian Standard Classification of Education (ASCED), 2001</i> (Cat. no. 1272.0)</p>
Part-time (work)	Employed persons who usually worked less than 35 hours a week (in all jobs) and either did so during the reference week, or were not at work in the reference week.

Small business Small businesses (excluding agricultural businesses) are those businesses employing less than 20 people. The categories presented in this publication are as follows:

- non-employing businesses — sole proprietors and partnerships without employees;
- businesses with 1–4 employees; and
- businesses with 5–19 employees.

Together, these three groups form the small business category — those businesses employing less than 20 people.

Note that because operators of all incorporated businesses are considered employees of that corporation, all incorporated businesses will be classified as employing businesses.

FOR MORE INFORMATION...

<i>INTERNET</i>	www.abs.gov.au the ABS web site is the best place to start for access to summary data from our latest publications, information about the ABS, advice about upcoming releases, our catalogue, and Australia Now—a statistical profile.
<i>LIBRARY</i>	A range of ABS publications is available from public and tertiary libraries Australia-wide. Contact your nearest library to determine whether it has the ABS statistics you require, or visit our web site for a list of libraries.
<i>CPI INFOLINE</i>	For current and historical Consumer Price Index data, call 1902 981 074 (call cost 77c per minute).
<i>DIAL-A-STATISTIC</i>	For the latest figures for National Accounts, Balance of Payments, Labour Force, Average Weekly Earnings, Estimated Resident Population and the Consumer Price Index call 1900 986 400 (call cost 77c per minute).

INFORMATION SERVICE

Data which have been published and can be provided within five minutes are free of charge. Our information consultants can also help you to access the full range of ABS information—ABS user-pays services can be tailored to your needs, time frame and budget. Publications may be purchased. Specialists are on hand to help you with analytical or methodological advice.

<i>PHONE</i>	1300 135 070
<i>EMAIL</i>	client.services@abs.gov.au
<i>FAX</i>	1300 135 211
<i>POST</i>	Client Services, ABS, GPO Box 796, Sydney 1041

WHY NOT SUBSCRIBE?

ABS subscription services provide regular, convenient and prompt deliveries of ABS publications and products as they are released. Email delivery of monthly and quarterly publications is available.

<i>PHONE</i>	1300 366 323
<i>EMAIL</i>	subscriptions@abs.gov.au
<i>FAX</i>	03 9615 7848
<i>POST</i>	Subscription Services, ABS, GPO Box 2796Y, Melbourne 3001



2812700001014
ISSN 1327-3949

RRP \$32.00