

LABOUR FORCE CHARACTERISTICS OF ABORIGINAL AND TORRES STRAIT ISLANDER AUSTRALIANS

AUSTRALIA

ESTIMATES FROM THE LABOUR FORCE SURVEY

EMBARGO: 11.30AM (CANBERRA TIME) THURS 3 JUN 2010

C O N T E N T S

	<i>page</i>
Notes	2
Introduction	3
 INDIGENOUS LABOUR FORCE ESTIMATES	
Methodology	4
Concepts	6
Reliability of estimates	7
 SUMMARY OF FINDINGS	
Participation	8
Employment	9
Unemployment	10
 TABLES	
List of tables	11
Indigenous persons aged 15 years and over	12
Indigenous persons aged 15 to 64 years	19
Proportions	21
 ADDITIONAL INFORMATION	
Explanatory notes	22
Appendix 1: Other sources of information	26
Appendix 2: Comparisons with non-Indigenous estimates	30
Appendix 3: Technical note	41
Appendix 4: Standard errors	44
Appendix 5: Movement standard errors	54
Glossary	62

I N Q U I R I E S

For further information
about these and related
statistics, contact the
National Information and
Referral Service on
1300 135 070 or
Scott Marley on Canberra
(02) 6252 6525.

ABOUT THIS PUBLICATION

This publication presents information about the labour force characteristics of Aboriginal and Torres Strait Islander Australians. Information on labour force characteristics is presented by state or territory, remoteness, males and females, and age.

The estimates in this publication were compiled from the monthly Labour Force Survey, conducted throughout Australia by the Australian Bureau of Statistics (ABS). Results from each monthly collection have been combined to produce annual estimates.

Previously published estimates released in earlier editions of *Labour Force Characteristics of Aboriginal and Torres Strait Islander Australians* (cat. no. 6287.0), are not strictly comparable with the estimates in this release due to:

- rebenchmarking of estimates from 2005 to 2007 to be based on the population estimates released in *Experimental Estimates and Projections, Aboriginal and Torres Strait Islander Australians, 1991 to 2021* (cat. no. 3238.0); and
- changes in methodology for estimates published for 1994–2000.

The Labour Force Survey has methodological and definitional differences when compared with other sources of Indigenous Labour Force data, such as the five-yearly Census of Population and Housing, the 2008 National Aboriginal and Torres Strait Islander Social Survey (NATSISS), and the 2004–05 National Aboriginal and Torres Strait Islander Health Survey (NATSIHS). The differences in the methodologies used affect the comparability of the estimates. These are discussed in Appendix 1: Other sources of information.

ROUNDING

As estimates have been rounded, discrepancies may occur between sums of the component items and totals.

.....

ABBREVIATIONS

ABS	Australian Bureau of Statistics
CDEP	Community Development Employment Projects
ERP	estimated resident population
LFS	Labour Force Survey
NATSIHS	National Aboriginal and Torres Strait Islander Health Survey
NATSISS	National Aboriginal and Torres Strait Islander Social Survey
pts	percentage points
RSE	relative standard error
SE	standard error

Brian Pink
Australian Statistician

INTRODUCTION

INTRODUCTION

This publication presents information about the labour force characteristics of Aboriginal and Torres Strait Islander Australians aged 15 years and over. The information is based on data collected by the Australian Bureau of Statistics (ABS) in its monthly Labour Force Survey (LFS) during 2008 and 2009. Revised data for 2005 to 2007 are also included in this publication for comparison purposes.

The monthly LFS is the main source of information about the labour force status of Australia's civilian population. The labour force estimates for Aboriginal and Torres Strait Islanders in this publication were produced by combining the LFS samples for each of the 12 months of a calendar year to produce annual estimates. Information on the methodology used to produce the estimates is included in the Indigenous Labour Force Estimates section of this publication.

To help in the interpretation of these estimates, this publication also draws attention to a number of statistical issues that need to be considered when using LFS estimates to describe Indigenous labour force characteristics. These have an impact on the relevance, quality and reliability of Indigenous estimates from the LFS.

Some of these statistical issues arise because the LFS is designed primarily to provide reliable estimates of key labour force aggregates for the whole of Australia and, secondarily, for each state and territory, rather than estimates for small populations or small geographic areas. The small number of the Indigenous population and its wide dispersion, together with the relatively high proportion who live in remote areas present particular difficulties in producing reliable labour force estimates for the Indigenous population. There are also some practical difficulties with applying the standard LFS concepts and definitions and using the standard LFS survey questions in Indigenous communities, particularly in remote regions. In addition, the small sample of Indigenous Australians identified in the LFS, even when aggregated across the year, has implications for the reliability of the survey estimates.

Additional information on the labour force status of Indigenous Australians is also available from a number of other ABS data collections, including the five-yearly Census of Population and Housing, the National Aboriginal and Torres Strait Islander Social Survey (NATSISS), and the National Aboriginal and Torres Strait Islander Health Survey (NATSIHS). Although the labour force statistics from these data sources are based on the same underlying concepts as the LFS, there are differences in the methodologies used which affect the comparability of the data. Broad estimates from these sources, and the methodological and definitional differences, are presented later in this publication.

INDIGENOUS LABOUR FORCE ESTIMATES

METHODOLOGY

Information about the labour force characteristics of the Aboriginal and Torres Strait Islander population has been collected in the LFS using international standards for defining and measuring employment and unemployment. The distinction between paid and unpaid work is fundamental to these definitions. As a result, the definitions may not always give adequate recognition to the 'unpaid' activities which some people undertake. However, the use of standard definitions across all population groups is seen as important for ensuring objectivity and uniformity in measuring Australia's labour force. This section provides information on issues specific to Indigenous estimates from the LFS. Information on the methodology and concepts used in the LFS more generally are presented in the Explanatory Notes section with additional detail published in *Labour Statistics: Concepts Sources and Methods* (cat. no. 6102.0.55.001).

Questionnaire

In the LFS, information is generally collected by specially trained interviewers using a standard LFS questionnaire, from people in dwellings selected in the LFS. The questionnaire used in the survey is published in *Information Paper: Questionnaires used in the Labour Force Survey* (cat. no. 6232.0).

Special procedures are used to collect information in some Indigenous communities in remote areas to minimise respondent load and achieve maximum cooperation and response rates. In particular, a 'short form', which collects the minimum data required to derive basic labour force characteristics, is available for use when interviewers encounter significant cultural, language or operational difficulties in remote areas.

From April 2001, the monthly LFS has included a question on Indigenous status. This has enabled information on the Indigenous status of respondents to be collected for each month of the survey, increasing the amount of information available on Indigenous people from the LFS.

The question asked to determine Indigenous status is:

- Is ... of Aboriginal origin, Torres Strait Islander origin or both?

Although the question on Indigenous origin allows people to identify as being of Aboriginal origin only, Torres Strait Islander origin only, or as both Aboriginal and Torres Strait Islander origin, it is not feasible to derive separate labour force statistics for these three groups because of the small numbers of Indigenous people in the LFS sample.

Sample size

For 2008 and 2009, the LFS had a monthly sample ranging from 41,000 to 61,000 people aged 15 years and over, in urban, rural and remote areas across all states and territories of Australia. This sample range is due to a 24% sample cut that was introduced in June 2008, and was later reinstated between September and December 2009. Further information about the sample cut and reinstatement can be found in *Information Paper: Labour Force Survey Sample Design* (cat. no. 6269.0).

The LFS sample size is sufficient to provide reliable monthly estimates of level and change in the major labour force characteristics of the total population for Australia and for each state and territory. However, the survey sample is not specifically designed to provide monthly estimates for small population groups, such as the Indigenous population, or for small geographic areas.

Sample size continued

The methodology used to produce the labour force estimates for Indigenous Australians is based on combining the LFS samples for each of the twelve months of the year. This pooling has resulted in a sample of between 10,500 and 13,500 records each year. This sample size is adequate for providing broad aggregates of labour force characteristics at the state and territory level. However, the sample size per year is still quite small, resulting in constraints on the level of disaggregated data available from the survey. Note that as the sample is pooled from monthly data throughout the year, and most people are interviewed for the LFS in more than one month (up to eight consecutive months), the number of individuals interviewed each year (approx. 3,700 in 2008 and 3,100 in 2009) is substantially lower than the sample used to produce the estimates (12,800 in 2008 and 10,500 in 2009).

Sample design

In remote areas of Australia, the LFS sample is more clustered than in non-remote areas, so that the majority of the survey's sample of Indigenous people living in remote areas tends to be concentrated in a relatively small number of clusters. This has significant implications for estimates for Indigenous people in remote areas. There is a high degree of variability in employment opportunities between Indigenous communities, while employment opportunities for people within a particular Indigenous community are likely to be similar. Due to the small number of Indigenous communities selected in the LFS, there is the potential for wide statistical fluctuations in estimates of labour force characteristics of remote Indigenous communities over time if the sample moves from communities with strong employment opportunities to those which do not (and vice versa).

Estimation

As part of the estimation process, the LFS estimates of Indigenous persons employed, unemployed and not in the labour force are calculated in such a way as to add to independent estimates of the size and structure of the Indigenous population. Independent population estimates (benchmarks) for the Indigenous population aged 15 years and over by sex, broad age groups and remoteness type, for each state and territory of Australia, as at 30 June, were used for each year of estimates. These benchmarks reflect the low series population projections based on the 2006 Census as published in *Experimental Estimates and Projections, Aboriginal and Torres Strait Islander Australians, 1991 to 2021* (cat. no. 3238.0). These projections are not predictions or forecasts, but are projections of Census data reflecting the growth in population which would occur if certain assumptions about future levels of fertility, mortality, migration and unexplained growth were to prevail over the projection period. Where data in this publication are presented by geographic area (such as remoteness, or state or territory), the data are based on a respondent's place of enumeration.

CONCEPTS

Standard LFS definitions and concepts are presented in the Explanatory Notes. However, there are some issues specific to Indigenous labour force estimates which are discussed here.

Employment

In the LFS, employment is defined as working for at least one hour, either for pay or profit, or as unpaid work in a family business; or being absent from work but remaining formally attached to a job. Persons who participate in labour market programs are counted as employed, unemployed or not in the labour force according to how they respond to questions in the LFS about their actual activity in the week before interview.

The Community Development Employment Projects (CDEP) scheme is a program provided by the Federal Government for (primarily) Aboriginal and Torres Strait Islander people living in remote, rural and urban areas. It enables an Indigenous community or organisation to pool the unemployment benefit entitlements of individuals into direct wages for those people who choose to participate in local employment in various community development or organisation programs as an alternative to receiving individual income support payments.

Prior to July 2009, the relationship between CDEP organisations and the individual participants who were undertaking paid work was treated by ABS as an employer/employee relationship. The individual participants were considered to be in paid employment, even though they were paid for their work from funds originating from unemployment benefits.

From July 2009 onwards, the CDEP scheme was discontinued in non-remote locations where the economy is well established. Individuals in these communities who were formerly paid wages under CDEP and are now instead receiving alternative income support benefits are no longer considered to be employed, unless they have undertaken another form of paid employment. In remote communities, CDEP will continue to operate until June 2011, but new participants to the scheme will receive income support benefits instead of CDEP wages. Participants who joined prior to July 2009 and are still receiving CDEP wages will continue to be classified as employed, but new participants are not considered to be in an employer/employee relationship and will not be classed as employed by their CDEP participation.

Unemployment

The definition of unemployment is based around the concepts of actively looking for work and being available to start work. Where job opportunities are scarce or may not exist, such as in some remote parts of Australia, there may be little incentive to actively look for work. As a result, there may be relatively little unemployment measured in such regions, with the population who are not employed falling mainly into the 'not in the labour force' category.

RELIABILITY OF ESTIMATES

When reading the following summary of findings, or using the data presented in the tables section, it is important to consider the relative strengths and weaknesses of the LFS as a data source for Indigenous labour force information. It is also important to remember that all LFS estimates are subject to sampling errors. This is particularly relevant to these Indigenous estimates because of the small size of the Indigenous population and the small number of Indigenous persons in the LFS sample. These estimates are also subject to non-sampling errors due to particular collection difficulties in remote areas, in addition to imperfections in reporting, recording or processing of data that can occur in any survey or census. It is also important to note that the population benchmarks used for compiling Indigenous labour force estimates are not predictions or forecasts, but are projections of 2006 Census data reflecting the growth in population which would occur if certain assumptions about future levels of fertility, mortality, migration and unexplained growth were to prevail over the projection period.

Further information about the reliability of estimates based on a sample survey is provided in Appendix 3: Technical note. However, in general terms, very small estimates are subject to high sampling errors (relative to the size of the estimate). Estimates with a relative standard error (RSE) of 25% or greater would not be suitable for most practical purposes. These estimates are indicated by an asterisk (*) in the tables presented in this publication. The actual standard errors for level estimates are provided in Appendix 4: Standard errors (Tables L1 to L5).

Comparisons over time of Indigenous labour force characteristics should be interpreted with particular caution. It is important to take into account the high standard errors associated with annual movements. For example, the estimated number of Indigenous people employed decreased from 163,200 in 2008 to 161,200 in 2009. However, the standard error on this movement (8,900) means that this decrease is not statistically significant. The standard errors of the year to year movements are provided in Appendix 5: Movement standard errors (Tables M1 to M5).

SUMMARY OF FINDINGS

PARTICIPATION

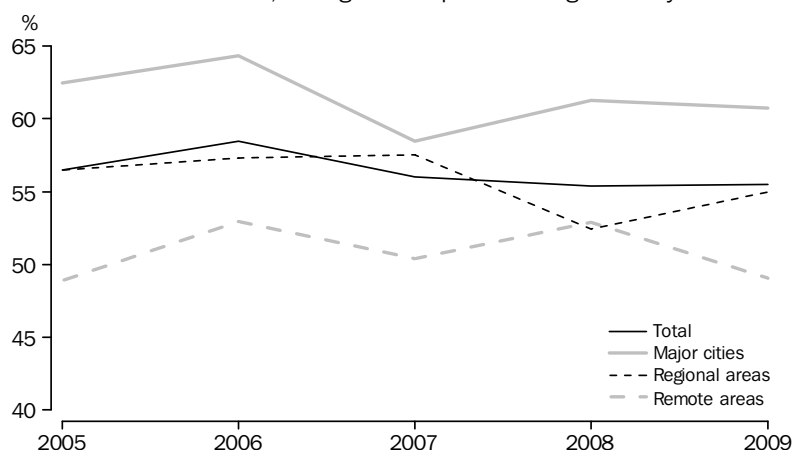
In 2009, an estimated 196,500 Indigenous people were in the labour force (i.e. either employed or unemployed). This represented a labour force participation rate for all Indigenous people aged 15 years and over of 56%.

Of the Indigenous people in the labour force, more lived in Regional areas (88,500 people) than in Major Cities (69,700) or Remote areas (38,400). Both Major Cities and Regional Areas had the highest participation rate at 61% and 55% respectively in 2009.

Males accounted for 55% of the Indigenous labour force in 2009. The labour force participation rate for Indigenous males (63%) was considerably higher than for Indigenous females (49%). In Remote areas, Indigenous male participation has decreased since 2006 while female participation has generally increased. By 2009, the labour force participation rates for Indigenous males in Remote areas was no longer considerably higher than females (50% and 48% respectively).

The participation rate for Indigenous people aged 15-64 years in 2009 (58%) was slightly higher than the rate for all Indigenous people aged 15 years and over (56%). Indigenous persons aged 65 years and over accounted for 5% of the total Indigenous population aged 15 years and over in 2009. For more information see Appendix 2: Comparisons with non-Indigenous estimates.

PARTICIPATION RATE, Indigenous persons aged 15 years and over



Between 2005 and 2009, the Indigenous population not in the labour force has generally increased from 135,900 to 157,400. In 2009, more Indigenous people not in the labour force lived in Regional areas (72,500) than in Major cities (45,000) and Remote areas (39,800). Females accounted for 59% of the total Indigenous population not in the labour force.

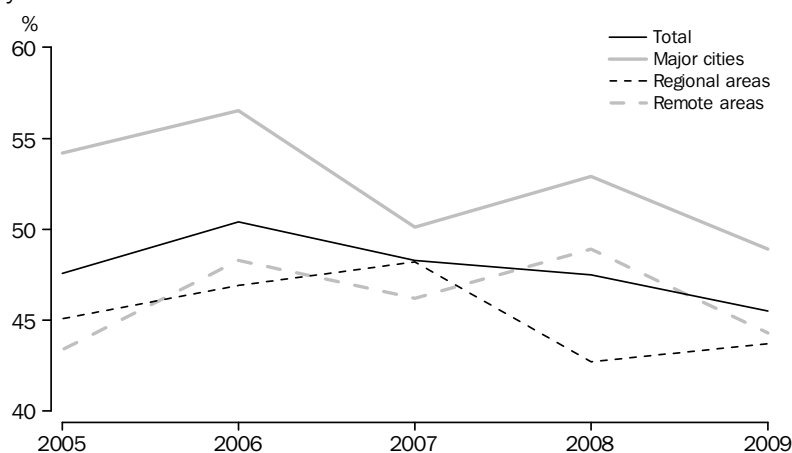
SUMMARY OF FINDINGS *continued*

EMPLOYMENT

In 2009, there were an estimated 161,200 Indigenous people aged 15 years and over in employment. This represented 46% of the Indigenous population aged 15 years and over. The employment to population ratio for Indigenous males (51%) has fallen since a peak estimate of 57% in 2006. The employment to population ratio for Indigenous females fell from a high estimate of 44% in 2006 to 41% in 2007, and remained relatively steady, estimated at 40% in 2009.

In 2009, there were an estimated 56,100 Indigenous people employed in Major Cities, 70,400 employed in Regional areas and 34,700 employed in Remote areas. The employment to population ratio was 49% in Major Cities, and 44% in Regional areas and Remote areas. The employment to population ratio of Indigenous males in Remote areas decreased 11 percentage points between 2006 and 2009, with a 6 point drop between 2008 and 2009. The employment to population ratio for Indigenous females in Remote areas also decreased from 47% in 2008 to 43% in 2009, although this drop is within the standard movement errors and should not be considered significant. Indigenous people participating in the CDEP scheme, who were classified by the ABS as employed, are likely to form a significant proportion of Indigenous employment in remote areas (see *National Aboriginal and Torres Strait Islander Social Survey* (cat. no. 4714.0)).

EMPLOYMENT TO POPULATION RATIO, Indigenous persons aged 15 years and over



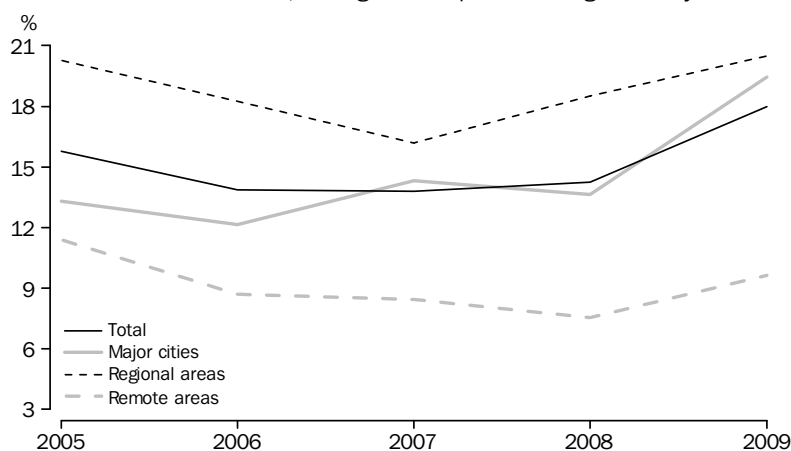
SUMMARY OF FINDINGS *continued*

UNEMPLOYMENT

In 2009, the unemployment rate for the Indigenous population was 18%, with an estimated 35,400 unemployed Indigenous people aged 15 years and over. The unemployment rate increased 4 percentage points from the estimate for 2008 (14%).

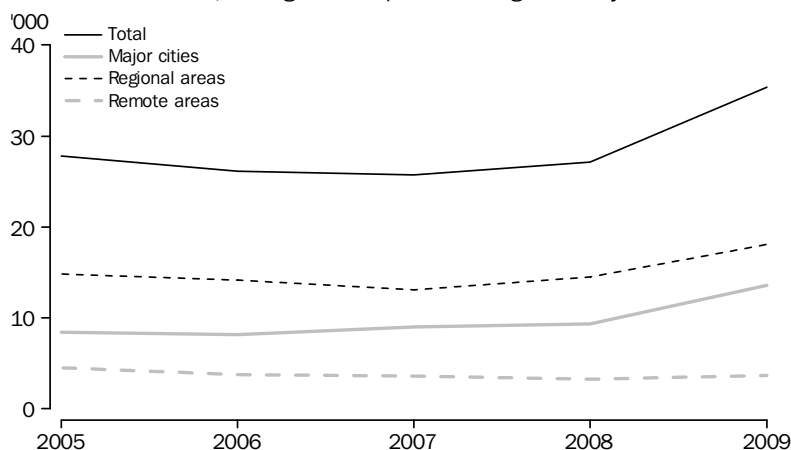
The unemployment rate for Indigenous people was 19% in Major Cities, 20% in Regional areas, and 10% in Remote areas. However, estimates of unemployment for Remote areas should be used with great care as they were subject to high sampling errors. In addition, Remote areas generally have an underdeveloped labour market and this was reflected in the low number of Indigenous people actively looking for work and therefore not classified as unemployed.

UNEMPLOYMENT RATE, Indigenous persons aged 15 years and over



Between 2008 and 2009, estimates of Indigenous unemployment significantly increased from 27,100 to 35,400 (30% growth). This was driven by unemployment increases of 9,300 to 13,500 in Major cities (45% growth), and 14,500 to 18,100 in Regional areas (25%). Females accounted for 62% of the growth in unemployment in Major cities, while males accounted for all of the increased unemployment in regional areas, offset by a small decrease in female unemployment. Estimates of unemployment in remote areas also increased, but were within standard movement errors and were not statistically significant.

UNEMPLOYMENT, Indigenous persons aged 15 years and over



LIST OF TABLES

page

INDIGENOUS PERSONS AGED 15 YEARS AND OVER

- 1** Indigenous persons aged 15 years and over, labour force status by remoteness 12
- 2** Indigenous persons aged 15 years and over, labour force status by age groups 14
- 3** Indigenous persons aged 15 years and over, labour force status by states and territories 17

INDIGENOUS PERSONS AGED 15 TO 64 YEARS

- 4** Indigenous persons aged 15 to 64 years, labour force status by remoteness 19

PROPORTIONS

- 5** Proportions of Indigenous persons aged 15 years and over, labour force status by remoteness 21

INDIGENOUS PERSONS AGED 15 YEARS AND OVER, Labour force status by remoteness—2005 to 2009

	Total employed '000	Total unemployed '000	Labour force '000	Not in labour force '000	Civilian population aged 15 years and over '000	Unemployment rate %	Participation rate %	Employment to population ratio %
MALES								
2005								
Major cities	29.9	5.1	35.0	13.8	48.9	14.6	71.7	61.3
Regional areas	33.0	7.8	40.9	22.6	63.5	19.2	64.3	52.0
Remote areas	20.0	*3.1	23.0	17.3	40.3	13.3	57.2	49.6
<i>Australia</i>	<i>82.9</i>	<i>16.0</i>	<i>98.9</i>	<i>53.7</i>	<i>152.7</i>	<i>16.2</i>	<i>64.8</i>	<i>54.3</i>
2006								
Major cities	32.0	4.7	36.7	13.9	50.6	12.7	72.6	63.3
Regional areas	35.4	7.4	42.8	24.8	67.5	17.3	63.3	52.4
Remote areas	22.4	*2.2	24.5	15.2	39.8	*8.9	61.7	56.2
<i>Australia</i>	<i>89.8</i>	<i>14.3</i>	<i>104.0</i>	<i>53.9</i>	<i>157.9</i>	<i>13.7</i>	<i>65.9</i>	<i>56.9</i>
2007								
Major cities	30.0	4.1	34.1	18.2	52.3	12.1	65.3	57.3
Regional areas	39.2	7.5	46.7	22.9	69.7	16.0	67.1	56.3
Remote areas	22.4	2.3	24.6	16.5	41.1	9.2	60.0	54.4
<i>Australia</i>	<i>91.6</i>	<i>13.9</i>	<i>105.5</i>	<i>57.5</i>	<i>163.0</i>	<i>13.2</i>	<i>64.7</i>	<i>56.2</i>
2008								
Major cities	33.8	4.5	38.3	15.8	54.1	11.8	70.8	62.4
Regional areas	36.8	8.4	45.2	28.7	73.9	18.6	61.2	49.8
Remote areas	20.7	1.7	22.4	18.1	40.5	7.8	55.4	51.1
<i>Australia</i>	<i>91.2</i>	<i>14.7</i>	<i>105.9</i>	<i>62.5</i>	<i>168.4</i>	<i>13.8</i>	<i>62.9</i>	<i>54.2</i>
2009								
Major cities	30.8	6.1	36.9	18.8	55.8	16.5	66.2	55.3
Regional areas	42.6	12.4	55.0	28.5	83.5	22.5	65.8	51.0
Remote areas	15.6	*1.5	17.2	17.3	34.4	*8.8	49.8	45.5
<i>Australia</i>	<i>89.1</i>	<i>20.0</i>	<i>109.1</i>	<i>64.6</i>	<i>173.7</i>	<i>18.3</i>	<i>62.8</i>	<i>51.3</i>
FEMALES								
2005								
Major cities	24.7	3.3	28.0	24.0	52.1	11.7	53.8	47.5
Regional areas	25.6	7.0	32.6	33.9	66.5	21.6	49.0	38.5
Remote areas	15.3	1.5	16.8	24.3	41.1	*8.8	40.8	37.3
<i>Australia</i>	<i>65.6</i>	<i>11.8</i>	<i>77.4</i>	<i>82.2</i>	<i>159.6</i>	<i>15.2</i>	<i>48.5</i>	<i>41.1</i>
2006								
Major cities	26.9	3.5	30.4	23.4	53.8	11.4	56.5	50.1
Regional areas	28.3	6.8	35.1	33.2	68.3	19.4	51.4	41.4
Remote areas	17.5	*1.6	19.1	23.6	42.7	*8.5	44.8	41.0
<i>Australia</i>	<i>72.7</i>	<i>11.9</i>	<i>84.6</i>	<i>80.1</i>	<i>164.7</i>	<i>14.1</i>	<i>51.4</i>	<i>44.1</i>
2007								
Major cities	24.0	4.9	28.9	26.6	55.5	16.9	52.1	43.3
Regional areas	28.6	5.6	34.2	36.8	71.0	16.4	48.2	40.3
Remote areas	16.6	1.3	17.9	25.4	43.3	7.4	41.4	38.3
<i>Australia</i>	<i>69.2</i>	<i>11.8</i>	<i>81.0</i>	<i>88.8</i>	<i>169.8</i>	<i>14.6</i>	<i>47.7</i>	<i>40.7</i>
2008								
Major cities	25.2	4.8	30.0	27.3	57.3	16.1	52.4	43.9
Regional areas	27.0	6.1	33.0	42.3	75.3	18.3	43.9	35.8
Remote areas	19.9	*1.6	21.4	21.0	42.4	*7.3	50.5	46.8
<i>Australia</i>	<i>72.0</i>	<i>12.4</i>	<i>84.4</i>	<i>90.6</i>	<i>175.0</i>	<i>14.7</i>	<i>48.3</i>	<i>41.1</i>
2009								
Major cities	25.3	7.4	32.8	26.2	59.0	22.7	55.5	42.9
Regional areas	27.8	5.7	33.5	44.0	77.5	17.1	43.2	35.9
Remote areas	19.0	*2.2	21.2	22.6	43.8	10.3	48.4	43.4
<i>Australia</i>	<i>72.1</i>	<i>15.4</i>	<i>87.5</i>	<i>92.8</i>	<i>180.2</i>	<i>17.6</i>	<i>48.5</i>	<i>40.0</i>

* estimate is subject to sampling variability too high for most practical purposes

INDIGENOUS PERSONS AGED 15 YEARS AND OVER, Labour force status by remoteness—2005 to 2009 *continued*

	Total employed '000	Total unemployed '000	Labour force '000	Not in labour force '000	Civilian population aged 15 years and over '000	Unemployment rate %	Participation rate %	Employment to population ratio %
PERSONS								
2005								
Major cities	54.7	8.4	63.1	37.8	100.9	13.3	62.5	54.2
Regional areas	58.6	14.9	73.5	56.5	130.0	20.3	56.5	45.1
Remote areas	35.3	4.5	39.8	41.6	81.4	*11.4	48.9	43.4
Australia	148.5	27.8	176.4	135.9	312.3	15.8	56.5	47.6
2006								
Major cities	59.0	8.2	67.1	37.3	104.4	12.1	64.3	56.5
Regional areas	63.6	14.2	77.8	57.9	135.8	18.2	57.3	46.9
Remote areas	39.8	3.8	43.6	38.8	82.4	*8.7	52.9	48.3
Australia	162.5	26.2	188.6	134.0	322.6	13.9	58.5	50.4
2007								
Major cities	54.0	9.0	63.0	44.8	107.8	14.3	58.5	50.1
Regional areas	67.8	13.1	80.9	59.7	140.7	16.2	57.5	48.2
Remote areas	39.0	3.6	42.6	41.9	84.4	8.4	50.4	46.2
Australia	160.8	25.7	186.5	146.4	332.9	13.8	56.0	48.3
2008								
Major cities	58.9	9.3	68.2	43.1	111.3	13.7	61.3	52.9
Regional areas	63.8	14.5	78.2	70.9	149.2	18.5	52.4	42.7
Remote areas	40.6	*3.3	43.9	39.1	82.9	*7.6	52.9	48.9
Australia	163.2	27.1	190.3	153.1	343.4	14.2	55.4	47.5
2009								
Major cities	56.1	13.5	69.7	45.0	114.7	19.4	60.7	48.9
Regional areas	70.4	18.1	88.5	72.5	161.0	20.5	55.0	43.7
Remote areas	34.7	3.7	38.4	39.8	78.2	9.6	49.1	44.3
Australia	161.2	35.4	196.5	157.4	353.9	18.0	55.5	45.5

* estimate is subject to sampling variability too high for most practical purposes

INDIGENOUS PERSONS AGED 15 YEARS AND OVER, Labour force status by age groups—2005 to 2009

	<i>Total employed</i>	<i>Total unemployed</i>	<i>Labour force</i>	<i>Not in labour force</i>	<i>Civilian population aged 15 years and over</i>	<i>Unemployment rate</i>	<i>Participation rate</i>	<i>Employment to population ratio</i>
	'000	'000	'000	'000	'000	%	%	%
MALES								
2005								
15 to 24 years	21.3	7.9	29.2	19.5	48.6	27.0	59.9	43.8
25 to 44 years	43.6	6.7	50.2	12.9	63.2	13.3	79.6	69.0
45 years or over	18.1	*1.5	19.5	21.3	40.9	*7.5	47.8	44.2
<i>Total</i>	82.9	16.0	98.9	53.7	152.7	16.2	64.8	54.3
15 to 64 years	82.7	15.8	98.5	46.8	145.3	16.1	67.8	56.9
2006								
15 to 24 years	25.1	6.7	31.8	19.2	51.0	20.9	62.4	49.3
25 to 44 years	41.9	5.6	47.4	16.0	63.4	11.7	74.8	66.0
45 years or over	22.8	*2.0	24.8	18.7	43.5	*8.2	57.0	52.3
<i>Total</i>	89.8	14.3	104.0	53.9	157.9	13.7	65.9	56.9
15 to 64 years	89.4	14.1	103.4	48.2	151.6	13.6	68.2	58.9
2007								
15 to 24 years	26.0	6.7	32.7	20.6	53.3	20.5	61.3	48.8
25 to 44 years	43.5	6.0	49.5	16.3	65.7	12.1	75.2	66.1
45 years or over	22.2	*1.2	23.4	20.7	44.1	*5.2	53.1	50.3
<i>Total</i>	91.6	13.9	105.5	57.5	163.0	13.2	64.7	56.2
15 to 64 years	91.2	13.9	105.1	50.9	156.0	13.2	67.4	58.5
2008								
15 to 24 years	25.0	7.7	32.7	22.3	55.0	23.5	59.4	45.5
25 to 44 years	42.9	5.6	48.5	18.7	67.2	11.6	72.2	63.8
45 years or over	23.4	*1.4	24.7	21.5	46.3	*5.5	53.5	50.5
<i>Total</i>	91.2	14.7	105.9	62.5	168.4	13.8	62.9	54.2
15 to 64 years	91.2	14.7	105.8	56.9	162.8	13.9	65.0	56.0
2009								
15 to 24 years	23.2	9.1	32.3	25.2	57.5	28.2	56.2	40.4
25 to 44 years	39.9	9.5	49.3	17.4	66.7	19.2	74.0	59.8
45 years or over	26.0	*1.4	27.4	22.1	49.4	*5.1	55.4	52.6
<i>Total</i>	89.1	20.0	109.1	64.6	173.7	18.3	62.8	51.3
15 to 64 years	88.4	20.0	108.4	57.8	166.2	18.4	65.2	53.2

* estimate is subject to sampling variability too high for most practical purposes

INDIGENOUS PERSONS AGED 15 YEARS AND OVER, Labour force status by age groups—2005 to 2009 *continued*

	Total employed	Total unemployed	Labour force	Not in labour force	Civilian population aged 15 years and over	Unemployment rate	Participation rate	Employment to population ratio
	'000	'000	'000	'000	'000	%	%	%
FEMALES								
2005								
15 to 24 years	18.0	5.2	23.2	23.1	46.3	22.4	50.0	38.8
25 to 44 years	30.1	4.8	34.9	33.5	68.3	13.6	51.0	44.1
45 years or over	17.6	1.9	19.4	25.6	45.0	9.5	43.1	39.0
<i>Total</i>	65.6	11.8	77.4	82.2	159.6	15.2	48.5	41.1
15 to 64 years	64.9	11.6	76.6	75.3	151.9	15.2	50.4	42.7
2006								
15 to 24 years	18.9	5.1	24.0	24.1	48.1	21.2	49.9	39.3
25 to 44 years	32.5	5.4	37.9	30.2	68.1	14.1	55.7	47.8
45 years or over	21.3	1.5	22.7	25.9	48.6	6.4	46.7	43.7
<i>Total</i>	72.7	11.9	84.6	80.1	164.7	14.1	51.4	44.1
15 to 64 years	72.2	11.8	84.1	72.1	156.2	14.1	53.8	46.2
2007								
15 to 24 years	18.3	5.3	23.6	27.4	50.9	22.4	46.2	35.9
25 to 44 years	31.8	5.2	37.0	31.8	68.8	14.0	53.7	46.2
45 years or over	19.1	1.4	20.5	29.6	50.1	6.6	40.9	38.2
<i>Total</i>	69.2	11.8	81.0	88.8	169.8	14.6	47.7	40.7
15 to 64 years	68.8	11.8	80.6	81.0	161.6	14.7	49.9	42.6
2008								
15 to 24 years	19.4	5.3	24.7	27.2	51.9	21.4	47.6	37.5
25 to 44 years	32.3	5.2	37.6	32.6	70.1	14.0	53.6	46.1
45 years or over	20.2	*1.9	22.1	30.8	53.0	*8.7	41.8	38.2
<i>Total</i>	72.0	12.4	84.4	90.6	175.0	14.7	48.3	41.1
15 to 64 years	71.3	12.4	83.7	81.4	165.2	14.9	50.7	43.2
2009								
15 to 24 years	18.3	5.8	24.1	30.6	54.7	24.2	44.1	33.4
25 to 44 years	33.5	6.9	40.4	31.4	71.8	17.2	56.3	46.6
45 years or over	20.3	*2.6	22.9	30.8	53.7	*11.3	42.7	37.9
<i>Total</i>	72.1	15.4	87.5	92.8	180.2	17.6	48.5	40.0
15 to 64 years	71.7	15.4	87.1	83.3	170.3	17.6	51.1	42.1

* estimate is subject to sampling variability too high for most practical purposes

INDIGENOUS PERSONS AGED 15 YEARS AND OVER, Labour force status by age groups—2005 to 2009 *continued*

	<i>Total employed</i>	<i>Total unemployed</i>	<i>Labour force</i>	<i>Not in labour force</i>	<i>Civilian population aged 15 years and over</i>	<i>Unemployment rate</i>	<i>Participation rate</i>	<i>Employment to population ratio</i>
	'000	'000	'000	'000	'000	%	%	%
PERSONS								
2005								
15 to 24 years	39.3	13.0	52.3	42.6	94.9	24.9	55.1	41.4
25 to 44 years	73.7	11.4	85.1	46.4	131.5	13.4	64.7	56.0
45 years or over	35.6	3.3	38.9	47.0	85.9	8.5	45.3	41.5
Total	148.5	27.8	176.4	135.9	312.3	15.8	56.5	47.6
15 to 64 years	147.6	27.4	175.1	122.1	297.1	15.7	58.9	49.7
2006								
15 to 24 years	44.0	11.7	55.8	43.3	99.0	21.1	56.3	44.5
25 to 44 years	74.4	10.9	85.3	46.1	131.5	12.8	64.9	56.6
45 years or over	44.0	3.5	47.5	44.6	92.1	7.4	51.6	47.8
Total	162.5	26.2	188.6	134.0	322.6	13.9	58.5	50.4
15 to 64 years	161.6	25.9	187.5	120.3	307.8	13.8	60.9	52.5
2007								
15 to 24 years	44.3	12.0	56.2	48.0	104.2	21.3	54.0	42.5
25 to 44 years	75.2	11.2	86.4	48.1	134.5	12.9	64.3	55.9
45 years or over	41.3	2.6	43.9	50.3	94.2	5.9	46.6	43.9
Total	160.8	25.7	186.5	146.4	332.9	13.8	56.0	48.3
15 to 64 years	160.0	25.7	185.7	131.9	317.6	13.8	58.5	50.4
2008								
15 to 24 years	44.5	13.0	57.4	49.5	106.9	22.6	53.7	41.6
25 to 44 years	75.2	10.9	86.0	51.2	137.3	12.6	62.7	54.8
45 years or over	43.6	3.3	46.9	52.4	99.2	7.0	47.2	43.9
Total	163.2	27.1	190.3	153.1	343.4	14.2	55.4	47.5
15 to 64 years	162.5	27.1	189.6	138.4	327.9	14.3	57.8	49.5
2009								
15 to 24 years	41.5	15.0	56.5	55.7	112.2	26.5	50.3	37.0
25 to 44 years	73.4	16.4	89.8	48.8	138.6	18.3	64.8	53.0
45 years or over	46.3	4.0	50.3	52.9	103.2	7.9	48.8	44.9
Total	161.2	35.4	196.5	157.4	353.9	18.0	55.5	45.5
15 to 64 years	160.2	35.4	195.5	141.0	336.6	18.1	58.1	47.6

INDIGENOUS PERSONS AGED 15 YEARS AND OVER, Labour force status by States and Territories(a)—2005 to 2009

	Total employed	Total unemployed	Labour force	Not in labour force	Civilian population aged 15 years and over	Unemployment rate	Participation rate	Employment to population ratio	Civilian population living in Remote areas
	'000	'000	'000	'000	'000	%	%	%	%
NEW SOUTH WALES									
2005	43.7	7.5	51.2	39.9	91.1	14.7	56.2	47.9	5.2
2006	44.1	8.1	52.2	42.1	94.3	15.6	55.4	46.7	5.6
2007	42.2	10.3	52.5	44.8	97.3	19.7	53.9	43.3	4.8
2008	42.7	9.8	52.5	47.8	100.3	18.7	52.3	42.5	*1.2
2009	44.5	11.8	56.2	47.1	103.3	20.9	54.4	43.1	*1.5
VICTORIA									
2005	9.9	3.0	12.9	7.5	20.4	23.4	63.3	48.5	—
2006	11.9	1.4	13.3	7.8	21.1	*10.3	62.9	56.5	—
2007	10.8	1.8	12.6	9.3	21.8	*14.4	57.6	49.3	—
2008	11.2	*2.1	13.2	9.4	22.6	*15.5	58.6	49.5	—
2009	10.6	*2.2	12.8	10.5	23.3	*17.1	55.0	45.6	—
QUEENSLAND									
2005	45.9	7.5	53.3	32.2	85.5	14.0	62.4	53.6	22.9
2006	50.7	7.3	58.0	30.5	88.5	12.5	65.5	57.3	22.9
2007	52.9	5.7	58.7	33.0	91.7	9.8	64.0	57.7	22.9
2008	52.3	7.6	59.8	35.3	95.1	12.7	62.9	55.0	22.9
2009	48.2	12.6	60.8	37.6	98.5	20.8	61.8	49.0	15.4
SOUTH AUSTRALIA									
2005	7.0	1.7	8.7	8.5	17.3	19.1	50.5	40.8	*25.4
2006	8.7	*1.6	10.3	7.5	17.8	*15.3	57.9	49.1	19.7
2007	8.0	*1.4	9.4	8.9	18.3	*15.4	51.5	43.6	19.7
2008	7.6	*1.8	9.4	9.5	18.8	18.8	49.7	40.3	19.6
2009	8.7	1.4	10.1	9.3	19.4	13.6	52.0	45.0	19.6
WESTERN AUSTRALIA									
2005	20.8	3.7	24.5	19.2	43.7	15.1	56.1	47.6	44.1
2006	23.7	3.5	27.3	17.7	45.0	13.0	60.6	52.7	44.1
2007	19.9	*2.5	22.4	23.8	46.3	11.2	48.5	43.1	44.2
2008	21.9	2.7	24.6	23.0	47.6	11.1	51.7	45.9	44.2
2009	19.2	5.0	24.3	24.7	48.9	20.7	49.6	39.3	44.3
TASMANIA									
2005	6.5	1.2	7.7	3.5	11.2	15.5	68.4	57.8	*8.2
2006	6.1	1.1	7.2	4.5	11.7	15.2	61.6	52.3	*1.3
2007	7.1	0.7	7.8	4.2	12.0	9.2	64.9	58.9	*4.4
2008	7.0	*0.7	7.7	4.7	12.5	*9.6	62.0	56.1	*2.0
2009	8.5	*0.4	8.9	4.0	12.9	*4.1	69.0	66.2	*0.7

* estimate is subject to sampling variability too high for most practical purposes

— nil or rounded to zero (including null cells)

(a) Caution should be used when comparing estimates across states and territories, and over time within states and territories. See paragraph 23 in Explanatory Notes for further information.

INDIGENOUS PERSONS AGED 15 YEARS AND OVER, Labour force status by States and Territories(a)—2005 to 2009 *continued*

	<i>Total employed</i>	<i>Total unemployed</i>	<i>Labour force</i>	<i>Not in labour force</i>	<i>Civilian population aged 15 years and over</i>	<i>Unemployment rate</i>	<i>Participation rate</i>	<i>Employment to population ratio</i>	<i>Civilian population living in Remote areas</i>
	'000	'000	'000	'000	'000	%	%	%	%
NORTHERN TERRITORY									
2005	13.1	3.1	16.2	24.4	40.6	19.4	40.0	32.2	80.1
2006	15.8	2.9	18.7	22.9	41.6	15.3	44.9	38.0	80.2
2007	18.3	3.1	21.4	21.2	42.6	14.3	50.2	43.0	80.2
2008	18.7	2.3	21.0	22.7	43.6	11.0	48.1	42.8	80.2
2009	19.8	*1.6	21.4	23.2	44.7	7.6	48.0	44.3	80.3
AUSTRALIAN CAPITAL TERRITORY									
2005	1.8	*0.1	1.9	0.7	2.6	*5.7	71.5	67.4	—
2006	1.4	*0.3	1.8	1.0	2.7	*18.1	64.5	52.8	—
2007	1.6	*0.1	1.7	1.1	2.8	*6.9	62.0	57.7	—
2008	2.0	*0.1	2.1	*0.8	2.9	*5.7	73.0	68.8	—
2009	1.6	*0.4	2.0	*1.0	3.0	*19.1	65.8	53.3	—

* estimate is subject to sampling variability too high for most practical purposes

— nil or rounded to zero (including null cells)

(a) Caution should be used when comparing estimates across states and territories, and over time within states and territories. See paragraph 23 in Explanatory Notes for further information.

	Total employed	Total unemployed	Labour force	Not in labour force	Civilian population aged 15 to 64 years	Unemployment rate	Participation rate	Employment to population ratio
	'000	'000	'000	'000	'000	%	%	%
MALES								
2005								
Major cities	29.8	5.1	34.9	11.7	46.7	14.6	74.9	63.9
Regional areas	33.0	7.6	40.7	19.9	60.5	18.8	67.2	54.5
Remote areas	19.9	*3.1	22.9	15.1	38.1	13.4	60.2	52.2
<i>Australia</i>	<i>82.7</i>	<i>15.8</i>	<i>98.5</i>	<i>46.8</i>	<i>145.3</i>	<i>16.1</i>	<i>67.8</i>	<i>56.9</i>
2006								
Major cities	31.9	4.7	36.5	11.5	48.0	12.8	76.1	66.4
Regional areas	35.4	7.2	42.6	23.2	65.8	17.0	64.7	53.7
Remote areas	22.1	*2.2	24.3	13.5	37.8	*9.0	64.4	58.6
<i>Australia</i>	<i>89.4</i>	<i>14.1</i>	<i>103.4</i>	<i>48.2</i>	<i>151.6</i>	<i>13.6</i>	<i>68.2</i>	<i>58.9</i>
2007								
Major cities	29.8	4.1	34.0	15.9	49.9	12.2	68.1	59.8
Regional areas	39.1	7.5	46.6	20.0	66.6	16.1	70.0	58.7
Remote areas	22.3	2.3	24.6	15.0	39.6	9.2	62.1	56.3
<i>Australia</i>	<i>91.2</i>	<i>13.9</i>	<i>105.1</i>	<i>50.9</i>	<i>156.0</i>	<i>13.2</i>	<i>67.4</i>	<i>58.5</i>
2008								
Major cities	33.8	4.5	38.3	14.8	53.1	11.8	72.1	63.6
Regional areas	36.7	8.4	45.2	25.3	70.5	18.6	64.1	52.1
Remote areas	20.7	1.7	22.4	16.8	39.2	7.8	57.2	52.8
<i>Australia</i>	<i>91.2</i>	<i>14.7</i>	<i>105.8</i>	<i>56.9</i>	<i>162.8</i>	<i>13.9</i>	<i>65.0</i>	<i>56.0</i>
2009								
Major cities	30.6	6.1	36.7	16.7	53.5	16.6	68.7	57.3
Regional areas	42.5	12.4	54.9	25.1	80.0	22.6	68.6	53.1
Remote areas	15.4	*1.5	16.9	15.9	32.8	*8.9	51.4	46.8
<i>Australia</i>	<i>88.4</i>	<i>20.0</i>	<i>108.4</i>	<i>57.8</i>	<i>166.2</i>	<i>18.4</i>	<i>65.2</i>	<i>53.2</i>
FEMALES								
2005								
Major cities	24.6	3.3	27.9	22.4	50.2	11.8	55.4	48.9
Regional areas	25.5	6.9	32.4	30.3	62.7	21.2	51.7	40.7
Remote areas	14.8	1.5	16.3	22.6	38.9	*9.1	41.8	38.0
<i>Australia</i>	<i>64.9</i>	<i>11.6</i>	<i>76.6</i>	<i>75.3</i>	<i>151.9</i>	<i>15.2</i>	<i>50.4</i>	<i>42.7</i>
2006								
Major cities	26.8	3.5	30.2	21.1	51.3	11.5	58.9	52.2
Regional areas	28.2	6.7	35.0	29.4	64.4	19.3	54.3	43.9
Remote areas	17.2	*1.6	18.8	21.6	40.5	*8.6	46.5	42.5
<i>Australia</i>	<i>72.2</i>	<i>11.8</i>	<i>84.1</i>	<i>72.1</i>	<i>156.2</i>	<i>14.1</i>	<i>53.8</i>	<i>46.2</i>
2007								
Major cities	23.8	4.9	28.7	24.6	53.3	17.0	53.9	44.7
Regional areas	28.4	5.6	34.0	32.8	66.8	16.5	50.8	42.4
Remote areas	16.6	1.3	17.9	23.6	41.5	7.4	43.2	40.0
<i>Australia</i>	<i>68.8</i>	<i>11.8</i>	<i>80.6</i>	<i>81.0</i>	<i>161.6</i>	<i>14.7</i>	<i>49.9</i>	<i>42.6</i>
2008								
Major cities	24.6	4.8	29.4	24.9	54.3	16.4	54.2	45.3
Regional areas	26.9	6.1	32.9	38.3	71.3	18.4	46.2	37.7
Remote areas	19.8	*1.6	21.4	18.3	39.6	*7.3	53.9	50.0
<i>Australia</i>	<i>71.3</i>	<i>12.4</i>	<i>83.7</i>	<i>81.4</i>	<i>165.2</i>	<i>14.9</i>	<i>50.7</i>	<i>43.2</i>
2009								
Major cities	25.3	7.4	32.8	23.3	56.1	22.7	58.4	45.1
Regional areas	27.8	5.7	33.5	39.6	73.1	17.1	45.8	38.0
Remote areas	18.6	*2.2	20.8	20.4	41.2	10.5	50.6	45.3
<i>Australia</i>	<i>71.7</i>	<i>15.4</i>	<i>87.1</i>	<i>83.3</i>	<i>170.3</i>	<i>17.6</i>	<i>51.1</i>	<i>42.1</i>

* estimate is subject to sampling variability too high for most practical purposes

	Total employed	Total unemployed	Labour force	Not in labour force	Civilian population aged 15 to 64 years	Unemployment rate	Participation rate	Employment to population ratio
	'000	'000	'000	'000	'000	%	%	%
PERSONS								
2005								
Major cities	54.4	8.4	62.8	34.1	96.9	13.4	64.8	56.1
Regional areas	58.5	14.5	73.1	50.2	123.2	19.9	59.3	47.5
Remote areas	34.7	4.5	39.2	37.8	77.0	*11.6	50.9	45.0
Australia	147.6	27.4	175.1	122.1	297.1	15.7	58.9	49.7
2006								
Major cities	58.6	8.2	66.8	32.5	99.3	12.2	67.2	59.0
Regional areas	63.6	14.0	77.6	52.6	130.2	18.0	59.6	48.8
Remote areas	39.3	3.8	43.1	35.1	78.2	*8.8	55.1	50.3
Australia	161.6	25.9	187.5	120.3	307.8	13.8	60.9	52.5
2007								
Major cities	53.7	9.0	62.7	40.5	103.2	14.4	60.7	52.0
Regional areas	67.5	13.1	80.6	52.8	133.4	16.3	60.4	50.6
Remote areas	38.9	3.6	42.5	38.6	81.0	8.5	52.4	48.0
Australia	160.0	25.7	185.7	131.9	317.6	13.8	58.5	50.4
2008								
Major cities	58.4	9.3	67.7	39.7	107.3	13.8	63.1	54.4
Regional areas	63.6	14.5	78.1	63.7	141.8	18.5	55.1	44.9
Remote areas	40.5	*3.3	43.8	35.0	78.8	*7.6	55.6	51.4
Australia	162.5	27.1	189.6	138.4	327.9	14.3	57.8	49.5
2009								
Major cities	55.9	13.5	69.5	40.1	109.5	19.5	63.4	51.1
Regional areas	70.2	18.1	88.4	64.7	153.0	20.5	57.7	45.9
Remote areas	34.0	3.7	37.7	36.3	74.0	9.8	51.0	46.0
Australia	160.2	35.4	195.5	141.0	336.6	18.1	58.1	47.6

* estimate is subject to sampling variability too high for most practical purposes

PROPORTIONS OF INDIGENOUS PERSONS AGED 15 YEARS AND OVER, Labour force status by remoteness—2005 to 2009

		2005	2006	2007	2008	2009
EMPLOYED						
Major cities	%	36.8	36.3	33.6	36.1	34.8
Regional areas	%	39.4	39.2	42.2	39.1	43.7
Remote areas	%	23.8	24.5	24.2	24.8	21.5
<i>Australia</i>	%	100.0	100.0	100.0	100.0	100.0
Australia	'000	148.5	162.5	160.8	163.2	161.2
UNEMPLOYED						
Major cities	%	30.2	31.2	35.1	34.4	38.3
Regional areas	%	53.5	54.3	50.9	53.4	51.2
Remote areas	%	16.3	14.5	14.0	*12.2	10.4
<i>Australia</i>	%	100.0	100.0	100.0	100.0	100.0
Australia	'000	27.8	26.2	25.7	27.1	35.4
LABOUR FORCE						
Major cities	%	35.8	35.6	33.8	35.8	35.5
Regional areas	%	41.7	41.3	43.4	41.1	45.0
Remote areas	%	22.6	23.1	22.8	23.0	19.5
<i>Australia</i>	%	100.0	100.0	100.0	100.0	100.0
Australia	'000	176.4	188.6	186.5	190.3	196.5
NOT IN LABOUR FORCE						
Major cities	%	27.8	27.8	30.6	28.1	28.6
Regional areas	%	41.6	43.2	40.8	46.3	46.1
Remote areas	%	30.6	29.0	28.6	25.5	25.3
<i>Australia</i>	%	100.0	100.0	100.0	100.0	100.0
Australia	'000	135.9	134.0	146.4	153.1	157.4
CIVILIAN POPULATION AGED 15 YEARS AND OVER						
Major cities	%	32.3	32.4	32.4	32.4	32.4
Regional areas	%	41.6	42.1	42.3	43.4	45.5
Remote areas	%	26.1	25.6	25.4	24.2	22.1
Australia	%	100.0	100.0	100.0	100.0	100.0
Australia	'000	312.3	322.6	332.9	343.4	353.9

* estimate is subject to sampling variability too high for most practical purposes

EXPLANATORY NOTES

LABOUR FORCE SURVEY METHODOLOGY AND CONCEPTS

1 The Australian Bureau of Statistics (ABS) has been conducting the Labour Force Survey (LFS) since 1960. Originally, the survey was conducted quarterly, before becoming monthly in February 1978. The LFS provides information on the labour market activity of the usually resident civilian population of Australia aged 15 years and over. This section provides information about the LFS methodology, concepts and definitions.

LABOUR FORCE SURVEY METHODOLOGY

2 The LFS is conducted by the ABS to provide monthly labour force statistics. The information is obtained from the occupants of selected dwellings by specially trained interviewers. The information obtained relates to the week before the interview (i.e. the reference week).

3 Households selected for the LFS are interviewed each month for eight months, with one eighth of the sample being replaced each month. The first interview is conducted face-to-face. Subsequent interviews are conducted by telephone (if acceptable to the respondent). A responsible adult in each selected household is asked to provide information about the labour force status of the usual residents and visitors covered by the survey. A usual resident is one who regards that dwelling as their own or main home, and who usually lives there. Persons who are away from their usual residence for six weeks or less are enumerated at their usual residence wherever possible (by obtaining information from other usual residents present at the time of the survey).

4 The scope of the LFS includes all persons aged 15 years and over except members of the permanent defence forces, certain diplomatic personnel of overseas governments customarily excluded from census and estimated population counts, overseas residents in Australia, and members of non-Australian defence forces (and their dependants) stationed in Australia. In common with other ABS household surveys, Jervis Bay Territory is excluded from the scope of the survey.

Benchmarks

5 LFS estimates are calculated in such a way as to add up to independent estimates of the civilian population aged 15 years and over (population benchmarks). Indigenous estimates in this publication were compiled using benchmarks from the low series population projections in *Experimental Estimates and Projections, Aboriginal and Torres Strait Islander Australians, 1991 to 2021* (cat. no. 3238.0). These projections are not predictions or forecasts, but are projections of the 2006 Census data reflecting the growth in population which would occur if certain assumptions about future levels of fertility, mortality, migration and unexplained growth were to prevail over the projection period.

LFS sample

6 In 2009 the LFS was based on a multistage area sample of private dwellings (around 29,000 houses, flats, etc.) and a list sample of non-private dwellings (hotels, motels, etc.), and covers approximately 0.33% of the civilian population of Australia aged 15 years and over.

7 The survey sample is designed so that, within each state or territory, each dwelling has the same probability of selection in the sample. The sampling fractions for each state and territory differ, in order to enable reliable estimates of the main labour force characteristics for each state and territory. For more information on the sample design, refer to *Information Paper: Labour Force Survey Sample Design* (cat. no. 6269.0), released on 1 October 2009.

EXPLANATORY NOTES *continued*

LFS sample continued

8 The LFS sample is not spread evenly across Australia or across a state or territory. The sample is clustered for the practical reason of reducing the costs associated with sample maintenance and of interviewer travel between selected dwellings. The more highly clustered the sample (that is the larger the number of selected units in a small area), the cheaper it is to enumerate, but also the less reliable are estimates derived from the sample (since the sample is confined to a small area and may be less representative). The issue of clustering particularly affects the estimates for remote areas where clustering is higher than in other areas.

9 In the LFS, coverage rules are applied which aim to ensure that each person is associated with only one dwelling, and hence has only one chance of selection. The coverage rules are necessarily a balance between theoretical and operational considerations. Nevertheless, the chance of a person being enumerated at two separate dwellings in the survey is considered to be negligible.

10 As one of a range of ABS savings initiatives for the 2008-09 financial year, there was a 24% reduction in the LFS sample size for the period July 2008 to August 2009, relative to the June 2008 sample size. The sample reduction was reinstated from September 2009 to December 2009, with December 2009 estimates being the first produced under the fully reinstated sample.

LABOUR FORCE CONCEPTS

11 The labour force framework classifies the in-scope population according to their labour force status (that is employed, unemployed, or not in the labour force). The employed and unemployed categories together make up the labour force, which gives a measure of the number of persons contributing to, or willing to contribute to, the supply of labour at the time of the survey.

12 Labour force definitions used by the ABS align closely with international standards and guidelines as specified by the International Labour Organisation (ILO). The definitions used by the ABS are outlined below. More detailed information may be obtained from *Labour Statistics: Concepts, Sources and Methods* (cat. no. 6102.0.55.001), which is available from the ABS web site <www.abs.gov.au>.

Employment

13 Employed persons are those aged 15 years or over who, during the survey reference week, worked for one hour or more for pay, profit or payment in kind in a job or business, or on a farm; or worked for one hour or more without pay in a family business or on a farm; or who had a job but were not at work for a number of specified reasons; or were employers or self-employed persons who had a job, business or farm, but were not at work.

14 The definition of employment specifically refers to work for at least one hour. This definition is used to ensure that any work which contributes to the national accounting measures of national production is included in the measure of employed.

15 Persons are classified as employed based on the actual activities of each person, and this categorisation does not depend on their participation in labour market programs. Persons who participate in labour market programs are counted as employed, unemployed or not in the labour force according to how they respond to questions in the labour force survey about their actual activity in the week before the interview. Two important labour market programs are the 'work for the dole' scheme and the Community Development Employment Projects (CDEP) scheme.

16 Under the 'work for the dole' scheme, some persons receiving income support are required to work on not-for-profit community-based projects for a number of hours per week, which, at the relevant award rate of pay, equates to the income support entitlement. The participants receive their unemployment benefit payments directly from the administering government agency and not from the organisations undertaking the community projects, and therefore the organisations do not have an

EXPLANATORY NOTES *continued*

Employment continued

employer/employee relationship with the scheme participants. Accordingly, persons participating in 'work for the dole' schemes are not regarded as being in paid employment but are considered to be undertaking unpaid work. Depending on other activity they undertake in the survey reference period, they may be classed as unemployed or not in the labour force.

17 The CDEP scheme provides employment for Indigenous people living in remote, rural and urban areas. In a community with a CDEP scheme, the participants are paid a wage by the CDEP organisation to undertake work or training. While the types of activities undertaken might not differ greatly from those undertaken by 'work for the dole' participants, there is an employer/employee relationship between the participants and the CDEP organisation. CDEP participants are therefore treated as employed in the LFS. It is currently not possible to separately identify CDEP participants in the LFS.

18 From July 2009, the CDEP scheme was discontinued in urban and rural areas. CDEP continues to operate in remote communities and participants employed by CDEP organisations prior to July 2009 will continue to receive wages in an employer/employee relationship until CDEP is phased out in July 2011. Participants who joined after July 2009 receive unemployment benefits instead of CDEP wages, and are considered by the ABS to be undertaking unpaid work in a similar manner to those in the 'work for the dole' scheme.

Unemployment

19 Unemployed persons are defined as all persons aged 15 years and over who were not employed during the reference week, and either had actively looked for full-time or part-time work at any time in the four weeks up to the end of the reference week and were available for work in the reference week, or were waiting to start a new job within four weeks from the end of the reference week and could have started in the reference week if the job had been available then.

20 'Actively looking for work' encompasses a range of formal and informal job search activities and includes: writing, telephoning or applying in person to an employer for work; answering an advertisement for a job; checking workplace notice boards or the touch screens at Centrelink offices; being registered as a job seeker with Centrelink; being registered with a Job Network agency or any other employment agency; advertising or tendering for work; and contacting friends or relatives. People actively looking for self-employment jobs (such as looking for a business or to purchase a lease) are also treated as looking for work.

21 People who only looked in newspapers or read job advertisements are seen as passively, rather than actively, looking for work and so are not considered unemployed. The ABS view is that 'only looked in newspapers' does not meet the active search criterion, nor does simply looking at job advertisements on the Internet. It is impossible to obtain work by looking at a job advertisement without some additional, active, job search step (for example, contacting the employer).

Not in the labour force

22 Persons not in the labour force comprise those in the population who satisfy neither the employment nor unemployment criteria. They include persons who don't want to work for a variety of reasons, such as homemakers and retirees from the labour force, and those who cannot work as a result of a disability. It also includes people who are in hospital, prison, or other institutions.

EXPLANATORY NOTES *continued*

DATA QUALITY

23 Care has been taken to ensure that the estimates in this publication are as accurate as possible. There remain, however, other factors which may have affected the reliability of results, and for which no specific adjustments can be made. The following factors should be considered when interpreting these estimates:

- Information recorded in this survey is essentially 'as reported' by respondents, and hence may differ from that which might be obtained from other sources or by using other collection methodologies. Responses may be affected by imperfect recall or individual interpretation of survey questions.
- The labour force characteristics of Indigenous people vary according to remoteness. Differences when comparing estimates between states and territories are therefore likely to be influenced by the distribution of Indigenous people by remoteness within the respective states and territories.
- Some states and territories have relatively small Indigenous populations, therefore the estimates are likely to be based on a very small sample which in turn may affect the data quality.
- The labour force characteristics of Indigenous people living in discrete Indigenous communities can be influenced by whether the community is participating in CDEP. Because of the small number of Indigenous communities selected in the LFS, there is the potential for wide statistical fluctuations in estimates of labour force characteristics of remote Indigenous communities over time if the sample moves from communities participating in CDEP to those which do not (or vice versa). Furthermore, communities that were selected during 2009 may have reported different labour force characteristics before and after the reforms to CDEP in July 2009.

APPENDIX 1 OTHER SOURCES OF INFORMATION

OTHER SOURCES OF INFORMATION

Between 1994 and 2000, a question on Indigenous status was included in the LFS for one month (usually February) every year. The information collected provided a snapshot for that one month in each year, and was published in an earlier issue of this publication (cat. no. 6287.0), released on 20 December 2000. Due to the small sample size, dissemination of Indigenous data was limited to male and females by labour force status, across broad geographical regions of Australia. Data was not released by age group or by state and territory. Due to major differences in the estimation methodology used to produce these previous estimates, comparisons should not be made with estimates in this publication.

Information on the labour force characteristics of the Indigenous population is also available from the five-yearly Census of Population and Housing, the 2008 National Aboriginal and Torres Strait Islander Social Survey (NATSISS), and the 2004-05 National Aboriginal and Torres Strait Islander Health Survey (NATSIHS). The table below provides estimates from these collections as well as annual estimates from the LFS.

Although the estimates available from the non-LFS sources are based on the same underlying concepts as the LFS, there are differences in their collection methodologies, definitions, questions and estimation procedures which affect the comparability of data. The section following the table details the differences between the various sources.

APPENDIX 1 OTHER SOURCES OF INFORMATION *continued*

COMPARISON OF ESTIMATES OF LABOUR FORCE STATUS BY DATA SOURCE AND REMOTENESS, Indigenous persons aged 15 years and over

	Total employed	Total unemployed	Not in labour force	Civilian population aged 15 years and over	Unemp- loyment rate	Partici- pation rate	Employment to population ratio
	'000	'000	'000	'000	%	%	%
2001 Census(a)							
Major city	33.7	8.7	32.0	74.4	20.5	56.9	45.3
Regional area	39.3	12.6	49.6	101.5	24.3	51.2	38.7
Remote area	27.2	3.7	33.7	64.6	12.0	47.9	42.2
Australia(b)	100.3	25.0	115.3	240.7	20.0	52.1	41.7
2002 NATSISS(b)							
Major city	42.3	14.2	29.9	86.4	25.1	65.4	49.0
Regional area	48.2	20.1	50.3	118.6	29.4	57.6	40.6
Remote area	39.9	4.5	32.8	77.1	10.2	57.5	51.7
Australia	130.4	38.8	113.0	282.2	22.9	60.0	46.2
2004/05 NATSIHS(b)							
Major city	46.1	7.0	36.2	89.4	13.2	59.5	51.6
Regional area	58.5	13.9	51.7	124.1	19.2	58.4	47.1
Remote area	39.2	5.3	35.7	80.2	11.8	55.4	48.9
Australia	143.8	26.2	123.6	293.6	15.4	57.9	49.0
2005 LFS							
Major city	54.7	8.4	37.8	100.9	13.3	62.5	54.2
Regional area	58.6	14.9	56.5	130.0	20.3	56.5	45.1
Remote area	35.3	4.5	41.6	81.4	11.4	48.9	43.4
Australia	148.5	27.8	135.9	312.3	15.8	56.5	47.6
2006 LFS							
Major city	59.0	8.2	37.3	104.4	12.1	64.3	56.5
Regional area	63.6	14.2	57.9	135.8	18.2	57.3	46.9
Remote area	39.8	3.8	38.8	82.4	8.7	52.9	48.3
Australia	162.5	26.2	134.0	322.6	13.9	58.5	50.4
2006 Census(a)							
Major city	43.9	7.7	36.2	87.9	15.0	58.8	50.0
Regional area	49.8	10.9	52.9	113.6	18.0	53.4	43.8
Remote area	28.6	3.8	31.6	64.0	11.8	50.7	44.7
Australia(c)	122.3	22.5	120.7	265.5	15.5	54.5	46.1
2007 LFS							
Major city	54.0	9.0	44.8	107.8	14.3	58.5	50.1
Regional area	67.8	13.1	59.7	140.7	16.2	57.5	48.2
Remote area	39.0	3.6	41.9	84.4	8.4	50.4	46.2
Australia	160.8	25.7	146.4	332.9	13.8	56.0	48.3
2008 LFS							
Major city	58.9	9.3	43.1	111.3	13.7	61.3	52.9
Regional area	63.8	14.5	70.9	149.2	18.5	52.4	42.7
Remote area	40.6	3.3	39.1	82.9	7.6	52.9	48.9
Australia	163.2	27.1	153.1	343.4	14.2	55.4	47.5
2008 NATSISS(b)							
Major city	60.0	12.1	33.1	105.2	16.8	68.5	57.0
Regional area	68.5	14.3	57.6	140.4	17.3	59.0	48.8
Remote area	40.6	7.0	33.9	81.5	14.7	58.4	49.8
Australia	169.1	33.4	124.6	327.1	16.5	61.9	51.7
2009 LFS							
Major city	56.1	13.5	45.0	114.7	19.4	60.7	48.9
Regional area	70.4	18.1	72.5	161.0	20.5	55.0	43.7
Remote area	34.7	3.7	39.8	78.2	9.6	49.1	44.3
Australia	161.2	35.4	157.4	353.9	18.0	55.5	45.5

(a) Excludes people who did not state their Indigenous status, and those who did not state their labour force status

(b) Includes residents of private dwellings only.

(c) Excludes people in Migratory and Other Territories.

APPENDIX 1 OTHER SOURCES OF INFORMATION *continued*

POPULATION CENSUS

The five-yearly Census of Population and Housing is a source of information on small population groups such as the Indigenous population. The Census also provides information for small geographic regions. However, the Census collects only a limited range of labour force information, and the questionnaire is mainly completed by people answering the questions by themselves (or by another household member on their behalf), without an interviewer present (although interviewers are used in most discrete Indigenous communities). Because the self-enumerated questionnaire module defines unemployment less precisely than the LFS, the estimates produced are not strictly comparable with those from the LFS.

The number of Indigenous people aged 15 years and over enumerated in the 2006 Census is lower than the 2006 estimated resident Indigenous population and subsequent low-series Indigenous population projections (used for the LFS Indigenous population benchmarks). To obtain the estimated resident Indigenous population for 2006, various adjustments were made to the 8 August 2006 Census estimates. These adjustments included accounting for non-response to the Aboriginal and Torres Strait Islander origin question, net Census undercount of Indigenous persons, and residents temporarily overseas on Census night. See the Explanatory Notes in *Experimental Estimates and Projections, Aboriginal and Torres Strait Islander Australians* (cat. no. 3238.0) for further information.

As a result of the differing population bases, estimates of labour force characteristics from the Census are substantially lower for the employed, though the difference is less pronounced for the unemployed. Estimates of rates, such as the unemployment or labour force participation rate, which do not depend on having the same base population, show Census results which are quite similar to estimates from other Indigenous data sources.

To be consistent with the estimates in this publication, the Census data used here are based on place of enumeration and exclude Indigenous people in Other Territories and Indigenous people who did not state their labour force status.

While the Census aims to derive labour force status on a basis comparable with the LFS, the Census questions are not as detailed, nor as comprehensive. Largely due to space limitations on the Census form, as well as constraints imposed by self-enumeration, the Census uses a shorter questionnaire module to determine labour force status. This shorter questionnaire module produces different estimates of employment, unemployment and not in the labour force, than the full LFS questionnaire (which was used in 80% of LFS interviews with Indigenous respondents, with a short questionnaire used for the remaining 20%, mainly in remote communities). The shortened set of questions in the Census cannot determine labour force status as precisely as the full LFS questionnaire does, resulting in some differences. Other differences occur because of the self-enumerated nature of the Census forms and the inevitable differences in interpretation among respondents. As a result, the LFS and Census definitions differ slightly for those employed, unemployed, and not in the labour force.

NATIONAL ABORIGINAL AND TORRES STRAIT ISLANDER SOCIAL SURVEY

The 2008 NATSISS (cat. no. 4714.0) was a survey of approximately 13,300 Indigenous persons, of which 7,300 were aged 15 years and over. Although the underlying concepts were the same as in the LFS, the questions and definitions relating to the labour force differed slightly from those used in the LFS.

The NATSISS estimates were benchmarked to the low series Indigenous population projections for those aged 15 years and over living in *private dwellings* in each state and territory, at 31 December 2008. Consequently, the NATSISS benchmarks are lower than the benchmarks used for LFS annual estimates, which include people living in other types of dwellings, such as hotels and boarding houses.

APPENDIX 1 OTHER SOURCES OF INFORMATION *continued*

NATIONAL ABORIGINAL AND TORRES STRAIT ISLANDER SOCIAL SURVEY *continued*

In addition to the differing population bases, labour force estimates from NATSISS are likely to be different to the LFS due to the use of a shorter questionnaire module in the NATSISS. This questionnaire module has been found to categorise 1% of unemployed persons (as defined by the LFS) as not in the labour force. Also, there are some situations where people would be classified as either unemployed or not in the labour force in the LFS, but where the reduced questionnaire module is used, are classified as employed (about 0.1% of employed).

The NATSISS also differs from current LFS practices by specifically asking about participation in CDEP. All respondents were asked whether they were CDEP participants, regardless of whether they reported having a job in the reference week or not. Therefore, while some respondents in the NATSISS did not consider CDEP participation to be a job, they were classified as employed due to their participation in CDEP.

NATIONAL ABORIGINAL AND TORRES STRAIT ISLANDER HEALTH SURVEY

The 2004–05 NATSIHS (cat. no. 4715.0) labour force results are based on a total of 6,325 Aboriginal and Torres Strait Islanders aged 15 years and over from across Australia. These people were interviewed between August 2004 and July 2005.

The 2004–05 NATSIHS was benchmarked to the estimated Indigenous resident population living in *private dwellings* in each state and territory at 31 December 2004. This low series population projection was based on results from the 2001 Census of Population and Housing. The 2004–05 NATSIHS sample covered usual residents of private dwellings only. Residents of dwellings such as hotels, motels, hostels and hospitals, and visitors to private dwellings, were not included in the survey.

The 2004–05 NATSIHS used a shorter questionnaire module to determine labour force status. Like the NATSISS, all respondents were asked whether they were CDEP participants, regardless of whether they reported having a job in the reference week or not. Therefore, while some respondents in the NATSIHS did not consider CDEP participation to be a job, they were classified as employed due to their participation in CDEP.

FUTURE DATA COLLECTIONS

In addition to the continued publication of annual estimates from the LFS in this publication, data on the labour force characteristics of Indigenous people will be next available from the 2011 Census of Population and Housing.

APPENDIX 2 COMPARISONS WITH NON-INDIGENOUS ESTIMATES

COMPARISONS WITH OTHER LFS ESTIMATES

The methodology used to produce the estimates in this publication can also be used to produce estimates of the non-Indigenous population and total civilian population. The following tables show these estimates for 2009. There are a number of considerations when making comparisons with the labour force characteristics of Indigenous people.

Comparisons with non-Indigenous population

The Indigenous population has a younger age structure than the non-Indigenous population, which can make direct comparisons misleading. While the Indigenous population aged 65 years and over accounted for 5% of the total Indigenous population aged 15 years and over in 2009, the corresponding proportion was 16% for the non-Indigenous population. It is possible to remove the effect of the differences in age structures through age-standardisation. However, the estimates in this publication have not been age-standardised. For this reason, caution should be used if a comparison of Indigenous and non-Indigenous estimates is made. This is especially relevant in comparisons of rates and ratios, such as the participation rate, of the Indigenous and non-Indigenous populations.

Another reason for caution when comparing Indigenous and non-Indigenous estimates is the geographical distribution of the two populations. About one-quarter (22%) of Indigenous people aged 15 years and over lived in Remote areas in 2009. In comparison only 2% of non-Indigenous people aged 15 years and over lived in Remote areas in 2009.

Comparisons with total population estimates

While the total population estimates in this publication are from the LFS, the estimates are not at all comparable with the monthly estimates released from the LFS. The monthly estimates from the LFS are produced:

- for the current month only, rather than 12 months pooled as used for the Indigenous estimates, and
- using different benchmarks to those used for the Indigenous estimates.

The estimates in this publication should be used in analysing the labour force characteristics of Indigenous people only. For information on the labour force characteristics of the Australian civilian population aged 15 years and over refer to *Labour Force, Australia* (cat. no. 6202.0).

APPENDIX 2 COMPARISONS WITH NON-INDIGENOUS ESTIMATES

continued

COMPARISON OF INDIGENOUS AND NON-INDIGENOUS ESTIMATES (a)—2009

	Total employed	Total unemployed	Labour force	Not in labour force	Civilian population	Unemp- loyment rate	Partici- pation rate	Employ- ment to population ratio
	'000	'000	'000	'000	'000	%	%	%
15 TO 64 YEARS								
MALES								
Major cities								
Indigenous	30.6	6.1	36.7	16.7	53.5	16.6	68.7	57.3
Non-Indigenous	3 947.0	251.1	4 198.1	843.9	5 042.0	6.0	83.3	78.3
Total	3 977.7	257.2	4 234.8	860.6	5 095.5	6.1	83.1	78.1
Regional areas								
Indigenous	42.5	12.4	54.9	25.1	80.0	22.6	68.6	53.1
Non-Indigenous	1 581.0	86.0	1 667.1	361.7	2 028.8	5.2	82.2	77.9
Total	1 623.5	98.4	1 721.9	386.8	2 108.7	5.7	81.7	77.0
Remote areas								
Indigenous	15.4	1.5	16.9	15.9	32.8	8.9	51.4	46.8
Non-Indigenous	112.1	2.2	114.3	14.0	128.3	1.9	89.1	87.4
Total	127.5	3.7	131.2	29.9	161.1	2.8	81.4	79.1
Australia								
Indigenous	88.4	20.0	108.4	57.8	166.2	18.4	65.2	53.2
Non-Indigenous	5 640.2	339.3	5 979.5	1 219.6	7 199.1	5.7	83.1	78.3
Total	5 728.6	359.3	6 088.0	1 277.4	7 365.3	5.9	82.7	77.8
FEMALES								
Major cities								
Indigenous	25.3	7.4	32.8	23.3	56.1	22.7	58.4	45.1
Non-Indigenous	3 418.0	195.1	3 613.1	1 513.7	5 126.8	5.4	70.5	66.7
Total	3 443.3	202.6	3 645.9	1 537.0	5 182.9	5.6	70.3	66.4
Regional areas								
Indigenous	27.8	5.7	33.5	39.6	73.1	17.1	45.8	38.0
Non-Indigenous	1 339.2	72.2	1 411.4	602.9	2 014.3	5.1	70.1	66.5
Total	1 367.0	77.9	1 444.9	642.5	2 087.4	5.4	69.2	65.5
Remote areas								
Indigenous	18.6	2.2	20.8	20.4	41.2	10.5	50.6	45.3
Non-Indigenous	83.0	2.9	85.9	26.0	112.0	3.4	76.8	74.1
Total	101.6	5.1	106.7	46.4	153.1	4.8	69.7	66.4
Australia								
Indigenous	71.7	15.4	87.1	83.3	170.3	17.6	51.1	42.1
Non-Indigenous	4 840.2	270.2	5 110.4	2 142.6	7 253.0	5.3	70.5	66.7
Total	4 911.9	285.6	5 197.5	2 225.9	7 423.4	5.5	70.0	66.2

(a) There are a number of reasons caution should be used if a comparison of Indigenous and non-Indigenous estimates is made. See page 30 for details.

APPENDIX 2 COMPARISONS WITH NON-INDIGENOUS ESTIMATES

continued

COMPARISON OF INDIGENOUS AND NON-INDIGENOUS ESTIMATES (a)—2009 *continued*

	Total employed	Total unemployed	Labour force	Not in labour force	Civilian population	Unemp- loyment rate	Partici- pation rate	Employ- ment to population ratio
	'000	'000	'000	'000	'000	%	%	%
15 TO 64 YEARS <i>cont.</i>								
PERSONS								
Major cities								
Indigenous	55.9	13.5	69.5	40.1	109.5	19.5	63.4	51.1
Non-Indigenous	7 365.0	446.2	7 811.2	2 357.6	10 168.8	5.7	76.8	72.4
Total	7 421.0	459.7	7 880.7	2 397.7	10 278.4	5.8	76.7	72.2
Regional areas								
Indigenous	70.2	18.1	88.4	64.7	153.0	20.5	57.7	45.9
Non-Indigenous	2 920.2	158.2	3 078.4	964.6	4 043.0	5.1	76.1	72.2
Total	2 990.4	176.3	3 166.8	1 029.3	4 196.1	5.6	75.5	71.3
Remote areas								
Indigenous	34.0	3.7	37.7	36.3	74.0	9.8	51.0	46.0
Non-Indigenous	195.1	5.1	200.3	40.0	240.3	2.6	83.3	81.2
Total	229.1	8.8	238.0	76.3	314.3	3.7	75.7	72.9
Australia								
Indigenous	160.2	35.4	195.5	141.0	336.6	18.1	58.1	47.6
Non-Indigenous	10 480.4	609.5	11 089.9	3 362.2	14 452.1	5.5	76.7	72.5
Total	10 640.5	644.9	11 285.4	3 503.3	14 788.7	5.7	76.3	72.0

(a) There are a number of reasons caution should be used if a comparison of Indigenous and non-Indigenous estimates is made. See page 30 for details.

APPENDIX 2 COMPARISONS WITH NON-INDIGENOUS ESTIMATES

continued

COMPARISON OF INDIGENOUS AND NON-INDIGENOUS ESTIMATES (a)—2009 *continued*

	Total employed	Total unemployed	Labour force	Not in labour force	Civilian population	Unemp- loyment rate	Partici- pation rate	Employ- ment to population ratio
	'000	'000	'000	'000	'000	%	%	%
15 YEARS AND OVER								
MALES								
Major cities								
Indigenous	30.8	6.1	36.9	18.8	55.8	16.5	66.2	55.3
Non-Indigenous	4 074.7	253.2	4 327.8	1 569.3	5 897.1	5.8	73.4	69.1
Total	4 105.5	259.3	4 364.7	1 588.1	5 952.9	5.9	73.3	69.0
Regional areas								
Indigenous	42.6	12.4	55.0	28.5	83.5	22.5	65.8	51.0
Non-Indigenous	1 657.0	86.9	1 743.9	726.0	2 469.9	5.0	70.6	67.1
Total	1 699.6	99.3	1 798.9	754.5	2 553.4	5.5	70.5	66.6
Remote areas								
Indigenous	15.6	1.5	17.2	17.3	34.4	8.8	49.8	45.5
Non-Indigenous	117.3	2.5	119.8	30.9	150.7	2.1	79.5	77.8
Total	132.9	4.0	136.9	48.2	185.1	2.9	74.0	71.8
Australia								
Indigenous	89.1	20.0	109.1	64.6	173.7	18.3	62.8	51.3
Non-Indigenous	5 848.9	342.5	6 191.5	2 326.2	8 517.7	5.5	72.7	68.7
Total	5 938.0	362.5	6 300.6	2 390.8	8 691.4	5.8	72.5	68.3
FEMALES								
Major cities								
Indigenous	25.3	7.4	32.8	26.2	59.0	22.7	55.5	42.9
Non-Indigenous	3 482.2	195.8	3 678.0	2 472.8	6 150.8	5.3	59.8	56.6
Total	3 507.5	203.2	3 710.8	2 499.0	6 209.8	5.5	59.8	56.5
Regional areas								
Indigenous	27.8	5.7	33.5	44.0	77.5	17.1	43.2	35.9
Non-Indigenous	1 373.4	72.6	1 446.0	1 036.6	2 482.6	5.0	58.2	55.3
Total	1 401.2	78.3	1 479.5	1 080.6	2 560.1	5.3	57.8	54.7
Remote areas								
Indigenous	19.0	2.2	21.2	22.6	43.8	10.3	48.4	43.4
Non-Indigenous	84.7	2.9	87.6	39.0	126.6	3.3	69.2	66.9
Total	103.8	5.1	108.9	61.6	170.4	4.7	63.9	60.9
Australia								
Indigenous	72.1	15.4	87.5	92.8	180.2	17.6	48.5	40.0
Non-Indigenous	4 940.4	271.3	5 211.6	3 548.4	8 760.0	5.2	59.5	56.4
Total	5 012.5	286.6	5 299.1	3 641.2	8 940.3	5.4	59.3	56.1

(a) There are a number of reasons caution should be used if a comparison of Indigenous and non-Indigenous estimates is made. See page 30 for details.

APPENDIX 2 COMPARISONS WITH NON-INDIGENOUS ESTIMATES

continued

COMPARISON OF INDIGENOUS AND NON-INDIGENOUS ESTIMATES (a)—2009 *continued*

	<i>Total employed</i>	<i>Total unemployed</i>	<i>Labour force</i>	<i>Not in labour force</i>	<i>Civilian population</i>	<i>Unemp- loyment rate</i>	<i>Partici- pation rate</i>	<i>Empley- ment to population ratio</i>
	'000	'000	'000	'000	'000	%	%	%
15 YEARS AND OVER <i>cont.</i>								
PERSONS								
Major cities								
Indigenous	56.1	13.5	69.7	45.0	114.7	19.4	60.7	48.9
Non-Indigenous	7 556.9	448.9	8 005.8	4 042.1	12 047.9	5.6	66.4	62.7
Total	7 613.0	462.5	8 075.5	4 087.1	12 162.6	5.7	66.4	62.6
Regional areas								
Indigenous	70.4	18.1	88.5	72.5	161.0	20.5	55.0	43.7
Non-Indigenous	3 030.4	159.4	3 189.9	1 762.6	4 952.5	5.0	64.4	61.2
Total	3 100.8	177.6	3 278.4	1 835.1	5 113.5	5.4	64.1	60.6
Remote areas								
Indigenous	34.7	3.7	38.4	39.8	78.2	9.6	49.1	44.3
Non-Indigenous	202.0	5.4	207.4	69.9	277.3	2.6	74.8	72.8
Total	236.7	9.1	245.8	109.8	355.5	3.7	69.1	66.6
Australia								
Indigenous	161.2	35.4	196.5	157.4	353.9	18.0	55.5	45.5
Non-Indigenous	10 789.3	613.8	11 403.1	5 874.6	17 277.7	5.4	66.0	62.4
Total	10 950.5	649.2	11 599.6	6 032.0	17 631.6	5.6	65.8	62.1

(a) There are a number of reasons caution should be used if a comparison of Indigenous and non-Indigenous estimates is made. See page 30 for details.

APPENDIX 2 COMPARISONS WITH NON-INDIGENOUS ESTIMATES

continued

COMPARISON OF INDIGENOUS AND NON-INDIGENOUS ESTIMATES(a), Persons aged 15 to 64 years—2009

	Total employed	Total unemployed	Labour force	Not in labour force	Civilian population aged 15 to 64 years	Unemp- loyment rate	Partici- pation rate	Employ- ment to population ratio
	'000	'000	'000	'000	'000	%	%	%
NEW SOUTH WALES								
Males								
Indigenous	26.9	6.0	32.9	15.1	48.0	18.4	68.5	55.9
Non-Indigenous	1 783.1	117.4	1 900.5	422.2	2 322.7	6.2	81.8	76.8
Total	1 810.0	123.5	1 933.4	437.3	2 370.7	6.4	81.6	76.3
Females								
Indigenous	17.6	5.7	23.3	27.2	50.5	24.5	46.2	34.9
Non-Indigenous	1 524.5	94.6	1 619.2	733.1	2 352.2	5.8	68.8	64.8
Total	1 542.2	100.3	1 642.5	760.3	2 402.8	6.1	68.4	64.2
Persons								
Indigenous	44.5	11.8	56.2	42.3	98.6	20.9	57.1	45.1
Non-Indigenous	3 307.7	212.0	3 519.7	1 155.3	4 674.9	6.0	75.3	70.8
Total	3 352.1	223.8	3 575.9	1 197.6	4 773.5	6.3	74.9	70.2
VICTORIA								
Males								
Indigenous	5.2	1.1	6.2	5.3	11.5	17.1	54.1	44.9
Non-Indigenous	1 416.3	88.9	1 505.2	318.4	1 823.6	5.9	82.5	77.7
Total	1 421.5	89.9	1 511.4	323.6	1 835.1	5.9	82.4	77.5
Females								
Indigenous	5.5	1.1	6.6	4.9	11.5	17.1	57.2	47.5
Non-Indigenous	1 222.8	70.1	1 292.8	562.4	1 855.2	5.4	69.7	65.9
Total	1 228.2	71.2	1 299.4	567.3	1 866.7	5.5	69.6	65.8
Persons								
Indigenous	10.6	2.2	12.8	10.2	23.0	17.1	55.7	46.2
Non-Indigenous	2 639.1	158.9	2 798.0	880.7	3 678.7	5.7	76.1	71.7
Total	2 649.7	161.1	2 810.8	890.9	3 701.8	5.7	75.9	71.6
QUEENSLAND								
Males								
Indigenous	24.4	8.1	32.5	13.4	45.9	25.0	70.8	53.1
Non-Indigenous	1 143.0	66.3	1 209.4	221.8	1 431.1	5.5	84.5	79.9
Total	1 167.4	74.5	1 241.9	235.2	1 477.1	6.0	84.1	79.0
Females								
Indigenous	23.3	4.5	27.9	17.2	45.1	16.2	61.8	51.8
Non-Indigenous	991.4	51.1	1 042.5	398.8	1 441.3	4.9	72.3	68.8
Total	1 014.8	55.6	1 070.4	416.0	1 486.4	5.2	72.0	68.3
Persons								
Indigenous	47.7	12.6	60.4	30.6	91.0	20.9	66.4	52.5
Non-Indigenous	2 134.5	117.4	2 251.9	620.6	2 872.4	5.2	78.4	74.3
Total	2 182.2	130.1	2 312.3	651.2	2 963.4	5.6	78.0	73.6

(a) There are a number of reasons caution should be used if a comparison of Indigenous and non-Indigenous estimates is made. See page 30 for details.

APPENDIX 2 COMPARISONS WITH NON-INDIGENOUS ESTIMATES

continued

COMPARISON OF INDIGENOUS AND NON-INDIGENOUS ESTIMATES(a), Persons aged 15 to 64 years—2009 *continued*

	Total employed	Total unemployed	Labour force	Not in labour force	Civilian population aged 15 to 64 years	Unemp- loyment rate	Partici- pation rate	Employ- ment to population ratio
	'000	'000	'000	'000	'000	%	%	%
SOUTH AUSTRALIA								
Males								
Indigenous	5.4	0.8	6.2	2.8	9.0	12.5	69.3	60.6
Non-Indigenous	407.8	25.4	433.2	98.1	531.3	5.9	81.5	76.7
Total	413.2	26.2	439.4	100.9	540.3	6.0	81.3	76.5
Females								
Indigenous	3.2	0.6	3.8	5.7	9.5	15.5	39.8	33.7
Non-Indigenous	366.9	19.6	386.5	153.2	539.7	5.1	71.6	68.0
Total	370.1	20.2	390.3	158.9	549.3	5.2	71.1	67.4
Persons								
Indigenous	8.7	1.4	10.0	8.5	18.5	13.6	54.1	46.8
Non-Indigenous	774.7	45.1	819.8	251.3	1 071.1	5.5	76.5	72.3
Total	783.3	46.4	829.8	259.8	1 089.6	5.6	76.2	71.9
WESTERN AUSTRALIA								
Males								
Indigenous	10.6	2.8	13.3	10.2	23.5	20.7	56.7	45.0
Non-Indigenous	626.5	29.5	656.0	101.8	757.9	4.5	86.6	82.7
Total	637.1	32.3	669.3	112.0	781.3	4.8	85.7	81.5
Females								
Indigenous	8.5	2.3	10.8	13.1	23.9	21.0	45.2	35.7
Non-Indigenous	496.2	25.6	521.8	204.8	726.6	4.9	71.8	68.3
Total	504.7	27.8	532.6	217.9	750.5	5.2	71.0	67.3
Persons								
Indigenous	19.1	5.0	24.1	23.3	47.4	20.8	50.9	40.3
Non-Indigenous	1 122.7	55.1	1 177.8	306.6	1 484.4	4.7	79.3	75.6
Total	1 141.8	60.1	1 201.9	329.9	1 531.8	5.0	78.5	74.5
TASMANIA								
Males								
Indigenous	4.6	0.1	4.8	1.2	6.0	2.9	80.2	77.8
Non-Indigenous	116.9	6.6	123.5	33.0	156.5	5.3	78.9	74.7
Total	121.5	6.7	128.2	34.2	162.4	5.2	79.0	74.8
Females								
Indigenous	3.8	0.2	4.1	2.1	6.2	5.5	65.8	62.2
Non-Indigenous	104.9	5.4	110.3	51.5	161.7	4.9	68.2	64.9
Total	108.7	5.6	114.3	53.6	167.9	4.9	68.1	64.8
Persons								
Indigenous	8.5	0.4	8.8	3.3	12.1	4.1	72.9	69.8
Non-Indigenous	221.8	11.9	233.7	84.5	318.2	5.1	73.5	69.7
Total	230.3	12.3	242.6	87.8	330.3	5.1	73.4	69.7

(a) There are a number of reasons caution should be used if a comparison of Indigenous and non-Indigenous estimates is made. See page 30 for details.

APPENDIX 2 COMPARISONS WITH NON-INDIGENOUS ESTIMATES

continued

COMPARISON OF INDIGENOUS AND NON-INDIGENOUS ESTIMATES(a), Persons aged 15 to 64 years—2009 *continued*

	Total employed	Total unemployed	Labour force	Not in labour force	Civilian population aged 15 to 64 years	Unemp- loyment rate	Partici- pation rate	Employ- ment to population ratio
	'000	'000	'000	'000	'000	%	%	%
NORTHERN TERRITORY								
Males								
Indigenous	10.5	1.0	11.5	9.4	20.8	8.4	55.0	50.4
Non-Indigenous	49.2	1.7	50.9	6.1	56.9	3.3	89.3	86.4
Total	59.7	2.6	62.3	15.4	77.8	4.3	80.1	76.7
Females								
Indigenous	9.0	0.7	9.7	12.5	22.1	6.9	43.7	40.7
Non-Indigenous	41.8	1.2	42.9	11.3	54.2	2.7	79.2	77.1
Total	50.8	1.8	52.6	23.7	76.3	3.5	68.9	66.5
Persons								
Indigenous	19.5	1.6	21.1	21.8	42.9	7.7	49.2	45.4
Non-Indigenous	90.9	2.9	93.8	17.3	111.2	3.1	84.4	81.8
Total	110.4	4.5	114.9	39.2	154.1	3.9	74.6	71.7
AUSTRALIAN CAPITAL TERRITORY								
Males								
Indigenous	0.9	0.1	1.0	0.5	1.5	14.2	67.9	58.3
Non-Indigenous	97.3	3.5	100.8	18.3	119.1	3.5	84.7	81.7
Total	98.2	3.6	101.9	18.7	120.6	3.6	84.5	81.4
Females								
Indigenous	0.7	0.2	0.9	0.5	1.5	24.7	65.0	49.0
Non-Indigenous	91.7	2.7	94.4	27.7	122.1	2.9	77.3	75.1
Total	92.4	2.9	95.4	28.2	123.5	3.1	77.2	74.8
Persons								
Indigenous	1.6	0.4	2.0	1.0	3.0	19.2	66.5	53.7
Non-Indigenous	189.1	6.2	195.3	45.9	241.2	3.2	81.0	78.4
Total	190.6	6.6	197.2	46.9	244.1	3.3	80.8	78.1
AUSTRALIA								
Males								
Indigenous	88.4	20.0	108.4	57.8	166.2	18.4	65.2	53.2
Non-Indigenous	5 640.2	339.3	5 979.5	1 219.6	7 199.1	5.7	83.1	78.3
Total	5 728.6	359.3	6 088.0	1 277.4	7 365.3	5.9	82.7	77.8
Females								
Indigenous	71.7	15.4	87.1	83.3	170.3	17.6	51.1	42.1
Non-Indigenous	4 840.2	270.2	5 110.4	2 142.6	7 253.0	5.3	70.5	66.7
Total	4 911.9	285.6	5 197.5	2 225.9	7 423.4	5.5	70.0	66.2
Persons								
Indigenous	160.2	35.4	195.5	141.0	336.6	18.1	58.1	47.6
Non-Indigenous	10 480.4	609.5	11 089.9	3 362.2	14 452.1	5.5	76.7	72.5
Total	10 640.5	644.9	11 285.4	3 503.3	14 788.7	5.7	76.3	72.0

(a) There are a number of reasons caution should be used if a comparison of Indigenous and non-Indigenous estimates is made. See page 30 for details.

APPENDIX 2 COMPARISONS WITH NON-INDIGENOUS ESTIMATES

continued

COMPARISON OF INDIGENOUS AND NON-INDIGENOUS ESTIMATES(a), Persons aged 15 years and over—2009

	Total employed	Total unemployed	Labour force	Not in labour force	Civilian population aged 15 years and over	Unemp- loyment rate	Partici- pation rate	Employ- ment to population ratio
	'000	'000	'000	'000	'000	%	%	%
NEW SOUTH WALES								
Males								
Indigenous	26.9	6.0	32.9	17.8	50.7	18.4	64.9	53.0
Non-Indigenous	1 847.4	118.4	1 965.8	796.9	2 762.7	6.0	71.2	66.9
Total	1 874.3	124.4	1 998.7	814.7	2 813.4	6.2	71.0	66.6
Females								
Indigenous	17.6	5.7	23.3	29.3	52.6	24.5	44.3	33.5
Non-Indigenous	1 558.9	94.8	1 653.7	1 218.5	2 872.1	5.7	57.6	54.3
Total	1 576.5	100.5	1 677.0	1 247.8	2 924.8	6.0	57.3	53.9
Persons								
Indigenous	44.5	11.8	56.2	47.1	103.3	20.9	54.4	43.1
Non-Indigenous	3 406.3	213.1	3 619.4	2 015.4	5 634.8	5.9	64.2	60.5
Total	3 450.8	224.9	3 675.7	2 062.4	5 738.1	6.1	64.1	60.1
VICTORIA								
Males								
Indigenous	5.2	1.1	6.2	5.3	11.5	17.1	54.1	44.9
Non-Indigenous	1 471.1	89.8	1 560.9	594.5	2 155.4	5.8	72.4	68.3
Total	1 476.3	90.8	1 567.1	599.8	2 166.9	5.8	72.3	68.1
Females								
Indigenous	5.5	1.1	6.6	5.2	11.8	17.1	55.8	46.3
Non-Indigenous	1 245.8	70.3	1 316.2	917.6	2 233.8	5.3	58.9	55.8
Total	1 251.3	71.5	1 322.8	922.8	2 245.6	5.4	58.9	55.7
Persons								
Indigenous	10.6	2.2	12.8	10.5	23.3	17.1	55.0	45.6
Non-Indigenous	2 716.9	160.1	2 877.0	1 512.1	4 389.1	5.6	65.5	61.9
Total	2 727.6	162.3	2 889.9	1 522.6	4 412.5	5.6	65.5	61.8
QUEENSLAND								
Males								
Indigenous	24.5	8.1	32.7	15.6	48.3	24.8	67.6	50.8
Non-Indigenous	1 185.4	66.6	1 252.0	435.2	1 687.2	5.3	74.2	70.3
Total	1 210.0	74.7	1 284.7	450.9	1 735.5	5.8	74.0	69.7
Females								
Indigenous	23.7	4.5	28.2	22.0	50.2	16.1	56.2	47.2
Non-Indigenous	1 011.5	51.5	1 063.0	656.8	1 719.8	4.8	61.8	58.8
Total	1 035.2	56.0	1 091.2	678.8	1 770.0	5.1	61.6	58.5
Persons								
Indigenous	48.2	12.6	60.8	37.6	98.5	20.8	61.8	49.0
Non-Indigenous	2 196.9	118.1	2 315.0	1 092.0	3 407.1	5.1	67.9	64.5
Total	2 245.1	130.7	2 375.9	1 129.7	3 505.5	5.5	67.8	64.0

(a) There are a number of reasons caution should be used if a comparison of Indigenous and non-Indigenous estimates is made. See page 30 for details.

APPENDIX 2 COMPARISONS WITH NON-INDIGENOUS ESTIMATES

continued

COMPARISON OF INDIGENOUS AND NON-INDIGENOUS ESTIMATES(a), Persons aged 15 years and over—2009 *continued*

	Total employed	Total unemployed	Labour force	Not in labour force	Civilian population aged 15 years and over	Unemp- loyment rate	Partici- pation rate	Employ- ment to population ratio
	'000	'000	'000	'000	'000	%	%	%
SOUTH AUSTRALIA								
Males								
Indigenous	5.4	0.8	6.2	3.1	9.4	12.5	66.5	58.2
Non-Indigenous	423.5	25.6	449.1	191.6	640.7	5.7	70.1	66.1
Total	428.9	26.4	455.3	194.7	650.1	5.8	70.0	66.0
Females								
Indigenous	3.3	0.6	3.8	6.1	10.0	15.3	38.5	32.6
Non-Indigenous	374.6	19.7	394.2	274.1	668.3	5.0	59.0	56.0
Total	377.8	20.3	398.1	280.3	678.3	5.1	58.7	55.7
Persons								
Indigenous	8.7	1.4	10.1	9.3	19.4	13.6	52.0	45.0
Non-Indigenous	798.0	45.3	843.3	465.7	1 309.1	5.4	64.4	61.0
Total	806.8	46.7	853.4	475.0	1 328.4	5.5	64.2	60.7
WESTERN AUSTRALIA								
Males								
Indigenous	10.7	2.8	13.5	11.0	24.4	20.4	55.1	43.8
Non-Indigenous	649.7	30.2	679.9	201.7	881.6	4.4	77.1	73.7
Total	660.4	32.9	693.3	212.7	906.0	4.7	76.5	72.9
Females								
Indigenous	8.5	2.3	10.8	13.7	24.5	21.0	44.1	34.8
Non-Indigenous	506.9	25.7	532.6	331.4	864.1	4.8	61.6	58.7
Total	515.5	28.0	543.5	345.1	888.6	5.2	61.2	58.0
Persons								
Indigenous	19.2	5.0	24.3	24.7	48.9	20.7	49.6	39.3
Non-Indigenous	1 156.6	55.9	1 212.5	533.1	1 745.6	4.6	69.5	66.3
Total	1 175.9	60.9	1 236.8	557.8	1 794.6	4.9	68.9	65.5
TASMANIA								
Males								
Indigenous	4.7	0.1	4.8	1.5	6.4	2.9	75.8	73.6
Non-Indigenous	120.7	6.6	127.3	63.9	191.3	5.2	66.6	63.1
Total	125.4	6.8	132.1	65.5	197.6	5.1	66.9	63.4
Females								
Indigenous	3.8	0.2	4.1	2.5	6.5	5.5	62.3	58.9
Non-Indigenous	107.0	5.4	112.4	88.3	200.6	4.8	56.0	53.3
Total	110.8	5.6	116.4	90.8	207.2	4.8	56.2	53.5
Persons								
Indigenous	8.5	0.4	8.9	4.0	12.9	4.1	69.0	66.2
Non-Indigenous	227.7	12.0	239.7	152.2	391.9	5.0	61.2	58.1
Total	236.2	12.4	248.6	156.2	404.8	5.0	61.4	58.4

(a) There are a number of reasons caution should be used if a comparison of Indigenous and non-Indigenous estimates is made. See page 30 for details.

APPENDIX 2 COMPARISONS WITH NON-INDIGENOUS ESTIMATES

continued

COMPARISON OF INDIGENOUS AND NON-INDIGENOUS ESTIMATES(a), Persons aged 15 years and over—2009 *continued*

	Total employed	Total unemployed	Labour force	Not in labour force	Civilian population aged 15 years and over	Unemp- loyment rate	Partici- pation rate	Employ- ment to population ratio
	'000	'000	'000	'000	'000	%	%	%
NORTHERN TERRITORY								
Males								
Indigenous	10.8	1.0	11.7	9.8	21.6	8.1	54.5	50.0
Non-Indigenous	50.9	1.7	52.7	10.3	62.9	3.3	83.7	81.0
Total	61.7	2.7	64.4	20.1	84.5	4.2	76.2	73.1
Females								
Indigenous	9.0	0.7	9.7	13.4	23.1	6.9	41.9	39.0
Non-Indigenous	42.4	1.2	43.6	15.2	58.8	2.7	74.1	72.1
Total	51.4	1.8	53.3	28.7	82.0	3.5	65.0	62.8
Persons								
Indigenous	19.8	1.6	21.4	23.2	44.7	7.6	48.0	44.3
Non-Indigenous	93.4	2.9	96.3	25.5	121.8	3.0	79.1	76.7
Total	113.2	4.5	117.7	48.7	166.4	3.8	70.7	68.0
AUSTRALIAN CAPITAL TERRITORY								
Males								
Indigenous	0.9	0.1	1.0	0.5	1.5	14.0	68.2	58.7
Non-Indigenous	100.2	3.7	103.9	32.1	135.9	3.5	76.4	73.7
Total	101.1	3.8	104.9	32.5	137.5	3.7	76.3	73.5
Females								
Indigenous	0.7	0.2	0.9	0.5	1.5	24.7	63.5	47.8
Non-Indigenous	93.2	2.7	95.9	46.4	142.4	2.8	67.4	65.5
Total	94.0	2.9	96.9	47.0	143.9	3.0	67.3	65.3
Persons								
Indigenous	1.6	0.4	2.0	1.0	3.0	19.1	65.8	53.3
Non-Indigenous	193.5	6.4	199.8	78.5	278.3	3.2	71.8	69.5
Total	195.1	6.8	201.8	79.5	281.3	3.4	71.7	69.3
AUSTRALIA								
Males								
Indigenous	89.1	20.0	109.1	64.6	173.7	18.3	62.8	51.3
Non-Indigenous	5 848.9	342.5	6 191.5	2 326.2	8 517.7	5.5	72.7	68.7
Total	5 938.0	362.5	6 300.6	2 390.8	8 691.4	5.8	72.5	68.3
Females								
Indigenous	72.1	15.4	87.5	92.8	180.2	17.6	48.5	40.0
Non-Indigenous	4 940.4	271.3	5 211.6	3 548.4	8 760.0	5.2	59.5	56.4
Total	5 012.5	286.6	5 299.1	3 641.2	8 940.3	5.4	59.3	56.1
Persons								
Indigenous	161.2	35.4	196.5	157.4	353.9	18.0	55.5	45.5
Non-Indigenous	10 789.3	613.8	11 403.1	5 874.6	17 277.7	5.4	66.0	62.4
Total	10 950.5	649.2	11 599.6	6 032.0	17 631.6	5.6	65.8	62.1

(a) There are a number of reasons caution should be used if a comparison of Indigenous and non-Indigenous estimates is made. See page 30 for details.

APPENDIX 3 TECHNICAL NOTE

RELIABILITY OF ESTIMATES

Estimates from the LFS, as with data from all surveys, are subject to error. The data presented in this publication are subject to two sources of error:

- non-sampling error, which arises from imperfections in reporting, recording or processing of data that can occur in any survey or census.
- sampling error, which occurs because data were obtained from a sample rather than the entire population.

NON-SAMPLING ERROR

The main sources of non-sampling error are response errors and non-response bias. These may occur in any enumeration whether it is a full count or a sample.

Response errors include errors on the part of both respondents and interviewers. These reporting errors may arise through inappropriate wording of questions, misunderstanding of what data are required, inability or unwillingness to provide accurate information, and mistakes in answers to questions.

Non-response bias arises because the persons for whom no response is available may have different characteristics in relation to labour market behaviour than persons who responded in the survey.

Non-sampling errors are difficult to quantify in any collection. However, every effort is made to minimise these errors in the LFS by careful design of questionnaires, intensive training and supervision of interviewers and efficient operating procedures.

Non-response bias is minimised by call-backs to those households which do not respond, and is compensated for in the estimation process.

There are a number of other issues associated with collecting information from Indigenous persons of communities in remote areas. Although special procedures are used in some Indigenous communities, there may still be some cultural and practical difficulties in applying standard labour force concepts to these communities. Operational issues include the high turnover of trained interviewers in remote areas, the seasonal fluctuations in population numbers as well as in employment opportunities, and high population mobility.

Responses in the LFS may be given by any responsible adult in each selected household. Reporting errors may arise when the respondent provides information for another member of the household without being fully aware of their labour force details. Although this is a minor issue for the survey in general, the higher mobility of Indigenous household members may affect the accurate reporting of details such as active job search or availability for work.

SAMPLING ERROR

The LFS estimates are based on information obtained from a sample of the population, and are subject to sampling error. Sampling error is the difference between the estimate obtained from a particular sample and the value that would have been obtained if the whole population were enumerated under the same procedures (referred to as the 'population value').

Standard error

The most commonly used measure of sampling error is the standard error (SE). This measure indicates the extent to which a survey estimate is likely to deviate from the true population value by chance. There are about two chances in three (67%) that the sample estimate will differ by less than one standard error from the estimates that would have been obtained if all dwellings had been included in the survey, and about nineteen chances in twenty (95%) that the difference will be less than two standard errors.

The magnitude of the sampling error depends on the sample design, the sample size and the population variability. The larger the sample on which the estimates are based, the smaller the sampling error. The main contribution to sampling error for the Indigenous labour force estimates is the sample size.

APPENDIX 3 TECHNICAL NOTE *continued*

Standard error continued

Movements in the level of an estimate are also subject to sampling variability. The standard error of the movement depends on the levels of the estimates from which the movement is obtained rather than the size of the movement.

The standard errors for level estimates are shown in the tables (L1 to L5) of Appendix 4: Standard errors. The standard errors of movements between annual estimates are shown in the tables (M1 to M5) of Appendix 5: Movement standard errors. The standard errors have been derived using the group jack-knife method.

Relative standard error

Another measure of sampling error is the relative standard error, which is obtained by expressing the standard error as a percentage of the estimate to which it refers. The smaller the sample estimate, the higher the relative standard error. The small sample size of Indigenous persons results in estimates of labour force characteristics which are considerably less precise and less stable than comparable aggregate estimates for non-Indigenous persons. This is reflected in the relatively high standard errors for the survey estimates derived for Indigenous persons.

Very small estimates are subject to such high standard errors, relative to the size of the estimate, as to detract seriously from their value for most reasonable uses. In the tables in this publication, only estimates with relative standard errors of less than 25%, are considered sufficiently reliable for most purposes. Accordingly, while included in the tables, estimates with relative standard errors of 25% or more are preceded by an asterisk (e.g. *3.4), to indicate they are subject to high standard errors and should be used with caution.

Proportions and percentages (for example, unemployment rates) formed from the ratio of two estimates are also subject to sampling error. The size of the error depends on the accuracy of both the numerator and the denominator. A formula to approximate the RSE of a proportion or percentage is:

$$RSE(x/y) = \sqrt{[RSE(x)]^2 + [RSE(y)]^2}$$

This formula is only valid when x is a subset of y.

EXAMPLES OF CALCULATIONS

Level standard errors

As an example of the calculation and use of standard errors, consider the estimate of 161,200 Indigenous persons employed in 2009. The standard error for this estimate is 8,800 (see Table L1). This indicates that there is a 67% chance that the true value (the number that would have been obtained if the whole population had been included in the survey) is within the range 152,400 to 170,000 (that is, 161,200 + or – 8,800). There is a 95% chance that the true value is in the range 143,600 to 178,800 (that is, 161,200 + or – 17,600).

Movement standard errors

Standard errors can also be used to interpret the reliability of annual movement estimates. For example, in 2008 there were an estimated 91,200 Indigenous males in employment, decreasing to 89,100 in 2009 (a movement of -2,100). The associated standard error for the movement estimate is 4,900 (see Table M1). This indicates that there is a 67% chance that the true value of the movement is within the range -7,000 to 2,800 (that is, -2,100 + or – 4,900) and there is a 95% chance that the true value is in the range -11,900 to 7,700 (that is, -2,100 + or – 9,800).

Differences between estimates

Published estimates may also be used to calculate the difference between two survey estimates (numbers or percentages). Such an estimate is subject to sampling error. The sampling error of the difference between two estimates depends on their SEs and the relationship (correlation) between them. An approximate SE of the difference between two estimates (x–y) may be calculated by the following formula:

$$SE(x-y) = \sqrt{[SE(x)]^2 + [SE(y)]^2}$$

APPENDIX 3 TECHNICAL NOTE *continued*

Differences between estimates continued

While this formula will only be exact for differences between separate and uncorrelated characteristics or sub-populations, it is expected to provide a good approximation for all differences likely to be of interest in this publication.

For example, in 2009, the participation rate of Indigenous males was 62.8%, 14.3 percentage points higher than the rate of 48.5% for Indigenous females. The approximate standard error of the difference between these two estimates can be calculated as follows:

$$\begin{aligned} SE(x-y) &= \sqrt{[SE(x)]^2 + [SE(y)]^2} \\ &= \sqrt{[2.5]^2 + [2.7]^2} \\ &= 3.7 \end{aligned}$$

APPENDIX 4 STANDARD ERRORS

L1 - STANDARD ERRORS FOR INDIGENOUS PERSONS AGED 15 YEARS AND OVER, Labour force status by remoteness—2005 to 2009

	Total employed	Total unemployed	Labour force	Not in labour force	Civilian population aged 15 years and over	Unemployment rate	Participation rate	Employment to population ratio
	'000	'000	'000	'000	'000	pts	pts	pts
MALES								
2005								
Major cities	1.5	0.6	1.2	1.2	—	2.0	2.6	3.1
Regional areas	2.5	1.5	2.2	2.8	2.7	3.6	3.5	4.2
Remote areas	2.5	0.8	2.8	2.3	2.7	3.0	5.4	4.7
<i>Australia</i>	4.2	1.4	3.8	3.8	—	1.6	2.5	2.7
2006								
Major cities	1.3	0.7	1.5	1.5	—	1.6	3.0	2.7
Regional areas	2.0	0.7	1.9	1.9	0.5	1.9	2.8	3.0
Remote areas	2.6	0.6	2.4	2.4	0.5	2.8	6.0	6.5
<i>Australia</i>	3.4	1.1	3.4	3.4	—	1.0	2.2	2.1
2007								
Major cities	1.6	0.5	1.3	1.3	—	1.8	2.5	3.1
Regional areas	1.8	1.1	2.0	1.9	0.5	2.1	2.7	2.5
Remote areas	2.0	0.5	2.1	1.9	0.5	1.9	4.8	4.6
<i>Australia</i>	3.0	1.4	2.7	2.7	—	1.4	1.7	1.8
2008								
Major cities	1.4	0.7	1.5	1.5	—	1.8	2.7	2.6
Regional areas	1.9	1.1	1.6	1.6	0.5	2.6	2.1	2.5
Remote areas	1.8	0.4	1.9	1.8	0.5	1.9	4.4	4.4
<i>Australia</i>	3.1	1.5	3.0	3.0	—	1.4	1.8	1.8
2009								
Major cities	2.2	1.0	2.1	2.1	—	2.7	3.7	4.0
Regional areas	3.1	2.2	3.4	2.1	3.5	3.6	2.5	3.1
Remote areas	3.5	0.6	3.9	3.1	3.5	2.7	9.0	8.4
<i>Australia</i>	4.9	2.2	4.4	4.4	—	2.1	2.5	2.8
FEMALES								
2005								
Major cities	1.4	0.6	1.2	1.2	—	2.3	2.3	2.6
Regional areas	2.2	1.0	2.2	2.2	0.5	3.3	3.3	3.4
Remote areas	3.2	0.3	3.1	3.0	0.5	3.2	7.4	7.7
<i>Australia</i>	3.3	1.3	3.6	3.6	—	1.5	2.3	2.1
2006								
Major cities	1.5	0.4	1.5	1.5	—	1.5	2.8	2.9
Regional areas	2.0	0.7	1.8	1.8	0.6	2.3	2.6	2.9
Remote areas	3.5	0.4	3.4	3.3	0.6	3.2	7.8	8.1
<i>Australia</i>	3.8	0.8	3.9	3.9	—	1.0	2.4	2.3
2007								
Major cities	1.5	0.7	1.5	1.5	—	2.4	2.7	2.7
Regional areas	1.7	0.8	1.6	1.5	0.4	2.4	2.1	2.4
Remote areas	2.3	0.3	2.4	2.4	0.4	1.6	5.5	5.3
<i>Australia</i>	3.6	1.2	3.6	3.6	—	1.5	2.1	2.1
2008								
Major cities	2.2	0.6	1.9	1.9	—	2.6	3.3	3.8
Regional areas	2.0	0.9	1.7	1.7	0.3	2.9	2.3	2.6
Remote areas	2.0	0.7	1.8	1.8	0.3	3.7	4.2	4.8
<i>Australia</i>	3.6	1.5	3.2	3.2	—	1.9	1.8	2.0

— nil or rounded to zero (including null cells)

APPENDIX 4 STANDARD ERRORS *continued*

L1 - STANDARD ERRORS FOR INDIGENOUS PERSONS AGED 15 YEARS AND OVER, Labour force status by remoteness—2005 to 2009 *continued*

	Total employed	Total unemployed	Labour force	Not in labour force	Civilian population aged 15 years and over	Unemployment rate	Participation rate	Employment to population ratio
	'000	'000	'000	'000	'000	pts	pts	pts
FEMALES <i>cont.</i>								
2009								
Major cities	2.1	1.5	1.4	1.4	—	4.8	2.4	3.6
Regional areas	2.7	0.6	2.7	2.3	0.8	2.3	3.2	3.3
Remote areas	3.2	0.7	3.8	3.7	0.8	1.8	8.6	7.3
Australia	5.2	1.8	4.8	4.8	—	2.3	2.7	2.9
PERSONS								
2005								
Major cities	2.3	0.9	1.8	1.8	—	1.6	1.8	2.3
Regional areas	4.1	2.0	3.8	4.0	2.8	2.8	2.8	3.2
Remote areas	5.0	1.0	4.9	4.4	2.8	3.0	5.5	5.6
Australia	6.0	2.2	6.1	6.1	—	1.3	2.0	1.9
2006								
Major cities	2.1	0.7	2.3	2.3	—	0.9	2.2	2.0
Regional areas	3.2	1.2	2.8	2.8	1.1	1.7	2.0	2.3
Remote areas	5.9	0.8	5.5	5.4	1.1	2.7	6.6	7.1
Australia	6.7	1.4	6.6	6.6	—	0.8	2.1	2.1
2007								
Major cities	2.7	0.9	2.3	2.3	—	1.6	2.2	2.5
Regional areas	2.5	1.3	2.5	2.4	0.8	1.5	1.7	1.7
Remote areas	4.0	0.7	4.2	4.1	0.8	1.6	4.9	4.7
Australia	5.4	1.8	5.4	5.4	—	1.0	1.6	1.6
2008								
Major cities	2.9	0.9	2.8	2.8	—	1.4	2.5	2.6
Regional areas	3.0	1.4	2.5	2.5	0.7	1.9	1.6	2.0
Remote areas	3.5	1.1	3.4	3.3	0.7	2.5	4.1	4.2
Australia	5.8	2.1	5.5	5.5	—	1.2	1.6	1.7
2009								
Major cities	3.2	1.9	2.4	2.4	—	2.8	2.1	2.8
Regional areas	5.0	2.3	4.7	3.8	3.5	2.7	2.4	2.8
Remote areas	5.1	0.8	5.7	6.5	3.5	1.2	7.5	6.7
Australia	8.8	3.6	8.0	8.0	—	2.0	2.3	2.5

— nil or rounded to zero (including null cells)

APPENDIX 4 STANDARD ERRORS *continued*

L2 - STANDARD ERRORS FOR INDIGENOUS PERSONS AGED 15 YEARS AND OVER, Labour force status by age groups—2005 to 2009

	Total employed	Total unemployed	Labour force	Not in labour force	Civilian population aged 15 years and over	Unemployment rate	Participation rate	Employment to population ratio
	'000	'000	'000	'000	'000	pts	pts	pts
MALES								
2005								
15 to 24 years	1.2	0.8	1.3	1.3	—	2.5	2.7	2.5
25 to 44 years	2.2	1.1	1.6	1.3	0.7	2.3	2.2	3.1
45 years or over	1.9	0.4	1.9	2.4	0.7	2.1	5.1	5.1
<i>Total</i>	4.2	1.4	3.8	3.8	—	1.6	2.5	2.7
15 to 64 years	4.2	1.3	3.9	4.0	1.1	1.5	2.7	2.9
2006								
15 to 24 years	1.7	0.6	1.7	1.7	—	2.1	3.3	3.4
25 to 44 years	1.8	0.7	1.7	1.7	0.4	1.4	2.7	2.8
45 years or over	1.8	0.6	1.8	1.7	0.4	2.4	3.9	4.1
<i>Total</i>	3.4	1.1	3.4	3.4	—	1.0	2.2	2.1
15 to 64 years	3.2	1.0	3.3	3.3	1.1	1.0	2.1	2.1
2007								
15 to 24 years	1.4	1.0	1.3	1.3	—	2.8	2.4	2.6
25 to 44 years	1.4	0.7	1.4	1.3	0.1	1.4	2.0	2.1
45 years or over	1.6	0.3	1.6	1.6	0.1	1.4	3.6	3.5
<i>Total</i>	3.0	1.4	2.7	2.7	—	1.4	1.7	1.8
15 to 64 years	3.0	1.4	2.7	2.6	1.1	1.4	1.7	1.8
2008								
15 to 24 years	1.3	1.0	1.2	1.2	0.2	3.0	2.2	2.4
25 to 44 years	1.8	0.6	1.9	1.9	0.3	1.2	2.8	2.7
45 years or over	2.8	0.5	2.8	2.9	0.3	1.9	6.2	6.0
<i>Total</i>	3.1	1.5	3.0	3.0	—	1.4	1.8	1.8
15 to 64 years	3.1	1.5	3.0	2.7	1.3	1.4	1.7	1.7
2009								
15 to 24 years	2.1	1.5	1.9	1.9	—	4.5	3.3	3.7
25 to 44 years	2.8	1.3	2.6	2.5	0.6	2.7	3.8	4.1
45 years or over	2.1	0.4	2.0	2.2	0.6	1.6	4.2	4.3
<i>Total</i>	4.9	2.2	4.4	4.4	—	2.1	2.5	2.8
15 to 64 years	4.9	2.2	4.4	4.3	1.5	2.1	2.6	2.8

— nil or rounded to zero (including null cells)

APPENDIX 4 STANDARD ERRORS *continued*

L2 - STANDARD ERRORS FOR INDIGENOUS PERSONS AGED 15 YEARS AND OVER, Labour force status by age groups—2005 to 2009 *continued*

	Total employed	Total unemployed	Labour force	Not in labour force	Civilian population aged 15 years and over	Unemployment rate	Participation rate	Employment to population ratio
	'000	'000	'000	'000	'000	pts	pts	pts
FEMALES								
2005								
15 to 24 years	1.6	0.8	1.4	1.5	0.3	3.6	3.1	3.5
25 to 44 years	2.0	0.5	2.2	2.1	0.6	1.2	3.1	2.8
45 years or over	1.3	0.4	1.3	1.3	0.6	2.2	2.8	2.8
<i>Total</i>	3.3	1.3	3.6	3.6	—	1.5	2.3	2.1
15 to 64 years	3.1	1.2	3.4	3.8	1.0	1.5	2.3	2.1
2006								
15 to 24 years	1.5	0.6	1.3	1.3	—	2.9	2.7	3.0
25 to 44 years	2.4	0.6	2.6	2.3	1.0	1.6	3.5	3.3
45 years or over	1.5	0.2	1.5	1.4	1.0	1.1	2.9	2.8
<i>Total</i>	3.8	0.8	3.9	3.9	—	1.0	2.4	2.3
15 to 64 years	3.6	0.8	3.8	3.3	0.9	1.0	2.3	2.2
2007								
15 to 24 years	1.6	0.7	1.5	1.5	—	3.0	2.9	3.1
25 to 44 years	2.2	0.8	2.0	2.0	—	2.2	3.0	3.1
45 years or over	1.6	0.3	1.6	1.6	—	1.6	3.2	3.2
<i>Total</i>	3.6	1.2	3.6	3.6	—	1.5	2.1	2.1
15 to 64 years	3.6	1.2	3.6	3.3	1.2	1.5	2.1	2.1
2008								
15 to 24 years	1.4	0.8	1.2	1.2	0.5	3.3	2.3	2.7
25 to 44 years	2.0	1.0	2.0	2.1	0.7	2.5	2.9	2.9
45 years or over	1.8	0.6	2.0	1.8	0.6	2.4	3.6	3.3
<i>Total</i>	3.6	1.5	3.2	3.2	—	1.9	1.8	2.0
15 to 64 years	3.7	1.5	3.3	3.4	1.4	1.9	2.0	2.2
2009								
15 to 24 years	2.7	0.9	2.4	2.4	—	4.7	4.4	4.9
25 to 44 years	2.8	1.0	3.0	1.8	2.7	2.4	2.8	2.9
45 years or over	2.5	0.8	2.4	2.5	2.7	3.7	3.8	4.0
<i>Total</i>	5.2	1.8	4.8	4.8	—	2.3	2.7	2.9
15 to 64 years	5.3	1.8	5.0	4.3	1.7	2.3	2.7	2.9

— nil or rounded to zero (including null cells)

APPENDIX 4 STANDARD ERRORS *continued*

L2 - STANDARD ERRORS FOR INDIGENOUS PERSONS AGED 15 YEARS AND OVER, Labour force status by age groups—2005 to 2009 *continued*

	Total employed	Total unemployed	Labour force	Not in labour force	Civilian population aged 15 years and over	Unemployment rate	Participation rate	Employment to population ratio
	'000	'000	'000	'000	'000	pts	pts	pts
PERSONS								
2005								
15 to 24 years	2.4	1.3	2.3	2.3	0.3	2.5	2.4	2.5
25 to 44 years	2.9	1.3	2.9	2.6	0.7	1.5	2.1	2.1
45 years or over	2.3	0.6	2.4	2.5	0.6	1.5	2.8	2.7
Total	6.0	2.2	6.1	6.1	—	1.3	2.0	1.9
15 to 64 years	5.8	2.2	5.9	6.5	1.3	1.2	2.1	2.1
2006								
15 to 24 years	2.7	0.9	2.5	2.5	—	1.9	2.5	2.7
25 to 44 years	3.4	1.0	3.7	3.4	1.1	1.1	2.7	2.5
45 years or over	2.7	0.6	2.6	2.5	1.1	1.4	2.7	2.9
Total	6.7	1.4	6.6	6.6	—	0.8	2.1	2.1
15 to 64 years	6.3	1.3	6.3	6.0	1.5	0.8	2.0	2.0
2007								
15 to 24 years	1.9	1.1	2.1	2.1	—	1.8	2.0	1.8
25 to 44 years	2.8	1.1	2.6	2.5	0.1	1.3	1.9	2.1
45 years or over	2.4	0.4	2.4	2.4	0.1	1.0	2.5	2.6
Total	5.4	1.8	5.4	5.4	—	1.0	1.6	1.6
15 to 64 years	5.4	1.8	5.4	4.9	1.8	1.0	1.6	1.6
2008								
15 to 24 years	1.8	1.4	1.8	1.9	0.6	2.2	1.7	1.7
25 to 44 years	3.0	1.1	3.1	3.1	0.8	1.2	2.3	2.1
45 years or over	4.0	0.7	4.2	3.8	0.6	1.6	4.0	3.9
Total	5.8	2.1	5.5	5.5	—	1.2	1.6	1.7
15 to 64 years	5.8	2.1	5.6	5.3	1.6	1.2	1.6	1.7
2009								
15 to 24 years	4.2	1.9	3.7	3.7	—	3.8	3.3	3.7
25 to 44 years	3.9	1.8	4.2	3.7	2.8	1.8	2.6	2.7
45 years or over	3.5	0.9	3.3	3.5	2.8	2.0	3.0	3.3
Total	8.8	3.6	8.0	8.0	—	2.0	2.3	2.5
15 to 64 years	8.9	3.6	8.1	7.5	2.5	2.0	2.3	2.5

— nil or rounded to zero (including null cells)

APPENDIX 4 STANDARD ERRORS *continued*

L3 - STANDARD ERRORS FOR INDIGENOUS PERSONS AGED 15 YEARS AND OVER, Labour force status by state and territory—2005 to 2009

	Total employed	Total unemployed	Labour force	Not in labour force	Civilian population aged 15 years and over	Unemployment rate	Participation rate	Employment to population ratio	Civilian population living in Remote areas
	'000	'000	'000	'000	'000	pts	pts	pts	pts
NEW SOUTH WALES									
2005	3.8	1.1	3.9	3.9	—	2.2	4.2	4.1	1.2
2006	3.0	0.8	3.0	3.0	—	1.6	3.2	3.2	1.1
2007	2.2	1.2	2.3	2.3	—	2.1	2.4	2.3	0.7
2008	3.0	1.0	2.6	2.6	—	2.4	2.6	3.0	0.7
2009	2.7	1.7	2.7	2.7	—	2.9	2.6	2.7	1.4
VICTORIA									
2005	1.2	0.6	0.9	0.9	—	5.4	4.5	5.7	—
2006	1.1	0.3	1.0	1.0	—	2.7	4.7	5.3	—
2007	1.2	0.4	1.1	1.1	—	3.8	5.0	5.5	—
2008	0.9	0.6	0.9	0.9	—	4.3	4.1	4.1	—
2009	2.0	0.7	1.8	1.8	—	6.4	7.6	8.6	—
QUEENSLAND									
2005	4.1	1.0	4.1	4.1	—	2.1	4.8	4.8	—
2006	4.7	0.7	4.3	4.3	—	2.0	4.9	5.3	—
2007	3.0	0.6	3.2	3.2	—	1.0	3.5	3.3	—
2008	3.9	1.2	3.4	3.4	—	2.4	3.6	4.1	—
2009	4.8	2.2	4.5	4.5	—	3.6	4.6	4.8	3.5
SOUTH AUSTRALIA									
2005	0.8	0.3	1.0	1.0	—	2.8	5.6	4.9	15.1
2006	1.6	0.5	1.5	1.5	—	5.1	8.6	9.2	—
2007	0.9	0.4	0.8	0.8	—	4.8	4.1	4.9	—
2008	0.8	0.5	1.0	1.0	—	4.6	5.5	4.5	—
2009	1.4	0.2	1.3	1.3	—	3.1	6.6	7.0	—
WESTERN AUSTRALIA									
2005	1.5	0.8	1.2	1.2	—	3.4	2.7	3.5	—
2006	1.6	0.5	1.5	1.5	—	1.9	3.4	3.5	—
2007	2.5	0.7	3.0	3.0	—	2.1	6.5	5.4	—
2008	2.7	0.4	2.9	2.9	—	1.6	6.0	5.7	—
2009	4.7	0.8	5.2	5.2	—	3.1	10.7	9.6	—
TASMANIA									
2005	0.4	0.3	0.4	0.4	—	3.4	3.2	3.6	4.0
2006	0.5	0.1	0.5	0.5	—	2.0	4.3	4.2	0.7
2007	0.4	0.1	0.4	0.4	—	1.9	3.3	3.6	2.8
2008	0.5	0.2	0.4	0.4	—	2.6	3.5	4.0	1.0
2009	0.6	0.1	0.6	0.6	—	1.5	4.4	4.6	0.6
NORTHERN TERRITORY									
2005	1.8	0.5	1.8	1.8	—	3.4	4.4	4.4	—
2006	2.4	0.5	2.5	2.5	—	2.8	5.9	5.7	—
2007	1.9	0.5	1.7	1.7	—	2.9	4.1	4.6	—
2008	1.5	0.5	1.6	1.6	—	2.1	3.6	3.4	—
2009	1.9	0.4	2.2	2.2	—	1.5	4.8	4.2	—

— nil or rounded to zero (including null cells)

APPENDIX 4 STANDARD ERRORS *continued*

L3 - STANDARD ERRORS FOR INDIGENOUS PERSONS AGED 15 YEARS AND OVER, Labour force status by state and territory—2005 to 2009 *continued*

	Total employed	Total unemployed	Labour force	Not in labour force	Civilian population aged 15 years and over	Unemployment rate	Participation rate	Employment to population ratio	Civilian population living in Remote areas
	'000	'000	'000	'000	'000	pts	pts	pts	pts
AUSTRALIAN CAPITAL TERRITORY									
2005	0.1	—	0.1	0.1	—	2.3	4.1	4.1	—
2006	0.2	0.1	0.2	0.2	—	4.7	6.6	6.7	—
2007	0.2	0.1	0.2	0.2	—	4.0	8.6	7.8	—
2008	0.4	0.1	0.3	0.3	—	4.2	11.1	12.4	—
2009	0.2	0.2	0.3	0.3	—	8.0	9.4	8.2	—

— nil or rounded to zero (including null cells)

APPENDIX 4 STANDARD ERRORS *continued*

L4 - STANDARD ERRORS FOR INDIGENOUS PERSONS AGED 15 TO 64 YEARS, Labour force status by remoteness—2005 to 2009

	Total employed	Total unemployed	Labour force	Not in labour force	Civilian population aged 15 to 64 years	Unemployment rate	Participation rate	Employment to population ratio
	'000	'000	'000	'000	'000	pts	pts	pts
MALES								
2005								
Major cities	1.5	0.6	1.2	1.2	0.5	2.0	2.5	3.0
Regional areas	2.5	1.4	2.2	2.9	2.9	3.5	3.8	4.5
Remote areas	2.5	0.8	2.8	2.4	2.6	3.0	6.0	5.2
<i>Australia</i>	4.2	1.3	3.9	4.0	1.1	1.5	2.7	2.9
2006								
Major cities	1.3	0.7	1.5	1.3	0.8	1.6	2.8	2.7
Regional areas	2.0	0.7	1.8	1.9	0.8	1.9	2.7	3.0
Remote areas	2.5	0.6	2.3	2.3	0.7	2.7	6.0	6.6
<i>Australia</i>	3.2	1.0	3.3	3.3	1.1	1.0	2.1	2.1
2007								
Major cities	1.6	0.5	1.3	1.2	0.5	1.8	2.5	3.1
Regional areas	1.8	1.1	1.9	1.8	0.9	2.1	2.7	2.6
Remote areas	2.0	0.5	2.1	1.8	0.7	1.9	4.7	4.4
<i>Australia</i>	3.0	1.4	2.7	2.6	1.1	1.4	1.7	1.8
2008								
Major cities	1.4	0.7	1.5	1.3	0.5	1.8	2.5	2.5
Regional areas	1.9	1.1	1.6	1.4	1.0	2.6	2.0	2.4
Remote areas	1.8	0.4	1.9	1.8	0.9	1.9	4.5	4.3
<i>Australia</i>	3.1	1.5	3.0	2.7	1.3	1.4	1.7	1.7
2009								
Major cities	2.2	1.0	2.1	1.7	1.3	2.8	3.2	3.5
Regional areas	3.2	2.2	3.5	2.2	3.4	3.6	2.6	3.4
Remote areas	3.5	0.6	3.9	3.0	3.0	2.7	9.6	8.9
<i>Australia</i>	4.9	2.2	4.4	4.3	1.5	2.1	2.6	2.8
FEMALES								
2005								
Major cities	1.3	0.6	1.2	1.4	0.5	2.3	2.6	2.9
Regional areas	2.2	1.0	2.2	2.3	0.9	3.2	3.5	3.5
Remote areas	2.8	0.3	2.7	2.8	0.4	3.1	7.0	7.2
<i>Australia</i>	3.1	1.2	3.4	3.8	1.0	1.5	2.3	2.1
2006								
Major cities	1.6	0.4	1.5	1.5	0.6	1.5	2.9	2.9
Regional areas	2.0	0.7	1.8	1.9	0.9	2.4	2.8	3.0
Remote areas	3.3	0.4	3.2	2.7	0.9	3.1	7.3	7.7
<i>Australia</i>	3.6	0.8	3.8	3.3	0.9	1.0	2.3	2.2
2007								
Major cities	1.5	0.7	1.5	1.6	0.4	2.4	2.9	2.8
Regional areas	1.7	0.8	1.5	1.9	1.0	2.4	2.4	2.6
Remote areas	2.3	0.3	2.4	2.2	0.7	1.6	5.5	5.3
<i>Australia</i>	3.6	1.2	3.6	3.3	1.2	1.5	2.1	2.1
2008								
Major cities	2.2	0.6	1.9	1.9	0.8	2.7	3.4	3.9
Regional areas	2.0	0.9	1.7	1.7	0.9	2.9	2.3	2.7
Remote areas	2.0	0.7	1.8	2.3	0.9	3.7	5.1	5.8
<i>Australia</i>	3.7	1.5	3.3	3.4	1.4	1.9	2.0	2.2

APPENDIX 4 STANDARD ERRORS *continued*

L4 - STANDARD ERRORS FOR INDIGENOUS PERSONS AGED 15 TO 64 YEARS, Labour force status by remoteness—2005 to 2009 *continued*

	Total employed	Total unemployed	Labour force	Not in labour force	Civilian population aged 15 to 64 years	Unemployment rate	Participation rate	Employment to population ratio
	'000	'000	'000	'000	'000	pts	pts	pts
FEMALES <i>cont.</i>								
2009								
Major cities	2.1	1.5	1.4	1.4	0.6	4.8	2.5	3.8
Regional areas	2.7	0.6	2.7	2.3	1.2	2.3	3.3	3.4
Remote areas	3.5	0.7	4.1	3.2	1.7	1.8	8.5	7.2
Australia	5.3	1.8	5.0	4.3	1.7	2.3	2.7	2.9
PERSONS								
2005								
Major cities	2.2	0.9	1.7	2.0	0.7	1.6	1.9	2.4
Regional areas	4.1	2.0	3.9	4.0	3.1	2.8	3.0	3.3
Remote areas	4.6	1.0	4.6	4.4	2.6	2.9	5.6	5.6
Australia	5.8	2.2	5.9	6.5	1.3	1.2	2.1	2.1
2006								
Major cities	2.0	0.7	2.3	2.2	0.9	0.9	2.2	2.0
Regional areas	3.2	1.1	2.8	3.0	1.5	1.7	2.2	2.4
Remote areas	5.5	0.8	5.2	4.8	1.4	2.6	6.3	6.8
Australia	6.3	1.3	6.3	6.0	1.5	0.8	2.0	2.0
2007								
Major cities	2.6	0.9	2.3	2.4	0.7	1.6	2.3	2.5
Regional areas	2.5	1.3	2.5	2.9	1.6	1.5	2.0	1.9
Remote areas	4.0	0.7	4.2	3.7	1.2	1.6	4.8	4.6
Australia	5.4	1.8	5.4	4.9	1.8	1.0	1.6	1.6
2008								
Major cities	2.9	0.9	2.8	2.6	0.9	1.4	2.5	2.6
Regional areas	3.0	1.4	2.5	2.4	1.3	1.9	1.7	2.1
Remote areas	3.5	1.1	3.4	3.3	0.9	2.5	4.2	4.3
Australia	5.8	2.1	5.6	5.3	1.6	1.2	1.6	1.7
2009								
Major cities	3.2	1.9	2.4	2.3	1.3	2.8	2.0	2.7
Regional areas	5.0	2.3	4.7	3.6	3.2	2.7	2.5	3.0
Remote areas	5.0	0.8	5.7	5.9	1.9	1.2	7.7	6.9
Australia	8.9	3.6	8.1	7.5	2.5	2.0	2.3	2.5

APPENDIX 4 STANDARD ERRORS *continued*

L5 - STANDARD ERRORS FOR PROPORTIONS OF INDIGENOUS POPULATIONS AGED 15 YEARS AND OVER, Labour force status by remoteness—2005 to 2009

		2005	2006	2007	2008	2009
EMPLOYED						
Major cities	pts	1.8	1.6	1.4	1.5	1.6
Regional areas	pts	2.3	2.0	1.6	1.6	2.0
Remote areas	pts	2.9	2.9	2.0	1.6	2.6
Australia	'000	6.0	6.7	5.4	5.8	8.8
UNEMPLOYED						
Major cities	pts	3.2	2.7	2.7	3.2	3.4
Regional areas	pts	4.3	3.0	3.2	3.4	3.3
Remote areas	pts	3.8	2.9	2.5	3.3	2.2
Australia	'000	2.2	1.4	1.8	2.1	3.6
LABOUR FORCE						
Major cities	pts	1.3	1.4	1.0	1.1	1.5
Regional areas	pts	1.8	1.6	1.4	1.3	1.6
Remote areas	pts	2.4	2.3	1.8	1.4	2.4
Australia	'000	6.1	6.6	5.4	5.5	8.0
NOT IN LABOUR FORCE						
Major cities	pts	1.4	1.7	1.3	1.4	1.8
Regional areas	pts	2.1	2.1	1.7	1.8	2.3
Remote areas	pts	2.7	3.0	2.2	1.6	3.3
Australia	'000	6.1	6.6	5.4	5.5	8.0
CIVILIAN POPULATION AGED 15 YEARS AND OVER						
Major cities	pts	—	—	—	—	—
Regional areas	pts	0.9	0.3	0.2	0.2	1.0
Remote areas	pts	0.9	0.3	0.2	0.2	1.0
Australia	'000	—	—	—	—	—

— nil or rounded to zero (including null cells)

APPENDIX 5 MOVEMENT STANDARD ERRORS

M1 - MOVEMENT STANDARD ERRORS FOR INDIGENOUS PERSONS AGED 15 YEARS AND OVER, Labour force status by remoteness—2005 to 2009

	Total employed	Total unemployed	Labour force	Not in labour force	Civilian population aged 15 years and over	Unemployment rate	Participation rate	Employment to population ratio
	'000	'000	'000	'000	'000	pts	pts	pts
MALES								
2005 to 2006								
Major cities	1.7	1.0	1.6	1.6	—	2.8	3.3	3.4
Regional areas	2.6	1.5	2.7	2.6	2.7	3.3	3.5	3.5
Remote areas	3.3	0.9	3.5	2.9	2.7	3.4	7.3	7.2
<i>Australia</i>	4.0	1.9	3.4	3.4	—	2.0	2.2	2.6
2006 to 2007								
Major cities	2.3	0.8	2.3	2.3	—	2.3	4.5	4.4
Regional areas	1.9	1.4	2.0	2.0	0.2	2.9	2.9	2.9
Remote areas	1.6	0.8	1.6	1.6	0.2	3.0	4.0	3.9
<i>Australia</i>	3.1	1.9	3.7	3.7	—	1.6	2.3	2.0
2007 to 2008								
Major cities	2.1	0.7	2.0	2.0	—	2.0	3.9	4.0
Regional areas	2.3	1.7	2.5	2.6	0.4	3.4	3.6	3.3
Remote areas	2.5	0.7	2.7	2.8	0.4	2.6	6.7	6.2
<i>Australia</i>	4.6	1.8	4.8	4.8	—	1.6	2.9	2.8
2008 to 2009								
Major cities	2.4	1.0	2.3	2.3	—	2.8	4.2	4.3
Regional areas	3.8	1.6	3.8	3.1	3.5	3.0	3.6	4.3
Remote areas	1.9	0.7	2.3	2.7	3.5	3.4	5.3	5.2
<i>Australia</i>	4.9	2.3	4.8	4.8	—	2.1	2.8	2.8
FEMALES								
2005 to 2006								
Major cities	2.0	0.7	2.0	2.0	—	2.5	3.8	3.8
Regional areas	2.7	0.9	2.3	2.4	0.4	3.2	3.5	4.1
Remote areas	1.8	0.5	1.7	1.8	0.4	2.8	4.2	4.4
<i>Australia</i>	4.3	1.3	3.8	3.8	—	1.9	2.3	2.6
2006 to 2007								
Major cities	2.2	0.6	2.0	2.0	—	2.5	3.7	4.0
Regional areas	2.2	0.9	2.0	2.2	0.6	2.9	3.0	3.3
Remote areas	2.0	0.4	1.9	1.9	0.6	2.5	4.4	4.6
<i>Australia</i>	4.1	1.2	3.8	3.8	—	1.6	2.3	2.5
2007 to 2008								
Major cities	2.4	1.0	2.5	2.5	—	3.2	4.4	4.3
Regional areas	1.8	1.1	1.9	1.9	0.4	3.0	2.7	2.5
Remote areas	3.0	0.6	2.8	2.9	0.4	3.5	6.5	7.2
<i>Australia</i>	4.1	1.6	4.0	4.0	—	2.0	2.3	2.4
2008 to 2009								
Major cities	2.6	1.6	2.4	2.4	—	4.9	4.1	4.5
Regional areas	2.8	1.2	2.6	2.7	0.7	3.5	3.4	3.6
Remote areas	4.7	0.6	4.8	4.8	0.7	3.4	11.0	10.9
<i>Australia</i>	5.6	1.9	5.6	5.6	—	2.3	3.1	3.1

— nil or rounded to zero (including null cells)

APPENDIX 5 MOVEMENT STANDARD ERRORS *continued*

M1 - MOVEMENT STANDARD ERRORS FOR INDIGENOUS PERSONS AGED 15 YEARS AND OVER, Labour force status by remoteness—2005 to 2009 *continued*

	Total employed	Total unemployed	Labour force	Not in labour force	Civilian population aged 15 years and over	Unemployment rate	Participation rate	Employment to population ratio
	'000	'000	'000	'000	'000	pts	pts	pts
PERSONS								
2005 to 2006								
Major cities	2.9	1.4	2.4	2.4	—	2.3	2.3	2.8
Regional areas	4.3	1.8	3.8	3.4	2.6	2.7	2.5	3.0
Remote areas	4.1	1.2	4.2	3.7	2.6	2.6	4.6	4.5
Australia	7.1	2.6	5.8	5.8	—	1.6	1.8	2.2
2006 to 2007								
Major cities	2.6	0.8	2.5	2.5	—	1.4	2.4	2.5
Regional areas	3.3	1.8	2.9	2.9	0.7	2.3	2.1	2.5
Remote areas	3.4	1.1	3.3	3.2	0.7	2.5	3.9	4.0
Australia	5.9	2.3	5.9	5.9	—	1.2	1.8	1.8
2007 to 2008								
Major cities	3.7	1.1	3.7	3.7	—	1.8	3.4	3.4
Regional areas	3.3	1.7	3.4	3.4	0.7	2.0	2.4	2.3
Remote areas	5.1	1.1	5.0	5.1	0.7	2.7	6.1	6.1
Australia	7.8	2.4	7.8	7.8	—	1.3	2.3	2.3
2008 to 2009								
Major cities	3.5	2.0	3.2	3.2	—	2.8	2.8	3.1
Regional areas	5.4	2.3	4.9	4.7	3.6	2.9	2.8	3.4
Remote areas	4.8	1.2	4.8	7.2	3.6	2.8	7.5	7.4
Australia	8.9	3.3	8.8	8.8	—	1.7	2.5	2.5

— nil or rounded to zero (including null cells)

APPENDIX 5 MOVEMENT STANDARD ERRORS *continued*

M2 - MOVEMENT STANDARD ERRORS FOR INDIGENOUS PERSONS AGED 15 YEARS AND OVER, Labour force status by age groups—2005 to 2009

	Total employed	Total unemployed	Labour force	Not in labour force	Civilian population aged 15 years and over	Unemployment rate	Participation rate	Employment to population ratio
	'000	'000	'000	'000	'000	pts	pts	pts
MALES								
2005 to 2006								
15 to 24 years	1.9	1.4	2.3	2.3	—	4.0	4.5	3.8
25 to 44 years	2.1	1.0	1.7	1.6	0.7	2.1	2.6	3.1
45 years or over	2.4	0.7	2.3	2.5	0.7	3.3	5.6	6.0
Total	4.0	1.9	3.4	3.4	—	2.0	2.2	2.6
15 to 64 years	3.9	1.9	3.4	3.5	1.3	2.0	2.3	2.7
2006 to 2007								
15 to 24 years	1.7	1.1	1.8	1.8	—	3.3	3.4	3.3
25 to 44 years	2.1	0.9	2.1	2.1	0.3	1.9	3.3	3.3
45 years or over	1.8	0.8	2.0	2.0	0.3	3.1	4.5	4.0
Total	3.1	1.9	3.7	3.7	—	1.6	2.3	2.0
15 to 64 years	3.1	2.0	3.8	3.5	1.3	1.7	2.3	2.0
2007 to 2008								
15 to 24 years	1.8	1.2	1.8	1.8	0.2	3.6	3.3	3.4
25 to 44 years	2.5	0.9	2.4	2.3	0.3	1.9	3.4	3.7
45 years or over	3.8	0.6	3.6	3.7	0.3	2.8	8.0	8.4
Total	4.6	1.8	4.8	4.8	—	1.6	2.9	2.8
15 to 64 years	4.6	1.8	4.8	4.5	1.6	1.6	2.8	2.8
2008 to 2009								
15 to 24 years	2.2	1.6	1.9	2.0	0.2	5.0	3.4	3.9
25 to 44 years	2.7	1.2	2.4	2.5	0.5	2.6	3.7	4.1
45 years or over	3.2	0.5	3.3	3.4	0.5	1.8	7.1	6.8
Total	4.9	2.3	4.8	4.8	—	2.1	2.8	2.8
15 to 64 years	4.9	2.3	4.9	4.2	2.1	2.1	2.6	2.8
FEMALES								
2005 to 2006								
15 to 24 years	1.9	0.9	1.6	1.6	0.3	4.2	3.4	4.0
25 to 44 years	2.3	0.6	2.3	2.3	1.4	1.9	3.2	3.3
45 years or over	2.1	0.4	2.1	2.0	1.4	2.2	4.1	4.0
Total	4.3	1.3	3.8	3.8	—	1.9	2.3	2.6
15 to 64 years	4.3	1.3	3.8	3.5	1.3	1.9	2.3	2.7
2006 to 2007								
15 to 24 years	1.7	0.8	1.5	1.5	—	3.6	3.0	3.5
25 to 44 years	2.4	0.8	2.3	2.3	1.0	2.2	3.3	3.4
45 years or over	2.1	0.5	2.0	2.2	1.0	2.3	4.2	4.3
Total	4.1	1.2	3.8	3.8	—	1.6	2.3	2.5
15 to 64 years	4.0	1.2	3.7	4.0	1.4	1.6	2.4	2.5
2007 to 2008								
15 to 24 years	2.1	0.9	1.9	1.9	0.5	4.1	3.7	4.1
25 to 44 years	2.4	1.1	2.3	2.6	0.8	3.0	3.5	3.5
45 years or over	2.2	0.7	2.0	2.1	0.6	3.2	4.0	4.2
Total	4.1	1.6	4.0	4.0	—	2.0	2.3	2.4
15 to 64 years	4.1	1.6	4.0	4.0	1.6	2.0	2.4	2.5

— nil or rounded to zero (including null cells)

APPENDIX 5 MOVEMENT STANDARD ERRORS *continued*

M2 - MOVEMENT STANDARD ERRORS FOR INDIGENOUS PERSONS AGED 15 YEARS AND OVER, Labour force status by age groups—2005 to 2009 *continued*

	Total employed	Total unemployed	Labour force	Not in labour force	Civilian population aged 15 years and over	Unemployment rate	Participation rate	Employment to population ratio
	'000	'000	'000	'000	'000	pts	pts	pts
FEMALES <i>cont.</i>								
2008 to 2009								
15 to 24 years	2.8	1.3	2.5	2.5	0.5	5.8	4.6	5.2
25 to 44 years	3.2	1.0	3.0	2.1	2.4	2.8	3.2	3.7
45 years or over	2.4	0.8	2.5	3.4	2.3	3.4	5.0	4.8
Total	5.6	1.9	5.6	5.6	—	2.3	3.1	3.1
15 to 64 years	5.7	1.9	5.8	5.1	1.3	2.3	3.2	3.2
PERSONS								
2005 to 2006								
15 to 24 years	3.1	1.7	2.6	2.6	0.3	3.3	2.6	3.1
25 to 44 years	3.3	1.2	3.1	3.0	1.1	1.5	2.2	2.4
45 years or over	3.6	0.8	3.3	3.3	1.1	2.2	3.7	4.0
Total	7.1	2.6	5.8	5.8	—	1.6	1.8	2.2
15 to 64 years	7.1	2.6	5.8	5.5	1.7	1.7	1.8	2.3
2006 to 2007								
15 to 24 years	2.3	1.4	2.2	2.2	—	2.4	2.2	2.3
25 to 44 years	3.9	1.1	3.8	3.8	1.1	1.4	2.8	2.9
45 years or over	2.7	0.9	2.8	2.9	1.1	2.0	3.0	2.9
Total	5.9	2.3	5.9	5.9	—	1.2	1.8	1.8
15 to 64 years	5.8	2.4	5.9	6.2	2.1	1.3	1.9	1.9
2007 to 2008								
15 to 24 years	3.3	1.6	3.2	3.3	0.6	2.7	3.1	3.1
25 to 44 years	3.6	1.5	3.6	3.6	0.8	1.7	2.6	2.6
45 years or over	4.7	0.9	4.6	4.4	0.6	2.0	4.6	4.7
Total	7.8	2.4	7.8	7.8	—	1.3	2.3	2.3
15 to 64 years	7.8	2.4	7.8	7.5	1.5	1.3	2.3	2.3
2008 to 2009								
15 to 24 years	3.7	2.1	3.1	3.1	0.5	4.0	2.7	3.3
25 to 44 years	4.1	1.6	3.8	3.8	2.4	1.9	2.6	2.9
45 years or over	4.6	1.0	4.7	6.0	2.4	1.9	5.2	5.0
Total	8.9	3.3	8.8	8.8	—	1.7	2.5	2.5
15 to 64 years	9.0	3.3	9.0	7.4	2.7	1.7	2.4	2.5

— nil or rounded to zero (including null cells)

APPENDIX 5 MOVEMENT STANDARD ERRORS *continued*

M3 - MOVEMENT STANDARD ERRORS FOR INDIGENOUS PERSONS AGED 15 YEARS AND OVER, Labour force status by state and territory—2005 to 2009

	Total employed	Total unemployed	Labour force	Not in labour force	Civilian population aged 15 years and over	Unemp- loyment rate	Partici- pation rate	Employment to population ratio	Civilian population living in Remote areas
	'000	'000	'000	'000	'000	pts	pts	pts	pts
NEW SOUTH WALES									
2005 to 2006	4.0	1.9	3.5	3.5	—	3.9	3.7	4.3	0.3
2006 to 2007	2.8	1.6	3.0	3.0	—	2.8	3.1	3.0	0.7
2007 to 2008	3.8	1.6	3.3	3.3	—	3.4	3.3	3.8	0.7
2008 to 2009	4.2	1.9	3.8	3.8	—	3.6	3.7	4.1	1.0
VICTORIA									
2005 to 2006	1.6	0.7	1.3	1.3	—	6.1	6.2	7.6	—
2006 to 2007	1.2	0.4	1.3	1.3	—	3.1	6.2	5.8	—
2007 to 2008	1.6	0.8	1.6	1.6	—	6.3	7.1	7.4	—
2008 to 2009	1.8	0.7	1.6	1.6	—	6.3	6.8	7.9	—
QUEENSLAND									
2005 to 2006	3.0	1.2	2.3	2.3	—	2.4	2.7	3.4	—
2006 to 2007	2.9	1.1	2.6	2.6	—	2.2	2.9	3.4	—
2007 to 2008	4.9	1.4	4.6	4.6	—	2.7	4.9	5.3	—
2008 to 2009	6.1	2.1	5.4	5.4	—	4.0	5.5	6.2	3.5
SOUTH AUSTRALIA									
2005 to 2006	1.4	0.6	1.2	1.2	—	6.2	6.7	8.1	15.1
2006 to 2007	1.8	0.6	1.7	1.7	—	7.0	9.5	10.2	—
2007 to 2008	1.1	0.6	1.2	1.2	—	5.5	6.2	5.8	—
2008 to 2009	1.4	0.6	1.4	1.4	—	6.1	7.1	7.1	—
WESTERN AUSTRALIA									
2005 to 2006	2.3	0.8	2.1	2.1	—	3.3	4.7	5.2	—
2006 to 2007	2.5	0.5	2.5	2.5	—	2.1	5.4	5.4	—
2007 to 2008	3.6	0.8	4.1	4.1	—	2.7	8.7	7.8	—
2008 to 2009	3.3	1.0	3.7	3.7	—	3.6	7.5	6.7	—
TASMANIA									
2005 to 2006	0.6	0.3	0.5	0.5	—	3.6	4.0	4.9	3.5
2006 to 2007	0.5	0.2	0.6	0.6	—	2.0	5.1	4.4	2.5
2007 to 2008	0.6	0.3	0.4	0.4	—	3.5	3.6	4.7	2.8
2008 to 2009	0.6	0.2	0.6	0.6	—	2.2	4.6	5.1	0.8
NORTHERN TERRITORY									
2005 to 2006	2.1	0.7	2.1	2.1	—	3.8	5.2	5.0	—
2006 to 2007	1.5	0.7	1.8	1.8	—	3.1	4.2	3.6	—
2007 to 2008	2.3	0.7	2.1	2.1	—	3.8	4.9	5.4	—
2008 to 2009	1.5	0.6	1.7	1.7	—	2.6	3.8	3.5	—
AUSTRALIAN CAPITAL TERRITORY									
2005 to 2006	0.2	0.1	0.2	0.2	—	5.2	8.5	8.4	—
2006 to 2007	0.3	0.1	0.3	0.3	—	5.5	10.9	9.8	—
2007 to 2008	0.4	0.1	0.3	0.3	—	5.3	12.2	12.2	—
2008 to 2009	0.5	0.2	0.4	0.4	—	9.4	14.3	16.7	—

— nil or rounded to zero (including null cells)

APPENDIX 5 MOVEMENT STANDARD ERRORS *continued*

M4 - MOVEMENT STANDARD ERRORS FOR INDIGENOUS PERSONS AGED 15 TO 64 YEARS, Labour force status by remoteness—2005 to 2009

	Total employed	Total unemployed	Labour force	Not in labour force	Civilian population aged 15 to 64 years	Unemployment rate	Participation rate	Employment to population ratio
	'000	'000	'000	'000	'000	pts	pts	pts
MALES								
2005 to 2006								
Major cities	1.7	1.0	1.6	1.4	0.8	2.8	3.0	3.1
Regional areas	2.6	1.5	2.7	2.5	2.7	3.3	3.5	3.6
Remote areas	3.3	0.9	3.4	2.9	2.6	3.4	7.6	7.4
<i>Australia</i>	3.9	1.9	3.4	3.5	1.3	2.0	2.3	2.7
2006 to 2007								
Major cities	2.2	0.8	2.3	2.4	0.9	2.3	4.7	4.5
Regional areas	1.9	1.5	2.0	1.9	0.9	3.0	2.8	2.9
Remote areas	1.5	0.8	1.6	1.7	0.7	3.0	4.2	4.1
<i>Australia</i>	3.1	2.0	3.8	3.5	1.3	1.7	2.3	2.0
2007 to 2008								
Major cities	2.1	0.7	2.0	2.0	0.6	2.0	4.0	4.1
Regional areas	2.3	1.7	2.5	2.4	1.1	3.4	3.5	3.5
Remote areas	2.5	0.7	2.7	2.6	0.9	2.6	6.7	6.0
<i>Australia</i>	4.6	1.8	4.8	4.5	1.6	1.6	2.8	2.8
2008 to 2009								
Major cities	2.4	1.0	2.3	2.1	1.0	2.8	3.9	4.1
Regional areas	3.8	1.6	3.9	3.1	3.6	3.0	3.8	4.5
Remote areas	2.0	0.7	2.3	2.2	2.7	3.4	5.9	5.6
<i>Australia</i>	4.9	2.3	4.9	4.2	2.1	2.1	2.6	2.8
FEMALES								
2005 to 2006								
Major cities	2.0	0.7	2.0	2.1	0.7	2.5	4.0	3.9
Regional areas	2.7	0.9	2.3	2.4	1.1	3.2	3.6	4.2
Remote areas	1.8	0.5	1.6	1.5	0.6	2.9	4.0	4.3
<i>Australia</i>	4.3	1.3	3.8	3.5	1.3	1.9	2.3	2.7
2006 to 2007								
Major cities	2.2	0.6	2.0	1.8	0.8	2.5	3.5	3.8
Regional areas	2.2	0.9	1.9	2.3	1.2	2.9	3.2	3.4
Remote areas	1.9	0.4	1.8	1.8	0.6	2.5	4.4	4.6
<i>Australia</i>	4.0	1.2	3.7	4.0	1.4	1.6	2.4	2.5
2007 to 2008								
Major cities	2.4	1.0	2.4	2.5	0.7	3.3	4.6	4.3
Regional areas	1.8	1.1	1.9	1.9	1.0	3.0	2.7	2.5
Remote areas	3.0	0.6	2.8	3.2	1.0	3.5	7.2	7.9
<i>Australia</i>	4.1	1.6	4.0	4.0	1.6	2.0	2.4	2.5
2008 to 2009								
Major cities	2.6	1.6	2.3	2.4	0.9	4.9	4.2	4.7
Regional areas	2.7	1.2	2.6	2.1	1.2	3.5	3.2	3.5
Remote areas	5.0	0.6	5.1	4.5	1.0	3.5	11.5	11.5
<i>Australia</i>	5.7	1.9	5.8	5.1	1.3	2.3	3.2	3.2

APPENDIX 5 MOVEMENT STANDARD ERRORS *continued*

M4 - MOVEMENT STANDARD ERRORS FOR INDIGENOUS PERSONS AGED 15 TO 64 YEARS, Labour force status by remoteness—2005 to 2009 *continued*

	Total employed	Total unemployed	Labour force	Not in labour force	Civilian population aged 15 to 64 years	Unemployment rate	Participation rate	Employment to population ratio
	'000	'000	'000	'000	'000	pts	pts	pts
PERSONS								
2005 to 2006								
Major cities	2.9	1.4	2.4	2.2	1.0	2.3	2.3	2.8
Regional areas	4.3	1.8	3.8	3.3	2.9	2.7	2.5	3.1
Remote areas	4.2	1.2	4.2	3.4	2.8	2.7	4.7	4.6
Australia	7.1	2.6	5.8	5.5	1.7	1.7	1.8	2.3
2006 to 2007								
Major cities	2.6	0.8	2.5	2.7	1.4	1.4	2.5	2.4
Regional areas	3.2	1.8	2.9	3.1	1.4	2.4	2.2	2.5
Remote areas	3.1	1.1	3.1	3.1	0.9	2.5	3.9	4.0
Australia	5.8	2.4	5.9	6.2	2.1	1.3	1.9	1.9
2007 to 2008								
Major cities	3.7	1.1	3.7	3.6	0.9	1.8	3.5	3.4
Regional areas	3.2	1.7	3.4	3.5	1.2	2.0	2.5	2.4
Remote areas	5.1	1.1	5.0	5.0	1.2	2.7	6.2	6.3
Australia	7.8	2.4	7.8	7.5	1.5	1.3	2.3	2.3
2008 to 2009								
Major cities	3.4	2.0	3.1	3.0	1.3	2.9	2.7	3.1
Regional areas	5.4	2.3	4.9	4.1	4.0	2.9	2.7	3.4
Remote areas	5.0	1.2	5.1	6.3	2.3	2.9	7.5	7.5
Australia	9.0	3.3	9.0	7.4	2.7	1.7	2.4	2.5

APPENDIX 5 MOVEMENT STANDARD ERRORS *continued*

M5 - MOVEMENT STANDARD ERRORS FOR PROPORTIONS OF INDIGENOUS POPULATIONS AGED 15 YEARS AND OVER, Labour force status by remoteness—2005 to 2009

		2005 to 2006	2006 to 2007	2007 to 2008	2008 to 2009
EMPLOYED					
Major cities	pts	1.5	1.6	1.9	2.1
Regional areas	pts	2.0	1.5	1.9	2.0
Remote areas	pts	2.2	1.5	2.4	2.4
Australia	'000	7.1	5.9	7.8	8.9
UNEMPLOYED					
Major cities	pts	4.8	3.7	3.4	4.6
Regional areas	pts	3.3	3.8	4.4	5.4
Remote areas	pts	4.2	3.6	3.7	3.6
Australia	'000	2.6	2.3	2.4	3.3
LABOUR FORCE					
Major cities	pts	1.3	1.2	1.6	1.6
Regional areas	pts	1.6	1.1	1.8	1.4
Remote areas	pts	2.0	1.2	2.0	2.0
Australia	'000	5.8	5.9	7.8	8.8
NOT IN LABOUR FORCE					
Major cities	pts	1.7	1.6	2.1	2.0
Regional areas	pts	1.8	1.5	2.3	2.9
Remote areas	pts	2.1	1.6	2.5	3.8
Australia	'000	5.8	5.9	7.8	8.8
CIVILIAN POPULATION AGED 15 YEARS AND OVER					
Major cities	pts	—	—	—	—
Regional areas	pts	0.8	0.2	0.2	1.0
Remote areas	pts	0.8	0.2	0.2	1.0
Australia	'000	—	—	—	—

— nil or rounded to zero (including null cells)

GLOSSARY

Actively looking for work	Includes writing, telephoning or applying in person to an employer for work; answering an advertisement for a job; checking factory notice boards or the touch screens at Centrelink offices; being registered with Centrelink as a jobseeker; checking or registering with any other employment agency; advertising or tendering for work; and contacting friends or relatives.
Civilian population aged 15 years and over	All usual residents of Australia aged 15 years and over except members of the permanent defence forces, certain diplomatic personnel of overseas governments customarily excluded from the census and estimated population counts, overseas residents in Australia, and members of non-Australian defence forces (and their dependants) stationed in Australia.
Community Development Employment Projects (CDEP) scheme	<p>The CDEP scheme enables participants (usually members of Aboriginal or Torres Strait Islander communities) to exchange unemployment benefits for opportunities to undertake work and training in activities which are managed by a local Aboriginal or Torres Strait Islander community organisation. Participants in the program are therefore classified as employed.</p> <p>In July 2009, the CDEP scheme was discontinued in non-remote communities where the economy is well-established. In remote communities, CDEP will continue to operate but new participants are no longer classified as employed, and the program will be phased out in July 2011.</p>
Contributing family worker	A person who works without pay, in an economic enterprise operated by a relative.
Employed	<p>Persons aged 15 years and over who, during the reference week:</p> <ul style="list-style-type: none"> ■ worked for one hour or more for pay, profit, commission or payment in kind in a job or business, or on a farm (comprising employees, employers and own account workers); or ■ worked for one hour or more without pay in a family business or on a farm (i.e. contributing family workers); or ■ were employees who had a job but were not at work and were: <ul style="list-style-type: none"> ■ away from work for less than four weeks up to the end of the reference week; or ■ away from work for more than four weeks up to the end of the reference week and received pay for some or all of the four week period to the end of the reference week: or ■ away from work as a standard work or shift arrangement: or ■ on strike or locked out: or ■ on workers' compensation and expected to return to their job: or ■ were employers or own account workers, who had a job, business or farm, but were not at work.
Employment to population ratio	For any group, the number of employed persons expressed as a percentage of the civilian population aged 15 years and over in the same group.
Indigenous	Refers to people who identified themselves, or were identified by another household member, as being of Aboriginal and/or Torres Strait Islander origin.
Labour force	For any group, persons who were employed or unemployed, as defined.
Labour force status	A classification of the civilian population aged 15 years and over into employed, unemployed or not in the labour force, as defined. The definitions conform closely to the international standard definitions adopted by the International Conferences of Labour Statisticians.

GLOSSARY *continued*

Major cities	Major cities is a geographical category in the Australian Standard Geographical Classification (ASGC) Remoteness Structure. These categories are based on the Accessibility/Remoteness Index of Australia (ARIA) which measures the remoteness of a point based on the physical road distance to the nearest Urban Centre. For more information on the ASGC, see <i>Australian Standard Geographical Classification (ASGC), July 2009</i> (cat. no. 1216.0). See also Regional and Remote areas.
Not in labour force	Persons who were not in the categories employed or unemployed, as defined.
Participation rate	For any group, the labour force expressed as a percentage of the civilian population in the same group.
Population benchmark	Labour Force Survey estimates of persons employed, unemployed and not in the labour force are calculated in such a way as to add up to an independently estimated distribution of the usually resident civilian population aged 15 years and over. The independent population estimates (benchmarks) for the Indigenous population are based on the low series population projections found in <i>Experimental Estimates and Projections, Aboriginal and Torres Strait Islander Australians, 1991 to 2021</i> (cat. no. 3238.0).
Population value	The value that would be obtained if the whole population were enumerated under the same procedures as used in the sample survey.
Relative Standard Error (RSE)	The relative standard error is the standard error expressed as a percentage of the estimate to which it refers, and is useful when comparing the variability of estimates of different sizes.
Regional areas	Comprises the 'Inner Regional' and 'Outer Regional' categories of the Australian Standard Geographical Classification (ASGC) Remoteness Structure. These categories are based on the Accessibility/Remoteness Index of Australia (ARIA) which measures the remoteness of a point based on the physical road distance to the nearest Urban Centre. For more information on the ASGC, see <i>Australian Standard Geographical Classification (ASGC), July 2009</i> (cat. no. 1216.0). See also Major cities and Remote areas.
Remote areas	Comprises the 'Remote' and 'Very Remote' categories of the Australian Standard Geographical Classification (ASGC) Remoteness Structure. These categories are based on the Accessibility/Remoteness Index of Australia (ARIA) which measures the remoteness of a point based on the physical road distance to the nearest Urban Centre. For more information on the ASGC, see <i>Australian Standard Geographical Classification (ASGC), July 2009</i> (cat. no. 1216.0). See also Major cities and Regional areas.
Standard Error (SE)	A measure of the variation among the estimates from all possible samples, and thus a measure of the precision with which an estimate from a particular sample approximates the average result of all possible samples. The units of the standard error are the same as the variable of interest.
Unemployed	Persons aged 15 years and over who were not employed during the reference week, and: <ul style="list-style-type: none"> ■ had actively looked for full-time or part-time work at any time in the four weeks up to the end of the reference week and were available for work in the reference week; or ■ were waiting to start a new job within four weeks from the end of the reference week and could have started in the reference week if the job had been available then.
Unemployment rate	For any group, the number of unemployed persons expressed as a percentage of the labour force in the same group.

FOR MORE INFORMATION . . .

INTERNET

www.abs.gov.au the ABS website is the best place for data from our publications and information about the ABS.

INFORMATION AND REFERRAL SERVICE

Our consultants can help you access the full range of information published by the ABS that is available free of charge from our website. Information tailored to your needs can also be requested as a 'user pays' service. Specialists are on hand to help you with analytical or methodological advice.

PHONE

1300 135 070

EMAIL

client.services@abs.gov.au

FAX

1300 135 211

POST

Client Services, ABS, GPO Box 796, Sydney NSW 2001

FREE ACCESS TO STATISTICS

All statistics on the ABS website can be downloaded free of charge.

WEB ADDRESS

www.abs.gov.au

ISBN 9780642482990