



RETAIL TRADE

AUSTRALIA

EMBARGO: 11:30AM (CANBERRA TIME) THURS 31 JULY 1997

JUNE KEY FIGURES

TREND ESTIMATES

Turnover at current prices (\$ millions)	May 97	Jun 97	% change
	10 462.5	10 477.5	0.1
	Jun 96	Jun 97	% change
	10 247.5	10 477.5	2.2

SEASONALLY ADJUSTED ESTIMATES

Turnover at current prices (\$ millions)	May 97	Jun 97	% change
	10 586.5	10 395.7	-1.8
	Jun 96	Jun 97	% change
	10 221.6	10 395.7	1.7
Turnover at constant prices (average 1989-90 prices in \$ millions)	Mar 97 qtr	Jun 97 qtr	% change
	26 127.6	25 986.1	-0.5

JUNE KEY POINTS

TREND ESTIMATES

- The growth rate of the trend estimate of turnover for the Australian Retail and Hospitality/Services series eased over recent months with growth of 0.1% in June 1997. April and May each recorded growth of 0.2%.
- Over the three months to June 1997 the trend estimate has increased by \$54.2m. The major contributors to this growth were Food retailing (\$38.0m), Other retailing (\$36.0m) and Hospitality and services (\$32.1m). Department stores decreased by \$52.2m in the same period.

TAKE CARE!
Trend estimates are revised as new monthly data become available.

SEASONALLY ADJUSTED ESTIMATES

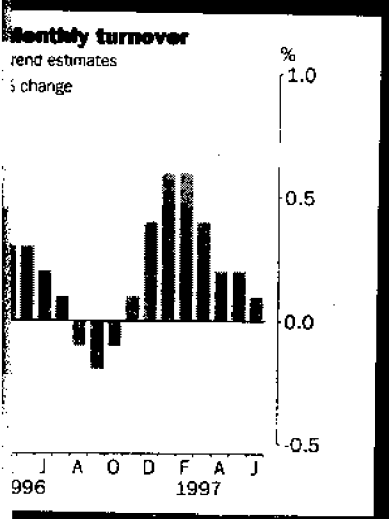
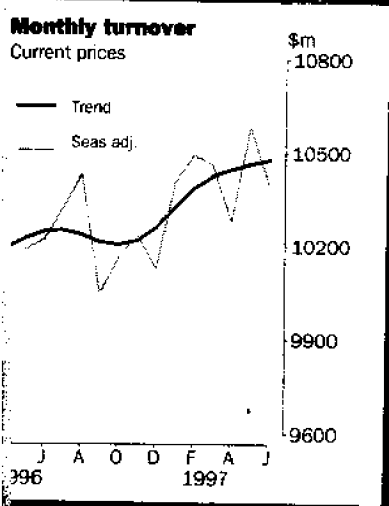
- The fall of 1.8% in the seasonally adjusted result followed a 2.9% increase in May and a fall of 1.7% in April. Department stores, Food retailing and, more recently, Clothing retailing have contributed to these variable results.

ORIGINAL ESTIMATES

- In original terms, Australian retail turnover increased by 1.1% in June 1997 over June 1996. Chains and other large retailers increased turnover by 2.9% in the same period while small retailers fell by 0.8%.

CONSTANT PRICE ESTIMATES

- In seasonally adjusted, constant price terms, the estimate of turnover for the June quarter 1997 fell by 0.5% over the March quarter 1997.



INQUIRIES

For further information about these and related statistics, contact Bill Powell on 06 252 6132. For information about constant price estimates contact Leon Ting on 06 252 6807.

NOTES

FORTHCOMING ISSUES

<i>ISSUE</i>	<i>RELEASE DATE</i>
July 1997	4 September 1997
August 1997	30 September 1997
September 1997	3 November 1997

CHANGES IN THIS ISSUE

There are no changes in this issue.

SAMPLING ERRORS

Standard errors for the Australian estimates (original data) for June 1997 contained in this publication are:

<i>DATA SERIES</i>	<i>ESTIMATE</i>	<i>STANDARD ERROR</i>
Level of retail turnover (\$m)	9 787.3	92.6
Change from May to June (\$m)	-717.0	28.7
% change from May to June	-6.8	0.3

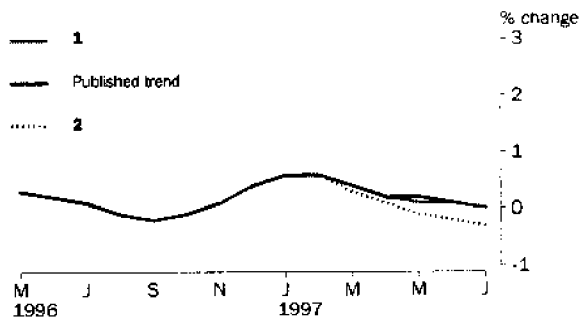
For more information see the Explanatory notes, paragraphs 12-15, or contact Bill Powell on 06 252 6132.

WHAT IF?

The most recent trend estimates published in this release are likely to be revised when next month's seasonally adjusted estimates become available. To assist readers of this publication in analysing retail trends, the effect of two possible scenarios on the previous trend estimates of the percentage change in retail turnover are presented below.

- 1** The July seasonally adjusted estimate of retail turnover is 1.0% higher than the June estimate.
- 2** The July seasonally adjusted estimate of retail turnover is 1.0% lower than the June estimate.

TAKE CARE!
Trend estimates are subject to revision as subsequent data become available. See Explanatory note 9.

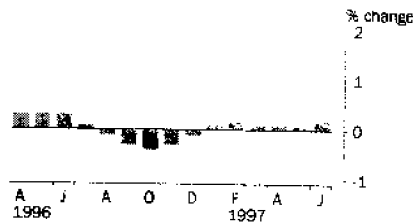


W. McLennan
Australian Statistician

STATE TRENDS

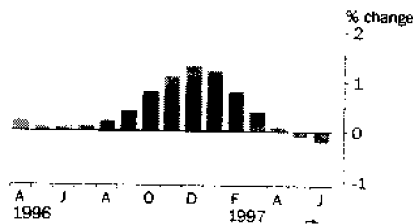
MONTHLY PERCENTAGE CHANGE IN TREND ESTIMATES

NEW SOUTH WALES



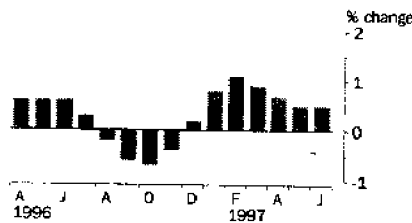
Growth in the trend estimate has remained weak at around 0.1% over the last six months. Department stores and the Clothing and soft good group were both in decline.

VICTORIA



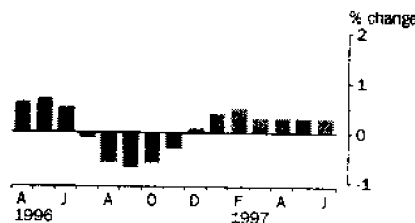
After a period of strong growth in late 1996 and early 1997 the trend estimate was in decline for both May and June. Five of the seven industry groups were in decline.

QUEENSLAND



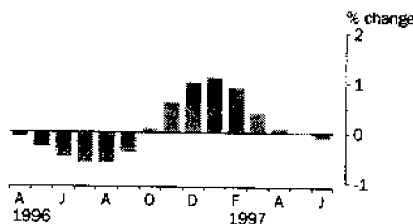
The trend estimate monthly growth rate has remained around 0.6% for the last three months. All industry groups, apart from Department stores, have shown growth over this period.

SOUTH AUSTRALIA



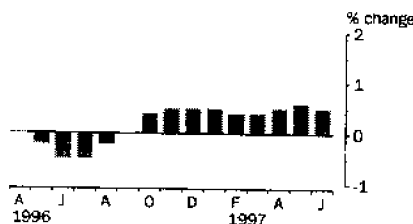
Growth has been steady at 0.3% over the last four months. The Clothing, Household good, Other retailing and Hospitality and services groups all recorded strong growth.

WESTERN AUSTRALIA



The last two months have seen the trend estimate move into decline. Department stores and the Food and Clothing groups are the major contributors to the decline.

TASMANIA

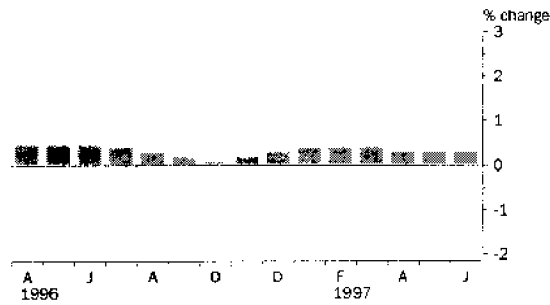


Over each of the last nine months Tasmania has recorded growth of around 0.5%. The Food retailing group has been the major contributor to this continued growth pattern.

INDUSTRY TRENDS

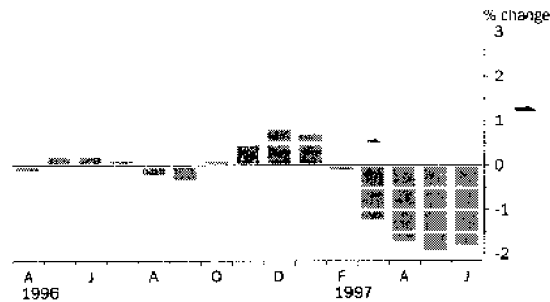
MONTHLY PERCENTAGE CHANGE IN TREND ESTIMATES

FOOD RETAILING



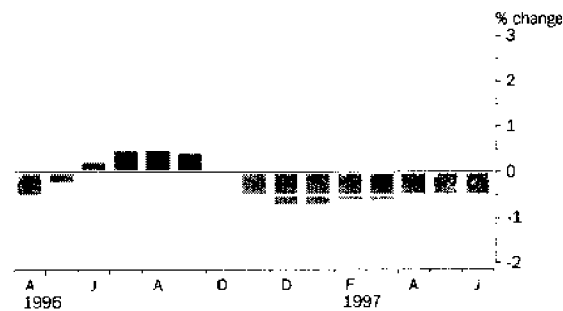
The trend estimate has grown by 0.3% in each of the last three months. Both South Australia and Western Australia were in decline while Tasmania recorded strong growth. Growth was weak to moderate for the remaining States.

DEPARTMENT STORES



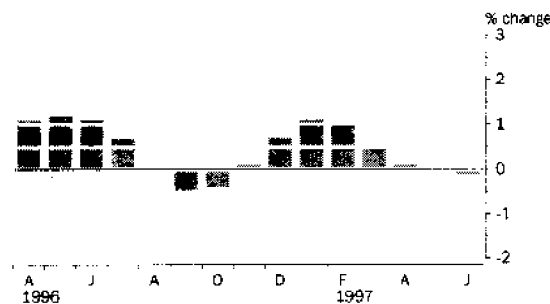
The trend estimate has been in decline for the last five months. All States have shown a similar pattern, each being in decline for the last four to five months.

CLOTHING AND SOFT GOOD RETAILING



The Clothing group has been in decline for the last eight months with an average monthly rate of decline of around 0.6%. While Queensland, South Australia and the Australian Capital Territory recorded strong growth, New South Wales, Victoria, Western Australia and Tasmania were in decline.

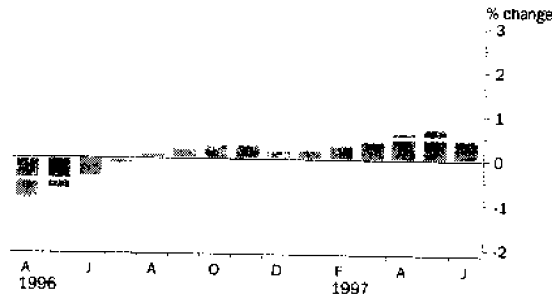
HOUSEHOLD GOOD RETAILING



In January 1997 the trend estimate grew by 1.1%. Since then the rate has eased with both May and June in decline. Victoria, Western Australia and the Northern Territory were in decline.

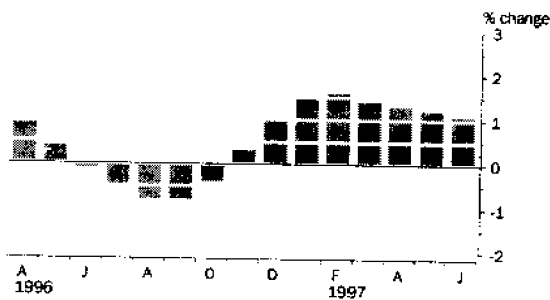
MONTHLY PERCENTAGE CHANGE IN TREND ESTIMATES

RECREATIONAL GOOD RETAILING



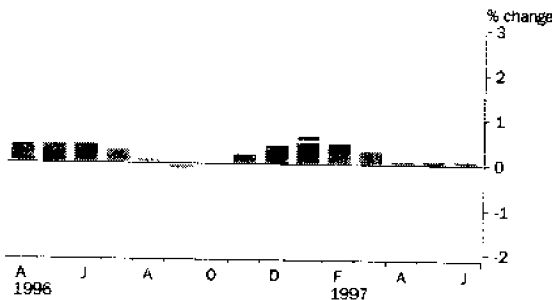
Growth in the trend estimate for the Recreational good group has been around 0.6% for each of the last three months. Growth was strong in Queensland, Western Australia and the two Territories. Victoria has been in decline for the last four months.

OTHER RETAILING



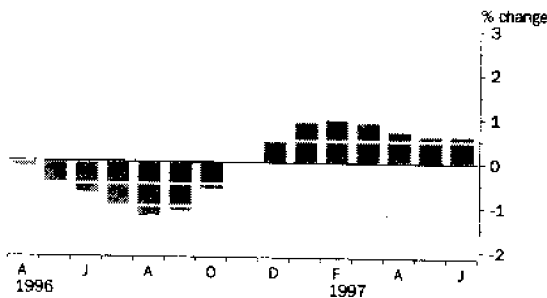
Monthly growth has been strong over the last seven months with increases of 1.0% or more. Most States have recorded strong growth over this period.

TOTAL RETAIL (excluding Hospitality and Services)



In recent months, movement in the trend estimate for Total retail (excluding the Hospitality and services group) were marginally weaker than that observed for Total industries (including the Hospitality and services group).

HOSPITALITY AND SERVICES



The trend estimate has grown by around 0.6% for each of the last three months. Growth has been strong in Queensland, South Australia and Western Australia. Victoria was in decline.

RETAIL TURNOVER, By Industry Group(a): All series

Month	Food retailing	Department stores	Clothing and soft good retailing	Household good retailing	Recreational good retailing	Other retailing	Hospitality and services	Total
ORIGINAL (\$ million)								
1996								
April	4 005.9	895.3	675.8	1 014.0	532.4	869.9	1 737.5	9 730.8
May	4 157.4	962.8	712.9	1 108.5	550.6	933.1	1 711.9	10 137.2
June	3 935.5	908.7	672.5	1 089.1	531.8	864.3	1 674.8	9 676.7
July	4 091.2	908.2	689.7	1 186.8	550.4	914.1	1 694.5	10 034.9
August	4 231.8	889.1	646.2	1 137.2	559.9	929.1	1 712.4	10 105.7
September	3 999.9	833.9	641.4	1 066.2	540.0	896.8	1 648.0	9 626.2
October	4 301.3	933.8	707.1	1 173.0	568.7	980.1	1 738.7	10 402.7
November	4 277.5	1 081.8	694.6	1 192.9	606.5	1 012.3	1 742.5	10 608.1
December	4 695.1	1 837.9	975.5	1 499.2	859.2	1 361.2	1 969.3	13 197.4
1997								
January	4 363.2	841.0	677.3	1 134.8	565.7	898.8	1 774.5	10 255.3
February	3 952.4	727.6	526.2	1 082.1	524.4	859.0	1 578.3	9 250.0
March	4 315.0	858.1	592.2	1 096.7	554.4	888.1	1 727.5	10 032.0
April	4 131.7	849.2	675.6	1 097.2	560.3	940.3	1 701.7	9 956.0
May	4 339.2	995.1	733.5	1 165.3	563.3	982.9	1 725.0	10 504.3
June	4 040.7	830.4	641.8	1 145.9	548.4	909.1	1 671.0	9 787.3
SEASONALLY ADJUSTED (\$ million)								
1996								
April	4 083.6	964.4	671.6	1 105.2	587.3	943.6	1 777.9	10 133.5
May	4 148.3	947.9	678.0	1 111.9	572.5	964.9	1 764.7	10 188.2
June	4 146.5	943.7	669.6	1 143.8	582.0	959.5	1 776.7	10 221.6
July	4 166.3	1 013.5	702.1	1 188.8	562.9	969.2	1 717.8	10 320.7
August	4 222.0	1 024.3	703.8	1 179.1	593.7	958.3	1 750.6	10 431.9
September	4 177.3	901.4	692.1	1 123.1	564.6	901.6	1 690.3	10 050.4
October	4 207.1	931.7	689.2	1 141.9	566.9	944.2	1 682.6	10 163.7
November	4 224.6	989.2	687.2	1 138.5	570.2	942.1	1 683.3	10 235.1
December	4 139.0	990.1	689.2	1 118.5	612.3	927.2	1 652.0	10 128.2
1997								
January	4 263.7	980.3	694.5	1 165.6	581.1	969.4	1 751.5	10 406.2
February	4 257.7	999.2	674.5	1 231.4	571.5	996.9	1 760.7	10 491.8
March	4 347.9	1 000.7	653.8	1 198.6	564.5	962.7	1 733.7	10 462.0
April	4 191.5	906.1	668.6	1 148.8	606.2	1 012.9	1 750.8	10 285.0
May	4 333.4	978.8	700.4	1 180.7	599.0	1 028.9	1 765.2	10 586.5
June	4 295.8	876.3	643.3	1 185.0	600.0	1 012.9	1 782.3	10 395.7
TREND ESTIMATES (\$ million)								
1996								
April	4 113.0	964.8	684.7	1 119.3	581.2	954.3	1 779.4	10 196.7
May	4 135.1	966.8	683.5	1 133.1	577.0	958.2	1 771.2	10 224.9
June	4 156.9	968.7	685.0	1 146.0	574.5	957.7	1 758.6	10 247.5
July	4 173.9	969.2	688.4	1 154.2	573.7	953.2	1 740.4	10 253.1
August	4 186.1	967.4	692.0	1 154.1	574.0	945.7	1 719.1	10 238.5
September	4 192.4	964.7	694.7	1 148.3	575.3	938.6	1 700.5	10 214.5
October	4 198.1	965.8	694.8	1 143.6	577.2	935.1	1 689.9	10 204.4
November	4 205.8	970.3	691.0	1 144.7	579.0	937.5	1 689.4	10 217.7
December	4 218.4	978.2	686.2	1 153.1	580.2	946.6	1 698.5	10 261.1
1997								
January	4 235.1	984.7	681.6	1 166.1	581.5	960.6	1 714.4	10 324.1
February	4 254.1	983.6	677.8	1 177.9	583.4	976.1	1 732.1	10 385.0
March	4 270.9	971.5	674.0	1 183.9	585.9	989.9	1 747.1	10 423.2
April	4 284.8	954.5	670.4	1 185.5	589.4	1 002.8	1 758.9	10 446.3
May	4 296.3	936.3	667.1	1 185.0	593.7	1 014.7	1 769.3	10 462.5
June	4 308.9	919.3	663.9	1 183.6	596.6	1 025.9	1 779.2	10 477.5

(a) See paragraph 3 of the Explanatory Notes

RETAIL TURNOVER PERCENTAGE CHANGE, By Industry Group(a): All series

Month	Food retailing	Department stores	Clothing and soft good retailing	Household good retailing	Recreational good retailing	Other retailing	Hospitality and services	Total
ORIGINAL (% change from preceding month)								
1996								
April	-2.5	10.2	7.1	-4.3	-4.6	0.5	-2.2	-0.8
May	3.8	7.5	5.5	9.3	3.4	7.3	-1.5	4.2
June	-5.3	-5.6	-5.7	-1.8	-3.4	-7.4	-2.2	-4.5
July	4.0	-0.1	2.6	9.0	3.5	5.8	1.2	3.7
August	3.4	-2.1	-6.3	-4.2	1.7	1.6	1.1	0.7
September	-5.5	-6.2	-0.7	-6.2	-3.6	-3.5	-3.8	-4.7
October	7.5	12.0	10.2	10.0	5.3	9.3	5.5	8.1
November	-0.6	15.8	-1.8	1.7	6.6	3.3	0.2	2.0
December	9.8	69.9	40.4	25.7	41.7	34.5	13.0	24.4
1997								
January	-7.1	-54.2	-30.6	-24.3	-34.2	-34.0	-9.9	-22.3
February	-9.4	-13.5	-22.3	-4.6	-7.3	-4.4	-11.1	-9.8
March	9.2	17.9	12.5	1.3	5.7	3.4	9.5	8.5
April	-4.2	-1.0	14.1	0.0	1.1	5.9	-1.5	-0.8
May	5.0	17.2	8.6	6.2	0.5	4.5	1.4	5.5
June	-6.9	-16.6	-12.5	-1.7	-2.6	-7.5	-3.1	-6.8
SEASONALLY ADJUSTED (% change from preceding month)								
1996								
April	-0.7	0.4	-4.0	-1.1	3.5	0.6	-0.9	-0.6
May	1.6	-1.7	1.0	0.6	-2.5	2.3	-0.7	0.5
June	0.0	-0.4	-1.2	2.9	1.7	-0.6	0.7	0.3
July	0.5	7.4	4.9	3.9	-3.3	1.0	-3.3	1.0
August	1.3	1.1	0.2	-0.8	5.5	-1.1	1.9	1.1
September	-1.1	-12.0	-1.7	-4.7	-4.9	-5.9	-3.4	-3.7
October	0.7	3.4	-0.4	1.7	0.4	4.7	-0.5	1.1
November	0.4	6.2	-0.3	-0.3	0.6	-0.2	0.0	0.7
December	-2.0	0.1	0.3	-1.8	7.4	-1.6	-1.9	-1.0
1997								
January	3.0	-1.0	0.8	4.2	-5.1	4.6	6.0	2.7
February	-0.1	1.9	-2.9	5.6	-1.7	2.8	0.5	0.8
March	2.1	0.2	-3.1	-2.7	-1.2	-3.4	-1.5	-0.3
April	-3.6	-9.5	2.3	-4.2	7.4	5.2	1.0	-1.7
May	3.4	8.0	4.8	2.8	-1.2	1.6	0.8	2.9
June	-0.9	-10.5	-8.2	0.4	0.2	-1.6	1.0	-1.8
TREND ESTIMATES (% change from preceding month)								
1996								
April	0.5	-0.1	-0.5	1.1	-0.9	0.9	-0.1	0.3
May	0.5	0.2	-0.2	1.2	-0.7	0.4	-0.5	0.3
June	0.5	0.2	0.2	1.1	-0.4	-0.1	-0.7	0.2
July	0.4	0.1	0.5	0.7	-0.1	-0.5	-1.0	0.1
August	0.3	-0.2	0.5	0.0	0.1	-0.8	-1.2	-0.1
September	0.2	-0.3	0.4	-0.5	0.2	-0.8	-1.1	-0.2
October	0.1	0.1	0.0	-0.4	0.3	-0.4	-0.6	-0.1
November	0.2	0.5	-0.5	0.1	0.3	0.3	0.0	0.1
December	0.3	0.8	-0.7	0.7	0.2	1.0	0.5	0.4
1997								
January	0.4	0.7	-0.7	1.1	0.2	1.5	0.9	0.6
February	0.4	-0.1	-0.6	1.0	0.3	1.6	1.0	0.6
March	0.4	-1.2	-0.6	0.5	0.4	1.4	0.9	0.4
April	0.3	-1.7	-0.5	0.1	0.6	1.3	0.7	0.2
May	0.3	-1.9	-0.5	0.0	0.7	1.2	0.6	0.2
June	0.3	-1.8	-0.5	-0.1	0.5	1.1	0.6	0.1

(a) See paragraph 3 of the Explanatory Notes

RETAIL TURNOVER, By Sub-Group(a): Original

Month	FOOD RETAILING.....				CLOTHING AND SOFT GOOD RETAILING.....				HOUSEHOLD GOOD RETAILING....			
	Super- markets and grocery stores	Takeaway food retailing	Other food retailing	Total	Total Department stores	Clothing retailing	Other clothing related retailing	Total	Furniture and floor covering retailing	Domestic hardware & house- ware retailing	Domestic appliance retailing	Total
\$ MILLION												
1996												
April	2 758.2	596.8	650.9	4 005.9	895.3	487.1	188.7	675.8	238.5	229.8	545.7	1 014.0
May	2 916.3	585.4	655.7	4 157.4	962.8	513.6	199.3	712.9	248.7	247.3	612.5	1 108.5
June	2 741.7	556.6	637.2	3 935.5	908.7	472.4	200.1	672.5	254.3	228.6	606.2	1 089.1
July	2 844.4	587.1	659.7	4 091.2	908.2	488.9	200.8	689.7	286.0	241.6	659.2	1 186.8
August	2 972.4	589.6	669.8	4 231.8	889.1	452.9	193.3	646.2	278.5	228.1	630.6	1 137.2
September	2 796.3	567.4	636.2	3 999.9	833.9	444.9	196.5	641.4	259.5	229.0	577.7	1 066.2
October	3 030.4	595.3	675.6	4 301.3	933.8	485.7	221.4	707.1	292.5	267.8	612.7	1 173.0
November	3 015.4	579.6	682.5	4 277.5	1 081.8	477.8	216.8	694.6	284.4	274.5	634.0	1 192.9
December	3 244.5	613.9	836.7	4 695.1	1 837.9	684.4	291.1	975.5	275.0	361.3	862.9	1 499.2
1997												
January	3 084.8	625.7	652.7	4 363.2	841.0	449.3	228.0	677.3	259.2	242.2	633.4	1 134.8
February	2 802.3	548.5	601.6	3 952.4	727.6	358.3	167.9	526.2	249.2	229.6	603.3	1 082.1
March	3 067.6	596.2	651.2	4 315.0	858.1	400.2	192.0	592.2	243.3	257.7	595.7	1 096.7
April	2 876.3	592.0	663.4	4 131.7	849.2	467.5	208.1	675.6	249.2	236.8	611.2	1 097.2
May	3 058.3	606.3	674.6	4 339.2	995.1	517.1	216.4	733.5	264.3	231.9	669.1	1 165.3
June	2 820.0	579.8	640.9	4 040.7	830.4	446.2	195.6	641.8	268.7	215.7	661.5	1 145.9
% CHANGE FROM PRECEDING MONTH												
1996												
April	-4.0	-0.4	2.1	-2.5	10.2	10.0	0.2	7.1	-6.4	-3.7	-3.7	-4.3
May	5.7	-1.9	0.7	3.8	7.5	5.4	5.6	5.5	4.3	7.6	12.2	9.3
June	-6.0	-4.9	-2.8	-5.3	-5.6	-8.0	0.4	-5.7	2.3	-7.6	-1.0	-1.8
July	3.7	5.5	3.5	4.0	-0.1	3.5	0.3	2.6	12.5	5.7	8.7	9.0
August	4.5	0.4	1.5	3.4	-2.1	-7.4	-3.7	-6.3	-2.6	-5.6	4.3	-4.2
September	-5.9	-3.8	-5.0	-5.5	-6.2	-1.8	1.7	-0.7	-6.8	0.4	-8.4	-6.2
October	8.4	4.9	6.2	7.5	12.0	9.2	12.7	10.2	12.7	16.9	6.1	10.0
November	0.5	-2.6	1.0	-0.6	15.8	-1.6	-2.1	-1.8	-2.8	2.5	3.5	1.7
December	7.6	5.9	22.6	9.8	69.9	43.2	34.3	40.4	-3.3	31.6	36.1	25.7
1997												
January	-4.9	1.9	-22.0	-7.1	-54.2	-34.4	-21.7	-30.6	-5.7	-33.0	26.6	-24.3
February	-9.2	-12.3	-7.8	-9.4	-13.5	-20.3	-26.4	-22.3	-3.9	-5.2	4.8	-4.6
March	9.5	8.7	8.2	9.2	17.9	11.7	14.4	12.5	-2.4	12.2	-1.3	1.3
April	-6.2	-0.7	1.9	-4.2	-1.0	16.8	8.4	14.1	2.4	-8.1	2.6	0.0
May	6.3	2.4	1.7	5.0	17.2	10.6	4.0	8.6	6.1	-2.1	9.5	6.2
June	-7.8	-4.4	-5.0	-6.9	-16.6	-13.7	-9.6	-12.5	1.7	-7.0	-1.1	-1.7
% CHANGE FROM CORRESPONDING MONTH OF PREVIOUS YEAR												
1996												
April	7.0	17.2	5.6	8.1	-1.2	-2.1	2.3	-0.9	0.7	19.2	5.3	7.0
May	10.9	16.4	8.4	11.2	3.8	3.9	6.8	4.7	-11.3	30.7	2.8	4.1
June	4.9	12.7	6.8	6.3	0.2	-3.7	3.8	-1.6	-10.7	19.2	0.9	1.1
July	7.8	10.9	6.7	8.0	3.1	6.5	7.4	6.8	-1.5	24.2	17.7	13.6
August	8.3	9.5	4.6	7.9	1.7	-0.4	8.0	2.0	0.3	9.1	16.9	10.8
September	3.5	5.6	0.6	3.3	-2.7	-2.7	2.9	-1.0	-9.8	7.6	9.3	3.6
October	9.9	3.2	1.9	7.6	1.4	0.5	16.0	4.9	-1.8	5.1	15.1	8.1
November	6.5	1.0	-2.5	4.2	1.3	-7.0	13.3	-1.5	2.1	1.0	9.4	5.6
December	2.0	1.4	-1.9	1.2	-1.1	-5.7	15.0	-0.4	-3.2	4.8	6.7	4.3
1997												
January	11.3	0.0	2.2	8.1	0.9	-6.1	16.7	0.5	-0.2	-6.2	13.9	5.6
February	1.4	-3.8	-3.7	-0.1	-1.3	-10.9	0.1	-7.6	1.8	-0.3	14.8	8.1
March	6.8	-0.5	2.1	5.0	5.7	-9.6	1.9	-6.2	-4.6	8.0	5.2	3.5
April	4.3	-0.8	1.9	3.1	-5.1	-4.0	10.3	0.0	4.5	3.0	12.0	8.2
May	4.9	3.6	2.9	4.4	3.4	0.7	8.6	2.9	6.3	-6.2	9.2	5.1
June	2.9	4.2	0.6	2.7	-8.6	-5.5	-2.2	-4.6	5.7	-5.6	9.1	5.2

(a) See paragraph 3 of the Explanatory Notes

RETAIL TURNOVER, By Sub-Group(a): Original *continued*

Month	RECREATIONAL GOOD RETAILING.....			OTHER RETAILING.....			HOSPITALITY AND SERVICES.....				Total all industries
	News-paper, book and stationery retailing	Other recreational good retailing	Total	Pharmaceutical cosmetic & toiletry retailing	Other retailing	Total	Hotels and licensed clubs	Cafes and restaurants	Selected services	Total	
\$ MILLION											
1996											
April	359.8	172.6	532.4	442.8	427.1	869.9	1 047.0	510.5	180.0	1 737.5	9 730.8
May	373.8	176.8	550.6	474.6	458.5	933.1	1 043.8	491.8	176.3	1 711.9	10 137.2
June	358.6	173.2	531.8	449.3	415.0	864.3	1 021.9	480.2	172.7	1 674.8	9 676.7
July	370.3	180.1	550.4	474.8	439.3	914.1	1 014.3	498.0	182.2	1 694.5	10 034.9
August	384.0	175.9	559.9	474.4	454.7	929.1	1 042.1	494.6	175.7	1 712.4	10 105.7
September	358.8	181.2	540.0	447.6	449.2	896.8	1 003.5	473.4	171.1	1 648.0	9 626.2
October	371.3	197.4	568.7	486.9	493.2	980.1	1 070.7	486.7	181.3	1 738.7	10 402.7
November	380.9	225.6	606.5	488.3	524.0	1 012.3	1 087.0	484.4	171.1	1 742.5	10 608.1
December	487.5	371.7	859.2	575.5	785.7	1 361.2	1 241.2	536.5	191.6	1 969.3	13 197.4
1997											
January	388.3	177.4	565.7	420.2	478.6	898.8	1 090.6	497.2	186.7	1 774.5	10 255.3
February	368.3	156.1	524.4	402.5	456.5	859.0	971.8	454.0	152.5	1 678.3	9 250.0
March	376.0	178.4	554.4	430.1	458.0	888.1	1 071.4	492.5	163.6	1 727.5	10 032.0
April	381.5	178.8	560.3	465.4	474.9	940.3	1 035.0	501.1	165.6	1 701.7	9 956.0
May	385.7	177.6	563.3	481.2	501.7	982.9	1 049.2	506.0	169.8	1 725.0	10 504.3
June	361.4	187.0	548.4	455.2	453.9	909.1	1 034.0	472.7	164.3	1 671.0	9 787.3
% CHANGE FROM PRECEDING MONTH											
1996											
April	-6.4	-0.7	-4.6	-0.4	1.4	-0.5	-3.7	2.0	-4.4	-2.2	-0.8
May	3.9	2.4	3.4	7.2	7.4	7.3	-0.3	-3.7	-2.1	-1.5	4.2
June	-4.1	-2.0	-3.4	-5.3	-9.5	-7.4	-2.1	-2.4	-2.0	-2.2	-4.5
July	3.3	4.0	3.5	5.7	5.9	5.8	-0.7	3.7	5.5	1.2	3.7
August	3.7	-2.3	1.7	-0.1	3.5	1.6	2.7	0.7	-3.6	1.1	0.7
September	-6.6	3.0	-3.6	-5.6	-1.2	-3.5	-3.7	-4.3	-2.6	-3.8	-4.7
October	3.5	8.9	5.3	8.8	9.8	9.3	6.7	2.8	6.0	5.5	8.1
November	2.6	14.3	6.6	0.3	6.2	3.3	1.5	-0.5	-5.6	0.2	2.0
December	28.0	64.8	41.7	17.9	49.9	34.5	14.2	10.8	12.0	13.0	24.4
1997											
January	-20.3	-52.3	-34.2	-27.0	39.1	-34.0	-12.1	7.3	-2.6	-9.9	-22.3
February	-5.2	-12.0	-7.3	-4.2	4.6	-4.4	-10.9	8.7	-18.3	-11.1	-9.8
March	2.1	14.3	5.7	6.9	0.3	3.4	10.2	8.5	7.3	9.5	8.5
April	1.5	0.2	1.1	8.2	3.7	5.9	-3.4	1.7	1.2	-1.5	-0.8
May	1.1	-0.7	0.5	3.4	5.6	4.5	1.4	1.0	2.5	1.4	5.5
June	-6.3	5.3	-2.6	-5.4	9.5	-7.5	-1.4	-6.6	-3.2	-3.1	-6.8
% CHANGE FROM CORRESPONDING MONTH OF PREVIOUS YEAR											
1996											
April	12.5	13.9	13.0	4.8	8.1	6.4	1.5	9.9	8.2	4.5	5.9
May	1.9	18.7	6.7	2.7	12.2	7.2	3.4	3.4	8.4	3.9	7.3
June	3.8	14.2	7.0	-0.3	8.4	3.7	1.2	7.8	5.0	3.4	3.8
July	-1.7	11.9	2.4	4.9	9.1	6.8	-3.3	4.9	6.8	0.0	6.2
August	0.3	8.0	2.6	-1.7	7.0	2.4	-1.6	4.9	7.3	1.1	5.2
September	-3.7	5.5	-0.8	-7.1	1.9	-2.8	-7.1	-1.6	1.8	-4.7	0.2
October	0.2	10.2	3.5	3.7	7.2	5.4	-1.6	-3.5	-0.3	-2.0	4.8
November	-3.8	6.6	-0.2	-0.4	7.6	3.6	-1.8	-8.0	-6.6	-4.1	1.9
December	-0.4	1.2	0.3	0.3	3.1	1.7	-4.9	-9.3	10.5	-6.7	-0.2
1997											
January	-8.0	-1.4	-6.0	-5.3	12.6	3.4	0.8	-3.7	6.8	-1.4	3.7
February	5.0	-4.9	-4.9	-4.2	7.4	1.7	2.5	-6.2	-12.0	-4.5	-0.7
March	-2.1	2.6	-0.6	-3.2	8.7	2.6	-1.5	-1.6	-13.1	-2.7	2.2
April	6.0	3.6	5.2	5.1	11.2	8.1	-1.1	1.8	-8.0	-2.1	2.3
May	3.2	0.5	2.3	1.4	9.4	5.3	0.5	2.9	-3.7	0.8	3.6
June	0.8	8.0	3.1	1.3	9.4	5.2	1.2	-1.6	-4.9	-0.2	1.1

(a) See paragraph 3 of the Explanatory Notes

RETAIL TURNOVER, By State: All series

Month	New South Wales	Victoria	Queensland	South Australia	Western Australia	Tasmania	Northern Territory	Australian Capital Territory	Australia
ORIGINAL (\$ million)									
1996									
April	3 512.3	2 233.5	1 719.3	738.4	990.0	237.8	112.6	186.9	9 730.8
May	3 644.7	2 298.5	1 831.0	768.1	1 032.6	250.3	119.0	193.0	10 137.2
June	3 494.2	2 183.9	1 768.7	727.9	968.0	230.6	119.2	184.2	9 676.7
July	3 632.9	2 239.9	1 872.4	746.7	999.0	229.1	126.3	188.6	10 034.9
August	3 640.8	2 267.7	1 881.7	756.5	1 004.5	238.2	125.7	190.6	10 105.7
September	3 493.1	2 147.1	1 808.1	716.6	934.9	222.5	116.1	187.8	9 626.2
October	3 716.1	2 398.6	1 894.6	770.6	1 058.0	249.1	119.6	196.1	10 402.7
November	3 807.4	2 468.0	1 913.0	787.5	1 057.4	257.9	113.2	203.7	10 608.1
December	4 731.8	3 152.7	2 316.4	1 000.0	1 287.4	324.3	125.2	259.6	13 197.4
1997									
January	3 602.8	2 416.5	1 897.4	752.4	1 054.4	247.4	100.0	184.4	10 255.3
February	3 290.6	2 183.7	1 666.1	673.0	947.7	224.7	95.1	169.1	9 250.0
March	3 574.8	2 377.5	1 804.9	739.2	1 006.8	242.2	101.7	184.9	10 032.0
April	3 485.5	2 395.1	1 789.4	740.7	1 006.4	245.9	105.6	187.4	9 956.0
May	3 713.2	2 461.8	1 920.6	774.9	1 067.6	254.0	110.7	201.5	10 504.3
June	3 491.9	2 284.7	1 802.6	717.0	961.5	234.2	110.7	184.7	9 787.3
SEASONALLY ADJUSTED (\$ million)									
1996									
April	3 648.4	2 300.6	1 833.6	761.0	1 034.5	246.3	120.5	188.7	10 133.5
May	3 652.6	2 309.8	1 850.9	775.6	1 037.7	251.1	119.2	191.3	10 188.2
June	3 685.6	2 303.7	1 864.9	778.9	1 026.3	247.3	120.1	194.7	10 221.6
July	3 750.0	2 319.8	1 910.0	773.0	1 018.0	239.9	115.5	194.5	10 320.7
August	3 767.5	2 354.5	1 914.4	786.8	1 049.7	244.8	117.2	196.9	10 431.9
September	3 641.7	2 277.3	1 856.3	754.2	969.3	239.5	114.6	197.4	10 050.4
October	3 646.4	2 353.1	1 833.3	747.1	1 035.0	246.6	113.2	188.9	10 163.7
November	3 667.4	2 385.3	1 853.5	755.5	1 017.1	248.2	111.8	196.3	10 235.1
December	3 647.0	2 372.6	1 801.3	757.4	994.5	248.0	109.4	198.0	10 128.2
1997									
January	3 666.2	2 460.5	1 862.6	771.4	1 066.0	248.5	112.8	198.3	10 406.2
February	3 718.8	2 477.5	1 908.9	767.1	1 064.5	246.5	112.3	196.0	10 491.8
March	3 698.3	2 485.0	1 910.1	765.1	1 054.7	252.0	107.2	189.5	10 462.0
April	3 590.7	2 454.9	1 891.6	754.9	1 040.4	251.4	112.7	188.3	10 285.0
May	3 737.2	2 470.0	1 955.9	784.0	1 075.0	254.5	111.1	198.8	10 586.5
June	3 699.5	2 425.7	1 902.7	774.9	1 029.0	254.8	111.7	197.4	10 395.7
TREND ESTIMATES (\$ million)									
1996									
April	3 677.4	2 306.3	1 852.4	765.3	1 037.7	247.3	120.4	190.0	10 196.7
May	3 689.3	2 308.1	1 864.2	770.9	1 034.2	246.7	119.7	191.8	10 224.9
June	3 699.5	2 310.8	1 875.7	774.5	1 029.3	245.5	118.8	193.4	10 247.5
July	3 704.6	2 314.0	1 881.4	773.7	1 023.2	244.3	117.5	194.5	10 253.1
August	3 700.8	2 319.2	1 877.8	769.3	1 016.8	243.7	116.0	195.0	10 238.5
September	3 688.4	2 329.4	1 866.6	763.6	1 012.7	243.8	114.5	195.4	10 214.5
October	3 675.3	2 348.3	1 854.3	759.4	1 013.5	244.7	113.2	195.7	10 204.4
November	3 665.0	2 375.0	1 847.0	757.5	1 019.1	246.0	112.2	195.9	10 217.7
December	3 661.8	2 406.9	1 850.7	758.3	1 029.1	247.3	111.4	195.6	10 261.1
1997									
January	3 666.5	2 436.3	1 865.4	761.0	1 040.3	248.5	110.9	195.1	10 324.1
February	3 674.4	2 456.8	1 885.1	764.5	1 049.4	249.5	110.8	194.5	10 385.0
March	3 679.2	2 465.7	1 902.0	767.1	1 053.8	250.6	110.9	194.0	10 423.2
April	3 683.2	2 467.2	1 914.7	769.4	1 055.1	251.9	111.0	193.8	10 446.3
May	3 688.2	2 464.5	1 924.4	771.9	1 055.0	253.3	111.2	194.0	10 462.5
June	3 695.2	2 459.4	1 934.3	774.5	1 053.6	254.5	111.4	194.5	10 477.5

RETAIL TURNOVER PERCENTAGE CHANGE, By State: All series

Month	New South Wales	Victoria	Queensland	South Australia	Western Australia	Tasmania	Northern Territory	Australian Capital Territory	Australia
ORIGINAL (% change from preceding month)									
1996									
April	-1.1	0.2	2.3	0.1	-0.3	-1.5	-1.3	1.3	-0.8
May	3.8	2.9	6.5	4.0	4.3	5.3	5.7	3.3	4.2
June	-4.1	5.0	-3.4	-5.2	-6.3	-7.9	0.2	-4.6	-4.5
July	4.0	2.6	5.9	2.6	3.2	-0.7	6.0	2.4	3.7
August	0.2	1.2	0.5	1.3	0.6	4.0	-0.5	1.1	0.7
September	-4.1	-5.3	-3.9	-5.3	-6.9	6.5	-7.6	-1.5	-4.7
October	6.4	11.7	4.8	7.5	13.2	12.0	3.0	4.4	8.1
November	2.5	2.9	1.0	2.2	0.1	3.5	-5.4	3.9	2.0
December	24.3	27.7	21.1	27.0	21.8	25.7	10.6	27.4	24.4
1997									
January	-23.9	23.4	-18.1	24.8	-18.1	-23.7	-20.1	29.0	-22.3
February	-8.7	9.6	-12.2	10.6	-10.1	-9.2	-4.9	8.3	-9.8
March	8.6	8.9	8.3	9.8	6.2	7.8	6.9	9.3	8.5
April	-2.5	0.7	-0.9	0.2	0.0	1.5	3.8	1.4	-0.8
May	6.5	2.8	7.3	4.6	6.1	3.3	4.8	7.5	5.5
June	-6.0	-7.2	-6.1	-7.5	-9.9	-7.8	0.0	-8.3	-6.8
SEASONALLY ADJUSTED (% change from preceding month)									
1996									
April	-0.9	0.4	-0.6	0.4	-0.6	0.2	-0.3	0.5	-0.6
May	0.1	0.4	0.9	1.9	0.3	1.9	-1.1	1.4	0.5
June	0.9	-0.3	0.8	0.4	1.1	-1.5	0.8	1.8	0.3
July	1.7	0.7	2.4	-0.8	-0.8	-3.0	-3.8	-0.1	1.0
August	0.5	1.5	0.2	1.8	3.1	2.0	1.5	1.2	1.1
September	-3.3	-3.3	-3.0	4.1	-7.7	-2.2	-2.2	0.3	-3.7
October	0.1	3.3	-1.2	-0.9	6.8	3.0	-1.2	-4.3	1.1
November	0.6	1.4	1.1	1.1	1.7	0.6	-1.2	3.9	0.7
December	-0.6	-0.5	2.8	0.3	-2.2	-0.1	-2.1	0.9	-1.0
1997									
January	0.5	3.7	4.5	1.8	7.2	0.2	3.1	0.2	2.7
February	1.4	0.7	1.4	0.6	-0.1	-0.8	-0.4	-1.2	0.8
March	-0.6	0.3	0.1	-0.3	-0.9	2.2	-4.5	-3.3	-0.3
April	-2.9	-1.2	-1.0	-1.3	-1.4	-0.2	5.1	-0.6	-1.7
May	4.1	0.6	3.4	3.9	3.3	1.2	-1.4	5.6	2.9
June	-1.0	-1.8	-2.7	-1.2	-4.3	0.1	0.5	-0.7	-1.8
TREND ESTIMATES (% change from preceding month)									
1996									
April	0.3	0.2	0.6	0.6	-0.1	0.0	-0.1	0.8	0.3
May	0.3	0.1	0.6	0.7	-0.3	0.2	-0.6	0.9	0.3
June	0.3	0.1	0.6	0.5	-0.5	-0.5	-0.8	0.8	0.2
July	0.1	0.1	0.3	0.1	-0.6	0.5	-1.1	0.6	0.1
August	-0.1	0.2	-0.2	-0.6	-0.6	-0.2	-1.3	0.3	-0.1
September	-0.3	0.4	0.6	-0.7	0.4	0.0	-1.3	0.7	-0.2
October	-0.4	0.8	-0.7	-0.6	0.1	0.4	-1.1	0.2	-0.1
November	-0.3	1.1	-0.4	-0.3	0.6	0.5	-0.9	0.1	0.1
December	-0.1	1.3	0.2	0.1	1.0	0.5	-0.7	-0.2	0.4
1997									
January	0.1	1.2	0.8	0.4	1.1	0.5	-0.4	0.3	0.6
February	0.2	0.8	1.1	0.5	0.9	0.4	-0.1	-0.3	0.6
March	0.1	0.4	0.9	0.3	0.4	0.4	0.1	-0.3	0.4
April	0.1	0.1	0.7	0.3	0.1	0.3	0.1	-0.1	0.2
May	0.1	-0.1	0.5	0.3	0.0	0.6	0.2	0.1	0.2
June	0.2	-0.2	0.5	0.3	-0.1	0.5	0.2	0.3	0.1

RETAIL TURNOVER, By Industry Group(a)—New South Wales: All series

Month	Food retailing	Department stores	Clothing and soft good retailing	Household good retailing	Recreational good retailing	Other retailing	Hospitality and services	Total
ORIGINAL (\$ million)								
1996								
April	1 346.8	301.9	262.3	377.0	173.7	313.2	737.4	3 512.3
May	1 396.1	336.3	274.6	407.3	181.0	326.4	723.0	3 644.7
June	1 341.2	314.2	256.0	404.1	182.1	302.9	693.7	3 494.2
July	1 367.6	315.0	280.0	439.9	194.6	326.7	709.1	3 632.9
August	1 416.3	303.5	257.1	396.3	206.0	334.6	727.0	3 640.8
September	1 347.0	288.5	252.8	390.7	202.5	325.5	686.1	3 493.1
October	1 439.6	320.2	269.7	422.4	196.7	348.0	719.5	3 716.1
November	1 443.3	370.4	271.5	420.8	217.6	360.1	723.7	3 807.4
December	1 583.5	645.9	393.7	533.5	296.1	482.7	796.4	4 731.8
1997								
January	1 445.8	284.9	270.2	376.9	190.0	312.3	722.7	3 602.8
February	1 316.0	249.4	213.9	382.3	189.5	293.4	646.1	3 290.6
March	1 447.2	285.0	232.2	399.0	201.3	305.5	704.6	3 574.8
April	1 381.2	281.7	258.1	369.4	191.3	312.3	691.5	3 485.5
May	1 446.7	337.5	289.3	413.9	200.1	320.6	705.1	3 713.2
June	1 346.8	287.2	255.9	404.9	197.9	308.6	690.6	3 491.9
SEASONALLY ADJUSTED (\$ million)								
1996								
April	1 372.2	331.5	261.7	413.0	186.6	336.3	747.1	3 648.4
May	1 408.2	329.4	257.9	405.6	183.7	340.9	727.0	3 652.6
June	1 406.4	332.8	253.8	430.1	198.3	338.2	726.1	3 685.6
July	1 393.0	358.2	286.1	447.8	194.9	351.4	718.6	3 750.0
August	1 428.8	344.6	281.9	415.8	216.2	341.8	738.4	3 767.5
September	1 393.3	316.9	273.7	406.5	212.5	327.7	711.2	3 641.7
October	1 410.5	317.6	267.6	413.6	194.0	335.0	708.2	3 646.4
November	1 433.1	335.7	267.1	396.7	204.1	331.1	699.6	3 667.4
December	1 372.4	339.0	277.2	395.2	225.9	337.8	699.4	3 647.0
1997								
January	1 416.3	332.8	277.5	392.7	205.1	332.4	709.3	3 666.2
February	1 416.9	345.7	271.3	433.4	206.0	333.0	712.5	3 718.8
March	1 460.4	335.6	252.3	414.4	199.5	329.8	706.3	3 698.3
April	1 396.2	305.1	259.9	401.9	202.4	335.5	689.8	3 590.7
May	1 468.7	328.9	272.8	414.7	207.4	334.3	710.5	3 737.2
June	1 414.9	311.0	251.3	430.4	212.2	348.6	731.0	3 699.5
TREND ESTIMATES (\$ million)								
1996								
April	1 390.6	336.0	266.2	412.4	187.9	337.0	747.3	3 677.4
May	1 397.3	336.9	266.5	419.8	190.7	339.3	738.8	3 689.3
June	1 403.1	337.4	268.1	424.4	195.0	340.8	730.7	3 699.5
July	1 406.9	336.9	270.6	425.4	199.8	340.9	724.2	3 704.6
August	1 408.9	335.0	272.9	421.6	203.9	339.5	718.9	3 700.8
September	1 408.5	332.4	274.7	414.4	207.1	337.2	714.0	3 688.4
October	1 407.7	331.3	275.1	407.4	209.0	334.9	710.0	3 675.3
November	1 407.1	331.8	273.7	402.9	209.5	333.3	706.7	3 665.0
December	1 409.4	333.5	271.8	402.0	208.7	332.4	704.0	3 661.8
1997								
January	1 414.1	335.0	269.9	404.6	207.5	332.3	703.1	3 666.5
February	1 420.5	334.1	268.0	408.5	206.4	332.9	704.0	3 674.4
March	1 426.7	329.9	265.3	412.2	205.6	333.8	705.7	3 679.2
April	1 431.7	324.8	262.4	415.6	205.2	335.5	708.1	3 683.2
May	1 435.1	319.8	260.0	418.8	205.4	337.7	711.4	3 688.2
June	1 439.5	315.6	257.6	421.7	205.8	340.0	715.1	3 695.2

(a) See paragraph 3 of the Explanatory Notes

RETAIL TURNOVER, By Industry Group(a)—Victoria: All series

Month	Food retailing	Department stores	Clothing and soft good retailing	Household good retailing	Recreational good retailing	Other retailing	Hospitality and services	Total
ORIGINAL (\$ million)								
1996								
April	976.6	220.1	157.9	266.5	124.5	187.0	300.9	2 233.5
May	1 003.4	224.2	157.5	289.0	129.4	200.4	294.6	2 298.5
June	940.2	213.3	146.4	284.5	122.8	182.8	293.9	2 183.9
July	970.7	203.4	147.0	302.6	127.4	201.1	287.7	2 239.9
August	1 014.0	199.7	133.2	299.5	134.0	207.9	279.4	2 267.7
September	950.3	186.2	132.0	270.2	127.3	196.6	284.5	2 147.1
October	1 045.7	203.9	158.3	309.4	149.5	232.2	299.6	2 398.6
November	1 045.2	250.8	149.0	314.8	158.4	246.8	303.0	2 468.0
December	1 161.8	442.4	212.1	402.1	244.7	343.0	346.6	3 152.7
1997								
January	1 091.6	197.4	148.0	320.0	146.2	203.4	309.9	2 416.5
February	991.7	171.9	113.9	295.5	133.6	203.1	274.0	2 183.7
March	1 064.6	214.3	137.9	295.8	140.6	210.7	313.6	2 377.5
April	1 037.9	212.6	169.3	303.7	145.9	226.5	299.2	2 395.1
May	1 085.2	241.0	164.9	304.1	139.1	235.8	291.7	2 461.8
June	1 008.9	200.4	142.0	309.8	132.0	216.7	274.9	2 284.7
SEASONALLY ADJUSTED (\$ million)								
1996								
April	991.1	225.9	148.2	287.5	139.0	201.9	307.0	2 300.6
May	1 004.2	216.8	150.0	293.1	135.4	205.0	305.3	2 309.8
June	993.8	222.6	149.0	294.3	136.7	202.5	304.7	2 303.7
July	994.5	242.7	148.3	298.7	131.2	210.3	294.0	2 319.8
August	1 022.8	226.0	147.6	312.7	142.4	216.6	286.4	2 354.5
September	995.8	208.8	150.1	288.8	137.1	207.7	289.0	2 277.3
October	1 024.3	205.0	158.5	295.7	149.7	219.7	300.3	2 353.1
November	1 041.2	228.9	148.0	308.5	145.8	225.6	287.3	2 385.3
December	1 010.9	235.6	142.5	299.3	168.6	225.1	290.4	2 372.6
1997								
January	1 071.4	228.6	158.3	323.6	139.1	230.7	308.8	2 460.5
February	1 061.8	238.9	144.5	339.3	146.1	240.8	306.3	2 477.5
March	1 061.5	253.8	158.2	314.0	153.6	228.9	314.9	2 485.0
April	1 054.7	215.3	153.4	326.8	159.3	239.3	306.1	2 454.9
May	1 077.5	233.8	154.9	311.1	149.5	244.7	298.4	2 470.0
June	1 075.9	211.1	146.0	317.8	146.1	241.6	287.1	2 425.7
TREND ESTIMATES (\$ million)								
1996								
April	994.3	224.4	148.9	289.4	140.9	204.9	303.4	2 306.3
May	996.8	225.2	148.4	293.0	137.4	204.8	302.5	2 308.1
June	999.5	225.1	148.8	296.2	135.2	205.9	300.1	2 310.8
July	1 002.3	223.8	149.3	298.0	135.9	208.2	296.5	2 314.0
August	1 006.2	221.7	150.0	298.3	138.8	211.1	293.1	2 319.2
September	1 012.1	219.9	150.3	298.9	142.7	214.8	290.7	2 329.4
October	1 020.3	220.3	150.4	301.1	146.3	219.0	290.9	2 348.3
November	1 029.9	223.4	150.3	305.5	149.1	223.0	293.8	2 375.0
December	1 039.8	228.7	150.6	311.6	150.9	227.0	298.4	2 406.9
1997								
January	1 048.7	233.9	151.1	317.4	151.6	230.7	302.9	2 436.3
February	1 056.3	236.4	151.8	321.4	151.6	233.9	305.5	2 456.8
March	1 062.2	234.9	152.4	322.6	151.4	236.4	305.8	2 465.7
April	1 067.1	231.3	152.7	321.9	151.2	238.8	304.3	2 467.2
May	1 071.4	226.8	152.6	320.3	150.9	241.0	301.5	2 464.5
June	1 075.8	222.4	152.0	318.9	149.8	242.8	297.8	2 459.4

(a) See paragraph 3 of the Explanatory Notes

RETAIL TURNOVER, By Industry Group(a)--Queensland: All series

Month	Food retailing	Department stores	Clothing and soft good retailing	Household good retailing	Recreational good retailing	Other retailing	Hospitality and services	Total
ORIGINAL (\$ million)								
1996								
April	718.8	141.8	111.3	147.5	115.6	170.0	314.3	1 719.3
May	747.7	159.9	129.6	176.8	119.4	186.0	311.6	1 831.0
June	712.4	153.8	122.5	170.8	117.3	176.0	315.9	1 768.7
July	766.0	158.2	120.0	188.9	112.4	191.5	335.4	1 872.4
August	784.0	156.5	124.8	182.2	105.2	190.1	338.9	1 881.7
September	744.3	152.1	133.3	171.3	99.0	188.4	319.7	1 808.1
October	777.5	164.5	138.9	171.6	101.6	192.9	347.6	1 894.6
November	764.3	187.3	135.0	184.3	108.7	194.9	338.5	1 913.0
December	809.4	305.4	179.1	229.9	148.2	255.2	389.2	2 316.4
1997								
January	774.9	148.5	128.0	175.7	114.8	191.3	364.2	1 897.4
February	693.0	120.3	95.9	165.0	97.2	179.6	315.1	1 666.1
March	762.2	139.5	103.2	161.5	104.6	185.1	348.8	1 804.9
April	734.0	135.4	111.7	164.6	102.5	194.5	346.7	1 789.4
May	776.6	161.5	134.9	175.8	103.1	208.4	360.3	1 920.6
June	731.9	136.5	120.8	170.1	104.9	191.0	347.4	1 802.6
SEASONALLY ADJUSTED (\$ million)								
1996								
April	739.1	159.9	118.5	164.1	128.6	191.4	332.0	1 833.6
May	741.5	159.8	127.7	181.0	126.4	190.0	324.5	1 850.9
June	744.0	155.6	125.0	178.8	130.9	194.5	336.1	1 864.9
July	758.8	184.1	121.5	194.1	115.5	200.8	335.3	1 910.0
August	778.9	170.8	131.6	194.0	113.2	191.0	334.9	1 914.4
September	765.9	157.8	130.7	179.6	106.5	191.6	324.2	1 856.3
October	750.0	160.9	134.4	167.7	104.5	180.4	335.4	1 833.3
November	760.4	165.4	132.0	174.0	103.7	188.3	329.6	1 853.5
December	744.1	171.7	129.6	171.6	94.6	174.0	315.6	1 801.3
1997								
January	752.9	167.1	125.5	178.9	107.9	200.0	350.2	1 882.6
February	755.4	163.5	123.1	184.7	107.3	213.1	361.9	1 908.9
March	769.5	172.3	118.4	164.8	113.7	204.8	366.6	1 910.1
April	746.2	149.0	117.5	183.5	112.8	217.0	365.5	1 891.6
May	773.2	160.9	134.2	179.3	113.1	217.9	377.3	1 955.9
June	767.1	141.5	123.7	177.1	114.4	210.5	368.4	1 902.7
TREND ESTIMATES (\$ million)								
1996								
April	737.2	161.5	125.0	176.6	128.6	192.6	330.9	1 852.4
May	744.5	162.9	124.6	179.8	126.7	194.5	331.3	1 864.2
June	752.1	164.6	125.1	182.9	123.5	195.1	332.4	1 875.7
July	758.5	166.1	126.7	184.7	118.9	193.9	332.6	1 881.4
August	762.2	166.9	128.9	184.1	113.4	191.3	331.1	1 877.8
September	762.3	166.5	130.9	181.5	108.0	188.1	329.3	1 866.6
October	759.8	166.2	131.8	178.0	104.0	185.9	328.6	1 854.3
November	756.3	166.1	130.9	175.1	102.2	186.0	330.5	1 847.0
December	753.5	166.6	128.6	174.0	102.6	189.4	336.0	1 850.7
1997								
January	753.1	166.8	125.8	174.8	104.7	195.7	344.4	1 865.4
February	755.3	165.7	123.8	176.4	107.5	202.7	353.7	1 885.1
March	758.4	162.5	122.9	177.4	110.2	208.7	361.9	1 902.0
April	761.5	158.4	123.0	177.9	112.5	213.0	368.4	1 914.7
May	764.7	154.2	123.7	178.3	114.2	216.0	373.4	1 924.4
June	768.9	150.2	124.9	178.8	115.8	218.5	377.3	1 934.3

(a) See paragraph 3 of the Explanatory Notes

RETAIL TURNOVER, By Industry Group(a)—South Australia: All series

Month	Food retailing	Department stores	Clothing and soft good retailing	Household good retailing	Recreational good retailing	Other retailing	Hospitality and services	Total
ORIGINAL (\$ million)								
1996								
April	300.2	90.6	42.5	73.5	32.6	64.4	134.6	738.4
May	321.5	91.9	42.4	76.1	32.1	72.4	131.7	768.1
June	300.3	87.5	41.0	73.3	30.7	65.6	129.5	727.9
July	316.7	90.6	40.6	78.8	33.9	60.7	125.4	746.7
August	329.4	86.8	34.8	79.6	33.7	63.5	128.7	756.5
September	310.7	80.4	32.9	72.5	32.6	58.5	129.0	716.6
October	344.1	93.0	36.5	73.1	36.2	60.3	127.4	770.6
November	336.4	105.6	36.8	75.1	37.9	60.9	134.8	787.5
December	312.8	170.4	51.1	95.2	54.8	85.8	169.9	1 000.0
1997								
January	343.9	79.3	36.7	66.5	32.2	57.0	136.8	752.4
February	310.3	69.7	27.6	63.3	27.4	52.9	121.8	673.0
March	342.2	82.7	34.3	66.4	30.6	56.6	126.4	739.2
April	324.7	86.2	44.8	69.9	31.3	61.1	122.7	740.7
May	337.3	96.2	44.6	73.5	30.5	66.8	126.0	774.9
June	312.5	80.0	39.9	71.1	28.1	59.4	126.0	717.0
SEASONALLY ADJUSTED (\$ million)								
1996								
April	306.1	95.4	39.7	79.1	34.3	68.8	137.6	761.0
May	320.7	90.6	41.0	78.1	33.1	72.7	139.3	775.6
June	317.9	93.8	41.7	77.0	34.4	69.7	144.4	778.9
July	322.3	99.5	41.0	77.7	36.2	62.8	133.5	773.0
August	335.0	95.7	37.8	81.6	35.5	64.1	137.1	786.8
September	324.5	89.6	35.0	77.0	35.0	58.5	134.7	754.2
October	336.1	91.1	35.5	69.1	36.9	58.4	120.1	747.1
November	331.9	94.5	35.7	71.5	37.1	58.0	126.7	755.5
December	314.2	94.9	36.6	71.9	37.6	65.0	137.3	757.4
1997								
January	347.9	92.4	40.0	67.8	31.6	59.8	131.9	771.4
February	340.1	94.6	36.1	73.8	30.3	61.3	130.9	767.1
March	338.4	96.3	37.0	72.8	31.2	61.1	128.4	765.1
April	331.3	88.9	42.1	72.3	32.5	64.5	123.4	754.9
May	336.0	95.0	42.8	77.0	31.6	68.3	133.4	784.0
June	333.4	88.0	40.8	74.3	31.9	63.6	143.0	774.9
TREND ESTIMATES (\$ million)								
1996								
April	308.2	94.4	42.7	79.7	34.1	71.6	134.6	765.3
May	313.9	94.5	41.3	79.5	34.2	70.2	137.2	770.9
June	320.1	94.5	40.1	79.0	34.5	67.8	138.3	774.5
July	324.8	94.4	38.9	78.2	35.1	65.1	137.3	773.7
August	327.7	94.0	37.8	76.9	35.8	62.5	134.6	769.3
September	329.2	93.5	36.9	75.3	36.4	60.7	131.8	763.6
October	330.2	93.2	36.2	73.4	36.4	59.7	130.2	759.4
November	331.5	93.2	35.9	71.7	35.9	59.6	129.7	757.5
December	333.2	93.4	36.3	70.7	34.8	60.1	129.6	758.3
1997								
January	334.8	93.9	37.2	70.8	33.6	61.0	129.7	761.0
February	336.1	93.9	38.2	71.7	32.5	62.0	130.0	764.5
March	336.6	93.4	39.2	72.8	31.7	63.0	130.4	767.1
April	336.5	92.6	40.2	73.7	31.4	63.9	131.3	769.4
May	336.0	91.7	41.1	74.5	31.3	64.7	132.7	771.9
June	335.7	90.9	41.8	75.3	31.3	65.3	134.2	774.5

(a) See paragraph 3 of the Explanatory Notes

RETAIL TURNOVER, By Industry Group(a)—Western Australia: All series

Month	Food retailing	Department stores	Clothing and soft good retailing	Household good retailing	Recreational good retailing	Other retailing	Hospitality and services	Total
ORIGINAL (\$ million)								
1996								
April	423.7	91.6	62.5	102.1	55.9	89.6	164.6	990.0
May	436.6	99.9	69.6	108.3	57.5	98.4	162.3	1 032.6
June	400.6	90.3	67.5	108.0	50.5	92.6	158.5	968.0
July	420.5	93.6	64.7	127.7	53.4	88.5	150.6	999.0
August	431.1	94.2	60.7	130.6	52.1	84.0	151.8	1 004.5
September	406.6	82.2	55.9	111.5	51.2	81.0	146.5	934.9
October	445.0	101.3	68.4	138.8	55.6	94.6	154.3	1 058.0
November	442.0	109.6	67.0	138.2	53.0	94.3	153.3	1 057.4
December	501.1	176.8	88.1	163.7	68.2	121.1	168.4	1 287.4
1997								
January	468.6	86.4	62.2	146.7	51.1	83.8	156.6	1 054.4
February	422.1	76.2	48.3	127.6	46.9	82.8	143.8	947.7
March	459.6	89.1	54.5	125.7	47.8	77.5	152.6	1 006.8
April	420.6	88.5	57.1	137.3	56.2	91.5	155.2	1 006.4
May	447.8	107.0	63.0	145.2	56.7	92.7	155.2	1 067.6
June	410.3	81.2	51.0	135.9	52.7	80.7	149.7	961.5
SEASONALLY ADJUSTED (\$ million)								
1996								
April	433.9	95.5	65.2	110.4	60.5	99.3	169.6	1 034.5
May	436.8	94.7	65.6	107.9	61.1	101.4	170.2	1 037.7
June	424.1	93.8	67.1	107.9	56.4	102.7	174.3	1 026.3
July	425.5	105.7	65.2	125.9	52.7	90.2	152.8	1 018.0
August	436.8	110.1	64.8	140.7	54.2	85.5	157.6	1 049.7
September	419.7	92.3	59.1	117.4	53.4	80.5	146.9	969.3
October	442.6	100.1	65.2	134.8	55.1	89.6	147.7	1 035.0
November	435.1	98.8	65.7	133.0	50.8	88.5	145.2	1 017.1
December	432.5	99.1	61.7	124.1	46.2	84.1	146.8	994.5
1997								
January	460.7	99.2	64.7	148.6	52.8	89.9	150.3	1 066.0
February	451.9	102.9	60.7	142.6	52.1	98.7	155.6	1 064.5
March	460.6	102.6	63.6	137.0	51.8	87.4	151.7	1 054.7
April	422.8	90.7	59.5	149.2	59.6	100.1	158.5	1 040.4
May	451.0	101.2	58.8	144.3	61.4	95.5	162.9	1 075.0
June	440.8	85.9	51.2	134.8	60.2	89.8	166.3	1 029.0
TREND ESTIMATES (\$ million)								
1996								
April	438.0	96.0	64.8	110.7	58.2	98.0	171.9	1 037.7
May	433.7	97.2	65.5	112.2	57.8	98.0	169.8	1 034.2
June	430.2	98.8	65.6	116.2	57.1	95.9	165.6	1 029.3
July	428.1	100.2	65.0	120.9	55.9	92.8	160.3	1 023.2
August	428.1	100.8	64.3	125.2	54.4	89.2	154.8	1 016.8
September	429.9	100.6	63.8	128.7	53.0	86.4	150.3	1 012.7
October	434.0	100.1	63.5	131.2	51.8	85.4	147.4	1 013.5
November	439.2	99.6	63.5	133.1	50.9	86.2	146.5	1 019.1
December	444.1	99.7	63.6	135.4	50.5	88.3	147.4	1 029.1
1997								
January	447.4	100.0	63.4	138.3	51.0	90.6	149.6	1 040.3
February	448.6	99.9	62.5	141.0	52.5	92.4	152.4	1 049.4
March	447.7	98.7	61.0	142.4	54.7	93.6	155.5	1 053.8
April	446.0	96.9	59.3	142.9	57.1	94.3	158.6	1 055.1
May	444.3	94.9	57.5	142.8	59.2	94.7	161.6	1 055.0
June	442.5	92.8	55.8	142.3	61.2	94.7	164.2	1 053.6

(a) See paragraph 3 of the Explanatory Notes

RETAIL TURNOVER, By Industry Group(a)—Tasmania: All series

Month	Food retailing	Department stores	Clothing and soft good retailing	Household good retailing	Recreational good retailing	Other retailing	Hospitality and services	Total
ORIGINAL (\$ million)								
1996								
April	102.6	n.p.	16.2	24.0	13.6	n.p.	39.3	237.8
May	107.4	n.p.	15.9	26.8	13.9	n.p.	41.4	250.3
June	99.6	n.p.	16.0	24.5	12.1	n.p.	36.7	230.6
July	102.9	n.p.	14.8	23.1	12.5	n.p.	34.2	229.1
August	107.0	n.p.	14.6	23.1	12.9	n.p.	35.8	238.2
September	99.7	n.p.	13.3	23.0	12.3	n.p.	34.1	222.5
October	105.7	n.p.	14.7	29.6	13.3	n.p.	39.1	249.1
November	106.7	n.p.	16.2	30.3	14.3	n.p.	40.2	257.9
December	118.1	n.p.	23.0	38.2	21.1	n.p.	48.0	324.3
1997								
January	110.7	n.p.	14.0	22.1	15.2	n.p.	39.9	247.4
February	99.6	n.p.	11.8	21.8	15.3	n.p.	34.9	224.7
March	109.0	n.p.	13.7	21.4	13.1	n.p.	37.0	242.2
April	106.2	n.p.	14.4	24.8	15.6	n.p.	38.6	245.9
May	111.7	n.p.	14.6	24.5	14.7	n.p.	36.9	254.0
June	103.0	n.p.	12.5	24.8	13.8	n.p.	34.4	234.2
SEASONALLY ADJUSTED (\$ million)								
1996								
April	106.1	n.p.	15.2	25.0	14.9	n.p.	40.7	246.3
May	108.6	n.p.	14.9	25.1	14.4	n.p.	44.2	251.1
June	105.3	n.p.	16.2	25.6	13.6	n.p.	40.2	247.3
July	104.5	n.p.	15.2	23.1	13.6	n.p.	37.5	239.9
August	106.7	n.p.	15.8	23.0	13.8	n.p.	36.5	244.8
September	104.8	n.p.	15.9	24.2	13.4	n.p.	37.0	239.5
October	104.0	n.p.	15.6	29.0	13.4	n.p.	38.5	246.6
November	103.7	n.p.	15.9	29.6	13.9	n.p.	38.4	248.2
December	103.3	n.p.	15.8	28.8	14.2	n.p.	39.1	248.0
1997								
January	109.3	n.p.	14.9	24.1	15.4	n.p.	37.2	248.5
February	105.0	n.p.	13.7	25.8	15.1	n.p.	35.9	246.5
March	110.4	n.p.	14.7	23.0	13.9	n.p.	36.9	252.0
April	107.8	n.p.	13.4	26.2	16.4	n.p.	39.7	251.4
May	112.5	n.p.	13.8	23.6	15.6	n.p.	38.5	254.5
June	111.1	n.p.	12.7	25.4	15.7	n.p.	38.3	254.8
TREND ESTIMATES (\$ million)								
1996								
April	106.0	n.p.	15.3	25.2	14.9	n.p.	40.8	247.3
May	106.2	n.p.	15.4	24.7	14.4	n.p.	40.7	246.7
June	106.2	n.p.	15.5	24.3	13.9	n.p.	39.9	245.5
July	105.8	n.p.	15.6	24.3	13.6	n.p.	38.9	244.3
August	105.2	n.p.	15.8	24.9	13.5	n.p.	38.1	243.7
September	104.6	n.p.	15.8	25.9	13.5	n.p.	37.7	243.8
October	104.4	n.p.	15.8	26.9	13.7	n.p.	37.6	244.7
November	104.5	n.p.	15.6	27.4	14.0	n.p.	37.7	246.0
December	105.1	n.p.	15.4	27.3	14.3	n.p.	37.8	247.3
1997								
January	106.1	n.p.	15.0	26.6	14.6	n.p.	37.7	248.5
February	107.3	n.p.	14.5	25.6	14.9	n.p.	37.6	249.5
March	108.6	n.p.	14.1	24.9	15.2	n.p.	37.7	250.6
April	109.7	n.p.	13.7	24.5	15.4	n.p.	38.0	251.9
May	110.7	n.p.	13.4	24.4	15.6	n.p.	38.3	253.3
June	111.5	n.p.	13.1	24.4	15.7	n.p.	38.5	254.5

(a) See paragraph 3 of the Explanatory Notes

RETAIL TURNOVER, By Industry Group(a)—Northern Territory: All series

Month	Food retailing	Department stores	Clothing and soft good retailing	Household good retailing	Recreational good retailing	Other retailing	Hospitality and services	Total
ORIGINAL (\$ million)								
1996								
April	61.4	n.p.	6.6	7.0	6.3	n.p.	17.1	112.6
May	63.4	n.p.	6.9	8.1	6.4	n.p.	17.9	119.0
June	64.6	n.p.	7.3	7.9	6.4	n.p.	16.7	119.2
July	67.8	n.p.	7.2	8.4	7.1	n.p.	21.1	126.3
August	68.0	n.p.	7.2	8.5	6.6	n.p.	20.1	125.7
September	63.9	n.p.	6.6	8.4	5.9	n.p.	17.7	116.1
October	63.4	n.p.	6.0	9.0	6.7	n.p.	19.3	119.6
November	58.5	n.p.	5.3	8.6	5.7	n.p.	17.6	113.2
December	61.0	n.p.	7.5	9.2	6.3	n.p.	18.3	125.2
1997								
January	53.8	n.p.	4.6	7.4	5.0	n.p.	16.1	100.0
February	50.6	n.p.	3.8	7.8	4.6	n.p.	16.0	95.1
March	55.1	n.p.	4.2	7.8	4.7	n.p.	17.0	101.7
April	55.7	n.p.	5.2	7.8	6.2	n.p.	17.9	105.6
May	57.2	n.p.	5.7	8.2	6.5	n.p.	19.0	110.7
June	56.4	n.p.	5.6	7.7	7.3	n.p.	19.7	110.7

SEASONALLY ADJUSTED (\$ million)

1996								
April	64.5	n.p.	7.5	8.0	6.6	n.p.	18.2	120.5
May	63.3	n.p.	7.1	8.2	6.5	n.p.	18.0	119.2
June	65.6	n.p.	7.0	7.5	6.3	n.p.	18.6	120.1
July	62.0	n.p.	5.8	8.2	6.4	n.p.	19.0	115.5
August	63.4	n.p.	6.5	8.4	6.0	n.p.	18.5	117.2
September	63.9	n.p.	6.5	8.7	5.4	n.p.	16.7	114.6
October	60.4	n.p.	5.6	8.7	6.1	n.p.	17.7	113.2
November	58.3	n.p.	5.4	8.1	5.7	n.p.	17.7	111.8
December	57.8	n.p.	5.8	7.7	5.5	n.p.	17.2	109.4
1997								
January	57.8	n.p.	5.3	8.5	6.3	n.p.	18.5	112.8
February	56.9	n.p.	5.2	9.0	5.6	n.p.	19.7	112.3
March	56.8	n.p.	5.0	7.7	5.3	n.p.	17.5	107.2
April	58.2	n.p.	6.0	8.8	6.4	n.p.	19.2	112.7
May	57.1	n.p.	6.0	8.1	6.8	n.p.	19.0	111.1
June	57.5	n.p.	5.2	7.5	7.3	n.p.	19.4	111.7

TREND ESTIMATES (\$ million)

1996								
April	64.2	n.p.	7.4	7.8	6.5	n.p.	18.3	120.4
May	64.3	n.p.	7.1	7.9	6.4	n.p.	18.4	119.7
June	64.2	n.p.	6.8	8.0	6.3	n.p.	18.4	118.8
July	63.8	n.p.	6.5	8.2	6.2	n.p.	18.3	117.5
August	63.0	n.p.	6.2	8.3	6.0	n.p.	18.0	116.0
September	62.0	n.p.	6.0	8.4	5.9	n.p.	17.8	114.5
October	60.7	n.p.	5.8	8.4	5.8	n.p.	17.6	113.2
November	59.4	n.p.	5.6	8.4	5.7	n.p.	17.7	112.2
December	58.2	n.p.	5.5	8.4	5.7	n.p.	17.9	111.4
1997								
January	57.5	n.p.	5.4	8.3	5.7	n.p.	18.2	110.9
February	57.3	n.p.	5.4	8.4	5.8	n.p.	18.6	110.8
March	57.3	n.p.	5.5	8.3	6.0	n.p.	18.7	110.9
April	57.3	n.p.	5.5	8.2	6.3	n.p.	18.9	111.0
May	57.4	n.p.	5.6	8.1	6.6	n.p.	19.1	111.2
June	57.5	n.p.	5.6	8.0	6.9	n.p.	19.2	111.4

(a) See paragraph 3 of the Explanatory Notes

RETAIL TURNOVER, By Industry Group(a)—Australian Capital Territory: All series

Month	Food retailing	Department stores	Clothing and soft good retailing	Household good retailing	Recreational good retailing	Other retailing	Hospitality and services	Total
ORIGINAL (\$ million)								
1996								
April	75.8	23.6	16.5	16.4	10.2	15.1	29.3	186.9
May	81.3	23.6	16.4	16.1	10.9	15.3	29.4	193.0
June	76.6	23.6	15.8	16.0	9.9	14.4	27.9	184.2
July	79.0	22.2	15.4	17.4	9.1	14.5	31.0	188.6
August	82.0	20.8	13.8	17.4	9.4	16.5	30.7	190.6
September	77.4	20.3	14.6	18.6	9.2	17.3	30.4	187.8
October	80.3	22.8	14.6	19.1	9.1	18.3	31.9	196.1
November	81.1	25.2	13.8	20.8	10.9	20.5	31.4	203.7
December	87.4	45.3	20.9	27.4	19.8	26.3	32.5	259.6
1997								
January	73.9	20.1	13.6	20.5	11.2	16.8	28.3	184.4
February	69.1	18.1	11.0	18.8	9.9	15.6	26.6	169.1
March	75.1	21.3	12.2	19.1	11.7	18.0	27.5	184.9
April	71.4	20.6	15.0	19.7	11.3	19.5	29.9	187.4
May	76.7	24.5	16.5	20.1	12.6	20.3	30.8	201.5
June	70.9	20.0	14.1	21.6	11.7	18.1	28.3	184.7
SEASONALLY ADJUSTED (\$ million)								
1996								
April	77.4	23.9	15.2	17.0	11.0	15.4	28.8	188.7
May	80.2	22.5	15.6	16.2	11.5	16.0	29.4	191.3
June	80.5	24.6	15.9	16.9	11.0	16.7	29.1	194.7
July	81.5	23.6	16.1	17.0	9.7	16.4	30.3	194.5
August	82.3	24.9	15.7	17.3	9.5	16.6	30.6	196.9
September	80.1	23.4	15.6	20.3	9.4	17.6	31.0	197.4
October	77.6	22.3	15.0	18.7	9.0	16.5	29.9	188.9
November	79.2	24.1	14.5	20.7	10.1	18.1	29.6	196.3
December	78.1	24.6	14.1	20.5	13.7	17.4	29.7	198.0
1997								
January	74.9	24.0	14.4	20.9	12.6	18.9	32.4	198.3
February	74.1	24.9	13.6	22.0	11.1	19.6	30.9	196.0
March	74.1	24.3	12.9	20.1	11.8	20.0	26.4	189.5
April	72.5	20.5	14.0	20.2	12.0	19.9	29.1	188.3
May	75.3	23.1	15.6	20.5	13.1	21.0	30.1	198.8
June	75.0	21.2	13.9	22.5	13.2	21.3	30.3	197.4
TREND ESTIMATES (\$ million)								
1996								
April	78.9	23.5	15.2	16.4	11.1	15.7	29.1	190.0
May	79.9	23.6	15.5	16.5	10.8	16.0	29.4	191.8
June	80.7	23.7	15.8	16.8	10.4	16.3	29.7	193.4
July	81.0	23.8	15.9	17.4	9.9	16.5	30.0	194.5
August	80.9	23.8	15.7	18.0	9.6	16.8	30.2	195.0
September	80.4	23.7	15.5	18.8	9.7	17.0	30.3	195.4
October	79.4	23.8	15.1	19.6	10.1	17.2	30.5	195.7
November	78.2	23.9	14.6	20.3	10.8	17.6	30.5	195.9
December	76.8	24.1	14.2	20.7	11.4	18.1	30.3	195.6
1997								
January	75.6	24.1	13.9	20.8	11.9	18.7	30.0	195.1
February	74.8	23.9	13.8	20.8	12.1	19.3	29.7	194.5
March	74.2	23.4	13.9	20.9	12.2	19.8	29.5	194.0
April	74.0	22.8	14.0	20.9	12.4	20.4	29.4	193.8
May	73.9	22.2	14.2	21.0	12.5	20.8	29.4	194.0
June	74.1	21.7	14.4	21.2	12.6	21.2	29.4	194.5

(a) See paragraph 3 of the Explanatory Notes

QUARTERLY TURNOVER AT CONSTANT(a) PRICES, By Industry Group(b): All series

Quarter	Food retailing	Department stores	Clothing & soft good retailing	Household good retailing	Recreational good retailing	Other retailing	Hospitality and services	Total
ORIGINAL (\$ million)								
1996								
March	9 826.4	2 177.8	1 752.6	3 052.2	1 367.2	2 184.8	4 182.3	24 543.3
June	9 730.3	2 516.1	1 914.8	3 132.8	1 281.9	2 257.4	4 065.3	24 898.6
September	9 815.4	2 394.5	1 842.0	3 318.7	1 312.3	2 301.8	4 000.1	24 984.8
December	10 488.2	3 501.3	2 201.7	3 806.5	1 631.6	2 809.7	4 287.8	28 726.8
1997								
March	9 914.3	2 208.1	1 666.4	3 287.6	1 282.2	2 220.1	3 978.0	24 556.7
June	9 783.7	2 425.7	1 894.7	3 383.0	1 298.7	2 374.1	3 988.7	25 148.6
SEASONALLY ADJUSTED (\$ million)								
1996								
March	9 932.9	2 655.5	1 952.5	3 222.9	1 419.9	2 391.7	4 275.4	25 850.8
June	9 940.0	2 600.4	1 880.0	3 275.8	1 388.2	2 427.3	4 216.5	25 728.2
September	10 002.9	2 675.4	1 952.4	3 420.8	1 373.3	2 376.3	4 084.5	25 885.6
December	9 943.9	2 646.4	1 917.3	3 349.1	1 385.9	2 361.9	3 949.8	25 554.3
1997								
March	10 098.5	2 700.8	1 868.7	3 560.0	1 344.8	2 452.3	4 102.5	26 127.6
June	10 012.0	2 507.5	1 863.6	3 488.0	1 409.6	2 561.2	4 144.2	25 986.1
TREND ESTIMATES (\$ million)								
1996								
March	9 925.5	2 641.6	1 925.6	3 214.0	1 408.4	2 381.4	4 260.7	25 757.3
June	9 958.6	2 634.6	1 925.9	3 292.5	1 396.5	2 393.7	4 185.9	25 787.8
September	9 976.3	2 656.8	1 923.0	3 366.7	1 378.7	2 385.4	4 082.6	25 769.5
December	10 004.2	2 662.9	1 909.3	3 430.1	1 370.5	2 398.0	4 037.6	25 812.0
1997								
March	10 030.2	2 633.2	1 886.3	3 482.7	1 374.9	2 453.2	4 062.8	25 922.9
June	10 043.4	2 577.6	1 858.7	3 515.0	1 385.4	2 518.9	4 118.3	26 027.7
ORIGINAL (% change from preceding quarter)								
1996								
March	5.5	-38.1	-20.3	-14.0	-16.9	20.7	-9.3	-14.4
June	1.0	15.5	9.3	2.6	-6.2	3.3	-2.8	1.4
September	0.9	-4.8	-3.8	5.9	2.4	2.0	1.6	0.3
December	6.9	46.2	19.5	14.7	24.3	22.1	7.2	15.0
1997								
March	-5.5	-36.9	24.3	-13.6	-21.4	-21.0	-7.2	-14.5
June	-1.3	9.9	13.7	2.9	1.3	6.9	0.3	2.4
SEASONALLY ADJUSTED (% change from preceding quarter)								
1996								
March	0.7	0.4	1.7	2.9	1.4	3.5	0.5	1.3
June	0.1	-2.1	-3.7	1.6	-2.2	1.5	-1.4	-0.5
September	0.6	2.9	3.9	4.4	-1.1	-2.1	-3.1	0.6
December	-0.6	-1.1	-1.8	-2.1	0.9	-0.6	-3.3	-1.3
1997								
March	1.6	2.1	2.5	6.3	-3.0	3.8	3.9	2.2
June	-0.9	-7.2	-0.3	-2.0	4.8	4.4	1.0	-0.5
TREND ESTIMATES (% change from preceding quarter)								
1996								
March	1.0	-0.3	0.2	2.1	0.2	1.1	-0.2	0.7
June	0.3	-0.3	0.0	2.4	-0.8	0.5	-1.8	0.1
September	0.2	0.8	-0.1	2.3	-1.3	0.3	-2.5	-0.1
December	0.3	0.2	-0.7	1.9	-0.6	0.5	-1.1	0.2
1997								
March	0.3	-1.1	-1.2	1.5	0.3	2.3	0.6	0.4
June	0.1	-2.1	-1.5	0.9	0.8	2.7	1.4	0.4

(a) See paragraph 11 of the Explanatory Notes.

(b) See paragraph 3 of the Explanatory Notes.

QUARTERLY TURNOVER AT CONSTANT(a) PRICES, By State: All series

Quarter	New South Wales	Victoria	Queensland	South Australia	Western Australia	Tasmania	Northern Territory	Australian Capital Territory	Australia
ORIGINAL (\$ million)									
1996									
March	8 836.3	5 627.3	4 427.6	1 812.5	2 524.1	600.2	271.2	444.1	24 543.3
June	8 925.4	5 742.9	4 450.3	1 878.1	2 534.0	603.4	288.5	476.0	24 898.6
September	9 012.5	5 648.3	4 639.5	1 857.9	2 470.7	575.3	301.8	478.8	24 984.8
December	10 246.2	6 817.1	5 107.9	2 132.9	2 872.3	695.5	295.5	559.4	28 726.8
1997									
March	8 663.9	5 885.3	4 412.4	1 789.9	2 520.3	591.2	242.8	450.9	24 556.7
June	8 842.3	6 024.7	4 531.4	1 851.5	2 542.4	608.4	265.8	482.1	25 148.6
SEASONALLY ADJUSTED (\$ million)									
1996									
March	9 291.2	5 924.5	4 671.0	1 910.2	2 655.5	621.7	300.3	476.4	25 850.8
June	9 206.6	5 912.4	4 640.1	1 943.4	2 622.1	622.9	296.1	484.5	25 728.2
September	9 348.3	5 907.5	4 743.4	1 939.0	2 559.3	605.3	284.8	498.0	25 885.6
December	9 133.8	6 024.8	4 570.7	1 878.1	2 559.9	619.4	274.9	492.6	25 554.3
1997									
March	9 183.0	6 266.8	4 713.3	1 908.9	2 673.2	620.4	272.1	490.0	26 127.6
June	9 117.9	6 199.5	4 731.8	1 916.0	2 629.3	627.9	273.0	490.7	25 986.1
TREND ESTIMATES (\$ million)									
1996									
March	9 231.1	5 891.2	4 656.1	1 939.2	2 644.4	618.6	298.2	478.5	25 757.3
June	9 282.5	5 898.4	4 668.8	1 930.3	2 609.5	617.9	294.4	486.0	25 787.8
September	9 259.3	5 952.0	4 664.4	1 919.2	2 581.8	614.7	285.5	492.6	25 769.5
December	9 207.0	6 056.7	4 662.7	1 907.7	2 591.7	615.9	277.3	493.6	25 812.0
1997									
March	9 159.6	6 171.1	4 682.1	1 902.1	2 622.7	621.1	272.8	491.7	25 922.9
June	9 111.9	6 250.7	4 709.8	1 906.6	2 653.0	627.4	271.0	489.4	26 027.7
ORIGINAL (% change from previous quarter)									
1996									
March	-13.4	-14.7	-14.2	-18.2	-14.6	-12.7	-13.7	-16.7	-14.4
June	1.0	2.1	0.5	3.6	0.4	0.5	6.4	7.2	1.4
September	1.0	-1.6	4.3	-1.1	-2.5	-4.7	4.6	0.6	0.3
December	13.7	20.7	10.1	14.8	16.3	20.9	-2.1	16.8	15.0
1997									
March	-15.4	-13.7	-13.6	-16.1	-12.3	-15.0	-17.8	-19.4	-14.5
June	2.1	2.4	2.7	3.4	0.9	2.9	9.5	6.9	2.4
SEASONALLY ADJUSTED (% change from previous quarter)									
1996									
March	2.2	1.4	1.2	-2.5	0.8	1.3	2.2	0.7	1.3
June	-0.9	-0.2	-0.7	1.7	-1.3	0.2	-1.4	1.7	-0.5
September	1.5	-0.1	2.2	-0.2	-2.4	-2.8	-3.8	2.8	0.6
December	2.3	2.0	-3.6	-3.1	0.0	2.3	-3.5	-1.1	-1.3
1997									
March	0.5	4.0	3.1	1.6	4.4	0.1	-1.0	-0.5	2.2
June	-0.7	-1.1	0.4	0.4	-1.6	1.2	0.3	0.2	-0.5
TREND ESTIMATES (% change from previous quarter)									
1996									
March	1.6	0.1	0.2	-0.5	0.5	0.6	0.7	0.9	0.7
June	0.6	0.1	0.3	-0.5	-1.3	-0.1	-1.3	1.6	0.1
September	-0.2	0.9	-0.1	-0.6	-1.1	-0.5	-3.0	1.4	-0.1
December	-0.6	1.8	0.0	-0.6	0.4	0.2	-2.9	0.2	0.2
1997									
March	-0.5	1.9	0.4	-0.3	1.2	0.8	-1.6	-0.4	0.4
June	-0.5	1.3	0.6	0.2	1.2	1.0	-0.7	-0.5	0.4

(a) See paragraph 11 of the Explanatory Notes.

EXPLANATORY NOTES

INTRODUCTION

1 This publication presents monthly estimates of the value of turnover of retail businesses classified by industry, and by State. The principal objective of the Retail Trade survey is to show month to month movement of retail turnover.

2 Estimates of turnover contained in this publication are based on a survey of about 7,000 retail and selected service businesses (covering 20,000 outlets). All 'large' businesses are included in the survey, while a sample of about 4,400 'smaller' businesses is selected. The 'large' business' contribution of approximately 54% of the total estimate ensures a highly reliable Australian total turnover estimate.

SCOPE AND COVERAGE

3 The Retail Trade survey covers all employing businesses, with at least one retail establishment. The scope of the survey (classified according to the Australian and New Zealand Standard Industrial Classification [ANZSIC]) is detailed below:

- Food Retailing
 - Supermarkets and grocery stores (5110)
and non-petrol sales of identified convenience stores of petrol stations
 - Takeaway food retailing (5125)
 - Other food retailing
 - Fresh meat, fish and poultry retailing (5121)
 - Fruit and vegetable retailing (5122)
 - Liquor retailing (5123)
 - Bread and cake retailing (5124)
 - Specialised food retailing n.e.c. (5129)
- Department Stores (5210)
- Clothing and Soft Good Retailing
 - Clothing retailing (5221)
 - Other clothing related retailing
 - Footwear retailing (5222)
 - Fabric and other soft good retailing (5223)
- Household Good Retailing
 - Furniture and floorcovering retailing
 - Furniture retailing (5231)
 - Floor covering retailing (5232)
 - Domestic hardware and houseware retailing (5233)
 - Domestic appliance retailing
 - Domestic appliance retailing (5234)
 - Recorded music retailing (5235)
- Recreational Good Retailing
 - Newspaper, book and stationery retailing (5243)
 - Other recreational good retailing
 - Sport and camping equipment retailing (5241)
 - Toy and game retailing (5242)
 - Photographic equipment retailing (5244)
- Other Retailing
 - Pharmaceutical, cosmetic and toiletry retailing (5251)
 - Other retailing
 - Antique and used good retailing (5252)
 - Garden supplies retailing (5253)
 - Flower retailing (5254)
 - Watch and jewellery retailing (5255)
 - Retailing n.e.c. (5259)

EXPLANATORY NOTES

- SCOPE AND COVERAGE *continued*
- Hospitality and Services
 - Hotels and licensed clubs
 - Pubs, taverns and bars (5720)
 - Clubs (Hospitality) (5740)
 - Cafes and restaurants (5730)
 - Selected services
 - Video hire outlets (9511)
 - Hairdressing and beauty salons (9526).
- DEFINITION OF TURNOVER
- 4** Turnover includes retail sales; wholesale sales; takings from repairs, meals and hiring of goods (except for rent, leasing and hiring of land and buildings); and commissions from agency activity (e.g. commissions received from collecting dry cleaning, selling lottery tickets, etc.) and net takings from gaming machines etc.
- SEASONAL ADJUSTMENT
- 5** Seasonal adjustment is a means of removing the estimated effects of normal seasonal variation from the series so that the effects of other influences can be more clearly recognised.
- 6** In the seasonal adjustment of the turnover estimates, account has been taken of both normal seasonal factors and 'trading-day' effects (arising from the varying length of each month and the varying numbers of Sundays, Mondays, Tuesdays, etc. in the month). There is some evidence suggesting possible changes in retail trading patterns, including increased activity on weekends and public holidays. The impact of these changes on the seasonal pattern and trading day component of the data is being investigated and can only be confirmed once sufficient data becomes available. While these changes may impact on the unadjusted and seasonally adjusted data, the trend estimate is less likely to be affected. Further, the seasonal adjustment does not remove from the series the effect of irregular influences (e.g. abnormal weather, industrial disputes). The seasonally adjusted estimates still reflect the sampling and non-sampling errors to which the original estimates are subject.
- 7** The State component series have been seasonally adjusted independently. Therefore, the adjusted components may not add to the Australian Group totals.
- 8** As happens with all seasonally adjusted series, the seasonal factors are reviewed annually to take account of each additional year's data. For Retail Trade, the results of the latest review are shown in the July issue each year.
- TREND ESTIMATES
- 9** Most monthly trend estimates in this publication have been obtained by smoothing the seasonally adjusted series using a centred 13-term Henderson weighted moving average (7-term for quarterly series). However, to estimate the last six monthly trend values (or the last three quarters) a set of asymmetric moving averages have been designed to reduce a small bias associated with estimating these recent values when the trend growth is increasing or decreasing. Overall, revision to the estimates should be reduced, however, there may be a greater revision to the estimates whenever there are large irregular movements in the seasonally adjusted series.
- 10** For further information, see *A Guide to Interpreting Time Series — Monitoring 'Trends': an Overview* (1348.0) or contact the Assistant Director, Time Series Analysis on (06) 252 6345.
- CONSTANT PRICE STATISTICS
- 11** To enable analysis of the movement of retail activity in 'real' terms, estimates of retail turnover at constant (average 1989-90) prices are compiled and published each quarter. Constant price retail turnover series are derived by deflating the original current price series of retail turnover by specially compiled indexes of price change.

EXPLANATORY NOTES

RELIABILITY OF ESTIMATES

12 There are two types of error possible in estimates of retail turnover:

Sampling error which occurs because a sample, rather than the entire population, is surveyed. One measure of the likely difference resulting from not including all establishments in the survey is given by the standard error, see below.

Non sampling error which arises from inaccuracies in collecting, recording and processing the data. The most significant of these errors are: misreporting of data items; deficiencies in coverage; non-response; and processing errors. Every effort is made to minimise reporting error by the careful design of questionnaires, intensive training and supervision of interviewers, and efficient data processing procedures.

STANDARD ERRORS

13 Seasonally adjusted, trend and constant price estimates are also subject to sampling variability. For seasonally adjusted estimates, the standard errors are approximately the same as for the original estimates. For trend estimates, the standard errors are likely to be smaller. For constant price estimates, the standard errors may be up to 10% higher than those for the corresponding current price estimates because of the sampling variability contained in the prices data used to deflate the current price estimates.

14 To assist users in assessing the reliability of estimates, each data series has been given a grading of A to D. Where:

- A represents a relative standard error on level of less than 2%. The published estimates are highly reliable for movement analysis;
- B represents a relative standard error on level between 2 and 5%, meaning the estimate is reliable for movement analysis purposes;
- C represents a relative standard error on level between 5 and 10%, meaning users are advised to exercise some caution in interpreting movements for such series; and
- D represents a relative standard error on level greater than 10% (mainly affects unpublished state by industry series).

15 The table below provides an indicator of reliability for key retail turnover estimates.

	Food retailing	Department stores	Clothing and soft good retailing	Household good retailing	Recreational good retailing	Other retailing	Hospitality and services	Total
NSW	B	A	B	C	C	C	C	A
Vic	B	A	B	C	C	C	C	A
Qld	B	A	B	C	C	C	C	A
SA	B	A	B	C	C	C	C	A
WA	B	A	B	C	C	C	C	A
Tas	B	—	B	C	C	—	C	B
NT	B	—	B	C	C	—	C	B
ACT	B	A	B	C	C	C	C	A
Australia	A	A	A	B	B	B	B	A

EXPLANATORY NOTES

UNPUBLISHED DATA

16 The Retail Survey Special Data Service provides additional retail trade statistics which include further State industry dissections through to 'top ten' industry reports. For more information, contact the Retail Trade Special Data Services manager on (06) 252 5220.

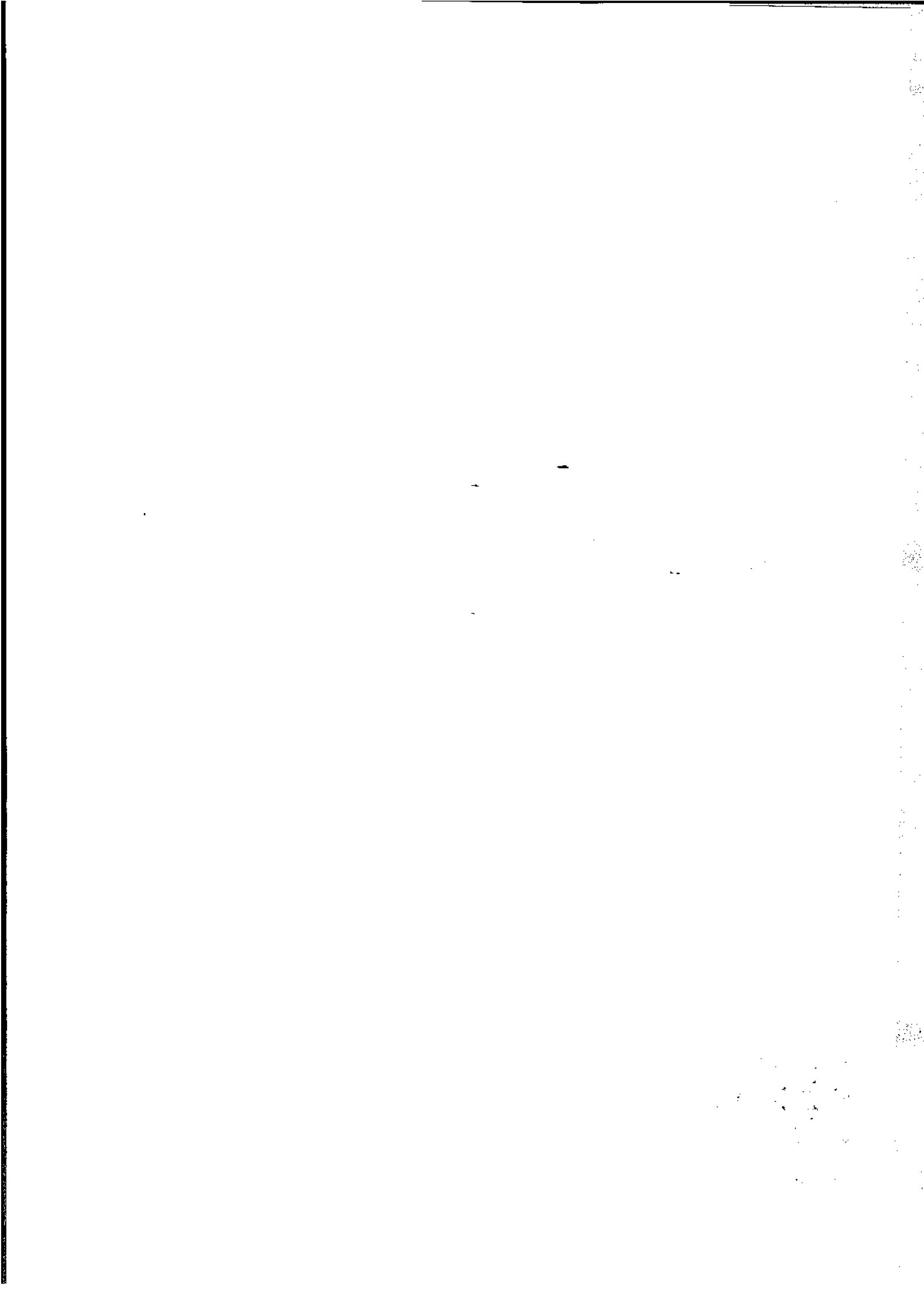
RELATED PUBLICATIONS

17 Current publications produced by the ABS are listed in the *Catalogue of Publications and Products, Australia* (1101.0). The ABS also issues, on Tuesdays and Fridays, a *Release Advice* (1105.0) which lists publications to be released in the next few days. The Catalogue and Release Advice are available from any ABS office.

SYMBOLS AND OTHER USAGES

n.p. not available for publication, but included in totals
r revised







FOR MORE INFORMATION...

The ABS publishes a wide range of information on Australia's economic and social conditions. A catalogue of publications and products is available from any of our offices (see below).

INFORMATION CONSULTANCY SERVICES

Information tailored to special needs of clients can be obtained from the Information Consultancy Service available at ABS Offices (see below).

ABS PRODUCTS

A large number of ABS products is available from the ABS Bookshops (see below). The ABS also provides a subscription service – you can telephone the ABS Subscription Service Australia wide toll free on 1800 0206 08.

ELECTRONIC SERVICES

A large range of data is available via on-line services, diskette, magnetic tape, tape cartridge and CD ROM. For more details about our electronic data services, contact any ABS office (see below) or e-mail us at:

- * client.services@abs.gov.au

GENERAL SALES AND INQUIRIES

- * Sydney 02 9268 4611
- * Melbourne 03 9615 7755
- * Brisbane 07 3222 6351
- * Perth 08 9360 5140
- * Adelaide 08 8237 7100
- * Hobart 03 6222 5800
- * Darwin 08 8943 2111
- * Canberra 06 252 6627
- Information Services, ABS
PO Box 10, Belconnen ACT 2616



2850100006970

ISSN 1032-3651

RRP \$16.50

© Commonwealth of Australia 1997

Produced by the Australian Bureau of Statistics