

## **VALUE OF AGRICULTURAL COMMODITIES PRODUCED, TASMANIA, 1992-93**

### **MAIN FEATURES**

- The gross Value of Agricultural Commodities Produced (VACP) for Tasmania in 1992-93 was \$568.7m, nearly seven per cent more than for 1991-92 (\$533.5m).
- The gross VACP for the major sectors of production for 1992-93 were:
  - \$245.4m for crops, nearly eight per cent more than the \$227.4m recorded in 1991-92;
  - \$136m for livestock slaughtering and other disposals, an increase of eight per cent over the 1991-92 value (\$125.7m); and
  - \$187.3m for livestock products, four per cent more than the \$180.4m recorded in 1991-92.
- The value of fruit production (mainly apples) increased by 12 per cent from \$40.8m in 1991-92 to \$45.8m in 1992-93.
- Over the same period the value of vegetables harvested (mainly potatoes, brown and white onions and peas) increased slightly to \$106.7m in 1992-93. The value of onion production fell by 20 per cent to \$17.8m from 1991-92 to 1992-93 whilst potato production increased by nearly four per cent to \$53.7m.
- There was a 51 per cent increase in the value of sheep and lambs slaughtered from \$8.9m in 1991-92 to \$13.4m in 1992-93.
- The value of wool production fell by 20 per cent from \$78.7m in 1991-92 to \$62.7m in 1992-93. Over the same period the value of whole milk production rose by 26 per cent to \$116m.

**William P. McReynolds**  
Deputy Commonwealth Statistician and  
Statistician of the State of Tasmania

### **INQUIRIES**

Inquiries concerning these statistics, and other unpublished data, may be made by telephoning Hobart (002) 20 5896 (Geoff Ellerton).  
For other general inquiries, including copies of publications, telephone the Information Officer on Hobart (002) 20 5800.  
The Tasmanian Office of the Bureau is located on the 1st Floor, 175 Collins Street, Hobart (GPO Box 66A, Hobart, 7001).

TABLE 1. GROSS AND LOCAL VALUES OF AGRICULTURAL COMMODITIES, TASMANIA

(\$ million)

<i>Particulars</i>	<i>1987-88</i>	<i>1988-89</i>	<i>1989-90</i>	<i>1990-91</i>	<i>1991-92</i>	<i>1992-93</i>
<b>CROPS (a)</b>						
<b>Gross value of production</b>	<b>189.4</b>	<b>233.4</b>	<b>221.9</b>	<b>209.1</b>	<b>227.4</b>	<b>245.4</b>
<i>Less marketing costs</i>	20.2	20.0	21.8	16.3	23.4	25.4
Local value of production	169.2	213.3	200.1	192.8	204.0	220.0
<b>LIVESTOCK SLAUGHTERINGS AND OTHER DISPOSALS</b>						
<b>Gross value of production</b>	<b>120.0</b>	<b>122.1</b>	<b>140.8</b>	<b>125.2</b>	<b>125.7</b>	<b>136.0</b>
<i>Less marketing costs</i>	7.4	8.1	9.1	8.5	8.7	10.1
Local value of production	112.6	114.0	131.7	116.7	117.0	125.9
<b>LIVESTOCK PRODUCTS</b>						
<b>Gross value of production</b>	<b>239.1</b>	<b>247.6</b>	<b>261.0</b>	<b>214.9</b>	<b>180.4</b>	<b>187.3</b>
<i>Less marketing costs</i>	9.0	12.1	12.9	12.1	10.3	9.7
Local value of production	230.0	235.5	248.1	202.9	170.2	177.6
<b>TOTAL AGRICULTURE</b>						
<b>Gross value of production</b>	<b>548.4</b>	<b>603.1</b>	<b>623.7</b>	<b>549.3</b>	<b>533.5</b>	<b>568.7</b>
<i>Less marketing costs</i>	36.6	40.3	43.8	36.9	42.3	45.3
Local value of production	511.9	562.8	579.9	512.4	491.2	523.4

(a) Excludes crops and pasture harvested for green feed or silage.

TABLE 2. AVERAGE UNIT GROSS VALUE OF CROPS (a), TASMANIA

(\$)

<i>Crop</i>	<i>Quantity unit</i>	<i>1987-88</i>	<i>1988-89</i>	<i>1989-90</i>	<i>1990-91</i>	<i>1991-92</i>	<i>1992-93</i>
<b>Cereals for grain -</b>							
Barley	tonnes	156.62	181.22	206.33	188.90	160.42	158.12
Oats	tonnes	108.20	161.11	167.60	147.33	133.47	129.22
Triticale	tonnes	150.92	177.23	180.80	167.40	150.19	155.40
Wheat	tonnes	165.00	187.79	176.80	146.99	170.41	157.93
<b>Legumes mainly for grain</b>							
<b>Peas, field -</b>							
Blue	tonnes	430.00	285.00	250.00	280.00	300.00	252.09
Grey and other	tonnes	440.00	285.00	330.00	330.00	300.00	218.48
<b>Crops for hay (b)</b>	tonnes	130.00	150.02	95.67	99.48	89.21	78.82
<b>Pasture for hay</b>	tonnes	131.92	151.40	105.97	108.93	123.69	106.56
<b>Orchard fruit -</b>							
Apples	tonnes	665.59	574.51	547.97	515.40	732.51	730.18
Apricots	tonnes	1 030.48	1 009.99	1 253.93	1 657.28	1 686.98	1 770.00
Pears	tonnes	652.25	686.92	684.89	765.16	869.85	732.95
<b>Berry fruit -</b>							
Currants	tonnes	737.33	897.73	901.01	1 150.00	1 150.00	1 150.00
Raspberries	tonnes	5 240.80	4 467.32	2 536.50	2 623.49	3 631.09	2 805.39
Strawberries	tonnes	4 000.00	4 640.00	5 580.00	4 591.61	5 703.63	5 400.83
Grapes	tonnes	1 613.00	1 621.00	1 395.61	1 396.00	1 435.00	1 433.23
<b>Vegetables for human consumption -</b>							
Beans, French and runner	tonnes	271.11	311.36	320.52	359.45	350.91	354.23
Carrots	tonnes	185.49	338.55	312.15	202.50	235.79	209.05
Onions	tonnes	373.95	327.69	384.53	269.91	282.70	299.43
Peas, green (c)	tonnes	251.40	330.97	328.41	370.96	321.06	309.49
Potatoes	tonnes	167.28	197.72	202.30	215.70	207.20	199.12

(a) See paragraph 4.4 of the Explanatory Notes.

(b) Excludes pasture harvested for hay - see 'Pasture for hay' below.

(c) Ex-shell weight.

TABLE 3. CROPS (a) : GROSS VALUE AND COVERAGE RATIO (b), TASMANIA

Crops	1988-89						
	1987-88	Value	Coverage Ratio (b)	1989-90	1990-91	1991-92	1992-93
	\$m	\$m	%	\$m	\$m	\$m	\$m
Cereals for grain -							
Barley	3.7	4.2	94.8	4.0	4.9	5.1	5.6
Oats	1.8	3.0	96.1	2.1	2.8	2.5	2.5
Wheat	0.7	0.4	94.7	0.5	0.4	0.6	0.9
Other cereals for grain	0.5	0.7	n.a.	0.7	0.6	0.7	0.6
Total	6.7	8.4	..	7.3	8.6	8.9	9.5
Legumes mainly for grain -							
Peas, field	0.5	0.2	97.5	0.2	0.3	0.3	0.3
Other legumes	0.3	0.5	n.a.	0.2	0.3	0.3	0.3
Total	0.7	0.7	..	0.5	0.7	0.6	0.6
Crops for hay (c)	1.5	1.8	n.a.	0.5	0.6	0.9	0.8
Pasture harvested -							
Pasture for hay	25.9	41.7	n.a.	25.6	26.9	27.3	32.0
Pasture for seed	1.1	0.8	100.0	0.8	0.8	0.8	1.3
Total	27.0	42.5	..	26.4	27.7	28.1	33.3
Fruit -							
Orchard fruit -							
Apples	35.8	30.2	99.2	31.4	23.3	36.9	41.0
Apricots	0.3	0.1	67.1	0.2	0.2	0.2	0.2
Cherries	0.2	0.2	72.9	0.3	0.6	0.4	0.5
Pears	0.7	0.7	98.0	0.6	0.7	0.7	0.6
Other orchard fruit	0.3	0.1	n.a.	0.1	0.2	0.1	0.3
Berry and small fruit -							
Currants	0.4	0.4	81.3	0.4	0.5	0.5	0.5
Raspberries	1.5	1.2	66.1	0.4	0.3	0.5	0.4
Strawberries	0.5	0.6	75.6	0.4	0.3	0.4	0.4
Other berry and small fruit			n.a.		0.1	0.1	0.2
Grapes	0.5	0.8	61.4	1.0	1.1	0.9	1.6
Total	40.2	34.4	..	34.8	27.2	40.8	45.8
Vegetables for human consumption -							
Beans, broad	0.3	0.8	100.0	0.6	0.7	0.4	0.3
Beans, French and runner	2.6	3.5	98.1	3.9	3.2	3.3	3.2
Broccoli	0.7	1.8	97.3	1.5	1.1	1.1	1.3
Brussels sprouts	0.9	0.9	100.0	0.9	1.0	0.8	0.8
Cabbages	0.4	1.1	98.3	1.1	0.8	1.0	1.6
Carrots	3.1	6.4	99.6	6.7	3.1	4.2	4.0
Cauliflowers	1.5	2.8	98.2	2.6	2.5	2.9	2.8
Celery	0.3	0.3	100.0	0.3	0.4	0.3	0.5
Lettuce	0.8	1.0	97.9	0.8	1.1	0.9	1.3
Onions, brown & white	19.6	24.8	97.3	25.3	19.8	22.1	17.8
Parsnips	0.3	0.4	100.0	0.4	0.4	0.5	0.5
Peas, green	7.2	9.9	98.6	10.0	9.9	8.9	8.6
Potatoes	42.9	52.0	97.7	60.2	50.8	51.8	53.7
Pumpkin	0.2	0.5	98.9	0.6	0.6	0.6	0.6
Swedes	1.3	0.8	99.5	0.7	0.4	0.9	0.8
Sweet corn	0.6	1.0	99.8	1.1	0.9	0.7	0.8
Tomatoes	1.2	1.5	88.2	1.3	1.2	1.4	1.4
Other vegetables	1.4	2.3	n.a.	2.0	2.7	2.4	7.0
Total	85.2	111.9	..	120.0	100.6	104.2	106.7
Other crops -							
Nurseries	10.7	14.7	95.6	14.8	11.2	11.5	15.9
Other	17.4	19.0	n.a.	17.8	32.6	32.4	32.8
Total	28.1	33.7	..	32.5	43.8	43.9	48.7
<b>TOTAL</b>	<b>189.4</b>	<b>233.4</b>	<b>..</b>	<b>221.9</b>	<b>209.1</b>	<b>227.4</b>	<b>245.4</b>

(a) Excludes crops and pasture harvested for green feed or silage.

(b) The percentage ratio of farms in 1988-89 with Estimated Value of Agricultural Operations (EVAO) of \$20 000 and over to the total for farms with EVAO of \$5 000 and over. See the reference to Scope and Coverage in the Explanatory Notes.

(c) Excludes pasture harvested for hay - see 'Pasture harvested' below.

TABLE 4. CROPS (a) : LOCAL VALUE AND COVERAGE RATIO (b), TASMANIA

Crops	1988-89						
	1987-88	Value	Coverage Ratio (b)	1989-90	1990-91	1991-92	1992-93
	\$m	\$m	%	\$m	\$m	\$m	\$m
Cereals for grain -							
Barley	3.0	3.7	94.8	3.6	4.5	4.5	4.9
Oats	1.4	2.8	96.1	2.0	2.5	2.1	2.0
Wheat	0.7	0.4	94.7	0.5	0.3	0.5	0.8
Other cereals for grain	0.5	0.7	n.a.	0.6	0.5	0.6	0.5
Total	5.7	7.6	..	6.7	7.8	7.7	8.3
Legumes mainly for grain-							
Peas, field	0.4	0.2	97.5	0.2	0.3	0.3	0.3
Other legumes	0.2	0.4	n.a.	0.2	0.3	0.3	0.2
Total	0.6	0.6	..	0.4	0.6	0.6	0.5
Crops for hay (c)	1.4	1.7	n.a.	0.4	0.5	0.8	0.6
Pasture harvested -							
Pasture for hay	25.3	41.1	n.a.	25.0	26.5	26.9	31.4
Pasture for seed	1.0	0.8	100.0	0.8	0.8	0.8	1.3
Total	26.4	41.9	..	25.8	27.2	27.7	32.7
Fruit -							
Orchard fruit -							
Apples	23.5	19.4	99.2	20.1	16.7	22.8	24.6
Apricots	0.3	0.1	67.1	0.1	0.2	0.2	0.2
Cherries	0.2	0.2	72.9	0.3	0.5	0.4	0.5
Pears	0.4	0.4	98.0	0.4	0.5	0.5	0.3
Other orchard fruit	0.3	0.1	n.a.	0.1	0.1	0.1	0.3
Berry and small fruit -							
Currants	0.4	0.4	81.3	0.4	0.5	0.5	0.5
Raspberries	1.5	1.0	66.1	0.4	0.3	0.5	0.5
Strawberries	0.4	0.5	75.6	0.3	0.2	0.3	0.4
Other berry and small fruit	-	-	n.a.	-	0.1	0.1	0.2
Grapes	0.5	0.8	61.4	1.0	1.1	0.9	1.6
Total	27.6	23.0	..	23.1	20.3	26.4	29.0
Vegetables for human consumption -							
Beans, broad	0.3	0.3	100.0	0.6	0.7	0.4	0.3
Beans, French and runner	2.6	3.5	98.1	3.9	3.2	3.3	3.2
Broccoli	0.7	1.7	97.3	1.5	1.1	1.1	1.2
Brussels sprouts	0.9	0.9	100.0	0.9	1.0	0.8	0.8
Cabbages	0.4	1.0	98.3	1.0	0.6	0.8	1.2
Carrots	3.0	6.0	99.6	6.2	2.9	4.0	3.8
Cauliflowers	1.5	2.7	98.2	2.5	2.3	2.7	2.5
Celery	0.3	0.3	100.0	0.3	0.4	0.3	0.5
Lettuce	0.8	1.0	97.9	0.7	1.0	0.9	1.2
Onions	17.6	22.3	97.3	22.4	17.2	19.2	15.4
Parsnips	0.2	0.4	100.0	0.4	0.4	0.5	0.4
Peas, green	7.2	9.9	98.6	10.0	9.9	8.9	8.6
Potatoes	41.5	50.8	97.7	57.5	48.6	49.7	52.4
Pumpkin	0.2	0.4	98.9	0.5	0.4	0.4	0.4
Swedes	1.2	0.7	99.5	0.7	0.3	0.8	0.7
Sweet corn	0.6	1.0	99.8	1.0	0.9	0.7	0.8
Tomatoes	1.2	1.5	88.2	1.3	1.2	1.4	1.4
Other vegetables	1.3	1.9	n.a.	1.7	2.7	2.3	6.9
Total	81.3	107.0	..	113.2	94.8	98.2	101.8
Other crops -							
Nurseries	9.6	13.2	95.6	13.3	10.1	10.4	14.3
Other	16.7	18.3	n.a.	17.3	31.3	32.3	32.7
Total	26.2	31.5	..	30.6	41.5	42.7	47.0
<b>TOTAL</b>	<b>169.2</b>	<b>213.3</b>	<b>..</b>	<b>200.1</b>	<b>192.8</b>	<b>204.0</b>	<b>220.0</b>

(a) Excludes crops and pasture harvested for green feed or silage.

(b) The percentage ratio of farms in 1988-89 with Estimated Value of Agricultural Operations (EVAO) of \$20 000 and over to the total for farms with EVAO of \$5 000 and over. See the reference to Scope and Coverage in the Explanatory Notes.

(c) Excludes pasture harvested for hay - see 'Pasture harvested' below.

TABLE 5. AVERAGE LIVESTOCK PRICES (a), TASMANIA

(\$)

Category	1987-88	1988-89	1989-90	1990-91	1991-92	1992-93
Cattle (other than calves)	415.11	455.92	496.63	464.58	438.60	479.85
Sheep	7.05	11.67	5.21	2.01	3.15	6.08
Lambs	25.07	22.76	22.06	18.30	19.85	19.61

(a) Average prices, on the hoof, of selected classes of livestock sold for slaughter.

TABLE 6. LIVESTOCK SLAUGHTERINGS AND OTHER DISPOSALS (a) : GROSS VALUE, TASMANIA

(\$ million)

Particulars	1987-88	1988-89	1989-90	1990-91	1991-92	1992-93
Cattle and calves	78.5	78.8	99.9	90.1	88.0	91.9
Sheep and lambs	18.9	20.5	13.2	8.1	8.9	13.4
Other (b)	22.5	22.8	27.8	27.1	28.8	30.6
<b>Total</b>	<b>120.0</b>	<b>122.1</b>	<b>140.8</b>	<b>125.2</b>	<b>125.7</b>	<b>136.0</b>

(a) Includes an adjustment for net export of live animals

(b) Includes pigs, goats and poultry slaughterings and other disposals.

TABLE 7. LIVESTOCK PRODUCTS : GROSS VALUE, TASMANIA

(\$ million)

Particulars	1987-88	1988-89	1989-90	1990-91	1991-92	1992-93
Wool (a)	162.4	154.7	161.9	116.7	78.7	62.7
Whole milk used for -						
Manufacturing dairy product	50.6	65.9	68.9	67.5	70.2	92.6
Human consumption	16.5	18.3	19.6	20.9	21.6	23.4
<b>Total whole milk</b>	<b>67.0</b>	<b>84.2</b>	<b>88.5</b>	<b>88.4</b>	<b>91.8</b>	<b>116.0</b>
Goat products (c)	0.8	n.a.	n.a.	n.a.	n.a.	n.a.
Eggs	7.5	7.7	9.3	8.1	7.9	7.4
Honey and beeswax	1.3	1.0	1.3	1.8	2.1	1.2
<b>Total</b>	<b>239.1</b>	<b>247.6</b>	<b>261.0</b>	<b>214.9</b>	<b>180.4</b>	<b>187.3</b>

(a) Shorn (including crutchings), fellmongered and exported on skins.

(b) Includes butter, cheese and condensery products.

(c) Includes cashmere, mohair and liquid goat milk.

TABLE 8. GROSS VALUE OF AGRICULTURAL COMMODITIES PRODUCED BY STATISTICAL DIVISION, TASMANIA, 1991-92

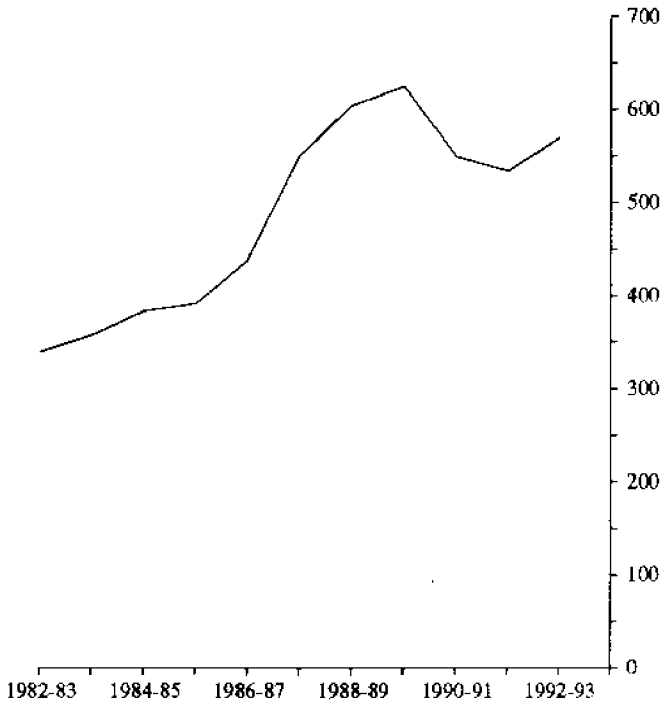
(\$ million)

Particulars	Statistical division				Tasmania
	Greater Hobart	Southern	Northern	Mersey-Lyell	
Crops -					
Fruit	1.2	36.1	4.6	3.9	45.8
Vegetables	1.5	2.6	26.1	76.5	106.7
Other crops	3.1	19.5	37.9	32.4	92.9
<b>Total</b>	<b>5.8</b>	<b>58.2</b>	<b>68.7</b>	<b>112.8</b>	<b>245.4</b>
Livestock slaughtering and other disposals	2.3	30.5	52.1	51.1	136.0
Livestock products	6.6	29.1	74.9	76.8	187.3
<b>Total agriculture</b>	<b>14.7</b>	<b>117.8</b>	<b>195.6</b>	<b>240.6</b>	<b>568.7</b>
<i>Percentage of Tasmanian total</i>	2.6	20.7	34.4	42.3	100.0

GRAPHS - GROSS VALUE OF AGRICULTURAL COMMODITIES PRODUCED

**TOTAL AGRICULTURAL PRODUCTION**

\$m



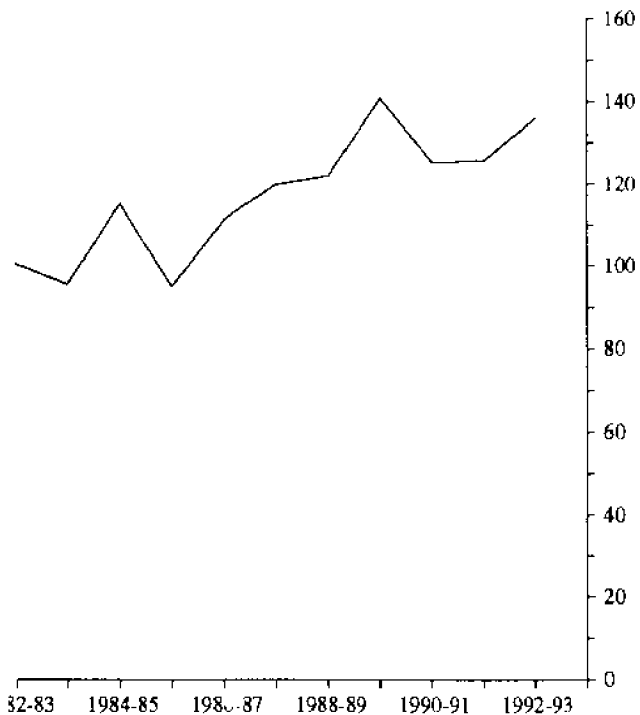
**CROPS**

\$m



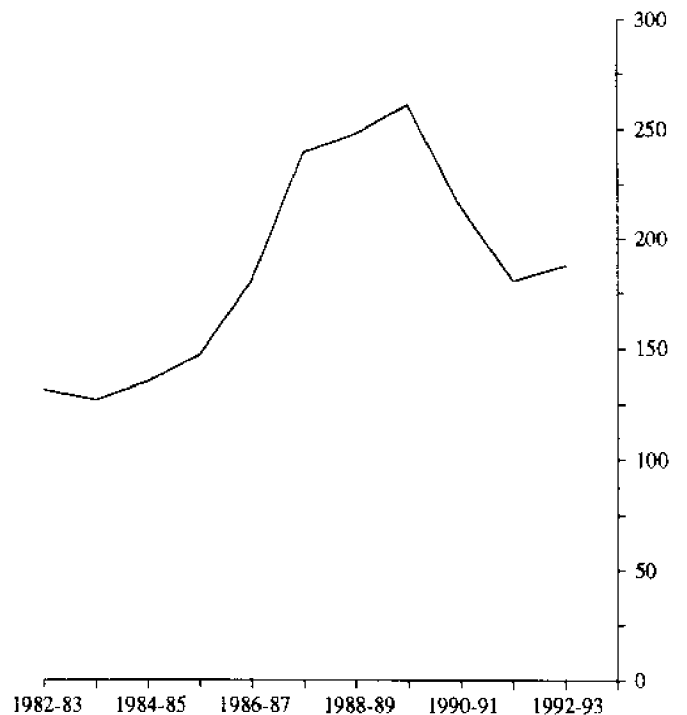
**LIVESTOCK SLAUGHTER & OTHER DISPOSALS**

\$m



**LIVESTOCK PRODUCTS**

\$m



## EXPLANATORY NOTES

### 1. Introduction

1.1 This publication contains statistics on the Value of Agricultural Commodities Produced (VACP) for Tasmania for 1992-93 and includes some data for earlier periods.

1.2 The statistics are derived from multiplying quantity data by price (or unit value) data. The quantity data are collected in annual Agricultural Censuses and other ABS collections, with some information derived from external sources. All price information is obtained from non-ABS sources.

### 2. Scope and Coverage

2.1 The ABS excludes from the Census those establishments which make only a small contribution to overall agricultural production.

2.2 For the period until 1989-90 crop estimates were based on farms with an Estimated Value of Agricultural Operations (EVAO) of \$5,000 or more.

2.3 From 1989-90 crop estimates are based on production from farms having a minimum EVAO of \$20,000.

2.4 The ABS has calculated the effect of the change in scope through the application of coverage ratios. A coverage ratio is the percentage contribution of farms with EVAO of \$20,000 and over to the total for farms with EVAO of \$5,000 and over (based on 1988-89) data.

2.5 Data for 1991-92 are generally comparable to previous years for most crops, except for those which have the lowest coverage ratios, i.e. apricots, cherries, grapes, peaches and raspberries. Their 1988-89 ratios are:

Apricots	67.1%
Cherries	72.9%
Grapes	61.4%
Peaches	58.1%
Raspberries	66.1%

2.6 For 1991-92 the minimum EVAO was raised to \$22,500. The difference in scope is not sufficient to affect the main comparisons in this publication.

2.7 Estimates of VACP for livestock slaughterings and livestock products are on the same basis as previous years.

### 3. Information Sources

3.1 **Quantity data:** Quantity data on crops are, in the main, derived from the Agricultural Census held at 31 March each year. Where the harvesting of crops was not completed by 31 March (e.g. apples and potatoes), supplementary collections are conducted after the completion of the harvest.

Crops which were sown just prior to 31 March are excluded. Information covering livestock slaughterings and livestock products is obtained from separate collections.

3.2 **Price data:** Where a statutory authority handles the marketing of the whole or portion of a product (e.g. the Australian Wheat Board), data are usually obtained from this source. Information is also obtained from marketing reports, wholesalers, brokers, processors, auctioneers and from overseas and interstate trade statistics.

3.3 A single State average value has been distributed over statistical divisions. Where a commodity is sold in several markets (e.g. potatoes exported, processed, or sold for table use) the proportion going to each market from individual divisions is assumed to be constant.

3.4 **Period covered:** The period covered in this publication with regard to crops refers, in general, to the season ended 31 March, and for the remaining commodities refers to the year ended 30 June. For all commodities, values are in respect of production during the year (or season) irrespective of whether or when payments are made.

### 4. Definitions of Terms Used

4.1 **Gross value:** This is the value placed on recorded production at the wholesale prices realised in the market place. Where commodities are consumed locally, or where they become raw material for a secondary industry, these points are presumed to be the market places. Products sold interstate or overseas are valued f.o.b. Tasmanian port prices. If exports are sold 'on consignment', prices received are converted to an f.o.b. basis. Estimates of the value of crops grown and consumed entirely on the farm are made from the best available information, and in general are valued on a 'local value' basis.

4.2 **Local value:** This is the value placed on recorded production at the place of production and is ascertained by deducting marketing costs from the gross value of commodities produced. Gross and local values of agricultural commodities produced involve some duplication, as they include certain agricultural commodities which are used as raw materials in producing other agricultural commodities (e.g. hay consumed by livestock).

4.3 **Marketing costs:** These include freight, cost of containers, commission and other charges incurred in marketing.

4.4 **Average unit gross values:** Gross unit values are derived by dividing aggregate gross values by total recorded production. They therefore represent weighted average 'prices' in all markets for the products.

**Note:** Values include any relevant subsidy and bounty payments.

## EXPLANATORY NOTES

## 5. Related Publications

n.p. not available for separate publication but included in totals where applicable  
- nil or rounded to zero

5.1. Other publications which may be of interest to users are:

6.2 Where figures have been rounded, discrepancies may occur between sums of the component items and totals.

Title	Catalogue No.	
	Tasmania	Australia
Principal Agricultural Commodities, Preliminary	7111.6	7111.0
Value of Principal Agricultural Commodities Produced, Preliminary	-	7501.0
Value of Selected Agricultural Commodities Produced, Preliminary	-	7502.0
Value of Agricultural Commodities Produced, (Final)	7503.6	7503.0

5.2. Final data from the Agricultural Census are published in the following series of annual publications:

Title	Catalogue No.	
	Tasmania	Australia
Livestock and Livestock Products	-	7221.0
Summary of Crops	-	7330.0
Viticulture	-	7310.0
Agricultural Industries, Financial Statistics	-	7507.0
Agricultural Industries, Structure of Operating Units	-	7102.0
Agricultural Statistics	7114.6	-

5.3. All publications produced by the ABS are listed in the annual **Catalogue of Publications** (1101.0) which is available from any ABS Office.

## 6. Symbols and Other Usages

6.1 The following symbols, where shown in tables, mean:

.. not applicable  
r figure or series revised since previous issue  
n.a. not available







## *For more information . . .*

The ABS publishes a wide range of statistics and other information on Australia's economic and social conditions. Details of what is available in various publications and other products can be found in the ABS *Catalogue of Publications and Products* available at all ABS Offices (see below for contact details).

### **Information Consultancy Service**

Information tailored to special needs of clients can be obtained from the Information Consultancy Service at ABS Offices (see Information Inquiries below for contact details).

### **National Dial-a-Statistic Line**

0055 26 400

This number gives you 24-hour access, 365 days a year, for a range of statistics.

### **Electronic Data Services**

A wide range of ABS data is available on electronic media. Selections of most-frequently requested statistics are available, updated daily, on DISCOVERY (Key \*656#). The ABS PC TELESTATS service delivers major economic indicator main features ready to download into personal computers on the day of release. The PC AUSSTATS service enables on-line access to a data base of thousands of up-to-date time series. Selected datasets are available also on diskette or CD-ROM. For more details on electronic data services available, contact Information Services in any of the ABS Offices (see Information Inquiries below for contact details).

### **Bookshops and Subscriptions**

There are over 500 titles of various publications available from ABS bookshops in all ABS Offices (see below Bookshop Sales for contact details). The ABS also provides a subscription service through which nominated publications are provided by mail on a regular basis at no additional cost (telephone Publications Subscription Service toll free on 008 02 0608 Australia wide).

## *Sales and Inquiries*

### **Regional Offices**

SYDNEY (02)  
MELBOURNE (03)  
BRISBANE (07)  
PERTH (09)  
ADELAIDE (08)  
HOBART (002)  
CANBERRA (06)  
DARWIN (089)

### **Information Inquiries**

268 4611  
615 7000  
222 6351  
323 5140  
237 7100  
205 800  
207 0315  
432 111

### **Bookshop Sales**

268 4620  
615 7829  
222 6350  
323 5307  
237 7582  
205 800  
207 0315  
432 111

### **National Office**

ACT (06)

252 6007

008 020 608

Information Services, ABS, PO Box 10, Belconnen ACT 2616

