



1994-95

Agriculture South Australia

ABS Catalogue No. 7113.4



EMBARGOED UNTIL 11.00 A.M. 15 July 1996

**AGRICULTURE
SOUTH AUSTRALIA
1994-95**

**P. M. GARDNER
Deputy Commonwealth Statistician
and Government Statist**

AUSTRALIAN BUREAU OF STATISTICS

CATALOGUE NO. 7113.4

© Commonwealth of Australia 1996

Produced by the Australian Government Publishing Service

CONTENTS

	Page
	1
	11
	12
	13
	13
	14
	16
	19
	19
	20
	21
	22
	23
	24
<hr/>	
INQUIRIES:	<ul style="list-style-type: none"> ■ <i>for further information about statistics in this publication and the availability of related unpublished statistics, contact Mr Frank McCallum on Hobart (002) 20 5939 or any ABS State office.</i> ■ <i>for information about other ABS statistics and services, please refer to the back of this publication.</i>

	14 Gross Value of Principal Crops and Pastures, Years ended 31 March 1993 to 1995 preliminary	24
	15 Number of Establishments by Area of Principal Grains Sown and Production, Year ended 31 March 1995	25
	16 Number of Establishments Growing Cereals for Grain by Statistical Division, Year ended 31 March 1995	26
	17 Cereal Crop Forecast for all Purposes by Statistical Division, Season 1995-96	26
	Horticulture	
TABLES	18 Number of Trees, Production and Yield for Citrus and Pome Fruit, by Statistical Division, Year ended 31 March 1995	27
	19 Number of Trees, Production and Yield for Stone Fruit by Statistical Division, Year ended 31 March 1995	28
	20 Number of Trees, Production and Yield for Other Fruit and Nuts, by Statistical Division, Year ended 31 March 1995	29
	21 Gross Value of Citrus, Pome and Other Fruit and Nuts, Years ended 31 March 1993 to 1995 preliminary	30
	22 Area of Vines, Production of Grapes by Statistical Division, Year ended 31 March 1995	30
	23 Area, Production and Yield of Vegetables for Human Consumption, Years ended 31 March 1993 to 1995	31
	24 Area, Production and Yield of Vegetables for Human Consumption by Statistical Division, Year ended 31 March 1995	33
	25 Gross Value of Vegetables for Human Consumption, Years ended 31 March 1993 to 1995 preliminary	35
	26 Area of Nurseries, Cut Flowers and Cultivated Turf by Statistical Division, Year ended 31 March 1995	35
	Livestock and livestock products	
TABLES	27 Meat Cattle Numbers by Statistical Division, at 31 March 1995	36
	28 Number of Establishments with Meat Cattle by Statistical Division, at 31 March 1995	36
	29 Number of Establishments by Size of Meat Cattle Herd, at 31 March 1994 and 1995	37
	30 Milk Cattle Numbers by Statistical Division, at 31 March 1995	38
	31 Number of Establishments with Milk Cattle by Type by Statistical Division, at 31 March 1995	38

TABLES		Page
	32 Number of Establishments by Size of Milk Cattle Herd, at 31 March 1994 and 1995	39
	33 Number of Sheep and Lambs by Statistical Division, at 31 March 1995	40
	34 Number of Establishments with Sheep and Lambs by Statistical Division, at 31 March 1995	40
	35 Number of Establishments by Size of Flock, at 31 March 1994 and 1995	41
	36 Lambing by Statistical Division, Year ended 31 March 1995	42
	37 Pig Numbers and Number of Establishments by Statistical Division, at 31 March 1995	42
	38 Number of Establishments by Size of Pig Herd, at 31 March 1994 and 1995	43
	39 Poultry Numbers by Statistical Division, at 31 March 1995	44
	40 Number of Establishments with, and Number of Deer and Horses by Statistical Division, at 31 March 1995	44
	41 Livestock Slaughterings and Livestock Products, Years ended 30 June 1993 to 1995	45
	42 Gross Value of Livestock Products and Other Disposals, Years ended 31 March 1993 to 1995 preliminary	45
	43 Beekeeping, Summary Statistics, Years Ended 30 June 1994 and 1995	46
	Farm finances	
TABLES	44 Selected Financial Statistics, Farm Businesses by Industry, Aggregates 1992-93 to 1993-94	47
	45 Selected Financial Statistics, Farm Businesses, Aggregates and Averages 1989-90 to 1994-95 preliminary	50
	Explanatory notes	51
	Map: Statistical Divisions of South Australia	55

	Page
GRAPHS	
Wheat, Years ended 31 March	2
Barley, Years ended 31 March	3
Field Peas for Grain, Years ended 31 March	3
Lupins for Grain, Years ended 31 March	4
Canola, Years ended 31 March	4
Orange Production, Years ended 31 March	5
Apple Production, Years ended 31 March	5
Grape Production, Years ended 31 March	6
Potato Area, Years ended 31 March	6
Potato Production, Years ended 31 March	7
Meat Cattle, at 31 March	7
Milk Cattle, at 31 March	8
Sheep and Lambs, at 31 March	8
Pigs, at 31 March	9

SUMMARY OF FINDINGS

STRUCTURE OF AGRICULTURAL INDUSTRY

The number of establishments with agricultural activity declined from 16,345 at 31 March 1994 to 15,952 at 31 March 1995. This was a decrease of 2.4%. This total included 165 establishments with some agricultural activity, but whose main activity was in some other industry, and 146 establishments which were not classified to any industry.

The main industries of the agricultural establishments were:

	Number	% of establishments with agricultural activity
Grain-sheep/beef cattle farming	3,588	22.5
Grain growing	2,652	16.6
Grape growing	1,730	10.8
Sheep farming	1,617	10.1

There was a substantial fall in the number of establishments classified to grain growing. The number fell from 3,195 to 2,652 (a fall of 17.0% of the total). Those establishments classified to grape growing increased, from 1,468 to 1,730 (up 17.8%). Establishments involved in grain-sheep/beef cattle farming increased from 3,253 to 3,588 (up 10.3%).

At 31 March 1995, only 3.2% of establishments with agricultural activity had an estimated value of agricultural operations (EVAO) of \$500,000 or more. In contrast, some 48.3% of establishments had an EVAO between \$50,000 and \$199,999. The vegetable growing industry accounted for 23.2% of establishments with an EVAO of \$500,000 or more, but only accounted for 3.6% of all establishments with agricultural activity.

In terms of area, 96 establishments had an area of 100,000 hectares or more at 31 March 1995; most were in the sheep industry (44) or the beef cattle industry (37).

LAND MANAGEMENT

At 31 March 1995 establishments with agricultural activity occupied 56.1 million hectares, or 56.8% of South Australia's total area. This was only slightly down on the previous year, when 58.0% of South Australia's total area was occupied by establishments with agricultural activity. The area occupied by cereal crops was 2.5 million hectares (4.4% of the total area of establishments with agricultural activity).

Crop stubble

The main method of handling crop stubble in 1994-95, used on 640,796 hectares, was to plough it into the soil. The next most popular method was to mulch it and this method was used on 355,249 hectares. There were 352,117 hectares of stubble left intact (no cultivation and crops were sown by direct drilling), while 184,893 hectares of stubble was burnt.

Tree plantings

A total of 1,424,500 trees were planted from seedlings during the 1994-95 season. Just under 40.0% of these trees were planted in the South East Statistical Division (SD).

CROPS AND PASTURES

In terms of area, the two main crops grown were wheat (1,394,700 hectares) and barley (881,900 hectares). In the year ended 31 March 1995 there were decreases in production of all cereals for grain. These decreases were primarily caused by the drought, although it was less severe in South Australia than in the eastern States. Barley production fell by 48.3% to 1,158,700 tonnes; oats fell by 35.6% to 87,000 tonnes; wheat fell by 29.9% to 1,487,400 tonnes and triticale fell by 10.4% to 43,900 tonnes.

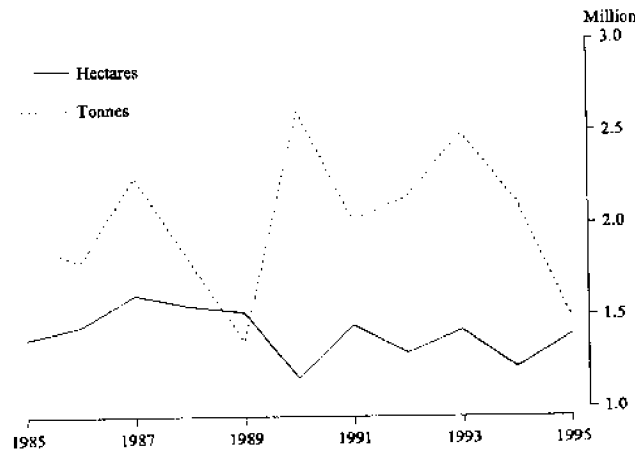
However, the number of establishments growing triticale increased 24.6% to 654 at 31 March 1995. There were slight increases in the number of establishments growing wheat (4.4%) and oats (3.7%).

Wheat

Wheat for grain was sown in all SDs. The major contributors in terms of production were Yorke and Lower North, Eyre, and Northern which together accounted for 77.5% of the State's production (see table 10).

In the 1994-95 season 18.1% of all establishments sowing wheat for grain had an area sown of 2,000 hectares or more. These establishments accounted for 43.7% of total area sown and 30.7% of total production.

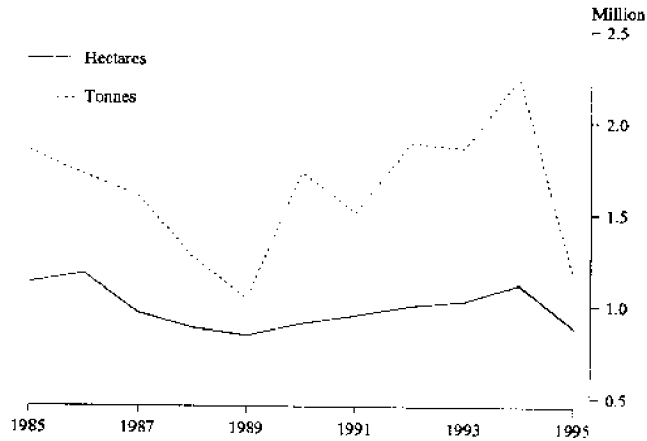
WHEAT, YEARS ENDED 31 MARCH



Barley

The area sown to barley for grain decreased by 20.9% in the 1994-95 season to 881,900 hectares. Barley was grown in all SDs with most in the Yorke and Lower North SD which accounted for 45.9% of the State's production (see table 10). The Murray Lands SD had 17.5% of the State's barley production, 24.6% of the area, and had a yield of 0.9 tonnes per hectare.

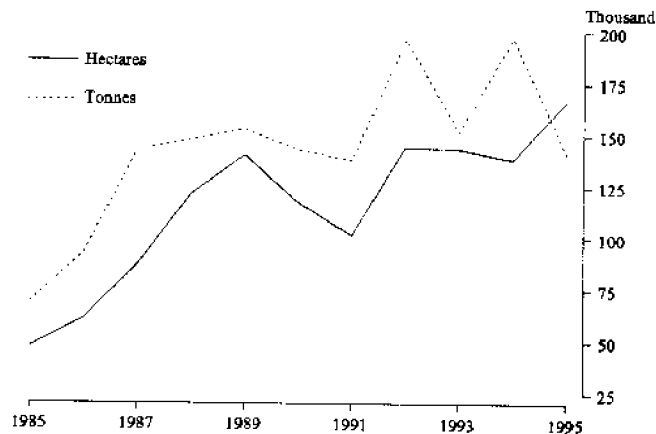
BARLEY, YEARS ENDED 31 MARCH



Field peas

The area sown to field peas for grain increased by 20.6% in the 1994-95 season to 167,032 hectares, but production decreased by 28.3% to 141,438 tonnes. Consequently, the yield dropped from 1.4 tonnes to 0.8 tonnes per hectare. Field peas for grain were grown in all SDs, with most grown in the Yorke and Lower North SD which accounted for 58.7% of the State's production and 58.8% of area sown (see table 11).

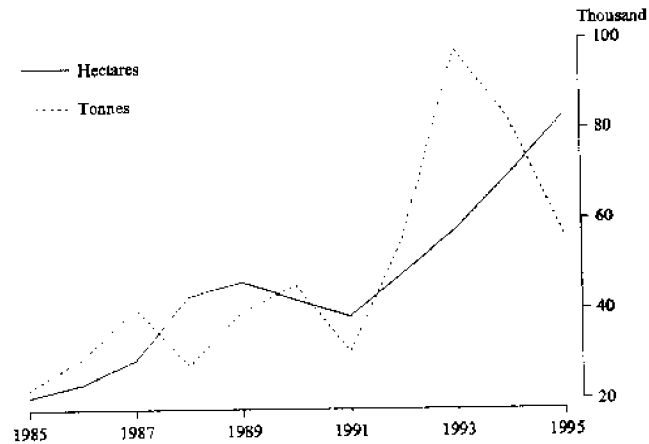
FIELD PEAS FOR GRAIN, YEARS ENDED 31 MARCH



Lupins

The area sown to lupins for grain increased by 18.8% in the 1994-95 season to 82,724 hectares, but production decreased by 31.4% to 56,259 tonnes. Consequently the yield dropped from 1.2 tonnes to 0.7 tonnes per hectare in the 1994-95 season. Lupins for grain were grown in all areas with most grown in the South East SD which accounted for 33.9% of South Australia's production and 24.6% of area sown (see table 11).

LUPINS FOR GRAIN, YEARS ENDED 31 MARCH

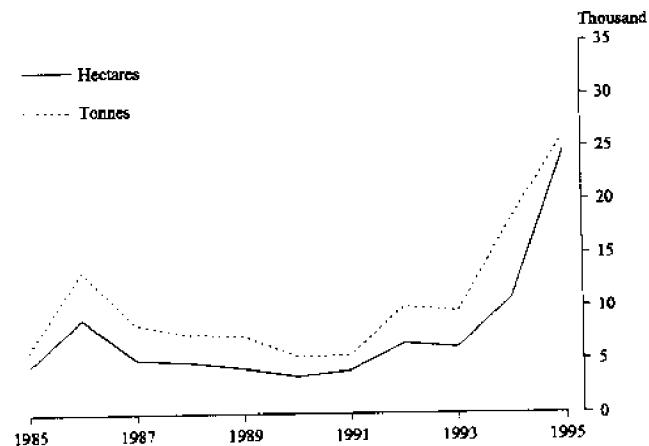


Canola

The area planted with canola increased by 127.9% to 24,518 hectares. The production of canola also increased, by 43.3% to 25,941 tonnes. The area planted to safflower fell by 21.3% to 7,870 hectares. The production of safflower fell by 60.0% to 3,843 tonnes.

Canola was grown in all areas with most grown in the South East SD which accounted for 58.0% of the State's production and 43.5% of area sown (see table 13).

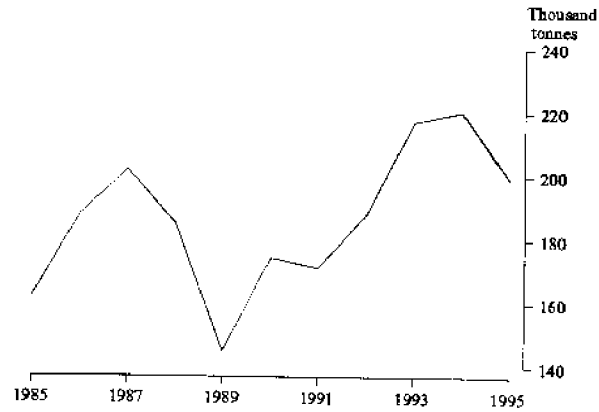
CANOLA, YEARS ENDED 31 MARCH



HORTICULTURE

During the 1994-95 season total orange production fell to 199,181 tonnes, a decrease of 9.5%; total tree numbers decreased by 3.2% to 2.2 million. The Murray Lands SD accounted for virtually all orange production in South Australia (see table 18).

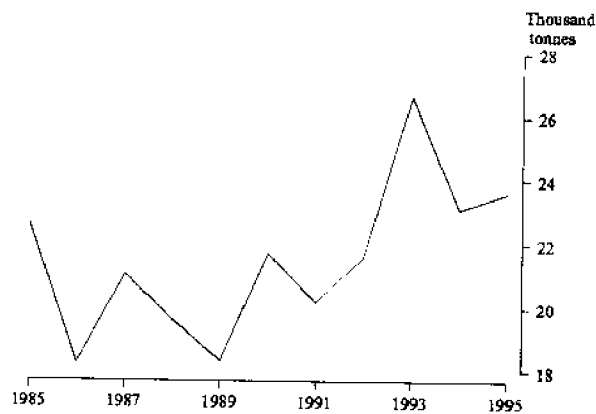
ORANGE PRODUCTION, YEARS ENDED 31 MARCH



Apples

The number of apple trees at 31 March 1995 stood at 808,300, an increase of 6.8%. Production increased by 2.2% to 23,596 tonnes. The major apple growing area in South Australia were the Adelaide and Outer Adelaide SDs which accounted for 78.2% of the State's trees and 86.7% of the State's production (see table 18).

APPLE PRODUCTION, YEARS ENDED 31 MARCH



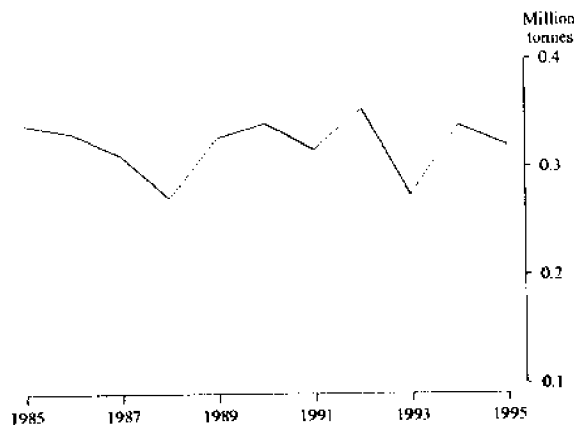
Apricots

The number of apricot trees at 31 March 1995 stood at 492,200, a decrease of 5.3% from 31 March 1994. However, production during the year increased by 28.3% to 17,349 tonnes (see table 19).

Grapes

The total area of vines at harvest in 1994-95 increased by 18.7% over the previous year to 32,603 hectares; however, total grape production fell by 4.0% to 329,797 tonnes. Production of wine grapes decreased by 5.4% to 320,170 tonnes, while grape production for drying decreased by 32.0% to 6,715 tonnes. The major wine grape growing area was the Murray Lands SD with 55.9% of the total South Australian wine grape production. This was followed by the Adelaide and Outer Adelaide SDs with 24.6%, and the South East SD with 15.2% (see table 22).

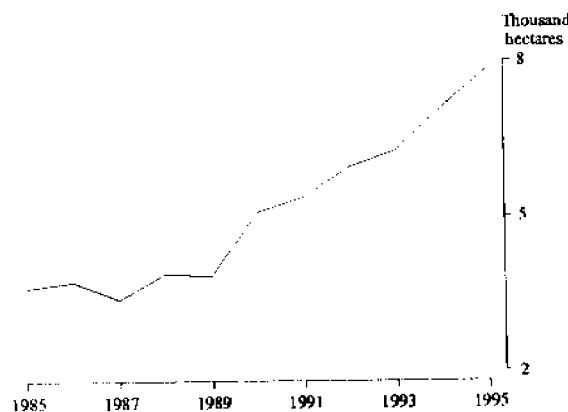
GRAPE PRODUCTION, YEARS ENDED 31 MARCH



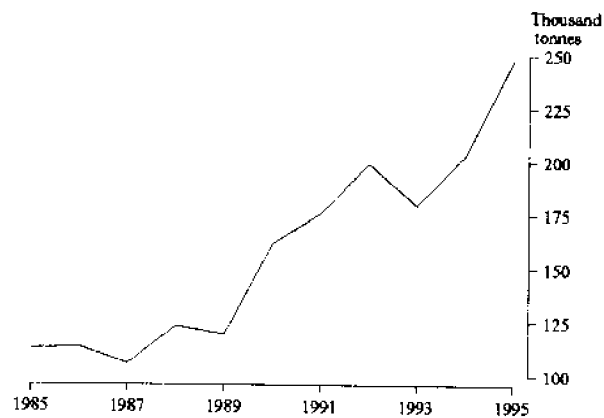
Potatoes

The total area planted to potatoes in the 1994-95 season increased by 10.5% over 1993-94 to 7,831 hectares. Production also increased by 22.1% to 247,414 tonnes.

POTATO AREA, YEARS ENDED 31 MARCH



POTATO PRODUCTION, YEARS ENDED 31 MARCH



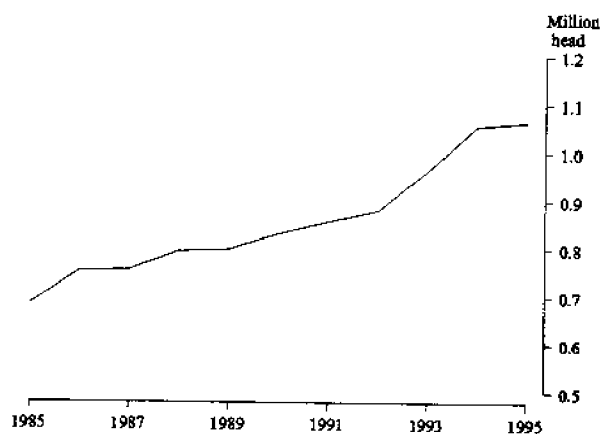
LIVESTOCK AND LIVESTOCK PRODUCTS

Meat cattle

The meat cattle herd was 1.1 million at 31 March 1995, little changed from the previous year. The number of establishments with meat cattle was also virtually unchanged at 5,775. The major area, in terms of herd size, was the South East SD with 49.6% of South Australia's meat cattle, followed by the Northern SD with 20.3% (see table 27).

At 31 March 1995, 7.4% of all establishments with meat cattle had a herd size of 500 or more. These establishments accounted for 51.7% of the number of meat cattle.

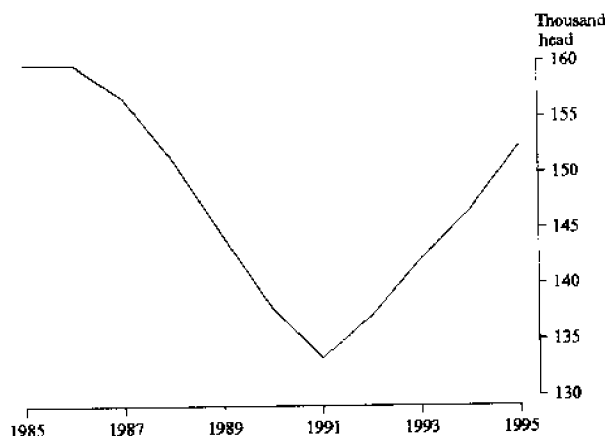
MEAT CATTLE, AT 31 MARCH



Milk cattle

The milk cattle herd increased to 152,400 at 31 March 1995, a rise of 4.0% from the previous year. The number of establishments with milk cattle fell by 10.4% to 989. The major regions in terms of herd size were the Adelaide and Outer Adelaide SDs and the Murray Lands SD which together accounted for 74.6% of the State's milk cattle (see table 30). At 31 March 1995, 26.0% of all establishments with milk cattle had a herd size of 200 or more. These establishments accounted for 53.7% of the number of milk cattle.

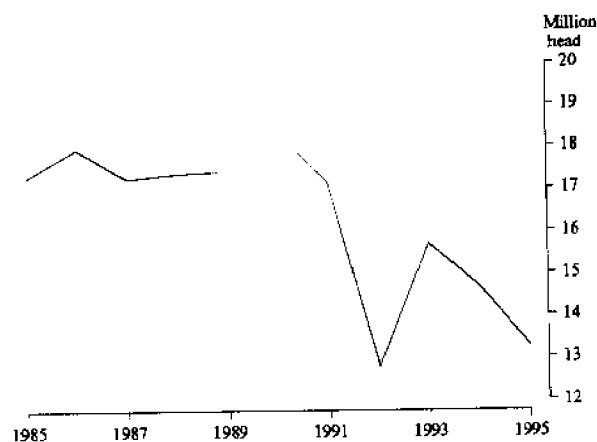
MILK CATTLE, AT 31 MARCH



Sheep and lambs

The number of establishments with sheep and lambs at 31 March 1995 stood at 8,980, a decrease of 6.9% from the previous year. Sheep and lamb numbers at 31 March 1995 were 13.2 million, a decrease of 9.7% from the previous year (see table 33). The number of lambs marked decreased by 13.2% to 4.8 million (see table 36). All SDs had sheep and lambs. The South East SD had the largest number of sheep and lambs with 26.4% of the State's flock, followed by the Northern SD with 20.5% (see table 33).

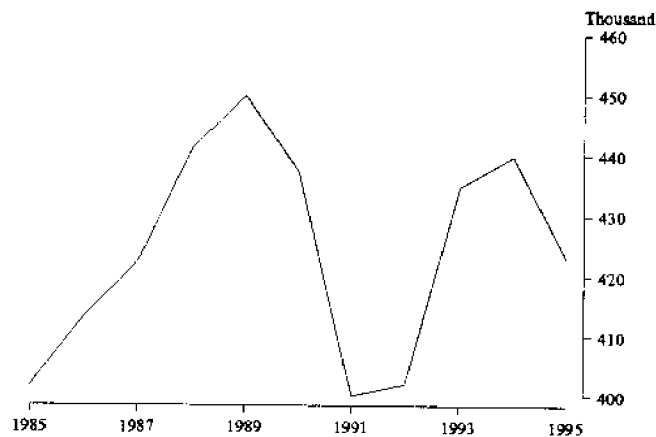
SHEEP AND LAMBS, AT 31 MARCH



Pigs

Pig numbers at 31 March 1995 were 422,900, a decrease of 3.8% from the previous year. The number of establishments with pigs stood at 1,032, a decrease of 8.6% from the previous year. The two major areas in terms of pig numbers were the Murray Lands SD with 32.8% of the State's herd, followed by the Adelaide and Outer Adelaide SDs with 30.2% (see table 37).

PIGS, AT 31 MARCH



VALUE OF AGRICULTURAL COMMODITIES PRODUCED

At the time of publication, only preliminary figures were available for the gross value of agricultural commodities produced in the year ending 31 March 1995. The figures show that wheat remained the leading crop in terms of value with \$349.1 million, with barley as the second most valuable crop at \$258.1 million. The effects of the drought were less severe in South Australia than in the eastern States. This is indicated by a small drop in the value of wheat (down 4.4%) to \$349.1 million in the year ended 31 March 1995, and a drop of 4.9% in barley.

In relation to fruit, preliminary figures show that the value of the grape crop increased to \$308.8 million. Grapes still remained the single most valuable fruit crop in South Australia, followed by oranges which had a value of \$80.2 million, then apples with a value of \$24.0 million.

The gross value of livestock slaughterings was little changed from the previous year to \$451.2 million. Cattle and calf slaughterings represented 41.2% of this value followed by sheep and lambs, poultry and pigs which represented 30.2%, 16.5% and 11.5% respectively. Preliminary figures show the most significant change in livestock slaughterings was the gross value of pigs slaughtered. This value decreased by 25.7% to \$51.7 in 1994-95. There was a rise of 13.3% in the value of sheep and lambs to \$136.1 million in 1994-95.

The value of wool production increased significantly by 25.4% to \$340.8 million in the year ended 31 March 1995. This was the first increase in value since 1989 when wool was valued at over \$600 million. The value of wool produced reached a low of \$271.8 million in the year ended 31 March 1994. The value of milk production increased by 9.1% to \$144.6 million. The value of eggs increased by 12.1% to \$16.7 million.



STRUCTURE OF THE AGRICULTURAL INDUSTRY

1

NUMBER OF ESTABLISHMENTS WITH AGRICULTURAL ACTIVITY BY INDUSTRY, HAVING EVAO \$5,000 AND OVER,¹
AT 31 MARCH 1993 TO 1995

ANZSIC code	Industry of establishment	1993	1994	1995
0111	Plant nurseries	128	123	128
0112	Cut flower and flower seed growing	109	111	122
0113	Vegetable growing	678	606	569
0114	Grape growing	1 390	1 468	1 730
0115	Apple and pear growing	165	158	141
0116	Stone fruit growing	480	368	383
0117	Kiwi fruit growing	—	—	—
0119	Fruit growing n.e.c.	825	797	697
0121	Grain growing	3 176	3 195	2 652
0122	Grain-sheep/beef cattle farming	3 504	3 253	3 588
0123	Sheep-beef cattle farming	1 164	1 162	1 108
0124	Sheep farming	2 023	1 838	1 617
0125	Beef cattle farming	1 174	1 145	1 224
0130	Dairy cattle farming	890	881	850
0141	Poultry farming (meat)	71	72	72
0142	Poultry farming (eggs)	58	55	47
0151	Pig farming	251	219	221
0152	Horse farming	187	149	109
0153	Deer farming	50	55	49
0159	Livestock farming n.e.c.	219	169	194
0161	Sugar cane growing	—	—	—
0162	Cotton growing	—	—	—
0169	Crop and plant growing n.e.c.	146	100	110
Total (ANZSIC Code 01)		16 688	15 924	15 611
02	Services to agriculture; hunting and trapping	21	20	24
03	Forestry and logging	—	1	—
04	Commercial fishing	3	4	6
Total (ANZSIC Division A)		16 712	15 949	15 641
All other ANZSIC Divisions		161	128	165
Unclassified		513	268	146
Total all industries		17 386	16 345	15 962

¹ Number of establishments with an EVAO of \$5,000 or more at the time of selection in the Agricultural Census. See Explanatory Note 4 on page 51.

2

NUMBER OF ESTABLISHMENTS WITH AGRICULTURAL ACTIVITY BY INDUSTRY, HAVING EVAO \$22,500 AND OVER, AT 31 MARCH 1993 TO 1995

ANZSIC code	Industry of establishment	1993	1994	1995
0111	Plant nurseries	81	115	115
0112	Cut flower and flower seed growing	88	67	94
0113	Vegetable growing	553	509	488
0114	Grape growing	1 155	1 287	1 403
0115	Apple and pear growing	144	141	124
0116	Stone fruit growing	348	233	273
0117	Kiwi fruit growing	—	—	—
0119	Fruit growing n.e.c.	656	672	574
0121	Grain growing	2 911	2 970	2 459
0122	Grain-sheep/beef cattle farming	3 314	3 084	3 395
0123	Sheep-beef cattle farming	987	963	937
0124	Sheep farming	1 523	1 290	1 201
0125	Beef cattle farming	538	508	540
0130	Dairy cattle farming	849	838	831
0141	Poultry farming (meat)	70	69	70
0142	Poultry farming (eggs)	54	53	42
0151	Pig farming	224	190	193
0152	Horse farming	87	76	59
0153	Deer farming	42	53	47
0159	Livestock farming n.e.c.	156	121	133
0161	Sugar cane growing	—	—	—
0162	Cotton growing	—	—	—
0169	Crop and plant growing n.e.c.	85	77	88
Total (ANZSIC Code 01)		13 865	13 316	13 066
02	Services to agriculture; hunting and trapping	14	9	13
03	Forestry and logging	—	—	—
04	Commercial fishing	1	1	—
Total (ANZSIC Division A)		13 880	13 326	13 079
All other ANZSIC Divisions		98	83	110
Unclassified		99	—	—
Total all Industries		14 077	13 409	13 189

3

NUMBER OF ESTABLISHMENTS WITH AGRICULTURAL ACTIVITY BY STATISTICAL DIVISION, HAVING EVAO \$5,000 AND OVER, AT 31 MARCH 1993 TO 1995

<i>Statistical division</i>	1993	1994	1995
Adelaide and Outer Adelaide	4 774	4 306	4 224
Yorke and Lower North	2 441	2 335	2 271
Murray Lands	4 133	3 930	3 848
South East	2 814	2 672	2 608
Eyre	1 736	1 663	1 618
Northern	1 488	1 439	1 383
South Australia	17 386	16 345	15 952

4

NUMBER OF ESTABLISHMENTS WITH AGRICULTURAL ACTIVITY BY STATISTICAL DIVISION, HAVING EVAO \$22,500 AND OVER, AT 31 MARCH 1993 TO 1995

<i>Statistical division</i>	1993	1994	1995
Adelaide and Outer Adelaide	3 154	2 926	2 911
Yorke and Lower North	2 122	2 039	2 002
Murray Lands	3 514	3 404	3 346
South East	2 319	2 200	2 164
Eyre	1 633	1 557	1 530
Northern	1 335	1 283	1 236
South Australia	14 077	13 409	13 189

NUMBER OF ESTABLISHMENTS WITH AGRICULTURAL ACTIVITY BY INDUSTRY OF ESTABLISHMENT AND EVAO
AT 31 MARCH 1995

ANZSIC code	Industry of establishment	Estimated value of agricultural operations			
		Less than \$5 000 ¹	\$5 000 – \$22 499	\$22 500 – \$49 999	\$50 000 – \$99 999
		no.	no.	no.	no.
0111	Plant nurseries	—	13	7	28
0112	Cut flower and flower seed growing	—	28	37	32
0113	Vegetable growing	9	72	90	101
0114	Grape growing	32	295	387	498
0115	Apple and pear growing	2	15	10	27
0116	Stone fruit growing	12	98	121	96
0117	Kiwi fruit growing	—	—	—	—
0119	Fruit growing n.e.c.	10	113	138	134
0121	Grain growing	11	182	257	516
0122	Grain-sheep/beef cattle farming	6	187	489	1 078
0123	Sheep-beef cattle farming	10	161	204	265
0124	Sheep farming	49	367	338	357
0125	Beef cattle farming	80	604	210	125
0130	Dairy cattle farming	—	19	67	151
0141	Poultry farming (meat)	—	2	—	5
0142	Poultry farming (eggs)	1	4	5	4
0151	Pig farming	6	22	24	37
0152	Horse farming	4	46	39	13
0153	Deer farming	—	2	6	15
0159	Livestock farming n.e.c.	7	54	48	41
0161	Sugar cane growing	—	—	—	—
0162	Cotton growing	—	—	—	—
0169	Crop and plant growing n.e.c.	3	19	19	20
Total (ANZSIC Code 01)		242	2 303	2 496	3 543
02	Services to agriculture; hunting and trapping	—	11	4	5
03	Forestry and logging	—	—	—	—
04	Commercial fishing	2	4	—	—
Total (ANZSIC Division A)		244	2 318	2 500	3 548
All other ANZSIC Divisions		8	47	43	25
Unclassified		146	—	—	—
Total all Industries		398	2 365	2 543	3 573

¹ See Explanatory Note 4 on page 51.

5

NUMBER OF ESTABLISHMENTS WITH AGRICULTURAL ACTIVITY BY INDUSTRY OF ESTABLISHMENT AND EVAO
AT 31 MARCH 1995 — *continued*

ANZSIC code	Industry of establishment	Estimated value of agricultural operations			Total establishments
		\$100 000 – \$199 999	\$200 000 – \$499 999	\$500 000 \$or more	
		no.	no.	no.	no.
0111	Plant nurseries	33	35	12	128
0112	Cut flower and flower seed growing	15	7	3	122
0113	Vegetable growing	82	97	118	569
0114	Grape growing	349	129	40	1 730
0115	Apple and pear growing	31	34	22	141
0116	Stone fruit growing	42	10	4	383
0117	Kiwi fruit growing	—	—	—	—
0119	Fruit growing n.e.c.	156	114	32	697
0121	Grain growing	948	682	56	2 652
0122	Grain-sheep/beef cattle farming	1 263	536	29	3 588
0123	Sheep-beef cattle farming	277	153	38	1 108
0124	Sheep farming	321	162	23	1 617
0125	Beef cattle farming	111	69	25	1 224
0130	Dairy cattle farming	354	238	21	850
0141	Poultry farming (meat)	3	37	25	72
0142	Poultry farming (eggs)	5	16	12	47
0151	Pig farming	59	53	20	221
0152	Horse farming	4	3	—	109
0153	Deer farming	11	12	3	49
0159	Livestock farming n.e.c.	26	12	6	194
0161	Sugar cane growing	—	—	—	—
0162	Cotton growing	—	—	—	—
0169	Crop and plant growing n.e.c.	23	18	8	110
Total (ANZSIC Code 01)		4 113	2 417	497	15 611
02	Services to agriculture; hunting and trapping	4	—	—	24
03	Forestry and logging	—	—	—	—
04	Commercial fishing	—	—	—	6
Total (ANZSIC Division A)		4 117	2 417	497	15 641
All other ANZSIC Divisions		17	14	11	165
Unclassified		—	—	—	146
Total all industries		4 134	2 431	508	15 952

6

NUMBER OF ESTABLISHMENTS WITH AGRICULTURAL ACTIVITY BY INDUSTRY AND AREA OF ESTABLISHMENT,
AT 31 MARCH 1995

ANZSIC code	Industry of establishment	Area of establishments					
		0 - 49 ha	50 - 99 ha	100 - 499 ha	500 - 999 ha	1 000 - 2 499 ha	2 500 - 4 999 ha
		no.	no.	no.	no.	no.	no.
0111	Plant nurseries	109	6	11	1	1	—
0112	Cut flower and flower seed growing	98	8	13	—	3	—
0113	Vegetable growing	356	68	92	23	20	10
0114	Grape growing	1 448	119	129	22	11	1
0115	Apple and pear growing	103	21	13	4	—	—
0116	Stone fruit growing	359	12	7	2	1	1
0117	Kiwi fruit growing	—	—	—	—	—	—
0119	Fruit growing n.e.c.	619	37	27	10	2	1
0121	Grain growing	42	94	730	734	750	235
0122	Grain-sheep/beef cattle farming	20	44	909	1 112	1 083	304
0123	Sheep-beef cattle farming	38	67	366	279	221	70
0124	Sheep farming	75	97	530	364	262	72
0125	Beef cattle farming	298	247	408	101	87	30
0130	Dairy cattle farming	83	149	502	82	28	6
0141	Poultry farming (meat)	56	12	4	—	—	—
0142	Poultry farming (eggs)	27	2	9	3	6	—
0151	Pig farming	73	26	86	18	15	2
0152	Horse farming	70	21	15	3	—	—
0153	Deer farming	20	6	18	4	—	—
0159	Livestock farming n.e.c.	135	16	18	11	10	3
0161	Sugar cane growing	—	—	—	—	—	—
0162	Cotton growing	—	—	—	—	—	—
0169	Crop and plant growing n.e.c.	21	18	40	17	13	—
Total (ANZSIC Code 01)		4 050	1 070	3 927	2 790	2 513	735
02	Services to agriculture; hunting and trapping	4	6	9	3	2	—
03	Forestry and logging	—	—	—	—	—	—
04	Commercial fishing	3	—	3	—	—	—
Total (ANZSIC Division A)		4 057	1 076	3 939	2 793	2 515	735
All other ANZSIC Divisions		72	29	42	8	13	—
Unclassified		59	25	33	16	8	2
Total all industries		4 188	1 130	4 014	2 817	2 536	737

6

NUMBER OF ESTABLISHMENTS WITH AGRICULTURAL ACTIVITY BY INDUSTRY AND AREA OF ESTABLISHMENT,
AT 31 MARCH 1995 — *continued*

ANZSIC code	Industry of establishment	Area of establishments			
		5 000 – 9 999 ha	10 000 – 24 999 ha	25 000 – 49 999 ha	50 000 – 99 999 ha
		no.	no.	no.	no.
0111	Plant nurseries	—	—	—	—
0112	Cut flower and flower seed growing	—	—	—	—
0113	Vegetable growing	—	—	—	—
0114	Grape growing	—	—	—	—
0115	Apple and pear growing	—	—	—	—
0116	Stone fruit growing	—	—	1	—
0117	Kiwi fruit growing	—	—	—	—
0119	Fruit growing n.e.c.	1	—	—	—
0121	Grain growing	55	10	2	—
0122	Grain-sheep/beef cattle farming	88	24	3	1
0123	Sheep-beef cattle farming	32	13	7	1
0124	Sheep farming	47	52	39	35
0125	Beef cattle farming	10	2	1	3
0130	Dairy cattle farming	—	—	—	—
0141	Poultry farming (meat)	—	—	—	—
0142	Poultry farming (eggs)	—	—	—	—
0151	Pig farming	—	1	—	—
0152	Horse farming	—	—	—	—
0153	Deer farming	1	—	—	—
0159	Livestock farming n.e.c.	—	—	—	—
0161	Sugar cane growing	—	—	—	—
0162	Cotton growing	—	—	—	—
0169	Crop and plant growing n.e.c.	1	—	—	—
Total (ANZSIC Code 01)		235	102	53	40
02	Services to agriculture; hunting and trapping	—	—	—	—
03	Forestry and logging	—	—	—	—
04	Commercial fishing	—	—	—	—
Total (ANZSIC Division A)		235	102	53	40
All other ANZSIC Divisions		—	1	—	—
Unclassified		2	1	—	—
Total all industries		237	104	53	40

NUMBER OF ESTABLISHMENTS WITH AGRICULTURAL ACTIVITY BY INDUSTRY AND AREA OF ESTABLISHMENT,
AT 31 MARCH 1995 — *continued*

ANZSIC code	Industry of establishment	Area of establishments			Total establishments
		100 000 – 199 999 ha	200 000 – 499 999 ha	500 000 ha or more	
		no.	no.	no.	no.
0111	Plant nurseries	—	—	—	128
0112	Cut flower and flower seed growing	—	—	—	122
0113	Vegetable growing	—	—	—	569
0114	Grape growing	—	—	—	1 730
0115	Apple and pear growing	—	—	—	141
0116	Stone fruit growing	—	—	—	383
0117	Kiwi fruit growing	—	—	—	—
0119	Fruit growing n.e.c.	—	—	—	697
0121	Grain growing	—	—	—	2 652
0122	Grain-sheep/beef cattle farming	—	—	—	3 588
0123	Sheep-beef cattle farming	5	8	1	1 108
0124	Sheep farming	25	16	3	1 617
0125	Beef cattle farming	5	17	15	1 224
0130	Dairy cattle farming	—	—	—	850
0141	Poultry farming (meat)	—	—	—	72
0142	Poultry farming (eggs)	—	—	—	47
0151	Pig farming	—	—	—	221
0152	Horse farming	—	—	—	109
0153	Deer farming	—	—	—	49
0159	Livestock farming n.e.c.	—	—	1	194
0161	Sugar cane growing	—	—	—	—
0162	Cotton growing	—	—	—	—
0169	Crop and plant growing n.e.c.	—	—	—	110
Total (ANZSIC Code 01)		35	41	20	15 611
02	Services to agriculture; hunting and trapping	—	—	—	24
03	Forestry and logging	—	—	—	—
04	Commercial fishing	—	—	—	6
Total (ANZSIC Division A)		35	41	20	15 641
All other ANZSIC Divisions		—	—	—	165
Unclassified		—	—	—	146
Total all industries		35	41	20	15 952

LAND MANAGEMENT

7

AREA AND LAND USE OF ESTABLISHMENTS WITH AGRICULTURAL ACTIVITY BY STATISTICAL DIVISION,
AT 31 MARCH 1995

Statistical division	Area of cereal crops ¹	Area of other crops	Area of orchard trees	Area of vegetables
	'000 ha	'000 ha	'000 ha	'000 ha
Adelaide and Outer Adelaide	107.1	31.9	4.0	4.5
Yorke and Lower North	616.1	120.1	0.1	—
Murray Lands	496.6	39.9	13.7	5.2
South East	72.5	53.3	0.2	2.9
Eyre	916.6	52.2	0.1	—
Northern	287.6	42.4	—	—
South Australia				
1995	2 496.4	339.9	18.1	12.6
1994	2 549.2	291.7	18.6	13.8
1993 ²	2 690.7	299.9	17.5	12.9

Statistical division	Area of holding	Area of non-agricultural land ³	Total area (agricultural and non-agricultural land)
	'000 ha	'000 ha	'000 ha
Adelaide and Outer Adelaide	854.5	535.9	1 390.4
Yorke and Lower North	1 694.6	163.6	1 858.2
Murray Lands	3 342.0	1 429.8	4 771.8
South East	1 674.7	462.9	2 137.6
Eyre	4 513.2	2 768.2	7 281.4
Northern	44 021.9	37 255.6	81 277.5
South Australia			
1995	56 101.0	42 615.9	98 716.9
1994	57 266.5	41 450.4	98 716.9
1993 ²	56 554.5	42 162.4	98 716.9

¹ Excludes pastures and grasses harvested for hay or seed which have been included in 'Sown pastures and grasses'.

² Figures have been collected on the basis of EVAO \$22,500 and over.

³ Comprises conserved land, forestry, urban and unused land such as vacant Crown land, commercially unused land on Aboriginal and other Crown reserves and waste land, ephemeral lakes, mangrove swamps, etc.

8

CROP STUBBLE DISPOSAL BY STATISTICAL DIVISION, YEAR ENDED 31 MARCH 1995

Statistical division	Area of holding on which the following crop stubble techniques were used			
	Stubble was burnt	Stubble was incorporated ¹	Stubble was mulched ²	Standing stubble was left intact ³
	ha	ha	ha	ha
Adelaide and Outer Adelaide	6 984.9	40 858.8	25 638.8	16 164.5
Yorke and Lower North	69 955.5	171 961.3	181 475.7	61 661.0
Murray Lands	22 237.0	101 099.6	28 858.1	71 892.2
South East	27 814.2	25 409.0	17 328.8	17 702.8
Eyre	43 936.3	195 337.4	52 544.9	149 664.0
Northern	13 964.9	106 130.0	49 402.3	35 032.0
South Australia	184 892.8	640 796.1	355 248.6	352 116.5

¹ Farm machinery used to plough stubble into soil.

² Farm machinery used to chop or slash stubble into smaller lengths.

³ No cultivation; crops sown by direct drilling.

9

PLANTING OF TREES ¹ BY STATISTICAL DIVISION, YEAR ENDED 31 MARCH 1995

<i>Statistical division</i>	<i>Planted from seedlings</i>	<i>Planted with seed</i>
	no.	hectares
Adelaide and Outer Adelaide	300 724	165.5
Yorke and Lower North	132 195	86.5
Murray Lands	153 368	430.0
South East	562 948	475.2
Eyre	197 728	117.5
Northern	77 537	25.6
South Australia	1 424 500	1 300.3

¹ Includes tea-trees

CROPS AND PASTURES

10

AREA, PRODUCTION AND YIELD OF CEREALS FOR GRAIN BY STATISTICAL DIVISION,
YEAR ENDED 31 MARCH 1995

Statistical division	Barley			Oats		
	Area	Production	Yield	Area	Production	Yield
	'000 ha	'000 t	t/ha	'000 ha	'000 t	t/ha
Adelaide and Outer Adelaide	40.0	53.2	1.3	9.7	15.8	1.6
Yorke and Lower North	293.2	531.7	1.8	15.5	20.1	1.3
Murray Lands	216.6	203.1	0.9	14.7	9.3	0.6
South East	31.0	62.3	2.0	6.4	14.0	2.2
Eyre	213.1	176.1	0.8	40.2	20.3	0.5
Northern	87.9	132.3	1.5	8.4	7.4	0.9
South Australia						
1995	881.9	1 158.7	1.3	94.9	87.0	0.9
1994	1 115.3	2 242.4	2.0	101.5	135.1	1.3
1993¹	1 023.3	1 855.3	1.8	122.9	164.5	1.3

Statistical division	Triticale			Wheat		
	Area	Production	Yield	Area	Production	Yield
	'000 ha	'000 t	t/ha	'000 ha	'000 t	t/ha
Adelaide and Outer Adelaide	3.0	4.7	1.6	40.1	56.2	1.4
Yorke and Lower North	10.4	16.6	1.6	271.4	483.5	1.8
Murray Lands	20.8	14.9	0.7	220.9	206.6	0.9
South East	1.8	3.8	2.1	28.8	71.6	2.5
Eyre	4.7	2.7	0.6	650.8	438.2	0.7
Northern	0.8	1.2	1.6	182.5	231.1	1.3
South Australia						
1995	41.4	43.9	1.1	1 394.7	1 487.4	1.1
1994	29.6	49.0	1.7	1 216.0	2 121.1	1.7
1993¹	27.3	53.7	2.0	1 419.5	2 421.2	1.7

¹ Figures have been collected on the basis of EVAO \$22,500 and over.

11

AREA, PRODUCTION AND YIELD OF LEGUMES FOR GRAIN BY STATISTICAL DIVISION, YEAR ENDED 31 MARCH 1995

Statistical division	Chick peas			Faba beans		
	Area	Production	Yield	Area	Production	Yield
	ha	tonnes	t/ha	ha	tonnes	t/ha
Adelaide and Outer Adelaide	1 223.0	745.9	0.6	4 089.9	2 779.3	0.7
Yorke and Lower North	7 238.8	4 522.9	0.6	8 127.4	5 096.0	0.6
Murray Lands	96.0	29.2	0.3	2 526.0	2 156.3	0.9
South East	327.3	206.7	0.6	9 163.4	14 652.8	1.6
Eyre	250.0	24.4	0.1	1 165.5	579.6	0.5
Northern	3 721.5	2 376.2	0.6	6 848.4	5 234.7	0.8
South Australia						
1995	12 856.6	7 905.3	0.6	31 920.6	30 498.7	1.0
1994	9 317.2	10 646.3	1.1	34 620.2	55 155.9	1.6
1993¹	11 907.8	9 017.3	0.8	35 074.0	47 711.2	1.4

Statistical division	Lupins for grain			Field peas for grain		
	Area	Production	Yield	Area	Production	Yield
	ha	tonnes	t/ha	ha	tonnes	t/ha
Adelaide and Outer Adelaide	4 807.5	3 995.0	0.8	18 077.7	13 688.4	0.8
Yorke and Lower North	9 465.4	5 767.5	0.6	84 899.5	83 122.6	1.0
Murray Lands	20 318.2	13 186.6	0.6	12 533.5	8 965.9	0.7
South East	20 319.4	19 086.3	0.9	5 804.1	9 548.6	1.6
Eyre	23 015.7	11 552.4	0.5	23 311.3	8 062.6	0.3
Northern	4 797.5	2 671.2	0.6	22 405.7	18 050.3	0.8
South Australia						
1995	82 723.7	56 259.0	0.7	167 031.8	141 438.4	0.8
1994	69 633.2	81 996.7	1.2	138 462.7	197 189.9	1.4
1993¹	57 637.6	97 364.6	1.7	143 690.1	151 945.5	1.1

¹ Figures have been collected on the basis of EVAO \$22,500 and over.

Statistical division	Oats for hay			Other cereals for hay		
	Area	Production	Yield	Area	Production	Yield
	'000 ha	'000 t	t/ha	'000 ha	'000 t	t/ha
Adelaide and Outer Adelaide	13.4	37.4	2.8	4.2	10.8	2.6
Yorke and Lower North	24.9	64.5	2.6	4.1	10.4	2.6
Murray Lands	12.2	24.1	2.0	6.7	12.8	1.9
South East	4.1	16.5	4.1	1.2	3.8	3.0
Eyre	6.0	9.7	1.6	2.8	3.4	1.2
Northern	7.0	15.6	2.2	1.0	2.2	2.2
South Australia						
1995	67.5	167.7	2.5	20.0	43.4	2.2
1994	47.3	169.0	3.6	18.0	57.0	3.2
1993¹	47.7	188.5	4.0	10.9	37.3	3.4

Statistical division	Total cereals for hay			Lucerne cut for hay		
	Area	Production	Yield	Area	Production	Yield
	'000 ha	'000 t	t/ha	'000 ha	'000 t	t/ha
Adelaide and Outer Adelaide	17.5	48.2	2.7	3.0	13.9	4.7
Yorke and Lower North	29.0	74.9	2.6	3.1	5.8	1.9
Murray Lands	18.9	36.9	2.0	3.5	19.5	5.5
South East	5.3	20.2	3.8	11.5	36.4	3.2
Eyre	8.8	13.1	1.5	0.1	0.4	2.8
Northern	8.1	17.8	2.2	1.3	2.0	1.5
South Australia						
1995	87.6	211.1	2.4	22.5	77.9	3.5
1994	65.3	226.0	3.5	19.4	72.4	3.7
1993¹	58.6	225.8	3.9	20.6	78.0	3.8

Statistical division	Other pastures cut for hay			Total pastures cut for hay		
	Area	Production	Yield	Area	Production	Yield
	'000 ha	'000 t	t/ha	'000 ha	'000 t	t/ha
Adelaide and Outer Adelaide	27.3	78.6	2.9	30.3	92.6	3.1
Yorke and Lower North	14.0	27.0	1.9	17.1	32.8	1.9
Murray Lands	9.3	18.0	1.9	12.8	37.4	2.9
South East	40.3	149.4	3.7	51.7	185.8	3.6
Eyre	3.0	4.9	1.6	3.1	5.3	1.7
Northern	4.4	6.9	1.6	5.7	8.9	1.6
South Australia						
1995	98.3	284.8	2.9	120.7	362.7	3.0
1994	80.5	284.1	3.5	99.9	356.5	3.6
1993¹	100.8	341.5	3.4	121.4	419.5	3.5

¹ Figures have been collected on the basis of EVAO \$22,500 and over.

13

AREA, PRODUCTION AND YIELD OF OILSEEDS BY STATISTICAL DIVISION, YEAR ENDED 31 MARCH 1995

Statistical division	Canola			Safflower		
	Area	Production	Yield	Area	Production	Yield
	hectares	tonnes	t/ha	hectares	tonnes	t/ha
Adelaide and Outer Adelaide	2 844	2 962	1.0	185	73	0.4
Yorke and Lower North	5 540	5 162	0.9	1 115	515	0.5
Murray Lands	1 107	922	0.8	191	107	0.6
South East	10 668	15 039	1.4	4 936	2 874	0.6
Eyre	3 177	1 215	0.4	961	121	0.1
Northern	1 183	641	0.5	482	153	0.3
South Australia						
1995	24 518	25 941	1.1	7 870	3 843	0.5
1994	10 758	18 104	1.7	10 004	9 608	1.0
1993¹	6 183	9 522	1.5	6 019	4 776	0.8

Statistical division	Sunflower		
	Area	Production	Yield
	hectares	tonnes	t/ha
Adelaide and Outer Adelaide	—	—	—
Yorke and Lower North	3	2	0.7
Murray Lands	—	—	—
South East	238	339	1.4
Eyre	20	22	1.1
Northern	14	4	0.3
South Australia			
1995	275	366	1.3
1994	1 281	1 327	1.0
1993¹	1 464	1 463	1.0

¹ Figures have been collected on the basis of EVAO \$22,500 and over.

14

GROSS VALUE OF PRINCIPAL CROPS AND PASTURES, YEARS ENDED 31 MARCH 1993 TO 1995p

	1993 ¹	1994	1995p
	\$m	\$m	\$m
Cereals for grain			
Barley	247.6	271.3	258.1
Oats	17.6	11.5	16.0
Triticale	6.7	5.6	7.9
Wheat	436.3	365.2	349.1
Other	1.6	2.9	2.6
Total cereals for grain	710.0	656.6	633.7
Crops for hay			
Oats	17.0	21.1	19.6
Other crops	4.0	7.0	4.1
Total crops for hay	21.0	28.1	23.7
Pastures and grasses			
Cut for hay	47.2	47.8	54.1
Harvested for seed	21.8	20.2	17.1
Total pastures and grasses	79.0	68.0	71.2

¹ Figures have been collected on the basis of EVAO \$22,500 and over.

	Area sown (hectares)					
	0 – 49 ha	50 – 99 ha	100 – 149 ha	150 – 199 ha	200 – 299 ha	300 – 399 ha
Barley for grain						
Number of establishments growing barley	1 520	1 315	955	601	820	359
Percentage of establishments growing barley	25.5	22.1	16.0	10.1	13.8	6.0
Area of barley (hectares)	41 993	92 637	113 723	101 108	192 552	119 707
Production of barley (tonnes)	66 426	131 139	150 106	135 980	250 626	151 361
Percentage of total barley production	5.7	11.3	13.0	11.7	21.6	13.1
Oats for grain						
Number of establishments growing oats	1 959	319	110	40	32	15
Percentage of establishments growing oats	78.9	12.8	4.4	1.6	1.3	0.6
Area of oats (hectares)	38 421	21 025	12 475	6 673	7 352	4 839
Production of oats (tonnes)	47 397	20 349	7 004	4 355	3 094	2 864
Percentage of total oats production	54.5	23.4	8.1	5.0	3.6	3.3
Triticale for grain						
Number of establishments growing triticale	387	145	56	22	28	10
Percentage of establishments growing triticale	59.2	22.2	8.6	3.4	4.3	1.5
Area of triticale (hectares)	8 773	10 168	6 472	3 561	5 994	3 307
Production of triticale (tonnes)	12 281	11 673	5 867	3 300	4 466	2 526
Percentage of total triticale production	28.0	26.6	13.4	7.5	10.2	5.8
Wheat for grain						
Number of establishments growing wheat	1 206	1 018	867	579	815	447
Percentage of establishments growing wheat	20.1	16.9	14.4	9.6	13.6	7.4
Area of wheat (hectares)	34 120	73 326	103 381	98 714	193 006	149 142
Production of wheat (tonnes)	56 946	120 799	157 845	137 584	251 542	168 629
Percentage of total wheat production	3.8	8.1	10.6	9.3	16.9	11.3

	Area sown (hectares)					Total
	400 – 499 ha	500 – 999 ha	1 000 – 1 499 ha	1 500 – 1 999 ha	2 000 ha and over	
Barley for grain						
Number of establishments growing barley	193	177	20	2	—	5 962
Percentage of establishments growing barley	3.2	3.0	0.3	—	—	100.0
Area of barley (hectares)	81 798	113 039	21 803	3 520	—	881 881
Production of barley (tonnes)	102 058	141 209	27 208	2 600	—	1 158 715
Percentage of total barley production	8.8	12.2	2.3	0.2	—	100.0
Oats for grain						
Number of establishments growing oats	7	2	—	—	—	2 484
Percentage of establishments growing oats	0.3	0.1	—	—	—	100.0
Area of oats (hectares)	3 012	1 130	—	—	—	94 927
Production of oats (tonnes)	1 807	110	—	—	—	86 982
Percentage of total oats production	2.1	0.1	—	—	—	100.0
Triticale for grain						
Number of establishments growing triticale	4	2	—	—	—	654
Percentage of establishments growing triticale	0.6	0.3	—	—	—	100.0
Area of triticale (hectares)	1 738	1 371	—	—	—	41 384
Production of triticale (tonnes)	1 869	1 880	—	—	—	43 862
Percentage of total triticale production	4.3	4.3	—	—	—	100.0
Wheat for grain						
Number of establishments growing wheat	378	534	131	24	14	6 013
Percentage of establishments growing wheat	6.3	8.9	2.2	0.4	0.2	100.0
Area of wheat (hectares)	163 002	356 412	151 380	39 112	33 145	1 394 740
Production of wheat (tonnes)	168 214	281 174	96 290	23 449	24 882	1 487 354
Percentage of total wheat production	11.3	18.9	6.5	1.6	1.7	100.0

16

NUMBER OF ESTABLISHMENTS GROWING CEREALS FOR GRAIN BY STATISTICAL DIVISION, YEAR ENDED 31 MARCH 1995

<i>Statistical division</i>	<i>Barley</i>	<i>Oats</i>	<i>Triticale</i>	<i>Wheat</i>
Adelaide and Outer Adelaide	570	379	98	508
Yorke and Lower North	1 761	597	193	1 718
Murray Lands	1 226	408	230	1 100
South East	518	224	45	366
Eyre	1 134	594	69	1 412
Northern	753	282	19	909
South Australia				
1995	5 962	2 484	654	6 013
1994	6 480	2 395	525	5 757
1993¹	6 178	2 730	472	5 916

¹ Figures have been collected on the basis of EVAO \$22,500 and over.

17

CEREAL CROP FORECAST FOR ALL PURPOSES BY STATISTICAL DIVISION, SEASON 1995-96

<i>Statistical division</i>	<i>Area sown or intended to be sown in 1995-96</i>				
	<i>Barley</i>	<i>Field peas</i>	<i>Lupins</i>	<i>Oats</i>	<i>Wheat</i>
	'000 ha	'000 ha	'000 ha	'000 ha	'000 ha
Adelaide and Outer Adelaide	44.3	17.0	5.7	24.7	41.9
Yorke and Lower North	297.3	80.7	8.8	45.9	280.8
Murray Lands	247.9	14.1	20.6	32.7	231.6
South East	35.6	8.2	18.4	11.5	29.5
Eyre	236.0	19.2	22.5	78.9	679.7
Northern	99.1	21.7	6.8	23.6	189.4
South Australia	960.2	160.9	82.7	217.2	1 452.9

HORTICULTURE

18

NUMBER OF TREES, PRODUCTION AND YIELD¹ FOR CITRUS AND POME FRUIT BY STATISTICAL DIVISION, YEAR ENDED 31 MARCH 1995

Statistical division	Apples				Lemons and limes			
	Trees under 6 years	Trees 6 years and over	Production	Yield	Trees under 6 years	Trees 6 years and over	Production	Yield
	'000	'000	'000 kg	kg/tree	'000	'000	'000 kg	kg/tree
Adelaide and Outer Adelaide	180.8	451.3	20 447.0	45.3	3.0	3.8	233.8	62.0
Yorke and Lower North	—	—	—	—	—	—	—	—
Murray Lands	26.9	22.8	1 340.4	58.8	16.5	93.2	13 744.4	147.5
South East	68.8	57.6	1 808.6	31.4	2.0	—	—	—
Eyre	—	—	—	—	—	—	—	—
Northern	—	—	—	—	—	—	—	—
South Australia								
1995	276.5	531.8	23 596.1	44.4	21.5	96.9	13 978.2	144.2
1994	250.5	506.5	23 088.9	45.6	17.7	90.3	15 013.4	166.3
1993 ²	285.9	442.1	26 633.5	60.2	16.5	90.2	16 054.7	178.0

Statistical division	Mandarins				Nashi			
	Trees under 6 years	Trees 6 years and over	Production	Yield	Trees under 6 years	Trees 6 years and over	Production	Yield
	'000	'000	'000 kg	kg/tree	'000	'000	'000 kg	kg/tree
Adelaide and Outer Adelaide	—	—	—	—	5.1	18.7	353.9	18.9
Yorke and Lower North	—	—	—	—	—	—	—	—
Murray Lands	85.1	135.9	11 135.6	82.0	3.7	1.5	45.9	31.2
South East	—	—	—	—	—	—	—	—
Eyre	—	—	—	—	—	—	—	—
Northern	—	—	—	—	—	—	—	—
South Australia								
1995	85.1	135.9	11 135.9	82.0	8.7	20.2	399.8	19.8
1994	85.4	119.5	10 889.8	91.1	21.4	14.7	474.0	32.3
1993 ²	72.2	113.9	10 878.8	95.5	34.7	2.1	448.7	211.8

Statistical division	Oranges				Pears (excluding nashi)			
	Trees under 6 years	Trees 6 years and over	Production	Yield	Trees under 6 years	Trees 6 years and over	Production	Yield
	'000	'000	'000 kg	kg/tree	'000	'000	'000 kg	kg/tree
Adelaide and Outer Adelaide	0.1	0.6	51.3	83.8	14.7	59.2	3 703.2	62.5
Yorke and Lower North	—	—	—	—	—	—	—	—
Murray Lands	339.0	1 831.2	199 129.9	108.7	3.6	20.0	1 709.1	85.3
South East	—	—	—	—	4.0	—	—	—
Eyre	—	—	—	—	—	—	—	—
Northern	—	—	—	—	—	—	—	—
South Australia								
1995	339.1	1 831.9	199 181.2	108.7	22.3	79.3	5 412.3	68.9
1994	373.7	1 868.9	220 193.6	117.8	25.3	85.9	6 686.1	77.8
1993 ²	413.4	1 826.9	216 964.3	118.8	17.4	76.1	5 695.3	74.8

¹ Yield is calculated for trees 6 years and over only. However, the production figure used to calculate yield includes any contribution by trees 6 years and under. In most cases this contribution is relatively insignificant, but in some instances it can distort yield figures.

² Figures have been collected on the basis of EVAC \$22,500 and over.

NUMBER OF TREES, PRODUCTION AND YIELD¹ FOR STONE FRUIT BY STATISTICAL DIVISION,
YEAR ENDED 31 MARCH 1995

Statistical division	Apricots				Cherries			
	Trees under 6 years	Trees 6 years and over	Production	Yield	Trees under 6 years	Trees 6 years and over	Production	Yield
	'000	'000	'000 kg	kg/tree	'000	'000	'000 kg	kg/tree
Adelaide and Outer Adelaide	8.8	27.3	598.2	21.9	58.5	40.9	448.9	11.0
Yorke and Lower North	—	0.1	0.3	4.2	—	—	—	—
Murray Lands	133.9	321.1	16 738.8	52.1	4.7	0.7	16.3	22.4
South East	0.4	—	—	—	6.7	—	11.4	—
Eyre	0.2	—	0.1	—	—	—	—	—
Northern	0.1	0.5	11.8	25.1	0.1	—	0.1	1.7
South Australia								
1995	143.3	348.9	17 349.1	49.7	70.1	41.6	476.6	11.4
1994	164.2	355.8	13 524.0	38.0	83.0	46.0	421.9	9.2
1993²	166.0	344.1	17 170.9	49.9	64.8	41.6	235.8	5.7

Statistical division	Nectarines				Peaches			
	Trees under 6 years	Trees 6 years and over	Production	Yield	Trees under 6 years	Trees 6 years and over	Production	Yield
	'000	'000	'000 kg	kg/tree	'000	'000	'000 kg	kg/tree
Adelaide and Outer Adelaide	6.3	3.0	79.4	26.1	4.6	13.9	383.3	27.6
Yorke and Lower North	—	—	—	—	—	—	—	—
Murray Lands	35.8	15.4	1 160.9	75.3	86.3	104.4	7 983.3	76.5
South East	—	—	—	—	—	—	—	—
Eyre	—	—	—	—	—	—	—	—
Northern	—	0.6	16.6	27.6	2.3	3.9	76.7	19.9
South Australia								
1995	42.1	19.1	1 256.9	66.0	93.2	122.1	8 443.3	69.2
1994	34.8	21.3	981.9	45.3	89.9	133.0	8 075.3	60.7
1993²	28.6	21.3	927.1	43.6	81.1	125.5	8 338.8	66.4

Statistical division	Plums and prunes			
	Trees under 6 years	Trees 6 years and over	Production	Yield
	'000	'000	'000 kg	kg/tree
Adelaide and Outer Adelaide	4.4	12.9	288.0	22.4
Yorke and Lower North	—	—	0.2	—
Murray Lands	45.2	75.8	3 862.7	51.0
South East	—	—	—	—
Eyre	—	—	—	—
Northern	0.2	1.1	15.3	13.5
South Australia				
1995	49.8	89.8	4 166.2	46.4
1994	49.3	85.0	3 288.4	38.7
1993²	48.8	77.6	3 568.3	46.0

¹ Yield is calculated for trees 6 years and over only. However, the production figure used to calculate yield includes any contribution by trees 6 years and under. In most cases this contribution is relatively insignificant, but in some instances it can distort yield figures.

² Figures have been collected on the basis of EVAO \$22,500 and over.

Statistical division	Almonds ¹				Avocados ²			
	Trees under 6 years '000	Trees 6 years and over '000	Production '000 kg	Yield kg/tree	Trees under 6 years '000	Trees 6 years and over '000	Production '000 kg	Yield kg/tree
Adelaide and Outer Adelaide	67.1	264.6	787.4	3.0	0.4	0.7	6.4	8.9
Yorke and Lower North	—	0.5	0.1	0.1	—	—	—	—
Murray Lands	129.6	196.1	1 342.6	6.8	11.9	16.0	497.0	31.1
South East	—	3.3	1.7	0.5	—	—	—	—
Eyre	4.0	15.4	0.1	—	—	—	—	—
Northern	—	0.1	—	—	—	—	0.2	—
South Australia								
1995	200.7	480.0	2 132.0	4.4	12.3	16.7	503.6	30.1
1994	187.0	485.9	2 098.8	4.3	9.3	16.1	573.6	35.7
1993 ²	173.3	418.0	1 682.0	4.0	5.6	16.1	636.2	39.6

Statistical division	Kiwi fruit ³				Raspberries ³			
	Area not yet bearing ha	Bearing area ha	Production '000 kg	Yield kg/ha	Area not yet bearing ha	Bearing area ha	Production '000 kg	Yield kg/ha
Adelaide and Outer Adelaide	—	9.7	90.0	9.3	1.7	5.5	12.2	2.2
Yorke and Lower North	—	—	—	—	—	—	—	—
Murray Lands	1.9	—	—	—	—	—	—	—
South East	—	—	—	—	0.2	0.1	0.1	0.8
Eyre	—	—	—	—	—	—	—	—
Northern	—	—	—	—	—	—	—	—
South Australia								
1995	1.9	9.7	90.0	9.3	1.9	5.6	12.3	2.2
1994	0.6	9.7	137.0	14.1	0.7	4.9	21.9	4.5
1993 ²	0.5	9.8	138.1	14.1	1.1	5.8	33.0	5.7

Statistical division	Strawberries ³			
	Area not yet bearing ha	Bearing area ha	Production '000 kg	Yield kg/ha
Adelaide and Outer Adelaide	15.2	56.5	977.5	17.3
Yorke and Lower North	—	1.0	15.5	15.5
Murray Lands	—	2.0	20.0	10.0
South East	—	1.5	22.0	14.7
Eyre	—	—	—	—
Northern	—	—	—	—
South Australia				
1995	15.2	61.0	1 035.0	17.0
1994	12.7	79.7	1 269.0	15.9
1993 ²	20.3	69.1	1 022.5	14.8

¹ Yield is calculated for trees 6 years and over only. However, the production figure used to calculate yield includes any contribution by trees 6 years and under. In most cases this contribution is relatively insignificant, but in some instances it can distort yield figures.

² Figures have been collected on the basis of EVAO \$22,599 and over.

³ Yield is calculated from bearing hectares only.

21

GROSS VALUE OF CITRUS, POME, OTHER FRUIT AND NUTS, YEAR ENDED 31 MARCH 1993 TO 1995p

	1993 ¹	1994	1995p
	\$m	\$m	\$m
Apples	32.4	25.8	24.0
Apricots	22.8	18.4	21.8
Avocados	2.0	2.0	1.9
Cherries	4.5	2.5	3.1
Grapes	114.9	153.6	308.8
Lemons and limes	4.8	3.7	4.7
Mandarins	5.9	9.5	6.3
Nectarines	1.7	1.6	2.7
Oranges	77.0	83.6	80.2
Peaches	3.3	4.9	4.4
Pears	5.8	5.5	5.9
Plums and prunes	5.1	4.0	5.9
Strawberries	5.5	7.7	7.9
Other, including nuts	11.5	21.4	16.8
Total	297.2	344.2	494.4

¹ Figures have been collected on the basis of EVAO \$22,500 and over

22

AREA OF VINES, PRODUCTION OF GRAPES¹ BY STATISTICAL DIVISION, YEAR ENDED 31 MARCH 1995

Statistical division	Area of vines at harvest			Grape production			
	Not yet bearing (planted or grafted)			Wine making	Drying	Table and other	Total
	Planted or grafted prior to collection year	During collection year	Bearing				
	ha	ha	ha	tonnes	tonnes	tonnes	tonnes
Adelaide and Outer Adelaide	753.6	945.7	10 027.1	80 908.3	48.5	11.8	80 968.6
Yorke and Lower North	95.8	187.4	2 054.9	14 297.3	3.0	—	14 300.3
Murray Lands	941.9	1 010.7	10 418.9	174 771.3	6 604.9	2 871.4	184 247.6
South East	479.9	941.6	4 715.7	50 102.8	2.3	0.2	50 105.3
Eyre	0.5	1.2	10.2	63.8	—	—	63.8
Northern	2.5	5.5	10.0	26.0	55.8	30.0	111.8
South Australia							
1995	2 274.2	3 092.1	27 238.8	320 169.5	6 714.5	2 913.4	329 797.4
1994	1 252.8	1 382.0	24 842.3	338 558.0	9 879.6	2 498.5	350 936.1
1993²	1 190.0	960.9	23 983.0	274 856.0	8 914.1	2 367.5	286 137.6

¹ Varietal information is available in "Australian Wine and Grape Industry", Catalogue No. 1329.0.

² Figures have been collected on the basis of EVAO \$22,500 and over.

	Units	1993 ¹	1994	1995
Beans — French and runner				
Area	ha	32.9	90.4	59.7
Production	t	102.9	322.8	194.4
Yield	t/ha	3.1	3.6	3.3
Beetroot				
Area	ha	12.2	12.9	13.7
Production	t	101.6	206.7	128.1
Yield	t/ha	8.3	16.0	9.4
Broccoli				
Area	ha	324.7	395.1	442.2
Production	t	2 047.7	2 408.8	2 398.1
Yield	t/ha	6.3	6.1	5.4
Brussels sprouts				
Area	ha	140.2	107.6	93.2
Production	t	2 241.4	2 537.9	2 143.0
Yield	t/ha	16.0	23.6	23.0
Cabbages				
Area	ha	179.4	188.1	175.8
Production	t	5 967.1	3 395.9	5 070.9
Yield	t/ha	33.3	18.1	28.8
Capsicum, chillies and peppers				
Area	ha	74.5	79.0	103.5
Production	t	1 001.8	1 097.9	1 643.5
Yield	t/ha	13.4	13.9	15.9
Carrots				
Area	ha	581.9	621.3	844.4
Production	t	22 959.7	22 884.5	36 611.7
Yield	t/ha	39.5	36.8	43.4
Cauliflower				
Area	ha	257.2	235.6	278.1
Production	t	7 289.9	5 440.9	7 088.7
Yield	t/ha	28.3	23.1	25.5
Celery				
Area	ha	43.2	42.6	45.5
Production	t	2 495.6	4 166.6	4 036.3
Yield	t/ha	57.8	97.8	88.7
Chinese cabbages				
Area	ha	27.8	11.7	24.4
Production	t	145.4	126.0	52.5
Yield	t/ha	5.2	10.8	2.2
Cucumbers				
Area	ha	40.1	48.6	54.0
Production	t	1 507.1	1 693.3	1 778.6
Yield	t/ha	37.6	34.8	32.9
Green peas (pod weight)				
Area	ha	26.0	73.1	34.5
Production	t	94.4	330.1	79.8
Yield	t/ha	3.6	4.5	2.3
Leeks				
Area	ha	24.9	30.8	29.1
Production	t	1 086.5	1 111.5	700.5
Yield	t/ha	43.6	36.1	24.1
Lettuces				
Area	ha	329.2	288.8	282.0
Production	t	9 217.0	7 143.3	6 184.8
Yield	t/ha	28.0	24.7	21.9
Marrows				
Area	ha	15.2	19.5	6.7
Production	t	133.9	128.4	38.6
Yield	t/ha	8.8	6.6	5.8
Melons — water				
Area	ha	28.1	32.3	17.7
Production	t	673.5	698.0	557.7
Yield	t/ha	24.0	21.6	31.5

	Units	1993 ¹	1994	1995
Melons — rock and cantaloupe				
Area	ha	217.6	182.1	190.4
Production	t	4 876.4	4 517.2	5 772.0
Yield	t/ha	22.4	24.8	30.3
Mushrooms				
Area	ha	13.9	9.6	11.2
Production	t	1 449.7	1 938.3	1 675.6
Yield	t/ha	104.3	201.9	149.6
Onions — white and brown				
Area	ha	904.8	1 170.3	1 194.7
Production	t	35 119.8	53 300.6	51 394.4
Yield	t/ha	38.8	45.5	43.0
Parsley				
Area	ha	9.4	11.2	11.8
Production	t	170.2	159.4	168.7
Yield	t/ha	18.1	14.2	14.3
Parsnips				
Area	ha	20.1	19.3	12.5
Production	t	192.3	223.7	196.9
Yield	t/ha	9.6	11.6	15.8
Potatoes				
Area	ha	6 275.5	7 085.2	7 830.9
Production	t	179 272.8	202 645.0	247 414.1
Yield	t/ha	28.6	28.6	31.6
Pumpkins				
Area	ha	512.1	410.2	378.9
Production	t	10 374.2	8 945.4	7 673.4
Yield	t/ha	20.3	21.8	20.3
Swedes				
Area	ha	22.5	19.9	23.0
Production	t	412.5	499.8	553.0
Yield	t/ha	18.3	25.1	24.0
Sweet corn				
Area	ha	70.7	68.1	58.0
Production	t	834.8	726.9	652.3
Yield	t/ha	11.8	10.7	11.2
Tomatoes				
Area	ha	199.4	179.8	165.3
Production	t	6 671.8	6 038.0	5 442.3
Yield	t/ha	33.5	33.6	32.9
Zucchini				
Area	ha	33.4	25.7	23.1
Production	t	206.6	152.1	165.0
Yield	t/ha	6.2	5.9	7.1

¹ Figures have been collected on the basis of EVAO \$22,500 and over.

	Units	Adelaide and Outer Adelaide	Yorke and Lower North	Murray Lands	South East	Eyre	Northern
Beans — French and runner							
Area	ha	27.7	—	31.3	0.2	—	0.5
Production	t	91.0	—	101.4	1.5	—	0.5
Yield	t/ha	3.3	—	3.2	7.5	—	1.0
Beetroot							
Area	ha	13.2	—	0.5	—	—	—
Production	t	125.1	—	3.0	—	—	—
Yield	t/ha	9.5	—	6.0	—	—	—
Broccoli							
Area	ha	250.2	—	145.0	47.0	—	—
Production	t	1 555.4	—	638.8	203.9	—	—
Yield	t/ha	6.2	—	4.4	4.3	—	—
Brussels sprouts							
Area	ha	93.2	—	—	—	—	—
Production	t	2 143.0	—	—	—	—	—
Yield	t/ha	23.0	—	—	—	—	—
Cabbages							
Area	ha	155.8	—	4.8	15.0	0.2	—
Production	t	4 963.6	—	92.0	11.2	4.1	—
Yield	t/ha	31.9	—	19.2	0.7	20.5	—
Capsicum, chillies and peppers							
Area	ha	58.4	—	43.6	—	—	1.5
Production	t	1 025.7	—	611.8	—	—	6.0
Yield	t/ha	17.6	—	14.0	—	—	4.0
Carrots							
Area	ha	281.8	—	516.1	46.3	0.2	—
Production	t	11 018.2	—	23 075.5	2 510.8	7.2	—
Yield	t/ha	39.1	—	44.7	54.2	36.0	—
Cauliflower							
Area	ha	260.9	—	13.0	4.0	0.2	—
Production	t	6 802.2	—	278.5	4.0	4.0	—
Yield	t/ha	26.1	—	21.4	1.0	20.0	—
Celery							
Area	ha	45.5	—	—	—	—	—
Production	t	4 036.3	—	—	—	—	—
Yield	t/ha	88.7	—	—	—	—	—
Chinese cabbages							
Area	ha	5.6	—	—	18.8	—	—
Production	t	40.0	—	—	12.5	—	—
Yield	t/ha	7.1	—	—	0.7	—	—
Cucumbers							
Area	ha	42.7	—	10.5	0.5	—	0.3
Production	t	1 445.4	—	327.3	0.3	—	5.6
Yield	t/ha	33.9	—	31.2	0.6	—	18.7
Green peas (pod weight)							
Area	ha	28.5	—	3.0	—	—	3.0
Production	t	64.3	—	7.5	—	—	8.0
Yield	t/ha	2.3	—	2.5	—	—	2.7
Leeks							
Area	ha	28.4	—	0.1	0.6	—	—
Production	t	681.0	—	1.5	18.0	—	—
Yield	t/ha	24.0	—	15.0	30.0	—	—
Lettuces							
Area	ha	267.2	—	11.6	3.0	0.2	—
Production	t	5 980.3	—	201.0	—	3.5	—
Yield	t/ha	22.4	—	17.3	—	17.5	—
Marrows							
Area	ha	1.2	—	4.5	1.0	—	—
Production	t	8.5	—	27.1	3.0	—	—
Yield	t/ha	7.1	—	6.0	3.0	—	—
Melons — water							
Area	ha	7.2	—	10.5	—	—	—
Production	t	320.2	—	237.5	—	—	—
Yield	t/ha	44.5	—	22.6	—	—	—

	Units	Adelaide and Outer Adelaide	Yorke and Lower North	Murray Lands	South East	Eyre	Northern
Melons — rock and cantaloupe							
Area	ha	0.2	—	190.2	—	—	—
Production	t	0.4	—	5 771.6	—	—	—
Yield	t/ha	2.0	—	30.3	—	—	—
Mushrooms							
Area	ha	11.2	—	—	—	—	—
Production	t	1 675.6	—	—	—	—	—
Yield	t/ha	149.6	—	—	—	—	—
Onions — white and brown							
Area	ha	139.9	—	792.7	262.1	—	—
Production	t	6 040.6	—	34 075.8	11 278.0	—	—
Yield	t/ha	43.2	—	43.0	43.0	—	—
Parsley							
Area	ha	11.8	—	—	—	—	—
Production	t	168.7	—	—	—	—	—
Yield	t/ha	14.3	—	—	—	—	—
Parsnips							
Area	ha	12.5	—	—	—	—	—
Production	t	196.9	—	—	—	—	—
Yield	t/ha	15.8	—	—	—	—	—
Potatoes							
Area	ha	2 513.9	—	2 873.3	2 428.0	5.0	10.7
Production	t	75 223.8	—	82 002.6	89 863.7	144.0	180.0
Yield	t/ha	29.9	—	28.5	37.0	28.8	16.8
Pumpkins							
Area	ha	18.2	—	357.2	1.5	2.0	—
Production	t	211.1	—	7 432.8	21.5	8.0	—
Yield	t/ha	11.6	—	20.8	14.3	4.0	—
Swedes							
Area	ha	23.0	—	—	—	—	—
Production	t	553.0	—	—	—	—	—
Yield	t/ha	24.0	—	—	—	—	—
Sweet corn							
Area	ha	10.4	—	47.6	—	—	—
Production	t	106.0	—	546.3	—	—	—
Yield	t/ha	10.2	—	11.5	—	—	—
Tomatoes							
Area	ha	87.0	—	75.3	1.0	0.1	1.9
Production	t	2 469.7	—	2 928.5	—	4.3	39.8
Yield	t/ha	28.4	—	38.9	—	43.0	20.9
Zucchini							
Area	ha	5.5	—	10.3	1.0	2.0	4.3
Production	t	67.7	—	51.3	2.0	1.0	42.9
Yield	t/ha	12.3	—	5.0	2.0	0.5	10.0

25

GROSS VALUE OF VEGETABLES FOR HUMAN CONSUMPTION, YEARS ENDED 31 MARCH 1993 TO 1995p

	1993 ¹	1994	1995p
	\$m	\$m	\$m
Beans — French and runner	0.3	0.8	0.6
Beetroot	0.1	0.2	0.2
Broccoli	2.8	2.3	3.6
Cabbages and brussel sprouts	5.5	4.5	4.6
Capsicum, chillies and peppers	2.2	2.6	4.1
Carrots	14.7	16.5	36.8
Cauliflower	3.0	2.3	3.4
Celery	1.8	2.4	2.8
Cucumbers	1.8	2.9	2.8
Green peas (pod weight)	0.2	0.3	0.2
Leeks	1.2	1.8	1.4
Lettuces	7.0	5.1	5.5
Marrows and squashes	0.3	0.3	0.2
Melons — water	0.2	0.3	0.1
Melons — rock and cantaloupe	4.4	5.4	3.8
Mushrooms	6.0	8.8	7.0
Onions — white and brown	16.8	38.6	29.8
Parsley	0.7	0.4	0.7
Parsnips	0.4	0.5	0.3
Potatoes	58.9	65.2	78.5
Pumpkins	3.4	4.5	4.2
Swedes	0.5	0.6	0.7
Sweet corn	0.7	0.5	1.0
Tomatoes	8.4	7.1	15.9
Zucchini	0.2	0.2	0.2
Other vegetables	1.4	1.4	4.5
Total	142.9	175.5	212.9

¹ Figures have been collected on the basis of EVAO \$22,500 and over.

26

AREA OF NURSERIES, CUT FLOWERS AND CULTIVATED TURF BY STATISTICAL DIVISION, YEAR ENDED 31 MARCH 1995

	Nurseries	Cut flowers	Cultivated turf	Total
Statistical division	ha	ha	ha	ha
Adelaide and Outer Adelaide	204.2	246.3	42.0	492.5
Yorke and Lower North	5.6	3.2	0.5	9.3
Murray Lands	63.4	70.9	35.0	169.3
South East	7.5	164.1	14.0	185.6
Eyre	1.2	7.0	—	8.2
Northern	0.5	0.5	—	1.0
South Australia	282.4	492.0	91.5	865.9

LIVESTOCK AND LIVESTOCK PRODUCTS

27

MEAT CATTLE NUMBERS BY STATISTICAL DIVISION, AT 31 MARCH 1995

<i>Statistical division</i>	<i>Bulls and bull calves intended for service</i>	<i>Cows and heifers one year and over</i>	<i>Heifer and other calves under one year</i>	<i>Other cattle one year and over</i>	<i>Total meat cattle</i>	<i>Per cent of total meat cattle herd</i>
	'000	'000	'000	'000	'000	%
Adelaide and Outer Adelaide	4.0	62.8	35.5	28.1	130.4	12.3
Yorke and Lower North	1.4	21.9	13.7	11.8	48.8	4.6
Murray Lands	2.3	54.5	36.9	16.8	110.5	10.4
South East	15.6	268.7	136.3	106.8	527.3	49.6
Eyre	0.8	15.7	10.4	3.4	30.3	2.8
Northern	4.6	105.9	57.9	47.9	216.3	20.3
South Australia						
1995	28.7	529.5	290.7	214.8	1 063.7	100.0
1994	27.9	576.2	276.2	175.3	1 055.6	100.0

28

NUMBER OF ESTABLISHMENTS WITH MEAT CATTLE BY STATISTICAL DIVISION, AT 31 MARCH 1995

<i>Statistical division</i>	<i>Bulls and bull calves intended for service</i>	<i>Cows and heifers one year and over</i>	<i>Heifer and other calves under one year</i>	<i>Other cattle one year and over</i>	<i>Total establishments with meat cattle</i>	<i>Per cent of total cattle establishments</i>
Adelaide and Outer Adelaide	1 067	1 303	1 300	905	1 632	28.3
Yorke and Lower North	405	497	521	338	607	10.5
Murray Lands	517	582	590	343	707	12.2
South East	1 525	1 677	1 498	1 403	1 943	33.6
Eyre	309	373	364	190	392	6.8
Northern	384	450	438	264	494	8.6
South Australia						
1995	4 207	4 882	4 711	3 443	6 775	100.0
1994	4 267	4 910	4 521	2 818	6 734	100.0

<i>Herd size</i>	1994		1995	
	<i>Establishments</i>	<i>Percentage of establishments with meat cattle</i>	<i>Establishments</i>	<i>Percentage of establishments with meat cattle</i>
	no.	%	no.	%
1-29	1 539	26.8	1 503	26.0
30-49	830	14.5	855	14.8
50-69	571	10.0	618	10.7
70-99	652	11.4	612	10.6
100-149	603	10.5	642	11.1
150-199	363	6.3	361	6.3
200-299	403	7.0	402	7.0
300-399	225	3.9	227	3.9
400-499	134	2.3	128	2.2
500-699	152	2.7	169	2.9
700-999	111	1.9	105	1.8
1 000-1 499	57	1.0	62	1.1
1 500-1 999	42	0.7	38	0.7
2 000-4 999	40	0.7	42	0.7
5 000-9 999	9	0.2	10	0.2
10 000 and over	3	0.1	1	0.0
Total	5 734	100.0	5 775	100.0

<i>Herd size</i>	1994		1995	
	<i>Meat cattle</i>	<i>Percentage of total meat cattle herd</i>	<i>Meat cattle</i>	<i>Percentage of total meat cattle herd</i>
	'000	%	'000	%
1-29	21.4	2.0	21.5	2.0
30-49	32.0	3.0	33.2	3.1
50-69	33.5	3.2	36.3	3.4
70-99	54.0	5.1	50.4	4.7
100-149	72.9	6.9	77.4	7.3
150-199	62.5	5.9	62.5	5.9
200-299	98.1	9.3	97.4	9.2
300-399	76.1	7.2	78.3	7.4
400-499	59.0	5.6	56.7	5.3
500-699	88.7	8.4	99.8	9.4
700-999	91.8	8.7	87.9	8.3
1 000-1 499	70.5	6.7	74.8	7.0
1 500-1 999	73.3	6.9	64.7	6.1
2 000-4 999	117.3	11.1	127.7	12.0
5 000-9 999	64.9	6.1	74.8	7.0
10 000 and over	39.6	3.8	20.1	1.9
Total	1 055.6	100.0	1 063.7	100.0

30

MILK CATTLE NUMBERS BY STATISTICAL DIVISION, AT 31 MARCH 1995

<i>Statistical division</i>	<i>Cows in milk and dry</i>	<i>Other milk cattle</i>	<i>Total milk cattle</i> ¹	<i>Per cent of total cattle herd</i>
	'000	'000	'000	%
Adelaide and Outer Adelaide	43.1	24.5	67.5	44.3
Yorke and Lower North	3.5	1.8	5.3	3.5
Murray Lands	29.1	17.1	46.2	30.3
South East	20.3	12	32.3	21.2
Eyre	0.1	0.1	0.2	0.1
Northern	0.6	0.3	0.9	0.6
South Australia				
1995	96.6	55.7	152.4	100.0
1994	93.8	52.2	146.6	100.0

¹ Excluding house cows and heifers.

31

NUMBER OF ESTABLISHMENTS¹ WITH MILK CATTLE BY TYPE BY STATISTICAL DIVISION, AT 31 MARCH 1995

<i>Statistical division</i>	<i>Cows in milk and dry</i>	<i>Other milk cattle</i>	<i>Total establishments with milk cattle</i>
Adelaide and Outer Adelaide	458	450	488
Yorke and Lower North	45	43	47
Murray Lands	193	202	218
South East	191	187	207
Eyre	12	11	14
Northern	15	11	15
South Australia			
1995	914	904	989
1994	968	978	1 104

¹ Excludes establishments with house cows and heifers only.

<i>Herd size</i>	1994		1995	
	<i>Establishments</i>	<i>Percentage of milk cattle establishments</i>	<i>Establishments</i>	<i>Percentage of milk cattle establishments</i>
	no.	%	no.	%
1-49	278	25.2	187	18.9
50-99	221	20.0	183	18.5
100-149	224	20.3	193	19.5
150-199	145	13.1	169	17.1
200-249	103	9.3	102	10.3
250-299	51	4.6	54	5.5
300-349	29	2.6	35	3.5
350-399	20	1.8	21	2.1
400-499	16	1.4	22	2.2
500 and over	17	1.5	23	2.3
Total	1 104	100.0	989	100.0

<i>Herd size</i>	1994		1995	
	<i>Milk cattle</i>	<i>Percentage of total milk cattle</i>	<i>Milk cattle</i>	<i>Percentage of total milk cattle</i>
	'000	%	'000	%
1-49	4.4	3.0	4.3	2.8
50-99	16.4	11.2	13.6	8.9
100-149	27.6	18.8	23.6	15.5
150-199	24.9	17.0	29.0	19.0
200-249	22.4	15.3	22.3	14.6
250-299	13.7	9.3	14.6	9.6
300-349	9.3	6.3	11.1	7.3
350-399	7.3	5.0	7.8	5.1
400-499	7.0	4.8	9.6	6.3
500 and over	13.5	9.2	16.4	10.8
Total	146.6	100.0	152.4	100.0

¹ Excludes establishments with house cows and heifers only.

33

NUMBER OF SHEEP AND LAMBS BY STATISTICAL DIVISION, AT 31 MARCH 1995

Statistical division	Sheep ¹ (1 year and over)	Lambs and hoggets (under 1 year)	Total sheep and lambs	Percentage of total sheep flock
	'000	'000	'000	%
Adelaide and Outer Adelaide	1 361.6	311.0	1 672.6	12.6
Yorke and Lower North	1 215.7	373.7	1 589.4	12.0
Murray Lands	1 316.1	432.7	1 748.7	13.2
South East	2 697.9	802.2	3 500.1	26.4
Eyre	1 578.7	439.9	2 018.6	15.2
Northern	1 969.5	750.1	2 719.6	20.5
South Australia				
1995	10 139.5	3 109.6	13 249.1	100.0
1994	11 172.2	3 506.9	14 679.1	100.0

¹ Sheep 1 year and over include rams, ewes and wethers.

34

NUMBER OF ESTABLISHMENTS WITH SHEEP AND LAMBS BY STATISTICAL DIVISION, AT 31 MARCH 1995

Statistical division	Sheep ¹ (1 year and over)	Lambs and hoggets (under 1 year)	Total establishments with sheep and lambs
Adelaide and Outer Adelaide	1 387	1 005	1 449
Yorke and Lower North	1 658	1 327	1 716
Murray Lands	1 389	1 126	1 411
South East	1 792	1 464	1 851
Eyre	1 420	1 174	1 431
Northern	1 101	963	1 122
South Australia			
1995	8 747	7 059	8 980
1994	9 491	7 605	9 649

¹ Sheep 1 year and over include rams, ewes and wethers.

NUMBER OF ESTABLISHMENTS BY SIZE OF FLOCK AND NUMBER OF SHEEP AND LAMBS,
AT 31 MARCH 1994 AND 1995

Flock size	1994		1995	
	Establishments	Percentage of sheep and lamb establishments	Establishments	Percentage of sheep and lamb establishments
	no.	%	no.	%
1-499	2 583	26.8	2 593	28.9
500-999	2 325	24.1	2 225	24.8
1 000-1 499	1 645	17.0	1 442	16.1
1 500-1 999	981	10.2	860	9.6
2 000-2 499	640	6.6	516	5.7
2 500-2 999	352	3.6	343	3.8
3 000-3 999	482	5.0	427	4.8
4 000-4 999	228	2.4	193	2.1
5 000-5 999	132	1.4	113	1.3
6 000-6 999	82	0.8	71	0.8
7 000-7 999	42	0.4	45	0.5
8 000-8 999	31	0.3	34	0.4
9 000-9 999	23	0.2	18	0.2
10 000 and over	103	1.1	100	1.1
Total	9 649	100.0	8 980	100.0

Flock size	1994		1995	
	Sheep and lambs	Percentage of total sheep and lambs	Sheep and lambs	Percentage of total sheep and lambs
	'000	%	'000	%
1-499	627.8	4.3	610.5	4.6
500-999	1 708.2	11.6	1 630.9	12.3
1 000-1 499	2 014.7	13.7	1 738.4	13.1
1 500-1 999	1 690.2	11.5	1 470.8	11.1
2 000-2 499	1 419.0	9.7	1 140.3	8.6
2 500-2 999	960.2	6.5	932.7	7.0
3 000-3 999	1 650.5	11.2	1 457.0	11.0
4 000-4 999	1 015.2	6.9	854.7	6.5
5 000-5 999	711.1	4.8	611.3	4.6
6 000-6 999	528.7	3.6	451.5	3.4
7 000-7 999	311.1	2.1	329.4	2.5
8 000-8 999	280.8	1.8	284.2	2.1
9 000-9 999	219.8	1.5	168.9	1.3
10 000 and over	1 561.9	10.6	1 568.5	11.8
Total	14 679.1	100.0	13 249.1	100.0

36

LAMBING BY STATISTICAL DIVISION, YEAR ENDED 31 MARCH 1995

Statistical division	Ewes mated ¹ '000	Lambs marked '000	Lamb marking ratio ² %	Lambing expectations year ended 31 March 1996 ³		
				Joined to merino rams '000	Joined to other rams '000	Total '000
Adelaide and Outer Adelaide	716.7	539.1	75.2	402.3	309.1	711.3
Yorke and Lower North	744.2	553.1	74.3	507.9	235.0	742.9
Murray Lands	961.0	729.7	75.9	724.8	217.6	942.4
South East	1 679.4	1 402.5	83.5	740.1	918.7	1 658.7
Eyre	854.4	583.8	68.3	766.0	128.8	894.9
Northern	1 296.0	1 008.1	77.8	1 175.9	99.0	1 274.9
South Australia						
1995	6 251.6	4 816.2	77.0	4 317.0	1 908.1	6 225.1
1994	6 751.9	5 549.8	82.2	4 599.3	2 306.3	6 905.5

¹ Ewes mated to produce lambs marked in the season shown.

² Lambs marked as a proportion of ewes mated to produce lambs.

³ Forecast made at the end of the 1994-95 season.

37

PIG NUMBERS¹ AND NUMBER OF ESTABLISHMENTS BY STATISTICAL DIVISION, AT 31 MARCH 1995

Statistical division	Total establishments	Total pigs	Percentage of total pigs
	no.	'000	%
Adelaide and Outer Adelaide	143	127.9	30.2
Yorke and Lower North	350	75.3	17.8
Murray Lands	229	138.6	32.8
South East	61	31.5	7.4
Eyre	109	29.7	7.0
Northern	140	19.8	4.7
South Australia			
1995	1 032	422.9	100.0
1994	1 129	439.8	100.0

¹ Includes suckers, weaners, growers etc.

Herd size	1994		1995	
	Establishments	Percentage of pig establishments	Establishments	Percentage of pig establishments
	no.	%	no.	%
1-9	80	7.1	104	10.1
10-19	102	9.0	70	6.8
20-29	54	4.8	65	6.3
30-39	62	5.5	53	5.1
40-49	45	4.0	37	3.6
50-69	90	8.0	75	7.3
70-99	93	8.2	78	7.6
100-149	112	9.9	90	8.7
150-199	66	5.8	66	6.4
200-299	115	10.2	113	10.9
300-499	130	11.5	102	9.9
500-699	62	5.5	53	5.1
700-999	46	4.1	49	4.7
1 000 and over	72	6.4	77	7.5
Total	1 129	100.0	1 032	100.0

Herd size	1994		1995	
	Pigs	Percentage of total pigs	Pigs	Percentage of total pigs
	no.	%	no.	%
1-9	389	0.1	506	0.1
10-19	1 439	0.3	908	0.2
20-29	1 269	0.3	1 537	0.4
30-39	2 095	0.5	1 733	0.4
40-49	1 976	0.4	1 596	0.4
50-69	5 216	1.2	4 303	1.0
70-99	7 735	1.8	6 464	1.5
100-149	13 609	3.1	10 720	2.5
150-199	11 679	2.7	11 207	2.7
200-299	28 505	6.5	27 055	6.4
300-499	50 532	11.5	38 350	9.1
500-699	35 995	8.2	31 521	7.5
700-999	38 233	8.7	39 868	9.4
1 000 and over	241 151	54.8	247 135	58.4
Total	439 823	100.0	422 903	100.0

¹ Includes suckers, weaners, growers etc.

39

POULTRY NUMBERS BY STATISTICAL DIVISION, AT 31 MARCH 1995

Statistical division	Chickens	
	For egg production	For meat production
	'000	'000
Adelaide and Outer Adelaide	331.2	3 126.9
Yorke and Lower North	46.6	591.0
Murray Lands	245.8	583.1
South East	27.5	0.4
Eyre	2.2	0.5
Northern	48.3	—
South Australia		
1995	701.6	4 301.9
1994	666.8	4 559.4

40

NUMBER OF ESTABLISHMENTS WITH, AND NUMBER OF DEER AND HORSES BY STATISTICAL DIVISION, AT 31 MARCH 1995

Statistical division	Establishments		Livestock	
	Deer	Horses for breeding ¹	Deer	Horses for breeding ¹
	Adelaide and Outer Adelaide	43	175	5 628
Yorke and Lower North	22	54	1 429	464
Murray Lands	9	36	940	427
South East	63	72	8 177	448
Eyre	10	21	2 746	124
Northern	4	38	54	217
South Australia				
1995	151	396	18 974	3 723
1994	153	408	17 405	5 727

¹ Comprises horses on establishments with agricultural activity.

41

LIVESTOCK SLAUGHTERINGS AND LIVESTOCK PRODUCTS, YEARS ENDED 30 JUNE 1993 TO 1995

	Units	1993	1994	1995
Number of livestock slaughtered ^{1, 2}				
Cattle	'000	408.3	400.3	424.3
Calves	'000	9.2	8.8	12.0
Sheep	'000	2 769.7	3 078.3	3 114.4
Lambs	'000	2 062.3	2 363.8	1 914.8
Pigs	'000	568.2	562.1	469.6
Chickens	'000	25 396.6	28 376.4	28 778.9
Meat produced ^{1, 3}				
Beef	tonnes	96 338	94 395	99 108
Veal	tonnes	320	302	433
Mutton	tonnes	65 689	71 354	66 759
Lamb	tonnes	39 334	45 199	36 147
Pigmeat	tonnes	38 153	38 394	32 063
Chicken	tonnes	38 619	40 671	39 032
Whole milk intake by factories ⁴				
	million litres	436	456	484
Wool ⁵				
Brokers and dealer receivals of taxable wool	tonnes	109 322	102 340	86 977
Eggs produced ⁶	'000 dozen	14 052.8	12 705.3	13 136.6
Honey produced	'000 kg	3 643.9	4 095.8	2 266 .8

¹ Source: *Livestock Products, Australia* (7215.0).

² Includes estimates of animals slaughtered on farms and country butchers.

³ Dressed carcass weight, excluding offal.

⁴ Source: Australian Dairy Corporation.

⁵ Source: ABS Wool Brokers and Dealers Collection.

⁶ Collected at 31 March.

42

GROSS VALUE OF LIVESTOCK PRODUCTS AND OTHER DISPOSALS, YEARS ENDED 31 MARCH 1993 TO 1995p

	1993	1994	1995p
	\$m	\$m	\$m
Livestock slaughterings			
Cattle and calves	154.4	174.9	185.7
Sheep and lambs	110.0	120.1	136.1
Pigs	68.9	69.6	51.7
Poultry	54.3	67.2	74.3
Other	1.1	2.6	3.4
Total	388.8	434.4	451.2
Wool			
Shorn and crutched	314.8	258.1	325.6
Other	5.1	13.6	15.2
Total	319.9	271.8	340.8
Production of milk			
Manufacturing	58.9	63.5	66.6
Human consumption	66.9	68.9	78.0
Total	125.8	132.5	144.6
Eggs	19.7	14.9	16.7
Honey and beeswax	5.4	5.8	4.0

	Units	1994	1995
Apiarists	no.	147	120
Beehives			
Productive ¹	no.	54 121	42 892
Unproductive	no.	8 558	8 284
Total	no.	62 677	51 176
Honey produced			
Quantity	kg	4 095 755.0	2 266 779.0
Average production ²	kg/hive	75.7	52.8
Beeswax produced	kg	82 326.0	45 879.0

¹ Beehives from which honey was taken.

² Average production per productive beehive.

FARM FINANCES

44

SELECTED FINANCIAL STATISTICS, FARM BUSINESSES BY INDUSTRY, AGGREGATES, 1992-93 TO 1993-94

Items	Poultry 0141-0142				Fruit 0114-0119			
	1992-93		1993-94		1992-93		1993-94	
	\$m	%	\$m	%	\$m	%	\$m	%
Sales from crops	0.6	67	0.5	98	189.2	12	204.8	21
Sales from livestock	0.1	32	0.4	44	0.9	32	1.0	78
Sales from livestock products	6.9	54	17.8	37	6.2	63	1.3	*
Turnover	20.1	26	28.5	42	218.0	12	222.9	20
Purchases and selected expenses	10.7	49	20.9	40	93.1	10	93.0	20
Value added ¹	9.4	12	7.8	83	126.4	16	129.5	24
Adjusted value added ¹	8.2	14	6.4	94	108.9	17	117.1	27
Gross operating surplus ²	5.4	25	4.0	*	59.2	18	84.5	37
Interest paid	2.1	28	1.0	65	13.6	16	11.7	34
Cash operating surplus ²	3.3	35	2.8	*	49.0	22	84.3	35
Gross indebtedness	21.1	19	13.6	53	144.8	17	189.5	52
Total net capital expenditure	5.0	42	0.8	33	28.3	23	25.7	35

Items	Vegetables 0113				Grain 0121			
	1992-93		1993-94		1992-93		1993-94	
	\$m	%	\$m	%	\$m	%	\$m	%
Sales from crops	97.4	18	115.2	30	386.0	9	503.5	10
Sales from livestock	7.1	30	3.3	79	45.0	22	70.0	22
Sales from livestock products	4.5	56	1.8	71	46.4	17	49.4	15
Turnover	114.7	16	129.5	30	506.9	9	662.0	9
Purchases and selected expenses	59.2	17	70.0	27	302.5	9	393.9	10
Value added ¹	58.7	18	58.2	36	216.0	9	243.9	14
Adjusted value added ¹	51.1	19	51.2	37	183.0	10	201.3	15
Gross operating surplus ²	39.6	20	35.4	41	163.2	12	183.2	17
Interest paid	14.8	27	6.2	57	35.6	19	32.3	17
Cash operating surplus ²	26.7	25	30.2	38	123.3	14	180.8	19
Gross indebtedness	115.4	27	58.7	49	340.9	17	442.6	16
Total net capital expenditure	11.0	30	8.4	45	52.4	15	47.0	50

Items	Grain-sheep-beef 0122				Sheep-beef cattle 0123			
	1992-93		1993-94		1992-93		1993-94	
	\$m	%	\$m	%	\$m	%	\$m	%
Sales from crops	207.2	12	142.0	24	2.7	79	1.7	53
Sales from livestock	48.0	17	44.9	30	87.8	14	142.9	16
Sales from livestock products	79.8	12	56.3	21	44.4	15	41.2	15
Turnover	370.7	12	253.6	22	138.9	13	188.0	13
Purchases and selected expenses	197.8	11	156.3	22	83.1	15	102.4	14
Value added ¹	202.1	13	75.4	33	75.4	17	85.6	13
Adjusted value added ¹	174.1	13	53.8	43	64.1	18	73.2	14
Gross operating surplus ²	154.7	14	33.7	71	52.5	20	55.6	14
Interest paid	27.3	22	11.7	39	11.6	34	12.8	35
Cash operating surplus ²	103.6	16	44.2	47	19.4	46	49.5	16
Gross indebtedness	287.1	20	139.7	31	115.0	32	192.2	47
Total net capital expenditure	44.5	22	22.0	32	4.5	29	7.9	38

¹ Includes an estimate for the value of the increase in livestock.

² Excludes an estimate for the value of the increase in livestock.

NOTE: Standard error of change between two successive years is 1.3 times the standard error of the estimate (except for the all industries estimate where it is equal to the standard error of the estimate). Standard error of change between estimates two years apart could be as high as 1.8 times the standard error of the estimate (except for the All industries estimate where it would be 1.5 times the standard error of the estimate). (Refer to the Explanatory Notes.)

Items	Sheep 0124				Beef cattle 0125			
	1992-93		1993-94		1992-93		1993-94	
	\$m	SE	\$m	SE	\$m	SE	\$m	SE
Sales from crops	11.9	55	9.1	58	1.5	58	0.2	76
Sales from livestock	49.1	26	36.3	29	96.4	24	78.3	22
Sales from livestock products	84.7	13	89.5	18	3.7	47	0.6	59
Turnover	150.8	15	141.1	15	111.2	22	82.2	22
Purchases and selected expenses	88.4	17	81.6	19	73.8	39	46.9	23
Value added ¹	84.5	16	32.9	24	45.5	14	55.7	21
Adjusted value added ¹	68.0	19	18.7	40	39.1	15	50.5	21
Gross operating surplus ¹	48.1	26	1.6	**	29.4	28	43.7	23
Interest paid	12.9	21	9.6	37	9.2	55	6.2	37
Cash operating surplus ²	20.1	47	19.0	36	17.6	68	19.5	45
Gross indebtedness	146.3	20	135.9	43	75.0	50	108.5	54
Total net capital expenditure	9.8	33	7.4	61	4.1	32	4.5	41

Items	Dairy cattle 0130				Pigs 0151			
	1992-93		1993-94		1992-93		1993-94	
	\$m	SE	\$m	SE	\$m	SE	\$m	SE
Sales from crops	0.9	84	4.3	*	2.8	28	11.5	56
Sales from livestock	15.0	18	12.0	43	38.8	15	60.9	27
Sales from livestock products	119.2	9	144.7	14	0.2	61	2.1	64
Turnover	138.5	9	178.0	17	42.7	14	76.2	29
Purchases and selected expenses	73.8	10	93.3	18	29.6	15	53.3	30
Value added ¹	71.1	13	91.0	19	13.5	17	22.7	25
Adjusted value added ¹	63.6	15	82.0	19	11.6	18	18.8	25
Gross operating surplus ¹	54.8	18	68.9	18	8.0	24	12.9	28
Interest paid	10.6	17	16.2	16	2.2	22	2.9	39
Cash operating surplus ²	37.6	18	46.3	28	5.6	22	10.6	43
Gross indebtedness	135.3	31	180.9	14	24.1	19	51.3	33
Total net capital expenditure	11.3	25	23.6	32	2.6	38	7.6	35

¹ Includes an estimate for the value of the increase in livestock.

² Excludes an estimate for the value of the increase in livestock.

NOTE: Standard error of change between two successive years is 1.3 times the standard error of the estimate (except for the all industries estimate where it is equal to the standard error of the estimate). Standard error of change between estimates two years apart could be as high as 1.8 times the standard error of the estimate (except for the All industries estimate where it would be 1.5 times the standard error of the estimate). (Refer to the Explanatory Notes.)

Items	Other agriculture 0111-0112, 0152-0159, 0169				Agriculture all industries			
	1992-93		1993-94		1992-93		1993-94	
	\$m	%	\$m	%	\$m	%	\$m	%
Sales from crops	71.2	32	64.0	52	971.4	5	1 056.8	7
Sales from livestock	7.7	43	7.7	52	395.9	7	457.7	8
Sales from livestock products	7.7	36	0.7	23	403.6	4	405.5	7
Turnover	98.3	27	85.2	38	1 910.7	3	2 047.2	4
Purchases and selected expenses	42.5	29	27.5	31	1 054.5	4	1 138.9	4
Value added ¹	60.2	28	59.0	42	962.7	4	861.6	7
Adjusted value added ¹	51.1	29	52.5	44	822.6	4	725.7	8
Gross operating surplus ¹	28.8	38	20.3	32	643.8	5	543.8	10
Interest paid	7.3	43	6.2	40	147.3	8	116.9	9
Cash operating surplus ²	19.5	49	7.1	33	425.8	7	494.1	10
Gross indebtedness	81.0	38	78.8	38	1 486.0	7	1 591.8	11
Total net capital expenditure	3.7	*	1.7	54	177.2	8	156.6	17

¹ Includes an estimate for the value of the increase in livestock.

² Excludes an estimate for the value of the increase in livestock.

NOTE: Standard error of change between two successive years is 1.3 times the standard error of the estimate (except for the all industries estimate where it is equal to the standard error of the estimate). Standard error of change between estimates two years apart could be as high as 1.8 times the standard error of the estimate (except for the All industries estimate where it would be 1.5 times the standard error of the estimate). (Refer to the Explanatory Notes.)

Items	Aggregates					
	1989-90		1990-91		1991-92	
	\$m	%	\$m	%	\$m	%
Sales from crops	1 055.9	5	808.2	5	1 010.5	4
Sales from livestock	363.5	6	289.0	10	376.5	8
Sales from livestock products	672.4	5	480.1	5	410.3	4
Turnover	2 233.8	3	1 689.9	3	1 920.7	3
Purchases and selected expenses	1 054.4	4	972.0	3	1 082.6	3
Value added ¹	1 109.7	4	599.8	7	903.7	4
Adjusted value added ²	983.1	4	474.8	8	770.1	5
Gross operating surplus ¹	814.4	5	316.9	13	641.2	6
Interest paid	217.4	12	200.3	12	156.1	7
Cash operating surplus ²	743.0	7	289.6	18	460.0	7
Gross indebtedness	1 328.6	12	1 392.3	10	1 342.6	7
Total net capital expenditure	239.2	13	108.9	13	172.9	11

Items	Aggregates					
	1992-93		1993-94		1994-95p	
	\$m	%	\$m	%	\$m	%
Sales from crops	971.4	5	1 056.8	7	1 061.9	7
Sales from livestock	395.9	7	457.7	8	518.0	9
Sales from livestock products	403.6	4	405.5	7	483.9	6
Turnover	1 910.7	3	2 047.2	4	2 212.8	5
Purchases and selected expenses	1 054.5	4	1 138.9	4	1 214.1	5
Value added ¹	962.7	4	861.6	7	n.y.a.	n.y.a.
Adjusted value added ¹	822.6	4	725.7	8	n.y.a.	n.y.a.
Gross operating surplus ¹	643.8	5	543.8	10	n.y.a.	n.y.a.
Interest paid	147.3	8	116.9	9	n.y.a.	n.y.a.
Cash operating surplus ²	425.8	7	494.1	10	556.9	10
Gross indebtedness	1 486.0	7	1 591.8	11	n.y.a.	n.y.a.
Total net capital expenditure	177.2	8	156.6	17	n.y.a.	n.y.a.

Items	Averages					
	1989-90	1990-91	1991-92	1992-93	1993-94	1994-95p
	\$'000	\$'000	\$'000	\$'000	\$'000	\$'000
Sales from crops	80.7	63.7	79.3	78.2	87.2	n.y.a.
Sales from livestock	27.8	22.9	29.5	31.9	37.8	n.y.a.
Sales from livestock products	51.4	37.9	32.2	32.5	33.5	n.y.a.
Turnover	170.8	133.2	150.6	153.9	168.2	n.y.a.
Purchases and selected expenses	80.6	76.6	84.9	84.9	94.0	n.y.a.
Value added ¹	84.8	47.3	70.9	77.5	71.1	n.y.a.
Adjusted value added ¹	75.1	37.4	60.4	66.2	59.9	n.y.a.
Gross operating surplus ¹	62.3	25.0	50.3	51.8	44.9	n.y.a.
Interest paid	16.6	15.8	12.2	11.7	9.7	n.y.a.
Cash operating surplus ²	56.8	22.8	36.1	34.3	40.8	n.y.a.
Gross indebtedness	101.6	109.8	105.3	119.7	131.3	n.y.a.
Total net capital expenditure	18.3	8.6	13.6	14.3	12.9	n.y.a.

¹ Includes an estimate for the value of the increase in livestock.

² Excludes an estimate for the value of the increase in livestock.

NOTE: Standard error of change between two successive years is 1.3 times the standard error of the estimate (except for the all industries estimate where it is equal to the standard error of the estimate). Standard error of change between estimates two years apart could be as high as 1.8 times the standard error of the estimate (except for the all industries estimate where it could be 1.5 times the standard error of the estimate). (Refer to the Explanatory Notes.)

EXPLANATORY NOTES

INTRODUCTION

1 This publication contains statistics on crops, livestock and livestock products and characteristics of farms and includes some summary information on the financial performance of agricultural industries and the value of agricultural commodities produced.

SCOPE AND COVERAGE

2 The statistics on crops (including horticulture), livestock numbers, structure of agricultural industries, land management and farm inputs are derived from the annual agricultural census conducted throughout Australia at 31 March, which collects data from establishments with agricultural activity.

3 Establishments which make only a small contribution to overall agricultural production are excluded from the scope of the census. Information is collected from establishments when their EVAO is above a certain level. These levels have varied in past agricultural censuses, as follows:

- | | |
|----------------------|-----------------------------|
| ■ 1993-94 to present | EVAO \$5,000 and over; |
| ■ 1991-92 to 1992-93 | EVAO \$22,500 and over; |
| ■ 1986-87 to 1990-91 | EVAO \$20,000 and over; and |
| ■ before 1986-87 | EVAO \$2,500 and over. |

4 Table 1 shows the number of agricultural establishments having an EVAO of \$5,000 and over according to the population frame selected for the agricultural census. Once data on these units are collected and processed a small number of them are found to have an EVAO of less than \$5,000. These are shown in the first column in table 5. Some units are found to have an EVAO of zero; these are shown as unclassified in tables 1, 2, 5 and 6.

5 The effect of the lower EVAO cut off of \$5,000 and over from 1993-94 onwards is to include smaller agricultural establishments that have been excluded in previous years. However, because of their small size they are not expected to change greatly the overall commodity totals. Nevertheless, the changes in scope between years means that care must be taken in comparing census results over time.

6 Information covering commodities such as livestock slaughterings, dairy produce and beekeeping is obtained from separate ABS collections and from organisations such as the Australian Dairy Corporation.

REFERENCE PERIOD

7 Statistics about crops, pastures, vegetables and fruit relate, in general, to the season ended 31 March. Where harvesting was not completed by 31 March 1995 (for example, maize, rice, apples, grapes and late planted potatoes), the production statistics relate to the completed harvest.

ESTABLISHMENTS WITH AGRICULTURAL ACTIVITY

8 An establishment with agricultural activity is a single physical location which is used for the production of crops (including fruit and vegetables) and/or for the raising of livestock and the production of livestock products.

INDUSTRY AND SIZE CLASSIFICATION

9 Establishments in the Agricultural Sector were classified in accordance with the methodology described in the 1993 *Australian and New Zealand Standard Industrial Classification (ANZSIC)* (1292.0).

10 The process of determining the industry class for ANZSIC is the step by step method of classification described in chapter 4 of the *Australian Standard Industrial Classification* (1201.0). This method requires that the

Division code of the unit be determined first. The Subdivision code within the major Division of the unit is then determined, followed by the Group code and finally the Class code of the unit.

11 The Group and Class codes of agricultural units are determined annually by valuing physical crop and livestock information collected in the agricultural census. The valuation procedure allows for the industry classification of individual units to be changed to reflect significant or long term changes in their activities.

12 However, the procedure provides for a dampening or resistance effect to offset instability in allocation to particular classes of the classification which would arise from short-term factors such as floods and drought. To obviate such effects, the valuation procedure takes into account (without double counting) the area of crops sown and numbers of livestock on holdings at a point in time as well as the crops produced and livestock turnoff during the year. The resultant aggregation of these commodity values is termed the estimated value of agricultural operations (EVAO). It should be noted that EVAO is applicable only for industry coding and size valuation purposes. It is not an indicator of receipts obtained by units or of the value of agricultural commodities produced by these units.

DEFINITIONS OF TERMS USED

13 The following are definitions of terms used in the tables of this publication:

- *agricultural establishment* is an establishment which is engaged *mainly* in agricultural activities; and
- *establishment with agricultural activity* is a land-based establishment which is engaged in agricultural activity, regardless of the unit's predominant activity.

CROPS, PASTURES AND HORTICULTURE

14 Statistics of areas and production of crops relate, in the main, to crops sown during the year ended 31 March. Statistics of perennial crops relate to the position as at 31 March and the production during the year ended on that date, or of fruit set by that date. For example, particulars of area, production and yield per hectare of wheat in Australia refer to wheat sown during the period from April to September and harvested between October and the following February, i.e. the 1994-95 season relates to the harvesting period October 1994 to February 1995. Statistics of other crops which in some States are harvested after 31 March 1995 (e.g. maize, potatoes, apples and pears) are collected by supplementary census returns and are included in this publication.

LIVESTOCK SLAUGHTERING AND LIVESTOCK PRODUCTS

15 The statistics on slaughtering and meat production are based on a monthly collection from abattoirs and other major slaughtering establishments and include estimates of animals slaughtered on farms and by country butchers and other small slaughtering establishments. Care should be taken when using this information as the figures only relate to slaughtering for human consumption and do not include animals condemned or those killed for boiling down. Also, definitions of livestock categories may differ between States and within States, particularly with regard to calves. More detailed information is published monthly in *Livestock Products, Australia* (7215.0).

WOOL

16 Wool receivals statistics show the amount of taxable wool received by brokers and dealers from wool producers. It excludes wool received by brokers on which wool tax has already been paid by other dealers (private

buyers) or brokers. The information shown is on the basis of the State in which the wool has actually been received and does not necessarily reflect the production of wool in that State. This data is published monthly in *Livestock Products, Australia* (7215.0).

17 The wool estimates contained in table 41 are obtained from these major sources:

- a monthly collection of National Council of Wool Selling Brokers of Australia in each State and incorporated in this publication with reference to the 12 months to 30 June. The data are compiled in terms of bales received into stores and converted to wool receivals in tonnes; and

- a monthly ABS collection of other wool brokers and dealers in each State, also incorporated with reference to the 12 months to 30 June. Data are reported in tonnes, or converted to tonnes as required.

MILK

18 These statistics have been collected by the Australian Dairy Corporation. More detailed information is published monthly in *Livestock Products, Australia*, (7215.0).

POULTRY

19 Poultry slaughtering statistics have been compiled from returns supplied by commercial poultry slaughtering establishments.

BEEKEEPING

20 Beekeepers are included in this collection if they have a minimum EVAO of \$5,000, whether for beekeeping alone or in conjunction with other agricultural activities.

AGRICULTURAL FINANCE SURVEY

21 The financial estimates in this publication have been derived from estimates from the Agricultural Finance Survey (AFS). The survey aims to meet demands of users who require annual financial statistics on a consistent basis across all agricultural industries in each State and Australia.

22 More detailed information including an outline of the reliability of the estimates and the standard error is published in *Agricultural Industries Financial Statistics, Australia* (7507.0).

SCOPE AND COVERAGE OF THE AFS

23 The population of the AFS consisted of all economic units (management units) the principal activity of which resulted in them being classified within Sub-division 01 'Agriculture' of the ANZSIC and which had an EVAO of \$22,500 or more.

VALUE OF AGRICULTURAL COMMODITIES PRODUCED

24 This publication contains summary information on the value of agricultural commodities produced (VACP) compiled annually for all States and Australia. The summary information contains gross values of production for selected agricultural commodities. More detailed information is available in *Value of Agricultural Commodities Produced* (7503.0).

SCOPE AND COVERAGE OF VACP STATISTICS

25 The statistics are derived by multiplying quantity data by price (or unit value) data. The quantity data are collected in the agricultural censuses and other ABS collections with some information from external sources. All price information is obtained from non-ABS sources.

PRICE AND MARKETING COSTS DATA

26 The method of collection of relevant prices for, and the costs of marketing of agricultural commodities varies considerably between States and between commodities. Where a statutory authority handles marketing of the whole or portion of a product (e.g. Australian Wheat Board, Australian Barley Board) data are usually obtained from this source.

Information is also obtained from marketing reports, wholesalers, brokers and auctioneers. For all commodities, values are in respect of production during the year (or season) irrespective of whether or when payments are made. For that portion of production not marketed (e.g. hay grown on farm for own use, milk used in farm household, etc.) estimates are made from the best available information and, in general, are valued on a local value basis.

DEFINITION OF GROSS VALUE

27 Gross value of commodities produced is the value placed on recorded production at the wholesale prices realised in the market place.

OTHER FORMS OF RELEASE

28 The ABS also has more detailed agricultural statistics on magnetic tape, microfiche and floppy disk. AgStats on floppy disk offers a wider range of data aggregated at smaller geographic areas than those generally available in printed publications, together with an easy-to-use interrogation facility.

29 Current publications produced by the ABS are listed in the *Catalogue of Publications and Products, Australia* (1101.0). The ABS also issues, on Tuesdays and Fridays, a *Release Advice* (1105.0) which lists publications to be released in the next few days. The Catalogue and Release Advice are available from any ABS office.

UNPUBLISHED STATISTICS

30 As well as the statistics in this and related publications, the ABS may have other unpublished data available. Inquires should be directed to Mr Frank McCallum on (002) 20 5939.

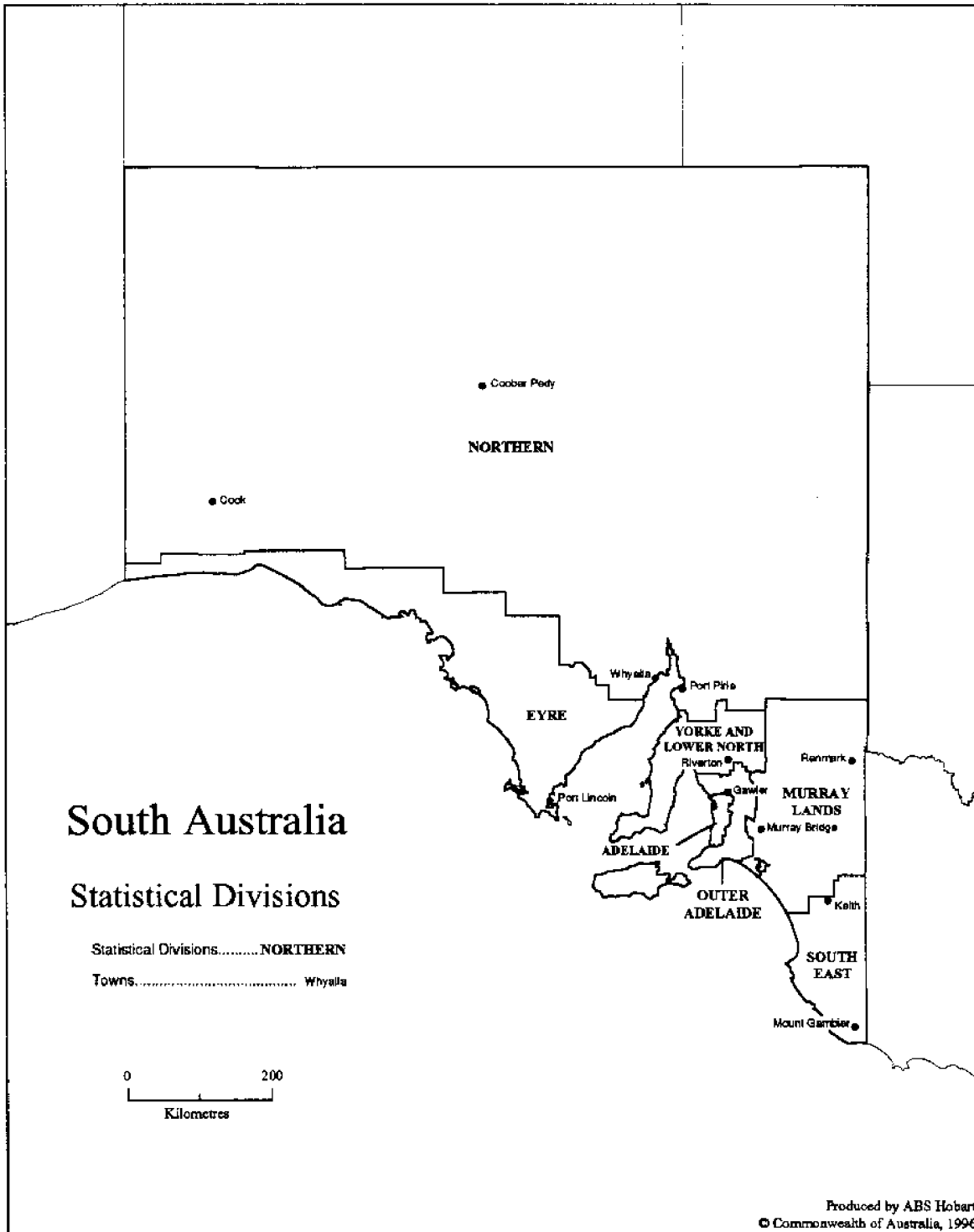
31 Symbols and other usages:

—	nil or rounded to zero
ha	hectares
t	tonnes
n.a.	not available
n.y.a.	not yet available
n.p.	not published
p	preliminary
r	revised
SE%	percentage standard error
*	SE% greater than 100. Estimate included for completeness. Sampling variability too high for most practical purposes.
**	Where an estimate is small compared to previous years, the relative standard error may be a misleading indicator of the reliability of the estimate.

32 The figures shown in this publication have been revised where necessary and as a consequence may not agree with similar data shown in previous publications.

33 Where the figures have been rounded, discrepancies may occur between sums of the component items and totals.

STATISTICAL DIVISIONS OF SOUTH AUSTRALIA



Other ABS Data on Agricultural Activity

Agriculture Census data not included in ABS publications are also available—

AGSTATS

- Contains data for each commodity collected in the census
- Provides data down to Statistical Local Area level
- Available on microfiche, magnetic tape, floppy disc and CD-ROM
- Available for each year separately from 1976-77 to 1993-94 (except CD-ROM)
- Data available on CD-ROM for seasons 1985-86 to 1992-93
- CD-ROM package includes SUPERMAP software which can produce colour maps showing distribution of particular commodities

UNPUBLISHED DATA

The ABS can also make available information which is not published. Where it is not practicable to provide the required information by telephone, data can be provided as hardcopy, computer printout or on disk.

For more details please contact Mr Frank McCallum on (002) 20 5939

Other ABS Publications on Agricultural Activity

The ABS also publishes bulletins concerning the agricultural sector compiled from other sources—

Agricultural Industries, Financial Statistics, Australia, 1994-95 *Cat. no. 7507.0 (\$19.00)*

- Estimates of turnover, expenditure, cash operating surplus, capital expenditure and indebtedness of agricultural enterprises in each State (classified by industry for Australia)
- Value of selected assets and net worth of agricultural enterprises are also classified by industry

Agricultural Industries, Financial Statistics, Australia, Preliminary, 1994-95

Cat. no. 7506.0 (\$13.00)

- Estimates of the financial performance of enterprises engaged in agricultural activities

Livestock Products, Australia, *Cat. no. 7215.0 (\$13.00)*

- Published monthly
- Livestock: cattle, sheep, pigs and poultry
- Data: numbers slaughtered, meat production, stocks and exports, milk intake and sales, wool receivals
- Historical data

You can order these publications from the ABS Bookshop on (08) 237 7582

For more information . . .

The ABS publishes a wide range of statistics and other information on Australia's economic and social conditions. Details of what is available in various publications and other products can be found in the ABS Catalogue of Publications and Products available from all ABS Offices.

ABS Products and Services

Many standard products are available from ABS bookshops located in each State and Territory. In addition to these products, information tailored to the needs of clients can be obtained on a wide range of media by contacting your nearest ABS Office. The ABS also provides a Subscription Service for standard products and some tailored information services.

National Dial-a-Statistic Line

0055 86 400

Steadycom P/L: premium rate 25c/21.4 secs.

This number gives 24-hour access, 365 days a year, for a range of important economic statistics including the CPI.

Internet

<http://www.statistics.gov.au>

A wide range of ABS information is available via the Internet, with basic statistics available for each State, Territory and Australia. We also have Key National Indicators, ABS product release details and other information of general interest.

Sales and Inquiries

Keylink STAT.INFO/ABS
X.400 (C:Australia,PUB:Telememo,O:ABS, FN:STAT,SN:INFO)
Internet stat.info@abs.telememo.au

National Mail Order Service (06) 252 5249
Subscription Service 1800 02 0608

	Information Inquiries	Bookshop Sales
SYDNEY	(02) 268 4611	268 4620
MELBOURNE	(03) 9615 7755	9615 7755
BRISBANE	(07) 3222 6351	3222 6350
PERTH	(09) 360 5140	360 5307
ADELAIDE	(08) 237 7100	237 7582
HOBART	(002) 205 800	205 800
CANBERRA	(06) 252 6627	207 0326
DARWIN	(089) 432 111	432 111



Client Services, ABS, PO Box 10, Belconnen ACT 2616

