

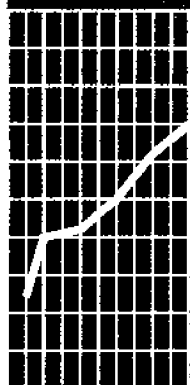


1995-96

EMBARGO: 11:30 AM (CANBERRA TIME) THURS 31 JULY 1997

# Agriculture

## Queensland



## NOTES

### SYMBOLS AND OTHER USAGES

evao	estimated value of agricultural operations
ha	hectares
kg	kilograms
km	kilometres
n.a.	not available
n.c.	not collected
n.e.c.	not elsewhere classified
n.p.	not published
n.y.a.	not yet available
p	preliminary
r	figure or series revised since previous issue
SE%	percentage standard error
t	tonnes
*	SE% greater than 100. Estimate included for completeness. Sampling variability too high for most practical purposes.
**	Where an estimate is small compared to previous years, the relative standard error may be a misleading indicator of the reliability of the estimate.
—	nil or rounded to zero

.....

### INQUIRIES

For further information about statistics in this publication and the availability of related unpublished statistics, contact Darren Sprott on Brisbane (07) 3222 6159 or any ABS State office.

For information about other ABS statistics and services, please refer to the back of this publication.

Brian Doyle  
Regional Director, Queensland

# CONTENTS

\*\*\*\*\*

	Page
<b>EDITORIAL</b>	
Summary of findings .....	6
<b>TABLES</b>	
<b>Structure of agricultural industry</b>	
1 Establishments by industry, EVAO \$5,000 and over, at 31 March .....	17
2 Establishments by industry, EVAO \$22,500 and over, at 31 March .....	18
3 Establishments with agricultural activity, Statistical Divisions, EVAO \$5,000 & over .....	19
4 Establishments with agricultural activity, Statistical Divisions, EVAO \$22,500 & over .....	19
5 Establishments by industry, by EVAO range, at 31 March 1996 .....	20
6 Establishments by industry, by area range, at 31 March 1996 .....	22
<b>Land management</b>	
7 Area and land use of establishments <u>w</u> ith agricultural activity, at 31 March 1996 .....	25
8 Crop stubble disposal, year ended 31 March 1996 .....	26
9 Cultivation of broadacre crops, year ended 31 March 1996 .....	26
10 Planting of trees, year ended 31 March 1996 .....	27
11 Fencing, year ended 31 March 1996 .....	28
12 Fertiliser usage, year ended 31 March 1996 .....	29
13 Soil conditioners, year ended 31 March 1996 .....	30
14 Maintenance and management of pastures, year ended 31 March 1996 .....	30
15 Irrigation area and scheduling method, year ended 31 March 1996 .....	31
<b>Crops and pastures</b>	
16 Cereals for grain, year ended 31 March 1996 .....	32
17 Legumes for grain, year ended 31 March 1996 .....	34
18 Crops and pastures for hay, year ended 31 March 1996 .....	35
19 Oilseeds, year ended 31 March 1996 .....	37
20 Other crops, year ended 31 March 1996 .....	38
21 Gross value of principal crops and pastures .....	39
22 Establishments by area of principal grains sown and production .....	40
23 Establishments growing cereals for grain, year ended 31 March 1996 .....	41
<b>Horticulture</b>	
24 Citrus and pome fruit, year ended 31 March 1996 .....	42
25 Stone fruit, year ended 31 March 1996 .....	44
26 Other fruit and nuts, year ended 31 March 1996 .....	46
27 Tropical and berry fruit, year ended 31 March 1996 .....	47
28 Gross value of citrus, pome and other fruit .....	49
29 Grapes, year ended 31 March 1996 .....	49
30 Vegetables for human consumption, years ended 31 March .....	50
31 Vegetables for human consumption, Statistical Divisions, year ended 31 March 1996 .....	52
32 Gross value of vegetables for human consumption .....	56
33 Area of nurseries, cut flowers and cultivated turf, year ended 31 March 1996 ..	57
34 Area of shade and glasshouses, year ended 31 March 1996 .....	57
35 Total purchase and sales value of plants, year ended 31 March 1996 .....	58

\*\*\*\*\*

## CONTENTS *continued*

Page

### Livestock and livestock products

36	Meat cattle numbers, at 31 March 1996 .....	59
37	Establishments with meat cattle, at 31 March 1996 .....	59
38	Number of establishments and meat cattle by herd size, at 31 March .....	60
39	Milk cattle numbers, at 31 March 1996 .....	61
40	Establishments with milk cattle, at 31 March 1996 .....	61
41	Number of establishments and milk cattle by herd size, at 31 March .....	62
42	Number of sheep and lambs, at 31 March 1996 .....	63
43	Establishments with sheep and lambs, at 31 March 1996 .....	63
44	Number of establishments and sheep and lambs by flock size, at 31 March ...	64
45	Lambing, year ended 31 March 1996 .....	65
46	Pig numbers and number of establishments, at 31 March 1996 .....	65
47	Number of establishments and pigs by herd size, at 31 March .....	66
48	Poultry, number on holding, at 31 March 1996 .....	67
49	Poultry, number disposed of, and egg production, year ended 31 March 1996 .	68
50	Establishments with and number of deer and horses, at 31 March 1996 .....	69
51	Sales of livestock, year ended 31 March 1996 .....	70
52	Livestock slaughterings and products, years ended 31 March .....	71
53	Gross value of livestock products and other disposals .....	72
54	Beekeeping, summary statistics, years ended 30 June .....	72

### Farm finances

55	Selected financial statistics, farm businesses, by industry, aggregates .....	73
56	Selected financial statistics, farm businesses, aggregates and averages .....	77

### INFORMATION

Explanatory notes .....	79
Map .....	84

# CONTENTS *continued*

Page

## GRAPHS

Grain sorghum, years ended 31 March .....	7
Wheat, years ended 31 March .....	8
Barley, years ended 31 March .....	8
Cotton production, years ended 31 March .....	9
Sugar cane, area and production, years ended 31 March .....	10
Avocado production, years ended 31 March .....	11
Banana production, years ended 31 March .....	12
Pineapple production, years ended 31 March .....	12
Tomato production, years ended 31 March .....	13
Meat cattle, at 31 March .....	14
Milk cattle, at 31 March .....	14
Sheep and lambs, at 31 March .....	15
Pigs, at 31 March .....	15

## SUMMARY OF FINDINGS

### INTRODUCTION

The 1995-96 season showed some improvement over the previous year. However, dry conditions continued in Queensland. Grain growing regions had better production totals than previous years, but were still not up to normal. The Darling Downs Statistical Division (SD) experienced a significant increase in production of wheat and a less favourable improvement in grain sorghum production. Prices for meat cattle weakened during the year; the sheep industry experienced a continued downward trend in wool prices. The bright side for the sheep industry was strong prices for fat lambs.

### STRUCTURE OF AGRICULTURAL INDUSTRY

The number of establishments with agricultural activity decreased 2.0% from 32,849 at 31 March 1995 to 32,186 at 31 March 1996. This total included 292 establishments classified to ANZSIC other than Sub-division 01 Agriculture, and 523 establishments which were not classified to any industry.

The main industries of agricultural establishments were:

	<i>Number</i>	<i>% of establishments with agricultural activity</i>
Beef cattle farming	11 751	36.5
Sugar cane growing	4 603	14.3

The number of establishments classified to beef cattle farming fell by 2.1% from 11,998 at 31 March 1995 to 11,751 at 31 March 1996. Over the same period, establishments classified to grain-sheep/beef cattle farming increased, from 1,494 to 1,900 (up 27.2%). Establishments classified to cotton growing increased from 419 to 508 (up 21.2%), and the number of establishments classified to sugar cane growing decreased by 1.1% from 4,653 to 4,603 (see table 1).

At 31 March 1996, only 6.8% of establishments with agricultural activity had an estimated value of agricultural operations (EVAO) of \$500,000 or more (see table 5).

At 31 March 1996, 55.7% of establishments classified to beef cattle had an EVAO of between \$5,000 and \$50,000. Beef cattle, sugar cane and cotton accounted for 56.1% of establishments with an EVAO of \$500,000 or more at 31 March 1996. Of the 508 establishments classified to the cotton industry, 66.5% had an EVAO of \$500,000 or more (see table 5).

In terms of area, 232 establishments had an area of 100,000 hectares or more at 31 March 1996; 194 were in the beef cattle farming industry (see table 6).

## SUMMARY OF FINDINGS *continued*

### LAND MANAGEMENT

At 31 March 1996, establishments with agricultural activity occupied 149.7 million hectares or 85.3% of Queensland's total area. Cereal crops covered 1,586,800 hectares, or 1.1% of the total area covered by establishments with agricultural activity. The area of cereal crops increased by 34.1% from 1994-95 reflecting slightly better conditions (see table 7).

The main method of handling crop stubble in 1995-96 (used on 762,100 hectares) was to plough it into the soil. The next most popular method was to mulch it, a method used on 289,100 hectares. There were 234,800 hectares of stubble removed by grazing, baling or fire harrowing, 126,600 hectares of stubble left intact (crops were sown by direct drilling), while 21,900 hectares of stubble were burnt (see table 8).

A total of 509,844 tree seedlings were planted during the 1995-96 season. Some 41.1% of tree seedlings planted for timber/pulp were planted in the Far North SD and a further 19.1% were planted in the Darling Downs SD (see table 10).

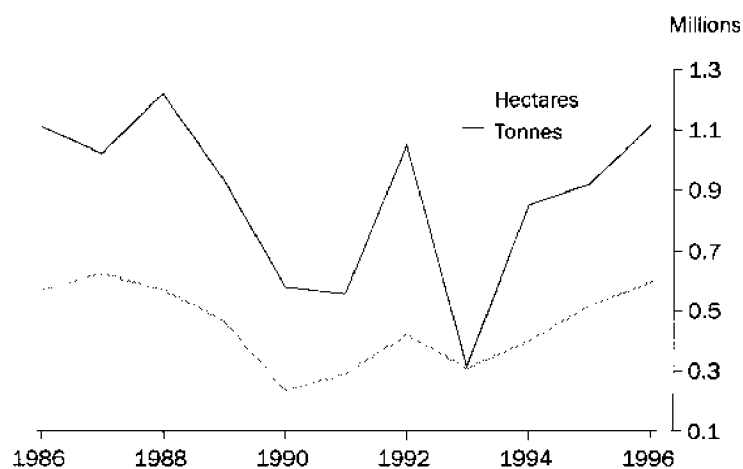
### CROPS AND PASTURES

#### GRAIN SORGHUM

During the year ended 31 March 1996, the area sown to grain sorghum increased to 596,800 hectares (up 14.8%). Production of grain sorghum increased to 1,115,600 tonnes in the year ended 31 March 1996 (up 21.7%), while yield changed little, up from 1.8 to 1.9 tonnes per hectare. Grain sorghum was sown in all SDs except the North West SD. The major contributor in terms of production was the Darling Downs SD which accounted for 65.8% of the State's production (see table 16).

During the year ended 31 March 1996, 7.2% of establishments growing grain sorghum had an area sown of 500 hectares or more. These large establishments accounted for 42.5% of the State's area planted to grain sorghum and 29.8% of the State's production (see table 22).

GRAIN SORGHUM, YEARS ENDED 31 MARCH



## SUMMARY OF FINDINGS *continued*

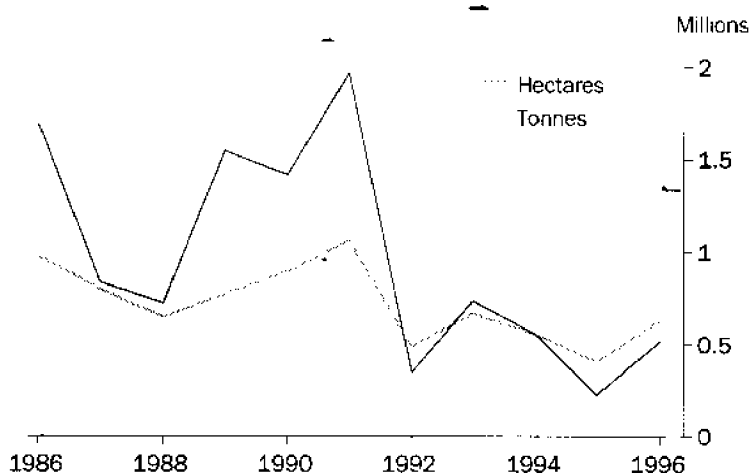
### WHEAT

The number of establishments growing wheat increased from 1,706 to 2,677 in the year ended 31 March 1996 (up 56.9%). The production of wheat also increased, to 519,500 tonnes (up 130.8%). The increases in production, area sown and the number of establishments reporting wheat were primarily attributed to the easing of drought conditions in Queensland (see tables 16 and 23). Area sown to wheat was 626,500 hectares.

Wheat was primarily grown in the Darling Downs SD. This SD accounted for 62.4% of total area sown, and 73.2% of total production (see table 16).

In the year ended 31 March 1996, 12.1% of establishments growing wheat had an area sown of 500 hectares or more. These large establishments accounted for 53.3% of the State's area of wheat sown and 45.2% of the State's production (see table 22).

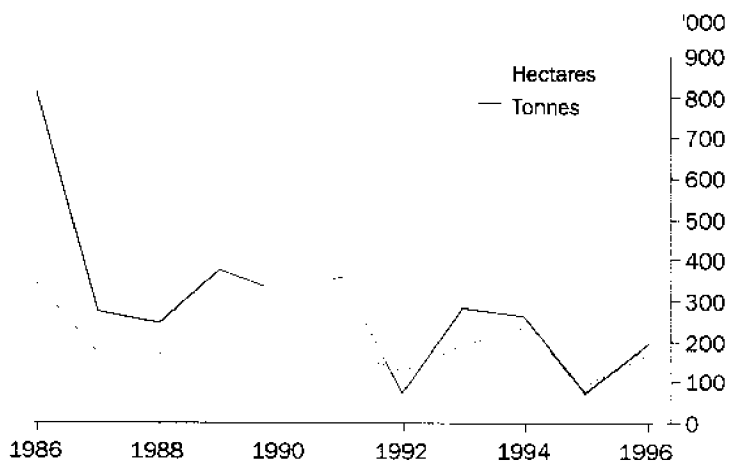
#### WHEAT, YEARS ENDED 31 MARCH



### BARLEY

The area sown to barley increased by 79.5% to 167,800 hectares in the year ended 31 March 1996. Production during the same period increased by 167.9% to 195,000 tonnes, while the yield increased from 0.8 tonnes to 1.2 tonnes per hectare. Barley was primarily grown in the Darling Downs SD which had 85.8% of area sown and 89.5% of production (see table 16).

#### BARLEY, YEARS ENDED 31 MARCH





## SUMMARY OF FINDINGS *continued*

### PASTURES FOR HAY

The area of pastures cut for hay (lucerne and other pastures) decreased by 24.6% to 57,000 hectares in the year ended 31 March 1996. Production also decreased, by 11.6% to 308,400 tonnes.

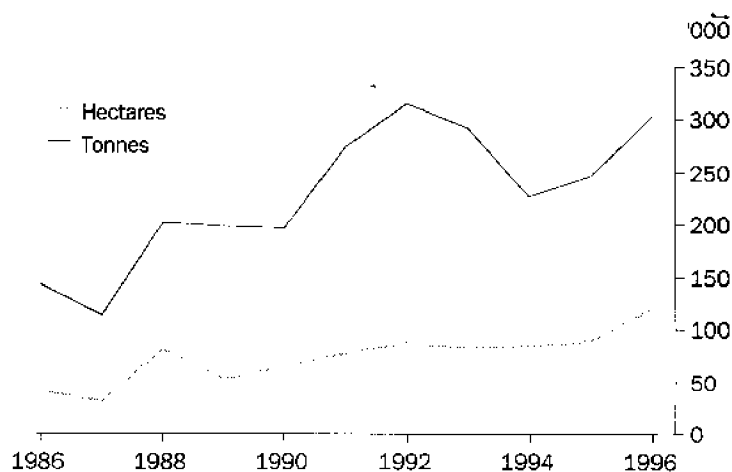
The area and production of lucerne cut for hay remained virtually unchanged in the year ended 31 March 1996 at 183,100 tonnes from 24,500 hectares. The area of other (non-lucerne) pastures for hay decreased by 36.2% to 32,400 hectares and production decreased by 22.0% to 125,300 tonnes (see table 18).

### COTTON

The area planted to seed cotton in the 1995-96 season increased by 35.1% to 119,700 hectares. Production of seed cotton rose by 22.9% to 302,800 tonnes; however, yield decreased from 2.8 to 2.5 tonnes per hectare.

Cotton was primarily grown in the Darling Downs SD, with 81,000 hectares sown and a production of 187,400 tonnes. This accounted for 67.7% and 61.9% respectively of the State's total area and production (see table 20).

COTTON PRODUCTION, YEARS ENDED 31 MARCH



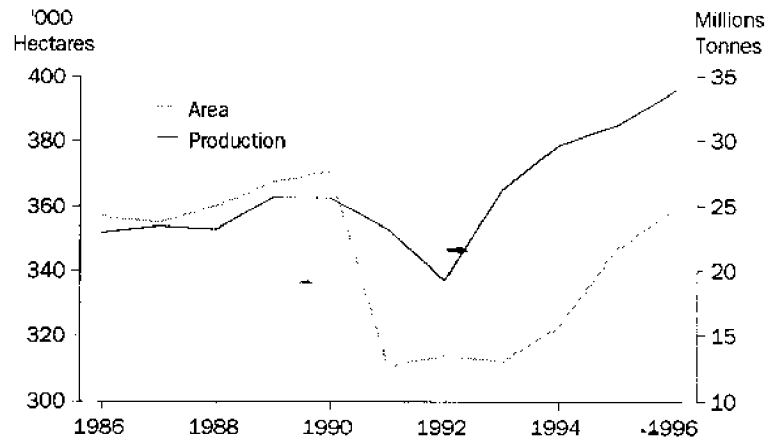
## SUMMARY OF FINDINGS *continued*

### SUGAR CANE

The area planted to sugar cane increased by 3.4% to 358,500 hectares. In the same period, production increased by 8.8% to 33,897,600 tonnes, with an increase in yield from 89.8 tonnes per hectare to 94.6 tonnes per hectare (see table 20).

The Northern SD and Mackay SD together accounted for 63.5% of the State's total production.

SUGAR CANE, AREA AND PRODUCTION, YEARS ENDED 31 MARCH



## SUMMARY OF FINDINGS *continued*

### HORTICULTURE

#### MANDARINS

In the year ended 31 March 1996, the production of mandarins increased by 6.4% to 40,255 tonnes. The total number of trees increased by 5.2%, with the increase occurring in trees six years and over. Mandarins were primarily grown in the Wide Bay-Burnett SD which accounted for 83.9% of the State's production (see table 24).

#### APPLES

The number of apple trees in the year ended 31 March 1996 increased by 5.4% to 880,617. Production also increased, by 1.7% to 28,361 tonnes. The major apple growing area was the Darling Downs SD which accounted for virtually all apples grown in Queensland (see table 24).

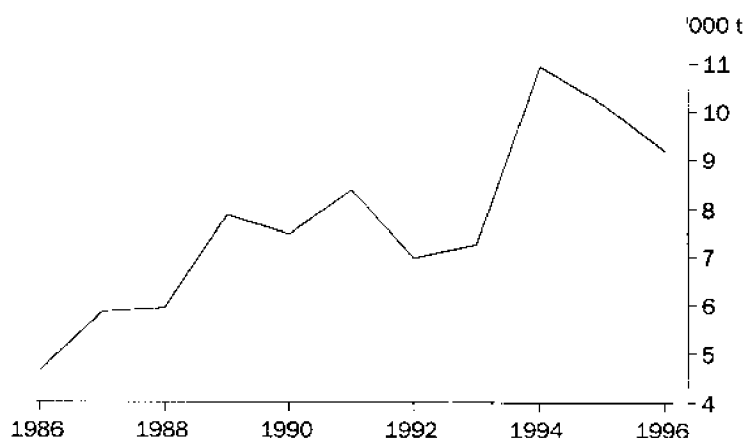
#### MANGOES

In the year ended 31 March 1996, the production of mangoes decreased by 4.7% to 23,274 tonnes. The total number of mango trees increased by 15.8% to 1,031,591 trees. The major mango growing area was the Northern SD which accounted for 58.1% of the State's production (see table 26).

#### AVOCADOS

In the year ended 31 March 1996, the total number of avocado trees increased by 7.4% to 389,156 trees. Production of avocados decreased by 11.3% to 9,006 tonnes. The major avocado growing areas were the Moreton and Brisbane SDs, the Far North SD and the Wide Bay-Burnett SD which together accounted for 91.8% of the State's production (see table 26).

AVOCADO PRODUCTION, YEARS ENDED 31 MARCH

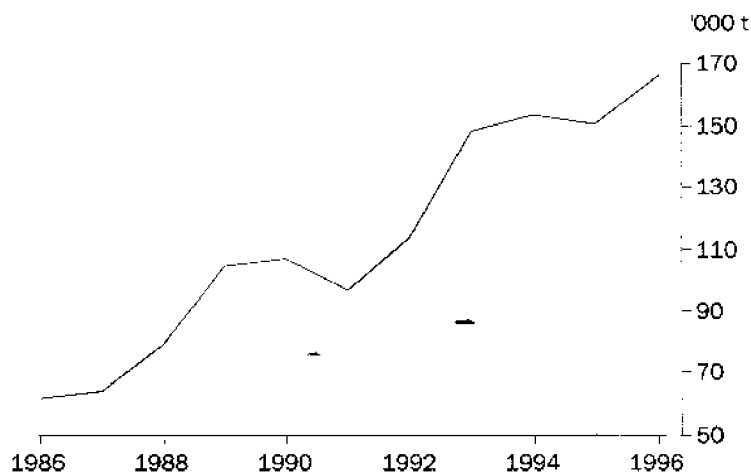


## SUMMARY OF FINDINGS *continued*

### BANANAS

In the year ended 31 March 1996, the production of bananas increased by 10.2% to 165,640 tonnes. The total area of bearing age also increased, by 7.5% to 5,299 hectares. The Far North SD accounted for 94.8% of Queensland's production (see table 27).

BANANA PRODUCTION, YEARS ENDED 31 MARCH



### PINEAPPLES

In the year ended 31 March 1996, the production of pineapples decreased by 7.7% to 127,835 tonnes. The total area of bearing age also decreased, by 12.0% to 2,821 hectares. The Moreton and Brisbane SDs accounted for 61.2% of Queensland's production (see table 27).

PINEAPPLE PRODUCTION, YEARS ENDED 31 MARCH



## SUMMARY OF FINDINGS *continued*

### POTATOES

The total area planted to potatoes in the year ended 31 March 1996 decreased by 2.3% to 4,672 hectares; production decreased by 4.7% to 103,845 tonnes. The Moreton and Brisbane SDs accounted for 46.2% of the State's production (see tables 30 and 31).

### TOMATOES

The total area planted to tomatoes in the year ended 31 March 1996 decreased by 0.9% to 3,394 hectares. Production increased by 1.3% to 102,643 tonnes, while the average yield increased from 29.6 tonnes per hectare to 30.2 tonnes per hectare (see table 30).

TOMATO PRODUCTION, YEARS ENDED 31 MARCH



**SUMMARY OF FINDINGS** *continued*

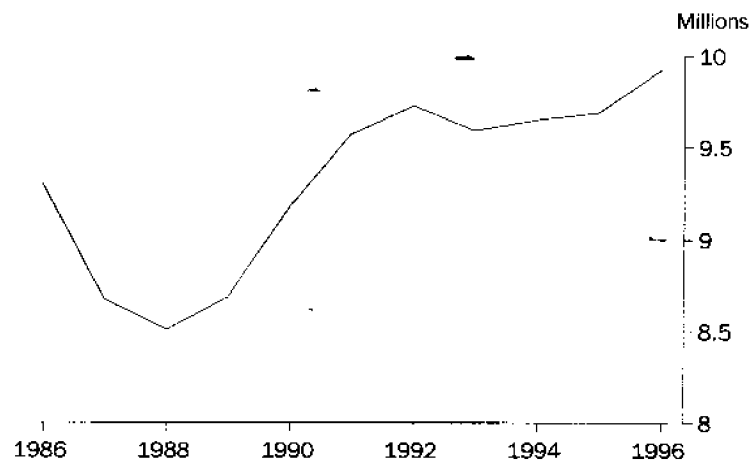
**LIVESTOCK AND LIVESTOCK PRODUCTS**

**MEAT CATTLE**

The meat cattle herd was 9,928,300 at 31 March 1996, a 2.5% increase over the previous year. The number of establishments with meat cattle fell by 3.1% to 20,251. The major regions in terms of cattle numbers were the Fitzroy SD, the North West SD and the Darling Downs SD with 16.9%, 15.0% and 14.1% respectively of the State's meat cattle herd (see tables 36 and 37).

At 31 March 1996, 21.6% of all establishments with meat cattle had a herd size of 500 or over and accounted for 79.2% of the number of meat cattle; 23.1% of all establishments had a herd size of under 50 and yet only accounted for 1.2% of the total herd (see table 38).

MEAT CATTLE, AT 31 MARCH

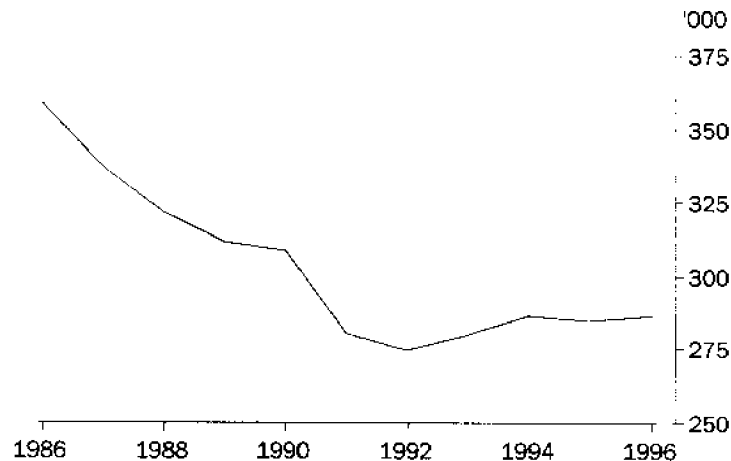


**MILK CATTLE**

At 31 March 1996, the number of milk cattle was 286,100, an increase of 0.6% from the previous year. The number of establishments with milk cattle rose by 6.2% to 2,282 in the same period (see tables 39 and 40).

At 31 March 1996, 19.5% of all establishments with milk cattle had a herd size of 200 or over. These establishments accounted for 44.7% of the number of milk cattle in Queensland (see table 41).

MILK CATTLE, AT 31 MARCH

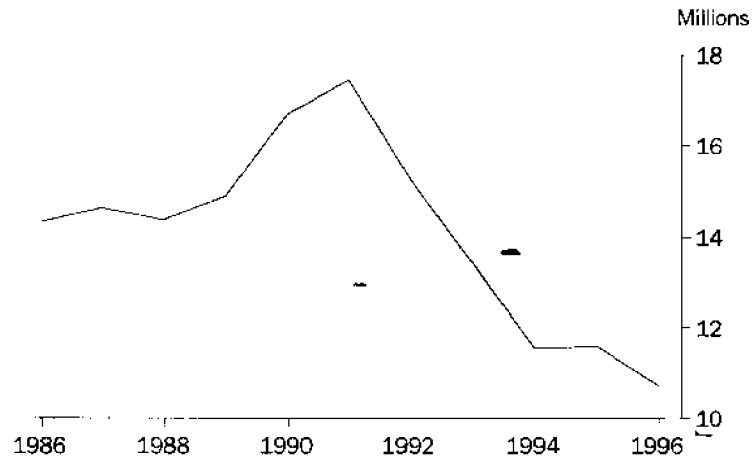


## SUMMARY OF FINDINGS *continued*

### SHEEP AND LAMBS

The number of establishments with sheep and lambs at 31 March 1996 was 2,770, a decrease of 3.4% from 31 March 1995. Sheep and lambs numbers at 31 March 1996 decreased 7.5% to 10.7 million. The South West SD and the Central West SD together accounted for 76.7% of the State's total number of sheep and lambs (see table 42).

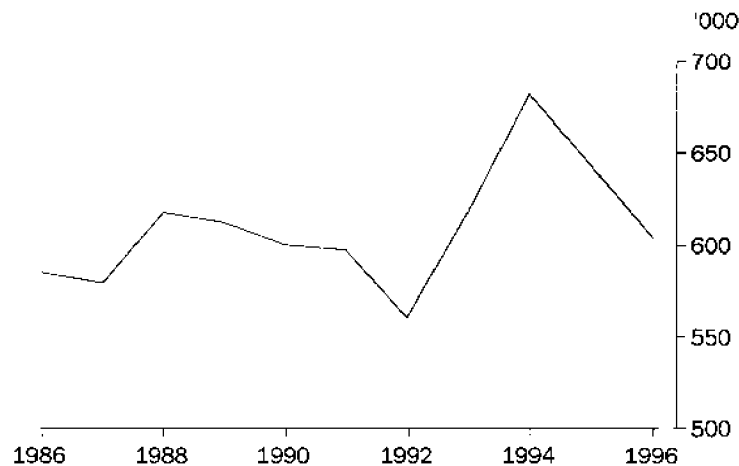
#### SHEEP AND LAMBS, AT 31 MARCH



### PIGS

At 31 March 1996, pigs numbered 603,000, a decrease of 6.3% from the previous year. The number of establishments with pigs stood at 953, a decrease of 8.4% from the previous year. The major SD in terms of pig numbers was Darling Downs which accounted for 50.3% of the State's herd (see table 46).

#### PIGS, AT 31 MARCH



**VALUE OF AGRICULTURAL COMMODITIES PRODUCED**

At the time of publication, preliminary figures only were available for the gross value of agricultural commodities produced for the 1995-96 season.

These figures showed that grain sorghum was the leading cereal crop for grain in terms of value of production (\$301.7m) and accounted for 59.3% of the value of all cereals for grain. The easing of the drought contributed to an increase in the value of the wheat crop for grain, up 140.8% to \$147.1m for the 1995-96 season (see table 21).

Preliminary figures for sugar cane (cut for crushing) showed that the gross value decreased by 1.0% to \$1,145.6m for the 1995-96 season. Sugar cane was the single most valuable crop in Queensland (see table 21).

Preliminary figures showed that bananas remained the leading individual fruit in value terms at \$177.5m, followed by mangoes with a value of production of \$58.0m, and mandarins with \$47.2m (see table 28).

In the 1995-96 season, the major contributor to the gross value of vegetable production was tomatoes with a value of production of \$116.2m, followed by potatoes with \$53.3m. The value of production of tomatoes increased by 13.4% from the previous year, while the value of production of potatoes increased by 12.7% (see table 32).

The gross value of livestock slaughterings decreased by 19.0% to \$1,552.1m for the 1995-96 season. Cattle and calf slaughterings represented 78.3% of this value, followed by pigs and poultry, which represented 10.0% and 9.2% respectively (see table 53).

The value of wool production decreased by 23.3% to \$184.2m for the 1995-96 season. In the same period, the value of milk production increased by 10.0% to \$319.0m, and the value of egg production increased by 37.7% to \$66.1m (see table 53).



# 1

## ESTABLISHMENTS BY INDUSTRY, EVAO \$5,000 and over, At 31 March(a)

Industry class		1994	1995	1996
ANZSIC code	Industry of establishment	no.	no.	no.
0111	Plant nurseries	790	727	696
0112	Cut flower and flower seed growing	192	184	189
0113	Vegetable growing	1 383	1 296	1 376
0114	Grape growing	92	78	88
0115	Apple and pear growing	125	117	109
0116	Stone fruit growing	115	107	89
0117	Kiwi fruit growing	3	3	5
0119	Fruit growing n.e.c.	2 271	2 118	2 127
0121	Grain growing	1 685	1 529	1 764
0122	Grain-sheep/beef cattle farming	1 887	1 494	1 900
0123	Sheep-beef cattle farming	1 209	1 046	1 022
0124	Sheep farming	739	743	771
0125	Beef cattle farming	13 115	11 998	11 751
0130	Dairy cattle farming	1 919	1 916	1 912
0141	Poultry farming (meat)	102	104	98
0142	Poultry farming (eggs)	129	110	103
0151	Pig farming	461	450	428
0152	Horse farming	535	495	524
0153	Deer farming	70	57	55
0159	Livestock farming n.e.c.	481	659	668
0161	Sugar-cane growing	4 651	4 653	4 603
0162	Cotton growing	378	419	508
0169	Crop and plant growing n.e.c.	562	1 626	585
<b>Total (ANZSIC Code 01)</b>		<b>32 894</b>	<b>31 929</b>	<b>31 371</b>
02	Services to agriculture; hunting and trapping	28	26	39
03	Forestry and logging	6	6	8
04	Commercial fishing	2	2	3
<b>Total (ANZSIC Division A)</b>		<b>32 930</b>	<b>31 963</b>	<b>31 421</b>
All other ANZSIC Divisions		227	200	242
Unclassified		1 111	686	523
<b>Total all industries</b>		<b>34 268</b>	<b>32 849</b>	<b>32 186</b>

(a) Number of establishments with an EVAO of \$5,000 or more at the time of selection in the agricultural census. See explanatory note 4 on page 79.

# 2

## ESTABLISHMENTS BY INDUSTRY, EVAO \$22,500 and over, At 31 March

Industry class		1994	1995	1996
ANZSIC code	Industry of establishment	no.	no.	no.
0111	Plant nurseries	637	602	622
0112	Cut flower and flower seed growing	133	133	142
0113	Vegetable growing	1 168	1 117	1 177
0114	Grape growing	60	56	52
0115	Apple and pear growing	112	106	96
0116	Stone fruit growing	71	61	59
0117	Kiwi fruit growing	2	2	3
0119	Fruit growing n.e.c.	1 632	1 540	1 593
0121	Grain growing	1 438	1 292	1 559
0122	Grain-sheep/beef cattle farming	1 631	1 252	1 676
0123	Sheep-beef cattle farming	1 112	984	967
0124	Sheep farming	586	664	693
0125	Beef cattle farming	7 751	7 307	6 939
0130	Dairy cattle farming	1 879	1 852	1 836
0141	Poultry farming (meat)	100	103	96
0142	Poultry farming (eggs)	122	101	98
0151	Pig farming	427	423	395
0152	Horse farming	274	214	233
0153	Deer farming	51	38	38
0159	Livestock farming n.e.c.	228	275	353
0161	Sugar cane growing	4 580	4 600	4 552
0162	Cotton growing	378	416	507
0169	Crop and plant growing n.e.c.	489	1 471	460
<b>Total (ANZSIC Code 01)</b>		<b>24 861</b>	<b>24 609</b>	<b>24 146</b>
02	Services to agriculture; hunting and trapping	18	23	28
03	Forestry and logging	2	1	5
04	Commercial fishing	—	2	—
<b>Total (ANZSIC Division A)</b>		<b>24 881</b>	<b>24 635</b>	<b>24 179</b>
All other ANZSIC Divisions		122	126	138
Unclassified		—	1	—
<b>Total all industries</b>		<b>25 003</b>	<b>24 762</b>	<b>24 317</b>

## 3

## ESTABLISHMENTS WITH AGRICULTURAL ACTIVITY, Statistical divisions, EVAO \$5,000 &amp; over(a)(b)

	1994	1995	1996
<i>Statistical division</i>	no.	no.	no.
Moreton and Brisbane	6 291	5 961	5 733
Wide Bay-Burnett	6 088	5 828	5 687
Darling Downs	7 764	7 346	7 148
South West	1 808	1 769	1 749
Fitzroy	3 370	3 263	3 197
Central West	721	712	709
Mackay	2 252	2 241	2 217
Northern	2 216	2 122	2 132
Far North	3 244	3 102	3 105
North West	514	505	509
<b>Queensland</b>	<b>34 268</b>	<b>32 849</b>	<b>32 186</b>

(a) See explanatory note 4 on page 79.

(b) Figures are at 31 March.

## 4

## ESTABLISHMENTS WITH AGRICULTURAL ACTIVITY, Statistical divisions, EVAO \$22,500 &amp; over(a)

	1994	1995	1996
<i>Statistical division</i>	no.	no.	no.
Moreton and Brisbane	3 821	3 691	3 542
Wide Bay-Burnett	4 095	4 047	3 897
Darling Downs	5 388	5 415	5 341
South West	1 543	1 567	1 577
Fitzroy	2 410	2 385	2 347
Central West	685	682	674
Mackay	1 915	1 934	1 924
Northern	1 954	1 889	1 907
Far North	2 700	2 669	2 628
North West	492	483	480
<b>Queensland</b>	<b>25 003</b>	<b>24 762</b>	<b>24 317</b>

(a) Figures are at 31 March.

## ESTIMATED VALUE OF AGRICULTURAL OPERATIONS (\$).....

Industry class		Less than 5,000(a)	5,000 to 22,499	22,500 to 49,999	50,000 to 99,999
ANZSIC code	Industry of establishment	no.	no.	no.	no.
0111	Plant nurseries	6	68	132	119
0112	Cut flower and flower seed growing	5	42	38	37
0113	Vegetable growing	32	167	227	234
0114	Grape growing	3	33	29	13
0115	Apple and pear growing	1	12	14	18
0116	Stone fruit growing	6	24	25	17
0117	Kiwi fruit growing	—	2	2	1
0119	Fruit growing n.e.c.	58	476	439	379
0121	Grain growing	35	170	322	456
0122	Grain-sheep/beef cattle farming	10	214	363	430
0123	Sheep-beef cattle farming	4	51	95	154
0124	Sheep farming	12	66	99	175
0125	Beef cattle farming	624	4 188	2 356	1 604
0130	Dairy cattle farming	6	70	143	317
0141	Poultry farming (meat)	2	—	1	2
0142	Poultry farming (eggs)	—	5	6	11
0151	Pig farming	11	22	46	62
0152	Horse farming	41	250	143	57
0153	Deer farming	5	12	17	10
0159	Livestock farming n.e.c.	60	255	137	90
0161	Sugar cane growing	11	40	160	675
0162	Cotton growing	1	—	—	5
0169	Crop and plant growing n.e.c.	44	81	114	120
<b>Total (ANZSIC Code 01)</b>		<b>977</b>	<b>6 248</b>	<b>4 908</b>	<b>4 986</b>
02	Services to agriculture; hunting and trapping	2	9	9	5
03	Forestry and logging	1	2	3	1
04	Commercial fishing	2	1	—	—
<b>Total (ANZSIC Division A)</b>		<b>982</b>	<b>6 260</b>	<b>4 920</b>	<b>4 992</b>
All other ANZSIC Divisions		13	91	49	27
Unclassified		523	—	—	—
<b>Total all industries</b>		<b>1 518</b>	<b>6 351</b>	<b>4 969</b>	<b>5 019</b>

(a) See explanatory note 4 on page 79.

## ESTIMATED VALUE OF AGRICULTURAL OPERATIONS (\$)

Industry class		100,000 to 199,999	200,000 to 499,999	500,000 or more	Total establishments
ANZSIC code	Industry of establishment	no.	no.	no.	no.
0111	Plant nurseries	181	122	68	696
0112	Cut flower and flower seed growing	37	19	11	189
0113	Vegetable growing	240	257	219	1 376
0114	Grape growing	6	3	1	88
0115	Apple and pear growing	29	24	11	109
0116	Stone fruit growing	11	6	—	89
0117	Kiwi fruit growing	—	—	—	5
0119	Fruit growing n.e.c.	295	304	176	2 127
0121	Grain growing	429	284	68	1 764
0122	Grain-sheep/beef cattle farming	431	372	80	1 900
0123	Sheep-beef cattle farming	307	340	71	1 022
0124	Sheep farming	237	154	28	771
0125	Beef cattle farming	1 370	1 144	465	11 751
0130	Dairy cattle farming	813	539	24	1 912
0141	Poultry farming (meat)	6	19	68	98
0142	Poultry farming (eggs)	46	29	36	103
0151	Pig farming	104	121	62	428
0152	Horse farming	24	9	—	524
0153	Deer farming	5	4	2	55
0159	Livestock farming n.e.c.	56	51	19	668
0161	Sugar cane growing	1 704	1 585	428	4 603
0162	Cotton growing	31	133	338	508
0169	Crop and plant growing n.e.c.	147	73	6	585
<b>Total (ANZSIC Code 01)</b>		<b>6 479</b>	<b>5 592</b>	<b>2 181</b>	<b>31 371</b>
02	Services to agriculture; hunting and trapping	9	4	1	39
03	Forestry and logging	1	—	—	8
04	Commercial fishing	—	—	—	3
<b>Total (ANZSIC Division A)</b>		<b>6 489</b>	<b>5 596</b>	<b>2 182</b>	<b>31 421</b>
All other ANZSIC Divisions		22	27	13	242
Unclassified		—	—	—	523
<b>Total all industries</b>		<b>6 511</b>	<b>5 623</b>	<b>2 195</b>	<b>32 186</b>

		AREA OF ESTABLISHMENT (HECTARES).....				
Industry class		0 to 49	50 to 99	100 to 499	500 to 999	1,000 to 2,499
ANZSIC code	Industry of establishment	no.	no.	no.	no.	no.
0111	Plant nurseries	594	54	42	2	2
0112	Cut flower and flower seed growing	151	15	14	3	4
0113	Vegetable growing	655	332	324	33	25
0114	Grape growing	55	19	13	1	—
0115	Apple and pear growing	70	24	14	1	—
0116	Stone fruit growing	49	21	18	1	—
0117	Kiwi fruit growing	5	—	—	—	—
0119	Fruit growing n.e.c.	1 330	411	322	38	19
0121	Grain growing	82	189	906	260	199
0122	Grain-sheep/beef cattle farming	14	90	642	266	391
0123	Sheep-beef cattle farming	4	2	39	51	100
0124	Sheep farming	3	6	40	37	99
0125	Beef cattle farming	718	1 250	3 781	1 281	1 476
0130	Dairy cattle farming	107	348	1 281	128	35
0141	Poultry farming (meat)	74	13	10	1	—
0142	Poultry farming (eggs)	62	12	18	7	3
0151	Pig farming	112	62	191	31	21
0152	Horse farming	205	119	162	18	11
0153	Deer farming	25	8	15	1	3
0159	Livestock farming n.e.c.	360	81	133	37	31
0161	Sugar cane growing	982	1 538	1 874	134	49
0162	Cotton growing	2	7	215	122	104
0169	Crop and plant growing n.e.c.	215	169	160	26	7
<b>Total (ANZSIC Code 01)</b>		<b>5 874</b>	<b>4 770</b>	<b>10 214</b>	<b>2 479</b>	<b>2 579</b>
02	Services to agriculture; hunting and trapping	10	13	9	4	1
03	Forestry and logging	1	—	2	1	2
04	Commercial fishing	1	—	2	—	—
<b>Total (ANZSIC Division A)</b>		<b>5 886</b>	<b>4 783</b>	<b>10 227</b>	<b>2 484</b>	<b>2 582</b>
All other ANZSIC Divisions		87	41	64	17	13
Unclassified		209	85	131	32	30
<b>Total all industries</b>		<b>6 182</b>	<b>4 909</b>	<b>10 422</b>	<b>2 533</b>	<b>2 625</b>

## AREA OF ESTABLISHMENT (HECTARES).....

Industry class		2,500 to 4,999	5,000 to 9,999	10,000 to 24,999	25,000 to 49,999	50,000 to 99,999
ANZSIC code	Industry of establishment	no.	no.	no.	no.	no.
0111	Plant nurseries	1	1	—	—	—
0112	Cut flower and flower seed growing	2	—	—	—	—
0113	Vegetable growing	3	3	1	—	—
0114	Grape growing	—	—	—	—	—
0115	Apple and pear growing	—	—	—	—	—
0116	Stone fruit growing	—	—	—	—	—
0117	Kiwi fruit growing	—	—	—	—	—
0119	Fruit growing n.e.c.	3	3	1	—	—
0121	Grain growing	92	28	6	2	—
0122	Grain-sheep/beef cattle farming	277	158	57	4	—
0123	Sheep-beef cattle farming	85	144	351	161	60
0124	Sheep farming	91	123	241	92	30
0125	Beef cattle farming	968	785	802	335	161
0130	Dairy cattle farming	8	4	—	—	—
0141	Poultry farming (meat)	—	—	—	—	—
0142	Poultry farming (eggs)	1	—	—	—	—
0151	Pig farming	5	4	2	—	—
0152	Horse farming	5	4	—	—	—
0153	Deer farming	—	3	—	—	—
0159	Livestock farming n.e.c.	4	9	7	2	2
0161	Sugar cane growing	12	9	5	—	—
0162	Cotton growing	26	19	11	1	1
0169	Crop and plant growing n.e.c.	4	3	1	—	—
<b>Total (ANZSIC Code 01)</b>		<b>1 587</b>	<b>1 300</b>	<b>1 485</b>	<b>597</b>	<b>254</b>
02	Services to agriculture: hunting and trapping	1	—	1	—	—
03	Forestry and logging	2	—	—	—	—
04	Commercial fishing	—	—	—	—	—
<b>Total (ANZSIC Division A)</b>		<b>1 590</b>	<b>1 300</b>	<b>1 486</b>	<b>597</b>	<b>254</b>
All other ANZSIC Divisions		5	7	5	2	1
Unclassified		12	13	8	2	1
<b>Total all industries</b>		<b>1 607</b>	<b>1 320</b>	<b>1 499</b>	<b>601</b>	<b>256</b>

## AREA OF ESTABLISHMENT (HECTARES) .....

Industry class		100,000 to 199,999	200,000 to 499,999	500,000 or more	Total establishments
ANZSIC code	Industry of establishment	no.	no.	no.	no.
0111	Plant nurseries	—	—	—	696
0112	Cut flower and flower seed growing	—	—	—	189
0113	Vegetable growing	—	—	—	1 376
0114	Grape growing	—	—	—	88
0115	Apple and pear growing	—	—	—	109
0116	Stone fruit growing	—	—	—	89
0117	Kiwi fruit growing	—	—	—	5
0119	Fruit growing n.e.c.	—	—	—	2 127
0121	Grain growing	—	—	—	1 764
0122	Grain-sheep/beef cattle farming	1	—	—	1 900
0123	Sheep-beef cattle farming	21	4	—	1 022
0124	Sheep farming	7	2	—	771
0125	Beef cattle farming	93	75	26	11 751
0130	Dairy cattle farming	1	—	—	1 912
0141	Poultry farming (meat)	—	—	—	98
0142	Poultry farming (eggs)	—	—	—	103
0151	Pig farming	—	—	—	428
0152	Horse farming	—	—	—	524
0153	Deer farming	—	—	—	55
0159	Livestock farming n.e.c.	2	—	—	668
0161	Sugar cane growing	—	—	—	4 603
0162	Cotton growing	—	—	—	508
0169	Crop and plant growing n.e.c.	—	—	—	585
<b>Total (ANZSIC Code 01)</b>		<b>125</b>	<b>81</b>	<b>26</b>	<b>31 371</b>
02	Services to agriculture; hunting and trapping	—	—	—	39
03	Forestry and logging	—	—	—	8
04	Commercial fishing	—	—	—	3
<b>Total (ANZSIC Division A)</b>		<b>125</b>	<b>81</b>	<b>26</b>	<b>31 421</b>
All other ANZSIC Divisions		—	—	—	242
Unclassified		—	—	—	523
<b>Total all industries</b>		<b>125</b>	<b>81</b>	<b>26</b>	<b>32 186</b>



## 7

## AREA AND LAND USE OF ESTABLISHMENTS WITH AGRICULTURAL ACTIVITY, At 31 March 1996

Statistical division	Area of cereal crops(a)	Area of other crops	Area of orchard trees	Area of vegetables
	'000 ha	'000 ha	'000 ha	'000 ha
Moreton and Brisbane	12.2	27.4	4.7	11.9
Wide Bay-Burnett	45.8	88.2	7.4	5.2
Darling Downs	924.2	217.1	4.4	5.0
South West	200.5	52.8	—	0.2
Fitzroy	290.4	121.5	1.6	0.7
Central West	0.8	0.2	—	—
Mackay	103.7	140.4	0.2	0.1
Northern	1.8	109.4	3.4	7.8
Far North	7.0	91.6	5.6	2.0
North West	0.4	0.1	—	—
<b>Queensland</b>				
1996	<b>1 586.8</b>	<b>848.6</b>	<b>27.3</b>	<b>32.8</b>
1995	<b>1 182.9</b>	<b>639.4</b>	<b>27.3</b>	<b>31.2</b>
1994	<b>1 911.1</b>	<b>1 151.7</b>	<b>25.3</b>	<b>33.9</b>

Statistical division	Area of holding	Area of non-agricultural land(b)	Total area (agricultural and non-agricultural land)
	'000 ha	'000 ha	'000 ha
Moreton and Brisbane	1 038.3	1 324.3	2 362.6
Wide Bay-Burnett	3 863.6	1 447.8	5 311.4
Darling Downs	7 964.5	1 078.6	9 043.1
South West	30 107.9	2 258.4	32 366.3
Fitzroy	10 797.3	2 334.9	13 132.2
Central West	32 658.8	4 531.1	37 189.9
Mackay	6 212.1	729.0	6 941.1
Northern	9 511.5	1 388.4	10 899.9
Far North	18 332.3	8 645.5	26 977.8
North West	29 261.7	2 042.0	31 303.7
<b>Queensland</b>			
1996	<b>149 748.0</b>	<b>25 779.9</b>	<b>175 527.9</b>
1995	<b>149 688.3</b>	<b>25 839.7</b>	<b>175 527.9</b>
1994	<b>152 569.2</b>	<b>22 958.7</b>	<b>175 527.9</b>

(a) Excludes pastures and grasses harvested for hay and seed.

(b) Comprises conserved land, forestry, urban and unused land such as vacant Crown land, commercially unused land on Aboriginal and other Crown reserves and waste land, ephemeral lakes, mangrove swamps, etc.

## 8

## CROP STUBBLE DISPOSAL, Year ended 31 March 1996

## AREA ON WHICH THE FOLLOWING CROP STUBBLE TECHNIQUES WERE USED .....

<i>Statistical division</i>	<i>Stubble was burnt</i>	<i>Stubble removed by grazing, baling or fire harrowing</i>	<i>Stubble was incorporated(a)</i>	<i>Stubble was mulched(b)</i>	<i>Stubble was left intact(c)</i>
	'000 ha	'000 ha	'000 ha	'000 ha	'000 ha
Moreton and Brisbane	0.3	1.9	6.0	1.2	1.4
Wide Bay-Burnett	0.7	7.1	26.6	4.4	2.8
Darling Downs	14.0	101.8	447.2	164.1	78.5
South West	2.7	21.8	100.1	25.7	19.3
Fitzroy	2.4	74.7	133.4	53.7	14.9
Central West	—	—	—	—	—
Mackay	1.0	26.5	39.9	39.1	5.9
Northern	0.6	0.5	3.8	0.5	2.6
Far North	0.4	0.6	5.0	0.5	1.3
North West	—	—	—	—	—
<b>Queensland</b>					
<b>1996</b>	<b>21.9</b>	<b>234.8</b>	<b>762.1</b>	<b>289.1</b>	<b>126.6</b>
<b>1995</b>	<b>49.2</b>	<b>n.c.</b>	<b>— 696.7</b>	<b>147.3</b>	<b>125.2</b>

(a) Farm machinery used to plough stubble into soil.

(b) Farm machinery used to chop or slash stubble into smaller lengths.

(c) No cultivation; crops sown by direct drilling.

## 9

## CULTIVATION OF BROADACRE CROPS, Year ended 31 March 1996

<i>Statistical division</i>	<i>More than two cultivations</i>	<i>One or two cultivations</i>	<i>No cultivation</i>
	'000 ha	'000 ha	'000 ha
Moreton and Brisbane	10.4	1.7	0.5
Wide Bay-Burnett	33.4	8.2	2.5
Darling Downs	603.8	220.8	78.4
South West	103.0	76.5	15.8
Fitzroy	222.1	97.1	15.4
Central West	—	0.2	0.1
Mackay	91.1	38.9	5.5
Northern	3.4	0.5	0.2
Far North	4.5	1.7	0.3
North West	—	—	—
<b>Queensland</b>	<b>1 071.6</b>	<b>445.6</b>	<b>118.7</b>

TREES PLANTED ON CLEARED  
LAND(b) .....

## SEEDLINGS PLANTED.....

Statistical division	TREES PLANTED ON CLEARED LAND(b)		SEEDLINGS PLANTED.....			
	For timber/pulp ha	Other purposes ha	For timber/pulp no.	ha	Other purposes no.	ha
Moreton and Brisbane	367.2	228.9	29 105	33.4	155 722	272.2
Wide Bay-Burnett	238.1	588.3	28 463	29.4	67 731	204.2
Darling Downs	88.8	309.0	41 820	35.0	15 140	75.6
South West	3.5	2.0	352	—	7 747	24.2
Fitzroy	16.8	2 763.6	655	1.1	3 280	115.0
Central West	—	—	—	—	—	—
Mackay	103.0	222.7	19 886	17.4	6 070	18.2
Northern	49.3	96.8	8 969	7.6	4 140	6.8
Far North	285.4	157.7	90 072	99.9	30 672	71.6
North West	—	—	—	—	20	0.1
<b>Queensland</b>	<b>1 152.1</b>	<b>4 369.0</b>	<b>219 322</b>	<b>223.8</b>	<b>290 522</b>	<b>787.9</b>

## SEED SOWN .....

## TIMBER HARVESTED .....

Statistical division	SEED SOWN		TIMBER HARVESTED	
	kg	ha	Hardwood t	Softwood t
Moreton and Brisbane	50	10.0	84.2	5 234.5
Wide Bay-Burnett	281	284.5	1 692.0	—
Darling Downs	9	4.0	6.0	5.0
South West	10 040	420.0	—	—
Fitzroy	2 163	1 803.0	—	—
Central West	—	—	—	—
Mackay	250	160.0	—	—
Northern	80	10.0	—	—
Far North	50	10.0	—	—
North West	—	—	—	—
<b>Queensland</b>	<b>12 923</b>	<b>2 701.5</b>	<b>1 782.2</b>	<b>5 239.5</b>

(a) Data in this table are an aggregation of responding establishments. No imputation has been made for non-responding establishments.

(b) Area of cleared land planted with trees at 31 March 1996. Includes trees planted during reference and earlier years.

## KILOMETRES ERECTED TO ISOLATE.....

Statistical division	Saline areas	Other degraded areas	Creeks and rivers	Remnant native vegetation	Planted trees and shrubs
	km	km	km	km	km
Moreton and Brisbane	44.1	36.7	128.5	194.0	163.5
Wide Bay-Burnett	30.4	115.1	116.4	242.9	171.7
Darling Downs	41.6	87.3	201.8	2 040.4	205.1
South West	8.0	78.4	72.9	210.0	3.5
Fitzroy	210.5	295.9	150.9	199.3	272.9
Central West	14.0	35.0	124.5	128.5	—
Mackay	22.0	80.0	68.0	102.5	65.7
Northern	5.0	49.2	14.8	33.5	10.9
Far North	33.2	32.5	1 160.6	75.4	946.7
North West	1.2	254.0	29.0	1 304.9	0.3
<b>Queensland</b>	<b>410.0</b>	<b>1 064.1</b>	<b>2 067.4</b>	<b>4 531.4</b>	<b>1 840.3</b>

## AREA ISOLATED.....

Statistical division	Saline areas	Other degraded areas	Remnant native vegetation	Planted trees and shrubs	Other
	ha	ha	ha	ha	ha
Moreton and Brisbane	122.2	604.4	1 112.9	312.7	360.1
Wide Bay-Burnett	302.4	1 566.8	9 041.3	509.3	4 289.8
Darling Downs	226.0	7 047.5	13 540.2	1 922.2	15 305.0
South West	1 921.0	5 752.0	22 554.0	19.3	6 401.0
Fitzroy	769.8	6 146.5	6 496.1	595.8	13 669.3
Central West	8.0	2 021.3	113 320.0	—	1 300.0
Mackay	200.0	3 446.5	4 385.9	216.1	2 823.6
Northern	32.0	21 467.3	11 123.3	4 329.0	246.2
Far North	19.2	6 552.0	27 910.7	2 469.9	3 181.3
North West	51.2	118 170.0	3 243.2	0.3	8 214.6
<b>Queensland</b>	<b>3 851.8</b>	<b>172 774.3</b>	<b>212 727.6</b>	<b>10 374.6</b>	<b>55 790.9</b>

(a) Data in this table are an aggregation of responding establishments. No imputation has been made for non-responding establishments.

Statistical division	NITROGENOUS....		PHOSPHATIC.....		POTASSIUM .....		COMPOUND .....	
	Area	Weight	Area	Weight	Area	Weight	Area	Weight
	'000 ha	'000 t	'000 ha	'000 t	'000 ha	'000 t	'000 ha	'000 t
Moreton and Brisbane	36.4	17.0	9.8	2.9	12.0	4.9	17.9	8.2
Wide Bay-Burnett	54.2	17.4	25.7	5.6	24.5	6.5	58.7	22.7
Darling Downs	319.6	45.5	62.7	4.7	6.5	1.4	218.3	13.0
South West	17.7	3.8	5.6	0.4	0.1	—	25.5	1.2
Fitzroy	55.4	10.9	9.9	2.5	8.2	1.3	30.3	2.3
Central West	—	—	—	—	—	—	—	—
Mackay	74.5	34.8	16.4	7.7	23.4	13.3	51.4	21.7
Northern	92.3	47.4	13.8	4.0	22.0	5.9	45.1	22.0
Far North	70.7	30.4	24.3	8.6	36.3	12.0	53.9	29.1
North West	0.3	0.1	0.1	—	—	—	0.2	0.1
<b>Queensland</b>	<b>721.2</b>	<b>207.4</b>	<b>166.4</b>	<b>36.4</b>	<b>132.9</b>	<b>45.2</b>	<b>501.5</b>	<b>120.4</b>

(a) Data in this table are an aggregation of responding establishments. No imputation has been made for non-responding establishments.

# 13

## SOIL CONDITIONERS, Year ended 31 March 1996(a)

Statistical division	LIME.....		DOLOMITE-ACIDITY(b)		DOLOMITE-PHYSICAL(c)		GYPSUM .....	
	Area	Weight	Area	Weight	Area	Weight	Area	Weight
	'000 ha	'000 t	'000 ha	'000 t	'000 ha	'000 t	'000 ha	'000 t
Moreton and Brisbane	5.0	8.5	1.9	2.8	0.6	0.6	1.6	2.4
Wide Bay-Burnett	10.4	26.4	2.6	3.8	0.7	1.2	2.8	4.5
Darling Downs	1.5	2.2	0.9	1.1	1.4	0.4	4.4	9.1
South West	—	—	—	—	—	—	0.6	0.6
Fitzroy	0.2	0.4	0.1	—	—	—	2.3	3.7
Central West	—	—	—	—	—	—	—	—
Mackay	4.0	8.5	—	0.1	—	—	0.4	0.8
Northern	10.1	40.1	0.3	0.5	0.1	0.6	5.7	16.4
Far North	17.1	37.8	3.8	7.8	0.5	1.1	1.4	1.2
North West	—	—	—	—	—	—	—	—
<b>Queensland</b>	<b>48.4</b>	<b>124.0</b>	<b>9.6</b>	<b>16.1</b>	<b>3.4</b>	<b>3.8</b>	<b>19.2</b>	<b>38.7</b>

(a) Data in this table are an aggregation of responding establishments. No imputation has been made for non-responding establishments.

(b) Dolomite used to correct soil acidity problems.

(c) Dolomite used to correct physical soil problems.

# 14

## MAINTENANCE AND MANAGEMENT OF PASTURES, Year ended 31 March 1996(a)

Statistical division	Top dressing	Weed control	Pest and disease control	Slashing and burning	Total area
	'000 ha	'000 ha	'000 ha	'000 ha	'000 ha
Moreton and Brisbane	18.3	23.3	7.8	17.8	67.2
Wide Bay-Burnett	21.7	29.1	2.1	47.5	100.4
Darling Downs	8.2	25.8	3.2	21.6	58.8
South West	0.4	11.3	0.1	12.2	24.0
Fitzroy	2.8	25.7	6.9	14.8	50.2
Central West	—	5.8	5.9	5.0	16.7
Mackay	10.2	14.1	1.6	9.0	35.0
Northern	2.2	5.3	2.3	6.8	16.6
Far North	25.6	16.3	1.1	35.7	78.8
North West	3.3	18.8	0.1	50.8	73.0
<b>Queensland</b>	<b>92.7</b>	<b>175.5</b>	<b>31.1</b>	<b>221.2</b>	<b>520.6</b>

(a) Data in this table are an aggregation of responding establishments. No imputation has been made for non-responding establishments.

<i>Statistical division</i>	<i>Total area irrigated</i>	<i>Evaporation</i>	<i>Tensiometers</i>	<i>Soil probes</i>	<i>Government or commercial</i>	<i>Calendar/rotational</i>	<i>Local knowledge</i>	<i>Other</i>
	'000 ha	no.	no.	no.	no.	no.	no.	no.
Moreton and Brisbane	26.8	22	93	41	9	102	1 406	62
Wide Bay-Burnett	45.6	58	80	46	32	137	1 131	59
Darling Downs	47.7	28	33	66	18	51	758	43
South West	14.0	5	1	19	2	5	48	4
Fitzroy	20.7	22	21	34	12	23	298	17
Central West	0.1	—	—	1	—	—	3	—
Mackay	30.2	40	5	2	5	32	380	30
Northern	37.7	51	18	10	13	66	428	19
Far North	14.7	43	61	11	14	66	594	37
North West	0.4	—	—	—	—	—	3	—
<b>Queensland</b>	<b>237.9</b>	<b>269</b>	<b>312</b>	<b>230</b>	<b>105</b>	<b>482</b>	<b>5 049</b>	<b>271</b>

(a) Data in this table are an aggregation of responding establishments. No imputation has been made for non-responding establishments.

## BARLEY .....

## GRAIN SORGHUM .....

Statistical division	Area	Production	Yield	Area	Production	Yield
	'000 ha	'000 t	t/ha	'000 ha	'000 t	t/ha
Moreton and Brisbane	2.1	3.7	1.8	3.7	13.2	3.6
Wide Bay-Burnett	4.0	5.0	1.2	15.3	42.7	2.8
Darling Downs	143.9	174.6	1.2	269.1	733.6	2.7
South West	11.3	6.1	0.5	45.4	68.7	1.5
Fitzroy	5.7	4.6	0.8	172.3	176.2	1.0
Central West	—	—	—	0.3	0.7	2.0
Mackay	0.8	0.9	1.2	89.4	78.7	0.9
Northern	—	—	—	0.7	0.6	0.9
Far North	—	—	—	0.7	1.3	2.0
North West	—	—	—	—	—	—
<b>Queensland</b>						
1996	167.8	195.0	1.2	596.8	1 115.6	1.9
1995	93.5	72.8	0.8	519.2	916.5	1.8
1994	232.2	260.5	1.1	398.7	851.6	2.1

## MAIZE .....

## OATS .....

Statistical division	Area	Production	Yield	Area	Production	Yield
	'000 ha	'000 t	t/ha	'000 ha	'000 t	t/ha
Moreton and Brisbane	1.3	5.5	4.2	0.1	0.1	0.5
Wide Bay-Burnett	11.5	37.0	3.2	0.7	0.3	0.4
Darling Downs	10.8	40.9	3.8	10.4	5.9	0.6
South West	0.1	0.3	3.1	2.3	0.6	0.3
Fitzroy	1.1	1.3	1.2	0.5	—	0.1
Central West	—	—	—	—	—	—
Mackay	0.2	0.1	0.3	—	—	—
Northern	0.2	0.2	1.0	—	—	—
Far North	5.8	28.4	4.9	—	—	—
North West	—	—	—	—	—	—
<b>Queensland</b>						
1996	31.0	113.6	3.7	14.1	6.9	0.5
1995	27.2	79.9	2.9	13.7	3.2	0.2
1994	27.6	87.1	3.2	15.9	7.8	0.5



Statistical division	PANICUM AND MILLET.....			TRITICALE.....		
	Area	Production	Yield	Area	Production	Yield
	'000 ha	'000 t	t/ha	'000 ha	'000 t	t/ha
Moreton and Brisbane	0.2	0.3	1.7	0.2	0.3	1.7
Wide Bay-Burnett	0.5	0.6	1.2	0.1	0.2	1.3
Darling Downs	17.0	21.6	1.3	4.9	7.2	1.5
South West	0.2	0.1	0.8	0.3	0.4	1.3
Fitzroy	0.7	0.5	0.7	0.2	0.3	1.4
Central West	—	—	—	—	—	—
Mackay	—	—	—	—	—	—
Northern	—	—	—	—	—	—
Far North	—	—	—	—	—	—
North West	—	—	—	—	—	—
<b>Queensland</b>						
1996	18.6	23.1	1.2	5.8	8.4	1.4
1995	34.8	33.2	1.0	1.1	1.3	1.2
1994	32.4	29.1	0.9	3.6	5.4	1.5

Statistical division	WHEAT .....		
	Area	Production	Yield
	'000 ha	'000 t	t/ha
Moreton and Brisbane	0.6	1.0	1.6
Wide Bay-Burnett	6.1	7.2	1.2
Darling Downs	391.1	380.1	1.0
South West	124.9	70.7	0.6
Fitzroy	90.9	49.3	0.5
Central West	0.4	0.4	1.0
Mackay	12.3	10.5	0.8
Northern	0.2	0.3	1.0
Far North	—	0.1	3.8
North West	—	—	—
<b>Queensland</b>			
1996	626.5	519.5	0.8
1995	400.7	225.1	0.6
1994	555.5	555.4	1.0

## CHICK PEAS .....

## MUNG BEANS .....

Statistical division	Area	Production	Yield	Area	Production	Yield
	'000 ha	'000 t	t/ha	'000 ha	'000 t	t/ha
Moreton and Brisbane	—	—	0.9	—	—	1.5
Wide Bay-Burnett	0.1	0.1	0.7	0.3	0.2	0.6
Darling Downs	16.4	10.3	0.6	11.3	5.7	0.5
South West	0.9	0.2	0.3	3.6	1.4	0.4
Fitzroy	7.3	1.8	0.2	8.1	2.4	0.3
Central West	—	—	—	—	—	—
Mackay	1.6	0.7	0.5	0.2	—	0.2
Northern	—	—	—	—	—	—
Far North	—	—	0.4	0.1	0.1	1.2
North West	—	—	—	—	—	—
<b>Queensland</b>						
1996	26.3	13.1	0.5	23.5	9.8	0.4
1995	18.9	7.8	0.4	21.7	9.7	0.4
1994	7.4	4.2	0.6	32.7	19.3	0.6

## FABA BEANS.....

## LUPINS .....

Statistical division	Area	Production	Yield	Area	Production	Yield
	'000 ha	'000 t	t/ha	'000 ha	'000 t	t/ha
Moreton and Brisbane	—	—	—	—	—	—
Wide Bay-Burnett	—	—	—	0.1	—	0.4
Darling Downs	1.5	1.8	0.8	0.1	—	0.3
South West	0.4	0.4	0.9	—	—	—
Fitzroy	—	—	—	—	—	—
Central West	—	—	—	—	—	—
Mackay	—	—	—	—	—	—
Northern	—	—	—	—	—	—
Far North	—	—	—	0.3	0.3	0.9
North West	—	—	—	—	—	—
<b>Queensland</b>						
1996	1.9	2.2	1.2	0.5	0.3	0.7
1995	1.4	0.7	0.5	0.3	0.2	0.7
1994	0.2	0.6	3.0	0.1	0.1	1.0

Statistical division	LUÇERNE .....			OTHER PASTURES .....		
	Area	Production	Yield	Area	Production	Yield
	'000 ha	'000 t	t/ha	'000 ha	'000 t	t/ha
Moreton and Brisbane	8.6	71.5	8.3	8.8	39.7	4.5
Wide Bay-Burnett	4.9	36.4	7.4	4.2	19.2	4.5
Darling Downs	7.4	45.6	6.2	6.0	21.7	3.6
South West	0.5	0.7	1.4	0.7	1.6	2.4
Fitzroy	2.6	26.5	10.1	4.2	16.6	4.0
Central West	0.1	0.1	1.0	1.4	0.7	0.5
Mackay	0.1	0.7	5.9	1.1	4.5	4.3
Northern	0.1	0.9	6.3	1.4	5.4	3.9
Far North	0.1	0.6	4.3	1.7	9.9	5.8
North West	—	0.1	7.4	3.0	6.0	2.0
<b>Queensland</b>						
1996	24.5	183.1	7.5	32.4	125.3	3.9
1995	24.8	188.1	7.6	50.8	160.6	3.2
1994	23.3	184.4	7.9	22.3	77.8	3.5

Statistical division	TOTAL PASTURES .....		
	Area	Production	Yield
	'000 ha	'000 t	t/ha
Moreton and Brisbane	17.4	111.1	6.4
Wide Bay-Burnett	9.2	55.6	6.1
Darling Downs	13.4	67.3	5.0
South West	1.2	2.3	1.9
Fitzroy	6.8	43.1	6.3
Central West	1.5	0.8	0.6
Mackay	1.2	5.2	4.4
Northern	1.5	6.3	4.1
Far North	1.8	10.5	5.7
North West	3.0	6.1	2.0
<b>Queensland</b>			
1996	57.0	308.4	5.4
1995	75.6	348.7	4.6
1994	45.6	262.2	5.8

Statistical division	CEREAL CROPS .....			LAB LAB PURPUREUS .....		
	Area '000 ha	Production '000 t	Yield t/ha	Area '000 ha	Production '000 t	Yield t/ha
Moreton and Brisbane	0.8	3.8	5.0	0.3	2.0	6.5
Wide Bay-Burnett	1.2	4.4	3.5	0.8	3.8	4.7
Darling Downs	11.7	29.2	2.5	1.2	6.0	5.1
South West	1.9	3.0	1.6	0.2	0.4	2.0
Fitzroy	3.7	15.6	4.2	0.6	1.0	1.6
Central West	—	0.2	6.8	—	—	—
Mackay	0.5	0.6	1.3	—	0.1	8.6
Northern	0.1	0.4	4.7	—	0.1	2.9
Far North	—	0.1	2.4	0.1	0.2	2.9
North West	0.3	1.9	7.3	—	—	—
<b>Queensland</b>						
1996	20.1	59.0	2.9	3.2	13.6	4.2
1995	n.c.	n.c.	n.c.	n.c.	n.c.	n.c.
1994	n.c.	n.c.	n.c.	n.c.	n.c.	n.c.

Statistical division	CANOLA .....			SAFFLOWER .....		
	Area ha	Production t	Yield t/ha	Area ha	Production t	Yield t/ha
Moreton and Brisbane	17.3	17.7	1.0	—	—	—
Wide Bay-Burnett	26.8	13.4	0.5	—	—	—
Darling Downs	160.0	50.0	0.3	24.8	30.7	1.2
South West	—	—	—	—	—	—
Fitzroy	37.0	23.5	0.6	—	—	—
Central West	—	—	—	—	—	—
Mackay	—	—	—	—	—	—
Northern	—	—	—	—	—	—
Far North	—	—	—	—	—	—
North West	—	—	—	—	—	—
<b>Queensland</b>						
1996	241.1	104.6	0.4	24.8	30.7	1.2
1995	95.0	9.0	0.1	254.5	104.0	0.4
1994	54.0	23.5	0.4	806.0	221.6	0.3

Statistical division	SOYBEANS .....			SUNFLOWER .....		
	Area ha	Production t	Yield t/ha	Area ha	Production t	Yield t/ha
Moreton and Brisbane	2 610.0	5 788.5	2.2	98.2	99.9	1.0
Wide Bay-Burnett	2 876.4	4 877.5	1.7	190.5	224.8	1.2
Darling Downs	3 140.4	4 596.0	1.5	8 578.2	9 317.7	1.1
South West	1 218.9	2 938.4	2.4	943.0	577.0	0.6
Fitzroy	218.3	382.8	1.8	25 131.8	12 431.5	0.5
Central West	—	—	—	—	—	—
Mackay	—	—	—	11 027.5	4 776.2	0.4
Northern	—	—	—	80.0	—	—
Far North	8.5	15.0	1.8	—	—	—
North West	—	—	—	—	—	—
<b>Queensland</b>						
1996	10 072.5	18 598.2	1.8	46 049.2	27 427.1	0.6
1995	8 592.2	7 785.3	1.2	84 640.2	55 956.2	0.7
1994	16 532.1	29 235.0	1.8	70 409.5	52 213.7	0.7

## COTTON (SEED) .....

## PEANUTS .....

Statistical division	Area	Production	Yield	Area	Production	Yield
	'000 ha	'000 t	t/ha	'000 ha	'000 t	t/ha
Moreton and Brisbane	—	—	—	0.2	0.9	4.4
Wide Bay-Burnett	0.1	0.2	2.0	13.2	19.9	1.5
Darling Downs	81.0	187.4	2.3	1.3	1.7	1.3
South West	16.4	50.8	3.1	0.4	1.0	2.4
Fitzroy	20.8	63.0	3.0	1.6	4.4	2.7
Central West	—	—	—	—	—	—
Mackay	1.3	1.0	0.8	0.1	0.5	4.6
Northern	0.1	0.4	4.1	0.2	0.6	3.1
Far North	—	—	—	2.8	8.6	3.1
North West	—	—	—	—	—	—
<b>Queensland</b>						
1996	119.7	302.8	2.5	19.8	37.6	1.9
1995	88.6	246.3	2.8	12.9	22.5	1.7
1994	83.6	227.5	2.7	21.1	43.6	2.1

## SUGAR CANE (CUT FOR CRUSHING).....

## TOBACCO .....

Statistical division	Area	Production	Yield	Area	Production	Yield
	'000 ha	'000 t	t/ha	'000 ha	'000 t	t/ha
Moreton and Brisbane	10.7	830.7	77.7	0.1	0.1	2.0
Wide Bay-Burnett	52.9	4 400.1	83.2	—	—	—
Darling Downs	—	—	—	—	—	—
South West	—	—	—	—	—	—
Fitzroy	—	—	—	—	—	—
Central West	—	—	—	—	—	—
Mackay	109.8	10 019.9	91.3	—	—	—
Northern	107.6	11 490.4	106.8	—	—	—
Far North	77.6	7 156.4	92.2	1.6	4.4	2.8
North West	—	—	—	—	—	—
<b>Queensland</b>						
1996	358.5	33 897.6	94.6	1.6	4.5	2.8
1995	348.7	31 145.5	89.8	1.4	3.8	2.7
1994	322.8	29 637.6	91.8	1.5	3.9	2.6

# 21

## GROSS VALUE OF PRINCIPAL CROPS AND PASTURES

	1993-94	1994-95	1995-96
	\$m	\$m	\$m
<b>Cereals for grain</b>			
Barley	37.2	16.3	37.6
Grain sorghum	134.2	173.2	301.7
Maize	18.8	19.7	13.9
Oats	1.4	0.7	1.1
Panicum and millet	11.0	10.7	3.9
Triticale	0.8	0.3	1.6
Wheat	101.8	61.1	147.1
Other	2.1	2.2	2.2
<b>Total</b>	<b>307.3</b>	<b>284.2</b>	<b>509.1</b>
Crops for hay	2.4	9.2	21.3
Pastures and grasses for hay	54.6	183.1	51.7
Pastures and grasses harvested for seed	6.9	3.8	4.4
<b>Other crops</b>			
Cotton	168.9	256.0	301.8
Peanuts	32.6	16.8	33.8
Sugar cane (cut for crushing)	901.1	1 157.4	1 145.6
Tobacco (dried leaf)	24.2	23.1	29.7

	AREA SOWN (HECTARES)					
	0 to 49	50 to 99	100 to 149	150 to 199	200 to 299	300 to 399
<b>Barley for grain</b>						
establishments (number)	1 263	522	253	86	90	23
percentage of total establishments	55.4	22.9	11.1	3.8	3.9	1.0
area (hectares)	28 838	35 878	29 413	14 221	20 889	7 558
percentage of total area of barley planted	17.2	21.4	17.5	8.5	12.4	4.5
production (tonnes)	38 620	48 487	35 619	18 067	20 295	8 811
percentage of total barley production	19.8	24.9	18.3	9.3	10.4	4.5
<b>Grain sorghum for grain</b>						
establishments (number)	1 438	716	465	236	316	139
percentage of total establishments	39.1	19.5	12.6	6.4	8.6	3.8
area (hectares)	33 551	49 941	55 397	39 502	73 662	46 325
percentage of total area of grain sorghum planted	5.6	8.4	9.3	6.6	12.3	7.8
production (tonnes)	96 166	135 340	142 273	100 310	154 440	84 152
percentage of total grain sorghum production	8.6	12.1	12.8	9.0	13.8	7.5
<b>Wheat for grain</b>						
establishments (number)	779	503	358	171	273	143
percentage of total establishments	29.1	18.8	13.4	6.4	10.2	5.3
area (hectares)	19 588	35 890	42 307	28 592	64 474	47 798
percentage of total area of wheat planted	3.1	5.7	6.8	4.6	10.3	7.6
production (tonnes)	25 206	44 823	47 973	31 690	54 665	38 728
percentage of total wheat production	4.9	8.6	9.2	6.1	10.5	7.5

	AREA SOWN (HECTARES)					
	400 to 499	500 to 999	1,000 to 1,499	1,500 to 1,999	2,000 and over	Total
<b>Barley for grain</b>						
establishments (number)	20	16	5	1	1	2 280
percentage of total establishments	0.9	0.7	0.2	—	—	100.0
area (hectares)	8 495	10 817	5 715	1 548	4 475	167 847
percentage of total area of barley planted	5.1	6.4	3.4	0.9	2.7	100.0
production (tonnes)	8 620	9 407	4 972	1 000	1 129	195 028
percentage of total barley production	4.4	4.8	2.5	0.5	0.6	100.0
<b>Grain sorghum for grain</b>						
establishments (number)	103	179	56	15	14	3 677
percentage of total establishments	2.8	4.9	1.5	0.4	0.4	100.0
area (hectares)	44 522	117 275	66 432	25 521	44 694	596 823
percentage of total area of grain sorghum planted	7.5	19.6	11.1	4.3	7.5	100.0
production (tonnes)	70 759	175 736	81 267	27 525	47 670	1 115 639
percentage of total grain sorghum production	6.3	15.8	7.3	2.5	4.3	100.0
<b>Wheat for grain</b>						
establishments (number)	125	200	78	27	20	2 677
percentage of total establishments	4.7	7.5	2.9	1.0	0.7	100.0
area (hectares)	53 723	137 726	91 253	45 658	59 504	626 512
percentage of total area of wheat planted	8.6	22.0	14.6	7.3	9.5	100.0
production (tonnes)	41 428	94 428	61 979	29 627	48 922	519 470
percentage of total wheat production	8.0	18.2	11.9	5.7	9.4	100.0

(a) Year ended 31 March 1996.



	Barley	Grain sorghum	Maize	Millet	Oats	Triticale	Wheat
<i>Statistical division</i>	no.	no.	no.	no.	no.	no.	no.
Moreton and Brisbane	165	196	81	18	22	10	38
Wide Bay-Burnett	158	376	236	25	26	7	147
Darling Downs	1 807	2 224	237	400	380	50	1 759
South West	74	197	2	2	43	3	374
Fitzroy	69	553	16	21	14	3	324
Central West	—	2	—	—	1	—	1
Mackay	5	112	3	—	1	—	31
Northern	—	2	3	—	—	—	2
Far North	2	15	130	—	—	—	1
North West	—	—	—	—	—	—	—
<b>Queensland</b>							
1996	2 280	3 677	708	466	487	73	2 677
1995	1 318	3 315	599	704	376	38	1 706
1994	2 788	3 042	708	667	530	138	2 370

## APPLES.....

## NASHI .....

Statistical division	Trees under 6 years	Trees 6 years and over	Production	Yield	Trees under 6 years	Trees 6 years and over	Production	Yield
	no.	no.	t	kg/tree	no.	no.	t	kg/tree
Moreton and Brisbane	—	—	—	—	—	—	—	—
Wide Bay-Burnett	—	20	—	—	—	—	—	—
Darling Downs	379 452	501 145	28 360.7	56.6	3 268	2 180	57.8	26.5
South West	—	—	—	—	—	—	—	—
Fitzroy	—	—	—	—	—	—	—	—
Central West	—	—	—	—	—	—	—	—
Mackay	—	—	—	—	—	—	—	—
Northern	—	—	—	—	—	—	—	—
Far North	—	—	—	—	—	—	—	—
North West	—	—	—	—	—	—	—	—
<b>Queensland</b>								
1996	379 452	501 165	28 360.7	56.6	3 268	2 180	57.8	26.5
1995	343 595	491 749	27 873.1	56.7	2 245	1 930	38.1	19.7
1994	268 477	475 074	26 305.5	55.4	2 183	1 579	13.9	8.7

## PEARS (EXCLUDING NASHI) .....

Statistical division	Trees under 6 years	Trees 6 years and over	Production	Yield
	no.	no.	t	kg/tree
Moreton and Brisbane	—	—	—	—
Wide Bay-Burnett	—	—	—	—
Darling Downs	4 235	27 897	1 676.5	60.1
South West	—	—	—	—
Fitzroy	—	—	—	—
Central West	—	—	—	—
Mackay	—	—	—	—
Northern	—	—	—	—
Far North	—	—	—	—
North West	—	—	—	—
<b>Queensland</b>				
1996	4 235	27 897	1 676.5	60.1
1995	5 820	23 895	1 372.3	57.4
1994	6 355	30 354	1 515.6	49.9

(a) Yield is calculated for trees 6 years and over only. However, the production figure used to calculate yield includes any contribution by trees under 6 years. In most cases this contribution is relatively insignificant, but in some instances it can distort yield figures.

## LEMONS AND LIMES.....

Statistical division	Trees under 6 years	Trees 6 years and over	Production	Yield	Trees under 6 years	Trees 6 years and over	Production	Yield
	no.	no.	t	kg/tree	no.	no.	t	kg/tree
Moreton and Brisbane	10 462	40 161	2 792.9	69.5	9 818	14 655	736.8	50.2
Wide Bay-Burnett	27 540	24 480	2 651.2	108.3	242 301	333 180	33 779.3	101.4
Darling Downs	92	3	0.8	264.7	306	24	2.7	113.8
South West	50	10	1.2	124.0	—	1 230	42.5	34.6
Fitzroy	16 741	1 788	141.1	78.9	174 004	47 633	5 113.4	107.3
Central West	—	10	0.4	40.0	—	51	2.1	40.2
Mackay	1 268	382	19.6	51.3	1 308	232	17.9	77.3
Northern	874	684	21.3	31.1	2 126	5 560	88.6	15.9
Far North	9 574	5 417	201.4	37.2	8 533	16 018	471.3	29.4
North West	—	—	—	—	—	—	—	—
<b>Queensland</b>								
1996	66 601	72 935	5 830.0	79.9	438 396	418 583	40 254.7	96.2
1995	70 389	67 385	6 593.4	97.8	457 321	358 203	37 838.2	105.6
1994	71 160	59 455	5 979.6	100.6	443 510	256 700	36 147.9	140.8

## MANDARINS.....

## ORANGES.....

Statistical division	Trees under 6 years	Trees 6 years and over	Production	Yield
	no.	no.	t	kg/tree
Moreton and Brisbane	9 030	52 164	4 738.5	90.8
Wide Bay-Burnett	80 250	108 811	10 755.7	98.8
Darling Downs	219	1 226	23.1	18.8
South West	50	393	10.3	26.1
Fitzroy	2 062	21 163	243.8	11.5
Central West	—	46	1.9	40.2
Mackay	425	105	7.0	66.5
Northern	2 139	2 529	92.7	36.7
Far North	2 223	6 283	296.6	47.2
North West	—	—	—	—
<b>Queensland</b>				
1996	96 398	192 720	16 169.5	83.9
1995	72 842	194 847	18 076.5	92.8
1994	97 428	182 181	20 694.6	113.6

(a) Yield is calculated for trees 6 years and over only. However, the production figure used to calculate yield includes any contribution by trees under 6 years. In most cases this contribution is relatively insignificant, but in some instances it can distort yield figures.

## APRICOTS .....

Statistical division	Trees under	Trees 6 years	Production	Yield
	6 years	and over		
	no.	no.	t	kg/tree
Moreton and Brisbane	230	585	0.9	1.5
Wide Bay-Burnett	50	3	0.1	31.7
Darling Downs	17 194	20 784	147.6	7.1
South West	—	—	—	—
Fitzroy	10	—	—	—
Central West	—	—	—	—
Mackay	—	—	—	—
Northern	—	—	—	—
Far North	—	—	—	—
North West	—	—	—	—
<b>Queensland</b>				
1996	17 484	21 372	148.6	7.0
1995	18 318	21 490	212.6	9.9
1994	17 484	19 983	310.7	15.5

## CHERRIES.....

Statistical division	Trees under	Trees 6 years	Production	Yield
	6 years	and over		
	no.	no.	t	kg/tree
Moreton and Brisbane	—	—	—	—
Wide Bay-Burnett	—	—	—	—
Darling Downs	4 896	114	0.2	1.4
South West	—	—	—	—
Fitzroy	10	—	—	—
Central West	—	—	—	—
Mackay	—	—	—	—
Northern	—	—	—	—
Far North	—	—	—	—
North West	—	—	—	—
<b>Queensland</b>				
1996	4 906	114	0.2	1.4
1995	429	108	0.5	5.0
1994	810	—	—	—

## NECTARINES .....

Statistical division	Trees under	Trees 6 years	Production	Yield
	6 years	and over		
	no.	no.	t	kg/tree
Moreton and Brisbane	19 762	12 665	246.8	19.5
Wide Bay-Burnett	15 126	8 869	161.4	18.2
Darling Downs	105 899	116 642	954.5	8.2
South West	—	—	—	—
Fitzroy	1 172	1 330	5.0	3.8
Central West	—	—	—	—
Mackay	—	—	—	—
Northern	—	—	—	—
Far North	587	1 161	6.7	5.8
North West	—	—	—	—
<b>Queensland</b>				
1996	142 546	140 667	1 374.4	9.8
1995	144 483	121 720	1 455.8	12.0
1994	139 281	118 629	2 434.5	20.5

## PEACHES .....

Statistical division	Trees under	Trees 6 years	Production	Yield
	6 years	and over		
	no.	no.	t	kg/tree
Moreton and Brisbane	19 245	10 367	223.7	21.6
Wide Bay-Burnett	23 169	18 212	243.0	13.3
Darling Downs	155 347	110 426	1 243.1	11.3
South West	—	—	—	—
Fitzroy	710	1 736	8.8	5.0
Central West	—	—	—	—
Mackay	—	—	—	—
Northern	—	—	—	—
Far North	7 093	2 763	34.0	12.3
North West	—	—	—	—
<b>Queensland</b>				
1996	205 764	143 504	1 752.8	12.2
1995	171 339	130 245	1 749.0	13.4
1994	149 694	133 150	2 423.4	18.2

(a) Yield is calculated for trees 6 years and over only. However, the production figure used to calculate yield includes any contribution by trees under 6 years. In most cases this contribution is relatively insignificant, but in some instances it can distort yield figures.

## PLUMS AND PRUNES.....

<i>Statistical division</i>	<i>Trees under 6 years</i> no.	<i>Trees 6 years and over</i> no.	<i>Production</i> t	<i>Yield</i> kg/tree
Moreton and Brisbane	2 518	402	26.7	66.3
Wide Bay-Burnett	5 399	3 073	35.2	11.5
Darling Downs	82 237	141 151	1 477.9	10.5
South West	—	—	—	—
Fitzroy	30	—	0.1	—
Central West	—	—	—	—
Mackay	—	—	—	—
Northern	—	—	—	—
Far North	108	—	0.5	—
North West	—	—	—	—
<b>Queensland</b>				
<b>1996</b>	<b>90 292</b>	<b>144 626</b>	<b>1 540.4</b>	<b>10.7</b>
<b>1995</b>	<b>93 779</b>	<b>152 243</b>	<b>1 847.8</b>	<b>12.1</b>
<b>1994</b>	<b>96 322</b>	<b>158 785</b>	<b>1 799.4</b>	<b>11.3</b>

(a) Yield is calculated for trees 6 years and over only. However, the production figure used to calculate yield includes any contribution by trees under 6 years. In most cases this contribution is relatively insignificant, but in some instances it can distort yield figures.

## AVOCADOS .....

Statistical division	Trees under 6 years	Trees 6 years and over	Production	Yield
	no.	no.	t	kg/tree
Moreton and Brisbane	37 965	112 048	3 295.0	29.4
Wide Bay-Burnett	58 345	55 015	2 235.7	40.6
Darling Downs	20 360	19 650	613.4	31.2
South West	—	—	—	—
Fitzroy	340	4 536	101.2	22.3
Central West	—	—	—	—
Mackay	209	160	8.2	51.4
Northern	344	1 036	18.9	18.3
Far North	36 627	42 521	2 733.8	64.3
North West	—	—	—	—
<b>Queensland</b>				
1996	154 190	234 986	9 006.2	38.3
1995	134 524	227 836	10 157.0	44.8
1994	118 237	235 925	10 945.9	46.4

## MACADAMIA NUTS .....

Statistical division	Trees under 6 years	Trees 6 years and over	Production	Yield
	no.	no.	t	kg/tree
Moreton and Brisbane	124 886	207 562	2 049.8	9.9
Wide Bay-Burnett	345 249	327 725	2 727.3	8.3
Darling Downs	5 850	3 410	11.3	3.3
South West	—	—	—	—
Fitzroy	33 141	15 851	116.2	7.3
Central West	—	—	—	—
Mackay	68	164	0.7	4.1
Northern	7	2	—	1.0
Far North	16 170	115 085	674.7	5.9
North West	—	—	—	—
<b>Queensland</b>				
1996	525 371	669 799	5 579.8	8.3
1995	654 512	544 771	4 796.3	8.8
1994	—613 215	533 020	4 172.2	7.8

## MANGOES .....

Statistical division	Trees under 6 years	Trees 6 years and over	Production	Yield
	no.	no.	t	kg/tree
Moreton and Brisbane	36 080	30 471	682.6	22.4
Wide Bay-Burnett	63 711	57 559	2 440.4	42.4
Darling Downs	3	3	0.1	27.4
South West	—	—	—	—
Fitzroy	49 505	40 837	1 162.8	28.5
Central West	—	—	—	—
Mackay	2 857	3 078	47.1	15.3
Northern	124 821	222 326	13 528.9	60.9
Far North	250 082	150 158	5 411.9	36.0
North West	100	—	0.5	—
<b>Queensland</b>				
1996	527 159	504 432	23 274.3	46.1
1995	465 531	425 428	24 415.8	57.5
1994	411 413	424 978	15 768.6	37.1

(a) Yield is calculated for trees 6 years and over only. However, the production figure used to calculate yield includes any contribution by trees under 6 years. In most cases this contribution is relatively insignificant, but in some instances it can distort yield figures.

## BANANAS .....

Statistical division	Area not yet bearing	Area of bearing age	Production	Yield
	ha	ha	t	t/ha
Moreton and Brisbane	82.7	408.9	5 134.7	12.6
Wide Bay-Burnett	25.3	102.6	1 177.2	11.5
Darling Downs	—	—	—	—
South West	—	—	—	—
Fitzroy	1.3	4.6	73.4	16.0
Central West	—	—	—	—
Mackay	5.6	11.5	307.5	26.7
Northern	25.7	50.1	1 933.9	38.6
Far North	1 136.2	4 720.9	157 012.9	33.3
North West	—	—	—	—
<b>Queensland</b>				
1996	1 276.8	5 298.6	165 639.6	31.3
1995	1 066.2	4 929.8	150 345.4	30.5
1994	975.2	5 129.5	153 255.7	29.9

## KIWI FRUIT .....

Statistical division	Area not yet bearing	Area of bearing age	Production	Yield
	ha	ha	t	t/ha
Moreton and Brisbane	4.0	20.6	176.2	8.6
Wide Bay-Burnett	1.0	1.5	—	—
Darling Downs	—	10.0	36.1	3.6
South West	—	—	—	—
Fitzroy	—	—	—	—
Central West	—	—	—	—
Mackay	—	—	—	—
Northern	—	—	—	—
Far North	1.5	1.0	30.6	30.6
North West	—	—	—	—
<b>Queensland</b>				
1996	6.5	33.1	243.0	7.3
1995	8.0	34.7	277.9	8.0
1994	11.5	36.3	221.5	6.1

## PAPAWS .....

Statistical division	Area not yet bearing	Area of bearing age	Production	Yield
	ha	ha	t	t/ha
Moreton and Brisbane	32.2	73.9	756.3	10.2
Wide Bay-Burnett	40.1	69.8	1 011.6	14.5
Darling Downs	—	—	—	—
South West	—	—	—	—
Fitzroy	13.7	27.7	372.6	13.5
Central West	—	—	—	—
Mackay	0.2	1.7	13.2	7.8
Northern	1.0	1.8	18.3	10.2
Far North	93.9	120.1	3 340.9	27.8
North West	—	—	—	—
<b>Queensland</b>				
1996	181.1	295.0	5 512.9	18.7
1995	193.9	297.7	6 050.3	20.3
1994	209.3	380.4	5 962.4	15.7

## PINEAPPLES .....

Statistical division	Area not yet bearing	Area of bearing age	Production	Yield
	ha	ha	t	t/ha
Moreton and Brisbane	1 049.3	1 490.6	78 204.0	52.5
Wide Bay-Burnett	542.4	802.9	29 744.0	37.0
Darling Downs	—	—	—	—
South West	—	—	—	—
Fitzroy	191.0	372.3	14 226.5	38.2
Central West	—	—	—	—
Mackay	10.0	26.1	1 056.1	40.5
Northern	52.0	98.2	3 527.7	35.9
Far North	25.7	30.5	1 076.7	35.3
North West	—	—	—	—
<b>Queensland</b>				
1996	1 870.4	2 820.6	127 835.0	45.3
1995	2 016.3	3 205.6	138 465.2	43.2
1994	2 201.3	3 663.0	157 394.6	43.0

## STRAWBERRIES.....

<i>Statistical division</i>	<i>Area not yet bearing</i> ha	<i>Area of bearing age</i> ha	<i>Production</i> t	<i>Yield</i> t/ha
Moreton and Brisbane	56.2	181.4	2 986.4	16.8
Wide Bay-Burnett	4.0	6.6	79.7	12.1
Darling Downs	0.5	1.6	9.3	5.8
South West	—	—	—	—
Fitzroy	—	0.6	1.8	3.0
Central West	—	—	—	—
Mackay	0.5	0.4	3.9	9.8
Northern	—	0.1	0.2	2.0
Far North	1.5	4.2	49.5	11.8
North West	—	—	—	—
<b>Queensland</b>				
1996	62.7	194.9	3 130.7	16.3
1995	41.7	152.1	2 157.4	14.2
1994	59.0	146.7	2 349.7	16.0



## 28

## GROSS VALUE OF CITRUS, POME AND OTHER FRUIT

	1993-94	1994-95	1995-96p
	\$m	\$m	\$m
Apples	16.3	21.4	25.1
Apricots	0.7	0.4	0.3
Avocados	23.4	23.9	25.3
Bananas	133.8	182.7	177.5
Grapes	7.1	8.8	7.7
Lemons and limes	5.3	5.4	6.0
Mandarins	34.3	50.3	47.2
Mangoes	36.9	56.1	58.0
Nectarines	4.4	2.9	3.0
Oranges	13.6	10.2	12.4
Peaches	4.3	2.8	3.1
Pears	1.1	0.8	0.9
Pineapples	45.2	43.3	39.2
Plums and prunes	2.6	3.1	3.8
Strawberries	11.3	11.0	17.0
Other, including nuts	29.0	37.1	34.9
<b>Total</b>	<b>369.3</b>	<b>460.1</b>	<b>461.2</b>

## 29

## GRAPES, Year ended 31 March 1996

## AREA OF VINES AT HARVEST .....

Not yet bearing (planted or grafted)

## GRAPE PRODUCTION .....

Statistical division	Planted or grafted prior to collection year	During collection year	Bearing	Winemaking	Drying	Table and other	Total
	ha	ha	ha	t	t	t	t
Moreton and Brisbane	2.3	1.3	80.2	4.1	—	138.3	142.4
Wide Bay-Burnett	27.0	37.4	177.2	1.5	—	987.4	988.9
Darling Downs	29.5	24.7	387.3	539.8	—	656.2	1 196.0
South West	2.0	17.1	149.4	50.7	—	1 045.5	1 096.1
Fitzroy	11.8	22.3	115.6	3.0	—	419.0	422.0
Central West	—	—	—	—	—	—	—
Mackay	—	—	—	—	—	—	—
Northern	12.2	6.4	32.3	—	—	91.6	91.6
Far North	7.1	3.5	24.9	19.2	—	28.1	47.3
North West	—	—	—	—	—	—	—
<b>Queensland</b>							
1996	91.9	112.7	966.9	618.3	—	3 366.1	3 984.4
1995	85.2	70.9	893.9	379.8	—	3 522.8	3 902.6
1994	59.6	93.3	1 001.4	412.7	—	3 636.3	4 049.0

	Units	1994	1995	1996
<b>Asparagus(a)</b>				
area	ha	118.9	144.9	244.8
production	t	559.9	626.6	847.8
<b>Beans — French and runner</b>				
area	ha	3 950.4	3 488.0	3 924.4
production	t	18 003.9	15 640.0	17 176.4
yield	t/ha	4.6	4.5	4.4
<b>Beetroot</b>				
area	ha	679.2	755.1	756.2
production	t	23 052.0	26 205.5	25 448.0
yield	t/ha	33.9	34.7	33.7
<b>Broccoli</b>				
area	ha	1 378.9	1 190.1	1 627.7
production	t	8 273.1	7 074.3	7 657.7
yield	t/ha	6.0	5.9	4.7
<b>Brussel sprouts</b>				
area	ha	1.0	3.3	5.3
production	t	3.8	29.3	48.1
yield	t/ha	3.8	8.9	9.1
<b>Cabbages</b>				
area	ha	380.0	505.6	430.6
production	t	10 797.8	15 326.8	14 540.5
yield	t/ha	28.4	30.3	33.8
<b>Capsicum, chillies and peppers</b>				
area	ha	1 020.9	1 022.2	1 104.6
production	t	18 591.7	19 576.0	23 104.5
yield	t/ha	18.2	19.2	20.9
<b>Carrots</b>				
area	ha	1 039.0	1 080.6	1 073.1
production	t	26 856.3	34 940.3	29 426.3
yield	t/ha	25.8	32.3	27.4
<b>Cauliflower</b>				
area	ha	443.6	335.2	395.3
production	t	9 742.7	8 249.7	9 290.5
yield	t/ha	22.0	24.6	23.5
<b>Celery</b>				
area	ha	215.5	226.7	210.5
production	t	12 269.8	11 198.7	13 228.9
yield	t/ha	56.9	49.4	62.8
<b>Chinese cabbages</b>				
area	ha	102.0	85.7	131.9
production	t	2 802.4	2 402.3	3 171.4
yield	t/ha	27.5	28.0	24.0
<b>Cucumber</b>				
area	ha	486.1	444.7	446.1
production	t	6 765.1	5 854.9	6 642.1
yield	t/ha	13.9	13.2	14.9
<b>Green peas (pod weight)</b>				
area	ha	1 037.3	607.8	280.0
production	t	8 623.3	1 716.6	2 360.9
yield	t/ha	8.3	2.8	8.4
<b>Leeks</b>				
area	ha	65.1	73.0	59.2
production	t	369.4	355.5	281.0
yield	t/ha	5.7	4.9	4.7
<b>Lettuces</b>				
area	ha	1 020.6	1 097.9	1 311.1
production	t	25 820.1	29 051.0	34 287.4
yield	t/ha	25.3	26.5	26.2
<b>Marrows and squashes</b>				
area	ha	243.3	237.6	226.3
production	t	1 019.3	1 234.6	914.0
yield	t/ha	4.2	5.2	4.0

(a) Asparagus is a perennial crop and as such yield cannot be calculated meaningfully.

	Units	1994	1995	1996
<b>Melons — rock and cantaloupe</b>				
area	ha	1 322.6	1 501.0	1 328.5
production	t	32 318.2	36 416.2	37 964.0
yield	t/ha	24.4	24.3	28.6
<b>Melons — water</b>				
area	ha	3 205.1	2 931.2	3 196.5
production	t	45 077.1	50 049.8	56 347.5
yield	t/ha	14.1	17.1	17.6
<b>Melons — other</b>				
area	ha	n.c.	n.c.	103.4
production	t	n.c.	n.c.	872.2
yield	t/ha	n.c.	n.c.	8.4
<b>Mushrooms</b>				
area	ha	12.8	16.1	18.0
production	t	3 097.6	3 819.9	4 398.4
yield	t/ha	242.0	237.3	244.4
<b>Onions — white and brown</b>				
area	ha	792.6	827.6	710.4
production	t	25 711.0	25 372.5	24 933.6
yield	t/ha	32.4	30.7	35.1
<b>Parsley</b>				
area	ha	27.4	18.7	24.8
production	t	420.1	445.0	447.5
yield	t/ha	15.3	23.8	18.0
<b>Potatoes</b>				
area	ha	5 033.9	4 781.6	4 672.0
production	t	118 001.7	109 004.0	103 845.1
yield	t/ha	23.4	22.8	22.2
<b>Pumpkins</b>				
area	ha	3 384.6	2 731.5	3 334.4
production	t	32 881.6	32 561.6	43 265.8
yield	t/ha	9.7	11.9	13.0
<b>Spring onions</b>				
area	ha	n.c.	n.c.	129.4
production	t	n.c.	n.c.	1 747.1
yield	t/ha	n.c.	n.c.	13.5
<b>Sweet corn</b>				
area	ha	1 528.4	1 251.3	1 493.0
production	t	14 165.3	14 423.2	15 893.7
yield	t/ha	9.3	11.5	10.6
<b>Sweet potatoes</b>				
area	ha	452.0	347.9	354.6
production	t	6 348.0	5 240.7	6 051.1
yield	t/ha	14.0	15.1	17.1
<b>Tomatoes</b>				
area	ha	3 609.0	3 424.3	3 394.3
production	t	102 123.5	101 291.5	102 643.3
yield	t/ha	28.3	29.6	30.2
<b>Zucchini</b>				
area	ha	985.4	950.2	1 050.5
production	t	7 978.6	8 733.8	8 813.0
yield	t/ha	8.1	9.2	8.4

	Units	Moreton and Brisbane	Wide Bay-Burnett	Darling Downs	South West	Fitzroy
<b>Asparagus(a)</b>						
area	ha	10.8	152.3	81.7	—	—
production	t	6.1	390.7	451.0	—	—
<b>Beans — French and runner</b>						
area	ha	737.4	910.3	151.1	—	0.3
production	t	2 711.2	4 885.0	284.0	—	1.3
yield	t/ha	3.7	5.4	1.9	—	4.3
<b>Beetroot</b>						
area	ha	714.5	—	1.5	—	0.1
production	t	25 336.7	—	3.2	—	2.1
yield	t/ha	35.5	—	2.1	—	21.0
<b>Broccoli</b>						
area	ha	614.7	23.5	974.8	—	8.1
production	t	3 856.7	67.1	3 715.0	—	3.8
yield	t/ha	6.3	2.9	3.8	—	0.5
<b>Brussel sprouts</b>						
area	ha	—	—	5.3	—	—
production	t	—	—	48.1	—	—
yield	t/ha	—	—	9.1	—	—
<b>Cabbages</b>						
area	ha	268.6	11.9	118.9	—	0.6
production	t	9 725.7	196.7	3 818.5	—	7.3
yield	t/ha	36.2	16.5	32.1	—	12.2
<b>Capsicum, chillies and peppers</b>						
area	ha	76.9	277.9	144.9	—	7.4
production	t	1 083.9	5 557.8	2 475.8	—	99.4
yield	t/ha	14.1	20.0	17.1	—	13.4
<b>Carrots</b>						
area	ha	938.5	0.5	107.0	—	24.9
production	t	25 852.0	1.0	2 973.2	—	592.0
yield	t/ha	27.5	2.0	27.8	—	23.8
<b>Cauliflower</b>						
area	ha	168.9	4.8	217.5	—	1.1
production	t	3 686.3	30.8	5 523.3	—	9.5
yield	t/ha	21.8	6.4	25.4	—	8.6
<b>Celery</b>						
area	ha	96.2	5.0	109.3	—	—
production	t	5 212.7	259.3	7 757.0	—	—
yield	t/ha	54.2	51.9	71.0	—	—
<b>Chinese cabbages</b>						
area	ha	79.6	10.2	42.1	—	—
production	t	1 357.5	292.9	1 520.9	—	—
yield	t/ha	17.1	28.7	36.1	—	—
<b>Cucumber</b>						
area	ha	134.5	103.2	18.2	—	23.9
production	t	1 400.5	2 292.0	134.9	—	359.9
yield	t/ha	10.4	22.2	7.4	—	15.1
<b>Green peas (pod weight)</b>						
area	ha	224.8	47.5	7.7	—	—
production	t	2 111.2	246.1	3.6	—	—
yield	t/ha	9.4	5.2	0.5	—	—
<b>Leeks</b>						
area	ha	0.9	2.4	55.9	—	—
production	t	5.2	10.2	265.5	—	—
yield	t/ha	5.8	4.3	4.7	—	—
<b>Lettuces</b>						
area	ha	915.3	13.3	338.6	—	22.0
production	t	21 593.4	259.7	11 470.1	—	670.4
yield	t/ha	23.6	19.5	33.9	—	30.5
<b>Marrows and squashes</b>						
area	ha	13.8	148.1	6.5	—	7.8
production	t	65.1	609.5	24.7	—	31.1
yield	t/ha	4.7	4.1	3.8	—	4.0

(a) Asparagus is a perennial crop and as such yield cannot be calculated meaningfully.

Units	Central West	Mackay	Northern	Far North	North West
<b>Asparagus(a)</b>					
area	ha	—	—	—	—
production	t	—	—	—	—
<b>Beans — French and runner</b>					
area	ha	—	0.2	2 087.0	38.1
production	t	—	—	9 127.5	167.3
yield	t/ha	—	—	4.4	4.4
<b>Beetroot</b>					
area	ha	—	—	40.0	0.1
production	t	—	—	104.0	2.0
yield	t/ha	—	—	2.6	20.0
<b>Broccoli</b>					
area	ha	—	—	5.0	1.6
production	t	—	—	11.5	3.6
yield	t/ha	—	—	2.3	2.3
<b>Brussel sprouts</b>					
area	ha	—	—	—	—
production	t	—	—	—	—
yield	t/ha	—	—	—	—
<b>Cabbages</b>					
area	ha	—	—	0.3	30.3
production	t	—	—	10.0	782.3
yield	t/ha	—	—	33.3	25.8
<b>Capsicum, chillies and peppers</b>					
area	ha	—	—	587.7	9.8
production	t	—	—	13 663.3	224.3
yield	t/ha	—	—	23.2	22.9
<b>Carrots</b>					
area	ha	—	—	—	2.2
production	t	—	—	—	8.1
yield	t/ha	—	—	—	3.7
<b>Cauliflower</b>					
area	ha	—	2.5	—	0.5
production	t	—	29.4	—	11.2
yield	t/ha	—	11.8	—	22.4
<b>Celery</b>					
area	ha	—	—	—	—
production	t	—	—	—	—
yield	t/ha	—	—	—	—
<b>Chinese cabbages</b>					
area	ha	—	—	—	—
production	t	—	—	—	—
yield	t/ha	—	—	—	—
<b>Cucumber</b>					
area	ha	—	2.1	151.6	12.6
production	t	—	23.0	2 313.2	118.6
yield	t/ha	—	11.0	15.3	9.4
<b>Green peas (pod weight)</b>					
area	ha	—	—	—	—
production	t	—	—	—	—
yield	t/ha	—	—	—	—
<b>Leeks</b>					
area	ha	—	—	—	—
production	t	—	—	—	—
yield	t/ha	—	—	—	—
<b>Lettuces</b>					
area	ha	—	—	6.3	15.6
production	t	—	—	47.3	246.5
yield	t/ha	—	—	7.5	15.8
<b>Marrows and squashes</b>					
area	ha	—	3.6	44.6	1.9
production	t	—	15.1	166.6	7.8
yield	t/ha	—	4.2	3.7	4.1

(a) Asparagus is a perennial crop and as such yield cannot be calculated meaningfully.

	Units	Moreton and Brisbane	Wide Bay-Burnett	Darling Downs	South West	Fitzroy
<b>Melons — rock and cantaloupe</b>						
area	ha	89.1	255.2	172.7	133.7	9.2
production	t	1 964.7	8 999.9	5 243.8	3 261.0	153.7
yield	t/ha	22.1	35.3	30.4	24.4	16.7
<b>Melons — water</b>						
area	ha	664.8	595.9	871.6	32.3	276.5
production	t	9 458.9	10 741.2	11 869.1	484.2	6 708.3
yield	t/ha	14.2	18.0	13.6	15.0	24.3
<b>Melons — other</b>						
area	ha	0.5	4.9	21.0	—	—
production	t	1.5	232.7	42.0	—	—
yield	t/ha	3.0	47.5	2.0	—	—
<b>Mushrooms</b>						
area	ha	11.0	1.5	2.2	—	—
production	t	3 365.9	183.6	619.7	—	—
yield	t/ha	306.0	122.4	281.7	—	—
<b>Onions — white and brown</b>						
area	ha	544.2	6.3	130.1	—	11.0
production	t	18 598.1	172.3	5 180.2	—	443.0
yield	t/ha	34.2	27.3	39.8	—	40.3
<b>Parsley</b>						
area	ha	10.7	2.6	10.8	—	0.1
production	t	186.4	39.0	214.2	—	0.2
yield	t/ha	17.4	15.0	19.8	—	2.0
<b>Potatoes</b>						
area	ha	2 470.5	206.9	615.8	—	16.0
production	t	48 005.0	5 347.5	11 823.0	—	251.0
yield	t/ha	19.4	25.8	19.2	—	15.7
<b>Pumpkins</b>						
area	ha	1 419.3	487.0	189.0	7.0	241.0
production	t	16 285.4	5 644.5	1 803.2	106.0	3 943.3
yield	t/ha	11.5	11.6	9.5	15.1	16.4
<b>Spring onions</b>						
area	ha	120.7	3.1	0.5	—	0.1
production	t	1 577.6	31.0	4.2	—	1.0
yield	t/ha	13.1	10.0	8.4	—	10.0
<b>Sweet corn</b>						
area	ha	518.3	125.5	197.1	—	1.7
production	t	5 795.6	895.1	2 870.0	—	8.5
yield	t/ha	11.2	7.1	14.6	—	5.0
<b>Sweet potatoes</b>						
area	ha	107.9	144.6	2.0	—	15.8
production	t	1 893.5	2 343.7	—	—	110.2
yield	t/ha	17.5	16.2	—	—	7.0
<b>Tomatoes</b>						
area	ha	474.6	734.8	258.4	—	25.2
production	t	13 015.3	27 856.1	7 850.0	—	535.9
yield	t/ha	27.4	37.9	30.4	—	21.3
<b>Zucchini</b>						
area	ha	128.7	697.6	74.0	—	19.7
production	t	1 112.4	5 971.4	518.9	—	135.5
yield	t/ha	8.6	8.6	7.0	—	6.9

	Units	Central West	Mackay	Northern	Far North	North West
<b>Melons — rock and cantaloupe</b>						
area	ha	—	—	663.5	5.1	—
production	t	—	—	18 313.5	27.4	—
yield	t/ha	—	—	27.6	5.4	—
<b>Melons — water</b>						
area	ha	—	3.9	470.2	281.3	—
production	t	—	33.2	13 061.3	3 991.3	—
yield	t/ha	—	8.5	27.8	14.2	—
<b>Melons — other</b>						
area	ha	—	—	77.0	—	—
production	t	—	—	596.0	—	—
yield	t/ha	—	—	7.7	—	—
<b>Mushrooms</b>						
area	ha	—	—	3.3	—	—
production	t	—	—	229.2	—	—
yield	t/ha	—	—	69.5	—	—
<b>Onions — white and brown</b>						
area	ha	—	—	1.0	17.8	—
production	t	—	—	20.0	520.0	—
yield	t/ha	—	—	20.0	29.2	—
<b>Parsley</b>						
area	ha	—	—	0.4	0.2	—
production	t	—	—	7.3	0.3	—
yield	t/ha	—	—	18.3	1.5	—
<b>Potatoes</b>						
area	ha	—	1.0	376.2	985.6	—
production	t	—	6.5	12 224.2	26 187.9	—
yield	t/ha	—	6.5	32.5	26.6	—
<b>Pumpkins</b>						
area	ha	—	18.2	561.0	411.9	—
production	t	—	219.1	8 553.9	6 710.4	—
yield	t/ha	—	12.0	15.2	16.3	—
<b>Spring onions</b>						
area	ha	—	—	5.0	—	—
production	t	—	—	133.3	—	—
yield	t/ha	—	—	26.7	—	—
<b>Sweet corn</b>						
area	ha	—	5.0	640.1	5.3	—
production	t	—	50.0	6 239.0	35.5	—
yield	t/ha	—	10.0	9.7	6.7	—
<b>Sweet potatoes</b>						
area	ha	—	0.1	11.6	72.6	—
production	t	—	0.8	349.0	1 353.9	—
yield	t/ha	—	8.0	30.1	18.6	—
<b>Tomatoes</b>						
area	ha	—	4.0	1 869.5	27.8	—
production	t	—	123.2	52 824.5	438.3	—
yield	t/ha	—	30.8	28.3	15.8	—
<b>Zucchini</b>						
area	ha	—	20.0	99.3	11.2	—
production	t	—	235.0	794.0	45.7	—
yield	t/ha	—	11.8	8.0	4.1	—

	1993-94	1994-95	1995-96p
	\$m	\$m	\$m
Asparagus	3.2	4.1	5.6
Beans — French and runner	25.2	25.4	29.5
Beetroot	2.9	3.7	4.3
Broccoli	13.2	12.8	13.2
Cabbages and brussel sprouts	4.6	6.5	8.4
Capsicum, chillies and peppers	29.7	27.2	29.4
Carrots	9.4	16.1	12.7
Cauliflower	4.8	4.4	4.3
Celery	8.1	5.3	6.1
Cucumbers	6.9	6.7	8.0
Green peas (pod weight)	1.5	0.6	0.4
Leeks	0.6	0.6	0.6
Lettuces	25.5	22.8	24.8
Marrows and squashes	1.7	2.5	1.6
Melons — rock and cantaloupe	24.0	26.0	26.2
Melons — water	19.0	14.8	13.9
Mushrooms	11.4	13.7	15.8
Onions — white and brown	21.8	13.7	19.3
Parsley	0.9	0.9	1.3
Potatoes	37.7	47.3	53.3
Pumpkins	9.7	11.5	10.6
Sweet corn	9.5	11.0	10.2
Sweet potatoes	4.3	7.7	7.6
Tomatoes	109.1	102.5	116.2
Zucchini	8.9	9.6	12.8
Other vegetables	19.7	17.0	16.9
<b>Total</b>	<b>413.3</b>	<b>414.4</b>	<b>453.0</b>



# 33

## AREA OF NURSERIES, CUT FLOWERS AND CULTIVATED TURF, Year ended 31 March 1996

Statistical division	Nurseries	Cut flowers	Cultivated turf	Total
	ha	ha	ha	ha
Moreton and Brisbane	801.7	249.2	1 782.8	2 833.7
Wide Bay-Burnett	115.3	35.5	170.2	321.0
Darling Downs	29.4	284.1	59.5	373.0
South West	0.5	25.6	—	26.1
Fitzroy	35.1	25.9	61.5	122.5
Central West	0.1	—	—	0.1
Mackay	47.4	6.8	49.0	103.2
Northern	23.5	2.4	37.3	63.2
Far North	180.9	45.7	49.7	276.3
North West	—	7.0	—	7.0
<b>Queensland</b>				
1996	<b>1 233.9</b>	<b>682.2</b>	<b>2 210.0</b>	<b>4 126.1</b>
1995	<b>1 309.9</b>	<b>769.8</b>	<b>2 167.1</b>	<b>4 246.8</b>

# 34

## AREA OF SHADE AND GLASSHOUSES, Year ended 31 March 1996

Statistical division	NURSERY.....		FLOWERS.....		TOTAL.....	
	Shadehouse	Glasshouse	Shadehouse	Glasshouse	Shadehouse	Glasshouse
	square metres	square metres	square metres	square metres	square metres	square metres
Moreton and Brisbane	872 655	401 892	113 062	133 787	985 717	535 679
Wide Bay-Burnett	52 428	11 505	510	23 030	52 938	34 535
Darling Downs	19 747	9 282	16 274	8 884	36 021	18 166
South West	230	36	—	—	230	36
Fitzroy	14 962	609	650	400	15 612	1 009
Central West	—	—	—	—	—	—
Mackay	28 361	22 210	23 500	26 000	51 861	48 210
Northern	22 492	54	4 000	—	26 492	54
Far North	168 885	56 746	82 966	29 543	251 851	86 289
North West	—	—	—	—	—	—
<b>Queensland</b>	<b>1 179 760</b>	<b>502 334</b>	<b>240 962</b>	<b>221 644</b>	<b>1 420 722</b>	<b>723 978</b>

<i>Statistical division</i>	<i>Value of plant material purchased</i> \$'000	<i>Sales of greenstock(a)</i> \$'000	<i>Gross receipts from sales(b)</i> \$'000
Moreton and Brisbane	17 235.3	85 380.7	10 622.8
Wide Bay-Burnett	476.3	3 964.4	1 055.1
Darling Downs	963.7	3 677.9	2 649.9
South West	52.8	39.4	95.3
Fitzroy	161.0	2 254.4	84.3
Central West	—	—	—
Mackay	380.8	2 052.8	957.0
Northern	417.4	1 749.0	25.1
Far North	1 113.5	6 740.8	1 922.5
North West	2.0	—	1.5
<b>Queensland</b>	<b>20 802.9</b>	<b>105 859.4</b>	<b>17 413.5</b>

(a) Sales of greenstock from nursery activity (excludes sales of cut flowers and cultivated turf).

(b) Gross receipts from sales of cut flowers only.

# 36

## MEAT CATTLE NUMBERS, At 31 March 1996

<i>Statistical division</i>	<i>Bulls and bull calves intended for service</i>	<i>Cows and heifers one year and over</i>	<i>Heifers and other calves under one year</i>	<i>Other cattle one year and over</i>	<i>Total meat cattle</i>	<i>Percentage of total meat cattle herd</i>
	'000	'000	'000	'000	'000	%
Moreton and Brisbane	8.3	168.5	76.0	116.1	368.9	3.7
Wide Bay-Burnett	18.1	414.8	195.5	243.0	871.4	8.8
Darling Downs	28.5	561.1	324.0	485.1	1 398.7	14.1
South West	21.7	516.6	270.0	268.1	1 076.4	10.8
Fitzroy	38.7	775.5	375.8	487.9	1 678.0	16.9
Central West	14.4	336.4	166.3	199.7	716.9	7.2
Mackay	19.2	392.6	178.1	259.5	849.5	8.6
Northern	20.3	406.8	165.0	201.6	793.8	8.0
Far North	17.6	380.0	118.4	173.4	689.4	6.9
North West	34.9	822.4	304.3	323.7	1 485.4	15.0
<b>Queensland</b>						
<b>1996</b>	<b>221.8</b>	<b>4 775.0</b>	<b>2 173.5</b>	<b>2 758.0</b>	<b>9 928.3</b>	<b>100.0</b>
<b>1995</b>	<b>220.2</b>	<b>4 522.1</b>	<b>2 107.3</b>	<b>2 839.5</b>	<b>9 689.1</b>	<b>100.0</b>
<b>1994</b>	<b>217.8</b>	<b>4 884.5</b>	<b>1 867.5</b>	<b>2 686.3</b>	<b>9 656.1</b>	<b>100.0</b>

# 37

## ESTABLISHMENTS WITH MEAT CATTLE, At 31 March 1996

<i>Statistical division</i>	<i>Bulls and bull calves intended for service</i>	<i>Cows and heifers one year and over</i>	<i>Heifers and other calves under one year</i>	<i>Other cattle one year and over</i>	<i>Total establishments with meat cattle</i>	<i>Percentage of establishments with meat cattle</i>
	no.	no.	no.	no.	no.	%
Moreton and Brisbane	2 344	2 631	2 455	2 189	3 102	15.3
Wide Bay-Burnett	3 111	3 494	3 252	2 975	3 958	19.5
Darling Downs	3 989	4 503	4 247	3 912	5 179	25.6
South West	1 364	1 432	1 355	1 246	1 504	7.4
Fitzroy	2 219	2 428	2 286	2 113	2 631	13.0
Central West	534	579	544	486	616	3.0
Mackay	938	1 010	954	914	1 096	5.4
Northern	598	641	605	587	681	3.4
Far North	735	846	773	848	1 012	5.0
North West	414	443	409	421	472	2.3
<b>Queensland</b>						
<b>1996</b>	<b>16 246</b>	<b>18 007</b>	<b>16 880</b>	<b>15 691</b>	<b>20 251</b>	<b>100.0</b>
<b>1995</b>	<b>16 702</b>	<b>18 461</b>	<b>17 426</b>	<b>15 591</b>	<b>20 902</b>	<b>100.0</b>
<b>1994</b>	<b>16 850</b>	<b>19 056</b>	<b>17 006</b>	<b>14 948</b>	<b>21 480</b>	<b>100.0</b>

## NUMBER OF ESTABLISHMENTS AND MEAT CATTLE BY HERD SIZE, At 31 March

Herd size	1995 .....		1996 .....	
	<i>Establishments</i>	<i>Percentage of establishments with meat cattle</i>	<i>Establishments</i>	<i>Percentage of establishments with meat cattle</i>
	no.	%	no.	%
1-29	3 424	16.4	2 620	12.9
30-49	2 107	10.1	2 056	10.2
50-69	1 917	9.2	1 900	9.4
70-99	1 910	9.1	2 050	10.1
100-149	2 218	10.6	2 221	11.0
150-199	1 417	6.8	1 408	7.0
200-299	1 681	8.0	1 765	8.7
300-399	1 122	5.4	1 079	5.3
400-499	751	3.6	785	3.9
500-699	1 084	5.2	1 075	5.3
700-999	975	4.7	965	4.8
1 000-1 499	897	4.3	902	4.5
1 500-1 999	498	2.4	484	2.4
2 000-4 999	673	3.2	709	3.5
5 000-9 999	157	0.8	151	0.7
10 000 and over	71	~0.3	81	0.4
<b>Total</b>	<b>20 902</b>	<b>100.0</b>	<b>20 251</b>	<b>100.0</b>

Herd size	1995.....		1996.....	
	<i>Number of meat cattle</i>	<i>Percentage of total meat cattle</i>	<i>Number of meat cattle</i>	<i>Percentage of total meat cattle</i>
	'000	%	'000	%
1-29	50.8	0.5	41.3	0.4
30-49	81.2	0.8	79.8	0.8
50-69	112.4	1.2	111.7	1.1
70-99	159.1	1.6	170.0	1.7
100-149	269.2	2.8	269.5	2.7
150-199	244.0	2.5	242.2	2.4
200-299	406.9	4.2	428.9	4.3
300-399	387.2	4.0	371.9	3.7
400-499	334.0	3.4	348.9	3.5
500-699	639.9	6.6	631.7	6.4
700-999	813.4	8.4	806.3	8.1
1 000-1 499	1 092.4	11.3	1 097.5	11.1
1 500-1 999	851.8	8.8	832.9	8.4
2 000-4 999	1 955.9	20.2	2 076.9	20.9
5 000-9 999	1 055.7	10.9	1 000.8	10.1
10 000 and over	1 235.3	12.7	1 417.9	14.3
<b>Total</b>	<b>9 689.1</b>	<b>100.0</b>	<b>9 928.3</b>	<b>100.0</b>

Statistical division	Cows in milk and dry	Other milk cattle	Total milk cattle(a)	Percentage of total milk cattle herd
	'000	'000	'000	%
Moreton and Brisbane	63.2	31.6	94.8	33.1
Wide Bay-Burnett	41.0	21.8	62.8	22.0
Darling Downs	45.1	24.3	69.4	24.3
South West	1.9	0.5	2.4	0.8
Fitzroy	5.8	2.7	8.5	3.0
Central West	0.2	0.1	0.3	0.1
Mackay	4.4	2.0	6.5	2.3
Northern	0.4	0.1	0.5	0.2
Far North	27.4	13.6	41.0	14.3
North West	—	—	—	—
<b>Queensland</b>				
1996	189.4	96.7	286.1	100.0
1995	188.6	95.9	284.5	100.0
1994	188.7	97.7	286.4	100.0

(a) Excludes house cows.

Statistical division	Cows in milk and dry	Other milk cattle	Total establishments with milk cattle	Percentage of establishments with milk cattle
	no.	no.	no.	%
Moreton and Brisbane	619	585	659	28.9
Wide Bay-Burnett	435	417	479	21.0
Darling Downs	623	603	702	30.8
South West	24	16	31	1.4
Fitzroy	92	79	107	4.7
Central West	6	7	8	0.4
Mackay	50	46	55	2.4
Northern	14	8	14	0.6
Far North	215	206	226	9.9
North West	1	—	1	—
<b>Queensland</b>				
1996	2 079	1 967	2 282	100.0
1995	2 022	1 974	2 148	100.0
1994	1 895	1 998	2 070	100.0

(a) Excludes establishments with house cows only.

## NUMBER OF ESTABLISHMENTS AND MILK CATTLE BY HERD SIZE, At 31 March(a)

Herd size	1995 .....		1996 .....	
	Establishments	Percentage of establishments with milk cattle	Establishments	Percentage of establishments with milk cattle
	no.	%	no.	%
1-49	443	20.6	598	26.2
50-99	405	18.9	404	17.7
100-149	509	23.7	493	21.6
150-199	365	17.0	341	14.9
200-249	192	8.9	190	8.3
250-299	102	4.7	109	4.8
300-349	61	2.8	67	2.9
350-399	33	1.5	34	1.5
400-499	25	1.2	31	1.4
500 and over	13	0.6	15	0.7
<b>Total</b>	<b>2 148</b>	<b>100.0</b>	<b>2 282</b>	<b>100.0</b>

Herd size	1995.....		1996.....	
	Number of milk cattle	Percentage of total milk cattle	Number of milk cattle	Percentage of total milk cattle
	'000	%	'000	%
1-49	9.5	3.3	9.4	3.3
50-99	30.3	10.7	30.1	10.5
100-149	62.1	21.8	60.6	21.2
150-199	62.2	21.9	58.2	20.3
200-249	42.4	14.9	41.9	14.6
250-299	27.3	9.6	29.3	10.2
300-349	19.3	6.8	21.2	7.4
350-399	12.1	4.3	12.5	4.4
400-499	10.8	3.8	13.2	4.6
500 and over	8.4	3.0	9.9	3.5
<b>Total</b>	<b>284.5</b>	<b>100.0</b>	<b>286.1</b>	<b>100.0</b>

(a) Excludes establishments with house cows only.

# 42

## NUMBER OF SHEEP AND LAMBS, At 31 March 1996

Statistical division	Breeding ewes (1 year and over)	Lambs and hoggets (under 1 year)	All other sheep	Total sheep and lambs	Percentage of total sheep flock
	'000	'000	'000	'000	%
Moreton and Brisbane	9.6	7.1	2.4	19.1	0.2
Wide Bay-Burnett	1.1	0.7	0.5	2.3	—
Darling Downs	518.0	304.4	718.4	1 540.9	14.4
South West	1 800.9	1 103.3	1 561.3	4 465.5	41.7
Fitzroy	8.5	2.3	6.2	17.0	0.2
Central West	1 816.7	597.8	1 333.7	3 748.2	35.0
Mackay	0.2	0.1	0.2	0.5	—
Northern	0.1	—	6.0	6.2	0.1
Far North	—	—	—	0.1	—
North West	401.5	118.4	387.6	907.5	8.5
<b>Queensland</b>					
1996	4 556.6	2 134.2	4 016.4	10 707.2	100.0
1995	n.c.	2 059.9	n.c.	11 577.2	100.0
1994	n.c.	1 630.8	n.c.	11 547.2	100.0

(a) Sheep one year and over including rams, ewes and wethers.

# 43

## ESTABLISHMENTS WITH SHEEP AND LAMBS, At 31 March 1996

Statistical division	Breeding ewes (1 year and over)	Lambs and hoggets (under 1 year)	All other sheep	Total sheep and lambs	Percentage of establishments with sheep and lambs
	no.	no.	no.	no.	%
Moreton and Brisbane	34	24	35	39	1.4
Wide Bay-Burnett	43	34	45	54	1.9
Darling Downs	848	742	964	1 039	37.5
South West	805	728	880	918	33.1
Fitzroy	22	13	21	27	1.0
Central West	467	413	513	527	19.0
Mackay	3	2	2	3	0.1
Northern	3	2	4	7	0.3
Far North	5	3	3	5	0.2
North West	127	106	147	151	5.5
<b>Queensland</b>					
1996	2 357	2 087	2 614	2 770	100.0
1995	n.c.	2 040	n.c.	2 868	100.0
1994	n.c.	1 850	n.c.	2 905	100.0

(a) Sheep one year and over including rams, ewes and wethers.

Flock size	1995 .....		1996 .....	
	Establishments	Percentage of establishments with sheep and lambs	Establishments	Percentage of establishments with sheep and lambs
	no.	%	no.	%
1-499	751	26.2	690	24.9
500-999	240	8.4	226	8.2
1 000-1 499	196	6.8	192	6.9
1 500-1 999	145	5.1	167	6.0
2 000-2 499	131	4.6	139	5.0
2 500-2 999	126	4.4	130	4.7
3 000-3 999	245	8.5	229	8.3
4 000-4 999	201	7.0	208	7.5
5 000-5 999	166	5.8	202	7.3
6 000-6 999	132	4.6	145	5.2
7 000-7 999	98	3.4	88	3.2
8 000-8 999	101	3.5	75	2.7
9 000-9 999	57	2.0	56	2.0
10 000 and over	279	9.7	223	8.1
<b>Total</b>	<b>2 868</b>	<b>100.0</b>	<b>2 770</b>	<b>100.0</b>

Flock size	1995 .....		1996 .....	
	Number of sheep and lambs	Percentage of total sheep and lambs	Number of sheep and lambs	Percentage of total sheep and lambs
	'000	%	'000	%
1-499	94.6	0.8	98.3	0.9
500-999	171.7	1.5	170.3	1.6
1 000-1 499	238.1	2.1	236.5	2.2
1 500-1 999	250.5	2.2	288.8	2.7
2 000-2 499	290.3	2.5	308.5	2.9
2 500-2 999	341.7	3.0	351.7	3.3
3 000-3 999	847.5	7.3	782.4	7.3
4 000-4 999	900.0	7.8	920.5	8.6
5 000-5 999	893.8	7.7	1 094.8	10.2
6 000-6 999	845.3	7.3	928.3	8.7
7 000-7 999	724.8	6.3	651.9	6.1
8 000-8 999	843.1	7.3	628.8	5.9
9 000-9 999	531.6	4.6	530.4	5.0
10 000 and over	4 604.1	39.8	3 716.0	34.7
<b>Total</b>	<b>11 577.2</b>	<b>100.0</b>	<b>10 707.2</b>	<b>100.0</b>



## 45

## LAMBING, Year ended 31 March 1996

Statistical division	Ewes mated(a)	Lambs marked	Lamb marking ratio(b)	Ewes expected to lamb year ended 31 March 1997(c)
	'000	000	%	'000
Moreton and Brisbane	11.5	7.9	68.7	7.6
Wide Bay-Burnett	0.8	0.7	87.5	0.9
Darling Downs	435.6	312.3	71.7	435.2
South West	1 615.7	1 111.8	68.8	1 538.2
Fitzroy	2.1	0.5	23.8	3.8
Central West	1 580.2	700.3	44.3	1 513.3
Mackay	0.2	0.1	50.0	0.1
Northern	—	—	—	—
Far North	—	—	—	—
North West	378.6	151.3	40.0	330.9
<b>Queensland</b>				
1996	4 024.8	2 284.9	56.8	3 830.0
1995	4 137.9	2 238.9	54.1	4 186.5
1994	3 601.0	1 897.7	52.7	4 292.1

(a) Ewes mated to produce lambs marked in the season shown.

(b) Lambs marked as a proportion of ewes mated to produce lambs.

(c) Forecast made at the end of the 1995-96 season.

## 46

## PIG NUMBERS(a) AND NUMBER OF ESTABLISHMENTS, At 31 March 1996

Statistical division	Total pigs	Percentage of total pigs	Total establishments	Percentage of total establishments with pigs
	'000	%	no.	%
Moreton and Brisbane	38.2	6.3	134	14.1
Wide Bay-Burnett	193.1	32.0	264	27.7
Darling Downs	303.3	50.3	402	42.2
South West	3.4	0.6	26	2.7
Fitzroy	42.9	7.1	56	5.9
Central West	0.1	—	5	0.5
Mackay	8.0	1.3	16	1.7
Northern	5.2	0.9	20	2.1
Far North	8.9	1.5	23	2.4
North West	—	—	7	0.7
<b>Queensland</b>				
1996	603.0	100.0	953	100.0
1995	643.6	100.0	1 040	100.0
1994	681.9	100.0	1 081	100.0

(a) Includes suckers, weaners, growers etc.

## NUMBER OF ESTABLISHMENTS AND PIGS BY HERD SIZE(a), At 31 March

Herd size	1995 .....		1996 .....	
	Establishments	Percentage of establishments with pigs	Establishments	Percentage of establishments with pigs
	no.	%	no.	%
1-9	205	19.7	152	15.9
10-19	94	9.0	105	11.0
20-29	63	6.1	65	6.8
30-39	39	3.8	42	4.4
40-49	21	2.0	24	2.5
50-69	54	5.2	47	4.9
70-99	45	4.3	47	4.9
100-149	61	5.9	49	5.1
150-199	39	3.8	37	3.9
200-299	75	7.2	64	6.7
300-499	89	8.6	78	8.2
500-699	64	6.2	51	5.4
700-999	65	6.3	58	6.1
1 000 and over	126	12.1	134	14.1
<b>Total</b>	<b>1 040</b>	<b>100.0</b>	<b>953</b>	<b>100.0</b>

Herd size	1995 .....		1996 .....	
	Number of pigs	Percentage of total pigs	Number of pigs	Percentage of total pigs
	'000	%	'000	%
1-9	0.8	0.1	0.7	0.1
10-19	1.3	0.2	1.4	0.2
20-29	1.4	0.2	1.5	0.3
30-39	1.3	0.2	1.4	0.2
40-49	0.9	0.1	1.0	0.2
50-69	3.1	0.5	2.7	0.5
70-99	3.6	0.6	3.8	0.6
100-149	7.4	1.1	6.1	1.0
150-199	6.6	1.0	6.2	1.0
200-299	17.9	2.8	15.3	2.5
300-499	34.0	5.3	30.6	5.1
500-699	37.4	5.8	29.1	4.8
700-999	56.2	8.7	49.4	8.2
1 000 and over	471.8	73.3	453.8	75.3
<b>Total</b>	<b>643.6</b>	<b>100.0</b>	<b>603.0</b>	<b>100.0</b>

(a) Includes suckers, weaners, growers etc.

## LAYERS .....

## MEAT CHICKENS.....

Statistical division	Hens for egg	Replacement	Breeding	Grown on	Grown on	Breeding
	production for human consumption	stock	stock	contract	own account	stock
	'000	'000	'000	'000	'000	'000
Moreton and Brisbane	659.2	149.0	63.7	6 022.4	1 726.9	452.7
Wide Bay-Burnett	8.9	0.4	—	0.8	3.8	—
Darling Downs	777.9	348.8	13.8	278.0	1.8	60.0
South West	3.1	0.4	—	—	—	—
Fitzroy	117.3	51.8	—	—	—	—
Central West	0.3	—	—	—	0.1	—
Mackay	58.6	31.0	—	—	—	—
Northern	137.5	60.5	—	—	0.1	—
Far North	93.4	39.4	—	224.0	—	—
North West	—	—	—	—	—	—
<b>Queensland</b>	<b>1 856.1</b>	<b>681.3</b>	<b>77.4</b>	<b>6 525.2</b>	<b>1 732.7</b>	<b>512.8</b>

## OTHER POULTRY.....

Statistical division	Ducks	Turkeys
	'000	'000
Moreton and Brisbane	0.1	—
Wide Bay-Burnett	—	0.2
Darling Downs	1.1	—
South West	—	—
Fitzroy	—	—
Central West	—	—
Mackay	—	—
Northern	—	—
Far North	0.1	—
North West	—	—
<b>Queensland</b>	<b>1.2</b>	<b>0.2</b>

## LAYERS .....

## EGGS.....

<i>Statistical division</i>	<i>Hens for egg production for human consumption</i>	<i>Replacement stock</i>	<i>Day old chicks sold</i>	<i>Breeding stock</i>	<i>Production of eggs for human consumption</i>
	'000	'000	'000	'000	'000 dozen
Moreton and Brisbane	560.9	82.1	0.2	116.5	8 754.8
Wide Bay-Burnett	9.4	0.8	—	—	220.4
Darling Downs	399.0	222.7	—	9.7	14 931.9
South West	0.5	—	—	—	26.5
Fitzroy	51.8	—	—	—	1 551.1
Central West	0.2	—	—	—	3.3
Mackay	55.3	—	—	—	1 269.4
Northern	76.8	14.0	—	—	594.1
Far North	50.3	—	—	—	1 158.3
North West	—	—	—	—	—
<b>Queensland</b>	<b>1 204.1</b>	<b>319.6</b>	<b>0.2</b>	<b>126.2</b>	<b>28 509.7</b>

## MEAT CHICKENS.....

## OTHER POULTRY.....PROCESSED POULTRY SOLD

<i>Statistical division</i>	<i>Grown on contract</i>	<i>Grown on own account</i>	<i>Day old chicks sold</i>	<i>Breeding stock</i>	<i>Ducks</i>	<i>Turkeys</i>	<i>Reared on holding</i>	<i>Other processed poultry sold</i>
	'000	'000	'000	'000	'000	'000	'000	'000
Moreton and Brisbane	37 994.3	11 987.9	44 340.6	434.7	—	—	3 804.0	2.2
Wide Bay-Burnett	2.4	29.5	—	—	—	—	31.0	0.0
Darling Downs	278.0	—	—	120.0	0.3	—	452.4	31.9
South West	—	—	—	—	—	—	—	—
Fitzroy	—	—	—	—	—	—	—	9.5
Central West	—	0.4	—	—	—	—	—	—
Mackay	—	—	—	—	—	—	—	1.5
Northern	—	0.1	—	—	—	—	—	—
Far North	850.2	0.1	—	—	0.1	—	0.6	—
North West	—	—	—	—	—	—	—	—
<b>Queensland</b>	<b>39 124.9</b>	<b>12 017.9</b>	<b>44 340.6</b>	<b>554.7</b>	<b>0.4</b>	<b>—</b>	<b>4 288.0</b>	<b>45.0</b>

Statistical division	ESTABLISHMENTS .....		LIVESTOCK .....	
	Deer no.	Horses for breeding(a) no.	Deer no.	Horses for breeding(a) no.
Moreton and Brisbane	45	508	5 385	4 798
Wide Bay-Burnett	20	510	5 986	2 998
Darling Downs	25	635	2 587	6 749
South West	1	178	13	1 422
Fitzroy	7	411	1 016	3 504
Central West	—	87	—	1 064
Mackay	3	173	459	1 652
Northern	4	138	108	1 683
Far North	5	138	801	1 615
North West	—	92	—	2 060
<b>Queensland</b>				
1996	<b>110</b>	<b>2 870</b>	<b>16 355</b>	<b>27 545</b>
1995	<b>121</b>	<b>1 903</b>	<b>17 153</b>	<b>16 553</b>
1994	<b>133</b>	<b>1 880</b>	<b>17 995</b>	<b>20 794</b>

(a) Comprises horses on establishments with agricultural activity.

Statistical division	Dairy bulls	Beef bulls	Other cattle	Pigs
	'000	'000	'000	'000
Moreton and Brisbane	0.3	1.9	196.9	76.7
Wide Bay-Burnett	0.2	3.0	298.6	344.1
Darling Downs	0.2	5.4	741.3	546.4
South West	—	1.7	272.1	6.7
Fitzroy	—	7.6	455.7	77.4
Central West	—	1.4	258.4	—
Mackay	—	2.2	196.6	16.5
Northern	—	1.8	149.6	8.8
Far North	0.2	1.5	135.8	18.1
North West	—	2.9	391.0	—
<b>Queensland</b>	<b>1.1</b>	<b>29.5</b>	<b>3 096.0</b>	<b>1 094.5</b>

Statistical division	Lambs and hoggets	All other sheep	Horses	Deer
	'000	'000	'000	'000
Moreton and Brisbane	0.6	0.6	0.7	1.0
Wide Bay-Burnett	0.3	0.1	0.5	1.5
Darling Downs	128.5	266.1	0.8	0.3
South West	163.1	733.3	0.1	—
Fitzroy	6.5	0.6	0.4	0.2
Central West	98.0	865.9	0.1	—
Mackay	0.1	—	0.2	—
Northern	—	1.6	0.1	—
Far North	—	—	0.1	0.1
North West	23.9	194.3	0.2	—
<b>Queensland</b>	<b>421.0</b>	<b>2 062.5</b>	<b>3.2</b>	<b>3.0</b>

	Units	1994	1995	1996
<b>Number of livestock slaughtered(a)(b)</b>				
Cattle	'000	2 845.4	2 595.2	2 371.3
Calves	'000	160.5	126.6	95.0
Chickens	'000	53.3	57.0	56.0
Lambs	'000	711.4	625.4	706.0
Pigs	'000	1 207.5	1 169.7	1 105.8
Sheep	'000	1 203.1	840.2	693.2
<b>Meat produced(a)(c)</b>				
Beef	tonnes	754 026.9	711 004.5	639 748.9
Chicken	tonnes	69 791.3	77 853.1	72 649.4
Lamb	tonnes	11 785.3	10 947.5	12 557.3
Mutton	tonnes	24 014.4	16 887.6	13 561.3
Pig	tonnes	84 429.7	83 396.2	79 560.2
Veal	tonnes	7 428.4	5 012.7	3 872.9
Whole milk intake by factories(d)	million litres	753	743	755
<b>Wool(e)</b>				
Brokers and dealer receivals of taxable wool	tonnes	54 736.6	54 510.0	45 943.6
Eggs produced	'000 dozen	n.c.	n.c.	28 509.7
Honey produced	tonnes	2 919.2	2 743.4	3 212.4

(a) Source: ABS "Monthly Livestock Products" publication, Catalogue No. 7215.0.

(b) Includes estimates of animals slaughtered on farms and country butchers.

(c) Dressed carcass weight, excluding offal.

(d) Source: Australian Dairy Corporation.

(e) Sources: National Council of Wool Selling Brokers of Australia and ABS Wool Brokers and Dealers Collection.

# 53

## GROSS VALUE OF LIVESTOCK PRODUCTS AND OTHER DISPOSALS

	1993-94	1994-95	1995-96p
	\$m	\$m	\$m
<b>Livestock slaughterings(a)</b>			
Cattle and calves	r1 829.0	1 592.6	1 215.6
Pigs	165.4	160.3	155.5
Poultry	128.4	141.6	143.3
Sheep and lambs(b)	28.7	r24.0	37.5
Other	0.1	0.1	0.2
<b>Total</b>	<b>r2 151.6</b>	<b>r1 918.7</b>	<b>1 552.1</b>
<b>Wool</b>			
Shorn and crutched	177.3	235.8	180.1
Other(c)	2.3	r4.4	4.0
<b>Total</b>	<b>179.6</b>	<b>r240.2</b>	<b>184.2</b>
<b>Production of milk</b>			
Human consumption	182.3	84.9	211.1
Manufacturing	100.1	205.0	107.9
<b>Total</b>	<b>282.4</b>	<b>289.9</b>	<b>319.0</b>
Eggs	47.6	48.0	66.1
Honey and beeswax	3.8	3.7	5.5

(a) Includes net exports of livestock.

(b) Excludes value of wool on skins.

(c) Includes dead and fellmongered wool and wool on skins.

# 54

## BEEKEEPING, SUMMARY STATISTICS, Years ended 30 June

	Units	1994	1995	1996p
<b>Number of apiarists</b>	no.	363	269	267
<b>Beehives</b>				
Productive(a)	no.	57 275	47 410	52 998
Unproductive	no.	45 041	37 100	31 913
<b>Total</b>	<b>no.</b>	<b>102 316</b>	<b>84 510</b>	<b>84 911</b>
<b>Honey produced</b>				
Quantity	kg	2 919 212	2 743 416	3 212 358
Average production(b)	kg/hive	51.0	57.9	48.0
<b>Beeswax produced</b>	kg	55 592	50 425	64 741

(a) Beehives from which honey was taken.

(b) Average production per productive beehive.



## POULTRY 0141-0142 .....

## FRUIT 0114-0119 .....

Items	1993-94		1994-95		1993-94		1994-95	
	\$m	SE %	\$m	SE %	\$m	SE %	\$m	SE %
Sales from crops	0.1	70	n.p.	n.p.	323.8	11	375.5	19
Sales from livestock	30.3	1	n.p.	n.p.	3.0	51	1.9	57
Sales from livestock products	38.7	26	n.p.	n.p.	3.8	*	—	—
Turnover	102.5	7	n.p.	n.p.	342.1	12	423.5	18
Purchases and selected expenses	64.6	13	n.p.	n.p.	188.5	12	221.0	20
Value added(a)	37.4	22	n.p.	n.p.	153.0	14	203.9	17
Adjusted value added(a)	33.2	25	n.p.	n.p.	135.2	15	179.9	17
Gross operating surplus(a)	20.5	43	n.p.	n.p.	72.3	24	103.4	19
Interest paid	3.4	36	n.p.	n.p.	13.9	20	20.3	23
Cash operating surplus(b)	17.5	45	n.p.	n.p.	59.1	29	84.0	24
Gross indebtedness	46.2	36	n.p.	n.p.	131.1	16	266.5	19
Total net capital expenditure	2.5	54	n.p.	n.p.	31.9	28	36.9	24

## VEGETABLES 0113 .....

## GRAIN 0121 .....

Items	1993-94		1994-95		1993-94		1994-95	
	\$m	SE %	\$m	SE %	\$m	SE %	\$m	SE %
Sales from crops	385.4	10	439.8	16	199.9	28	226.9	16
Sales from livestock	12.5	82	16.4	75	21.4	38	27.0	32
Sales from livestock products	9.2	*	4.7	*	6.1	59	3.3	39
Turnover	431.8	13	481.1	17	257.7	26	297.3	16
Purchases and selected expenses	243.5	17	277.2	23	145.0	26	151.4	17
Value added(a)	190.4	13	210.3	16	106.6	29	158.7	16
Adjusted value added(a)	169.5	13	193.8	16	90.6	31	143.1	17
Gross operating surplus(a)	98.6	22	102.0	23	76.0	35	128.3	18
Interest paid	17.6	24	11.3	43	19.2	33	16.8	21
Cash operating surplus(b)	77.8	29	81.4	33	63.1	38	101.3	18
Gross indebtedness	242.1	15	183.8	33	243.0	31	354.3	21
Total net capital expenditure	30.4	23	39.9	32	28.3	41	40.6	30

(a) Includes an estimate for the value of the increase in livestock.

(b) Excludes an estimate for the value of the increase in livestock.

NOTE: Standard error of change between two successive years is 1.3 times the standard error of the estimate (except for the all industries estimate where it is equal to the standard error of the estimate). Standard error of change between estimates two years apart could be as high as 1.8 times the standard error of the estimate (except for the all industries estimate where it could be 1.5 times the standard error of the estimate).

## GRAIN-SHEEP/BEEF CATTLE 0122 .....

## SHEEP-BEEF CATTLE 0123 .....

Items	1993-94		1994-95		1993-94		1994-95	
	\$m	SE %	\$m	SE %	\$m	SE %	\$m	SE %
Sales from crops	100.0	29	84.3	21	0.5	87	12.9	86
Sales from livestock	144.0	19	88.9	20	70.8	21	48.5	17
Sales from livestock products	18.3	57	8.2	39	89.7	15	108.8	16
Turnover	287.9	22	227.9	22	177.7	13	196.1	15
Purchases and selected expenses	198.1	24	130.1	21	93.6	18	122.1	16
Value added(a)	116.2	27	118.2	22	78.2	33	112.5	21
Adjusted value added(a)	91.4	29	103.8	23	58.5	41	96.6	22
Gross operating surplus(a)	71.9	31	92.9	23	44.3	53	83.7	24
Interest paid	27.4	27	22.7	24	15.9	25	17.9	31
Cash operating surplus(b)	18.3	**	49.5	44	37.1	33	27.2	26
Gross indebtedness	374.4	27	238.5	22	226.7	29	185.0	26
Total net capital expenditure	22.8	28	32.6	39	6.8	41	16.8	31

## SHEEP 0124 .....

## BEEF CATTLE 0125 .....

Items	1993-94		1994-95		1993-94		1994-95	
	\$m	SE %	\$m	SE %	\$m	SE %	\$m	SE %
Sales from crops	0.9	92	0.4	57	40.1	24	54.0	24
Sales from livestock	13.2	69	20.5	64	1 312.2	8	1 288.1	6
Sales from livestock products	45.5	15	72.8	42	16.0	61	11.9	49
Turnover	65.7	21	98.5	36	1 496.7	7	1 487.1	6
Purchases and selected expenses	36.2	18	50.6	33	872.6	8	930.6	6
Value added(a)	33.5	23	49.5	40	542.1	12	301.3	22
Adjusted value added(a)	23.1	25	41.6	43	445.4	14	195.6	33
Gross operating surplus(a)	9.8	70	34.1	51	348.9	18	83.2	76
Interest paid	11.0	47	7.6	61	115.9	14	140.3	17
Cash operating surplus(b)	-10.2	93	25.2	55	332.2	17	205.7	22
Gross indebtedness	166.9	31	110.9	56	1 513.3	12	1 808.0	13
Total net capital expenditure	0.6	**	8.0	56	144.9	15	161.0	13

(a) Includes an estimate for the value of the increase in livestock.

(b) Excludes an estimate for the value of the increase in livestock.

NOTE: Standard error of change between two successive years is 1.3 times the standard error of the estimate (except for the all industries estimate where it is equal to the standard error of the estimate). Standard error of change between estimates two years apart could be as high as 1.8 times the standard error of the estimate (except for the all industries estimate where it could be 1.5 times the standard error of the estimate).

## DAIRY CATTLE 0130 .....

## PIGS 0151 .....

Items	1993-94		1994-95		1993-94		1994-95	
	\$m	SE %	\$m	SE %	\$m	SE %	\$m	SE %
Sales from crops	10.7	59	15.6	67	14.3	22	24.7	18
Sales from livestock	29.7	27	24.7	20	186.8	9	173.7	6
Sales from livestock products	213.9	16	299.1	13	8.2	46	11.8	63
Turnover	264.4	15	353.6	12	236.6	8	232.2	6
Purchases and selected expenses	189.9	18	253.4	11	181.7	6	179.6	7
Value added(a)	78.8	24	144.8	17	54.7	19	62.8	16
Adjusted value added(a)	66.2	27	127.5	19	46.9	21	51.9	20
Gross operating surplus(a)	53.0	29	111.4	21	31.5	28	34.5	30
Interest paid	11.1	32	26.1	16	10.6	11	12.6	15
Cash operating surplus(b)	37.7	50	42.9	40	22.7	29	11.7	79
Gross indebtedness	121.4	31	279.9	21	135.9	10	162.8	14
Total net capital expenditure	24.1	31	48.0	29	9.5	18	16.1	12

## SUGAR 0161 .....

## COTTON 0162 .....

Items	1993-94		1994-95		1993-94		1994-95	
	\$m	SE %	\$m	SE %	\$m	SE %	\$m	SE %
Sales from crops	892.8	5	1 184.1	5	211.2	9	269.6	11
Sales from livestock	17.2	36	10.7	38	8.6	15	2.9	26
Sales from livestock products	—	—	—	—	1.3	71	0.6	29
Turnover	993.4	4	1 309.9	6	231.5	9	304.4	13
Purchases and selected expenses	549.0	7	581.5	6	142.4	7	176.6	14
Value added(a)	447.5	10	729.5	6	92.6	14	134.0	13
Adjusted value added(a)	395.4	11	663.6	6	83.1	15	120.2	13
Gross operating surplus(a)	308.1	17	547.4	6	69.0	18	100.7	15
Interest paid	39.6	19	35.1	21	19.6	20	16.4	12
Cash operating surplus(b)	277.7	20	520.3	8	47.5	23	79.7	16
Gross indebtedness	545.9	16	694.1	20	167.0	14	269.3	16
Total net capital expenditure	134.3	15	131.7	17	23.1	19	38.8	27

(a) Includes an estimate for the value of the increase in livestock.

(b) Excludes an estimate for the value of the increase in livestock.

NOTE: Standard error of change between two successive years is 1.3 times the standard error of the estimate (except for the all industries estimate where it is equal to the standard error of the estimate). Standard error of change between estimates two years apart could be as high as 1.8 times the standard error of the estimate (except for the all industries estimate where it could be 1.5 times the standard error of the estimate).

Items	OTHER AGRICULTURE 0111-0112, 0152-0159, 0169 .....				AGRICULTURE ALL INDUSTRIES .....			
	1993-94		1994-95(c)		1993-94		1994-95	
	\$m	SE %	\$m	SE %	\$m	SE %	\$m	SE %
Sales from crops	261.8	23	340.6	16	2 441.4	4	3 028.4	4
Sales from livestock	16.7	35	171.4	41	1 866.4	6	1 874.7	5
Sales from livestock products	0.9	55	34.3	39	451.5	9	555.5	9
Turnover	291.4	21	593.2	15	5 179.3	3	6 004.9	3
Purchases and selected expenses	141.6	18	332.2	20	3 046.7	4	3 406.3	4
Value added(a)	168.0	24	293.3	14	2 099.1	5	2 518.7	4
Adjusted value added(a)	148.1	25	258.4	15	1 278.5	6	2 176.0	5
Gross operating surplus(a)	74.4	30	177.4	18	1 248.9	8	1 599.0	6
Interest paid	19.3	26	32.3	32	324.4	7	359.5	8
Cash operating surplus(b)	44.5	44	122.8	26	1 024.4	9	1 351.6	6
Gross indebtedness	287.1	19	371.0	27	4 201.1	6	4 924.3	6
Total net capital expenditure	28.3	28	37.0	18	487.5	7	607.5	7

(a) Includes an estimate for the value of the increase in livestock.

(b) Excludes an estimate for the value of the increase in livestock.

(c) Includes Poultry 0141-0142.

NOTE: Standard error of change between two successive years is 1.3 times the standard error of the estimate (except for the all industries estimate where it is equal to the standard error of the estimate). Standard error of change between estimates two years apart could be as high as 1.8 times the standard error of the estimate (except for the all industries estimate where it could be 1.5 times the standard error of the estimate).

## AGGREGATES

Items	1990-91		1991-92		1992-93	
	\$m	SE %	\$m	SE %	\$m	SE %
Sales from crops	2 121.8	3	1 817.5	5	2 090.5	4
Sales from livestock	1 465.1	5	1 478.1	5	1 678.3	4
Sales from livestock products	647.8	6	582.9	7	471.4	7
Turnover	4 621.6	3	4 183.1	3	4 595.3	3
Purchases and selected expenses	2 520.5	3	2 451.7	3	2 598.2	3
Value added(a)	2 271.6	3	1 611.1	5	1 942.1	4
Adjusted value added(a)	2 001.4	4	1 342.7	5	1 661.6	5
Gross operating surplus(a)	1 519.5	4	902.6	8	1 237.5	6
Interest paid	451.0	6	399.3	6	340.8	6
Cash operating surplus(b)	1 005.5	6	695.5	8	987.1	6
Gross indebtedness	3 292.3	6	3 508.9	6	3 606.9	5
Total net capital expenditure	358.5	9	298.4	11	358.2	8

## AGGREGATES

Items	1993-94		1994-95		1995-96p	
	\$m	SE %	\$m	SE %	\$m	SE %
Sales from crops	2 441.4	4	3 028.4	4	3 096.4	6
Sales from livestock	1 866.4	6	1 874.7	5	1 845.7	4
Sales from livestock products	451.5	9	555.5	9	524.2	10
Turnover	5 179.3	3	6 004.9	3	6 093.1	4
Purchases and selected expenses	3 046.7	4	3 406.3	4	3 393.5	4
Value added(a)	2 099.1	5	2 518.7	4	n.y.a.	n.y.a.
Adjusted value added(a)	1 786.5	6	2 176.0	5	n.y.a.	n.y.a.
Gross operating surplus(a)	1 278.5	8	1 599.0	6	n.y.a.	n.y.a.
Interest paid	324.4	7	359.5	8	n.y.a.	n.y.a.
Cash operating surplus(b)	1 024.4	9	1 351.6	6	1 428.7	8
Gross indebtedness	4 201.1	6	4 924.3	6	n.y.a.	n.y.a.
Total net capital expenditure	487.5	7	607.5	7	n.y.a.	n.y.a.

(a) Includes an estimate for the value of the increase in livestock.

(b) Excludes an estimate for the value of the increase in livestock.

NOTE: Standard error of change between two successive years is 1.3 times the standard error of the estimate (except for the all industries estimate where it is equal to the standard error of the estimate). Standard error of change between estimates two years apart could be as high as 1.8 times the standard error of the estimate (except for the all industries estimate where it could be 1.5 times the standard error of the estimate).

## AVERAGES

Items	1990-91	1991-92	1992-93	1993-94	1994-95	1995-96
	\$'000	\$'000	\$'000	\$'000	\$'000	\$'000
Sales from crops	97.1	81.5	97.8	108.6	134.0	n.y.a.
Sales from livestock	67.1	66.3	78.5	83.0	83.0	n.y.a.
Sales from livestock products	29.6	26.1	22.1	20.1	24.6	n.y.a.
Turnover	211.5	187.5	215.0	230.4	265.8	n.y.a.
Purchases and selected expenses	115.4	109.9	121.6	135.5	150.8	n.y.a.
Value added(a)	104.0	72.2	90.9	93.4	111.5	n.y.a.
Adjusted value added(a)	91.6	60.2	77.8	79.5	96.3	n.y.a.
Gross operating surplus(a)	69.5	40.5	57.9	56.9	70.8	n.y.a.
Interest paid	20.6	17.9	15.9	14.4	15.9	n.y.a.
Cash operating surplus(b)	46.0	31.2	46.2	45.6	59.8	n.y.a.
Gross indebtedness	150.7	157.3	168.8	186.9	217.9	n.y.a.
Total net capital expenditure	16.4	13.4	16.8	21.7	26.9	n.y.a.

(a) Includes an estimate for the value of the increase in livestock.

(b) Excludes an estimate for the value of the increase in livestock.

NOTE: Standard error of change between two successive years is 1.3 times the standard error of the estimate (except for the all industries estimate where it is equal to the standard error of the estimate). Standard error of change between estimates two years apart could be as high as 1.8 times the standard error of the estimate (except for the all industries estimate where it could be 1.5 times the standard error of the estimate).

# EXPLANATORY NOTES

.....

## INTRODUCTION

**1** This publication contains statistics on crops, livestock and livestock products and characteristics of farms; it includes some summary information on the financial performance of agricultural industries and the value of agricultural commodities produced.

## SCOPE AND COVERAGE

**2** The statistics on crops (including horticulture), livestock numbers, structure of agricultural industries, land management and farm inputs are derived from the annual agricultural census conducted throughout Australia at 31 March, which collects data from establishments with agricultural activity.

**3** Establishments which make only a small contribution to overall agricultural production are excluded from the scope of the census. Information is collected from establishments when their estimated value of agricultural operations (EVAO) is above a certain level. These levels have varied in past agricultural censuses, as follows:

- 1993-94 to present            EVAO \$5,000 and over;
- 1991-92 to 1992-93        EVAO \$22,500 and over;
- 1986-87 to 1990-91        EVAO \$20,000 and over; and
- 1982-83 to 1985-86        EVAO \$2,500 and over.

**4** Table 1 shows the number of agricultural establishments having an EVAO of \$5,000 and over according to the population frame selected for the agricultural census. Once data on these units are collected and processed a small number of them are found to have an EVAO of less than \$5,000. These are shown in the first column in table 5. Some units are found to have an EVAO of zero; these are shown as 'unclassified' in tables 1, 2, 5 and 6.

**5** The effect of the lower EVAO cut off of \$5,000 and over from 1993-94 onwards is to include smaller agricultural establishments that have been excluded in previous years. However, because of their small size they are not expected to change greatly the overall commodity totals. Nevertheless, the changes in scope between years mean that care must be taken in comparing census results over time.

**6** Information covering commodities such as livestock slaughterings, dairy produce and beekeeping is obtained from separate ABS collections and from organisations such as the Australian Dairy Corporation.

## REFERENCE PERIOD

**7** Statistics about crops, pastures, vegetables and fruit relate, in general, to the season ended 31 March. Where harvesting was not completed by 31 March 1996 (for example, maize, rice, apples, grapes and late planted potatoes), the production statistics relate to the completed harvest.

## EXPLANATORY NOTES *continued*

.....

### ESTABLISHMENTS WITH AGRICULTURAL ACTIVITY

**8** An establishment with agricultural activity is a single physical location which is used for the production of crops (including fruit and vegetables) and/or for the raising of livestock and the production of livestock products.

### INDUSTRY AND SIZE CLASSIFICATION

**9** Establishments in the agricultural sector were classified in accordance with the methodology described in the 1993 *Australian and New Zealand Standard Industrial Classification (ANZSIC)* (1292.0).

**10** The process of determining the industry class for ANZSIC is the 'step by step' method of classification described in Chapter 4 of the *Australian Standard Industrial Classification* (1201.0). This method requires that the Division code of the unit be determined first. The Subdivision code within the major Division of the unit is then determined, followed by the Group code and finally the Class code of the unit.

**11** The Group and Class codes of agricultural units are determined annually by valuing physical crop and livestock information collected in the agricultural census. The valuation procedure allows for the industry classification of individual units to be changed to reflect significant or long term changes in their activities.

**12** However, the procedure provides for a dampening or resistance effect to offset instability in allocation to particular classes of the classification which would arise from short-term factors such as floods and drought. To obviate such effects, the valuation procedure takes into account (without double counting) the area of crops sown and numbers of livestock on holdings at a point in time as well as the crops produced and livestock turnoff during the year. The resultant aggregation of these commodity values is termed the estimated value of agricultural operations (EVAO). It should be noted that EVAO is applicable *only for industry coding and size valuation purposes*. It is not an indicator of receipts obtained by units or of the value of agricultural commodities produced by these units.

### DEFINITIONS OF TERMS USED

**13** The following are definitions of terms used in the tables of this publication:

- *agricultural establishment* is an establishment which is engaged *mainly* in agricultural activities; and
- *establishment with agricultural activity* is a land-based establishment which is engaged in agricultural activity, regardless of the unit's predominant activity.

### CROPS, PASTURES AND HORTICULTURE

**14** Statistics of areas and production of crops relate, in the main, to crops sown during the year ended 31 March. Statistics of perennial crops relate to the position as at 31 March and the production during the year ended on that date, or of fruit set by that date. For example, particulars of area, production and yield per hectare of wheat in Australia refer to wheat sown during the period from April to September and harvested between October and the following February, i.e. the 1995-96 season relates to the harvesting period October 1995 to February 1996.



## EXPLANATORY NOTES *continued*

Statistics of other crops which in some States are harvested after 31 March 1996 (e.g. maize, potatoes, apples and pears) are collected by supplementary census returns and are included in this publication.

### LIVESTOCK SLAUGHTERING AND LIVESTOCK PRODUCTS

**15** The statistics on slaughtering and meat production are based on a monthly collection from abattoirs and other major slaughtering establishments and include estimates of animals slaughtered on farms and by country butchers and other small slaughtering establishments. Care should be taken when using this information as the figures only relate to slaughtering for human consumption and do not include animals condemned or those killed for boiling down. Also, definitions of livestock categories may differ between States and within States, particularly with regard to calves. More detailed information is published monthly in *Livestock Products, Australia* (7215.0).

### WOOL

**16** Wool receivals statistics show the amount of taxable wool received by brokers and dealers from wool producers. They exclude wool received by brokers on which wool tax has already been paid by other dealers (private buyers) or brokers. The information shown is on the basis of the State in which the wool has actually been received and does not necessarily reflect the production of wool in that State. These data are published monthly in *Livestock Products, Australia* (7215.0).

**17** The wool estimates contained in table 52 are obtained from these major sources:

(i) A monthly collection of National Council of Wool Selling Brokers of Australia in each State and incorporated in this publication with reference to the twelve months to 30 June. The data are compiled in terms of bales received into stores and converted to wool receivals in tonnes.

(ii) A monthly ABS collection of other wool brokers and dealers in each State, also incorporated with reference to the twelve months to 30 June. Data are reported in tonnes, or converted to tonnes as required.

### MILK

**18** These statistics have been collected by the Australian Dairy Corporation (ADC). More detailed information is published monthly in *Livestock Products, Australia*, (7215.0).

### POULTRY

**19** Poultry slaughtering statistics have been compiled from returns supplied by commercial poultry slaughtering establishments.

### BEEKEEPING

**20** Beekeepers are included in this collection if they have a minimum EVAO of \$5,000, whether for beekeeping alone or in conjunction with other agricultural activities.

### AGRICULTURAL FINANCE SURVEY

**21** The financial estimates in this publication have been derived from estimates from the Agricultural Finance Survey (AFS). The survey aims to meet demands of users who require annual financial statistics on a consistent basis across all agricultural industries in each State and Australia.

## EXPLANATORY NOTES *continued*

---

**22** More detailed information including an outline of the reliability of the estimates and their standard errors is published in *Agricultural Industries Financial Statistics, Australia* (7507.0).

### SCOPE AND COVERAGE OF THE AFS

**23** The population of the AFS consisted of all economic units (management units) the principal activity of which resulted in their being classified within Sub-division 01 'Agriculture' of the ANZSIC and which had an EVAO of \$22,500 or more.

### VALUE OF AGRICULTURAL COMMODITIES PRODUCED

**24** This publication contains summary information on the value of agricultural commodities produced (VACP) compiled annually for all States and Australia. The summary information contains gross values of production for selected agricultural commodities. More detailed information is available in *Value of Agricultural Commodities Produced, Australia* (7503.0).

### SCOPE AND COVERAGE OF VACP STATISTICS

**25** The statistics are derived by multiplying quantity data by price (or unit value) data. The quantity data are collected in the agricultural censuses and other ABS collections with some information from external sources. All price information is obtained from non-ABS sources.

### PRICE AND MARKETING COSTS DATA

**26** The method of collection of relevant prices for, and the costs of marketing of agricultural commodities vary considerably between States and between commodities. Where a statutory authority handles marketing of the whole or portion of a product (e.g. Australian Wheat Board, Australian Barley Board) data are usually obtained from this source. Information is also obtained from marketing reports, wholesalers, brokers and auctioneers. For all commodities, values are in respect of production during the year (or season) irrespective of whether or when payments are made. For that portion of production not marketed (e.g. hay grown on farm for own use, milk used in farm household, etc.) estimates are made from the best available information and, in general, are valued on a local value basis.

### DEFINITION OF GROSS VALUE

**27** Gross value of commodities produced is the value placed on recorded production at the wholesale prices realised in the market place.

### OTHER FORMS OF RELEASE

**28** The ABS also has more detailed agricultural statistics on microfiche and floppy disk. AgStats on floppy disk offers a wider range of data aggregated at smaller geographic areas than those generally available in printed publications, together with an easy-to-use interrogation facility.

**29** Current publications produced by the ABS are listed in the *Catalogue of Publications and Products, Australia* (1101.0). The ABS also issues, on Tuesdays and Fridays, a *Publications Advice* (1105.0) which lists publications to be released in the next few days. The Catalogue and Publications Advice are available from any ABS office.

## EXPLANATORY NOTES *continued*

---

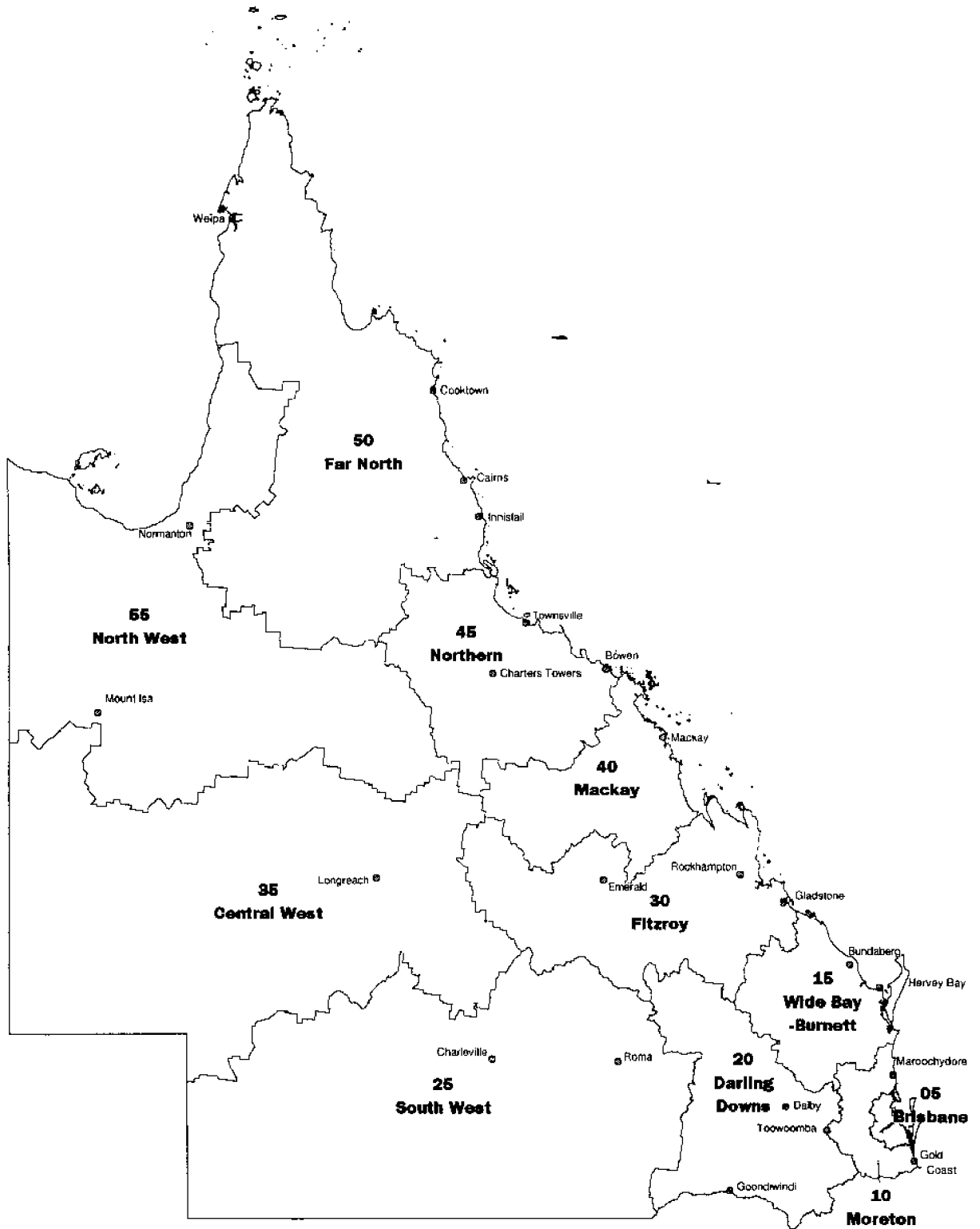
### UNPUBLISHED STATISTICS

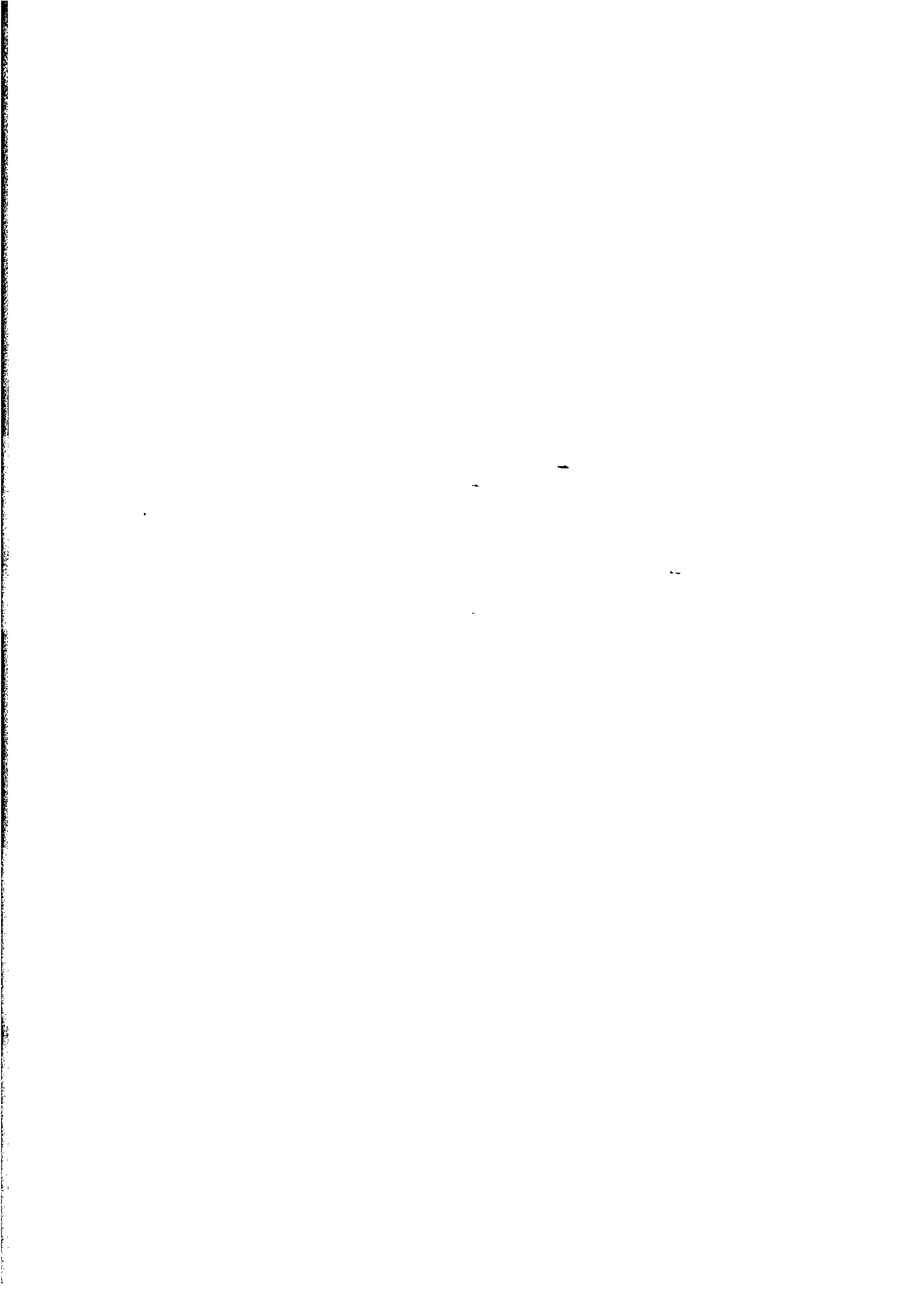
**30** As well as the statistics in this and related publications, the ABS may have other unpublished data available. Inquiries should be directed to Darren Sprott on Brisbane (07) 3222 6159.

**31** The figures shown in this publication have been revised where necessary and as a consequence may not agree with similar data shown in previous publications.

**32** Where the figures have been rounded, discrepancies may occur between sums of the component items and totals.

**STATISTICAL DIVISIONS OF QUEENSLAND at 1 July 1995**





ABS Catalogue No 7113.3 AGRICULTURE QUEENSLAND 1997

Produced by the Australian Government Publishing Service  
© Commonwealth of Australia 1997

**Recommended retail price: \$21.00**



2711330007956  
ISSN 1322-8668