



## NOTES

### NATIONAL PUBLICATION

State totals in this publication may differ from those in the recently released national publication *Selected Agricultural Commodities, Australia, Preliminary, 1995-96* (7112.0). Differences in the totals are due to updated processing.

### INQUIRIES

For further information about statistics in this publication and the availability of related unpublished statistics, contact Frank McCallum on Hobart (03) 6220 5939 or any ABS office.

For any information about other ABS statistics and services, please refer to the back of this publication.

P. C. KELLY  
Deputy Commonwealth Statistician and  
Government Statistician

## CONTENTS

		Page
EDITORIAL	Summary of findings	4
	Crops	
TABLES	<b>1</b> Area and production of cereals for grain by Statistical Division, year ended 31 March 1996p	6
	<b>2</b> Area and production of legumes for grain by Statistical Division, year ended 31 March 1996p	7
	<b>3</b> Area and production of canola by Statistical Division, year ended 31 March 1996p	8
	<b>4</b> Area and production of sugar cane by Statistical Division, year ended 31 March 1996p	8
	<b>5</b> Cereal crop and legume forecast for all purposes by Statistical Division, years ended 31 March 1996 and 1997	9
	Horticulture	
	<b>6</b> Number of trees and production of citrus and pome fruit by Statistical Division, year ended 31 March 1996p	10
	<b>7</b> Number of trees, area and production of stone and other fruit by Statistical Division, year ended 31 March 1996p	11
	<b>8</b> Area and production of selected vegetables for human consumption, years ended 31 March 1994 to 1996	12
	Livestock	
	<b>9</b> Meat cattle numbers by Statistical Division, at 31 March 1996p	13
	<b>10</b> Milk cattle numbers by Statistical Division, at 31 March 1996p	13
	<b>11</b> Number of sheep and lambs by Statistical Division, at 31 March 1996p	14
	<b>12</b> Lambing by Statistical Division, year ended 31 March 1996p	14
	<b>13</b> Pig numbers by Statistical Division, at 31 March 1996p	15
EXPLANATORY NOTES		16
MAP	Statistical Divisions of Western Australia	17

## SUMMARY OF FINDINGS

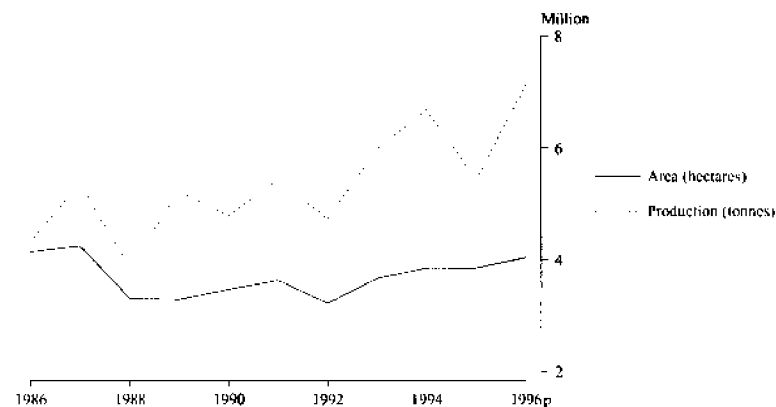
Preliminary results from the agricultural census for the 1995–96 season show improved conditions for agricultural production in Western Australia resulting in significantly larger cereal crops.

### CROPS

In terms of area, the two main cereal crops grown for grain were wheat and barley.

In the year ended 31 March 1996, the area sown to wheat for grain increased from just over 3.8 million hectares to nearly 4.1 million hectares, a rise of 5.3%. Production of wheat increased by 31.1% from the previous season to 7,126,500 tonnes. Wheat for grain was sown in all Statistical Divisions (SDs) except Pilbara and Kimberley, the major contributor in terms of production being Midlands SD which accounted for 49.1% of the State's production (see table 1).

#### WHEAT, YEARS ENDED 31 MARCH



The area sown to barley for grain increased by 31.0% over the 1994–95 season to 758,900 hectares. Production during the same period increased by 48.0% to 1,353,900 tonnes. The major contributor to barley production in Western Australia was the Lower Great Southern SD which accounted for 34.8% of the State's production (see table 1).

Sugar cane was grown commercially for the first time in Western Australia in the Ord River irrigation area of the Kimberley SD. A total of 13,100 tonnes were harvested from 100 hectares, a yield of 131 tonnes per hectare (see table 4).

### HORTICULTURE

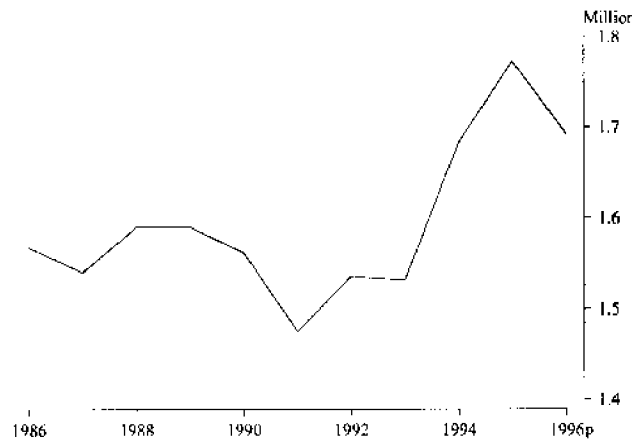
The number of apple trees six years and over at 31 March 1996 stood at 537,400, an increase of 11.4% from 31 March 1995. The major apple growing areas in Western Australia were the South West and Perth SDs, which accounted for 76.8% and 20.8%, respectively, of the State's trees (see table 6).

During the 1995–96 season the number of pear trees six years and over increased by 8.5% to 120,900. The major SD in terms of tree numbers and production was South West, accounting for 62.3% of the State's trees (see table 6).

## LIVESTOCK

The meat cattle herd was just under 1.7 million at 31 March 1996, a decrease of 4.6% from the previous year. The major SD's in terms of numbers were Kimberley and South West with 24.6% and 23.8%, respectively, of the State's meat cattle (see table 9).

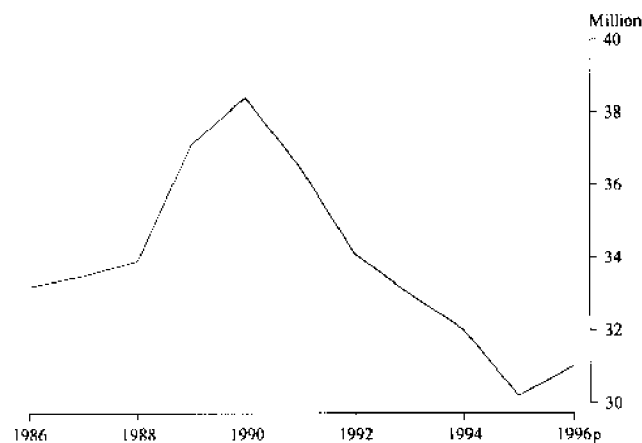
### MEAT CATTLE, AT 31 MARCH



The milk cattle herd decreased to 125,700 at 31 March 1996, just below the figure from the previous year. The major SD in terms of numbers was South West which accounted for 88.9% of the State's milk cattle (see table 10).

Sheep and lamb numbers at 31 March 1996 were 31.0 million, a slight increase from the previous year (see table 11). The major SDs in terms of sheep and lamb numbers were Lower and Upper Great Southern and Midlands, which together accounted for 71.3% of the State's flock. The number of lambs marked increased by 12.4% to 10.2 million (see table 12).

### SHEEP AND LAMBS, AT 31 MARCH



# CROPS

## 1 AREA AND PRODUCTION OF CEREALS FOR GRAIN BY STATISTICAL DIVISION, YEAR ENDED 31 MARCH 1996p

Statistical division	Barley		Grain sorghum		Oats	
	Area	Production	Area	Production	Area	Production
	'000 ha	'000 t	'000 ha	'000 t	'000 ha	'000 t
Perth	—	—	—	n.y.a.	0.2	0.5
South West	5.5	14.2	—	n.y.a.	11.6	28.9
Lower Great Southern	212.2	470.6	0.2	n.y.a.	79.7	181.4
Upper Great Southern	148.5	284.6	0.2	n.y.a.	126.5	275.0
Midlands	130.4	203.7	—	n.y.a.	74.4	102.3
South Eastern	204.5	287.6	0.3	n.y.a.	13.0	19.4
Central	57.8	93.1	—	n.y.a.	16.1	19.1
Pilbara	—	—	—	n.y.a.	—	—
Kimberley	—	—	0.1	n.y.a.	—	—
<b>Western Australia</b>						
<b>1996p</b>	<b>758.9</b>	<b>1 353.9</b>	<b>0.8</b>	<b>n.y.a.</b>	<b>321.5</b>	<b>626.5</b>
<b>1995</b>	<b>579.1</b>	<b>914.9</b>	<b>0.5</b>	<b>1.5</b>	<b>256.5</b>	<b>424.8</b>
<b>1994</b>	<b>799.3</b>	<b>1 381.4</b>	<b>0.5</b>	<b>1.5</b>	<b>268.5</b>	<b>511.1</b>

Statistical division	Triticale		Wheat	
	Area	Production	Area	Production
	'000 ha	'000 t	'000 ha	'000 t
Perth	—	—	—	0.1
South West	—	—	0.7	2.0
Lower Great Southern	1.5	3.1	258.8	605.0
Upper Great Southern	1.7	2.6	735.8	1 503.5
Midlands	13.6	14.3	2 075.8	3 500.5
South Eastern	0.5	1.0	200.5	257.8
Central	0.1	0.1	779.0	1 257.7
Pilbara	—	—	—	—
Kimberley	—	—	—	—
<b>Western Australia</b>				
<b>1996p</b>	<b>17.5</b>	<b>21.2</b>	<b>4 050.5</b>	<b>7 126.5</b>
<b>1995</b>	<b>13.6</b>	<b>12.0</b>	<b>3 848.3</b>	<b>5 437.9</b>
<b>1994</b>	<b>19.5</b>	<b>22.0</b>	<b>3 852.4</b>	<b>6 689.3</b>

## 2

## AREA AND PRODUCTION OF LEGUMES FOR GRAIN BY STATISTICAL DIVISION, YEAR ENDED 31 MARCH 1996p

Statistical division	Chick peas		Field peas		Faba beans	
	Area	Production	Area	Production	Area	Production
	'000 ha	'000 t	'000 ha	'000 t	'000 ha	'000 t
Perth	—	—	—	—	—	—
South West	—	—	—	—	—	—
Lower Great Southern	2.2	1.5	0.9	0.7	2.6	2.1
Upper Great Southern	5.4	3.8	7.0	7.4	4.0	3.7
Midlands	15.0	11.2	22.2	20.9	10.0	11.0
South Eastern	0.3	0.1	5.3	2.4	1.3	0.9
Central	8.9	10.2	3.3	3.3	1.7	3.1
Pilbara	—	—	—	—	—	—
Kimberley	0.3	0.6	—	—	—	—
<b>Western Australia</b>						
<b>1996p</b>	<b>32.1</b>	<b>27.4</b>	<b>38.8</b>	<b>34.8</b>	<b>19.6</b>	<b>20.8</b>
<b>1995</b>	<b>13.4</b>	<b>8.1</b>	<b>42.7</b>	<b>24.2</b>	<b>23.5</b>	<b>12.0</b>
<b>1994</b>	<b>3.4</b>	<b>3.4</b>	<b>33.7</b>	<b>30.8</b>	<b>3.7</b>	<b>5.8</b>

Statistical division	Lupins	
	Area	Production
	'000 ha	'000 t
Perth	0.3	0.6
South West	2.3	3.4
Lower Great Southern	73.8	89.4
Upper Great Southern	154.7	163.6
Midlands	542.2	597.8
South Eastern	35.8	31.8
Central	328.9	459.7
Pilbara	—	—
Kimberley	—	—
<b>Western Australia</b>		
<b>1996p</b>	<b>1 138.1</b>	<b>1 346.4</b>
<b>1995</b>	<b>1 152.1</b>	<b>982.2</b>
<b>1994</b>	<b>928.7</b>	<b>1 181.1</b>

## 3

## AREA AND PRODUCTION OF CANOLA BY STATISTICAL DIVISION, YEAR ENDED 31 MARCH 1996p

<i>Statistical division</i>	<i>Canola</i>	
	<i>Area</i>	<i>Production</i>
	'000 ha	'000 t
Perth	—	—
South West	2.3	3.7
Lower Great Southern	45.7	61.3
Upper Great Southern	23.6	27.7
Midlands	14.3	12.3
South Eastern	13.2	12.3
Central	2.5	2.8
Pilbara	—	—
Kimberley	—	—
<b>Western Australia</b>		
<b>1996p</b>	<b>101.7</b>	<b>120.0</b>
<b>1995</b>	<b>104.1</b>	<b>107.9</b>
<b>1994</b>	<b>35.8</b>	<b>47.3</b>

## 4

## AREA AND PRODUCTION OF SUGAR CANE BY STATISTICAL DIVISION, YEAR ENDED 31 MARCH 1996p

<i>Statistical division</i>	<i>Sugar cane (cut for crushing)</i>	
	<i>Area</i>	<i>Production</i>
	'000 ha	'000 t
Perth	—	—
South West	—	—
Lower Great Southern	—	—
Upper Great Southern	—	—
Midlands	—	—
South Eastern	—	—
Central	—	—
Pilbara	—	—
Kimberley	0.1	13.1
<b>Western Australia</b>		
<b>1996p</b>	<b>0.1</b>	<b>13.1</b>
<b>1995</b>	<b>n.c.</b>	<b>n.c.</b>
<b>1994</b>	<b>n.c.</b>	<b>n.c.</b>



## 5

CEREAL CROP AND LEGUME FORECAST FOR ALL PURPOSES BY STATISTICAL DIVISION, YEARS ENDED  
31 MARCH 1996 AND 1997

Statistical division	Barley			Oats		
	Intended sowings 1996	Actual sowings <sup>1</sup> 1996p	Intended sowings 1997p	Intended sowings 1996	Actual sowings 1996p	Intended sowings 1997p
	'000 ha	'000 ha	'000 ha	'000 ha	'000 ha	'000 ha
Perth	0.1	—	—	0.9	1.2	1.0
South West	6.3	5.5	12.1	15.5	19.8	18.6
Lower Great Southern	186.3	212.2	277.9	83.7	102.0	100.8
Upper Great Southern	141.6	148.5	188.6	132.6	149.4	151.9
Midlands	124.8	130.4	164.0	109.3	111.6	104.1
South Eastern	199.0	204.5	237.3	21.5	23.1	23.8
Central	55.4	57.8	68.3	26.2	25.4	25.8
Pilbara	—	—	—	—	—	—
Kimberley	—	—	—	—	—	—
<b>Western Australia</b>	<b>713.4</b>	<b>758.9</b>	<b>948.3</b>	<b>389.7</b>	<b>432.5</b>	<b>426.0</b>

Statistical division	Wheat			Field peas		
	Intended sowings 1996	Actual sowings <sup>1</sup> 1996p	Intended sowings 1997p	Intended sowings 1996	Actual sowings 1996p	Intended sowings 1997p
	'000 ha	'000 ha	'000 ha	'000 ha	'000 ha	'000 ha
Perth	0.6	—	0.4	—	—	—
South West	0.5	0.7	1.6	—	—	0.3
Lower Great Southern	236.3	258.8	298.0	4.4	0.9	3.0
Upper Great Southern	682.4	735.8	846.3	8.7	7.0	10.1
Midlands	1 877.3	2 075.8	2 223.6	23.1	22.2	24.4
South Eastern	205.2	200.5	228.2	8.2	5.3	5.3
Central	767.8	779.0	838.0	5.6	3.3	5.2
Pilbara	—	—	—	—	—	—
Kimberley	—	—	—	—	—	—
<b>Western Australia</b>	<b>3 770.1</b>	<b>4 050.5</b>	<b>4 436.2</b>	<b>50.1</b>	<b>38.8</b>	<b>48.3</b>

Statistical division	Lupins		
	Intended sowings 1996	Actual sowings 1996p	Intended sowings 1997p
	'000 ha	'000 ha	'000 ha
Perth	0.2	0.3	0.1
South West	2.4	2.3	2.4
Lower Great Southern	73.7	73.8	80.3
Upper Great Southern	157.3	154.7	148.1
Midlands	511.1	542.2	522.2
South Eastern	39.7	35.8	35.0
Central	325.1	328.9	353.0
Pilbara	—	—	—
Kimberley	—	—	—
<b>Western Australia</b>	<b>1 109.4</b>	<b>1 138.1</b>	<b>1 141.1</b>

<sup>1</sup> Does not include small component harvested for hay.

## HORTICULTURE

6

NUMBER OF TREES AND PRODUCTION OF CITRUS AND POME FRUIT BY STATISTICAL DIVISION,  
YEAR ENDED 31 MARCH 1996p

Statistical division	<i>Lemons and limes</i>		<i>Mandarins</i>		<i>Oranges</i>	
	<i>Trees 6 years and over</i>	<i>Production</i>	<i>Trees 6 years and over</i>	<i>Production</i>	<i>Trees 6 years and over</i>	<i>Production</i>
	'000	tonnes	'000	tonnes	'000	tonnes
Perth	12.5	858.0	24.0	536.2	21.0	896.0
South West	0.6	9.2	10.0	337.8	28.8	1 498.7
Lower Great Southern	—	0.3	—	0.7	0.1	2.3
Upper Great Southern	—	—	—	1.5	—	3.5
Midlands	0.2	45.5	16.3	579.8	102.9	2 779.6
South Eastern	—	—	—	—	—	—
Central	—	0.5	0.7	15.3	12.5	44.9
Pilbara	—	—	—	—	—	—
Kimberley	0.1	4.0	0.1	1.3	—	—
<b>Western Australia</b>						
<b>1996p</b>	<b>13.4</b>	<b>917.5</b>	<b>51.0</b>	<b>1 472.6</b>	<b>165.3</b>	<b>5 225.1</b>
<b>1995</b>	<b>14.6</b>	<b>960.2</b>	<b>52.9</b>	<b>1 584.6</b>	<b>159.7</b>	<b>5 165.8</b>
<b>1994</b>	<b>15.4</b>	<b>1 239.9</b>	<b>47.9</b>	<b>1 524.5</b>	<b>175.9</b>	<b>6 294.7</b>

Statistical division	<i>Apples</i>		<i>Nashi</i>		<i>Pears (excluding nashi)</i>	
	<i>Trees 6 years and over</i>	<i>Production</i>	<i>Trees 6 years and over</i>	<i>Production</i>	<i>Trees 6 years and over</i>	<i>Production</i>
	'000	tonnes	'000	tonnes	'000	tonnes
Perth	112.0	n.y.a.	1.8	n.y.a.	44.9	n.y.a.
South West	412.9	n.y.a.	12.4	n.y.a.	75.3	n.y.a.
Lower Great Southern	12.4	n.y.a.	0.1	n.y.a.	0.6	n.y.a.
Upper Great Southern	—	n.y.a.	—	n.y.a.	—	n.y.a.
Midlands	—	n.y.a.	—	n.y.a.	—	n.y.a.
South Eastern	—	n.y.a.	—	n.y.a.	—	n.y.a.
Central	—	n.y.a.	—	n.y.a.	—	n.y.a.
Pilbara	—	n.y.a.	—	n.y.a.	—	n.y.a.
Kimberley	—	n.y.a.	—	n.y.a.	—	n.y.a.
<b>Western Australia</b>						
<b>1996p</b>	<b>537.4</b>	<b>n.y.a.</b>	<b>14.2</b>	<b>n.y.a.</b>	<b>120.9</b>	<b>n.y.a.</b>
<b>1995</b>	<b>482.3</b>	<b>29 897.7</b>	<b>16.4</b>	<b>281.8</b>	<b>111.4</b>	<b>8 613.8</b>
<b>1994</b>	<b>497.1</b>	<b>44 579.2</b>	<b>13.4</b>	<b>282.0</b>	<b>103.9</b>	<b>8 585.6</b>

NUMBER OF TREES, AREA AND PRODUCTION OF STONE AND OTHER FRUIT BY STATISTICAL DIVISION,  
YEAR ENDED 31 MARCH 1996p

Statistical division	Apricots		Nectarines		Peaches	
	Trees 6 years and over	Production	Trees 6 years and over	Production	Trees 6 years and over	Production
	'000	tonnes	'000	tonnes	'000	tonnes
Perth	6.9	224.6	34.9	803.3	50.1	1 381.1
South West	3.7	113.3	61.3	1 907.0	21.0	649.2
Lower Great Southern	0.3	8.0	0.4	5.4	0.8	6.9
Upper Great Southern	—	3.2	—	3.4	—	0.8
Midlands	1.8	47.7	8.6	127.2	10.6	208.5
South Eastern	—	—	—	—	—	—
Central	—	2.0	0.2	53.5	0.2	78.4
Pilbara	—	—	—	—	—	—
Kimberley	—	—	—	—	—	—
<b>Western Australia</b>						
<b>1996p</b>	<b>12.8</b>	<b>398.9</b>	<b>105.4</b>	<b>2 899.7</b>	<b>82.8</b>	<b>2 324.8</b>
<b>1995</b>	<b>13.4</b>	<b>416.7</b>	<b>84.1</b>	<b>2 199.9</b>	<b>70.7</b>	<b>1 888.8</b>
<b>1994</b>	<b>13.9</b>	<b>463.2</b>	<b>62.0</b>	<b>2 002.2</b>	<b>72.4</b>	<b>2 238.7</b>

Statistical division	Plums and prunes		Bananas		Strawberries	
	Trees 6 years and over	Production	Area of bearing age	Production	Area of bearing age	Production
	'000	tonnes	ha	tonnes	ha	tonnes
Perth	80.3	2 503.3	—	—	60.1	1 363.2
South West	65.9	1 296.2	—	—	1.2	13.5
Lower Great Southern	0.3	4.0	—	—	13.8	554.2
Upper Great Southern	—	1.5	—	—	—	—
Midlands	1.5	16.9	—	—	—	—
South Eastern	—	—	—	—	—	—
Central	—	5.4	286.6	8 653.3	—	—
Pilbara	—	—	—	—	—	—
Kimberley	—	—	102.6	3 559.4	—	—
<b>Western Australia</b>						
<b>1996p</b>	<b>147.9</b>	<b>3 827.3</b>	<b>389.2</b>	<b>12 254.8</b>	<b>75.1</b>	<b>1 931.0</b>
<b>1995</b>	<b>129.5</b>	<b>3 285.0</b>	<b>396.0</b>	<b>13 012.3</b>	<b>100.2</b>	<b>2 070.3</b>
<b>1994</b>	<b>117.1</b>	<b>3 413.8</b>	<b>545.4</b>	<b>18 602.6</b>	<b>121.6</b>	<b>2 287.8</b>

## 8

 AREA AND PRODUCTION OF SELECTED VEGETABLES FOR HUMAN CONSUMPTION, YEARS ENDED  
 31 MARCH 1994 TO 1996p

	Unit	1994	1995	1996p
<b>Beans — French and runner</b>				
Area	ha	199.4	212.9	238.6
Production	t	1 528.6	1 269.3	1 294.3
<b>Broccoli</b>				
Area	ha	350.9	286.0	265.7
Production	t	3 207.5	2 713.1	2 694.9
<b>Cabbages</b>				
Area	ha	134.1	158.2	163.8
Production	t	6 288.3	7 450.6	6 649.9
<b>Carrots</b>				
Area	ha	814.4	836.0	1 086.9
Production	t	42 756.9	44 672.7	49 228.3
<b>Cauliflowers</b>				
Area	ha	902.6	1 020.5	1 465.3
Production	t	14 066.4	15 676.2	24 364.1
<b>Cucumbers</b>				
Area	ha	102.7	93.1	99.0
Production	t	1 521.5	1 298.2	2 020.4
<b>Green peas (pod weight)</b>				
Area	ha	1 112.0	667.0	676.4
Production	t	2 836.8	1 749.8	2 872.4
<b>Lettuces</b>				
Area	ha	408.4	434.1	460.4
Production	t	15 877.5	13 545.4	15 017.1
<b>Melons — water</b>				
Area	ha	468.1	638.9	478.1
Production	t	11 512.0	15 674.2	13 842.4
<b>Melons — rock and cantaloupe</b>				
Area	ha	545.2	526.7	480.3
Production	t	8 253.2	8 294.1	10 097.5
<b>Mushrooms</b>				
Area	ha	9.4	10.2	6.9
Production	t	1 158.5	1 284.7	1 290.3
<b>Onions — white and brown</b>				
Area	ha	376.8	398.0	543.0
Production	t	22 479.8	22 691.1	30 699.3
<b>Potatoes<sup>2</sup></b>				
Area	ha	2 720.4	2 553.0	2 512.9
Production	t	111 812.6	103 572.5	n.y.a.
<b>Pumpkins</b>				
Area	ha	535.4	511.6	697.1
Production	t	9 534.8	9 152.2	12 888.9
<b>Tomatoes</b>				
Area	ha	225.0	192.7	177.5
Production	t	8 193.8	7 693.6	7 109.6

<sup>1</sup> Production figure for 1995 is not comparable with 1994 and 1996 data due to changes in questions asked.

<sup>2</sup> 1994 figures include potato for seed.

## LIVESTOCK

### 9 MEAT CATTLE NUMBERS BY STATISTICAL DIVISION, AT 31 MARCH 1996p

Statistical division	<i>Bulls and bull calves intended for service</i>	<i>Cows and heifers one year and over</i>	<i>Heifers and other calves under one year</i>	<i>Other cattle one year and over</i>	<i>Total meat cattle</i>	<i>Percentage of total meat cattle herd</i>
	'000	'000	'000	'000	'000	%
Perth	0.8	12.6	7.6	5.7	26.7	1.6
South West	7.7	177.4	111.0	106.4	402.5	23.8
Lower Great Southern	6.5	131.0	71.0	35.2	243.7	14.4
Upper Great Southern	1.1	23.1	12.5	6.3	43.0	2.5
Midlands	4.4	78.0	39.9	24.0	146.3	8.6
South Eastern	3.7	74.0	42.3	12.1	132.1	7.8
Central	3.1	81.2	33.6	25.0	142.9	8.4
Pilbara	3.4	73.4	33.0	28.8	138.6	8.2
Kimberley	11.8	229.2	75.5	99.2	415.7	24.6
<b>Western Australia</b>						
<b>1996p</b>	<b>42.7</b>	<b>879.9</b>	<b>426.4</b>	<b>342.7</b>	<b>1 691.7</b>	<b>100.0</b>
<b>1995</b>	<b>46.8</b>	<b>945.9</b>	<b>434.1</b>	<b>346.2</b>	<b>1 773.1</b>	<b>100.0</b>
<b>1994</b>	<b>45.1</b>	<b>950.5</b>	<b>398.5</b>	<b>288.4</b>	<b>1 682.5</b>	<b>100.0</b>

### 10 MILK CATTLE NUMBERS BY STATISTICAL DIVISION, AT 31 MARCH 1996p

Statistical division	<i>Cows in milk and dry</i>	<i>Other milk cattle</i>	<i>Total milk cattle</i> <sup>1</sup>	<i>Percentage of total milk cattle herd</i>
	'000	'000	'000	%
Perth	3.6	1.9	5.5	4.4
South West	65.1	46.7	111.8	88.9
Lower Great Southern	4.4	3.4	7.8	6.2
Upper Great Southern	0.1	0.1	0.2	0.2
Midlands	0.2	—	0.2	0.2
South Eastern	—	—	—	—
Central	—	—	—	—
Pilbara	—	—	—	—
Kimberley	0.1	0.1	0.2	0.2
<b>Western Australia</b>				
<b>1996p</b>	<b>73.7</b>	<b>52.0</b>	<b>125.7</b>	<b>100.0</b>
<b>1995</b>	<b>73.2</b>	<b>52.8</b>	<b>126.0</b>	<b>100.0</b>
<b>1994</b>	<b>73.8</b>	<b>49.3</b>	<b>123.0</b>	<b>100.0</b>

<sup>1</sup> Excludes house cows and heifers.

# 11

## NUMBER OF SHEEP AND LAMBS BY STATISTICAL DIVISION, AT 31 MARCH 1996p

Statistical division	Sheep <sup>1</sup> (1 year and over)	Lambs and hoggets (under 1 year)	Total sheep and lambs	Percentage of total sheep flock
	'000	'000	'000	%
Perth	46.9	18.5	65.4	0.2
South West	1 197.2	344.5	1 541.7	5.0
Lower Great Southern	5 705.0	1 900.0	7 605.0	24.5
Upper Great Southern	5 186.6	1 970.0	7 156.6	23.1
Midlands	5 363.3	2 019.5	7 382.8	23.8
South Eastern	2 208.7	830.4	3 039.1	9.8
Central	2 992.4	1 091.7	4 084.1	13.2
Pilbara	125.0	38.4	163.4	0.5
Kimberley	—	—	—	—
<b>Western Australia</b>				
<b>1996p</b>	<b>22 825.1</b>	<b>8 213.1</b>	<b>31 038.2</b>	<b>100.0</b>
<b>1995</b>	<b>23 353.4</b>	<b>6 864.4</b>	<b>30 217.9</b>	<b>100.0</b>
<b>1994</b>	<b>24 437.7</b>	<b>7 513.8</b>	<b>31 951.5</b>	<b>100.0</b>

<sup>1</sup> Sheep 1 year and over including rams, ewes and wethers.

# 12

## LAMBING BY STATISTICAL DIVISION, YEAR ENDED 31 MARCH 1996p

Statistical division	Ewes mated <sup>1</sup>	Lambs marked	Lamb marking ratio <sup>2</sup>	Lambing expectations year ended 31 March 1997 <sup>3</sup>		
				Joined to merino rams	Joined to other rams	Total
	'000	'000	%	'000	'000	'000
Perth	18.2	13.2	72.5	7.6	14.0	21.6
South West	640.3	487.2	76.1	422.0	267.3	689.3
Lower Great Southern	3 145.5	2 334.3	74.2	2 572.2	660.6	3 232.8
Upper Great Southern	3 080.0	2 328.0	75.6	2 707.2	431.3	3 138.5
Midlands	3 374.0	2 671.5	79.2	2 714.0	804.0	3 518.0
South Eastern	1 424.1	1 002.1	70.4	1 309.1	162.9	1 472.0
Central	1 826.1	1 344.2	73.6	1 678.1	171.4	1 849.5
Pilbara	70.1	28.5	40.7	79.3	—	79.3
Kimberley	—	—	—	—	—	—
<b>Western Australia</b>						
<b>1996p</b>	<b>13 578.2</b>	<b>10 209.0</b>	<b>75.2</b>	<b>11 489.5</b>	<b>2 511.5</b>	<b>14 001.0</b>
<b>1995</b>	<b>12 925.9</b>	<b>9 080.1</b>	<b>70.2</b>	<b>11 313.0</b>	<b>2 146.0</b>	<b>13 459.0</b>
<b>1994</b>	<b>12 988.2</b>	<b>9 874.0</b>	<b>76.0</b>	<b>11 550.5</b>	<b>2 398.0</b>	<b>13 948.5</b>

<sup>1</sup> Ewes mated to produce lambs marked in the season shown.

<sup>2</sup> Lambs marked as a proportion of ewes mated to produce lambs.

<sup>3</sup> Forecast made at the end of the 1995-96 season.

## 13

PIG NUMBERS<sup>1</sup> BY STATISTICAL DIVISION, AT 31 MARCH 1996p

<i>Statistical division</i>	<i>Total pigs</i>	<i>Percentage of total pigs</i>
	'000	%
Perth	14.3	4.3
South West	49.9	15.1
Lower Great Southern	64.0	19.4
Upper Great Southern	64.5	19.6
Midlands	113.4	34.4
South Eastern	6.5	2.0
Central	17.3	5.2
Pilbara	0.1	—
Kimberley	0.1	—
<b>Western Australia</b>		
<b>1996p</b>	<b>329.9</b>	<b>100.0</b>
<b>1995</b>	<b>316.4</b>	<b>100.0</b>
<b>1994</b>	<b>311.6</b>	<b>100.0</b>

<sup>1</sup> Includes suckers, weaners, growers etc.

## EXPLANATORY NOTES

- INTRODUCTION**
- 1** This publication contains preliminary agricultural estimates for the 1995–96 season and comparative data for earlier years. Final figures for the 1995–96 season will be published early in 1997 when all agricultural census returns have been fully processed.
- SCOPE AND COVERAGE**
- 2** Estimates are based on information obtained from a substantial proportion of farms in Western Australia, from the agricultural census conducted throughout Australia for the year ended 31 March 1996.
- 3** Establishments which make only a small contribution to overall agricultural production are excluded from the scope of the census. Information is collected from establishments when their EVAO is above a certain level. These levels have varied in past agricultural censuses, as follows:
- |                      |                             |
|----------------------|-----------------------------|
| ■ 1993–94 to present | EVAO \$5,000 and over;      |
| ■ 1991–92 to 1992–93 | EVAO \$22,500 and over;     |
| ■ 1986–87 to 1990–91 | EVAO \$20,000 and over; and |
| ■ before 1986–87     | EVAO \$2,500 and over.      |
- RELIABILITY OF ESTIMATES**
- 4** Preliminary estimates are based on forms received and processed at the point of estimation (approximately 75%) and are subject to sampling error.
- 5** Sampling error is the variation occurring because information has not been collected from **all** the relevant units. This is often described in terms of relative standard error (RSE) which makes certain assumptions about the distribution of the units used in estimation. In particular, these units are assumed to have been drawn from the population randomly and are therefore representative of those units for which there is no information (late returns). If there is a bias associated with these units (e.g. units faring poorly may reply later and thus may not be included in preliminary estimates), this assumption is no longer valid. However, the RSE measures should still be regarded as a good guide to the reliability of the estimates and are available on request.
- RELATED PUBLICATIONS**
- 6** Users may also wish to refer to the following priced publications which are available on request:
- Agricultural Industries, Financial Statistics, Australia* (7507.0)  
*Value of Agricultural Commodities Produced, Australia* (7503.0)
- OTHER FORMS OF RELEASE**
- 7** The ABS has more detailed agricultural statistics on floppy disk and CD. AgStats on floppy disk or CD offers a wider range of data aggregated at smaller geographic areas than those generally available in printed publications, together with an easy-to-use interrogation facility.
- 8** Current publications produced by the ABS are listed in the *Catalogue of Publications and Products, Australia* (1101.0). The ABS also issues, on Tuesdays and Fridays, a *Release Advice* (1105.0) which lists publications to be released in the following few days. The Catalogue and Release Advice are available from any ABS office.
- SYMBOLS AND OTHER USAGES**
- |        |                        |
|--------|------------------------|
| —      | nil or rounded to zero |
| ha     | hectares               |
| t      | tonnes                 |
| n.c.   | not collected          |
| n.y.a. | not yet available      |
| p      | preliminary            |
- 9** Where the figures have been rounded, discrepancies may occur between sums of the component items and totals.



# STATISTICAL DIVISIONS OF WESTERN AUSTRALIA

