



# PRINCIPAL AGRICULTURAL COMMODITIES QUEENSLAND PRELIMINARY

# Statistics

[illegible]



**PRINCIPAL AGRICULTURAL COMMODITIES  
QUEENSLAND  
PRELIMINARY  
1994-95**

**W. McLennan  
Australian Statistician**

**AUSTRALIAN BUREAU OF STATISTICS**

**CATALOGUE NO. 7111.3**

**August 1995**



## CONTENTS

<i>Table</i>			<i>Page</i>
		Summary of Findings	2
<b>Crops</b>	1	Area and Production of Principal Crops, Years Ended 31 March 1992 to 1995	5
<b>Livestock</b>	2	Sheep, Years Ended 31 March 1992 to 1995	5
	3	Matings and Lambings, Years Ended 31 March 1993 to 1996	6
	4	Cattle, Years Ended 31 March 1992 to 1995	6
	5	Pigs, Years Ended 31 March 1992 to 1995	6
		Explanatory Notes	7
<i>Graphs</i>			
		Production of Wheat and Barley for Grain, 1977-1995	2
		Average Yield of Wheat and Barley for Grain, 1977-1995	2
		Production of Sugar Cane, 1977-1995	2
		Sheep and Lambs	3
		Lambing Ratio	3
		Dairy Cattle	4
		Beef Cattle	4
		Pigs	4

---

### INQUIRIES

- *for more information about statistics in this publication and the availability of related unpublished statistics, contact the following officers:  
for agricultural statistics, Mr Frank McCallum on Hobart (002) 20 5939,  
Fax (002) 20 5879; for general queries, any ABS State office.*
  - *for information about other ABS statistics and services please refer to back page of this publication.*
-



## SUMMARY OF FINDINGS

Preliminary Queensland estimates from the 1994-95 Agricultural Census show:

## CROPS

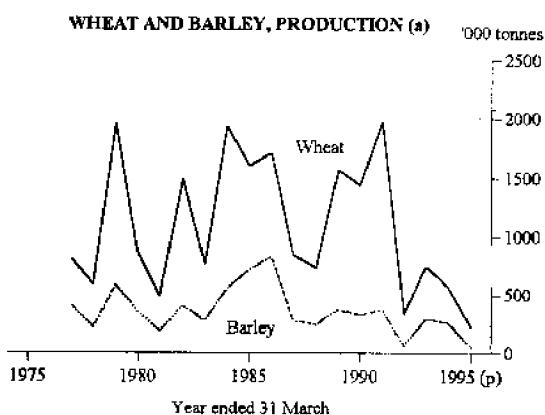
## Wheat

The area of wheat planted during the 1994-95 season was 596 thousand hectares; this was up by 7 per cent on the 556 thousand hectares planted during the previous year.

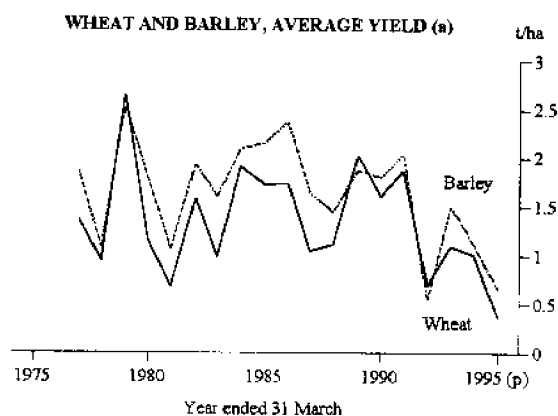
Wheat production of 222 thousand tonnes for 1994-95 was down 60 per cent on the 555 thousand tonnes harvested in 1993-94. This was reflected in the average yield which was only 0.4 tonnes per hectare compared with 1.0 tonnes per hectare in the 1993-94 season.

## Barley

The area of barley sown was down by 66 per cent to 80 thousand hectares. The yield also decreased from 1.1 tonnes per hectare in 1993-94 to 0.7 tonnes per hectare in 1994-95. Production fell 80 per cent to 53 thousand tonnes.



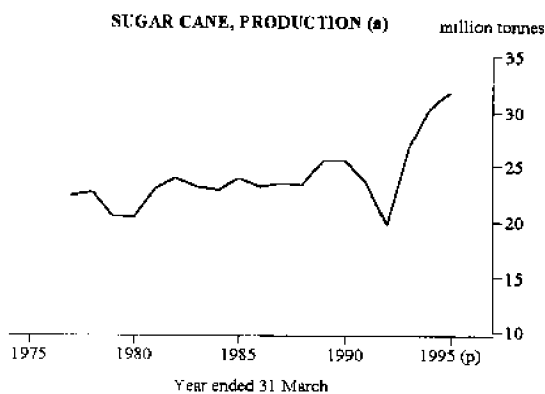
(a) See paragraph 4 of the Explanatory Notes.



(a) See paragraph 4 of the Explanatory Notes.

## Sugar cane

The area of sugar cane planted in 1994-95 decreased to 350 thousand hectares from 404 thousand hectares in 1993-94, a fall of 14 per cent. Production increased from 30.0 million tonnes in 1993-94 to 31.7 million tonnes in 1994-95, a rise of 6 per cent. Average yield increased 22 per cent from 74.5 to 90.6 during the same period.

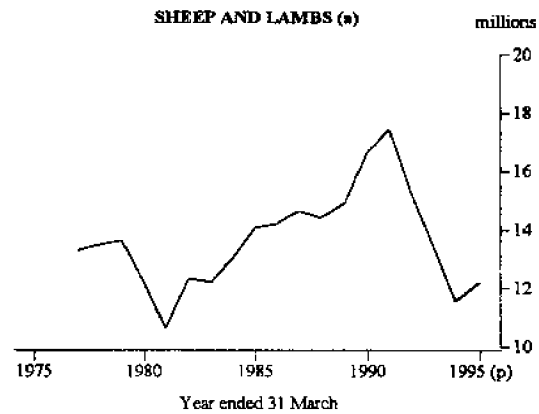


(a) See paragraph 4 of the Explanatory Notes.

## LIVESTOCK

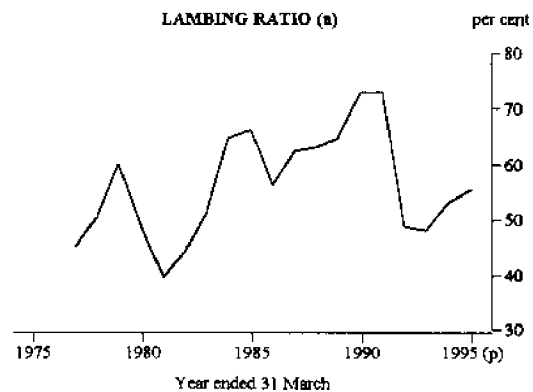
### Sheep and lambs

The preliminary estimate for the total flock of sheep and lambs at 31 March 1995 was 12.2 million, a slight increase on 1993-94 but still well down on the 17.4 million recorded in March 1991.



(a) See paragraph 4 of the Explanatory Notes.

There were 4.4 million sheep mated during the year ended March 1995, up 23 per cent on the previous year. From these matings, 2.5 million lambs were marked. For the 1993-94 season 53 per cent of matings resulted in lambs being marked. This ratio rose slightly to 55 per cent for 1994-95.

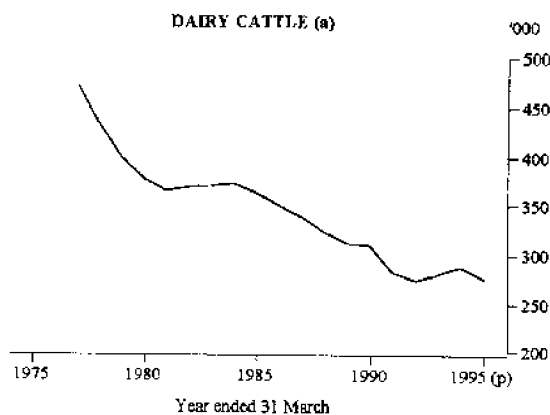


(a) See paragraph 4 of the Explanatory Notes.



**Dairy cattle**

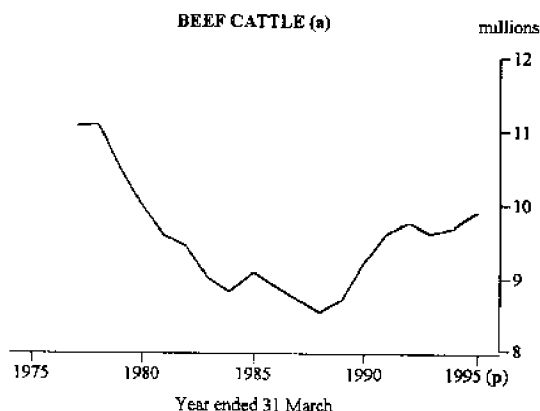
The Queensland dairy cattle herd decreased to 276 thousand at 31 March 1995 from 286 thousand at 31 March 1994. This was a decrease of 4 per cent.



(a) See paragraph 4 of the Explanatory Notes.

**Beef cattle**

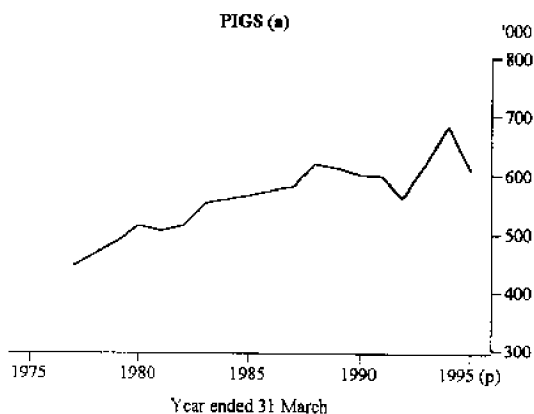
Beef cattle numbers increased by an estimated 2 per cent during the year ended 31 March 1995 to 9.9 million. Bulls and bull calves for service rose 5 per cent during the period, while other calves rose by 17 per cent. Cows and heifers aged over one year fell by 8 per cent during the period.



(a) See paragraph 4 of the Explanatory Notes.

**Pigs**

There was an 11 per cent decrease in the preliminary estimate of pigs recorded at 31 March 1995 (609 thousand), although the number is above the level recorded in 1992 and earlier years.



(a) See paragraph 4 of the Explanatory Notes.

## PRINCIPAL CROPS

TABLE 1. AREA AND PRODUCTION OF PRINCIPAL CROPS,  
YEARS ENDED 31 MARCH 1992 TO 1995 (a)

	1992	1993	1994	1995p	Change 1995p over 1994 (%)	Standard error (%) (b)
<i>Area ('000 hectares)</i>						
Cereals for grain						
Barley	127.7	189.3	232.2	80.1	-65.5	6.0
Oats	15.0	14.8	15.9	12.3	-22.6	12.0
Sorghum	419.8	308.1	398.7	482.8	21.1	3.9
Wheat	491.7	669.2	555.5	596.4	7.4	4.0
Other crops						
Sugar cane	383.0	384.3	404.1	349.5	-13.5	0.7
<i>Production ('000 tonnes)</i>						
Cereals for grain						
Barley	70.1	285.2	260.5	52.6	-79.8	7.8
Oats	5.2	9.7	7.8	4.4	-43.6	2.0
Sorghum	1,044.8	315.4	851.6	n.a.	n.a.	n.a.
Wheat	343.7	735.2	555.4	222.0	-60.0	8.5
Other crops						
Sugar cane	19,604.9	26,696.9	30,008.3	31,679.7	5.6	0.8
<i>Yield (tonnes per hectare)</i>						
Cereals for grain						
Barley	0.5	1.5	1.1	0.7	-36.4	n.a.
Oats	0.3	0.7	0.5	0.4	-20.0	n.a.
Sorghum	2.5	1.0	2.1	n.a.	n.a.	n.a.
Wheat	0.7	1.1	1.0	0.4	-60.0	n.a.
Other crops						
Sugar cane	51.2	69.5	74.5	90.6	21.6	n.a.

(a) See paragraph 4 of the Explanatory Notes.

(b) Standard errors are calculated on the 1995 preliminary estimates for area and production of principal crops.

## LIVESTOCK

TABLE 2. SHEEP, YEARS ENDED 31 MARCH 1992 TO 1995 (a)

	1992	1993	1994	1995p	Change 1995p over 1994 (%)	Standard error (%) (b)
<i>('000)</i>						
Lambs and hoggets						
under one year	2,008.0	1,784.6	1,630.8	2,416.1	48.2	3.7
Other sheep	13,265.0	11,622.1	9,916.4	9,777.0	-1.4	1.3
<b>Total</b>	<b>15,273.0</b>	<b>13,406.7</b>	<b>11,547.2</b>	<b>12,193.2</b>	<b>5.6</b>	<b>5.0</b>

(a) See paragraph 4 of the Explanatory Notes.

(b) Standard errors are calculated on the 1995 preliminary estimate of sheep numbers.

TABLE 3. MATINGS AND LAMBINGS, YEARS ENDED 31 MARCH 1993 TO 1996 (a)

	1993	1994	1995	1996p	Standard error (%) (b)
	(000)				
Farmers' forecast of intended matings of ewes for lambing					
<i>Total intended matings</i>	4,691.0	3,614.9	4,292.1	4,364.2	2.2
Actual matings	4,171.4	3,601.0	4,441.5p	n.y.a.	n.a.
Lambs marked	1,997.6	1,897.7	2,459.8p	n.y.a.	n.a.
	<i>Per cent</i>				
Actual matings as a percentage of Intended matings	88.9	99.6	103.5p	n.a.	n.a.
Lambs marked as a percentage of Actual matings	47.9	52.7	55.4p	n.a.	n.a.

(a) See paragraph 4 of the Explanatory Notes.

(b) Standard errors are calculated on the 1996 preliminary estimates for intended matings

TABLE 4. CATTLE, YEARS ENDED 31 MARCH 1992 TO 1995 (a)

	1992	1993	1994	1995p	Change 1995p over 1994 (%)	Standard error (%) (b)
	(000)					
Dairy cattle						
Cows, in milk and dry	184.3	187.1	188.7	182.3	-3.4	0.9
Bulls and bull calves for service	2.8	3.0	3.1	93.2	-4.6	1.5
Heifers and heifer calves	87.7	89.7	94.6			
<i>Total dairy cattle</i>	274.8	279.8	286.4	275.5	-3.8	2.4
Beef cattle						
Bulls and bull calves for service	212.0	214.1	217.8	228.7	5.0	1.8
Other calves one year and under	1,952.0	1,902.7	1,867.5	2,178.3	16.6	1.2
Cows and heifers, one year and over						
For beef and herd replacement	4,787.0	4,114.9	4,279.2	4,498.3	-7.9	0.9
Other						
Other cattle	2,780.0	2,708.3	2,686.3	2,984.1	11.1	1.8
<i>Total beef cattle</i>	9,731.0	9,593.2	9,656.1	9,888.8	2.4	5.7
<b>Total all cattle</b>	<b>10,005.8</b>	<b>9,873.0</b>	<b>9,942.4</b>	<b>10,164.3</b>	<b>2.2</b>	<b>8.1</b>

(a) See paragraph 4 of the Explanatory Notes.

(b) Standard errors are calculated on the 1995 preliminary estimates for cattle numbers.

TABLE 5. PIGS, YEARS ENDED 31 MARCH 1992 TO 1995 (a)

	1992	1993	1994	1995p	Change 1995p over 1994 (%)	Standard error (%) (b)
	(000)					
Total pigs	559.6	617.5	681.9	608.9	-10.7	2.2

(a) See paragraph 4 of the Explanatory Notes.

(b) Standard errors are calculated on 1995 preliminary estimates for pig numbers.

## EXPLANATORY NOTES

### Introduction

1. This publication contains preliminary agricultural estimates for the 1994-95 season, together with estimates of intended sowings of principal crops and intended ewe matings for the forthcoming season. Comparative data for the three previous years is also included.

### Scope and coverage

2. From 1986-87 to 1990-91 the scope of the Census included those establishments undertaking agricultural activity and having an estimated value of agricultural operations (EVAO) of \$20,000 or more. Prior to 1986-87 the EVAO cut-off was \$2,500 or more. From 1991-92 to 1992-93, only those establishments with an EVAO of \$22,500 or more were included.

3. From 1993-94 the census is based on a scope of \$5,000 or more EVAO.

4. The figures shown in tables in this publication for 1993-94 and 1994-95 are based on the \$5,000 EVAO cut-off. The figures for 1991-92 and 1992-93 have not been adjusted to a \$5,000 EVAO basis and therefore are not comparable with later years. The data presented in the graphs are based on the scope of the collection which applied at the time.

### Reliability of estimates

5. Since the estimates are based on a proportion (approximately 40%) of agricultural establishments selected for survey in 1994-95, they are subject to sampling variability. That is, they may differ from the figures that would have been produced if all units had been included.

6. One measure of the likely difference is given by the *standard error*, which indicates the extent to which an estimate might have varied because only a sample of units was included. There are about two chances in three that a sample estimate will differ by less than one standard error from the figure that would have been obtained if all units had been included and about nineteen chances in twenty that the difference will be less than two standard errors.

7. In this publication, sampling variability is measured by the relative standard error which is obtained by expressing the standard error as a percentage of the estimate to which it refers. The relative standard error is a useful measure, in that it provides an immediate indication of the percentage errors likely to have occurred due to sampling. It avoids the need to refer also to the size of the estimate.

8. As an example of the above, if a sample gives an estimate of 1,000 hectares and the relative standard error is five per cent then there would be two chances in three that, if all units were included, a figure within the range of 950 to 1,050 hectares would have been obtained. There would also be nineteen chances in twenty that the figure would lie within the range 900 to 1,100 hectares.

### Symbols

kg	kilograms
n.a.	not available
n.y.a.	not yet available
p	preliminary - figure or series
t	tonnes
t/ha	tonnes per hectare

### General

9. Revised estimates will be available in mid September this year when most of the Agricultural Census returns have been processed. Final results will be published early in 1996.

10. The ABS has a more detailed agricultural statistics on MS-DOS compatible floppy disk, compact disk, microfiche and magnetic tape. AgStats on floppy disk and compact disk offers a wider range of data aggregated at a smaller geographical areas than those generally available in printed publications. Both systems come complete with an easy-to-use, menu-driven interrogation facility.

11. Current publications and other standard products and services are listed in the Catalogue of Publications (1101.0). The catalogue is available from any ABS office.





## *For more information ...*

The ABS publishes a wide range of statistics and other information on Australia's economic and social conditions. Details of what is available in various publications and other products can be found in the *ABS Catalogue of Publications and Products* available at all ABS Offices (see below for contact details).

### **Information Consultancy Service**

Information tailored to special needs of clients can be obtained from the Information Consultancy Service available at ABS Offices (see Information Inquiries below for contact details).

### **National Dial-a-Statistic Line**

0055 86 400

(Steadycall P/L: premium rate 25c/21.4 secs.)

This number gives 24-hour access, 365 days a year, for a range of statistics.

### **Electronic Data Services**

A large range of data is available via on-line services, diskette, magnetic tape, tape cartridge and CD ROM. For more details about these electronic data services, contact any ABS Office (see below).

### **Bookshops and Subscriptions**

There is a large number of ABS publications available from ABS bookshops (see below Bookshop Sales for contact details). The ABS also provides a subscription service through which nominated publications are supplied by mail on a regular basis (telephone Subscription Service toll free on 008 02 0608 Australia wide).

## *Sales and Inquiries*

<b>Regional Offices</b>	<b>Information Inquiries</b>	<b>Bookshop Sales</b>
SYDNEY (02)	268 4611	268 4620
MELBOURNE (03)	615 7000	615 7829
BRISBANE (07)	222 6351	222 6350
PERTH (09)	360 5140	360 5307
ADELAIDE (08)	237 7100	237 7582
HOBART (002)	20 5800	20 5800
CANBERRA (06)	207 0326	207 0326
DARWIN (089)	43 2111	43 2111
<b>National Office</b>		
ACT (06)	252 6007	008 020 608

### **ABS Email Addresses**

Keylink	STAT.INFO/ABS
X.400	(C:AU,A:TELMEMO,O:ABS,SN:INFO,FN:STAT)
Internet	STAT.INFO@ABS. TELEMEMO.AU



Information Services, ABS, PO Box 10, Belconnen ACT 2616





2711130007941

ISSN 1322-8641