



AUSTRALIAN BUREAU OF STATISTICS

CANBERRA

THE LABOUR FORCE AUSTRALIA

SEPTEMBER 1983

CATALOGUE NO. 6203.0

PHONE INQUIRIES	<i>for more information about these statistics—contact Mr Alan Sharp on Canberra (062) 52 6525 or any of our State offices.</i>
	<i>other inquiries including copies of publications—contact Information Services on Canberra (062) 52 6627 or in any of our State offices.</i>
MAIL INQUIRIES	<i>write to Information Services, ABS, P.O. Box 10, Belconnen, A.C.T. 2616 or any of our State offices.</i>

CATALOGUE NO. 6203.0

11.30 A.M. 3 NOVEMBER 1983

THE LABOUR FORCE, AUSTRALIA, SEPTEMBER 1983

CONTENTS

Table	Page
PART 1. LABOUR FORCE ESTIMATES	
Explanatory notes	1
Graphs	6
Labour force status of the civilian population aged 15 and over—	
1. Australia	10
2. Seasonally adjusted series	12
3. Marital status	13
4. States and Territories	13
5. State capital cities	14
6. Australian Capital Territory	14
7. Aged 15 to 19 (single years), by school attendance	15
8. Aged 20 to 24 (single years)	15
9. Birthplace	16
10. Born outside Australia, by birthplace and period of arrival	17
11. Age	17
12. Participation rates, by age and birthplace	18
Employed persons—	
13. Full-time and part-time workers, by age	18
14. Hours worked	19
15. Employment/population ratios by age and marital status	19
16. Full-time workers who worked less than 35 hours, by reason	19
17. Part-time workers, whether preferred to work more hours, by age	20
18. Part-time workers, whether preferred to work more hours, by hours worked	20
Unemployed Persons—	
19. States, by age	21
20. Age and whether looking for full-time or part-time work	22
21. Birthplace by age	22
22. Duration of unemployment and age, etc.	23
23. Industry and occupation of last full-time job and duration of unemployment	24
24. Aged 15 to 19: duration of unemployment and school attendance	24
25. Age and active steps taken to find work	25
Persons not in the labour force—	
26. Age and marital status	25
27. Whether looking for work, etc.	25
Gross flows—	
28. Estimates of labour force status and gross changes (flows) derived from matched records, August and September 1983	26

CONTENTS—continued

Table	Page
Technical note—	
Estimation procedure	27
Reliability of the estimates	27
Supplementary and special surveys on labour force and related topics	30
<p>NOTE. Some additional labour force survey data are included in other issues of this publication or are available on request. For details see the Explanatory notes.</p>	
PART 2. GOVERNMENT EMPLOYMENT	
Explanatory notes	31
Government employees (excluding Agriculture and services to agriculture)—	
29. Australia	32
30. States	33
31. Northern Territory	35
32. Australian Capital Territory	35
33. Commonwealth Government Employees, June 1983	36
<p>NOTE. Statistics of government employment are included in this publication for the last time. In future, these statistics will be published on a quarterly basis in two new publications entitled <i>Employed Wage and Salary Earners, Preliminary</i> (6247.0), and <i>Employed Wage and Salary Earners, Australia</i> (6248.0). The preliminary publication is expected to be released for the first time in December 1983.</p>	
PART 3. JOB VACANCIES	
34. Job Vacancies, August 1983	38
<p>NOTE. Estimates of job vacancies are included in this publication for the last time. In future, these statistics will only be published on a quarterly basis in <i>Job Vacancies, Australia</i>, (6231.0).</p>	

PART 1. LABOUR FORCE ESTIMATES

EXPLANATORY NOTES

Introduction

This part contains estimates of the civilian labour force derived from the labour force survey part of the population survey, which is now conducted monthly. Until February 1978, surveys were conducted in February, May, August and November each year.

2. Preliminary survey results are published in advance of this more detailed publication in *The Labour Force, Australia (Preliminary Estimates)* (6202.0).

3. Although emphasis in the population survey is placed on the regular collection of specific data on demographic and labour force characteristics of the population, supplementary and special surveys of particular aspects of the labour force or of other subjects are carried out from time to time. Statistics from these surveys are published and are available on request. A list of survey publications on labour force and related topics is shown later in this publication.

The population survey

4. The population survey is based on a multi-stage area sample of private dwellings (about 33,000 houses, flats, etc.) and non-private dwellings (hotels, motels, etc.), and covers about two-thirds of one per cent of the population of Australia. The information is obtained from the occupants of selected dwellings by carefully chosen and specially trained interviewers. The interviews are generally conducted during the two weeks beginning on the Monday between the 6th and 12th of each month. The information obtained relates to the week before the interview (i.e. the survey week). Because of operational problems arising from the Christmas and New Year holidays the December 1978 and 1979 surveys commenced a week earlier than usual (with most interviews being conducted during the second week) and the January 1979 and 1980 surveys commenced a week later than usual.

Scope

5. The labour force survey includes all persons aged 15 and over except:

- (a) members of the permanent defence forces;
- (b) certain diplomatic personnel of overseas governments, customarily excluded from census and estimated populations;
- (c) overseas residents in Australia; and
- (d) members of non-Australian defence forces (and their dependants) stationed in Australia.

Definitions

6. The labour force category to which a person is assigned depends on his *actual activity* (i.e. whether working, looking for work, etc.) during the survey week. The following definitions, which conform closely to the international standard definitions specified by the International Labour Organisation (ILO), relate only to those persons within the scope of the survey.

7. *Employed persons* comprise all those aged 15 and over who, during the survey week:

- (a) worked for one hour or more for pay, profit, commission or payment in kind in a job or business, or on a farm (including employees, employers and self-employed persons); or
- (b) worked for 15 hours or more without pay in a family business or on a farm (i.e. unpaid family helpers); or
- (c) were employees who had a job but were not at work and were: on paid leave; on leave without pay for less than four weeks up to the end of the survey week; stood down without pay because of bad weather or plant breakdown at their place of employment for less than four weeks up to the end of the survey week; on strike or locked out; on workers' compensation and expected to be returning to their job; or receiving wages or salary while undertaking full-time study; or
- (d) were employers or self-employed persons who had a job, business or farm, but were not at work.

8. The *employment/population ratio* for any group is the number of employed persons expressed as a percentage of the civilian population aged 15 and over in the same group.

9. *Unemployed persons* are those aged 15 and over who were not employed during the survey week, and

- (a) had actively looked for full-time or part-time work at any time in the four weeks up to the end of the survey week and:
 - (i) were available for work in the survey week, or would have been available except for temporary illness (i.e. lasting for less than four weeks to the end of the survey week); or
 - (ii) were waiting to start a new job within four weeks from the end of the survey week and would have started in the survey week if the job had been available then;

or (b) were waiting to be called back to a full-time or part-time job from which they had been stood down without pay for less than four weeks up to the end of the survey week (including the whole of the survey week) for reasons other than bad weather or plant breakdown.

10. *Actively looking for work* includes writing, telephoning or applying in person to an employer for work; answering a newspaper advertisement for a job; checking factory or Commonwealth Employment Service noticeboards; being registered with the Commonwealth Employment Service; checking or registering with any other employment agency; advertising or tendering for work; and contacting friends or relatives. In November 1981 a number of minor amendments were made to the labour force survey questionnaire. (For details see the information paper *Questionnaires Used in the Labour Force Survey, December 1981* (6232.0)). The amendments

included a re-ordering and some re-wording of the categories of steps taken to find work. Consequently, there is a discontinuity in estimates of active steps taken to find work between October and November 1981. The active steps were asked in the order shown in the table in this publication showing unemployed persons classified by active steps taken, and since only one response was recorded for each person asked this particular question, the estimates do not reflect the relative importance of the steps taken to find work.

11. *Unemployed persons looking for first job* are those who had never worked full time for two weeks or more. Prior to November 1977 it comprised persons who had never had a job.

12. The *unemployment rate* for any group is the number unemployed expressed as a percentage of the labour force (i.e. employed plus unemployed) in the same group.

13. *Duration of unemployment* is the period from the time the person began looking for work or was laid off to the end of the survey week. Periods of unemployment are recorded in complete weeks and this results in a slight understatement of duration. *Average (mean) duration* is the duration obtained by dividing the aggregate number of weeks a group has been unemployed by the number of persons in that group. *Median duration* is the duration which divides unemployed persons into two equal groups, one comprising persons whose duration of unemployment is above the median and the other, persons whose duration is below it.

14. *Unemployed persons classified by industry and occupation.* Unemployed persons who had worked full time for two weeks or more in the last two years are classified according to the industry and occupation of their most recent full-time job. *Unemployment rates* by industry and occupation are only available for February, May, August and November (see paragraph 53).

15. The *labour force* comprises all persons who, during the survey week, were employed or unemployed, as defined above.

16. The *labour force participation rate* for any group is the labour force expressed as a percentage of the civilian population aged 15 and over in the same group. Because it is not practicable to ascertain the birthplace of persons in institutions (who are classified as not in the labour force), labour force participation rates for persons classified by birthplace are calculated by using population estimates which exclude those in institutions.

17. *Full-time workers* are those who usually work 35 hours or more a week and others who, although usually part-time workers, worked 35 hours or more during the survey week. *Part-time workers* are those who usually work less than 35 hours a week and who did so during the survey week. When recording hours of work, fractions of an hour are disregarded.

18. *Hours of work.* The figures of aggregate hours and of average hours refer to actual hours worked during the survey week, not hours paid for. The figures may be affected by public holidays, leave, absenteeism; temporary absence from work due to sickness, injury, accident and industrial disputes; and stoppages of work due to bad weather, plant breakdown, etc. When hours of work are recorded, fractions of an hour are disregarded and this results in slightly lower figures than would be the case if actual time worked was recorded. Persons stood down for the whole of the survey week without pay because of bad weather or plant breakdown at their place of employment are regarded as employed and therefore are included (working no hours) in the calculation of average hours worked. Persons stood down in the survey week for reasons other than bad weather and plant breakdown and waiting to be called back to their job are regarded as unemployed and are therefore excluded from the calculations.

19. *Persons attending school* comprise those aged 15 to 20 who, during the survey week, were enrolled full time at secondary or high schools. Excluded are persons who were enrolled at universities, colleges of advanced education, technical colleges, other tertiary educational institutions, and coaching and business schools. Persons attending school are classified as in the labour force if they were employed or unemployed as defined above. Because it is not practicable to ascertain from persons in institutions (who are classified as not in the labour force) whether or not they are enrolled at secondary or high schools, such persons are excluded from estimates classified by school attendance.

20. *Persons not in the labour force* are those who, during the survey week, were not in the categories employed or unemployed, as defined above. They include persons who were keeping house (unpaid), attending an educational institution (school, university, etc.), retired, voluntarily inactive, permanently unable to work, inmates of institutions (hospitals, gaols, sanatoria, etc.), trainee teachers, members of contemplative religious orders, and persons whose only activity during the survey week was jury service or unpaid voluntary work for a charitable organisation.

Marital status

21. In the labour force survey, persons are classified as *married* or *not married*. The former category includes persons who are separated, while the latter category includes persons who, at the time of the survey, had never married, or were widowed, or divorced. However, the marital status to which a person is assigned depends upon the information given by the respondent, and does not necessarily reflect legal status. Prior to October 1982, respondents who stated they were living in a de facto arrangement were asked how they would describe their marital status on a Population Census schedule and the answer was recorded. From October 1982 these respondents were coded as married. This may have resulted in some discontinuity between September and October 1982 in series classified according to marital status.

Status of worker

22. The February, May, August and November issues of this publication include a table showing estimates of employed persons, obtained from the labour force survey, classified by status of worker i.e. whether they were employers, self-employed persons, wage and salary earners (employees), or unpaid family helpers (who worked 15 hours or more in the survey week).

Classification of industry and occupation

23. Industry is classified according to the *Australian Standard Industrial Classification (ASIC) 1978* (1201.0 and 1202.0) and occupation according to the *Classification and Classified List of Occupations, Revised June 1981*.

State capital cities

24. The areas determining the six State capital cities are the Statistical Divisions for those capital cities defined in *Census of Population and Housing 1976, Population and Dwellings in Local Government Areas and Urban Centres (Preliminary)* (2401.0-2408.0). Capital City Statistical Divisions are predominantly urban in character and the boundaries are delineated to contain the anticipated urban development of the capital cities (and associated urban centres) for a period of at least 20 years.

Population benchmarks

25. The population survey estimates are calculated in such a way as to conform to the independently estimated distribution of the population aged 15 and over by age and sex. These independent estimates (benchmarks) are necessarily derived from incomplete information about population changes (deaths, internal and overseas migration) and can differ from estimates of the population subsequently published by the ABS. For estimates of the population and other demographic statistics reference should be made to *Australian Demographic Statistics Quarterly* (3101.0).

Revision of series

26. Survey estimates are not revised for the usually small amendments of population benchmarks arising from new data on deaths and overseas and internal migration. Revisions are made, however, after each census and when population estimation bases are reviewed. Survey estimates back to August 1966 have been recalculated to conform to revised population estimates. The revised estimates take account of results of the 1966, 1971 and 1976 Censuses of Population and Housing, including estimates of under-enumeration, and incorporate a revised method of measuring overseas migration gain (i.e. by excluding movements of less than one year's duration). For information concerning these population estimates for the period June 1971 to June 1977 see *Population and Vital Statistics, Australia, June Quarter 1977* (3212.0).

27. A new sample and revised questionnaire were introduced for the February 1978 survey. The new sample was selected in order to reflect the changes in the distribution of the population shown by the 1976 Population Census results. The questionnaire, which had undergone little change since 1960, except for the inclusion in 1975 of additional questions on job-seeking, was revised to provide more accurate and more detailed information concerning the labour force. A new sample, which was selected following the 1981 Census of Population and Housing, was introduced for the October 1982 survey (see paragraphs 34 and 35).

28. Details of the changes made to the questionnaire in February 1978 and the reasons for the changes are contained in *Information Paper: Questionnaires Used in the Labour Force Survey, March 1978* (6232.0). In November 1981 a number of additional minor amendments were made to the questionnaire (see paragraph 10) and these are outlined in a December 1981 issue of the above information paper, 6232.0.

29. Estimates for the period August 1966 to November 1977 have been revised in order to provide a series for earlier periods as comparable as possible with the February 1978 and later estimates. For periods prior to August 1976, detailed revised estimates are available only for August of each year. For February, May and November only broad revised aggregates (as in Table 1) are available. Revised estimates have been published in *The Labour Force, Australia, 1978* (6204.0), which also contains information concerning the methods used in the revision.

Comparability of series

30. When comparing estimates for February 1978 and subsequent months with those for earlier periods, it should be noted that with the introduction of monthly surveys the interviews are now conducted during a two-week period, whereas formerly the period was four weeks. This change of timing may affect the level of the figures for any month, particularly for months during which the labour force status of the population may be changing rapidly.

31. Because of the revisions mentioned above, the estimates in this publication are not comparable with those shown in issues before February 1978 or in the publications entitled *The Labour Force, Australia* (6204.0) covering the period 1964 to 1977.

32. From September 1979, industry estimates in labour force survey publications have been classified according to the 1978 version of the Australian Standard Industrial Classification (ASIC). The estimates are therefore not strictly comparable with those for periods prior to September 1979, which were classified according to the 1969 version of ASIC.

Survey sample

33. For detailed information on sample design and selection see the Technical note in *The Labour Force, Australia, 1978* (6204.0).

34. The population survey sample was reselected after the 1971 and 1976 Censuses of Population and Housing to allow data from the latest census to be used to improve the efficiency of the population survey sample design. The reselection following the 1981 Census has been completed, and a new sample in all States and Territories was introduced for the October 1982 survey. While estimates from two different samples may differ purely due to chance, the old (i.e. pre-October) and new samples are based on almost identical methods of stratification and selection, and there is only a small probability that the published October estimates differ significantly from the estimates that would have been produced if the old sample had been retained.

35. In reselecting the survey sample, the sampling fractions for States and Territories were not altered except for Western Australia. Because the population of that State was expected to overtake that of South Australia during the intercensal period, it was decided to make the sampling fraction for Western Australia 1 in 100, the same as for South Australia, instead of 1 in 90 as previously. This resulted in a slight increase in the standard errors of estimates for Western Australia.

36. Because of the introduction of the new sample of dwellings in October 1982 (see paragraph 34), there was not the usually high proportion of dwellings common to each of two consecutive surveys and the standard errors of movements between September and October 1982 are therefore higher than normal. (See Technical note.)

Reliability of the estimates

37. Estimates in this publication are subject to two sources of error:

- (a) sampling error: since the estimates are based on information obtained from occupants of a sample of dwellings they, and the movements derived from them, may differ from the figures that would have been produced if all dwellings had been included in the survey. More information on this topic is given in the Technical note.
- (b) non-sampling error: inaccuracies may occur because of imperfections in reporting by respondents and interviewers and errors made in the coding and processing of data. These inaccuracies may occur in any enumeration, whether it be a full count or a sample. Every effort is made to reduce the non-sampling error to a minimum by careful design of questionnaires, intensive training and supervision of interviewers and efficient operating procedures.

Differences between population census and population survey estimates

38. The results of the 1981 Census of Population and Housing show that labour force figures derived from the census differ from estimates derived from the population surveys of May and August 1981.

39. The labour force definition used in the census is similar to that used in the survey (see paragraphs 6 to 19). However, evidence from census post-enumeration surveys indicates that the personal interview approach, as used in the population survey, tends to identify a larger number of persons as being in the labour force than does the filling in of the questions on the census schedule by the householder. In addition, the post-enumeration survey following the 1981 Population Census showed an under-enumeration of the population of 1.9 per cent. It has not been possible to adjust the published census labour force figures for any under-enumeration.

40. In the 1971, 1976 and 1981 Population Censuses the minor occupation group 'Architects, engineers, surveyors, professional' was limited solely to persons holding a university degree. Other persons describing themselves in professional terms but not holding a degree were classified to minor group 'Draftsmen and technicians, n.e.c.'. Information to enable this distinction to be made in the labour force survey is not available.

41. These considerations should be borne in mind if comparisons are made between population census and labour force survey estimates.

Seasonal adjustment

42. Seasonally adjusted series are published in Table 2. The figures in this table were revised in the December 1982 issue of this publication. As happens with all seasonally adjusted series, the seasonal factors are reviewed annually, the latest review being in February 1983 which revised the monthly series back to February 1978. Information about the method of adjustment and seasonally adjusted figures for all months since February 1978 are published in an appendix to the February 1983 issue of this publication.

43. The seasonal adjustment factors have been calculated on the basis of five years of monthly data. This is a relatively short series of data on which to base the calculation of seasonal factors particularly when the pattern of movement is changing from year to year. This changing pattern is most marked in the unemployment figures where the large increases in recent months may be accompanied by changes in the seasonal patterns which will not become apparent until later years. As a result the current seasonal adjustment might prove to be inadequate or need to be substantially revised. Care should be exercised in interpreting current movements based on these seasonally adjusted estimates.

Gross flows

44. In order to minimise respondent burden and at the same time maintain continuity within the population survey sample, one eighth of the dwellings in the sample (except the large non-private dwellings) are replaced after each survey. Adoption of this rotation procedure, whereby about seven eighths of the sample remains unchanged from one month to the next, enables more reliable measurements of changes in the labour force characteristics of the population to be made than would be possible if a new sample were introduced each month.

45. Because a high proportion of private dwellings selected in one survey remains in the sample for the following survey, it is possible to match the characteristics of most of the persons in those dwellings from one month to the next, to record any changes that occur, and hence to produce estimates of *flows* between the different categories of the population and labour force.

46. The procedures used to select persons in non-private dwellings preclude the possibility of matching any of them who may be included in successive surveys. For this and other reasons, including the mobility of the population and non-response in either or both surveys, about 10 per cent of persons in those dwellings which are included in the sample in successive months cannot be matched. Those who can be matched represent about 80 per cent of all persons in the survey.

47. Changes in the characteristics of this latter group are shown in the gross flows table. About one half of the remaining (unmatched) 20 per cent of persons in the survey are likely to have characteristics similar to those in the matched group, but the characteristics of the other half are likely to be somewhat different.

48. Gross flow estimates relate only to those persons in private dwellings for whom information was obtained in successive surveys. The expansion factors used in calculating the estimates were those applying to the second of each pair of months.

49. Although it is not possible to provide gross flow estimates for all persons in the survey it is considered that the estimates derived from matched records will be a useful guide to the magnitude of the movements between categories which underlie the changes in monthly levels. When comparing flows for different periods it is important to take into account the population represented by the matched sample, as shown in the last line of the table.

50. While every effort is made to reduce non-sampling errors to a minimum, any such errors affecting labour force status will tend to accumulate in the gross flow statistics rather than to cancel out. The estimates are also subject to sampling variability, as explained in the Technical note. For these reasons the estimates of flows should be used with caution. The standard errors may be obtained from Table A of the Technical note.

51. Estimates of total flows into or out of the employed category may be less than the sum of the estimates for employed full time and employed part time as the estimates for the latter two categories include movements between these two categories.

52. As the October 1982 labour force estimates were based on an entirely new survey sample (see paragraphs 33 to 36), statistics of gross flows between September and October 1982 are not available.

Additional data

53. Estimates for employed persons classified by industry, occupation and status of worker are available each February, May, August and November, and the following tables are published in issues of this publication for those months.

Employed persons—
 Industry and occupation—
 Full-time and part-time workers
 Status of worker
 Age and birthplace
 Hours worked
 Industry by occupation
 Industry subdivisions
 Major and minor occupation groups

Prior to August 1982 statistics of employed persons by industry and occupation were not published in the same detail each quarter but were included on a rotational basis. For details see the July 1982 issue of this publication.

54. The availability of these extra tables also enables publication of unemployment rates for persons classified by industry and occupation for these same months. Other unpublished data from labour force surveys may be available on request.

Related publications

55. Users may also wish to refer to the following publications which relate to the labour force and are available on request:

Unemployment, Australia (Preliminary Estimates) (6201.0)—final issue December 1982

The Labour Force, Australia (Preliminary Estimates) (6202.0)—issued monthly

The Labour Force, Australia, 1981 (6204.0) (\$1.50, \$2.20 incl. postage)

Unemployment, Underemployment and Related Statistics, Australia, February 1978 to February 1980 (6236.0)

The Labour Force, New South Wales (6201.1)—issued quarterly

The Labour Force, Victoria (6201.2)—issued monthly

The Labour Force, Queensland (6201.3)—issued quarterly

The Labour Force, South Australia (6201.4)—issued quarterly

Civilian Employees, Australia (6213.0)—latest issue: April 1980

Job Vacancies, Australia (6231.0)—issued quarterly

Information Paper: Questionnaires used in the Labour Force Survey, December 1981 (6232.0)

Information Paper: Review of ABS Employment Statistics (6239.0)

Overtime, Australia (6330.0)—issued quarterly

Supplementary and special survey publications on labour force and related topics are listed after the Technical note.

56. Current publications produced by the ABS are listed in the *Catalogue of Publications, Australia* (1101.0). The ABS also issues, on Tuesdays and Fridays, a *Publications Advice* (1105.0) which lists publications to be released in the next few days. The Catalogue and Publications Advice are available from any ABS office.

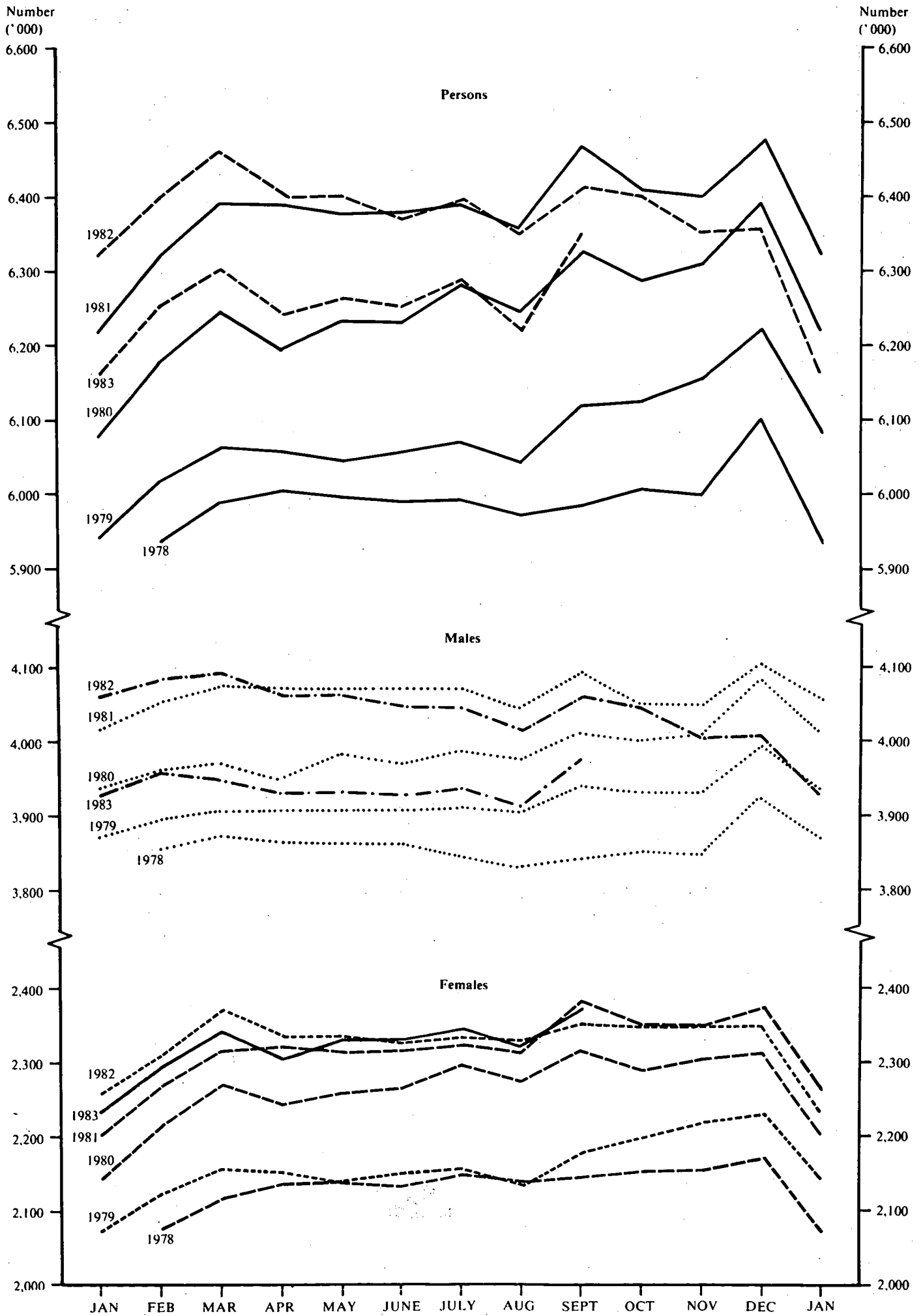
Symbols and other usages

- * subject to sampling variability too high for most practical uses. See paragraph 6 of the Technical note
- n.a. not available
- .. not applicable
- n.e.c. not elsewhere classified
- r revised since previous issue

57. Figures have been rounded and discrepancies may occur between sums of the component items and totals.

R. J. CAMERON
 Australian Statistician

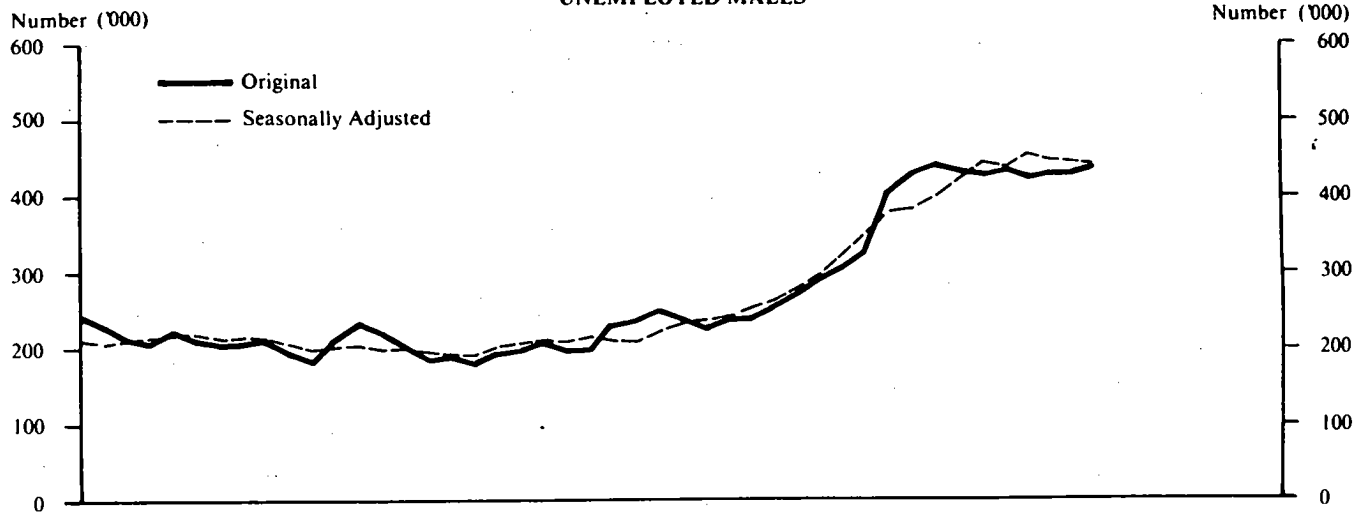
EMPLOYED PERSONS



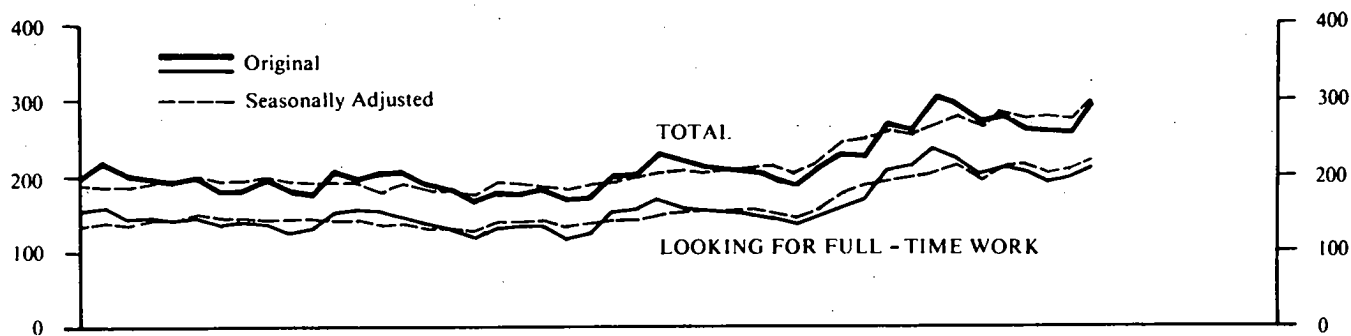
EMPLOYED PERSONS



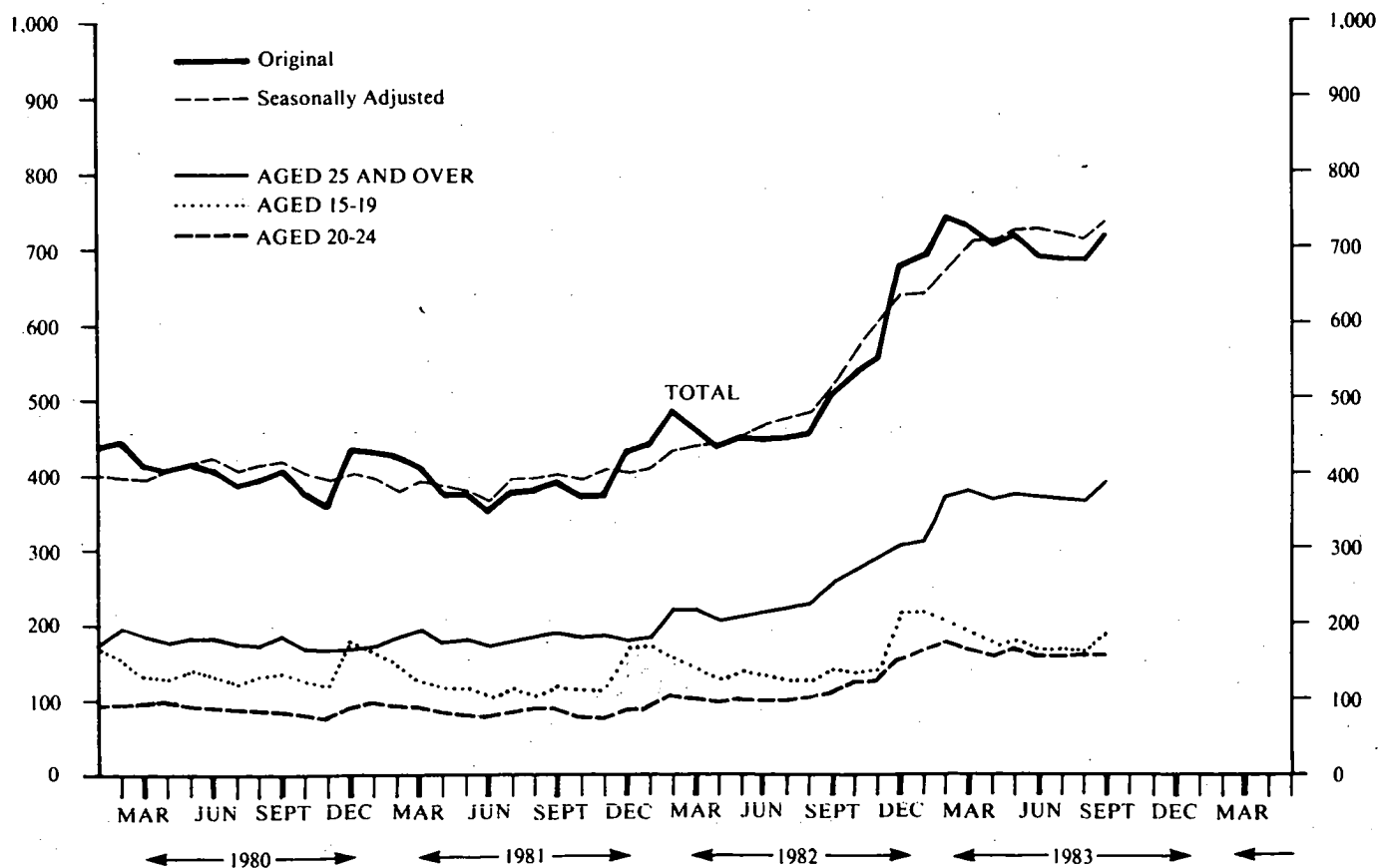
UNEMPLOYED MALES



UNEMPLOYED FEMALES

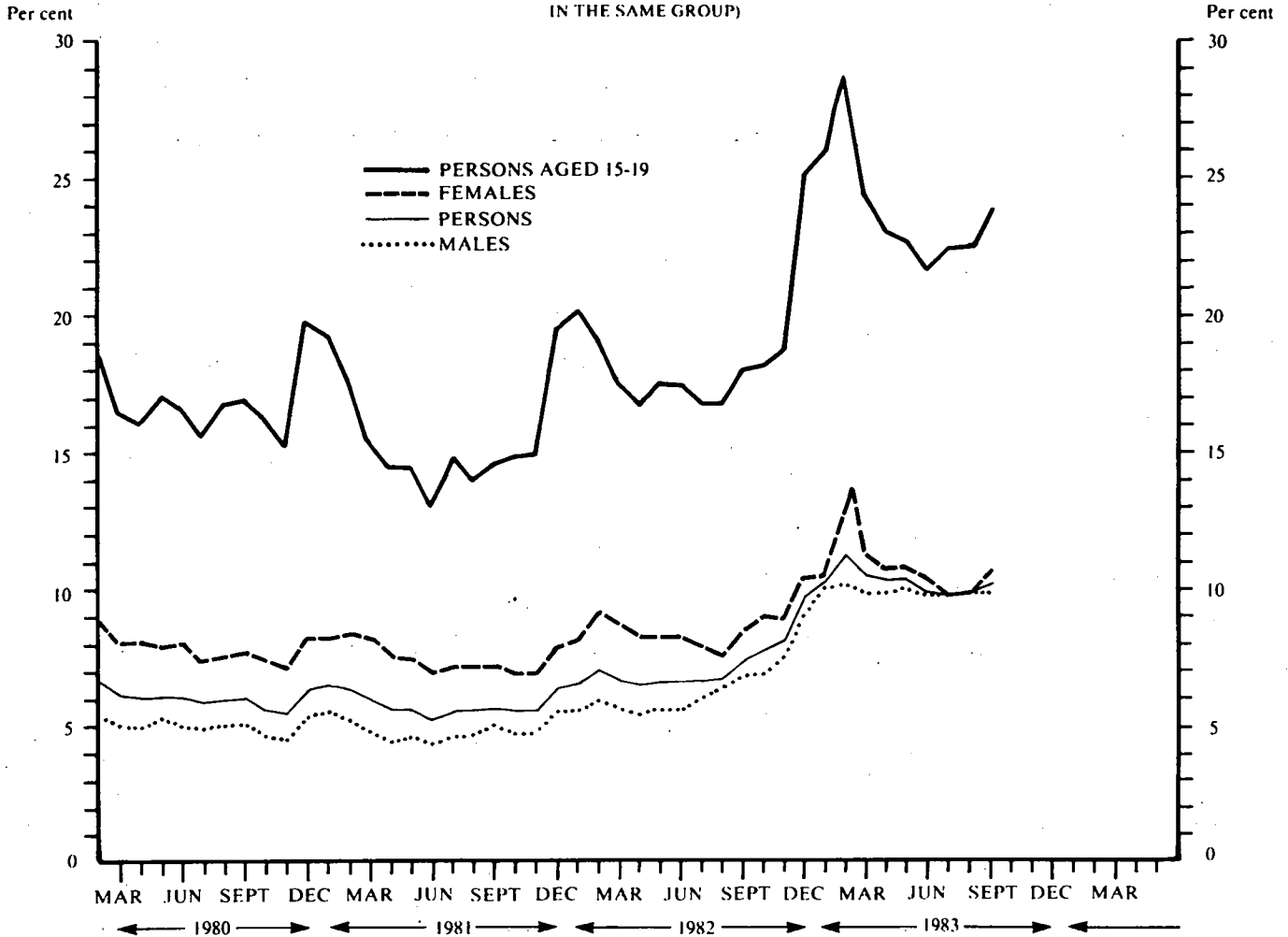


UNEMPLOYED PERSONS



UNEMPLOYMENT RATES

(THE UNEMPLOYED IN EACH GROUP AS A PERCENTAGE OF THE CIVILIAN LABOUR FORCE
IN THE SAME GROUP)



LABOUR FORCE PARTICIPATION RATES

(THE LABOUR FORCE IN EACH GROUP AS A PERCENTAGE OF THE CIVILIAN POPULATION
AGED 15 AND OVER IN THE SAME GROUP)

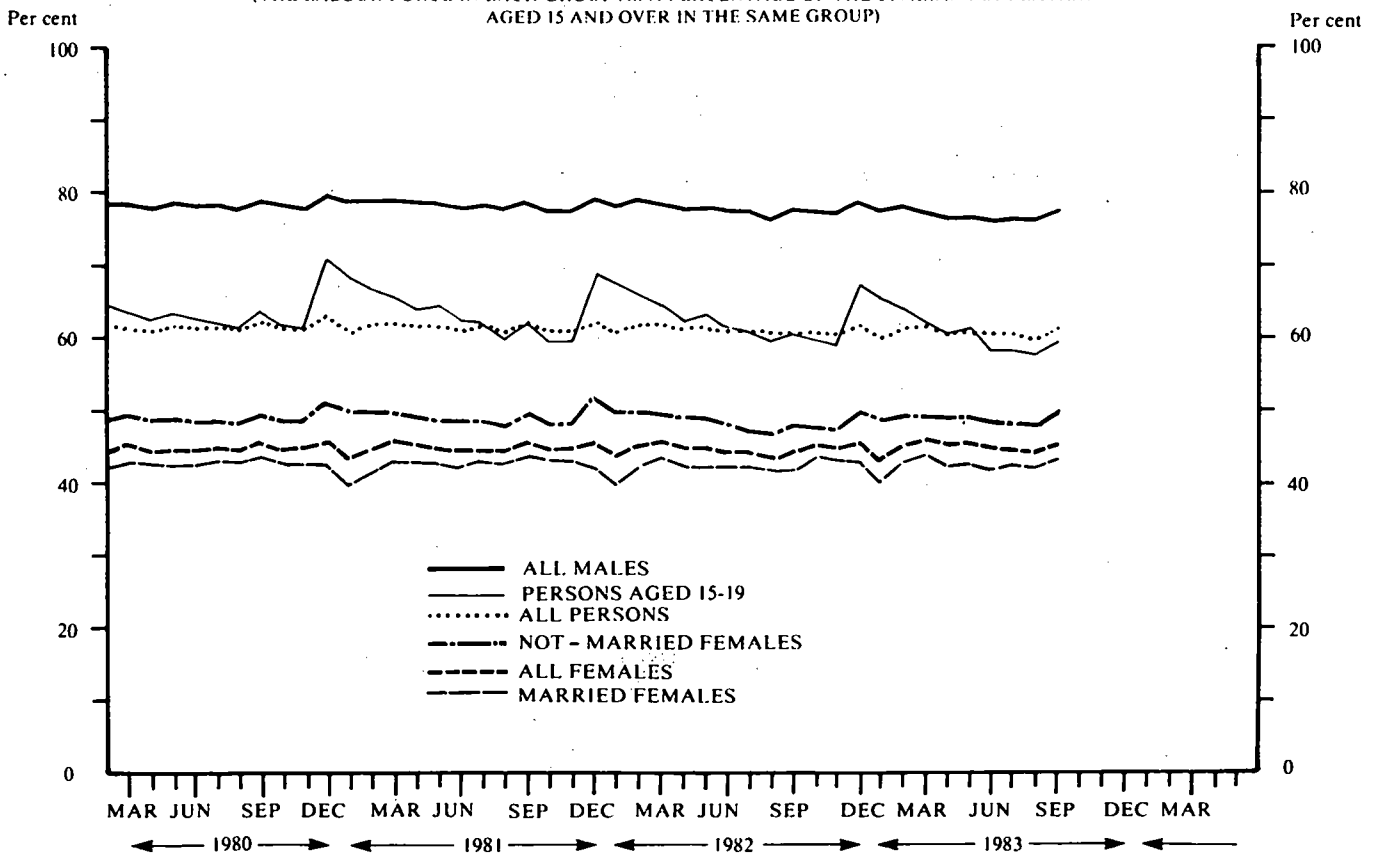


TABLE 1. LABOUR FORCE STATUS OF THE CIVILIAN POPULATION AGED 15 AND OVER

Month	Employed		Unemployed		Looking for part-time work		Labour force	Not in labour force	Civilian population aged 15 and over	Unemployment rate	Participation rate
	Full-time workers	Total	Aged 15-19 looking for first job	Total	Looking for part-time work	Total					
- '000 -											
- per cent -											
MALES											
1982 -											
August	3,775.5	4,016.4	17.3	249.9	21.2	271.0	4,287.5	1,308.0	5,595.5	6.3	76.6
September	3,822.6	4,059.2	20.7	271.6	22.2	293.7	4,352.9	1,253.6	5,606.5	6.7	77.6
October	3,792.5	4,047.3	19.1	286.6	20.6	307.3	4,354.6	1,263.7	5,618.2	7.1	77.5
November	3,754.2	4,004.3	20.7	313.5	13.4	326.9	4,331.2	1,297.3	5,628.5	7.5	77.0
December	3,766.6	4,007.7	46.5	378.4	26.3	404.7	4,412.4	1,227.0	5,639.4	9.2	78.2
1983 -											
January	3,706.0	3,929.8	51.3	409.2	22.3	431.5	4,361.3	1,290.0	5,651.3	9.9	77.2
February	3,730.2	3,959.2	45.0	418.2	23.1	441.3	4,400.6	1,261.7	5,662.3	10.0	77.7
March	3,700.2	3,951.9	34.2	412.2	23.0	435.3	4,387.2	1,285.9	5,673.0	9.9	77.3
April	3,683.2	3,934.3	28.3	407.2	23.4	430.6	4,364.9	1,315.6	5,680.5	9.9	76.8
May	3,686.8	3,932.7	28.3	413.4	22.6	436.0	4,368.7	1,320.5	5,689.2	10.0	76.8
June	3,689.7	3,930.4	24.5	408.2	16.6	424.8	4,355.2	1,342.8	5,698.0	9.8	76.4
July	3,703.5	3,939.5	28.1	407.5	21.9	429.4	4,368.9	1,337.9	5,706.8	9.8	76.6
August	3,670.3	3,910.8	26.6	409.5	20.2	429.7	4,340.5	1,375.1	5,715.5	9.9	75.9
September	3,748.0	3,979.6	30.8	410.7	24.7	435.3	4,415.0	1,310.7	5,725.7	9.9	77.1
Standard error of -											
September 1983											
estimates	13.6	13.9	2.4	6.7	2.2	6.8	14.3	9.9	..	0.2	0.2
Aug 83 to Sept 83											
movements	9.6	9.7	2.3	5.3	2.1	5.4	10.0	7.5	..	0.1	0.2
MARRIED FEMALES											
1982 -											
August	783.5	1,429.4	*	42.1	34.9	76.9	1,506.3	2,072.4	3,578.7	5.1	42.1
September	800.2	1,442.6	*	50.0	39.4	89.5	1,532.1	2,049.3	3,581.3	5.8	42.8
October	810.2	1,482.6	*	52.6	47.2	99.8	1,582.4	2,052.4	3,634.8	6.3	43.5
November	804.6	1,465.6	*	60.9	34.3	95.2	1,560.8	2,065.0	3,625.9	6.1	43.0
December	802.3	1,460.2	*	64.0	34.6	98.6	1,558.8	2,086.1	3,644.9	6.3	42.8
1983 -											
January	792.3	1,370.9	*	60.2	124.5	84.7	1,455.5	2,192.3	3,647.8	5.8	39.9
February	780.5	1,430.3	*	78.7	48.0	126.7	1,556.9	2,105.0	3,661.9	8.1	42.5
March	797.7	1,472.4	*	81.0	46.4	127.4	1,599.7	2,068.6	3,668.3	8.0	43.6
April	784.6	1,426.3	*	74.3	44.5	118.9	1,545.2	2,116.8	3,661.9	7.7	42.2
May	797.5	1,447.9	*	77.7	44.7	122.4	1,570.3	2,114.2	3,684.5	7.8	42.6
June	791.4	1,443.1	*	77.9	40.4	118.4	1,561.4	2,136.4	3,697.9	7.6	42.2
July	803.8	1,446.2	*	71.7	46.0	117.7	1,563.9	2,123.5	3,687.3	7.5	42.4
August	788.4	1,435.5	*	73.1	36.8	109.9	1,545.4	2,152.4	3,697.8	7.1	41.8
September	819.8	1,460.0	*	80.0	46.2	126.2	1,586.2	2,109.0	3,695.2	8.0	42.9
Standard error of -											
September 1983											
estimates	8.5	10.2	0.3	3.6	2.8	4.3	10.5	11.5	..	0.3	0.3
Aug 83 to Sept 83											
movements	6.5	7.6	0.5	3.2	2.7	3.7	7.7	8.4	..	0.2	0.2

TABLE 1. LABOUR FORCE STATUS OF THE CIVILIAN POPULATION AGED 15 AND OVER (continued)

Month	Employed		Unemployed		Looking for full-time work		Labour force	Not in labour force	Civilian population aged 15 and over	Unemployment rate	Participation rate
	Full-time workers	Total	Aged 15-19 looking for first job	Total	Looking for part-time work	Total					
- '000 -											
- per cent -											
ALL FEMALES											
1982 -											
August	1,487.8	2,331.1	17.7	135.6	51.9	187.5	2,518.6	3,213.3	5,731.9	7.4	43.9
September	1,514.3	2,355.0	16.4	149.1	63.1	212.7	2,567.1	3,175.7	5,742.9	8.3	44.7
October	1,490.5	2,352.8	18.7	158.4	71.2	229.6	2,582.4	3,171.8	5,754.2	8.9	44.9
November	1,491.4	2,346.3	21.4	170.4	54.7	225.1	2,571.4	3,193.4	5,764.8	8.8	44.6
December	1,492.0	2,349.1	47.6	206.8	62.4	269.2	2,618.4	3,157.0	5,775.4	10.3	45.3
1983 -											
January	1,475.7	2,234.9	48.6	216.2	43.9	260.2	2,495.1	3,290.9	5,786.0	10.4	43.1
February	1,465.3	2,295.8	45.5	234.7	71.3	305.9	2,601.7	3,194.9	5,796.6	11.8	44.9
March	1,482.9	2,348.9	37.8	223.8	72.6	296.4	2,645.3	3,161.6	5,806.9	11.2	45.6
April	1,478.4	2,308.9	31.9	203.2	73.3	276.6	2,585.4	3,229.1	5,814.5	10.7	44.5
May	1,491.4	2,328.9	32.7	212.6	70.0	282.5	2,611.4	3,212.0	5,823.4	10.8	44.8
June	1,477.6	2,324.3	30.1	203.8	62.4	266.2	2,590.5	3,241.8	5,832.3	10.3	44.4
July	1,505.2	2,345.0	26.7	190.1	65.2	255.3	2,600.4	3,240.8	5,841.2	9.8	44.5
August	1,475.9	2,321.8	28.1	195.7	58.7	254.4	2,576.3	3,273.8	5,850.0	9.9	44.0
September	1,534.7	2,370.3	33.2	207.0	76.4	283.4	2,653.7	3,206.5	5,860.2	10.7	45.3
Standard error of - September 1983 estimates	10.4	11.9	2.5	5.2	3.5	5.8	12.3	13.0	..	0.2	0.2
Aug 83 to Sept 83 movements	7.7	8.6	2.4	4.3	3.2	4.8	8.8	9.3	..	0.2	0.2
PERSONS											
1982 -											
August	5,263.3	6,347.6	34.9	385.4	73.1	458.5	6,806.0	4,521.3	11,327.4	6.7	60.1
September	5,336.8	6,414.2	37.1	420.6	85.2	505.9	6,920.0	4,429.3	11,349.3	7.3	61.0
October	5,283.0	6,400.1	37.8	445.1	91.8	536.8	6,937.0	4,435.5	11,372.5	7.7	61.0
November	5,245.5	6,350.6	42.1	483.9	68.1	552.0	6,902.6	4,490.7	11,393.3	8.0	60.6
December	5,258.6	6,336.9	94.1	585.2	88.8	674.0	7,030.8	4,384.0	11,414.8	9.6	61.6
1983 -											
January	5,181.7	6,164.7	99.9	625.5	66.2	691.7	6,856.4	4,580.9	11,437.3	10.1	59.9
February	5,195.5	6,255.0	90.4	652.9	94.4	747.3	7,002.2	4,456.6	11,458.9	10.7	61.1
March	5,183.0	6,300.8	72.0	636.0	95.6	731.6	7,032.4	4,447.5	11,479.9	10.4	61.3
April	5,161.6	6,243.2	60.2	610.4	96.7	707.2	6,950.3	4,344.7	11,495.0	10.2	60.5
May	5,178.2	6,261.6	61.0	626.0	92.6	718.6	6,980.1	4,332.5	11,512.7	10.3	60.6
June	5,167.3	6,254.7	54.6	612.0	79.0	691.1	6,945.7	4,384.6	11,530.3	9.9	60.2
July	5,208.7	6,284.5	54.7	597.7	87.1	684.8	6,969.3	4,378.7	11,547.9	9.8	60.4
August	5,146.2	6,232.7	54.8	605.2	78.9	684.1	6,916.7	4,648.8	11,565.6	9.9	59.8
September	5,282.7	6,350.0	64.0	617.6	101.1	718.7	7,068.7	4,517.2	11,585.9	10.2	61.0
Standard error of - September 1983 estimates	15.0	15.8	3.3	7.7	3.9	8.1	16.3	14.4	..	0.1	0.1
Aug 83 to Sept 83 movements	10.4	10.8	3.0	6.0	3.5	6.3	11.1	10.1	..	0.1	0.1

TABLE 2. CIVILIAN LABOUR FORCE: SEASONALLY ADJUSTED SERIES

Month	Employed	Unemployed		Total	Total	Labour force	Unemployment rate	Participation rate
		Looking for full-time work						
		Aged 15-19 looking for first job	Total					
- '000 -								
- per cent -								
MALES								
1982 -								
August	4,040.4	23.5	257.7	23.1	280.8	4,321.2	6.5	77.2
September	4,048.0	23.8	274.6	22.9	297.5	4,345.5	6.8	77.5
October	4,050.3	22.1	305.3	21.3	326.6	4,376.9	7.5	77.9
November	4,020.2	23.8	336.7	16.8	353.5	4,373.7	8.1	77.7
December	3,971.5	26.5	360.7	18.9	379.6	4,351.1	8.7	77.2
1983 -								
January	3,952.1	31.5	363.1	21.6	384.7	4,336.8	8.9	76.7
February	3,958.2	32.9	377.6	24.0	401.6	4,359.8	9.2	77.0
March	3,935.4	34.5	406.0	21.0	427.0	4,362.5	9.8	76.9
April	3,929.5	37.0	421.3	24.8	446.1	4,375.6	10.2	77.0
May	3,933.5	35.6	418.5	21.2	439.7	4,373.2	10.1	76.9
June	3,934.9	36.2	432.3	18.3	450.6	4,385.5	10.3	77.0
July	3,944.3	41.0	422.3	23.2	445.5	4,389.7	10.1	76.9
August	3,932.3	36.4	420.5	21.9	442.5	4,374.8	10.1	76.5
September	3,967.1	35.4	414.2	25.5	439.7	4,406.8	10.0	77.0
MARRIED FEMALES								
1982 -								
August	1,429.6	..	42.7	37.9	80.6	1,510.2	5.3	42.2
September	1,427.7	..	48.9	38.6	87.5	1,515.2	5.8	42.3
October	1,464.4	..	56.3	43.2	99.5	1,563.9	6.4	43.0
November	1,443.3	..	61.4	36.8	98.2	1,541.5	6.4	42.5
December	1,452.8	..	70.0	37.3	107.3	1,560.1	6.9	42.8
1983 -								
January	1,453.0	..	66.8	33.8	100.6	1,553.6	6.5	42.6
February	1,455.6	..	69.5	40.3	109.8	1,565.4	7.0	42.7
March	1,455.9	..	72.2	41.1	113.3	1,569.1	7.2	42.8
April	1,420.6	..	70.4	43.1	113.6	1,534.2	7.4	41.9
May	1,440.3	..	77.8	42.2	120.1	1,560.4	7.7	42.4
June	1,442.4	..	81.3	38.9	120.2	1,562.6	7.7	42.3
July	1,435.4	..	73.1	49.5	122.7	1,558.1	7.9	42.3
August	1,435.6	..	74.2	40.0	114.2	1,549.8	7.4	41.9
September	1,444.6	..	78.2	45.3	123.5	1,568.1	7.9	42.4
ALL FEMALES								
1982 -								
August	2,341.5	22.4	141.7	58.8	200.5	2,542.0	7.9	44.3
September	2,331.2	20.4	155.4	61.9	217.3	2,548.5	8.5	44.4
October	2,338.3	24.4	178.7	64.8	243.5	2,581.8	9.4	44.9
November	2,321.4	28.5	187.6	59.8	247.4	2,568.8	9.6	44.6
December	2,324.7	32.8	194.2	63.8	258.0	2,582.7	10.0	44.7
1983 -								
January	2,326.8	31.3	198.6	56.2	254.8	2,581.6	9.9	44.6
February	2,319.1	35.4	206.0	61.9	267.9	2,587.0	10.4	44.6
March	2,327.8	35.7	212.3	62.5	274.8	2,602.6	10.6	44.8
April	2,305.7	33.0	199.0	69.8	268.8	2,574.4	10.4	44.3
May	2,324.0	35.1	212.7	68.4	281.2	2,605.2	10.8	44.7
June	2,328.4	35.3	210.0	61.5	271.4	2,599.8	10.4	44.6
July	2,338.6	33.6	202.5	70.7	273.2	2,611.7	10.5	44.7
August	2,331.2	35.5	204.1	66.6	270.6	2,601.8	10.4	44.5
September	2,345.8	41.4	215.7	74.9	290.7	2,636.5	11.0	45.0
PERSONS								
1982 -								
August	6,381.9	45.9	399.4	81.9	481.3	6,863.2	7.0	60.6
September	6,379.2	44.2	430.0	84.8	514.8	6,894.0	7.5	60.7
October	6,388.6	46.5	484.0	86.1	570.1	6,958.7	8.2	61.2
November	6,341.6	52.3	524.3	76.6	600.9	6,942.5	8.7	60.9
December	6,296.2	59.3	554.9	82.7	637.6	6,933.8	9.2	60.7
1983 -								
January	6,278.9	62.8	561.7	77.8	639.5	6,918.4	9.2	60.5
February	6,277.4	68.4	583.6	85.9	669.5	6,946.9	9.6	60.6
March	6,263.2	70.2	618.3	83.6	701.9	6,965.1	10.1	60.7
April	6,235.2	70.0	620.3	94.6	714.9	6,950.1	10.3	60.5
May	6,257.6	70.7	631.3	89.7	720.9	6,978.5	10.3	60.6
June	6,263.3	71.5	642.3	79.8	722.1	6,985.3	10.3	60.6
July	6,282.8	74.6	624.8	93.9	718.6	7,001.5	10.3	60.6
August	6,263.5	71.9	624.6	88.5	713.1	6,976.6	10.2	60.3
September	6,313.0	76.8	630.0	100.4	730.4	7,043.4	10.4	60.8

TABLE 3. LABOUR FORCE STATUS OF THE CIVILIAN POPULATION AGED 15 AND OVER:
MARITAL STATUS, SEPTEMBER 1983

	Employed		Unemployed			Labour force	Not in labour force	Civilian population aged 15 and over	Unemployment rate	Participation rate
	Full-time workers	Total	Looking for full-time work	Looking for part-time work	Total					
	- '000 -								- per cent -	
Males	3,748.0	3,979.6	410.7	24.7	435.3	4,415.0	1,310.7	5,725.7	9.9	77.1
Married	2,660.7	2,761.6	183.9	5.0	188.9	2,950.5	736.0	3,686.6	6.4	80.0
Not married	1,087.3	1,218.0	226.7	19.7	246.4	1,464.4	574.6	2,039.1	16.8	71.8
Females	1,534.7	2,370.3	207.0	76.4	283.4	2,653.7	3,206.5	5,860.2	10.7	45.3
Married	819.8	1,460.0	80.0	46.2	126.2	1,586.2	2,109.0	3,695.2	8.0	42.9
Not married	714.9	910.3	127.0	30.3	157.2	1,067.5	1,097.5	2,165.1	14.7	49.3
Persons	5,282.7	6,350.0	617.6	101.1	718.7	7,068.7	4,517.2	11,585.9	10.2	61.0

TABLE 4. LABOUR FORCE STATUS OF THE CIVILIAN POPULATION AGED 15 AND OVER:
STATES AND TERRITORIES, SEPTEMBER 1983

State or Territory	Employed		Unemployed			Labour force	Not in labour force	Civilian population aged 15 and over	Unemployment rate	Participation rate
	Full-time workers	Total	Looking for full-time work	Looking for part-time work	Total					
- '000 -										
- per cent -										
MALES										
New South Wales	1,286.4	1,367.8	159.1	7.4	166.5	1,534.4	472.0	2,006.4	10.9	76.5
Victoria	1,001.7	1,061.8	93.3	8.2	101.4	1,163.3	336.1	1,499.4	8.7	77.6
Queensland	595.2	633.1	62.6	3.9	66.5	699.6	215.6	915.2	9.5	76.4
South Australia	321.7	342.8	38.9	*	41.4	384.2	121.3	505.5	10.8	76.0
Western Australia	344.0	364.0	38.8	*	40.9	404.8	105.8	510.6	10.1	79.3
Tasmania	103.6	108.4	11.5	*	11.8	120.2	38.7	158.9	9.8	75.7
Northern Territory	36.7	38.5	3.3	*	3.4	41.9	7.0	49.0	8.2	85.6
Australian Capital Territory	58.6	63.2	3.2	*	3.4	66.6	14.1	80.7	5.2	82.5
Australia	3,748.0	3,979.6	410.7	24.7	435.3	4,415.0	1,310.7	5,725.7	9.9	77.1
FEMALES										
New South Wales	544.6	813.5	78.7	23.6	102.3	915.8	1,147.9	2,063.7	11.2	44.4
Victoria	421.4	642.0	55.3	24.3	79.5	721.6	826.6	1,548.2	11.0	46.6
Queensland	236.5	364.1	27.2	12.9	40.1	404.2	525.7	929.9	9.9	43.5
South Australia	118.9	204.4	18.1	5.8	23.9	228.3	290.7	519.0	10.5	44.0
Western Australia	126.5	216.4	16.8	6.8	23.6	240.0	265.1	505.1	9.8	47.5
Tasmania	37.6	61.2	5.8	1.5	7.3	68.5	97.3	165.8	10.7	41.3
Northern Territory	17.0	21.9	2.5	*	2.5	24.4	19.1	43.5	10.3	56.1
Australian Capital Territory	32.1	46.9	2.5	*	4.1	51.0	34.1	85.1	8.1	59.9
Australia	1,534.7	2,370.3	207.0	76.4	283.4	2,653.7	3,206.5	5,860.2	10.7	45.3
PERSONS										
New South Wales	1,831.0	2,181.3	237.8	31.1	268.9	2,450.2	1,619.9	4,070.1	11.0	60.2
Victoria	1,423.1	1,703.9	148.6	32.4	181.0	1,884.8	1,162.7	3,047.6	9.6	61.8
Queensland	831.8	997.2	89.7	16.8	106.6	1,103.8	741.3	1,845.1	9.7	59.8
South Australia	440.6	547.2	57.1	8.2	65.3	612.5	412.0	1,024.5	10.7	59.8
Western Australia	470.5	580.4	55.7	8.8	64.5	644.8	370.9	1,015.7	10.0	63.5
Tasmania	141.2	169.6	17.3	1.8	19.1	188.7	136.0	324.7	10.1	58.1
Northern Territory	53.7	60.4	5.8	*	6.0	66.3	26.1	92.5	9.0	71.7
Australian Capital Territory	90.7	110.0	5.7	*	7.5	117.6	48.2	165.8	6.4	70.9
Australia	5,282.7	6,350.0	617.6	101.1	718.7	7,068.7	4,517.2	11,585.9	10.2	61.0

TABLE 5. LABOUR FORCE STATUS OF THE CIVILIAN POPULATION AGED 15 AND OVER:
STATE CAPITAL CITIES, SEPTEMBER 1983

Capital city	Employed		Unemployed			Labour force	Not in labour force	Civilian population aged 15 and over	Unemployment rate	Participation rate
	Full-time workers	Total	Looking for full-time work	Looking for part-time work	Total					
	- '000 -									
MALES										
Sydney	820.5	872.6	93.4	5.6	99.0	971.6	288.4	1,260.0	10.2	77.1
Melbourne	715.4	758.3	67.2	6.7	73.9	832.2	235.8	1,068.1	8.9	77.9
Brisbane	265.0	282.1	27.9	*	29.5	311.7	99.4	411.1	9.5	75.8
Adelaide	226.1	240.9	27.2	*	29.2	270.1	92.1	362.2	10.8	74.6
Perth	226.0	241.3	31.3	*	33.0	274.3	81.7	356.0	12.0	77.0
Hobart	41.1	43.1	4.9	*	5.0	48.1	16.2	64.3	10.4	74.8
Total	2,294.1	2,438.3	252.0	17.7	269.7	2,708.0	813.7	3,521.8	10.0	76.9
FEMALES										
Sydney	390.8	562.0	47.8	17.7	65.5	627.5	703.2	1,330.7	10.4	47.2
Melbourne	326.4	477.4	41.3	18.7	59.9	537.3	580.2	1,117.4	11.2	48.1
Brisbane	122.5	182.2	12.7	7.5	20.2	202.4	238.5	440.9	10.0	45.9
Adelaide	92.4	152.2	14.4	4.9	19.3	171.5	212.9	384.5	11.2	44.6
Perth	97.9	160.9	13.5	5.5	19.0	179.9	196.8	376.7	10.6	47.8
Hobart	18.0	28.7	2.4	*	3.3	32.0	37.0	69.0	10.4	46.4
Total	1,048.0	1,563.3	132.1	55.2	187.2	1,750.6	1,968.7	3,719.2	10.7	47.1
PERSONS										
Sydney	1,211.3	1,434.5	141.2	23.3	164.5	1,599.1	991.7	2,590.8	10.3	61.7
Melbourne	1,041.8	1,235.7	108.5	25.4	133.8	1,369.5	816.0	2,185.5	9.8	62.7
Brisbane	387.4	464.3	40.6	9.1	49.7	514.0	338.0	852.0	9.7	60.3
Adelaide	318.5	393.2	41.6	6.9	48.5	441.7	305.1	746.7	11.0	59.1
Perth	324.0	402.2	44.8	7.2	52.0	454.2	278.5	732.7	11.5	62.0
Hobart	59.1	71.7	7.3	*	8.4	80.1	53.2	133.3	10.4	60.1
Total	3,342.1	4,001.6	384.1	72.9	457.0	4,458.6	2,782.4	7,241.0	10.2	61.6

TABLE 6. LABOUR FORCE STATUS OF THE CIVILIAN POPULATION AGED 15 AND OVER:
AUSTRALIAN CAPITAL TERRITORY, SEPTEMBER 1983

	Persons			Aged 15-19	Aged 20-24	Aged 25 and over	Total
	Males	Females	Total				
		Married					
- '000 -							
Employed	63.2	29.8	46.9	9.2	15.1	85.7	110.0
Full-time workers	58.6	18.6	32.1	4.7	13.9	72.2	90.7
Part-time workers	4.6	11.2	14.8	4.5	*	13.5	19.3
Unemployed	3.4	2.1	4.1	2.1	*	4.5	7.5
Looking for full-time work	3.2	*	2.5	*	*	3.0	5.7
Looking for part-time work	*	*	*	*	*	*	*
Labour force	66.6	32.0	51.0	11.3	16.1	90.2	117.6
Not in labour force	14.1	23.3	34.1	9.2	2.7	36.3	48.2
Aged 15-19 attending school(a)	4.7	*	3.0	7.7	7.7
Civilian population	80.7	55.3	85.1	20.5	18.8	126.5	165.8
- per cent -							
Unemployment rate	5.2	6.7	8.1	18.5	*	5.0	6.4
Looking for full-time work	5.1	*	7.3	*	*	3.9	5.9
Participation rate	82.5	57.8	59.9	55.2	85.6	71.3	70.9
Employment/population ratio	78.3	54.0	55.1	45.0	80.7	67.7	66.4
- number -							
Average (mean) weekly hours worked by employed persons	36.7	25.0	26.3	24.1	34.6	32.7	32.3
Average (mean) duration of unemployment (weeks)	64.5	17.3	20.7	28.6	33.2	47.6	40.6

(a) Excludes persons in institutions. See Explanatory notes.

TABLE 7. LABOUR FORCE STATUS OF THE CIVILIAN POPULATION AGED 15 TO 19:
SCHOOL ATTENDANCE(a), SEPTEMBER 1983

	Employed		Unemployed			Labour force	Not in labour force	Civilian population aged 15-19	Unemployment rate	Participation rate
	Full-time workers	Total	Looking for full-time work	Looking for part-time work	Total					
	- '000 -									- per cent -
NOT ATTENDING SCHOOL										
Males	226.0	248.5	70.9	*	73.8	322.4	34.5	356.9	22.9	90.3
Females	187.8	226.6	63.2	*	67.1	293.8	64.4	358.1	22.9	82.0
Persons	413.8	475.2	134.1	6.9	141.0	616.1	98.9	715.1	22.9	86.2
Left school -										
Before 1981	148.8	162.7	47.5	*	49.0	211.8	29.2	241.0	23.2	87.9
1981	135.3	152.2	36.3)	(38.6	190.8	27.4	218.2	20.2	87.4
1982 to survey date	129.7	160.3	50.3)	5.3 (53.3	213.6	42.3	255.9	25.0	83.5
Age -										
15	7.7	10.2	6.7	*	7.1	17.3	*	21.4	40.9	80.8
16	38.4	45.9	22.4	*	22.6	68.4	11.0	79.5	33.0	86.1
17	85.6	98.8	32.2	*	33.0	131.8	14.3	146.1	25.1	90.2
18	130.9	148.6	33.9)	(36.0	184.6	31.4	216.0	19.5	85.5
19	151.1	171.7	38.8)	5.6 (42.3	214.0	38.1	252.1	19.7	84.9
ATTENDING SCHOOL										
Males	*	50.6	8.8	11.0	19.9	70.5	217.8	288.3	28.2	24.4
Females	*	53.1	4.7	14.8	19.6	72.7	186.5	259.2	26.9	28.0
Persons	4.5	103.7	13.6	25.8	39.4	143.2	404.3	547.5	27.5	26.1
Age -										
15)	(34.9	*	14.3	17.9	52.9	183.7	236.5	33.9	22.4
16) 4.5	(38.2	6.8	6.8	13.6	51.8	120.4	172.2	26.2	30.1
17)	(23.7	*)	(6.0	29.8	71.8	101.6	20.3	29.3
18 and 19	*	6.8	*) 4.7	(*	8.7	28.5	37.2	*	23.4
TOTAL										
Males	229.1	299.1	79.8	13.9	93.7	392.8	252.3	645.2	23.9	60.9
Females	189.2	279.8	67.9	18.8	86.7	366.5	250.9	617.4	23.7	59.4
Persons	418.3	578.9	147.7	32.7	180.4	759.3	503.3	1,262.5	23.8	60.1
Age -										
15	9.6	45.2	10.3	14.7	25.0	70.2	187.8	257.9	35.6	27.2
16	40.3	84.1	29.2	7.0	36.2	120.3	131.4	251.7	30.1	47.8
17	86.3	122.5	34.4	4.7	39.1	161.6	86.1	247.7	24.2	65.2
18	130.9	155.0	34.7)	(37.2	192.2	54.8	247.0	19.4	77.8
19	151.1	172.2	39.0) 6.4	(42.9	215.1	43.1	258.2	20.0	83.3

(a) Excludes persons in institutions. See Explanatory notes.

TABLE 8. LABOUR FORCE STATUS OF THE CIVILIAN POPULATION AGED 20 TO 24, SEPTEMBER 1983

	Employed		Unemployed			Labour force	Not in labour force	Civilian population aged 20-24	Unemployment rate	Participation rate
	Full-time workers	Total	Looking for full-time work	Looking for part-time work	Total					
	- '000 -									- per cent -
Males	480.4	509.6	98.7	*	102.4	612.1	61.6	673.6	16.7	90.9
Females	351.2	419.8	45.4	9.2	54.6	474.4	180.1	654.6	11.5	72.5
Persons	831.6	929.4	144.1	13.0	157.0	1,086.5	241.7	1,328.2	14.5	81.8
Age -										
20	154.4	177.9	35.6) 5.5	39.4	217.4	47.7	265.0	18.1	82.0
21	172.8	191.8	32.4)	34.1	225.8	42.8	268.6	15.1	84.1
22	168.6	189.0	29.9	*	30.5	219.5	49.5	269.0	13.9	81.6
23	165.8	182.1	26.8	4.6	31.3	213.4	50.3	263.7	14.7	80.9
24	170.0	188.6	19.4	*	21.8	210.3	51.4	261.8	10.3	80.4

TABLE 9. CIVILIAN LABOUR FORCE BY BIRTHPLACE, SEPTEMBER 1983

	Employed		Unemployed		Labour force	Unemployment rate	Participation rate(a)
	Full-time workers	Total	Looking for full-time work	Total			
				- '000 -			
MALES							
Born in Australia	2,721.3	2,900.6	275.8	292.7	3,193.3	9.2	77.8
Born outside Australia	1,026.7	1,079.1	134.9	142.6	1,221.7	11.7	79.0
Africa	38.7	40.9	*	*	45.0	*	85.1
America	31.1	33.6	7.0	7.8	41.4	18.8	84.4
Asia	112.8	121.3	27.8	29.2	150.5	19.4	76.5
Lebanon	14.4	15.9	6.0	6.4	22.4	28.7	75.2
Europe	785.2	819.6	86.6	91.3	910.8	10.0	78.5
Germany	40.6	41.6	5.3	5.5	47.2	11.8	87.3
Greece	57.0	59.2	6.6	7.2	66.4	10.8	83.4
Italy	110.8	114.9	9.9	9.9	124.9	8.0	81.1
Malta	21.9	22.1	*	*	25.6	*	87.4
Netherlands	39.9	41.2	*	*	44.7	*	80.3
Poland	19.6	20.4	*	*	24.5	*	68.2
UK and Ireland	368.1	387.8	36.4	38.3	426.2	9.0	76.8
Yugoslavia	57.1	58.7	7.6	7.9	66.6	11.9	81.0
Oceania	58.9	63.7	9.8	10.4	74.0	14.0	84.7
New Zealand	50.7	54.3	6.9	7.3	61.6	11.9	86.7
MARRIED FEMALES							
Born in Australia	550.0	1,029.2	41.6	70.7	1,100.0	6.4	41.7
Born outside Australia	269.9	430.8	38.4	55.4	486.2	11.4	46.6
Africa	9.5	14.9	*	*	15.7	*	48.6
America	9.2	11.3	*	*	14.5	*	53.2
Asia	36.8	53.6	8.8	11.2	64.8	17.3	46.6
Lebanon	*	4.6	*	*	5.4	*	25.7
Europe	194.8	321.9	24.6	37.1	359.0	10.3	45.4
Germany	9.2	17.7	*	*	19.6	*	49.1
Greece	19.5	26.7	*	5.1	31.8	16.2	51.1
Italy	26.0	41.6	*	*	44.9	*	40.8
Malta	*	6.7	*	*	7.2	*	37.2
Netherlands	5.2	11.8	*	*	13.4	*	38.6
Poland	*	5.2	*	*	6.5	*	31.6
UK and Ireland	87.9	157.4	9.6	15.5	172.9	9.0	45.3
Yugoslavia	20.3	26.4	*	*	30.8	*	55.0
Oceania	19.5	29.1	*	*	32.2	*	58.6
New Zealand	17.4	25.7	*	*	27.5	*	61.3
ALL FEMALES							
Born in Australia	1,142.6	1,786.4	142.8	195.3	1,981.6	9.9	46.1
Born outside Australia	392.1	584.0	64.1	88.1	672.1	13.1	46.6
Africa	15.2	20.8	*	*	22.0	*	49.1
America	14.0	18.2	*	5.3	23.5	22.5	58.0
Asia	56.5	77.6	14.5	17.9	95.5	18.7	46.9
Lebanon	4.6	6.5	*	*	8.7	*	31.4
Europe	270.9	418.2	39.7	57.0	475.2	12.0	44.8
Germany	12.7	22.4	*	*	25.1	*	47.4
Greece	22.2	29.8	4.9	6.4	36.1	17.6	48.7
Italy	33.5	50.0	*	5.0	55.0	9.0	40.6
Malta	*	7.1	*	*	7.7	*	34.3
Netherlands	7.3	14.8	*	*	16.6	*	38.6
Poland	*	6.6	*	*	8.2	*	32.3
UK and Ireland	139.0	221.6	18.9	27.7	249.3	11.1	45.9
Yugoslavia	24.0	30.7	*	5.3	36.0	14.8	50.8
Oceania	35.5	49.2	4.9	6.7	55.9	12.0	60.8
New Zealand	31.6	43.3	*	*	47.7	*	63.6
PERSONS							
Born in Australia	3,863.9	4,686.9	418.6	488.0	5,174.9	9.4	61.6
Born outside Australia	1,418.8	1,663.1	199.0	230.8	1,893.8	12.2	63.4
Africa	54.0	61.7	4.7	5.3	67.0	7.9	68.6
America	45.0	51.8	10.9	13.1	64.9	20.2	72.5
Asia	169.3	198.9	42.3	47.1	246.0	19.1	61.5
Lebanon	19.1	22.4	7.6	8.6	31.1	27.8	54.0
Europe	1,056.0	1,237.7	126.3	148.3	1,386.0	10.7	62.4
Germany	53.3	64.0	7.4	8.2	72.2	11.4	67.6
Greece	79.3	88.9	11.5	13.5	102.5	13.2	66.7
Italy	144.3	165.0	13.2	14.9	179.9	8.3	62.1
Malta	26.2	29.2	*	*	33.2	*	64.4
Netherlands	47.2	56.1	*	5.2	61.2	8.4	62.1
Poland	23.8	27.1	5.0	5.7	32.8	17.4	53.3
UK and Ireland	507.1	609.4	55.3	66.0	675.4	9.8	61.5
Yugoslavia	81.1	89.4	11.6	13.3	102.6	12.9	67.0
Oceania	94.5	112.9	14.7	17.0	129.9	13.1	72.4
New Zealand	82.4	97.6	10.2	11.7	109.3	10.7	74.8

(a) See the definition of the labour force participation rate in the Explanatory notes.

TABLE 10. CIVILIAN LABOUR FORCE BORN OUTSIDE AUSTRALIA: BIRTHPLACE AND PERIOD OF ARRIVAL IN AUSTRALIA, SEPTEMBER 1983

Period of arrival	Africa	America	Asia	Europe		Oceania		Total				Persons
				Ireland	U.K. and other count- ries	New Zealand	Total	Males	Females			
									Married	Total		
EMPLOYED ('000)												
Before 1971	34.7	17.9	85.4	419.5	540.2	26.3	34.1	751.0	291.7	380.9	1,131.9	
1971 - 1975	9.8	16.3	40.8	98.9	50.1	14.7	17.7	142.3	64.3	91.4	233.7	
1976 - 1981	13.4	14.3	60.0	69.6	29.9	44.4	48.6	145.1	61.1	90.8	235.9	
1982 to survey date	*	*	12.6	21.3	8.1	12.2	12.4	40.7	13.7	20.8	61.5	
UNEMPLOYED ('000)												
Before 1971)	(*	11.7	44.5	59.1	*) 5.0	(82.0	25.8	42.7	124.6
1971 - 1975)	(4.9	7.0	9.5	9.5	*)	(20.1	8.8	14.2	34.4
1976 - 1981)	5.3	(20.5	7.3	9.0	7.2	9.5	27.9	13.0	21.2	49.1
1982 to survey date)	(*	7.8	4.7	4.7	*	*	12.6	7.7	10.0	22.6
LABOUR FORCE ('000)												
Before 1971	37.4	21.9	97.1	464.0	599.3	28.2	36.8	833.0	317.5	423.6	1,256.6	
1971 - 1975	10.9	21.2	47.8	108.5	59.6	15.7	20.1	162.4	73.1	105.7	268.1	
1976 - 1981	13.9	16.6	80.6	76.9	38.9	51.6	58.2	173.0	74.2	112.0	285.0	
1982 to survey date	4.7	5.2	20.4	26.1	12.8	13.8	14.9	53.3	21.4	30.8	84.2	
UNEMPLOYMENT RATE (per cent)												
Before 1971)	(*	12.1	9.6	9.9	*) 8.9	(9.8	8.1	10.1	9.9
1971 - 1975)	(23.3	14.6	8.8	15.9	*)	(12.4	12.1	13.5	12.8
1976 - 1981)	7.9	(25.5	9.5	23.0	14.0	16.4	16.1	17.6	18.9	17.2
1982 to survey date)	(*	38.2	18.2	36.7	*	*	23.7	36.1	32.4	26.9
PARTICIPATION RATE(a) (per cent)												
Before 1971	65.1	70.2	63.0	57.6	62.9	63.2	65.0	77.0	44.0	43.4	61.1	
1971 - 1975	69.3	74.9	65.8	73.8	66.0	74.3	70.5	85.8	54.1	54.8	70.1	
1976 - 1981	77.1	76.0	60.7	71.5	65.1	81.1	77.8	83.4	53.7	54.0	68.7	
1982 to survey date	74.6	63.9	50.4	67.0	61.8	82.4	76.4	78.9	44.4	46.3	62.2	

(a) See the definition of the labour force participation rate in the Explanatory notes.

TABLE 11. CIVILIAN LABOUR FORCE, BY AGE, SEPTEMBER 1983

Age group	Number ('000)					Participation rate (per cent)				
	Males				Persons	Females				Persons
	Males	Married	Not married	Total		Males	Married	Not married	Total	
15-64	4,353.1	1,575.7	1,058.4	2,634.1	6,987.2	85.6	47.2	64.8	53.0	69.5
15-19	392.8	12.9	353.6	366.5	759.3	60.6	45.7	59.8	59.2	59.9
20-24	612.1	155.7	318.7	474.4	1,086.5	90.9	55.9	84.7	72.5	81.8
25-34	1,177.6	483.6	188.1	671.7	1,849.3	96.0	48.6	79.0	54.5	75.2
35-44	998.2	505.5	84.4	589.9	1,588.1	95.3	57.8	65.9	58.9	77.5
45-54	723.7	310.6	69.7	380.3	1,103.9	92.0	49.5	57.3	50.8	71.9
55-59	304.9	81.8	29.0	110.8	415.8	80.2	27.8	36.4	29.7	55.1
60-64	143.8	25.8	14.7	40.5	184.3	44.6	10.6	14.9	11.8	27.7
65 and over	61.9	10.5	9.2	19.6	81.5	9.7	2.9	1.7	2.2	5.3
Total	4,415.0	1,586.2	1,067.5	2,653.7	7,068.7	77.1	42.9	49.3	45.3	61.0

TABLE 12. LABOUR FORCE PARTICIPATION RATES(a), BY AGE AND BIRTHPLACE, SEPTEMBER 1983
(per cent)

Age group	Born in Australia			Born outside Australia		
	Males	Females	Persons	Males	Females	Persons
15-64	85.9	53.4	69.6	87.2	52.7	70.8
15-19	62.4	60.9	61.7	58.6	56.4	57.5
20-24	92.5	74.1	83.4	86.7	66.3	76.5
25-34	96.8	53.4	75.2	95.4	58.0	76.2
35-44	95.6	57.9	76.7	95.8	61.2	79.8
45-54	92.7	50.6	71.3	91.8	51.7	73.7
55-59	80.9	29.2	54.0	80.8	31.1	58.8
60-64	41.2	11.8	25.6	54.3	12.2	34.1
65 and over	11.3	2.6	6.3	7.3	2.1	4.6
Total	77.8	46.1	61.6	79.0	46.6	63.4

(a) See the definition of the labour force participation rate in the Explanatory notes.

TABLE 13. EMPLOYED PERSONS: FULL-TIME AND PART-TIME WORKERS, BY AGE, SEPTEMBER 1983
('000)

	Age group								
	15-19	20-24	25-34	35-44	45-54	55-59	60-64	65 and over	Total
MALES									
Full-time workers	229.1	480.4	1,039.5	913.7	657.7	269.4	118.4	39.7	3,748.0
Part-time workers	70.0	29.2	36.6	26.6	20.6	14.3	13.0	21.2	231.6
Total	299.1	509.6	1,076.2	940.3	678.4	283.8	131.4	60.9	3,979.6
MARRIED FEMALES									
Full-time workers	8.3	109.7	239.2	243.7	161.7	41.8	11.7	*	819.8
Part-time workers	*	30.9	193.5	226.3	133.0	35.1	13.3	6.7	640.2
Total	9.6	140.6	432.7	470.0	294.8	76.9	25.0	10.5	1,460.0
ALL FEMALES									
Full-time workers	189.2	351.2	386.8	305.2	212.0	61.2	21.5	7.6	1,534.7
Part-time workers	90.5	68.6	215.2	241.0	146.6	43.7	18.0	11.9	835.7
Total	279.8	419.8	602.0	546.3	358.5	104.9	39.5	19.5	2,370.3
PERSONS									
Full-time workers	418.3	831.6	1,426.3	1,219.0	869.7	330.6	139.9	47.3	5,282.7
Part-time workers	160.6	97.8	251.9	267.6	167.2	58.0	31.0	33.1	1,067.3
Total	578.9	929.4	1,678.2	1,486.6	1,036.9	388.7	170.9	80.4	6,350.0

TABLE 14. HOURS WORKED BY EMPLOYED PERSONS, SEPTEMBER 1983

	Males	Females		Total	Persons
		Married	Not married		
NUMBER EMPLOYED ('000)					
Weekly hours worked -					
0	319.5	163.3	62.1	225.4	544.9
1-15	144.3	284.1	115.9	400.1	544.4
16-29	191.2	261.2	70.3	331.6	522.8
30-34	251.8	103.9	62.0	165.8	417.7
35-39	675.5	207.5	190.8	398.2	1,073.7
40	1,122.7	272.7	287.7	560.4	1,683.1
41-44	231.7	47.5	42.0	89.4	321.1
45-48	324.3	36.6	37.2	73.8	398.1
49 and over	718.6	83.4	42.3	125.6	844.2
Total	3,979.6	1,460.0	910.3	2,370.3	6,350.0
WEEKLY HOURS WORKED					
Aggregate weekly hours worked (million)	151.9	38.9	28.9	67.8	219.7
By full-time workers	148.4	29.8	26.3	56.2	204.6
By part-time workers	3.4	9.1	2.6	11.7	15.1
Average weekly hours worked	38.2	26.6	31.8	28.6	34.6
By full-time workers	39.6	36.4	36.8	36.6	38.7
By part-time workers	14.8	14.2	13.3	13.9	14.1
Average weekly hours worked by persons who worked one hour or more in the survey week	41.5	30.0	34.1	31.6	37.8
By full-time workers	43.0	40.7	39.4	40.1	42.2
By part-time workers	16.3	16.1	14.4	15.7	15.8

TABLE 15. EMPLOYED PERSONS: EMPLOYMENT/POPULATION RATIOS BY AGE AND MARITAL STATUS, SEPTEMBER 1983 (per cent)

Age group	Males			Females			Persons
	Married	Not married	Total	Married	Not married	Total	
15-64	84.4	64.4	77.0	43.4	55.2	47.3	62.3
15-19	*	46.1	46.1	34.2	45.7	45.2	45.6
20-24	84.8	73.0	75.7	50.5	74.2	64.1	70.0
25-34	90.9	80.2	87.7	43.5	71.1	48.8	68.2
35-44	91.6	78.2	89.8	53.8	59.6	54.5	72.5
45-54	88.0	73.6	86.3	47.0	52.4	47.9	67.5
55-59	76.6	63.0	74.6	26.2	35.1	28.1	51.6
60-64	41.0	39.6	40.7	10.3	14.7	11.6	25.7
65 and over	10.8	5.9	9.5	2.9	1.7	2.2	5.3
Total	74.9	59.7	69.5	39.5	42.0	40.4	54.8

TABLE 16. FULL-TIME WORKERS WHO WORKED LESS THAN 35 HOURS, BY REASON, SEPTEMBER 1983 ('000)

Reason for working less than 35 hours	Males	Females		Total	Persons
		Married	Not married		
Leave, holiday or flextime	383.8	108.5	70.5	178.9	562.7
Own illness or injury	133.0	38.7	29.4	68.1	201.1
Bad weather, plant breakdown, etc.	36.5	*	*	*	39.0
Began or left job in the survey week	7.2	*	*	5.8	13.1
Stood down, on short time, insufficient work	41.0	9.1	*	12.0	53.0
Shift work, standard work arrangements	57.9	9.3	7.3	16.7	74.5
Other reasons	15.8	*	*	*	19.1
Total	675.2	172.2	115.0	287.2	962.4

TABLE 17. PART-TIME WORKERS: WHETHER PREFERRED TO WORK MORE HOURS, BY AGE, SEPTEMBER 1983 ('000)

	Age group						
	15-19	20-24	25-34	35-44	45-54	55 and over	Total
MALES							
Total	70.0	29.2	36.6	26.6	20.6	48.5	231.6
Preferred not to work more hours	47.7	17.1	21.4	17.0	12.1	42.1	157.4
Preferred to work more hours	22.3	12.1	15.2	9.6	8.6	6.4	74.2
Had actively looked for full-time work in the four weeks to the end of the survey week	10.3	7.2	8.5	*	4.6	*	36.4
MARRIED FEMALES							
Total	*	30.9	193.5	226.3	133.0	55.1	640.2
Preferred not to work more hours	*	24.3	169.0	193.1	120.1	51.4	558.8
Preferred to work more hours	*	6.6	24.5	33.2	12.9	*	81.5
Had actively looked for full-time work in the four weeks to the end of the survey week	*	*	6.8	4.8	*	*	16.8
ALL FEMALES							
Total	90.5	68.6	215.2	241.0	146.6	73.6	835.7
Preferred not to work more hours	63.2	47.3	183.6	203.4	130.1	67.9	695.5
Preferred to work more hours	27.4	21.3	31.6	37.6	16.5	5.8	140.2
Had actively looked for full-time work in the four weeks to the end of the survey week	13.9	10.5	10.1	6.1	*	*	43.2
PERSONS							
Total	160.6	97.8	251.9	267.6	167.2	122.2	1,067.3
Preferred not to work more hours	110.8	64.4	205.1	220.4	142.2	110.0	852.9
Preferred to work more hours	49.7	33.4	46.8	47.2	25.1	12.2	214.4
Had actively looked for full-time work in the four weeks to the end of the survey week	24.2	17.7	18.5	10.1	6.3	*	79.6

TABLE 18. PART-TIME WORKERS: WHETHER PREFERRED TO WORK MORE HOURS, BY HOURS WORKED, SEPTEMBER 1983 ('000)

	Hours worked by persons who worked in the survey week						Persons who did not work in the survey week	Total
	1-5	6-10	11-15	16-20	21-29	30-34		
MALES								
Total	35.1	51.3	20.4	32.6	29.4	42.0	20.9	231.6
Preferred not to work more hours	24.0	35.9	11.5	21.1	19.2	30.2	15.6	157.4
Preferred to work more hours	11.1	15.3	8.9	11.6	10.2	11.8	5.3	74.2
Had actively looked for full-time work in the four weeks to the end of the survey week	4.6	8.5	5.7	6.9	4.5	*	*	36.4
MARRIED FEMALES								
Total	75.5	114.6	84.8	120.4	109.8	58.8	76.5	640.2
Preferred not to work more hours	60.8	94.8	74.0	109.1	97.4	54.5	68.2	558.8
Preferred to work more hours	14.7	19.8	10.8	11.3	12.4	*	8.3	81.5
Had actively looked for full-time work in the four weeks to the end of the survey week	----	8.1	----	4.8	----	*	*	16.8
ALL FEMALES								
Total	112.0	166.1	106.2	142.4	136.3	81.2	91.5	835.7
Preferred not to work more hours	87.2	136.0	87.5	120.9	113.6	69.7	80.5	695.5
Preferred to work more hours	24.8	30.1	18.7	21.5	22.7	11.5	11.0	140.2
Had actively looked for full-time work in the four weeks to the end of the survey week	8.8	9.6	6.0	8.3	6.0	*	*	43.2
PERSONS								
Total	147.1	217.3	126.6	175.0	165.7	123.2	112.4	1,067.3
Preferred not to work more hours	111.2	171.9	99.0	142.0	132.8	99.9	96.1	852.9
Preferred to work more hours	35.9	45.4	27.6	33.0	32.9	23.3	16.3	214.4
Had actively looked for full-time work in the four weeks to the end of the survey week	13.4	18.1	11.8	15.2	10.6	6.6	*	79.6

TABLE 19. UNEMPLOYED PERSONS: STATES, BY AGE, SEPTEMBER 1983
('000)

Age group	New South Wales	Victoria	Queensland	South Australia	Western Australia	Tasmania	Australia(a)
MALES							
15-19	32.3	23.4	13.1	9.3	10.2	3.4	93.7
20-24	39.9	24.9	15.0	9.3	9.0	3.3	102.4
25-34	43.0	19.4	17.2	8.4	9.8	2.0	101.4
35 and over	51.4	33.7	21.2	14.4	11.8	3.1	137.8
Total	166.5	101.4	66.5	41.4	40.9	11.8	435.3
FEMALES							
15-19	29.0	24.9	11.9	7.9	7.8	2.8	86.7
20-24	20.4	13.8	8.1	5.2	4.6	1.5	54.6
25-34	26.3	20.1	9.5	5.1	5.3	1.6	69.7
35 and over	26.6	20.8	10.4	5.7	5.9	*	72.4
Total	102.3	79.5	40.1	23.9	23.6	7.3	283.4
PERSONS							
Looking for full-time work -							
15-19	52.8	35.5	19.7	14.8	14.9	6.0	147.7
20-24	55.8	34.8	20.9	13.2	12.7	4.6	144.1
25-34	62.5	33.1	23.1	11.2	13.2	3.0	148.5
35-44	32.9	22.0	11.8	8.0	7.1	1.6	85.1
45-54	20.6	14.9	8.9	5.1	5.0	1.9	57.7
55 and over	13.2	8.1	5.4	4.8	2.6	*	34.6
Total looking for full-time work	237.8	148.6	89.7	57.1	55.7	17.3	617.6
Total -							
15-19	61.3	48.3	25.1	17.1	18.0	6.3	180.4
20-24	60.3	38.7	23.1	14.5	13.6	4.8	157.0
25-34	69.3	39.5	26.8	13.5	15.1	3.6	171.1
35-44	37.9	26.8	15.2	9.0	8.4	2.1	101.6
45-54	24.1	17.6	9.9	6.0	6.2	2.0	67.0
55 and over	16.1	10.1	6.5	5.0	3.1	*	41.6
Total	268.9	181.0	106.6	65.3	64.5	19.1	718.7

(a) Includes the Northern Territory and the Australian Capital Territory

TABLE 20. UNEMPLOYED PERSONS, BY AGE AND WHETHER LOOKING FOR FULL-TIME OR PART-TIME WORK, SEPTEMBER 1983

	Number unemployed ('000)					Unemployment rate (per cent)				
	Males		Females		Persons	Males		Females		Persons
	Married	Total	Married	Total		Married	Total	Married	Total	
LOOKING FOR FULL-TIME WORK										
Total	183.9	410.7	80.0	207.0	617.6	6.5	9.9	8.9	11.9	10.5
Aged 15-19	*	79.8	*	67.9	147.7	*	25.8	*	26.4	26.1
Looking for first job	*	30.8	*	33.2	64.0
Attending school	*	8.8	*	4.7	13.6	n.a.	n.a.	n.a.	n.a.	n.a.
Aged 20 and over	182.2	330.9	77.6	139.1	470.0	6.4	8.6	8.7	9.4	8.8
20-24	17.4	98.7	10.6	45.4	144.1	12.4	17.0	8.8	11.4	14.8
Looking for first job	*	4.7	*	6.1	10.7
25-34	57.5	99.4	32.7	49.1	148.5	7.0	8.7	12.0	11.3	9.4
35-44	44.7	56.7	22.1	28.3	85.1	5.2	5.8	8.3	8.5	6.5
45-54	35.8	43.9	10.1	13.7	57.7	5.7	6.3	5.9	6.1	6.2
55 and over	26.8	32.1	*	*	34.6	6.7	7.0	*	*	6.3
Aged 15-64	183.2	409.8	80.0	207.0	616.7	6.5	10.0	8.9	11.9	10.5
LOOKING FOR PART-TIME WORK										
Total	5.0	24.7	46.2	76.4	101.1	4.7	9.6	6.7	8.4	8.7
Aged 15-19	*	13.9	*	18.8	32.7	*	16.6	*	17.2	16.9
Attending school	*	11.0	*	14.8	25.8	*	18.8	*	22.3	20.7
Aged 20 and over	5.0	10.7	45.4	57.6	68.4	4.7	6.2	6.6	7.2	7.0
20-24) ()	5.8 ()	4.5 ()	9.2 ()	13.0 ()) ()	8.8 ()	12.7 ()	11.8 ()	11.7 ()
25-34) ()	5.0 ()	18.3 ()	20.6 ()	22.6 ()) ()	5.2 ()	8.6 ()	8.7 ()	8.2 ()
35-44) ()	5.0 ()	13.4 ()	15.4 ()	16.5 ()) ()	5.2 ()	5.6 ()	6.0 ()	5.8 ()
45 and over) ()	5.0 ()	9.2 ()	12.5 ()	16.3 ()) ()	5.2 ()	4.7 ()	5.4 ()	5.3 ()
Aged 15-64	4.8	24.5	46.2	76.3	100.8	5.4	10.4	6.8	8.5	8.9
TOTAL										
Total	188.9	435.3	126.2	283.4	718.7	6.4	9.9	8.0	10.7	10.2
Aged 15-19	*	93.7	*	86.7	180.4	*	23.9	*	23.7	23.8
Attending school	*	19.9	*	19.6	39.4	*	28.2	*	26.9	27.5
Aged 20 and over(a)	187.2	341.6	122.9	196.7	538.3	6.4	8.5	7.8	8.6	8.5
20-24	17.6	102.4	15.1	54.6	157.0	12.1	16.7	9.7	11.5	14.5
25-34	58.2	101.4	50.9	69.7	171.1	6.9	8.6	10.5	10.4	9.3
35-44	45.7	57.9	35.5	43.7	101.6	5.2	5.8	7.0	7.4	6.4
45-54	36.6	45.3	15.8	21.7	67.0	5.7	6.3	5.1	5.7	6.1
55-59	17.9	21.2	4.9	5.9	27.1	6.7	6.9	5.9	5.3	6.5
60-64	10.3	12.4	*	*	13.4	8.4	8.6	*	*	7.3
Aged 15-64	188.0	434.3	126.2	283.3	717.6	6.5	10.0	8.0	10.8	10.3

(a) Includes unemployed persons aged 65 and over, details for whom are not shown separately.

TABLE 21. UNEMPLOYED PERSONS: BIRTHPLACE BY AGE, SEPTEMBER 1983

	Number unemployed ('000)			Unemployment rate (per cent)		
	Males	Females	Persons	Males	Females	Persons
BORN IN AUSTRALIA						
Total	292.7	195.3	488.0	9.2	9.9	9.4
Looking for full-time work	275.8	142.8	418.6	9.2	11.1	9.8
Looking for part-time work	16.9	52.4	69.3	8.6	7.5	7.8
Aged 15-19	77.4	73.7	151.1	22.8	23.5	23.2
Aged 20 and over	215.3	121.6	336.8	7.5	7.3	7.4
20-24	81.1	40.0	121.1	15.9	10.1	13.4
25-34	68.0	41.9	109.8	7.6	8.5	7.9
35-44	29.0	23.9	52.9	4.4	6.0	5.0
45-54	21.4	12.5	33.9	4.6	4.8	4.7
55 and over	15.8	*	19.2	4.7	*	4.2
Aged 15-64	292.1	195.3	487.4	9.3	9.9	9.5
BORN OUTSIDE AUSTRALIA						
Total	142.6	88.1	230.8	11.7	13.1	12.2
Looking for full-time work	134.9	64.1	199.0	11.6	14.1	12.3
Looking for part-time work	7.7	24.0	31.8	12.9	11.1	11.5
Aged 15-19	16.3	13.0	29.3	30.2	24.6	27.4
Aged 20 and over	126.4	75.1	201.5	10.8	12.1	11.3
20-24	21.3	14.6	36.0	20.6	18.4	19.7
25-34	33.5	27.8	61.3	11.8	15.4	13.2
35-44	28.9	19.8	48.7	8.4	10.4	9.1
45-54	23.9	9.3	33.1	9.1	7.7	8.6
55 and over	18.8	*	22.4	10.9	*	10.2
Aged 15-64	142.1	88.0	230.2	11.7	13.2	12.3

TABLE 22. UNEMPLOYED PERSONS, BY DURATION OF UNEMPLOYMENT AND AGE, ETC., SEPTEMBER 1983

Duration of unemployment (weeks)	Age group				Total(a)	Married	Not married	Looking for -	
	15-19	20-24	25-34	35-54				Full-time work	Part-time work
MALES									
- '000 -									
Under 2	*	*	*	5.1	18.9	10.5	8.3	15.7) 6.2
2 and under 4	6.3	6.2	5.6	5.9	25.6	12.4	13.2	22.6)
4 and under 8	11.3	8.2	9.1	8.3	39.3	15.7	23.6	35.9) 5.5
8 and under 13	9.8	10.5	9.8	6.1	38.8	14.7	24.1	36.6)
13 and under 26	14.1	15.1	13.7	13.9	60.3	24.3	36.0	57.6	*
26 and under 39	18.8	17.5	18.3	12.9	71.2	27.1	44.1	66.6	4.6
39 and under 52	10.4	8.5	8.8	10.0	40.8	17.8	23.0	39.9)
52 and under 65	9.1	13.2	13.3	12.9	52.9	23.9	29.0	51.0) 5.6
65 and under 104	*	8.4	6.9	7.8	30.1	14.7	15.4	29.2)
104 and over	6.4	10.7	11.6	20.2	57.4	27.7	29.6	55.5)
Total	93.7	102.4	101.4	103.1	435.3	188.9	246.4	410.7	24.7
- weeks -									
Average duration - Mean	33.4	41.6	42.8	56.5	45.9	50.1	42.7	47.0	28.4
Median	26.0	28.1	30.1	37.1	30.1	32.1	30.1	32.1	13.0
FEMALES									
- '000 -									
Under 2	5.1) 7.2	(7.8	6.2	23.5	14.8	8.7	12.3	11.3
2 and under 4	8.6)	(7.6	7.3	28.6	13.7	14.9	13.8	14.7
4 and under 8	8.8) 6.0	(6.5	5.9	27.8	13.3	14.5	17.2	10.6
8 and under 13	9.0) 5.7	(7.7	5.9	28.5	12.9	15.6	20.5	8.0
13 and under 26	13.9) 8.9	(11.5	5.8	40.5	16.3	24.3	31.3	9.3
26 and under 39	13.2) 7.7	(10.2	11.0	43.5	21.2	22.3	33.4	10.1
39 and under 52	9.4) *	(*	*	20.8	6.5	14.3	17.7) 6.4
52 and under 65	7.0) 7.2	(5.3	6.4	22.5	10.4	12.1	19.1) *
65 and under 104	4.8)	(*	*	13.5	*	9.9	12.8	*
104 and over	6.8) 8.0	(7.3	11.2	34.3	13.6	20.6	28.9	5.3
Total	86.7	54.6	69.7	65.4	283.4	126.2	157.2	207.0	76.4
- weeks -									
Average duration - Mean	33.5	42.7	33.5	45.7	38.2	33.2	42.2	43.8	23.1
Median	22.0	24.0	17.1	26.1	22.1	17.0	26.0	26.1	8.0
PERSONS									
- '000 -									
Under 2	8.6	7.2	12.1	11.3	42.4	25.3	17.1	28.0	14.5
2 and under 4	14.9	10.4	13.2	13.2	54.2	26.1	28.1	36.4	17.8
4 and under 8	20.2	14.3	15.6	14.2	67.1	29.0	38.1	53.1	14.0
8 and under 13	18.9	16.2	17.6	12.0	67.3	27.7	39.7	57.2	10.1
13 and under 26	28.0	24.0	25.2	19.7	100.9	40.6	60.3	88.9	12.0
26 and under 39	32.0	25.2	28.5	23.9	114.7	48.3	66.5	100.0	14.7
39 and under 52	19.8	12.3	12.6	13.2	61.5	24.2	37.3	57.5	*
52 and under 65	16.1	16.3	18.6	19.2	75.4	34.3	41.1	70.1	5.2
65 and under 104	8.9	12.5	8.8	10.4	43.6	18.3	25.3	42.0	*
104 and over	13.2	18.7	18.9	31.4	91.6	41.4	50.3	84.4	7.2
Total	180.4	157.0	171.1	168.6	718.7	315.1	403.7	617.6	101.1
- weeks -									
Average duration - Mean	33.4	42.0	39.0	52.3	42.9	43.3	42.5	45.9	24.4
Median	24.1	26.1	26.0	31.0	26.1	26.1	28.0	30.1	8.0

(a) Includes persons aged 55 and over, details for whom are not shown separately.

TABLE 23. UNEMPLOYED PERSONS: INDUSTRY AND OCCUPATION OF LAST FULL-TIME JOB
AND DURATION OF UNEMPLOYMENT, SEPTEMBER 1983
('000)

	Duration of unemployment (weeks)							Total		
	Under 4	4 and under 8	8 and under 13	13 and under 26	26 and under 39	39 and under 65	65 and over	Males	Females	Persons
Had worked full time for two weeks or more in the last two years	53.6	44.7	46.4	73.7	79.1	95.5	31.6	306.1	118.6	424.7
Industry division or subdivision -										
Agriculture and services to agriculture	4.9		6.6		7.7		*	15.4	*	19.7
Manufacturing	12.9	8.9	9.5	20.1	24.9	34.6	9.7	94.7	25.9	120.6
Food, beverages and tobacco		5.7		*	5.7	4.9	*	16.9	5.9	22.7
Metal products	5.2		4.6		*	8.0	*	21.1	*	22.3
Other manufacturing	7.7	5.3	6.2	12.6	15.7	21.7	6.3	56.7	18.8	75.5
Construction	7.2	6.0	8.3	9.3	10.5	15.0	*	58.0	*	60.2
Wholesale and retail trade	11.0	11.1	10.6	17.9	17.9	18.5	7.6	58.8	35.9	94.7
Transport and storage		4.8			5.3		4.9	13.8	*	15.0
Finance, property and business services	6.1			6.3		4.9	*	9.3	8.7	18.0
Community services	5.4		8.2	4.9	4.5		5.5	10.9	17.5	28.4
Recreation, personal and other services	5.8	4.8	4.6	7.4	7.1	6.2	*	21.5	17.0	38.6
Other industries	7.0		*	5.0	5.7	5.2	*	23.7	5.8	29.6
Occupation group -										
Professional, technical, etc.	5.0	5.6		6.9		*	*	10.1	11.7	21.8
Clerical	6.8	4.5	5.3	7.2	9.4	5.0	*	10.2	30.3	40.5
Sales	5.4	7.0	*	8.3	7.5	7.6	*	18.5	23.4	41.8
Farmers, fishermen, etc.	5.9		*	5.6	5.1	5.5	*	23.2	*	27.2
Transport and communication		5.5		5.9			6.1	16.1	*	17.5
Tradesmen, production-process workers and labourers, n.e.c.	23.7	17.5	21.9	36.1	41.8	59.3	17.1	194.1	23.2	217.3
Service, sport and recreation	5.4	6.2	5.5	7.9	7.3	8.2	*	21.2	23.1	44.3
Other occupations		6.2			6.6		*	12.7	*	14.3
Other	26.6	22.3	20.9	27.2	35.6	41.3	103.6	124.6	153.1	277.7
Looking for first job	14.2	12.3	10.5	16.0	19.9	24.2	16.0	51.2	61.9	113.1
Looking for full-time work	6.6	7.0	6.8	10.8	14.4	21.5	14.6	37.8	43.9	81.8
Other	12.4	10.1	10.4	11.2	15.7	17.1	87.7	73.4	91.2	164.6
Stood down	16.4	4.6	11.7	16.4
Total	96.6	67.1	67.3	100.9	114.7	136.9	135.2	435.3	283.4	718.7

TABLE 24. UNEMPLOYED PERSONS AGED 15-19:
DURATION OF UNEMPLOYMENT AND SCHOOL ATTENDANCE, SEPTEMBER 1983

	Attending school	Not attending school		
		Left school before 1982	Left school 1982 to survey date	Total
NUMBER ('000)				
Duration of unemployment (weeks) -				
Under 4	10.6	7.8	5.1	23.5
4 and under 13	12.1	14.9	12.0	39.0
13 and under 26	6.7	12.1	9.1	28.0
26 and over	10.0	52.8	27.1	89.9
Total	39.4	87.6	53.3	180.4
AVERAGE DURATION OF UNEMPLOYMENT (weeks)				
Mean duration -				
Males	21.1	42.1	27.0	33.4
Females	13.8	48.0	26.0	33.5
Persons	17.5	44.8	26.5	33.4
Looking for full-time work	19.0	45.6	26.7	36.7
Looking for part-time work	16.6	*	*	18.7
Median duration -				
Males	9.1	33.2	26.1	26.0
Females	8.0	34.1	23.1	22.0
Persons	8.0	34.0	26.0	24.1
Looking for full-time work	8.0	34.1	26.1	28.0
Looking for part-time work	8.0	*	*	8.1

TABLE 25. UNEMPLOYED PERSONS: AGE AND ACTIVE STEPS TAKEN TO FIND WORK, SEPTEMBER 1983
('000)

	Males	Females	Persons			Total
			Aged 15-19	Aged 20-24	Aged 25 and over	
Took active steps to find work	430.7	271.7	178.2	154.8	369.5	702.4
Wrote, phoned or applied in person to an employer	321.1	198.5	131.4	118.4	269.8	519.6
Answered a newspaper advertisement for a job	10.9	10.7	5.1	3.2	13.3	21.6
Checked factory or Commonwealth Employment Service noticeboards	51.9	36.9	23.5	19.8	45.5	88.8
Been registered with the Commonwealth Employment Service)	40.4	18.1	14.9	11.8	31.7	58.4
Checked or registered with any other employment agency)						
Advertised or tendered for work)	6.3	7.7	*	*	9.1	14.0
Contacted relatives or friends)						
Stood down	4.6	11.7	*	*	11.8	16.4
Total	435.3	283.4	180.4	157.0	381.3	718.7

TABLE 26. PERSONS NOT IN THE LABOUR FORCE: AGE AND MARITAL STATUS, SEPTEMBER 1983

Age group	Males			Females			Persons	Proportion of population - per cent -
	Married	Not married	Total	Married	Not married	Total		
	- '000 -							
15-19	*	255.2	255.9	15.3	237.7	253.0	508.9	40.1
20-24	5.3	56.3	61.6	122.7	57.5	180.1	241.7	18.2
25-34	20.3	29.3	49.7	511.8	50.0	561.8	611.4	24.8
35-44	30.1	18.9	49.0	368.4	43.6	412.0	461.1	22.5
45-54	46.1	16.6	62.8	316.6	52.0	368.6	431.4	28.1
55-59	58.4	17.0	75.4	211.9	50.8	262.7	338.1	44.9
60-64	151.6	27.1	178.7	217.4	83.9	301.2	480.0	72.3
65-69	171.0	37.4	208.4	166.8	109.5	276.3	484.7	90.9
70 and over	252.5	116.8	369.3	178.0	412.6	590.6	959.9	96.7
Total	736.0	574.6	1,310.7	2,109.0	1,097.5	3,206.5	4,517.2	39.0

TABLE 27. PERSONS NOT IN THE LABOUR FORCE: WHETHER LOOKING FOR WORK, ETC., SEPTEMBER 1983
('000)

	Males			Females			Persons
	Married	Not married	Total	Married	Not married	Total	
Looking for work	10.6	32.9	43.5	36.8	22.2	59.1	102.6
Took active steps to find work(a)	*	24.3	27.7	11.7	13.6	25.2	52.9
Did not take active steps to find work	7.2	8.6	15.8	25.2	8.7	33.8	49.7
Not looking for work	677.9	479.3	1,157.2	2,047.8	955.1	3,002.9	4,160.2
Permanently unable to work	27.5	16.1	43.6	10.9	21.0	31.9	75.5
In institutions	20.0	46.3	66.3	13.4	99.2	112.6	178.9
Total	736.0	574.6	1,310.7	2,109.0	1,097.5	3,206.5	4,517.2

(a) Not available to start work in the survey week for reasons other than own temporary illness or injury.

TABLE 28: ESTIMATES OF LABOUR FORCE STATUS AND GROSS CHANGES (FLOWS) DERIVED FROM MATCHED RECORDS
AUGUST 1983 AND SEPTEMBER 1983
('000)

Labour force status in - August 1983	September 1983	Males	Females		Persons
			Married	Total	
Employed full time	Employed full time	2,854.9	582.3	1,084.1	3,938.9
	Employed part time	30.9	31.8	40.9	71.8
	Unemployed	30.5	5.6	10.8	41.3
	Not in the labour force	15.8	14.8	19.4	35.2
Employed part time	Employed full time	53.7	49.2	67.8	121.5
	Employed part time	116.8	421.4	542.4	659.2
	Unemployed	11.2	9.0	15.4	26.5
	Not in the labour force	12.9	46.7	57.3	70.1
Unemployed	Employed full time	42.1	6.0	19.2	61.2
	Employed part time	11.2	9.5	18.3	29.5
	Unemployed	243.9	46.9	118.0	361.9
	Not in the labour force	21.4	25.5	41.0	62.4
Not in the labour force	Employed full time	32.0	21.8	30.1	62.2
	Employed part time	22.9	58.4	71.7	94.7
	Unemployed	37.8	35.5	67.2	105.0
	Not in the labour force	907.0	1,592.0	2,323.1	3,230.0
<hr/>					
Total flows into	Employed	108.2	95.7	139.3	247.6
	Full time	127.8	77.0	117.1	244.8
	Part time	65.0	99.7	131.0	196.0
	Unemployed	79.5	50.0	93.4	172.8
	Not in the labour force	50.1	87.0	117.6	167.7
Total flows out of	Employed	70.4	76.1	102.8	173.2
	Full time	77.2	52.2	71.1	148.4
	Part time	77.7	104.9	140.4	218.1
	Unemployed	74.7	40.9	78.4	153.1
	Not in the labour force	92.7	115.7	169.1	261.8
Total changes of status		237.8	232.7	350.3	588.1
Population represented by the matched sample		4,444.9	2,956.3	4,526.6	8,971.4

TECHNICAL NOTE

For more information on sample design, estimation procedure and reliability of the estimates, for current and earlier surveys, reference should be made to the Technical note in *The Labour Force, Australia, 1978* (6204.0).

Estimation procedure

2. The labour force estimates are derived from the population survey by use of a complex ratio estimation procedure, which ensures that the survey estimates conform to an independently estimated distribution of the population by age and sex, rather than to the age and sex distribution within the sample itself.

Reliability of the estimates

3. Two types of error are possible in an estimate based on a sample survey: sampling error and non-sampling error. The *sampling error* is a measure of the variability that occurs by chance because a sample, rather than the entire population, is surveyed. Since the estimates in this section are based on information obtained from occupants of a sample of dwellings they, and the movements derived from them, are subject to sampling variability; that is, they may differ from the figures that would have been produced if all dwellings had been included in the surveys. One measure of the likely difference is given by the *standard error*, which indicates the extent to which an estimate might have varied by chance because only a sample of dwellings was included. There are about two chances in three that a sample estimate will differ by less than one standard error from the figure that would have been obtained if all dwellings had been included, and about nineteen chances in twenty that the difference will be less than two standard errors. The standard error can also be expressed as a percentage of the estimate, and this is known as the *relative standard error*.

4. Space does not allow for the separate indication of the standard errors of all estimates in this section. Standard errors of estimates for the latest month and of estimates of movements since the previous month are shown in Table 1. Standard errors of other estimates and other monthly movements should be determined by using Tables A and B on pages 28 and 29. The introduction of a new sample in October 1982 resulted in the standard errors of movements between September and October 1982 being higher than normal (see paragraph 7). In addition, the sampling fraction for Western Australia was changed from 1 in 90 to 1 in 100 resulting in a slight increase in the standard errors of estimates for Western Australia from October 1982. See paragraphs 34 to 36, page 3 for information on sample design.

5. The size of the standard error increases with the level of the estimate, so that the larger the estimate the larger the standard error. However, it should be noted that the larger the sample estimate the smaller will be the standard error in percentage terms. Thus, larger sample estimates will be relatively more reliable than smaller estimates.

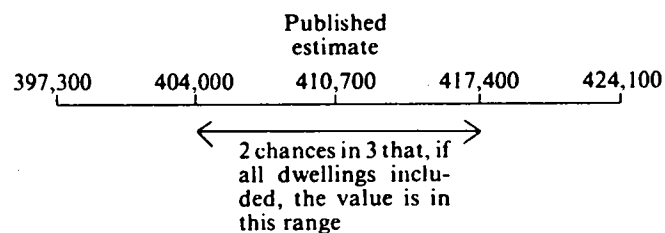
6. As the standard errors in Table A show, *the smaller the estimate the higher is the relative standard error*. Very small estimates are subject to such high standard errors (relative to the size of the estimate) as to detract seriously from their value for most reasonable uses. In the tables in this section, estimates below the levels shown in Table C, and percentages based on such estimates, have not been included. Although figures for these small components can in some cases be derived by subtraction, they should not be regarded as reliable. See paragraph 9 concerning higher publication cut-off points for some estimates.

7. The movement in the level of an estimate is also subject to sampling variability. The standard error of the movement depends on the levels of the estimates from which the movement is obtained rather than the size of the movement. An indication of the magnitude of standard errors of monthly movements (other than September to October 1982) is given in Table B on page 29. The estimates of standard error of monthly movements apply only to estimates of movements between two consecutive

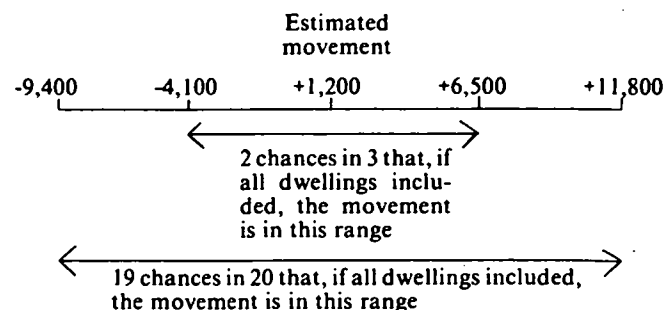
months. Movements between corresponding months of consecutive quarters (quarterly movements), corresponding months of consecutive years (annual movements) and other non-consecutive months, will generally be subject to somewhat greater sampling variability than is indicated in Table B. Because of the introduction of the new sample of dwellings in October 1982 (see paragraph 34 on page 3), there was not the usually high proportion of dwellings common to each of two consecutive surveys. The standard errors of movements between September and October 1982, and any *quarterly* movements which include this period, are therefore higher than normal. Standard errors of *monthly* and *quarterly* movements ending in October 1982 or starting in September 1982 can be obtained by multiplying the figures in Table A (page 28) by 1.4. Standard errors of *quarterly* movements for periods not including September to October 1982 can be obtained by multiplying the figures in Table B (page 29) by 1.4. Standard errors of all *annual* movements can be obtained by multiplying the figures in Table A by 1.4. When using Table A or Table B to calculate standard errors of movements, refer to the larger of the two estimates from which the movement is derived.

8. Examples of the calculation and use of standard errors are given below:

- (a) From Table A it will be seen that the estimate of 410,700 unemployed males looking for full-time work in September 1983 has a standard error of about 6,700. Therefore there are about two chances in three that the number that would have been obtained if all dwellings had been included in the survey would have been within the range 404,000 to 417,400 and about nineteen chances in twenty that it would have been within the range 397,300 to 424,100.



- (b) The estimate of movement in the number of unemployed males looking for full-time work from August to September 1983 is an increase of 1,200. Table B relates the standard error of the monthly movement to the larger of the two estimates from which the movement is derived. In this case the September 1983 estimate (410,700) is the larger. From Table B it will be seen that the standard error of the monthly movement is about 5,300. Therefore there are about two chances in three that if all dwellings had been included in the surveys the movement would have been within the range -4,100 to +6,500 and about nineteen chances in twenty that it would have been within the range -9,400 to +11,800.



9. The relative standard errors of estimates of *aggregate hours worked*, *average hours worked*, *average duration of unemployment*, and *median duration of unemployment* are obtained by first finding the relative standard error of the estimate of the total number of persons contributing to the estimate (see Table A) and then multiplying the figure so obtained by the following relevant factors:

Aggregate hours worked: 1.2
Average hours worked: 0.5
Average duration of unemployment: 1.5
Median duration of unemployment: 2.0

Publication cut-off points for these and other labour force estimates (see paragraph 6) are shown in Table C on the next page. Because of these higher relative standard errors, estimates of aggregate hours worked, average duration of unemployment, and median duration of unemployment have higher cut-off points for publication (see paragraph 6) than other estimates as shown in Table A.

10. An example of the calculation of standard errors by the use of these factors is as follows:

In September 1983 the estimate of median duration of unemployment for unemployed males was 30.1 weeks (from Table 22) and the number unemployed was estimated as 435,300. From Table A it can be estimated that this figure (435,300) has a standard error of about 6,800 and therefore a relative standard error of about 1.6 per cent. The *relative standard error* of the estimate of median duration of unemployment is calculated by multiplying this figure (1.6) by the appropriate factor shown in the previous paragraph (in this case 2.0): $1.6 \times 2.0 = 3.2$ per cent. The *standard error* of this estimate of

median duration of unemployment is therefore 3.2 per cent of 30.1, i.e. 0.9. Therefore there are about two chances in three that the median duration of unemployment for unemployed males that would have been obtained if all dwellings had been included in the survey would have been within the range 29.2 to 31.0 weeks and about nineteen chances in twenty that it would have been within the range 28.3 to 31.9 weeks.

11. The standard errors of estimates relating to agricultural employment are generally somewhat higher than the standard errors of other estimates of the same magnitude. Standard errors for capital cities are approximately the same as those for corresponding States.

12. The reliability of an estimated percentage or rate, computed by using sample data for both numerator and denominator, depends upon both the size of the numerator and the size of the denominator. However, the relative standard error of the estimated percentage will generally be slightly lower than the relative standard error of the estimate of the numerator. The relative standard errors of the numerators can be obtained from Table A.

13. The imprecision due to sampling variability, which is measured by the standard error, should not be confused with inaccuracies that may occur because of imperfections in reporting by respondents, errors made in collection such as in recording and coding of data, and errors made in processing the data. Inaccuracies of this kind are referred to as the *non-sampling error*, and they may occur in any enumeration, whether it be a full count or only a sample. Every effort is made to reduce the non-sampling error to a minimum by careful design of questionnaires, intensive training and supervision of interviewers and efficient operating procedures.

TABLE A. STANDARD ERRORS OF ESTIMATES

Size of estimate	N.S.W.	Vic.	Qld	S.A.	W.A.(a)	Tas.	N.T.	A.C.T.	Australia	
	— number —								per cent of estimate	
1,500						300	—	—		
1,800						330	440	—		
2,000						340	470	440		
2,500				510	540	380	510	480		
3,000				550	590	410	550	510		
3,500			740	590	630	430	590	540		
4,000			780	620	660	460	620	560		
4,500	1,000	1,000	820	650	700	480	650	590	970	21.6
5,000	1,100	1,100	860	680	730	500	680	610	1,000	20.0
6,000	1,200	1,200	930	730	790	530	740	650	1,100	18.0
10,000	1,500	1,400	1,200	900	970	640	910	750	1,400	14.0
20,000	2,000	1,900	1,500	1,200	1,300	810	1,200	910	2,000	10.0
50,000	3,000	2,700	2,200	1,600	1,700	1,100	1,700	1,100	2,900	5.8
100,000	3,900	3,500	2,800	2,100	2,200	1,300		1,300	3,900	3.9
200,000	5,000	4,400	3,600	2,600	2,700	1,500			5,100	2.6
300,000	5,800	5,000	4,100	2,900	3,000				6,000	2.0
500,000	6,900	5,800	4,800	3,300	3,500				7,200	1.4
1,000,000	8,500	7,000	5,900						9,100	0.9
2,000,000	10,000	8,400							11,000	0.6
5,000,000									15,000	0.3

(a) Figures revised from October 1982—See paragraph 35, page 4.

TABLE B. STANDARD ERRORS OF ESTIMATES OF MONTHLY MOVEMENTS

Size of larger estimate	N.S.W.	Vic.	Qld	S.A.	W.A.	Tas.	N.T.	A.C.T.	Australia
1,500						250			
1,800						260	370		
2,000						270	380	370	
2,500				490	520	290	420	390	
3,000				520	560	310	460	410	
3,500			730	540	590	330	490	430	
4,000			760	570	610	340	520	450	
4,500	1,100	1,100	790	590	640	360	550	460	1,100
5,000	1,100	1,100	820	610	660	370	570	480	1,200
6,000	1,200	1,200	880	650	700	390	620	500	1,200
10,000	1,400	1,400	1,000	760	830	460	760	570	1,500
20,000	1,800	1,700	1,300	930	1,000	550	1,000	670	2,000
50,000	2,500	2,300	1,700	1,200	1,300	690	1,400	790	2,700
100,000	3,200	2,800	2,100	1,400	1,600	810		880	3,400
200,000	3,900	3,300	2,500	1,700	1,900	920			4,300
300,000	4,400	3,700	2,800	1,900	2,100				4,900
500,000	5,100	4,200	3,200	2,100	2,300				5,700
1,000,000	6,100	4,900	3,800						6,800
2,000,000	7,200	5,600							8,200
5,000,000									10,000

TABLE C. PUBLICATION CUT-OFF POINTS FOR LABOUR FORCE ESTIMATES(a)

	N.S.W.	Vic.	Qld	S.A.	W.A.	Tas.	N.T.	A.C.T.	Aust.
<i>Estimates classified by—</i>									
Aggregate hours worked	5,400	5,400	4,200	3,000	3,000	1,800	2,200	2,400	5,400
Average hours worked	2,300	2,300	1,800	1,300	1,300	800	900	1,000	2,300
Average (mean) duration of unemployment	6,800	6,800	5,300	3,800	3,800	2,300	2,700	3,000	6,800
Median duration of unemployment	9,000	9,000	7,000	5,000	5,000	3,000	3,600	4,000	9,000
All other estimates	4,500	4,500	3,500	2,500	2,500	1,500	1,800	2,000	4,500

(a) See paragraphs 6 and 9, pages 27 and 28.

SUPPLEMENTARY AND SPECIAL SURVEYS RELATING TO THE LABOUR FORCE

Although emphasis in the population survey is placed on the regular collection of data on demographic and labour force characteristics, supplementary and special surveys of particular aspects of the labour force are carried out from time to time. The results of these surveys on labour force and related topics are published separately as shown below.

For more information about these publications, contact Susan Purcell on Canberra (062) 52 6503 or any of our State offices.

<i>Title of Publication</i>	<i>Catalogue No.</i>
Alternative Working Arrangements, Australia, March-May 1982 (Preliminary)	6340.0
Annual and Long Service Leave, August 1974; May 1979	6317.0
Assisted and Unassisted Migrants, August 1972; March 1980	3406.0
Career Paths of Persons with Trade Qualifications, Australia, September to November, 1982 (Preliminary)	6242.0
Child Care-May 1969, 1973, 1977; June 1980	4402.0
Educational Experience and Intentions Survey, Australia, 1979	4212.0
Employed Married Women in the Labour Force, November 1979 (Queensland)	6203.3
Employment Benefits, February-May 1979	6334.0
Employment Status of Teenagers, August 1978(b)	6234.0
Evening and Night Work, November 1976	6329.0
Ex-service Personnel, November 1966, 1971; October 1979	4403.0
Family Status and Employment Status of the Population, November 1974 and 1975(a)	6223.0
Frequency of Pay, August 1974, 1976 and 1977	6320.0
Income Distribution, 1968-69 (Consolidated and Revised Edition)	6505.0
Income Distribution, Australia, 1978-79:	
Individuals	6502.0
Income Units	6523.0
Unemployed Persons	6521.0
Supplementary Tables	6504.0
Job Tenure, February 1974; February 1975; August 1976	6211.0
Journey to Work and Journey to School, May 1970; August 1974	9205.0
Labour Force Experience—	
During 1968; 1972; 1974; 1975; 1976; 1978; 1979; Year ending February 1981, February 1982	6206.0
Preliminary—Year ending February 1983	6205.0
Labour Force Status and Educational Attainment, Australia (previously 'The Labour Force: Educational Attainment'), February 1979, 1980, 1981, 1982	6235.0
Preliminary—February 1983	6240.0
Labour Force Status and Other Characteristics of Families, November 1974; July 1979 and 1980; June 1981; July 1982(b)	6224.0
Labour Mobility, November 1972; February 1975, 1976, 1979, 1980, 1981 and 1982	6209.0
Preliminary—February 1983	6208.0
Methods of Obtaining Jobs, July 1982 (Preliminary)	6244.0
Migrants in the Labour Force, 1972 to 1976(c)	6230.0
Multiple Jobholding—	
November 1965; August 1966 and 1967; May 1971; August 1973, 1975, 1977, 1979 and 1981	6216.0
Non-School Study Courses, Survey of, August 1968	Not listed
Persons Ceasing Full-time Work, Australia, May 1980	6238.0
Persons Aged 15 to 64 Years: Employment Status and Period Since Leaving School, May 1976	6225.0
Persons Not in the Labour Force (including Discouraged Jobseekers)—	
November 1975; May 1977; March 1979; September 1979; March 1980;	
September 1980; March 1981; September 1981; March 1982	6220.0
September 1982; March 1983	6219.0
Persons Looking for Work, Characteristics of—	
May 1976; November 1976; May 1977; July 1978, 1979 and 1980; June 1981; July 1982	6222.0
Preliminary—July 1983	6221.0
Post School Qualifications of Tradesmen and Other Employed Persons, New South Wales, November 1979	6202.1
School Leavers, 1970 to 1974: Their Employment Status and Education Experience in May 1975	6226.0
Superannuation, Survey of, February 1974	6319.0
Survey of Handicapped Persons, Australia, February-May 1981 (Preliminary)	4342.0
Survey of Persons Registered with the CES as Unemployed, March 1977	6229.0
The Labour Force: Country of Birth and Period of Residence, February 1972	6207.0
Trade Union Members, November 1976, March-May 1982	6325.0
Transition From Education to Work (Including leavers from schools, universities, and other educational institutions). Conducted each year since 1964. Previously titled 'Leavers from Schools, Universities and other Educational Institutions'. Latest issue May 1983 (Preliminary)	6227.0
Weekly Earnings of Employees (Distribution) August 1975 to August 1982 (annually)	6310.0
Work Patterns of Employees, November 1976	6328.0
Working Conditions, February-May 1979	6335.0
Working Hours Arrangements, Australia, February-May 1981	6338.0
Supplementary Tables	6339.0

(a) See also *Labour Force Status and Other Characteristics of Families* (6224.0). (b) See also *Family Status and Employment Status of the Population, November 1974 and 1975* (6223.0) (c) Estimates derived from labour force surveys. For more recent estimates, see the relevant tables in this publication.

PART 2. GOVERNMENT EMPLOYMENT

EXPLANATORY NOTES

This part contains details of the numbers of employees of government bodies. Figures for months prior to May 1980 were published in *Civilian Employees, Australia* (6213.0). In future government employment figures will not be included in this publication. They will be published quarterly in two new publications *Employed Wage and Salary Earners, Australia (Preliminary)* (6247.0), with more detail being included in *Employed Wage and Salary Earners, Australia* (6248.0). The first publication, the preliminary, is expected to be released in December 1983.

2. Government employees comprise not only administrative employees but also all other employees of government bodies (Commonwealth, State, local and semi-government) on services such as railways, road transport, banks, postal and telecommunications, air transport, education (including universities, colleges of advanced education, etc.), radio, television, police, public works, factories, marketing authorities, public hospitals (other than those run by charitable or religious organisations) and departmental hospitals and institutions.

3. The numbers of employees shown in this part have been derived from returns obtained from government bodies. Generally, Commonwealth government employees are included in the figures if they are on the payroll on the last working day of the month, whereas for State and local government the reporting date is usually the last day of the last pay period ending in the month.

4. Data shown for defence forces include all permanent defence personnel in Australia and overseas. Other government employees based overseas are excluded, as are employees of foreign governments in Australia.

Comparability of labour force survey estimates and government employment figures

5. The government employment figures shown in this part are not strictly comparable with the labour force survey estimates included in Part 1 of this publication and in other ABS publications. Persons in the survey are allocated to an appropriate labour force category according to their activity during the survey week. If they had more than one job in that week only the job in which they usually worked the greater number of hours is considered. The government employment figures are derived from direct returns from government bodies, and although some returns are adjusted to exclude some part-time employees considered to have full-time jobs elsewhere, some persons will be included even though their government job is not their main one. Other reasons for difference are that the survey estimates are subject to sampling variability, and the reference periods of the two collections are different.

Review of ABS employment statistics

6. The two principal series of employment statistics produced by the ABS have been the employment series derived from the labour force survey (based on a sample of households) and the civilian employees series derived from data obtained from employers' payroll records (mainly payroll tax returns, in the case of the private sector). The former series has provided estimates of total

employment and information on the characteristics of employed persons (including employers and self-employed). The latter has provided estimates for wage and salary earners only, but with a dissection of employment by industry more detailed than that provided by the labour force survey.

7. The series have differed in coverage, definition, sources of information, methods of collection and estimation procedures. The survey estimates are subject to sampling variability and both series are subject to non-sampling errors. The payroll-based civilian employees series has suffered from the particular problem that, because of limits below which payroll tax is not levied, no information has been available to the ABS about changes in the employment levels of the large number of smaller businesses which are not liable for payroll tax. Without current information, employment for these small businesses has generally been assumed to vary in proportion to the variation in the employment of larger employers. This assumption has long been regarded by the ABS as unsatisfactory.

8. The civilian employees series and the labour force survey series have frequently displayed different movements, but from late in 1979 the survey-based series grew much more rapidly than the payroll-based series. This growing divergence led to the decision by the Australian Statistician in July 1980 that publication of the civilian employees series should be suspended and that the ABS should undertake a review of the series and also of some aspects of the employment series derived from the labour force survey.

9. Following the review and discussions held with a number of Commonwealth and State Departments which are users of the statistics, the Statistician concluded that payroll tax returns could no longer provide an adequate basis for estimates of numbers of civilian employees and wages and salaries paid. Instead it would be necessary to conduct a quarterly sample survey of about 20,000 business units in the private sector, to collect information about the number and earnings of their employees. The survey results will be supplemented by the information collected from government bodies.

10. Development work on the new survey has now been completed. Estimates for the first survey, September Quarter 1983, are expected to be released in *Employed Wage and Salary Earners, Australia (Preliminary)* (6247.0) in December 1983.

11. For further details on the review of the employment statistics see *Information Paper: Review of ABS Employment Statistics* (6239.0).

Inquiries

12. For more information about these statistics contact Mr Terry Sharp on Canberra (062) 52 6655.

TABLE 29. GOVERNMENT EMPLOYEES, AUSTRALIA(a)
(Excluding Agriculture and services to agriculture)
(' 000)

Civilian employees							
Month	Common-wealth	State	Northern Territory	Local	Total	Defence forces(b)	Total Government
MALES							
1982—							
May	275.1	581.8	7.7	104.1	968.7	68.6	1,037.3
June	274.7	582.3	7.6	104.5	969.0	68.5	1,037.5
July	273.9	581.2	7.5	104.2	966.8	68.5	1,035.3
August	274.4	580.9	7.5	104.2	967.0	68.4	1,035.4
September	275.0	580.5	7.5	104.1	967.2	68.3	1,035.5
October	275.5	r580.1	7.6	104.2	r967.3	68.4	r1,035.7
November	276.2	r579.8	7.6	104.3	r967.9	68.3	r1,036.2
December	277.1	r578.1	7.5	104.4	r967.1	68.1	r1,035.2
1983—							
January	276.4	r579.2	7.6	104.7	r968.0	68.5	r1,036.5
February	276.7	582.2	7.6	105.7	972.2	68.7	1,040.9
March	276.1	585.2	7.7	105.8	974.8	68.7	1,043.5
April	276.9	585.5	7.7	107.3	977.4	68.5	1,045.9
May	276.7	586.0	7.8	108.0	978.5	68.5	1,047.0
June	276.7	586.6	7.7	107.1	978.1	68.3	1,046.4
FEMALES							
1982—							
May	128.5	r422.4	6.6	28.8	r586.4	4.7	r591.1
June	127.4	427.5	6.6	28.9	590.5	4.7	595.2
July	128.2	426.7	6.5	29.0	590.4	4.7	595.1
August	128.7	428.1	6.3	28.9	592.0	4.7	596.7
September	129.6	428.8	6.3	29.2	594.0	4.7	598.7
October	130.0	429.4	6.4	29.4	595.2	4.7	599.9
November	130.9	427.6	6.3	29.6	594.3	4.7	599.0
December	131.5	422.1	6.1	29.3	589.1	4.6	593.7
1983—							
January	130.8	r410.1	6.3	29.2	r576.4	4.6	r581.0
February	131.2	423.9	6.4	30.0	591.5	4.6	596.1
March	131.4	429.0	6.3	30.3	597.1	4.5	601.6
April	132.5	431.5	6.5	30.5	601.1	4.5	605.6
May	133.0	428.7	6.6	30.8	599.1	4.5	603.6
June	132.5	434.0	6.5	31.1	604.1	4.5	608.6
PERSONS							
1982—							
May	403.7	r1,004.2	14.2	133.0	r1,555.1	73.3	r1,628.4
June	402.1	1,009.8	14.2	133.4	1,559.5	73.2	1,632.7
July	402.1	1,007.9	14.1	133.2	1,557.2	73.2	1,630.4
August	403.1	1,009.0	13.8	133.1	1,559.0	73.1	1,632.1
September	404.6	1,009.4	13.9	133.3	1,561.1	73.0	1,634.1
October	405.5	1,009.5	13.9	133.6	1,562.5	73.1	1,635.6
November	407.0	1,007.5	13.9	133.9	1,562.3	73.0	1,635.3
December	408.6	1,000.2	13.7	133.8	1,556.2	72.7	1,628.9
1983—							
January	407.2	r989.3	13.8	134.0	r1,544.4	73.1	r1,617.5
February	408.0	1,006.1	14.0	135.7	1,563.7	73.2	1,636.9
March	407.5	1,014.2	14.0	136.1	1,571.8	73.2	1,645.0
April	409.4	1,017.0	14.2	137.9	1,578.4	73.1	1,651.5
May	409.7	1,014.7	14.4	138.8	1,577.5	72.9	1,650.4
June	409.2	1,020.6	14.3	138.2	1,582.2	72.8	1,655.0

(a) See Explanatory notes to this section. (b) Permanent defence forces in Australia and overseas.

TABLE 30. GOVERNMENT EMPLOYEES, STATES(a)
(Excluding Agriculture and services to agriculture)
('000)

Month	Commonwealth(b)			State			Local			Total(b)		
	Males	Females	Persons	Males	Females	Persons	Males	Females	Persons	Males	Females	Persons
NEW SOUTH WALES												
1982—												
May	86.1	40.8	126.9	193.6	146.3	339.9	48.7	8.9	57.7	328.4	196.0	524.5
June	86.0	40.6	126.6	193.8	145.8	339.6	48.7	8.9	57.6	328.5	195.3	523.9
July	85.4	40.6	126.1	193.6	145.2	338.8	48.4	8.9	57.3	327.4	194.7	522.1
August	85.5	40.8	126.4	193.2	145.1	338.3	48.2	8.8	57.0	326.9	194.7	521.6
September	85.8	41.2	127.0	193.1	144.9	338.0	48.3	8.9	57.2	327.2	195.0	522.2
October	85.9	41.2	127.2	192.6	145.2	337.8	48.3	9.0	57.3	326.8	195.4	522.2
November	86.0	41.4	127.4	191.7	144.3	336.0	48.3	9.0	57.3	326.0	194.8	520.7
December	86.3	41.6	127.9	190.7	142.9	333.6	48.3	9.1	57.4	325.3	193.7	519.0
1983—												
January	86.1	41.5	127.6	190.9	137.8	328.7	48.6	9.2	57.7	325.6	188.4	514.0
February	85.8	41.6	127.4	191.7	143.4	335.2	49.0	9.2	58.2	326.6	194.2	520.8
March	85.6	41.7	127.3	192.1	144.6	336.7	48.9	9.3	58.2	326.6	195.6	522.2
April	85.8	42.0	127.9	192.0	145.6	337.6	50.0	9.4	59.4	327.8	197.1	524.9
May	85.5	42.0	127.5	192.7	146.7	339.4	49.9	9.5	59.4	328.1	198.2	526.3
June	85.5	41.7	127.2	192.7	147.3	340.0	49.4	9.4	58.8	327.6	198.4	525.9
VICTORIA												
1982—					r	r					r	r
May	68.1	29.2	97.3	154.5	113.8	268.3	20.8	12.9	33.8	243.5	155.9	399.3
June	67.9	28.7	96.5	154.6	115.2	269.7	20.8	12.9	33.7	243.2	156.8	400.0
July	67.7	28.9	96.6	154.6	115.2	269.8	20.8	13.0	33.8	243.1	157.1	400.3
August	67.8	29.0	96.8	154.4	115.9	270.3	20.8	12.9	33.7	242.9	157.8	400.7
September	67.7	29.0	96.7	154.2	116.8	271.0	20.7	13.1	33.9	242.7	158.9	401.6
October	67.8	29.0	96.8	r154.3	117.0	271.3	20.7	13.2	34.0	r242.8	159.2	402.0
November	68.0	29.2	97.2	r154.8	116.1	271.0	20.9	13.3	34.2	r243.7	158.7	402.4
December	68.0	29.3	97.4	r155.3	115.3	270.6	21.0	13.0	34.0	r244.4	157.6	402.0
1983—				r	r	r				r	r	r
January	68.2	29.4	97.6	156.0	115.3	271.3	21.0	12.8	33.8	245.3	157.4	402.8
February	68.4	29.5	97.9	156.4	115.9	272.3	21.1	13.5	34.6	245.9	159.0	404.9
March	68.2	29.3	97.5	157.8	118.0	275.8	21.1	13.7	34.8	247.2	161.0	408.1
April	68.4	29.6	98.0	158.1	118.5	276.6	21.5	13.7	35.2	247.9	161.8	409.8
May	68.3	29.6	97.9	158.4	118.5	276.9	21.8	13.7	35.5	248.5	161.8	410.2
June	68.2	29.5	97.7	158.3	118.7	276.9	21.3	14.1	35.5	247.8	162.3	410.1
QUEENSLAND												
1982—												
May	31.6	14.9	46.4	99.3	57.8	157.1	19.0	2.7	21.7	149.9	75.4	225.3
June	31.5	14.7	46.2	99.2	58.2	157.4	19.3	2.9	22.2	150.0	75.8	225.8
July	31.6	14.9	46.6	98.5	58.0	156.5	19.5	2.9	22.4	149.7	75.8	225.5
August	31.7	15.0	46.7	98.6	58.3	156.9	19.8	2.9	22.8	150.1	76.2	226.3
September	31.8	15.2	47.0	98.5	58.1	156.7	19.7	2.9	22.6	150.0	76.3	226.2
October	31.9	15.4	47.2	98.5	58.0	156.5	19.7	2.9	22.6	150.0	76.3	226.3
November	31.9	15.5	47.4	98.5	57.9	156.4	19.7	2.9	22.6	150.1	76.3	226.4
December	32.1	15.6	47.7	98.0	56.5	154.5	19.7	2.9	22.6	149.8	75.1	224.9
1983—												
January	31.9	15.4	47.3	98.2	55.8	154.0	19.6	2.9	22.5	149.7	74.1	223.8
February	31.9	15.4	47.3	99.2	56.9	156.1	19.9	2.9	22.8	151.0	75.3	226.3
March	31.9	15.4	47.3	99.4	57.7	157.1	19.9	2.9	22.9	151.2	76.1	227.3
April	32.1	15.6	47.6	99.6	57.9	157.5	20.1	3.1	23.1	151.7	76.5	228.2
May	32.0	15.6	47.7	99.7	58.1	157.8	20.5	3.1	23.6	152.2	76.8	229.0
June	32.1	15.7	47.7	99.8	57.8	157.6	20.5	3.2	23.7	152.3	76.6	229.0

For footnotes see end of table.

TABLE 30. GOVERNMENT EMPLOYEES, STATES(a)—continued
(Excluding Agriculture and services to agriculture)
(^{' 000})

Month	Commonwealth(b)			State			Local			Total(b)		
	Males	Females	Persons	Males	Females	Persons	Males	Females	Persons	Males	Females	Persons
SOUTH AUSTRALIA												
1982—												
May	29.1	8.3	37.4	52.1	42.8	94.9	5.4	1.6	7.0	86.6	52.7	139.3
June	29.1	8.2	37.3	52.5	46.4	98.9	5.4	1.6	7.0	86.9	56.2	143.2
July	29.0	8.3	37.3	52.5	46.5	99.0	5.3	1.6	7.0	86.8	56.5	143.3
August	29.0	8.3	37.3	52.6	46.7	99.3	5.3	1.6	6.9	86.9	56.6	143.5
September	28.9	8.3	37.3	52.5	46.5	99.1	5.3	1.6	6.9	86.7	56.5	143.3
October	28.8	8.4	37.2	52.5	46.5	99.0	5.3	1.6	6.9	86.6	56.5	143.1
November	28.9	8.4	37.4	52.7	46.8	99.5	5.3	1.7	7.0	86.9	56.9	143.8
December	29.0	8.5	37.5	52.2	45.9	98.1	5.3	1.7	7.0	86.5	56.0	142.6
1983—												
January	29.0	8.5	37.4	51.9	41.2	93.0	5.3	1.7	7.0	86.1	51.3	137.4
February	29.0	8.4	37.4	52.6	46.2	98.8	5.3	1.7	7.0	86.9	56.3	143.2
March	28.8	8.4	37.2	53.0	46.5	99.5	5.3	1.7	7.1	87.1	56.6	143.8
April	28.8	8.5	37.3	53.2	46.9	100.1	5.3	1.7	7.0	87.3	57.1	144.4
May	28.8	8.5	37.3	52.5	42.9	95.3	5.3	1.7	7.0	86.6	53.1	139.7
June	28.7	8.5	37.2	53.1	47.4	100.5 ^b	5.3	1.7	7.0	87.1	57.6	144.7
WESTERN AUSTRALIA												
1982—												
May	16.2	7.8	24.0	61.8	45.4	107.2	7.3	1.9	9.2	85.3	55.1	140.4
June	16.2	7.6	23.8	61.9	45.6	107.4	7.3	1.9	9.2	85.3	55.1	140.5
July	16.1	7.7	23.8	61.8	45.4	107.2	7.3	1.9	9.2	85.1	55.0	140.2
August	16.2	7.8	24.0	61.9	45.6	107.5	7.3	1.9	9.2	85.4	55.3	140.7
September	16.2	7.8	24.0	62.0	46.0	108.0	7.3	1.9	9.2	85.5	55.7	141.2
October	16.3	7.8	24.1	62.1	46.1	108.2	7.3	1.9	9.2	85.7	55.9	141.6
November	16.3	7.9	24.2	62.1	45.9	108.0	7.3	2.0	9.3	85.7	55.8	141.5
December	16.6	7.9	24.5	61.9	45.1	106.9	7.2	2.0	9.2	85.6	55.0	140.7
1983—												
January	16.2	7.7	24.0	62.2	44.5	106.7	7.3	2.0	9.3	85.7	54.2	139.9
February	16.3	7.8	24.1	62.2	45.7	107.9	7.3	2.0	9.3	85.8	55.4	141.3
March	16.3	7.9	24.2	62.9	46.4	109.3	7.4	2.0	9.3	86.5	56.3	142.8
April	16.3	8.0	24.3	62.7	46.6	109.3	7.4	2.0	9.3	86.4	56.6	143.0
May	16.4	8.0	24.4	62.7	46.7	109.4	7.4	2.0	9.4	86.4	56.7	143.2
June	16.4	7.9	24.3	62.7	47.0	109.7	7.4	2.0	9.4	86.5	56.9	143.5
TASMANIA												
1982—												
May	7.1	2.4	9.5	20.4	16.4	36.9	2.6	0.5	3.1	30.1	19.3	49.4
June	7.1	2.4	9.5	20.4	16.4	36.8	2.5	0.5	3.1	30.1	19.3	49.3
July	7.1	2.4	9.5	20.2	16.4	36.6	2.5	0.5	3.0	29.8	19.3	49.2
August	7.1	2.4	9.5	20.2	16.5	36.7	2.5	0.5	3.1	29.8	19.5	49.3
September	7.2	2.4	9.6	20.1	16.5	36.7	2.5	0.5	3.0	29.9	19.5	49.3
October	7.2	2.4	9.6	20.1	16.6	36.7	2.5	0.5	3.1	29.8	19.6	49.4
November	7.2	2.4	9.6	20.1	16.5	36.6	2.5	0.5	3.1	29.8	19.5	49.3
December	7.2	2.4	9.7	20.0	16.4	36.4	2.5	0.5	3.1	29.8	19.3	49.1
1983—												
January	7.2	2.5	9.7	20.0	15.6	35.6	2.6	0.5	3.1	29.8	18.6	48.4
February	7.2	2.5	9.7	20.1	15.7	35.8	2.6	0.5	3.2	29.9	18.8	48.7
March	7.2	2.5	9.7	20.0	15.9	35.9	2.7	0.5	3.2	30.0	18.9	48.9
April	7.2	2.5	9.7	20.0	15.9	35.9	2.7	0.5	3.2	29.9	18.9	48.8
May	7.2	2.5	9.7	20.0	15.9	35.9	2.7	0.5	3.2	29.9	18.9	48.8
June	7.2	2.5	9.7	20.1	15.8	35.9	2.7	0.5	3.2	30.0	18.8	48.8

(a) See Explanatory notes to this section. (b) Excludes members of the permanent defence forces in Australia and overseas.

TABLE 31. GOVERNMENT EMPLOYEES—NORTHERN TERRITORY(a)
(Excluding Agriculture and services to agriculture)
(' 000)

Month	Commonwealth(b)			Northern Territory			Local			Total(b)		
	Males	Females	Persons	Males	Females	Persons	Males	Females	Persons	Males	Females	Persons
1982—												
May	2.6	1.3	3.9	7.7	6.6	14.2	0.4	0.1	0.5	10.7	8.0	18.7
June	2.7	1.3	3.9	7.6	6.6	14.2	0.4	0.1	0.5	10.6	8.0	18.6
July	2.7	1.3	3.9	7.5	6.5	14.1	0.4	0.1	0.5	10.5	8.0	18.5
August	2.7	1.3	4.0	7.5	6.3	13.8	0.4	0.1	0.5	10.5	7.8	18.3
September	2.7	1.3	4.0	7.5	6.3	13.9	0.4	0.1	0.5	10.6	7.8	18.3
October	2.7	1.3	4.0	7.6	6.4	13.9	0.4	0.1	0.5	10.6	7.8	18.4
November	2.7	1.3	4.0	7.6	6.3	13.9	0.4	0.1	0.5	10.6	7.8	18.4
December	2.7	1.4	4.1	7.5	6.1	13.7	0.4	0.1	0.5	10.6	7.6	18.2
1983—												
January	2.7	1.4	4.1	7.6	6.3	13.8	0.4	0.1	0.5	10.6	7.8	18.4
February	2.7	1.4	4.1	7.6	6.4	14.0	0.4	0.1	0.5	10.7	7.9	18.6
March	2.7	1.4	4.1	7.7	6.3	14.0	0.4	0.1	0.5	10.8	7.9	18.6
April	2.7	1.4	4.1	7.7	6.5	14.2	0.5	0.1	0.6	10.8	8.0	18.9
May	2.7	1.4	4.1	7.8	6.6	14.4	0.5	0.2	0.6	11.0	8.2	19.1
June	2.7	1.4	4.1	7.7	6.5	14.3	0.5	0.2	0.6	10.9	8.1	19.0

(a) See Explanatory notes to this section. (b) Excludes members of the permanent defence forces in Australia and overseas.

TABLE 32. GOVERNMENT EMPLOYEES—AUSTRALIAN CAPITAL TERRITORY(a)
(Excluding Agriculture and services to agriculture)
(' 000)

Month	Commonwealth(b)		
	Males	Females	Persons
1982—			
May	34.2	24.0	58.2
June	34.3	23.9	58.2
July	34.2	24.1	58.3
August	34.4	24.1	58.5
September	34.7	24.3	59.0
October	34.9	24.6	59.4
November	35.1	24.7	59.8
December	35.1	24.7	59.8
1983—			
January	35.0	24.5	59.5
February	35.4	24.7	60.0
March	35.3	24.8	60.2
April	35.5	25.0	60.6
May	35.8	25.3	61.1
June	35.9	25.4	61.3

For footnotes, see previous table.

TABLE 33. COMMONWEALTH GOVERNMENT EMPLOYEES, JUNE 1983(a)
Part I-Staff (in Australia and overseas) employed under the Public Service Act (excluding Departments of the Parliament)

<i>Body</i>	<i>Males</i>	<i>Females</i>	<i>Persons</i>
Aboriginal Affairs	457	322	779
Administrative Services	4,276	1,334	5,610
Attorney-General's(b)	1,177	1,483	2,660
Australian Legal Aid Office	73	110	183
Human Rights Commission	14	23	37
Office of the Parliamentary Counsel	13	18	31
Trade Practices Commission	109	76	185
Aviation	9,894	1,377	11,271
Communications(b)	548	247	795
Australian Broadcasting Tribunal	61	38	99
Special Broadcasting Service	145	150	295
Defence	18,135	6,829	24,964
Defence Support	4,861	1,162	6,023
Education and Youth Affairs(b)	748	887	1,635
A.C.T. Schools Authority	232	697	929
Schools Commission	72	97	169
Tertiary Education Commission	43	54	97
Employment and Industrial Relations(b)	4,037	3,682	7,719
Industrial Relations Bureau	162	74	236
Finance(b)	563	410	973
Australian Government Retirement Benefits Office	175	256	431
Australian Taxation Office	8,111	6,812	14,923
Foreign Affairs(b)	2,235	1,804	4,039
Australian Development Assistance Bureau	238	179	417
ADAB Aid Experts	94	12	106
Health(b)	2,309	2,767	5,076
Capital Territory Health Commission	324	811	1,135
Home Affairs and Environment(b)	171	154	325
Australian Archives	192	160	352
Australian Heritage Commission	9	10	19
Australian National Parks and Wildlife Service	69	23	92
Australian War Memorial	111	65	176
Great Barrier Reef Marine Park Authority	30	20	50
National Library of Australia	231	470	701
Office of the Supervising Scientist	46	19	65
Housing and Construction	7,725	1,332	9,057
Immigration and Ethnic Affairs	1,098	1,051	2,149
Industry and Commerce(b)	4,029	1,478	5,507
Industries Assistance Commission	194	124	318
Primary Industry(b)	2,601	423	3,024
Bureau of Agricultural Economics	219	78	297
Prime Minister and Cabinet(b)	267	270	537
Auditor-General's Office	470	142	612
Australian Science and Technology Council	6	8	14
Office of National Assessment	55	25	80
Ombudsman	28	34	62
Public Service Board	425	407	832
Service-wide Trainees	126	38	164
Resources and Energy(b)	604	227	831
Bureau of Mineral Resources	432	119	551
Science and Technology(b)	771	330	1,101
Bureau of Meteorology	1,433	266	1,699
Patents, Trade Marks and Designs Office	304	206	510
Social Security	6,821	9,842	16,663
Special Minister of State(b)	487	937	1,424
Australian Electoral Office	393	373	766
Sport, Recreation and Tourism	34	30	64
Territories and Local Government	2,614	1,029	3,643
Trade(b)	670	437	1,107
Australian Uranium Export Office	5	2	7
Export Development Grants Board	80	17	97
Transport(b)	1,091	232	1,323
Bureau of Transport Economics	75	24	99
Treasury(b)	375	191	566
Australian Bureau of Statistics	2,238	1,428	3,666
Petroleum Products Pricing Authority	14	4	18
Royal Australian Mint	269	50	319
Veterans' Affairs	4,997	7,494	12,491
Total under Public Service Act(c)	100,915	61,280	162,195

For footnotes see end of table.

TABLE 33. COMMONWEALTH GOVERNMENT EMPLOYEES, JUNE 1983(a)—continued
Part II-Staff (in Australia) employed under other Acts

<i>Body</i>	<i>Males</i>	<i>Females</i>	<i>Persons</i>
DEPARTMENTS			
Special Minister of State (Australian Federal Police)	2,458	361	2,819
Defence (naval defence)	795	79	874
Defence Support (munitions factories, weapons research, naval dockyards etc.)	7,849	1,583	9,432
Education	1,519	2,689	4,208
Health-(Capital Territory Health Commission)	584	2,482	3,066
Other	196	125	321
<i>Total departments</i>	<i>13,401</i>	<i>7,319</i>	<i>20,720</i>
OTHER BODIES			
A.C.T. Electricity Authority	658	79	737
Australian Atomic Energy Commission	928	191	1,119
Australian Broadcasting Commission	4,576	2,048	6,624
Australian National Railways	9,962	504	10,466
Australian National University	2,244	1,687	3,931
Australian Postal Commission	26,674	8,535	35,209
Army and Air Force Canteens Service	105	278	383
Australian Shipping Commission	3,150	175	3,325
Australian Telecommunications Commission	70,017	21,126	91,143
CSIRO	5,754	1,888	7,642
Canberra College of Advanced Education	620	533	1,153
Commonwealth Banking Corporation	16,630	17,126	33,756
Commonwealth Accommodation and Catering Services Ltd	495	1,177	1,672
Commonwealth Serum Laboratories Commission	665	344	1,009
Departments of the Parliament	449	293	742
Health Insurance Commission	452	1,378	1,830
National Capital Development Commission	243	97	340
Overseas Telecommunications Commission	2,106	409	2,515
Qantas Airways Ltd	7,808	1,836	9,644
Reserve Bank of Australia	2,026	1,703	3,729
Snowy Mountains Engineering Corporation	348	82	430
Snowy Mountains Hydro-Electric Authority	639	63	702
Trans-Australia Airlines	6,031	2,083	8,114
Other	2,762	1,893	4,655
<i>Total other bodies</i>	<i>165,342</i>	<i>65,528</i>	<i>230,870</i>
Total under other Acts(c)(d)	178,743	72,847	251,590

(a) Excludes members of the permanent defence forces. (b) Excludes branch(es) shown separately. (c) Includes 4,537 employees overseas and 3,005 part-time employees in Australia in June 1983. (d) The totals of employment under the Public Service Act and under other Acts differ from those shown for Commonwealth Government in Table 29 because, for persons employed under the Public Service Act, overseas staff are included; also some part-time employees are excluded from Table 29 in order to avoid double counting.

PART 3. JOB VACANCIES

NOTE. Estimates of job vacancies are included in this publication for the last time. In future, these statistics will be published only in *Job Vacancies, Australia* (6231.0) on a quarterly basis.

Surveys of job vacancies were conducted in March each year from 1974 to 1978 and quarterly, by telephone, from May 1977 to May 1978, after which they were suspended. The quarterly surveys were reintroduced in May 1979. For further details and estimates for earlier periods see *Job Vacancies, Australia, May 1982* (6231.0).

A job vacancy is defined as a job available for immediate filling on the survey date and for which recruitment action has been taken by the employer. Jobs available only to existing employees of an organisation are excluded. In this context the Australian Public Service and the Public Services of the States and the Northern Territory are treated as 'organisations'.

For more information about these statistics, contact Mr Patrick Stakelum on Canberra (062) 52 6577 or any of our State offices.

TABLE 34. JOB VACANCIES
('000)

AUSTRALIA									
	May 1982	August 1982	November 1982	February 1983	May 1983	August 1983	Standard error		
Manufacturing	4.9	3.7	1.8	2.1	2.2	2.9	0.3		
Metal products, machinery and equipment	2.0	1.3	0.8	0.6	0.8	1.5	0.2		
Basic metal and fabricated metal products, other machinery, etc.	1.2	0.5	0.5	0.6	0.8	1.5	0.2		
Transport equipment	0.9	0.8	0.3						
Other manufacturing	2.9	2.4	1.0	1.4	1.3	1.4	0.3		
Wholesale and retail trade	3.3	3.6	1.4	2.3	2.8	2.0	0.6		
Transport and storage; communication	1.7	0.9	0.7	0.5	0.4	0.5	0.1		
Public administration; community services	9.4	8.7	8.4	8.8	8.4	7.9	0.9		
Mining	0.5	0.6	0.4	3.0	3.7	3.4	0.6		
Other	4.8	3.4	3.2						
Total	25.3	21.5	16.4	16.9	17.5	16.7	1.2		
STATES AND TERRITORIES									
Month	N.S.W.	Vic.	Qld	S.A.	W.A.	Tas.	N.T.	A.C.T.	Australia
Total—									
1982—									
August	7.4	6.9	3.1	1.0	(a)1.7	(a)0.5	0.4	0.6	21.5
1983—									
May	6.9	5.3	1.7	1.0	*	(a)0.3	0.3	0.6	17.5
August	5.9	5.8	1.3	1.1	(a)0.9	(a)0.4	0.3	0.9	16.7
Manufacturing—									
1982—									
August	1.5	*	*	0.2	*	*	—	—	3.7
1983—									
May	(a)0.6	(a)1.0	*	0.3	*	—	—	*	2.2
August	1.3	(a)1.1	*	(a)0.3	*	*	—	—	2.9
Other industries—									
1982—									
August	5.9	5.4	2.9	(a)0.8	(a)1.5	(a)0.3	0.4	0.6	17.8
1983—									
May	6.3	4.3	1.5	(a)0.8	*	(a)0.3	0.3	0.6	15.4
August	4.6	4.7	1.3	0.8	*	*	0.3	0.9	13.8
Private—									
1982—									
August	(a)4.7	(a)2.9	(a)1.7	*	*	*	*	*	11.0
1983—									
May	(a)3.9	(a)1.9	(a)0.7	(a)0.6	*	*	*	(a)0.3	8.1
August	(a)2.5	(a)2.5	(a)0.4	(a)0.6	*	*	*	*	6.9
Government—									
1982—									
August	2.7	4.0	1.5	0.5	(a)0.8	(a)0.3	0.3	0.5	10.5
1983—									
May	3.1	3.5	1.0	0.4	(a)0.5	0.2	0.3	0.6	9.5
August	3.4	3.3	1.0	0.4	*	*	0.2	0.8	9.9

(a) Standard error greater than 20 per cent but less than 30 per cent.