



# 2005 Labour Statistics In Brief Australia



## KEY FACTS

		Annual average	
	Units	1994	2004
<b>CIVILIAN POPULATION</b>			
Aged 15 years and over	'000	13 938.5	16 114.1
<b>LABOUR FORCE PARTICIPATION RATES</b>			
Males	%	73.6	71.6
Females	%	52.6	55.8
Persons	%	62.9	63.6
<b>EMPLOYMENT</b>			
Males	'000	4 553.4	5 363.1
Females	'000	3 388.4	4 314.0
Persons	'000	7 941.7	9 677.1
Employment/population ratio	%	57.0	60.1
Part-time employment:			
Proportion of total employment			
Males	%	10.8	14.8
Females	%	42.3	45.2
<b>UNEMPLOYMENT</b>			
Unemployed persons	'000	828.8	566.9
Unemployment rate			
Males	%	9.8	5.4
Females	%	9.0	5.7
Persons	%	9.4	5.5
Average duration of unemployment, persons	weeks	58.0	46.4

## HOURS OF WORK(a)

Employed persons	hours	34.7	33.5
Full-time	hours	40.9	40.4
Part-time	hours	15.2	16.0

(a) Based on actual hours collected in the reference week of each month.

## INDUSTRIAL RELATIONS

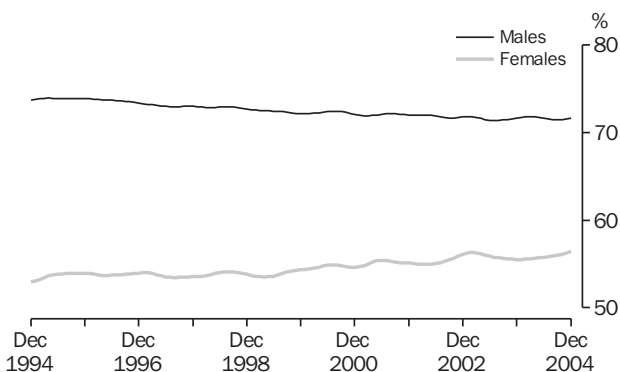
		Year ended December	
		1994	2004
Industrial disputes			
Working days lost per thousand employees	no.	75.3	45.5
Working days lost	'000	501.6	379.8
		<b>Aug 1994</b>	<b>Aug 2004</b>
Trade union members	%	35.0	22.7

## CHANGE IN WAGES AND PRICES

		12 months to Dec qtr 2004	10 years to Dec qtr 2004
Labour price index, total hourly rate of pay excluding bonuses	%	3.6	na
Consumer price index, all groups	%	2.6	29.9
		<b>Nov 1994</b>	<b>Nov 2004</b>
Average weekly earnings, full-time adults	\$	671.60	1 027.30

Source: Australian Labour Market Statistics (cat. no. 6105.0); Average Weekly Earnings, Australia (cat. no. 6302.0); Consumer Price Index, Australia (cat. no. 6401.0); Employee Earnings, Benefits and Trade Union Membership, Australia (cat. no. 6310.0); Industrial Disputes, Australia (cat. no. 6321.0.55.001); Labour Force, Australia, Detailed – Electronic Delivery (cat. no. 6291.0.55.001); Labour Price Index, Australia (cat. no. 6345.0).

## LABOUR FORCE PARTICIPATION RATES: Trend estimates



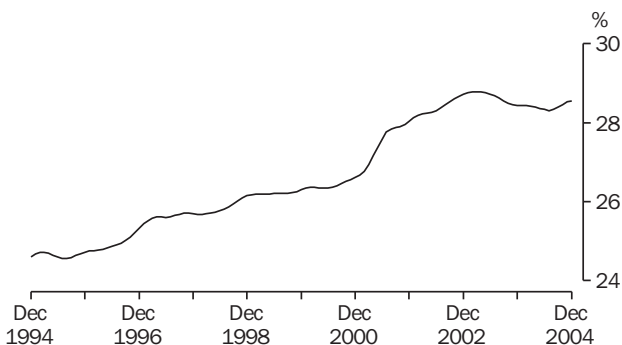
Source: Labour Force, Australia, Spreadsheets (cat. no. 6202.0.55.001).

## EMPLOYED PERSONS: OCCUPATION

	November 2004	
	'000	%
Managers and administrators	819.7	8.4
Professionals	1 822.5	18.6
Associate professionals	1 226.7	12.5
Tradespersons and related workers	1 244.9	12.7
Advanced clerical and service workers	358.2	3.7
Intermediate clerical, sales and service workers	1 636.0	16.7
Intermediate production and transport workers	837.8	8.6
Elementary clerical, sales and service workers	964.6	9.9
Labourers and related workers	875.9	8.9
<b>Total</b>	<b>9 786.5</b>	<b>100.0</b>

Source: Labour Force, Australia, Detailed – Electronic Delivery (cat. no. 6291.0.55.001).

## PART-TIME EMPLOYMENT AS A PROPORTION OF TOTAL EMPLOYMENT: Trend estimates



Source: Labour Force, Australia, Spreadsheets (cat. no. 6202.0.55.001).

## EMPLOYED PERSONS: STATUS IN EMPLOYMENT

	November 2004	
	'000	%
Employees	8 511.2	87.0
Own account workers	936.8	9.6
Employers	302.4	3.1
Contributing family workers	36.1	0.4
<b>Total</b>	<b>9 786.5</b>	<b>100.0</b>

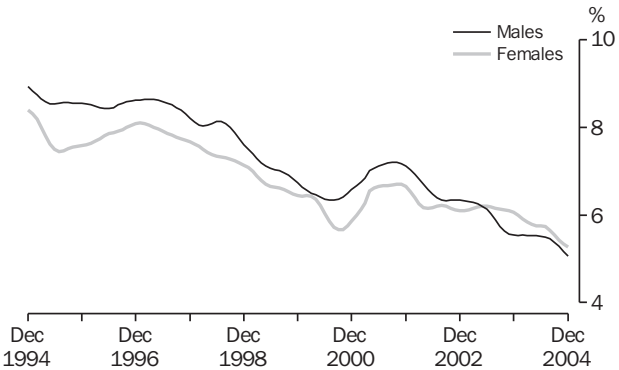
Source: Labour Force, Australia, Detailed – Electronic Delivery (cat. no. 6291.0.55.001).

## EMPLOYED PERSONS: INDUSTRY

	November 2004	
	'000	%
Agriculture, forestry and fishing	362.4	3.7
Mining	103.0	1.1
Manufacturing	1 082.6	11.1
Electricity, gas and water supply	75.2	0.8
Construction	840.4	8.6
Wholesale trade	454.0	4.6
Retail trade	1 487.5	15.2
Accommodation, cafes and restaurants	513.2	5.2
Transport and storage	452.8	4.6
Communication services	178.5	1.8
Finance and insurance	342.8	3.5
Property and business services	1 125.1	11.5
Government administration and defence	463.7	4.7
Education	684.0	7.0
Health and community services	988.0	10.1
Cultural and recreational services	257.4	2.6
Personal and other services	375.8	3.8
<b>Total</b>	<b>9 786.5</b>	<b>100.0</b>

Source: Labour Force, Australia, Detailed – Electronic Delivery (cat. no. 6291.0.55.001).

## UNEMPLOYMENT RATES: Trend estimates



Source: Labour Force, Australia, Spreadsheets (cat. no. 6202.0.55.001).

## LABOUR FORCE STATUS: PERSONS AGED 15–19 YEARS AND WHETHER ATTENDING FULL-TIME EDUCATION

	Units	Annual average 2004		Total
		Not attending full-time education	Attending full-time education	
Employed	'000	327.7	379.4	707.1
Full-time	'000	221.2	17.1	238.3
Part-time	'000	106.5	362.3	468.7
Unemployed	'000	60.7	72.1	132.8
Looking for full-time work	'000	53.8	10.4	64.2
Looking for part-time work	'000	7.0	61.7	68.6
Unemployment rate	%	15.6	16.0	15.8
Labour force participation rate	%	86.6	47.9	60.4
Unemployment to population ratio	%	13.5	7.6	9.5
Looking for full-time work	%	12.0	1.1	4.6

Source: *Labour Force, Australia, Detailed – Electronic delivery* (cat. no. 6291.0.55.001).

## UNEMPLOYED PERSONS: DURATION OF UNEMPLOYMENT

	November 2004	
	'000	%
Under 52 weeks		
Under 4 weeks	143.0	28.7
4 weeks and under 13 weeks	113.7	22.8
13 weeks and under 26 weeks	69.8	14.0
26 weeks and under 52 weeks	77.4	15.5
52 weeks and over (long-term unemployed)		
52 weeks and under 104 weeks	33.9	6.8
104 weeks and over	61.2	12.3
<b>Total</b>	<b>499.0</b>	<b>100.0</b>

Source: *Labour Force, Australia, Detailed – Electronic Delivery* (cat. no. 6291.0.55.001).

## LABOUR FORCE UNDERUTILISATION

	September 2004	
	'000	%
Underutilised labour force(a)	1 147.8	(b)11.1
Underemployed(c)	578.3	5.6
Unemployed	569.6	5.5
<b>Labour force</b>	<b>10 372.5</b>	<b>100.0</b>

(a) Underutilised labour force comprises the unemployed plus underemployed.

(b) Referred to as the labour force underutilisation rate.

(c) Underemployed workers are employed persons who want, and are available for, more hours of work than they currently have.

Source: *Australian Labour Market Statistics* (cat. no. 6105.0).

## LABOUR PRICE INDEX(a): OCCUPATION

	Annual % change to Dec qtr 2004
Managers and administrators	3.5
Professionals	3.9
Associate professionals	3.3
Tradespersons and related workers	3.7
Advanced clerical and service workers	3.4
Intermediate clerical, sales and service workers	3.4
Intermediate production and transport workers	3.9
Elementary clerical, sales and service workers	3.5
Labourers and related workers	3.9
<b>Total</b>	<b>3.6</b>

(a) Index: Total hourly rates of pay excluding bonuses.

Source: Labour Price Index, Australia (cat. no. 6345.0).

## AVERAGE WEEKLY TOTAL EARNINGS (\$)

	Nov 1994	Nov 2004	% change
Full-time adults			
Males	726.10	1 102.70	51.9
Females	574.70	890.40	54.9
Persons	671.60	1 027.30	53.0

Source: Average Weekly Earnings, Australia (cat. no. 6302.0).

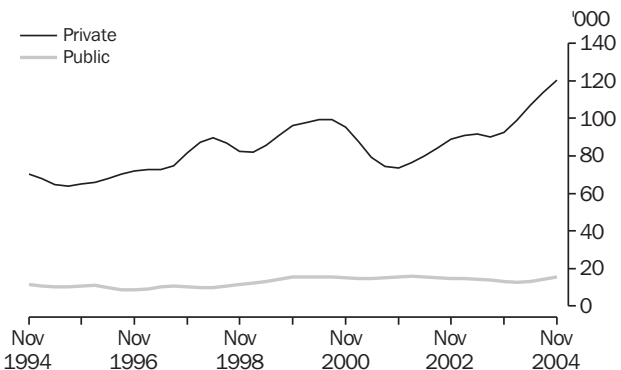
## METHODS OF SETTING PAY

	May 2004		
	Males %	Females %	Persons %
Award only	15.7	24.4	20.0
Collective agreements			
Registered	35.2	41.4	38.3
Unregistered	3.0	2.2	2.6
Individual arrangements			
Registered	3.0	1.9	2.4
Unregistered(a)	35.2	27.2	31.2
Working proprietor of incorporated business(a)	7.8	2.9	5.4
<b>Total</b>	<b>100.0</b>	<b>100.0</b>	<b>100.0</b>

(a) Prior to 2004, working proprietors of incorporated businesses were classified to unregistered individual arrangements.

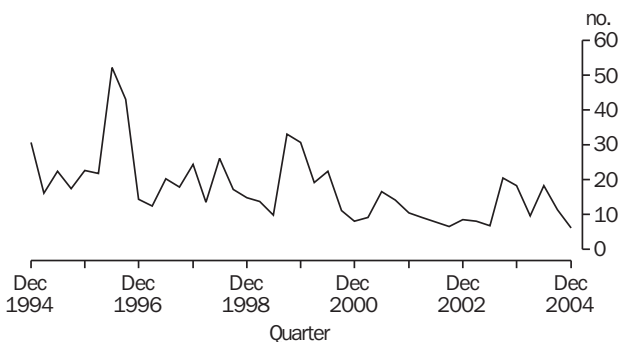
Source: Employee Earnings and Hours, Australia (cat. no. 6306.0).

## JOB VACANCIES BY SECTOR: Trend estimates



Source: Job Vacancies, Australia (cat. no. 6354.0).

## INDUSTRIAL DISPUTES, Working days lost per thousand employees



Source: *Industrial Disputes, Australia* (cat. no. 6321.0.55.001).

## INTERNATIONAL COMPARISONS: SELECTED CHARACTERISTICS

	Population 2003 (million)	Standardised unemployment rate(a) 2003 %
Australia	19.9	6.1
Canada	31.6	7.6
France	59.8	9.4
Germany	82.5	9.6
Japan	127.6	5.3
Sweden	9.0	5.6
United Kingdom	59.6	5.0
United States of America	291.0	6.0

(a) ILO/OECD definition.

Source: *OECD Quarterly Labour Force Statistics, Vol 2004/4*.

## SYMBOLS AND ABBREVIATIONS USED

Values shown in Australian dollars (\$). Where figures have been rounded, discrepancies may occur between the sums of the component items and totals.

<b>Aug</b> — August	<b>Nov</b> — November	<b>qtr</b> — quarter
<b>Dec</b> — December	<b>na</b> — not available	<b>%</b> — per cent
<b>no.</b> — number	<b>'000</b> — thousand	
<b>OECD</b> — Organisation for Economic Co-operation & Development		
<b>ILO</b> — International Labour Organisation		

## ACKNOWLEDGMENTS

ABS publications draw extensively on information provided freely by individuals, businesses, governments and other organisations. Their continued cooperation is very much appreciated; without it the wide range of statistics published by the ABS would not be available for general use by the community. Information received by the ABS is treated in strict confidence as required by the *Census and Statistics Act 1905*.

## FOR MORE INFORMATION...

### INTERNET

**www.abs.gov.au** The ABS web site is the best place to start for access to summary data from our latest publications, information about the ABS, advice about upcoming releases, our catalogue, and Australia Now — a statistical profile.

### LIBRARY

A range of ABS publications is available from public and tertiary libraries Australia-wide. Contact your nearest library to determine whether it has the ABS statistics you require, or visit our web site for a list of libraries.

### CPI INFOLINE

For current and historical Consumer Price Index data, call 1902 981 074 (call cost 77c per minute).

### DIAL-A-STATISTIC

For the latest figures for National Accounts, Balance of Payments, Labour Force, Average Weekly Earnings, Estimated Resident Population and the Consumer Price Index call 1900 986 400 (call cost 77c per minute).

## INFORMATION SERVICE

Data which have been published and can be provided within five minutes are free of charge. Our information consultants can also help you to access the full range of ABS information — ABS user-pays services can be tailored to your needs, time frame and budget. Publications may be purchased. Specialists are on hand to help you with analytical or methodological advice.

### PHONE

**1300 135 070**

### EMAIL

**client.services@abs.gov.au**

### FAX

1300 135 211

### POST

Client Services, ABS, GPO Box 796, Sydney 2001

## WHY NOT SUBSCRIBE?

ABS subscription services provide regular, convenient and prompt deliveries of ABS publications and products as they are released. Email delivery of monthly and quarterly publications is available.

### PHONE

1300 366 323

### EMAIL

subscriptions@abs.gov.au

### FAX

(03) 9615 7848

### POST

Subscription Services, ABS, GPO Box 2796Y, Melbourne 3001



2610400001057  
ISSN 1031-041X

© Commonwealth of Australia 2005

.....  
Produced by the Australian Bureau of Statistics