



2001 Labour Statistics In Brief Australia



KEY FACTS

		Annual average	
	Units	1990	2000
CIVILIAN POPULATION			
Aged 15 and over	million	13.2	15.2

LABOUR FORCE PARTICIPATION

Participation rates			
Males	%	75.6	72.6
Females	%	52.2	54.9
Persons	%	63.7	63.6

EMPLOYMENT

Males	'000	4 600.2	5 080.3
Females	'000	3 258.6	3 963.0
Persons	'000	7 858.8	9 043.3
Full-time	%	78.8	73.8
Part-time	%	21.2	26.2
Employment/population ratio	%	59.5	59.5

UNEMPLOYMENT

Unemployed persons	'000	584.8	638.3
Unemployment rate (Trend)			
Males	%	6.7	6.7
Females	%	7.2	6.4
Persons	%	6.9	6.6
Persons aged 15–19	%	18.6	21.4
Average duration of unemployment for August, persons	weeks	43.8	51.9

HOURS OF WORK

Average weekly hours worked by employed persons	hours	34.4	34.6
Full-time	hours	39.6	41.3
Part-time	hours	14.8	15.7

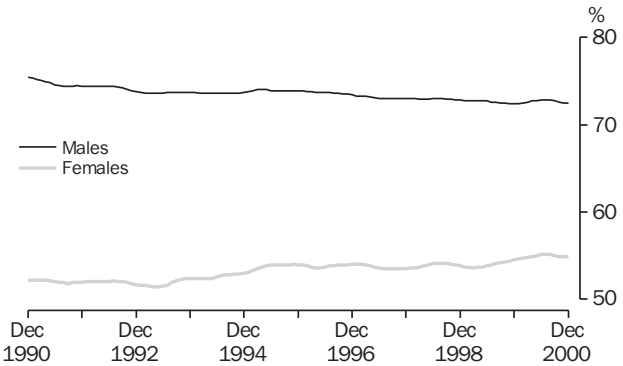
INDUSTRIAL RELATIONS

		12 months ended December	
		1990	2000
Industrial disputes			
Working days lost per thousand employees	no.	207.0	60.0
Working days lost	'000	1 376.5	465.3
		Aug 1990	Aug 2000
Trade union members	%	40.5	24.7

CHANGE IN WAGES AND PRICES

		12 months to Dec Qtr 2000	10 years to Dec Qtr 2000
Average weekly earnings, full-time adults	%	4.2	42.0
Wage Cost Index, total hourly rate of pay excluding bonuses	%	3.4	n.a.
Consumer Price Index, all groups	%	5.8	23.9

LABOUR FORCE PARTICIPATION RATES: Trend estimates



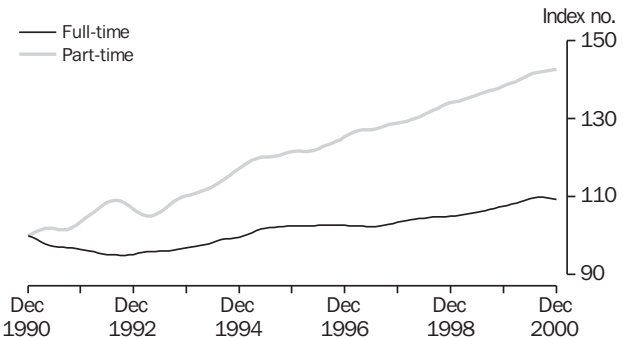
Source: Labour Force, Australia (6203.0).

EMPLOYED PERSONS: OCCUPATION

	Annual average 2000	
	'000	%
Managers and administrators	636.8	7.1
Professionals	1 631.7	18.1
Associate professionals	1 026.5	11.4
Tradespersons and related workers	1 198.0	13.3
Advanced clerical and service workers	400.3	4.4
Intermediate clerical, sales and service workers	1 561.8	17.3
Intermediate production and transport workers	786.7	8.7
Elementary clerical, sales and service workers	887.2	9.8
Labourers and related workers	880.5	9.8
Total	9 009.4	100.0

Source: Labour Force, Australia (6203.0).

FULL-TIME AND PART-TIME EMPLOYMENT INDEX: Trend estimates (December 1990=100)



Source: Labour Force, Australia (6203.0).

EMPLOYED PERSONS: STATUS IN EMPLOYMENT ('000)

	Annual average	
	1990	2000
Employees	6 651.3	7 750.3
Own account workers	744.8	858.2
Employers	375.9	328.8
Contributing family workers	64.5	72.0
Total	7 836.6	9 009.4

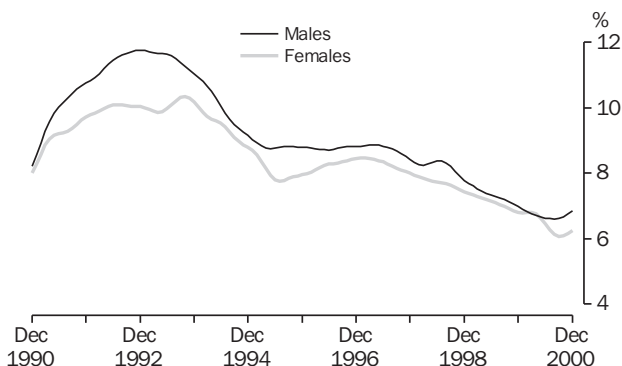
Source: Labour Force, Australia (6203.0).

EMPLOYED PERSONS: INDUSTRY

	Annual average 2000	
	'000	%
Agriculture, forestry and fishing	438.8	4.9
Mining	79.5	0.9
Manufacturing	1 141.1	12.7
Electricity, gas and water supply	64.8	0.7
Construction	700.7	7.8
Wholesale trade	453.7	5.0
Retail trade	1 325.7	14.7
Accommodation, cafes and restaurants	457.2	5.1
Transport and storage	412.8	4.6
Communication services	179.3	2.0
Finance and insurance	335.3	3.7
Property and business services	1 038.7	11.5
Government administration and defence	352.0	3.9
Education	612.3	6.8
Health and community services	849.3	9.4
Cultural and recreational services	224.3	2.5
Personal and other services	343.9	3.8
Total	9 009.4	100.0

Source: Labour Force, Australia (6203.0).

UNEMPLOYMENT RATES: Trend estimates



Source: Labour Force, Australia (6203.0).

UNEMPLOYED PERSONS: BY AGE AND WHETHER LOOKING FOR FULL-TIME OR PART-TIME WORK ('000)

	Looking for full-time work	Annual average 2000	
		Looking for part-time work	Total
Males			
15-19	37.7	35.1	72.7
20 and over	265.6	27.0	292.6
<i>Total</i>	303.3	62.0	365.4
Females			
15-19	27.2	36.6	63.8
20 and over	141.4	67.9	209.2
<i>Total</i>	168.6	104.4	273.0
Persons			
15-19	64.9	71.6	136.5
20 and over	407.0	94.8	501.8
Total	471.9	166.5	638.3

Source: Labour Force, Australia (6203.0).

UNEMPLOYED PERSONS: DURATION OF UNEMPLOYMENT ('000)

Duration of unemployment (weeks)	Annual average	
	1990	2000
Under 52	461.5	465.3
Less than 4	127.0	139.4
4 and under 13	158.1	154.3
13 and under 52	176.4	171.6
52 and over (long-term unemployed)	123.3	173.0
Total	584.8	638.3

Source: Labour Force, Australia (6203.0).

EDUCATIONAL ATTAINMENT OF PERSONS AGED 15 TO 64 WHO WERE EMPLOYED IN MAY 2000

	'000	%
With post-school qualifications	4 505.8	51.1
Without post-school qualifications(a)	4 089.8	46.3
Completed highest level of school	1 665.2	18.9
Did not complete highest level of school	2 421.0	27.4
Still attending school	228.8	2.6
Total	8 824.5	100.0

(a) Includes persons who never attended school.

Source: Transition from Education to Work, Australia (6227.0).

WAGE AND SALARY EARNERS: PRIVATE AND PUBLIC SECTORS

	August 2000	
	'000	%
Private(a)	5 891.2	80.0
Public		
Commonwealth	246.5	3.3
State	1 080.8	14.7
Local	141.1	1.9
Total	1 468.4	20.0
Total(a)	7 359.5	100.0

(a) Excludes private sector employees in Agriculture, forestry and fishing.
Source: *Wage and Salary Earners, Australia* (6248.0).

AVERAGE WEEKLY TOTAL EARNINGS (\$)

	Nov 1999	Nov 2000
Full-time adults		
Males	867.8	898.7
Females	698.8	734.0
Persons	805.0	838.9

Source: *Average Weekly Earnings, Australia* (6302.0).

LABOUR MOBILITY

	12 months ended February	
	1990 %	2000 %
Males		
Changed employer/business(a)	14.9	13.3
Changed locality (same employer/business)	3.7	3.2
Did not change	81.4	83.5
Total males	100.0	100.0
Females		
Changed employer/business(a)	15.0	12.2
Changed locality (same employer/business)	3.1	2.9
Did not change	82.0	84.9
Total females	100.0	100.0
Persons		
Changed employer/business(a)	14.9	12.8
Changed locality (same employer/business)	3.4	3.1
Did not change	81.6	84.2
Total	100.0	100.0

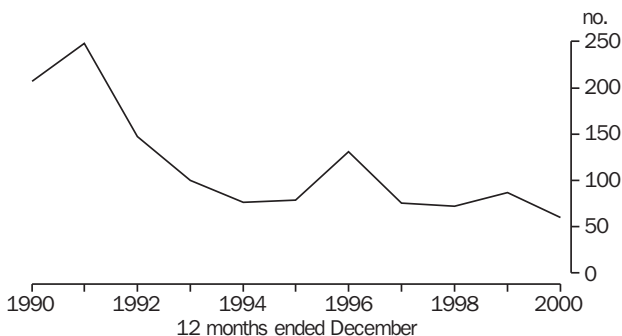
(a) Includes changed employer/business and locality.
Source: *Labour Mobility, Australia* (6209.0).

JOB VACANCIES: INDUSTRY ('000)

	Nov 1999	Nov 2000
Manufacturing	14.0	9.3
Wholesale trade; Retail trade	24.2	26.6
Accommodation, cafes and restaurants	9.3	12.4
Finance and insurance; Property and business services	22.4	31.9
Education; Health and community services	12.6	16.9
Other	20.7	21.1
Total	103.2	118.2

Source: *Job Vacancies, Australia* (6354.0).

INDUSTRIAL DISPUTES: WORKING DAYS LOST PER THOUSAND EMPLOYEES



Source: *Industrial Disputes, Australia* (6321.0).

INTERNATIONAL COMPARISONS: SELECTED CHARACTERISTICS

	Population 1999 (million)	Participation rate Annual average(a) 1999 %	Unemployment rate Standardised(a) 1999 %
Australia	19.0	63.2	7.2
Canada	30.6	65.6	7.6
France	59.1	(b)55.0	11.3
Germany	82.0	57.5	8.7
Japan	126.7	62.9	4.7
Sweden	8.9	77.2	7.2
United Kingdom	59.4	62.9	6.1
United States of America	272.5	67.1	4.2

(a) ILO/OECD definition.

(b) 1997.

Source: *1999 World Population Data Sheet; Yearbook of Labour Statistics 2000, International Labour Office, Geneva; Main Economic Indicators, October 2000, OECD Statistics.*

SYMBOLS AND ABBREVIATIONS USED

Values shown in Australian dollars (\$). Where figures have been rounded, discrepancies may occur between the sums of the component items and totals.

Qtr. — quarter	n.a. — not available	no. — number
Nov — November	% — per cent	'000 — thousand
Dec — December	\$ — dollars	= — equals
Aug — August		
OECD — Organisation for Economic Co-operation & Development		
ILO — International Labour Office		

ACKNOWLEDGMENTS

ABS publications draw extensively on information provided freely by individuals, businesses, governments and other organisations. Their continued cooperation is very much appreciated; without it the wide range of statistics published by the ABS would not be available for general use by the community. Information received by the ABS is treated in strict confidence as required by the *Census and Statistics Act 1905*.

FOR MORE INFORMATION...

- INTERNET** www.abs.gov.au The ABS web site is the best place to start for access to summary data from our latest publications, information about the ABS, advice about upcoming releases, our catalogue, and Australia Now — a statistical profile.
- LIBRARY** A range of ABS publications is available from public and tertiary libraries Australia-wide. Contact your nearest library to determine whether it has the ABS statistics you require, or visit our web site for a list of libraries.
- CPI INFOLINE** For current and historical Consumer Price Index data, call 1902 981 074 (call cost 77c per minute).
- DIAL-A-STATISTIC** For the latest figures for National Accounts, Balance of Payments, Labour Force, Average Weekly Earnings, Estimated Resident Population and the Consumer Price Index call 1900 986 400 (call cost 77c per minute).

INFORMATION SERVICE

Data which have been published and can be provided within five minutes are free of charge. Our information consultants can also help you to access the full range of ABS information — ABS user-pays services can be tailored to your needs, time frame and budget. Publications may be purchased. Specialists are on hand to help you with analytical or methodological advice.

- PHONE** **1300 135 070**
- EMAIL** client.services@abs.gov.au
- FAX** 1300 135 211
- POST** Client Services, ABS, GPO Box 796, Sydney 1041

WHY NOT SUBSCRIBE?

ABS subscription services provide regular, convenient and prompt deliveries of ABS publications and products as they are released. Email delivery of monthly and quarterly publications is available.

- PHONE** 1300 366 323
- EMAIL** subscriptions@abs.gov.au
- FAX** (03) 9615 7848
- POST** Subscription Services, ABS, GPO Box 2796Y, Melbourne 3001



2610400001019
ISSN 1031-041X

© Commonwealth of Australia 2001

RRP \$1.20

Produced by the Australian Bureau of Statistics