



COMMONWEALTH BUREAU OF CENSUS AND
CANBERRA, AUSTRALIA.

LABOUR REPORT, 1947.

No. 36.

Prepared under Instructions from
THE RIGHT HONORABLE THE TREASURER,

by

S. R. CARVER,
Acting Commonwealth Statistician.

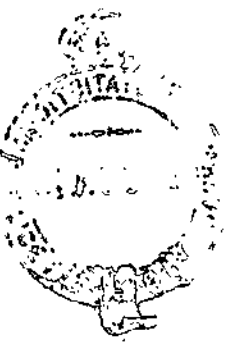
DECEMBER, 1948.

By Authority :

L. F. JOHNSON, Commonwealth Government Printer, Canberra.

(Wholly set up and printed in Australia.)

[C.S. No. 774.]—3970.



11 12 13 14 15 16 17 18 19 20 21 22 23 24 25 26 27 28 29 30 31 32 33 34 35 36 37 38 39 40 41 42 43 44 45 46 47 48 49 50 51 52 53 54 55 56 57 58 59 60 61 62 63 64 65 66 67 68 69 70 71 72 73 74 75 76 77 78 79 80 81 82 83 84 85 86 87 88 89 90 91 92 93 94 95 96 97 98 99 100

PREFACE.

The first Labour Report issued by this Bureau was published in 1912. This Report is the thirty-sixth of the series and deals chiefly with 1947, in addition to giving comparisons for previous years. Some of the tabulations, however, include particulars relating to 1948.

The Report follows the lines of its immediate predecessors in scope and arrangement. The subject-matter has been divided into five Chapters, viz., Retail Prices and Price Indexes; Wholesale Prices and Price Indexes; Wages (including Hours of Labour); Employment and Unemployment (including Industrial Disputes), and Associations (Labour Organizations). The index at the end of the volume will considerably facilitate reference.

In tabulating the results of investigations as to rates of wage, labour organizations, unemployment, industrial disputes, &c., the following grouping has been adopted in this Report:—

Groups of Industries and Occupations.

I.	Wood, Furniture, Sawmill, Timberworks, &c.	VIII.	Mining, Quarries, &c.
II.	Engineering, Metal Works, &c.	IX.	Railway and Tramway Services.
III.	Food, Drink, and Tobacco—Manufacture and Distribution.	X.	Other Land Transport.
IV.	Clothing, Textiles, &c.	XI.	Shipping, Wharf Labour, &c.
V.	Books, Printing, Bookbinding, &c.	XII.	Pastoral, Agricultural, Rural, Horticultural, &c.
VI.	Other Manufacturing.	XIII.	Domestic, Hotels, &c.
VII.	Building.	XIV.	Miscellaneous.

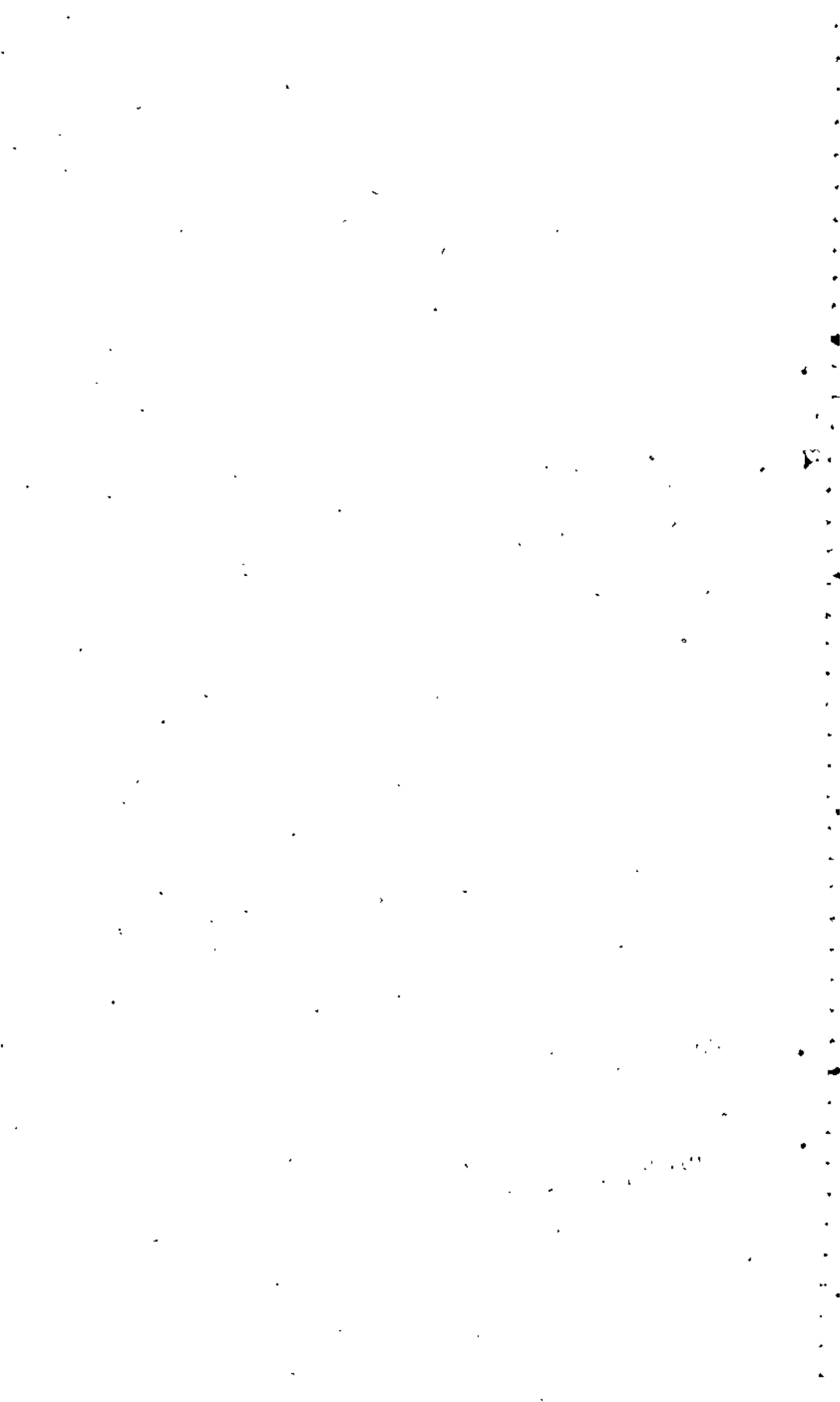
Secretaries of trade unions and of employers' associations, officials of Commonwealth and State Departments, private employers, retail traders, house agents, and others have readily supplied much information specially for the purposes of this Report, and my thanks are tendered to all who have thus assisted.

Grateful acknowledgment is also made of the continued assistance given by the Statistical Offices in the various States, especially in regard to the collection of retail prices.

I also desire to express my appreciation of the work done in the preparation of this Report by Mr. V. Fahey, the Officer-in-Charge of the Prices Section, Mr. E. H. Harry, B.A., B.Com., the Officer-in-Charge of the Employment and Labour Section, and the staff under their control.

S. R. CARVER,
Acting Commonwealth Statistician.

Commonwealth Bureau of Census and Statistics,
Canberra, A.C.T., December, 1948.



SYNOPSIS.

CHAPTER I.—RETAIL PRICES AND PRICE INDEXES.

	Page.
§ 1. Collection of Information as to Retail Prices	1
§ 2. Retail Price Indexes—	
1. General	2
2. Essential Features	3
3. The Regimen	3
4. Purpose of Retail Price Indexes	3
5. Effects of War Conditions on Indexes	3
§ 3. Various Retail Price Indexes	4
§ 4. Retail Price Levels, ("C" Series Index) 1914-1947—	
1. Significant Dates	5
2. The All Items ("C" Series) Retail Price Index— Six Capital Cities, 1914-1947	6
§ 5. Increases in Retail Prices since Outbreak of War in 1939—	
1. Australia	7
2. International Comparisons	8
§ 6. Construction of All Items ("C" Series) Retail Price Index—	
1. The Regimen	10
2. The Mass Units (or Weights) and Method of Tabulation	13
3. Relative Aggregate Expenditure of Items and Groups	15
4. Base Periods of the Indexes	16
5. Relative Population Weights for Towns	17
§ 7. Tabular Statements of Retail Price Index-Numbers—	
1. General	18
2. All Items ("C" Series) Retail Price Index	18
Six Capital Cities, December Quarters, 1939 to 1947	19
Six Capital Cities, November, 1914, to November, 1920	20
Thirty Towns 1914, and 1921 to 1947	21
Additional Towns, 1936 to 1947	24
"Group" Index-Numbers of "C" Series, Thirty Towns—1914 and 1921 to 1947 (Food and Groceries, Housing, Clothing, Miscellaneous)	25
3. "R" Series Retail Price Index: Food, Groceries and Rent	28
Six Capital Cities, 1907 to 1947	28
Groceries—Section A	28
Dairy Produce—Section B	28
Meat—Section C	28
Food and Groceries—Sections A, B and C	28
Housing (4 and 5 Rooms)—Section D	28
Food, Groceries and Housing—All Sections	28
Thirty Towns, 1914, 1921 and 1939 to 1947—Groups and Total	29
§ 8. Retail Price Index-Numbers, 200 Towns	32
§ 9. Changes in the Regimen--	
1. General	32
2. Revision of 1936	33
3. Method of Efforting Changes	34
4. Continuity of Indexes	34
5. The Regimen under War Conditions	35
§ 10. Retail Price Indexes and Wage Variations—	
(i) "A" Series Index	37
(ii) "B" Series Index	37
(iii) "C" Series Index	37
(iv) "Court" Index	38
(v) "D" Series Index	38
(vi) Food and Groceries	39
(vii) The "200 Towns" Series	39
§ 11. Scales Used for Automatic Wage Adjustment	39
§ 12. International Comparisons—Retail Price Index-Numbers	41

CHAPTER II.—WHOLESALE PRICES AND PRICE INDEXES.

§ 1. Melbourne Wholesale Price Index—	Page.
1. General	43
2. Grouping of the Commodities and Commodities included	43
3. Index-numbers—	
(i) 1861 to 1947 (1911 Base)	45
(ii) 1915 to 1947 (July, 1914 Base)	46
§ 2. Basic Materials and Foodstuffs—	
1. General	46
2. Index-numbers, 1928 to 1947	47
§ 3. International Comparisons—Index Numbers, 1937 to 1947	49

CHAPTER III.—WAGES.

§ 1. Operations under Arbitration and Wages Board Acts and Industrial Legislation—	
1. General	50
2. Laws Regulating Industrial Matters	50
3. Methods of Administration	50
4. Awards and Determinations made and Industrial Agreements filed	53
5. Awards, Determinations and Agreements in Force	53
6. New Legislation and Special Reports	54
7. Control of Wages During and Since the War	56
§ 2. Rates of Wage and Hours of Labour—	
1. General	56
2. Adult Male Weekly Wages—States, 1914 to 1947	58
3. Adult Male Weekly Wages—Australia—Industrial Groups, 1914 to 1947	58
4. Adult Female Weekly Wages—States, 1914 to 1947	60
5. Adult Female Weekly Wages—Australia—Industrial Groups, 1914 to 1947	61
6. Hours of Labour and Hourly Rates of Wage, 31st December, 1947—	
(i) General	61
(ii) Adult Males	62
(iii) Adult Females	63
7. Adult Male Weekly Wages—States, 1891 to 1947	64
8. Adult Male Weekly Wages—Australia—Industrial Groups, 1891 to 1947	64
9. Adult Male Hourly Wages—States, 1914 to 1947	65
10. Adult Female Hourly Wages—States, 1914 to 1947	66
11. Nominal Hours of Labour—Adult Males, 1914 to 1947	67
12. Nominal Hours of Labour—Adult Females, 1914 to 1947	68
13. Nominal and Effective Wages, 1901 to 1947	69
14. Productive Activity, 1906 to 1946-47	72
§ 3. The Basic Wage and Child Endowment in Australia—	
1. The Basic Wage—	
(i) General	73
(ii) Acts in Force	73
2. The Commonwealth Basic Wage—	
(i) General	73
(ii) Basic Wage Inquiry, 1934	76
(iii) Basic Wage Inquiry, 1937	77
(iv) "Lag" in Adjustments	78
(v) Basic Wage Inquiry, 1940	78
(vi) "Interim" Basic Wage, 1946	79
(vii) Rates Operative, Principal Towns, 1948	81
(viii) Rates Operative, Six Capital Cities, 1939-1948	82
3. Basic Wage Rates for Females	83
4. Australian Territories	90
5. State Basic Wages	94
6. Royal Commission on Basic Wage, 1920	101
7. Child Endowment	103

CHAPTER IV.—EMPLOYMENT AND UNEMPLOYMENT.

§	1. Employment—	Page.
	1. General	105
	2. Total Occupied Persons—Australia, 1933 to 1947	106
	3. Wage and Salary Earners in Employment—	
	(i) Australia, Industrial Groups, 1933 to 1948	110
	(ii) States, 1933 to 1948	112
	(iii) Factories, by Main Classes, 1939 to 1948	113
§	2. Unemployment—	
	1. Total Persons Unemployed	114
	2. Unemployment in Trade Unions—	
	(i) General	116
	(ii) Australia, 1891 to June Quarter, 1948	116
	(iii) Australia, by Industries, 1947	117
	(iv) Australia, by Industries, September Quarter, 1939 and Quarterly, 1946 and 1947	118
	(v) States, 1947	118
	(vi) States, 1931 to 1947, and Quarterly, 1944 to June, 1948	118
	(vii) Causes of Unemployment	119
	3. Unemployment, Various Countries	119
§	3. Commonwealth Employment Service	120
§	4. State Labour Exchanges	121
§	5. Commonwealth Unemployment and Sickness Benefits	121
§	6. Relief of Unemployment	123
§	7. Industrial Disputes—	
	1. General	124
	2. Industrial Disputes in Industrial Groups, 1947	124
	3. Industrial Disputes, 1939, 1943 to 1947	127
	4. Duration of Industrial Disputes	128
	5. Causes of Industrial Disputes	130
	6. Results of Industrial Disputes	131
	7. Methods of Settlement	133
§	8. Industrial Accidents—	
	1. Source of Information	135
	2. Number of Accidents Reported, 1939, 1942 to 1946	136
	3. Accidents in Industrial Groups, 1939, 1945 and 1946	136
	4. Mining Accidents, 1945 and 1946	137

CHAPTER V.—ASSOCIATIONS.

§	1. Labour Organizations—	
	1. General	138
	2. Trade Unions and Branches—Number and Membership, 1939, 1944 to 1947	139
	3. Trade Unions—Industrial Groups, 1939, 1944 to 1947	140
	4. Trade Unions—Number of Male and Female Members and Percentage of Total Wage and Salary Earners (i) States, 1947; (ii) Australia, 1939, 1944 to 1947	140
	5. Trade Unions—Classification according to Number of Members, 1939, 1944 to 1947	142
	6. Interstate or Federated Trade Unions, 1939, 1944 to 1947	143
	7. Central Labour Organizations, 1939, 1944 to 1947	143
	8. Organizations Registered under Commonwealth Conciliation and Arbitration Act	144
§	2. International Labour Conferences	145
§	3. World Federation of Trade Unions	146

APPENDIX.		Page
Section	I. Average Retail Prices of Chief Food and Groceries Items, each Capital City, monthly 1947 ..	147
"	II. Weekly House Rents in Metropolitan and Provincial Towns, 1939, 1943 to 1947 ..	153
"	III. Average Retail Prices of Food in Principal Cities; Australia and Other Countries, 1947 ..	154
"	IV. Retail Price Index-numbers—"Court" Series, 1939 to 1947 ..	157
"	V. Minimum Rates of Wage and Hours of Labour for Adult Male Workers, 31st December, 1947 ..	158
"	VI. Minimum Rates of Wage and Hours of Labour for Adult Female Workers, 31st December, 1947 ..	172
	VII. Weekly Rates of Wage and Hours of Labour—Australia and Other Countries ..	175
	VIII. Comparative Index-numbers (1911 Base), Six Capital Cities, 1911 to 1948 (June)—Retail Prices, Wages and Unemployment ..	178

INDEX	179
--------------	-----

GRAPHS.

1. Retail Prices, Wholesale Prices and Nominal and Effective Wage Index-Numbers, 1911 to 1947 ..	48
2. Industrial Disputes—Working Days Lost in Industrial Groups, 1929 to 1947 ..	126