

Reference No. 13.5

## SCHOOLS, 1974

### CONTENTS

<i>Table</i>	<i>Page</i>
.. Main features	2
.. Explanatory notes	2
.. Grades in Government Schools : States, 1974	4
<b>SECTION I – GENERAL</b>	
1. Schools, teachers, and students : Australia, 1974	5
2. Students aged 15 years and over as a percentage of the population of the same age and sex : Australia, 1970 to 1973	5
3. Masculinity ratio of students aged 15 years and over in government and non-government schools : Australia, 1970 to 1974	5
<b>SECTION II – SCHOOLS</b>	
4. Schools, by category of school : States and Territories, 1974	6
5. Schools, by size of primary and secondary enrolments : Australia, 1974	6
6. Schools, by category of school : States and Territories, 1970 to 1974	7
<b>SECTION III – TEACHERS</b>	
7. Full-time and part-time teachers, by level of teaching and sex : States and Territories, 1974 – (i) Government schools	8
(ii) Non-government schools	9
(iii) All schools	10
8. Full-time and part-time teachers, by category of school : States and Territories, 1974	11
9. Full-time and part-time teachers, government and non-government schools : States and Territories, 1970 to 1974	12
10. Teachers, by category of school : States and Territories, 1970 to 1974	13
<b>SECTION IV – STUDENTS</b>	
11. Students, by category of school and sex : States and Territories, 1974	14
12. Students, by category of school : States and Territories, 1970 to 1974	15
13. Grades of students, by category of school : States and Territories, 1974 – (i) Number of students	16
(ii) Total students in primary, secondary, and unclassifiable grades	18
14. Ages of students, by category of school and sex : Australia, 1974	19
15. Ages of students, by sex : States and Territories, 1974 – (i) Government schools	20
(ii) Non-government schools	21
(iii) All schools	22
16. Ages of students, by sex, government and non-government schools : Australia, 1972 to 1974	23

### MAIN FEATURES

- In 1974, there were 2,876,326 students enrolled in Australian schools, an increase of 22,915 (0.8 per cent) over 1973.
- The number of schools in Australia continued to fall with 9,452 schools in 1974, or 35 fewer than in 1973.
- The number of full-time teachers increased from 1973 to 1974 by 5,814 (4.4 per cent) from 129,659 to 135,473 (56,486 males, an increase of 4.3 per cent, and 78,987 females, 4.6 per cent increase). Full-time equivalents of part-time teaching increased by 433 to 6,896 after a fall of 308 in the previous year.

### EXPLANATORY NOTES

#### Introduction

This bulletin contains detailed statistics of schools, teachers and students in Australia for 1974. Additional information can be found in publications of the Deputy Commonwealth Statistician in each State, various publications of the Department of Education, and in the annual reports of the State education departments.

2. The statistics reported are not comparable between States nor entirely comparable between government and non-government schools in any one State because of differences in :
- (a) school systems, especially type of school;
  - (b) the grading of students and their advancement;
  - (c) the examination systems;
  - (d) the transfer from secondary to vocational education; and
  - (e) the recruitment and employment of teachers.

#### Scope and Definitions

3. **Schools** are classified as government or non-government and may provide primary, secondary, or both primary and secondary education. They include junior technical schools; correspondence schools (included in government ordinary schools); schools in institutions and hospitals; mission schools and similar establishments. They exclude pre-schools and kindergartens not incorporated in ordinary schools, senior technical and agricultural colleges, evening schools, continuation classes, institutions such as business colleges, and coaching colleges. **Special Schools** are those specifically intended for the instruction of students who are physically or mentally handicapped, or socially maladjusted. Special schools also include schools

specifically set up for the education of Aboriginal children requiring other than ordinary schooling.

4. **Teacher statistics** include teaching staff, principals and head teachers, whether permanent or temporary, but exclude teachers-in-training, teachers on leave without pay, and other teachers engaged wholly in advisory, administrative or other non-teaching duties. Variations occur from State to State in :

- (a) the treatment of special purpose and casual teachers;
- (b) the classification of teachers who, in addition to primary or secondary teaching, are also engaged on other duties.

5. All teaching staff are classified as either full-time or part-time. Part-time teachers (including visiting teachers) teaching at two or more schools are shown as part-time at each school. Part-time staff have also been expressed in units of full-time equivalents. The methods used for calculating equivalent full-time units of part-time teaching vary from State to State and even between schools within States. Most schools base their calculations on hours worked, number of class periods, or proportion of full-time salary.

6. In Victoria, a teacher may teach both senior and junior technical students. For the purposes of this bulletin (which includes junior technical but not senior technical schools) such a teacher is counted as part-time if his teaching load in the junior school is less than 75 per cent of a full-time teaching load.

7. **Students.** Student statistics refer to the number of students enrolled at the schools included in this collection at the August schools census date. Students in pre-schools incorporated in ordinary schools are included except in Queensland where they have been excluded for 1973 and 1974 as they are now included in the Queensland pre-school collection. Students enrolled at government correspondence schools in courses designed for adults or employed persons are excluded from all student tables in this bulletin. For 1974 the numbers involved were : 2,094 (920 males and 1,174 females) in Queensland and 11 (4 males and 7 females) in Tasmania.

8. Methods of allocating classes to grades, particularly classes for students in special categories vary from State to State : students at special schools may follow the normal curriculum and students at ordinary schools may be in special classes and follow special curricula. In addition there are differences in the organisation of special Aboriginal education in the various States and the Northern Territory.

9. In New South Wales in 1974 there were fourteen special schools, each of which was partly staffed by State education departmental teachers,

thereby forming distinct units (government and non-government) within each school. For statistical purposes each unit (including teachers and students) has been treated as a separate school.

10. A number of schools (other than special schools), are no longer maintaining a formal grade structure. These schools allocate students to 'groups' for each subject according to their ability in that subject. States either allocate these 'groups' to grades or show

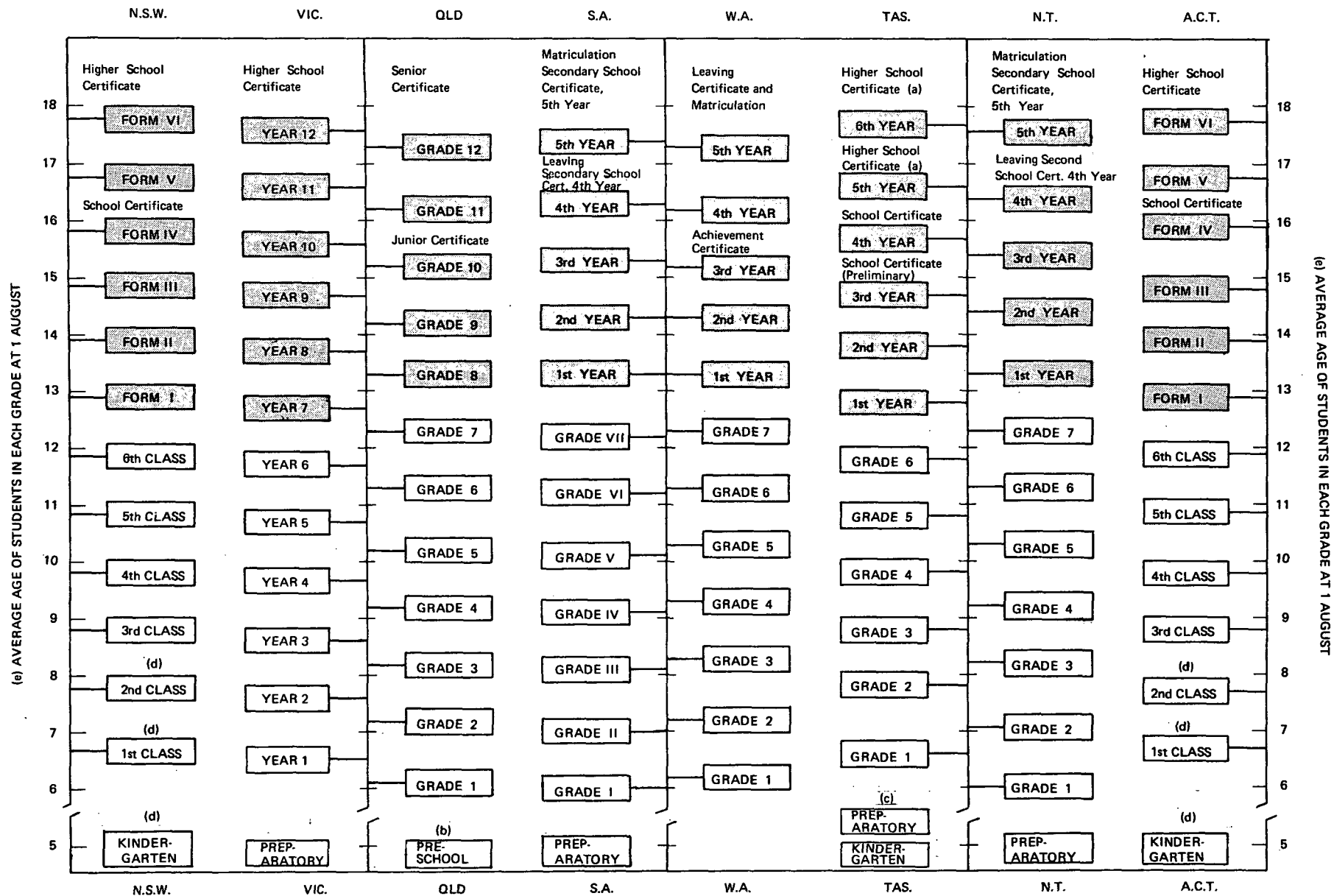
them as 'Ungraded non-special'.

Symbols and abbreviations used in the bulletin are :

. . nil or less than half the final digit shown  
n.a. not available

**NOTE** Any discrepancies between totals and sums of components in tables are due to rounding.

GRADES IN GOVERNMENT SCHOOLS, STATES 1974



The above diagram shows the usual grades in government primary and secondary schools in each State and Territory. Approximate average ages (at 1 August 1973) for each grade in each State and Territory are given in order to indicate differences in age-grade patterns. The diagram should not be taken as a comparison of academic standards of grades between States. For a more detailed presentation of the systems operating in each State, reference should be made to diagrams, etc. appearing in the annual reports of State Education Departments.

In all States and Territories, the non-government school sector has an average age-grade pattern which is very similar to that for government schools. It should be noted that in some States and Territories there is a trend in both government and non-government schools not to allocate pupils into a grade structure.

- Further explanatory notes :
- (a) In Tasmania most pupils study for the Higher School Certificate over a two year period.
  - (b) In Queensland all pre-school children were excluded from the School Census.
  - (c) In Tasmania, many children attend two years kindergarten grade.
  - (d) In N.S.W. and A.C.T., kindergarten, 1st class and 2nd class are termed "infants" grades.
  - (e) For age distribution within grades refer to age-grade tables which are available on request from the Bureau.

Primary Grades

Secondary Grades

(e) AVERAGE AGE OF STUDENTS IN EACH GRADE AT 1 AUGUST

## SECTION I - GENERAL

TABLE 1. - SCHOOLS, TEACHERS, AND STUDENTS : AUSTRALIA, 1974

Category of school	Teachers					Students		
	Schools	Full-time	Part-time		Total (b)	Males	Females	Persons
			No.	Equiv. (a)				
<b>GOVERNMENT SCHOOLS</b>								
Ordinary	6,960	107,290	8,632	4,544	111,834	1,159,261	1,077,060	2,236,321
Special	335	2,473	119	53	2,526	12,734	8,790	21,524
<b>Total</b>	<b>7,295</b>	<b>109,763</b>	<b>8,751</b>	<b>4,597</b>	<b>114,360</b>	<b>1,171,995</b>	<b>1,085,850</b>	<b>2,257,845</b>
<b>NON-GOVERNMENT SCHOOLS</b>								
Denominational -								
Church of England	102	2,982	706	336	3,318	27,988	22,583	50,571
Methodist	19	753	158	73	826	5,796	6,710	12,506
Presbyterian	30	1,180	226	98	1,278	10,138	9,058	19,196
Roman Catholic	1,731	18,336	4,333	1,535	19,871	243,924	250,131	494,055
Other	121	1,088	287	107	1,195	10,144	10,671	20,815
Undenominational	154	1,371	364	155	1,526	9,423	11,915	21,338
Ordinary	2,053	25,242	5,957	2,267	27,509	305,100	308,874	613,974
Special	104	468	117	32	500	2,313	2,194	4,507
<b>Total</b>	<b>2,157</b>	<b>25,710</b>	<b>6,074</b>	<b>2,300</b>	<b>28,010</b>	<b>307,413</b>	<b>311,068</b>	<b>618,481</b>
<b>ALL SCHOOLS</b>								
Ordinary	9,013	132,532	14,589	6,811	139,343	1,464,361	1,385,934	2,850,295
Special	439	2,941	236	85	3,026	15,047	10,984	26,031
<b>Total</b>	<b>9,452</b>	<b>135,473</b>	<b>14,825</b>	<b>6,897</b>	<b>142,370</b>	<b>1,479,408</b>	<b>1,396,918</b>	<b>2,876,326</b>

(a) Equivalent full-time units. (b) Number of full-time teachers plus equivalent full-time units.

TABLE 2. - STUDENTS AGED 15 YEARS AND OVER AS A PERCENTAGE OF THE POPULATION OF THE SAME AGE AND SEX (a) : AUSTRALIA, 1970 TO 1973  
(Per cent)

Age (years)	1970	1971	1972	1973	1974
<b>Males -</b>					
15	83.4	83.2	83.7	83.4	} n.a. (c)
16	55.5	57.7	57.8	56.5	
17	32.1	32.8	34.0	32.3	
18 and over (b)	12.1	11.8	12.4	11.4	
<b>Females -</b>					
15	78.9	79.8	81.0	81.1	
16	47.6	49.5	50.9	52.2	
17	23.8	24.8	26.5	27.6	
18 and over (b)	5.9	5.8	6.3	6.4	
<b>Persons -</b>					
15	81.2	81.5	82.4	82.3	
16	51.6	53.7	54.5	54.4	
17	28.0	28.8	30.3	30.0	
18 and over (b)	9.0	8.9	9.4	8.9	

(a) With the exception of 1971, which is based on the June 1971 Census, all the other years are based on population estimates at 30 June.  
(b) Students aged 18 years and over are shown as percentages of the 18 years age group. (c) Population estimates by age are not yet available.TABLE 3. - MASCULINITY RATIO OF STUDENTS AGED 15 YEARS AND OVER IN GOVERNMENT AND NON-GOVERNMENT SCHOOLS : AUSTRALIA, 1970 TO 1974  
(Males per 100 females)

Age (years)	1970	1971	1972	1973	1974
<b>Government schools -</b>					
15	115.0	116.3	113.5	111.9	109.2
16	128.3	127.1	126.6	118.1	114.8
17	146.9	143.4	136.5	126.9	117.0
18 and over	218.9	215.8	209.8	184.8	171.3
<b>Non-government schools -</b>					
15	94.3	95.3	95.9	96.0	94.1
16	103.4	104.9	105.6	104.9	103.5
17	126.4	124.4	125.1	119.3	116.9
18 and over	219.3	200.6	183.4	179.7	175.8
<b>All schools -</b>					
15	109.5	110.8	109.0	107.8	105.4
16	120.8	120.5	120.6	114.4	111.6
17	139.9	137.1	132.8	124.5	117.0
18 and over	219.0	211.4	202.0	183.4	172.6

## SECTION II – SCHOOLS

TABLE 4. – SCHOOLS, BY CATEGORY OF SCHOOL, 1974

Category of school	N.S.W.	Vic.	Qld	S.A.	W.A.	Tas.	N.T.	A.C.T.	Australia
GOVERNMENT SCHOOLS									
Ordinary	2,168	2,121	1,171	579	596	227	38	60	6,960
Special (a)	(b)103	40	54	34	25	18	56	5	335
<b>Total</b>	<b>2,271</b>	<b>2,161</b>	<b>1,225</b>	<b>613</b>	<b>621</b>	<b>245</b>	<b>94</b>	<b>65</b>	<b>7,295</b>
NON-GOVERNMENT SCHOOLS									
Ordinary	724	565	334	153	192	55	7	23	2,053
Special	80	6	3	4	..	1	10	..	104
<b>Total</b>	<b>804</b>	<b>571</b>	<b>337</b>	<b>157</b>	<b>192</b>	<b>56</b>	<b>17</b>	<b>23</b>	<b>2,157</b>
ALL SCHOOLS									
Ordinary	2,892	2,686	1,505	732	788	282	45	83	9,013
Special	183	46	57	38	25	19	66	5	439
<b>Total</b>	<b>3,075</b>	<b>2,732</b>	<b>1,562</b>	<b>770</b>	<b>813</b>	<b>301</b>	<b>111</b>	<b>88</b>	<b>9,452</b>

(a) Includes schools specifically set up for the education of Aboriginal children requiring other than ordinary schooling, as follows : Queensland 13, South Australia 11, and Northern Territory 54. (b) Includes 14 schools which are staffed by government and non-government teachers, see explanatory notes, paragraph 9, page 2.

TABLE 5. – SCHOOLS, BY SIZE OF PRIMARY AND SECONDARY ENROLMENTS : AUSTRALIA, 1974

Secondary	1	21	36	101	201	301	401	601	801	1,001	over	Total	
Primary	Nil	to 20	to 35	to 100	to 200	to 300	to 400	to 600	to 800	to 1,000	to 2,000	2,000	
GOVERNMENT SCHOOLS													
Nil	..	4	..	7	30	60	84	174	223	220	235	1	1,038
1 to 20	942	51	1	4	..	..	..	..	..	..	..	..	998
21 to 35	715	22	1	1	..	..	..	..	..	..	..	..	739
36 to 100	1,206	57	11	25	..	..	..	..	..	..	..	..	1,299
101 to 200	542	18	18	94	41	3	..	..	..	..	..	..	716
201 to 300	433	2	4	18	54	10	..	1	..	..	..	..	522
301 to 400	443	..	1	3	17	6	1	..	..	..	..	..	471
401 to 600	807	..	..	4	9	2	1	..	..	..	..	..	823
601 to 800	442	..	..	..	1	..	..	..	1	..	..	..	444
801 to 1,000	177	..	..	..	..	..	..	..	..	..	..	..	177
1,001 to 2,000	66	..	..	..	..	..	..	..	..	..	..	..	66
over 2,000	2	..	..	..	..	..	..	..	..	..	..	..	2
<b>Total</b>	<b>5,775</b>	<b>154</b>	<b>36</b>	<b>156</b>	<b>152</b>	<b>81</b>	<b>86</b>	<b>175</b>	<b>224</b>	<b>220</b>	<b>235</b>	<b>1</b>	<b>7,295</b>
NON-GOVERNMENT SCHOOLS													
Nil	..	3	9	17	69	54	56	76	35	15	4	..	338
1 to 20	69	3	1	2	6	3	..	..	..	..	..	..	84
21 to 35	48	8	1	5	3	4	4	1	..	..	..	..	74
36 to 100	322	9	3	10	13	12	11	8	3	..	1	..	392
101 to 200	359	6	6	20	25	26	22	34	11	3	2	..	514
201 to 300	299	1	4	6	13	8	16	24	19	6	1	..	397
301 to 400	156	..	..	2	7	3	..	6	5	6	3	..	188
401 to 600	120	..	..	1	..	..	1	5	1	2	..	..	130
601 to 800	34	..	..	..	..	..	..	..	..	..	..	..	34
801 to 1,000	4	..	..	..	..	..	..	..	..	..	1	..	5
1,001 to 2,000	1	..	..	..	..	..	..	..	..	..	..	..	1
<b>Total</b>	<b>1,412</b>	<b>30</b>	<b>24</b>	<b>63</b>	<b>136</b>	<b>110</b>	<b>110</b>	<b>154</b>	<b>74</b>	<b>32</b>	<b>12</b>	<b>..</b>	<b>2,157</b>
ALL SCHOOLS													
Nil	..	7	9	24	99	114	140	250	258	235	239	1	1,376
1 to 20	1,011	54	2	6	6	3	..	..	..	..	..	..	1,082
21 to 35	763	30	2	6	3	4	4	1	..	..	..	..	813
36 to 100	1,528	66	14	35	13	12	11	8	3	..	1	..	1,691
101 to 200	901	24	24	114	66	29	22	34	11	3	2	..	1,230
201 to 300	732	3	8	24	67	18	16	25	19	6	1	..	919
301 to 400	599	..	1	5	24	9	1	6	5	6	3	..	659
401 to 600	927	..	..	5	9	2	2	5	1	2	..	..	953
601 to 800	476	..	..	..	1	..	..	..	1	..	..	..	478
801 to 1,000	181	..	..	..	..	..	..	..	..	..	1	..	182
1,001 to 2,000	67	..	..	..	..	..	..	..	..	..	..	..	67
over 2,000	2	..	..	..	..	..	..	..	..	..	..	..	2
<b>Total</b>	<b>7,187</b>	<b>184</b>	<b>60</b>	<b>219</b>	<b>288</b>	<b>191</b>	<b>196</b>	<b>329</b>	<b>298</b>	<b>252</b>	<b>247</b>	<b>1</b>	<b>9,452</b>

TABLE 6. — SCHOOLS, BY CATEGORY OF SCHOOL, 1970 TO 1974

	Non-government schools								All schools
	Government schools	Denominational					Undenominational	Total	
		Church of England	Methodist	Presbyterian	Roman Catholic	Other			
<b>New South Wales (a) —</b>									
1970	2,415	34	6	12	628	25	85	790	3,205
1971	2,377	34	6	12	624	26	91	793	3,170
1972	2,335	36	6	12	644	26	94	818	3,153
1973	2,287	36	6	11	636	24	95	808	3,095
1974	2,271	34	6	12	629	25	98	804	3,075
<b>Victoria —</b>									
1970	2,215	35	4	11	487	28	16	581	2,796
1971	2,197	33	4	11	477	28	18	571	2,768
1972	2,194	32	4	11	473	28	22	570	2,764
1973	2,179	30	4	11	471	28	25	569	2,748
1974	2,161	30	4	10	470	32	25	571	2,732
<b>Queensland —</b>									
1970	1,236	14	(b)	4	294	18	(c)12	342	1,578
1971	1,228	14		4	296	19	(c)12	345	1,573
1972	1,229	13		4	291	19	(c)12	339	1,568
1973	1,228	13		2	292	22	(c)10	339	1,567
1974	1,225	13		2	289	22	(c)11	337	1,562
<b>South Australia —</b>									
1970	651	10	4	2	124	23	7	170	821
1971	631	10	4	2	122	23	8	169	800
1972	615	10	3	2	118	22	8	163	778
1973	614	9	3	2	118	24	7	163	777
1974	613	8	3	2	115	22	7	157	770
<b>Western Australia —</b>									
1970	589	8	3	2	168	10	5	196	785
1971	598	9	3	2	169	10	7	200	798
1972	606	10	3	2	165	10	7	197	803
1973	613	10	3	2	163	10	9	197	810
1974	621	10	3	2	157	11	9	192	813
<b>Tasmania —</b>									
1970	238	4	1	2	50	7	1	65	303
1971	239	4	1	2	49	6	1	63	302
1972	239	4	1	2	45	6	1	59	298
1973	241	4	1	2	43	6	1	57	298
1974	245	4	1	2	41	6	2	56	301
<b>Northern Territory —</b>									
1970	79	..	1	..	11	1	1	14	93
1971	85	..	2	..	12	1	5	20	105
1972	90	..	2	..	12	1	4	19	109
1973	91	..	2	..	11	2	3	18	109
1974	94	..	2	..	12	2	1	17	111
<b>Australian Capital Territory —</b>									
1970	47	3	..	..	19	..	..	22	69
1971	49	3	..	..	20	..	..	23	72
1972	54	3	..	..	20	1	1	25	79
1973	58	3	..	..	20	1	1	25	83
1974	65	3	..	..	18	1	1	23	88
<b>Australia —</b>									
1970	7,470	108	19	33	1,781	112	127	2,180	9,650
1971	7,404	107	20	33	1,769	113	142	2,184	9,588
1972	7,362	108	19	33	1,768	113	149	2,190	9,552
1973	7,311	105	19	30	1,754	117	151	2,176	9,487
1974	7,295	102	19	30	1,731	121	154	2,157	9,452

(a) Some schools are double counted as both government and non-government schools. See explanatory notes, paragraph 9, page 2. There were 16 such schools in 1970 for both government and non-government sectors, 17 in 1971, 18 in 1972, 15 in 1973 and 14 in 1974. (b) There are no Methodist schools in Queensland. Schools conducted by the Presbyterian and Methodist Schools Association are included with "Other". (c) Includes 8 grammar schools.

## SECTION III – TEACHERS

TABLE 7. – FULL-TIME AND PART-TIME TEACHERS, BY LEVEL OF TEACHING AND SEX, 1974  
(i) GOVERNMENT SCHOOLS

	Number of full-time teachers			Part-time teaching					
				Number of teachers			Equivalent full-time units		
	Males	Females	Persons	Males	Females	Persons	Males	Females	Persons
<b>PRIMARY</b>									
N.S.W. (a)	6,294	12,998	19,292	26	1,265	1,291	12	612	624
Vic. (b)	5,051	9,870	14,921	251	752	1,003	128	417	545
Qld (c)	3,670	5,487	9,157	..	..	..	..	..	..
S.A.	1,892	4,339	6,231	6	356	362	3	194	197
W.A.	1,684	3,011	4,695	4	163	167	1	69	70
Tas.	343	1,531	1,874	4	162	166	1	55	56
N.T.	259	492	751	2	25	27	1	9	10
A.C.T.	200	722	922	2	106	108	1	42	43
<i>Australia</i>	<i>19,393</i>	<i>38,450</i>	<i>57,843</i>	<i>295</i>	<i>2,829</i>	<i>3,124</i>	<i>147</i>	<i>1,398</i>	<i>1,544</i>
<b>SECONDARY</b>									
N.S.W. (a)	9,948	8,056	18,004	91	485	576	39	236	275
Vic. (b)	8,406	6,036	14,442	1,789	2,280	(d)4,069	899	1,307	(d)2,206
Qld (c)	3,070	2,965	6,035	..	..	..	..	..	..
S.A.	3,192	2,285	5,477	80	495	575	64	313	377
W.A.	2,282	1,592	3,874	21	262	283	9	129	138
Tas.	1,135	857	1,992	14	29	43	5	10	16
N.T.	195	170	365	1	11	12	1	6	7
A.C.T.	408	469	877	2	13	15	1	7	8
<i>Australia</i>	<i>28,636</i>	<i>22,430</i>	<i>51,066</i>	<i>1,998</i>	<i>3,575</i>	<i>5,573</i>	<i>1,018</i>	<i>2,008</i>	<i>3,026</i>
<b>NON-CLASSIFIABLE</b>									
Vic. (b)	183	368	551	14	20	34	7	11	18
S.A.	64	140	204	..	6	6	..	3	3
Tas.	23	76	99	1	13	14	..	4	5
<i>Australia</i>	<i>270</i>	<i>584</i>	<i>854</i>	<i>15</i>	<i>39</i>	<i>54</i>	<i>7</i>	<i>18</i>	<i>26</i>
<b>TOTAL</b>									
N.S.W. (a)	16,242	21,054	37,296	117	1,750	1,867	51	848	899
Vic. (b)	13,640	16,274	29,914	2,054	3,052	5,106	1,034	1,735	2,768
Qld (c)	6,740	8,452	15,192	..	..	..	..	..	..
S.A.	5,148	6,764	11,912	86	857	943	67	511	577
W.A.	3,966	4,603	8,569	25	425	450	10	198	208
Tas.	1,501	2,464	3,965	19	204	223	7	70	76
N.T.	454	662	1,116	3	36	39	2	15	17
A.C.T.	608	1,191	1,799	4	119	123	2	49	51
<i>Australia</i>	<i>48,299</i>	<i>61,464</i>	<i>109,763</i>	<i>2,308</i>	<i>6,443</i>	<i>8,751</i>	<i>1,172</i>	<i>3,425</i>	<i>4,597</i>

For footnotes, see page 10.



TABLE 7. — FULL-TIME AND PART-TIME TEACHERS, BY LEVEL OF TEACHING AND SEX, 1974 — *continued*  
(ii) NON-GOVERNMENT SCHOOLS

	Number of full-time teachers			Part-time teaching					
				Number of teachers			Equivalent full-time units		
	Males	Females	Persons	Males	Females	Persons	Males	Females	Persons
<b>PRIMARY</b>									
N.S.W. (a)	554	4,136	4,690	88	821	909	30	232	262
Vic. (b)	355	3,488	3,843	48	532	580	13	191	204
Qld	261	1,558	1,819	29	277	306	7	70	77
S.A.	149	665	814	28	218	246	7	78	85
W.A.	172	698	870	20	155	175	5	45	50
Tas.	41	245	286	9	78	87	3	26	29
N.T.	28	101	129	14	26	40	2	2	4
A.C.T.	28	213	241	1	30	31	1	8	9
<i>Australia</i>	<i>1,588</i>	<i>11,104</i>	<i>12,692</i>	<i>237</i>	<i>2,137</i>	<i>2,374</i>	<i>68</i>	<i>651</i>	<i>719</i>
<b>SECONDARY</b>									
N.S.W. (a)	2,274	2,163	4,437	248	1,002	1,250	115	485	600
Vic. (b)	2,173	2,284	4,457	230	870	1,100	82	356	438
Qld	943	862	1,805	75	360	435	20	126	146
S.A.	440	297	737	94	280	374	44	139	183
W.A.	470	468	938	59	245	304	22	83	105
Tas.	153	160	313	29	111	140	10	53	63
N.T.	12	20	32	2	3	5	1	1	2
A.C.T.	121	122	243	13	49	62	6	28	33
<i>Australia</i>	<i>6,586</i>	<i>6,376</i>	<i>12,962</i>	<i>750</i>	<i>2,920</i>	<i>3,670</i>	<i>299</i>	<i>1,269</i>	<i>1,568</i>
<b>NON-CLASSIFIABLE</b>									
Vic. (b)	13	42	55	3	21	24	1	8	9
Tas.	..	1	1	1	5	6	..	2	2
<i>Australia</i>	<i>13</i>	<i>43</i>	<i>56</i>	<i>4</i>	<i>26</i>	<i>30</i>	<i>2</i>	<i>10</i>	<i>11</i>
<b>TOTAL</b>									
N.S.W. (a)	2,828	6,299	9,127	336	1,823	2,159	145	717	862
Vic. (b)	2,541	5,814	8,355	281	1,423	1,704	97	554	651
Qld	1,204	2,420	3,624	104	637	741	28	196	224
S.A.	589	962	1,551	122	498	620	51	217	268
W.A.	642	1,166	1,808	79	400	479	27	128	155
Tas.	194	406	600	39	194	233	13	81	94
N.T.	40	121	161	16	29	45	3	2	5
A.C.T.	149	335	484	14	79	93	6	36	42
<i>Australia</i>	<i>8,187</i>	<i>17,523</i>	<i>25,710</i>	<i>991</i>	<i>5,083</i>	<i>6,074</i>	<i>369</i>	<i>1,931</i>	<i>2,300</i>

For footnotes, see next page.

TABLE 7. - FULL-TIME AND PART-TIME TEACHERS, BY LEVEL OF TEACHING AND SEX, 1974 - *continued*  
(iii) ALL SCHOOLS

	Number of full-time teachers			Part-time teaching					
				Number of teachers			Equivalent full-time units		
	Males	Females	Persons	Males	Females	Persons	Males	Females	Persons
<b>PRIMARY</b>									
N.S.W.	6,848	17,134	23,982	114	2,086	2,200	42	844	886
Vic.	5,406	13,358	18,764	299	1,284	1,583	141	607	748
Qld	3,931	7,045	10,976	29	277	306	7	70	77
S.A.	2,041	5,004	7,045	34	574	608	9	272	282
W.A.	1,856	3,709	5,565	24	318	342	6	114	120
Tas.	384	1,776	2,160	13	240	253	5	80	85
N.T.	287	593	880	16	51	67	3	10	13
A.C.T.	228	935	1,163	3	136	139	1	51	52
<i>Australia</i>	<i>20,981</i>	<i>49,554</i>	<i>70,535</i>	<i>532</i>	<i>4,966</i>	<i>5,498</i>	<i>215</i>	<i>2,049</i>	<i>2,264</i>
<b>SECONDARY</b>									
N.S.W.	12,222	10,219	22,441	339	1,487	1,826	154	721	875
Vic.	10,579	8,320	18,899	2,019	3,150	5,169	981	1,663	2,644
Qld	4,013	3,827	7,840	75	360	435	20	126	146
S.A.	3,632	2,582	6,214	174	775	949	108	452	560
W.A.	2,752	2,060	4,812	80	507	587	31	212	243
Tas.	1,288	1,017	2,305	43	140	183	15	63	78
N.T.	207	190	397	3	14	17	2	7	8
A.C.T.	529	591	1,120	15	62	77	7	35	41
<i>Australia</i>	<i>35,222</i>	<i>28,806</i>	<i>64,028</i>	<i>2,748</i>	<i>6,495</i>	<i>9,243</i>	<i>1,317</i>	<i>3,277</i>	<i>4,595</i>
<b>NON-CLASSIFIABLE</b>									
Vic.	196	410	606	17	41	58	8	18	27
S.A.	64	140	204	..	6	6	..	3	3
Tas.	23	77	100	2	18	20	1	6	7
<i>Australia</i>	<i>283</i>	<i>627</i>	<i>910</i>	<i>19</i>	<i>65</i>	<i>84</i>	<i>9</i>	<i>28</i>	<i>37</i>
<b>TOTAL</b>									
N.S.W.	19,070	27,353	46,423	453	3,573	4,026	196	1,565	1,761
Vic.	16,181	22,088	38,269	2,335	4,475	6,810	1,131	2,289	3,419
Qld	7,944	10,872	18,816	104	637	741	28	196	224
S.A.	5,737	7,726	13,463	208	1,355	1,563	117	728	845
W.A.	4,608	5,769	10,377	104	825	929	37	326	363
Tas.	1,695	2,870	4,565	58	398	456	20	150	170
N.T.	494	783	1,277	19	65	84	5	17	22
A.C.T.	757	1,526	2,283	18	198	216	8	85	93
<i>Australia</i>	<i>56,486</i>	<i>78,987</i>	<i>135,473</i>	<i>3,299</i>	<i>11,526</i>	<i>14,825</i>	<i>1,541</i>	<i>5,356</i>	<i>6,897</i>

(a) New South Wales includes all teachers on leave. (b) Victoria excludes all teachers on leave for whom a temporary replacement was made. (c) Queensland Education Department and the Department of Aboriginal and Island Affairs since 1969 and 1971, respectively, have employed only full-time teachers. (d) See explanatory notes, paragraph 6, page 2.

TABLE 8. - FULL-TIME AND PART-TIME TEACHERS, BY CATEGORY OF SCHOOL, 1974

	Non-government schools								All schools	
	Government schools	Denominational					Undenominational	Total		
		Church of England	Methodist	Presbyterian	Roman Catholic	Other				
New South Wales -										
Full-time	37,296	806	187	343	7,040	158	593	9,127	46,423	
Part-time - Number	1,867	260	38	79	1,632	37	113	2,159	4,026	
Equiv. (a)	899	135	23	37	607	12	49	862	1,761	
Victoria -										
Full-time	29,914	1,192	268	569	5,517	440	369	8,355	38,269	
Part-time - Number	(b)5,106	176	24	59	1,207	132	106	1,704	6,810	
Equiv. (a)	(b)2,768	74	13	23	436	61	44	651	3,419	
Queensland (c) -										
Full-time	15,192	336	} (d)	{	40	2,761	225	(e)262	3,624	18,816
Part-time - Number	..	55			11	593	47	(e) 35	741	741
Equiv. (a)	..	20			2	169	15	(e) 18	224	224
South Australia -										
Full-time	11,912	172	122	90	956	117	94	1,551	13,463	
Part-time - Number	943	105	43	29	321	37	85	620	1,563	
Equiv. (a)	577	58	18	17	135	8	34	268	845	
Western Australia -										
Full-time	8,569	277	126	103	1,222	48	32	1,808	10,377	
Part-time - Number	450	40	38	22	336	26	17	479	929	
Equiv. (a)	208	13	11	10	106	8	7	155	363	
Tasmania -										
Full-time	3,965	95	20	35	357	86	7	600	4,565	
Part-time - Number	223	29	12	26	158	6	2	233	456	
Equiv. (a)	76	15	7	9	59	3	1	94	170	
Northern Territory -										
Full-time	1,116	..	30	..	118	12	1	161	1,277	
Part-time - Number	39	..	3	..	42	..	..	45	84	
Equiv. (a)	17	..	1	..	4	..	..	5	22	
Australian Capital Territory -										
Full-time	1,799	104	..	..	365	2	13	484	2,283	
Part-time - Number	123	41	..	..	44	2	6	93	216	
Equiv. (a)	51	21	..	..	19	..	2	42	93	
Australia -										
Full-time	109,763	2,982	753	1,180	18,336	1,088	1,371	25,710	135,473	
Part-time - Number	8,751	706	158	226	4,333	287	364	6,074	14,825	
Equiv. (a)	4,597	336	73	98	1,535	107	155	2,300	6,897	

(a) Equivalent full-time units of part-time teaching. (b) See explanatory notes, paragraph 6, page 2. (c) The Queensland Education Department and the Department of Aboriginal and Island Affairs since 1969 and 1971, respectively, have employed only full-time teachers. (d) There are no Methodist schools in Queensland. Schools conducted by the Presbyterian and Methodist Schools Association are included with "Other". (e) Includes 237 full-time and 22 part-time (full-time equivalent 10) teachers at 8 grammar schools.

TABLE 9. — FULL-TIME AND PART-TIME TEACHERS, GOVERNMENT AND NON-GOVERNMENT SCHOOLS, 1970 TO 1974

	Government schools			Non-government schools			All schools		
	Number of full-time teachers	Part-time teaching		Number of full-time teachers	Part-time teaching		Number of full-time teachers	Part-time teaching	
		No.	Equiv. (a)		No.	Equiv. (a)		No.	Equiv. (a)
New South Wales —									
1970	32,765	2,285	1,127	8,135	2,153	643	40,900	4,438	1,770
1971	33,658	2,569	1,253	8,406	2,041	687	42,064	4,610	1,940
1972	34,970	2,882	1,588	8,725	2,184	747	43,695	5,066	2,335
1973	35,915	1,898	918	9,054	2,177	801	44,969	4,075	1,719
1974	37,296	1,867	899	9,127	2,159	862	46,423	4,026	1,761
Victoria (b) —									
1970	25,694	3,226	1,641	6,910	1,806	523	32,604	5,032	2,164
1971	26,037	4,175	2,307	7,159	1,646	557	33,196	5,821	2,864
1972	27,756	4,308	2,404	7,499	1,636	575	35,255	5,944	2,978
1973	29,516	4,699	2,591	7,874	1,714	611	37,390	6,413	3,202
1974	29,914	5,106	2,768	8,355	1,704	651	38,269	6,810	3,419
Queensland (c) —									
1970	12,250	1	..	3,167	720	182	15,417	721	182
1971	12,815	3	..	3,258	789	204	16,073	792	204
1972	13,454	..	..	3,385	823	200	16,839	823	200
1973	14,202	..	..	3,472	839	243	17,674	839	243
1974	15,192	..	..	3,624	741	224	18,816	741	224
South Australia —									
1970	9,318	614	282	1,418	529	186	10,736	1,143	468
1971	9,636	802	413	1,480	544	202	11,116	1,346	616
1972	10,253	920	514	1,505	586	217	11,758	1,506	731
1973	11,089	875	517	1,571	548	206	12,660	1,423	723
1974	11,912	943	577	1,551	620	268	13,463	1,563	845
Western Australia —									
1970	6,787	345	162	1,520	439	129	8,307	784	291
1971	7,153	427	169	1,624	451	128	8,777	878	297
1972	7,610	362	151	1,659	433	130	9,269	795	281
1973	8,099	387	165	1,705	519	154	9,804	906	319
1974	8,569	450	208	1,808	479	155	10,377	929	363
Tasmania —									
1970	3,521	280	87	593	204	73	4,114	484	161
1971	3,625	208	79	582	184	77	4,207	392	156
1972	3,729	159	57	580	215	90	4,309	374	148
1973	3,826	182	61	583	216	88	4,409	398	149
1974	3,965	223	76	600	233	94	4,565	456	170
Northern Territory —									
1970	671	15	9	97	5	1	768	20	10
1971	711	24	12	109	6	3	820	30	14
1972	819	27	12	115	7	3	934	34	15
1973	871	63	30	139	40	6	1,010	103	36
1974	1,116	39	17	161	45	5	1,277	84	22
Australian Capital Territory —									
1970	1,016	85	51	347	107	32	1,363	192	83
1971	1,096	92	47	370	112	43	1,466	204	90
1972	1,183	84	47	418	96	36	1,601	180	83
1973	1,298	82	34	445	100	38	1,743	182	72
1974	1,799	123	51	484	93	42	2,283	216	93
Australia —									
1970	92,022	6,851	3,359	22,187	5,963	1,769	114,209	12,814	5,129
1971	94,731	8,300	4,280	22,988	5,773	1,901	117,719	14,073	6,182
1972	99,774	8,742	4,773	23,886	5,980	1,998	123,660	14,722	6,771
1973	104,816	8,186	4,316	24,843	6,153	2,147	129,659	14,339	6,463
1974	109,763	8,751	4,597	25,710	6,074	2,300	135,473	14,825	6,897

(a) Equivalent full-time units of part-time teaching. (b) See explanatory notes, paragraph 6, page 2. (c) The Queensland Education Department and the Department of Aboriginal and Island Affairs since 1969 and 1971, respectively, have employed only full-time teachers.

TABLE 10. — TEACHERS, BY CATEGORY OF SCHOOL, 1970 TO 1974  
(Number of full-time teachers plus equivalent full-time units of part-time teaching)

	Non-government schools								All schools
	Government schools	Denominational					Undenom- inational	Total	
		Church of England	Methodist	Presby- terian	Roman Catholic	Other			
<b>New South Wales —</b>									
1970	33,892	953	193	387	6,520	138	587	8,778	42,670
1971	34,911	991	195	377	6,790	151	590	9,093	44,004
1972	36,558	1,006	194	374	7,111	166	621	9,472	46,030
1973	36,833	1,010	212	382	7,474	165	612	9,855	46,688
1974	38,195	941	210	380	7,647	170	642	9,989	48,184
<b>Victoria —</b>									
1970	27,335	1,126	263	545	4,775	458	266	7,433	34,768
1971	28,344	1,166	248	533	4,992	484	294	7,716	36,060
1972	30,160	1,211	253	561	5,171	509	369	8,074	38,233
1973	32,107	1,239	280	573	5,496	492	405	8,485	40,592
1974	32,682	1,266	281	592	5,953	501	413	9,006	41,688
<b>Queensland —</b>									
1970	12,250	320	(a)	51	2,539	204	235	3,349	15,599
1971	12,815	354		52	2,597	209	250	3,462	16,277
1972	13,454	360		55	2,690	217	261	3,585	17,039
1973	14,202	362		41	2,799	233	280	3,715	17,917
1974	15,192	356		42	2,930	240	280	3,848	19,040
<b>South Australia —</b>									
1970	9,600	253	121	88	915	119	108	1,604	11,204
1971	10,049	260	130	96	953	123	121	1,682	11,732
1972	10,767	251	123	99	999	131	120	1,722	12,489
1973	11,606	260	127	107	1,040	139	105	1,777	13,383
1974	12,489	230	140	107	1,091	125	128	1,819	14,308
<b>Western Australia —</b>									
1970	6,949	273	120	98	1,096	50	12	1,649	8,598
1971	7,322	277	131	104	1,169	51	20	1,752	9,074
1972	7,761	285	122	105	1,204	51	22	1,789	9,550
1973	8,264	288	137	109	1,238	55	32	1,859	10,123
1974	8,777	290	137	113	1,328	56	39	1,963	10,740
<b>Tasmania —</b>									
1970	3,608	124	25	45	386	80	6	666	4,275
1971	3,704	112	24	39	389	89	6	659	4,363
1972	3,786	111	23	44	392	95	7	670	4,456
1973	3,887	101	24	40	406	94	6	671	4,558
1974	4,041	110	27	44	416	89	8	694	4,735
<b>Northern Territory —</b>									
1970	680	..	19	..	70	8	1	98	778
1971	723	..	22	..	74	11	5	112	834
1972	831	..	18	..	87	9	4	118	949
1973	901	..	21	..	110	11	3	145	1,046
1974	1,133	..	31	..	122	12	1	166	1,299
<b>Australian Capital Territory —</b>									
1970	1,067	103	..	..	276	..	..	379	1,446
1971	1,143	107	..	..	306	..	..	413	1,556
1972	1,230	114	..	..	333	1	6	454	1,684
1973	1,332	114	..	..	357	2	10	483	1,815
1974	1,850	125	..	..	384	2	15	526	2,376
<b>Australia —</b>									
1970	95,382	3,152	741	1,214	16,577	1,057	1,215	23,956	119,338
1971	99,011	3,266	750	1,201	17,270	1,118	1,285	24,889	123,901
1972	104,547	3,338	733	1,238	17,986	1,178	1,410	25,884	130,431
1973	109,132	3,375	801	1,252	18,920	1,191	1,453	26,990	136,122
1974	114,360	3,318	826	1,278	19,871	1,195	1,526	28,010	142,370

(a) There are no Methodist schools in Queensland. Teachers at schools conducted by the Presbyterian and Methodist Schools Association are included with "Other".

## SECTION IV.— STUDENTS

TABLE 11. — STUDENTS, BY CATEGORY OF SCHOOL AND SEX, 1974

Category of school	N.S.W.	Vic.	Qld	S.A.	W.A.	Tas.	N.T.	A.C.T.	Australia
<b>MALE STUDENTS</b>									
Government schools —									
Ordinary	400,550	314,644	162,959	119,377	97,742	40,037	7,377	16,575	1,159,261
Special (a)	2,940	1,977	2,591	1,436	849	500	2,325	116	12,734
Total	403,490	316,621	165,550	120,813	98,591	40,537	9,702	16,691	1,171,995
Non-government schools —									
Denominational —									
Church of England	7,382	10,936	3,230	2,118	2,430	875	..	1,017	27,988
Methodist	1,369	1,815	(b)	1,577	772	55	208	..	5,796
Presbyterian	3,160	5,202	145	524	850	257	..	..	10,138
Roman Catholic	92,782	73,320	37,995	13,089	15,659	4,651	1,300	5,128	243,924
Other	1,467	3,960	1,904	1,336	578	753	128	18	10,144
Undenominational	3,874	1,292	(c)3,067	534	427	99	5	125	9,423
Ordinary	108,852	96,395	46,163	19,110	20,716	6,690	886	6,288	305,100
Special	1,182	130	178	68	..	..	755	..	2,313
Total	110,034	96,525	46,341	19,178	20,716	6,690	1,641	6,288	307,413
All schools —									
Ordinary	509,402	411,039	209,122	138,487	118,458	46,727	8,263	22,863	1,464,361
Special (a)	4,122	2,107	2,769	1,504	849	500	3,080	116	15,047
Total	513,524	413,146	211,891	139,991	119,307	47,227	11,343	22,979	1,479,408
<b>FEMALE STUDENTS</b>									
Government schools —									
Ordinary	372,252	290,833	153,106	110,605	89,836	37,552	6,989	15,887	1,077,060
Special (a)	1,878	1,189	1,568	1,061	487	297	2,230	80	8,790
Total	374,130	292,022	154,674	111,666	90,323	37,849	9,219	15,967	1,085,850
Non-government schools —									
Denominational —									
Church of England	7,048	7,749	2,613	1,673	1,880	734	..	886	22,583
Methodist	1,591	2,466	(b)	676	1,404	359	214	..	6,710
Presbyterian	2,795	3,681	455	1,075	703	349	..	..	9,058
Roman Catholic	92,366	77,486	38,126	13,761	17,535	5,129	1,315	4,413	250,131
Other	1,471	3,937	2,592	1,285	587	627	150	22	10,671
Undenominational	3,795	4,576	(c)1,734	1,245	374	82	2	107	11,915
Ordinary	108,127	99,696	45,332	19,637	22,483	7,272	899	5,428	308,874
Special	939	199	188	78	..	8	782	..	2,194
Total	109,066	99,895	45,520	19,715	22,483	7,280	1,681	5,428	311,068
All schools —									
Ordinary	480,379	390,529	198,438	130,242	112,319	44,824	7,888	21,315	1,385,934
Special (a)	2,817	1,388	1,756	1,139	487	305	3,012	80	10,984
Total	483,196	391,917	200,194	131,381	112,806	45,129	10,900	21,395	1,396,918
<b>ALL STUDENTS</b>									
Government schools —									
Ordinary	772,802	605,477	316,065	229,982	187,578	77,589	14,366	32,462	2,236,321
Special (a)	4,818	3,166	4,159	2,497	1,336	797	4,555	196	21,524
Total	777,620	608,643	320,224	232,479	188,914	78,386	18,921	32,658	2,257,845
Non-government schools —									
Ordinary	216,979	196,091	91,495	38,747	43,199	13,962	1,785	11,716	613,974
Special	2,121	329	366	146	..	8	1,537	..	4,507
Total	219,100	196,420	91,861	38,893	43,199	13,970	3,322	11,716	618,481
All schools —									
Ordinary	989,781	801,568	407,560	268,729	230,777	91,551	16,151	44,178	2,850,295
Special (a)	6,939	3,495	4,525	2,643	1,336	805	6,092	196	26,031
Total	996,720	805,063	412,085	271,372	232,113	92,356	22,243	44,374	2,876,326

(a) Includes enrolments of 5,758 students (2,954 males, 2,804 females) at government schools specifically set up for the education of Aboriginal children requiring other than ordinary schooling, as follows: Queensland 492 students (254 males, 238 females), South Australia 747 students (392 males, 355 females), and Northern Territory 4,519 students (2,308 males, 2,211 females). (b) There are no Methodist schools in Queensland. Schools conducted by the Presbyterian and Methodist Schools Association are included with "Other". (c) Includes 4,525 students (2,896 males, 1,629 females) enrolled at 8 grammar schools.

TABLE 12. - STUDENTS, BY CATEGORY OF SCHOOL, 1970 TO 1974

	Non-government schools							Total	All schools
	Government schools	Denominational					Undenom- inational		
		Church of England	Methodist	Presby- terian	Roman Catholic	Other			
<b>New South Wales -</b>									
1970	760,092	14,288	3,095	5,790	189,340	2,233	6,787	221,533	981,625
1971	771,392	14,508	3,040	5,744	189,501	2,529	6,873	222,195	993,587
1972	779,854	14,642	3,006	5,752	188,274	2,634	7,092	221,400	1,001,254
1973	776,799	14,794	2,977	5,784	186,508	2,657	7,198	219,918	996,717
1974	777,620	14,430	2,960	5,955	185,148	2,938	7,669	219,100	996,720
<b>Victoria -</b>									
1970	585,440	17,039	4,243	8,317	150,602	7,029	3,798	191,028	776,468
1971	593,933	17,383	4,184	8,320	150,031	7,184	4,113	191,215	785,148
1972	602,614	17,717	4,224	8,391	149,273	7,431	5,119	192,155	794,769
1973	605,644	18,182	4,296	8,606	149,236	7,668	5,449	193,437	799,081
1974	608,643	18,685	4,281	8,883	150,806	7,897	5,868	196,420	805,063
<b>Queensland -</b>									
1970	295,543	5,575	(a)	984	74,768	3,996	4,533	89,856	385,399
1971	299,876	5,720		988	75,287	4,106	4,618	90,719	390,595
1972	306,570	5,729		977	75,462	4,199	4,645	91,012	397,582
1973	314,779	5,694		598	75,313	4,288	4,757	90,650	405,429
1974	320,224	5,843		600	76,121	4,496	4,801	91,861	412,085
<b>South Australia -</b>									
1970	228,788	4,028	2,287	1,547	25,816	2,373	1,336	37,387	266,175
1971	231,440	4,051	2,310	1,534	26,189	2,412	1,380	37,876	269,316
1972	232,812	3,859	2,221	1,594	26,106	2,509	1,400	37,689	270,501
1973	231,786	3,793	2,227	1,636	26,291	2,694	1,321	37,962	269,748
1974	232,479	3,791	2,253	1,599	26,850	2,621	1,779	38,893	271,372
<b>Western Australia -</b>									
1970	174,024	4,102	1,903	1,444	33,270	914	311	41,944	215,968
1971	179,889	4,083	2,005	1,504	33,080	995	446	42,113	222,002
1972	183,539	4,210	2,050	1,508	33,001	1,037	492	42,298	225,837
1973	185,220	4,265	2,052	1,512	33,018	1,107	624	42,578	227,798
1974	188,914	4,310	2,176	1,553	33,194	1,165	801	43,199	232,113
<b>Tasmania -</b>									
1970	77,447	1,757	315	582	10,316	1,261	168	14,399	91,846
1971	78,164	1,612	335	555	10,167	1,315	163	14,147	92,311
1972	78,212	1,557	327	538	9,859	1,339	171	13,791	92,003
1973	77,991	1,558	336	572	9,844	1,371	171	13,852	91,843
1974	78,386	1,609	414	606	9,780	1,380	181	13,970	92,356
<b>Northern Territory -</b>									
1970	13,790	..	423	..	2,082	201	22	2,728	16,518
1971	15,168	..	435	..	2,235	214	37	2,921	18,089
1972	16,799	..	493	..	2,321	236	26	3,076	19,875
1973	17,984	..	437	..	2,360	266	24	3,087	21,071
1974	18,921	..	422	..	2,615	278	7	3,322	22,243
<b>Australian Capital Territory -</b>									
1970	25,053	1,526	..	..	7,655	..	..	9,181	34,234
1971	26,709	1,653	..	..	8,235	..	..	9,888	36,597
1972	28,541	1,802	..	..	8,618	22	147	10,589	39,130
1973	30,439	1,844	..	..	9,205	33	203	11,285	41,724
1974	32,658	1,903	..	..	9,541	40	232	11,716	44,374
<b>Australia -</b>									
1970	2,160,177	48,315	12,266	18,664	493,849	18,007	16,955	608,056	2,768,233
1971	2,196,571	49,010	12,309	18,645	494,725	18,755	17,630	611,074	2,807,645
1972	2,228,941	49,516	12,321	18,760	492,914	19,407	19,092	612,010	2,840,951
1973	2,240,642	50,130	12,325	18,708	491,775	20,084	19,747	612,769	2,853,411
1974	2,257,845	50,571	12,506	19,196	494,055	20,815	21,338	618,481	2,876,326

(a) There are no Methodist schools in Queensland. Schools conducted by the Presbyterian and Methodist Schools Association are included with "Other".

TABLE 13. - GRADES OF STUDENTS, BY CATEGORY OF SCHOOL, 1974  
(i) NUMBER OF STUDENTS

	Non-government schools							Total	All schools
	Government schools	Denominational					Undenom- inational		
		Church of England	Methodist	Presby- terian	Roman Catholic	Other			
NEW SOUTH WALES (a)									
Infants -									
Kindergarten	70,238	722	76	218	15,802	277	428	17,523	87,761
1	71,978	411	58	141	15,894	212	365	17,081	89,059
2	67,997	398	56	136	16,247	236	289	17,362	85,359
Primary -									
3	65,361	473	95	211	16,650	232	305	17,966	83,327
4	65,818	601	121	224	16,591	235	331	18,103	83,921
5	67,592	771	132	297	16,897	209	366	18,672	86,264
6	69,973	994	184	359	17,069	252	445	19,303	89,276
Special primary grades (b)	11,033	..	..	..	225	..	1,786	2,011	13,044
Ungraded non-special	..	..	..	..	..	..	236	236	236
Secondary -									
Form I or 7	69,586	1,767	398	790	15,643	316	540	19,454	89,040
Form II or 8	67,306	1,822	410	738	15,494	291	558	19,313	86,619
Form III or 9	58,525	1,886	383	812	14,400	221	507	18,209	76,734
Form IV	48,936	1,751	388	754	12,946	225	490	16,554	65,490
Form V	21,476	1,490	334	674	5,902	127	495	9,022	30,498
Form VI	18,740	1,344	325	601	5,271	105	451	8,097	26,837
Special secondary grades (b)	1,719	..	..	..	117	..	29	146	1,865
Ungraded non-special	..	..	..	..	..	..	48	48	48
Correspondence students (c)	1,342	..	..	..	..	..	..	..	1,342
<b>Total</b>	<b>777,620</b>	<b>14,430</b>	<b>2,960</b>	<b>5,955</b>	<b>185,148</b>	<b>2,938</b>	<b>7,669</b>	<b>219,100</b>	<b>996,720</b>
VICTORIA									
Primary -									
Preparatory	58,251	674	56	240	13,035	423	326	14,754	73,005
Year 1	54,470	676	70	301	13,156	650	411	15,264	69,734
Year 2	52,635	682	65	253	13,369	500	332	15,201	67,836
Year 3	50,926	647	74	254	13,340	470	291	15,076	66,002
Year 4	51,568	758	138	320	13,908	473	284	15,881	67,449
Year 5	52,024	952	174	368	14,195	490	327	16,506	68,530
Year 6	52,613	1,128	185	471	14,160	527	351	16,822	69,435
Ungraded special (d)	3,166	..	..	..	197	..	132	329	3,495
Secondary -									
Year 7	52,840	2,253	573	1,062	12,109	760	465	17,222	70,062
Year 8	52,691	2,253	588	1,101	11,632	806	449	16,829	69,520
Year 9	48,545	2,281	596	1,117	10,675	793	488	15,950	64,495
Year 10	40,269	2,282	605	1,134	9,291	757	493	14,562	54,831
Year 11	26,603	2,217	656	1,237	7,143	707	641	12,601	39,204
Year 12	12,042	1,882	501	1,025	4,596	541	878	9,423	21,465
<b>Total</b>	<b>608,643</b>	<b>18,685</b>	<b>4,281</b>	<b>8,883</b>	<b>150,806</b>	<b>7,897</b>	<b>5,868</b>	<b>196,420</b>	<b>805,063</b>
QUEENSLAND (e)									
Primary -									
Grade 1	34,116	102		6	7,503	298	28	7,937	42,053
Grade 2	31,768	79		8	7,221	200	26	7,534	39,302
Grade 3	29,684	65		3	7,164	207	23	7,462	37,146
Grade 4	29,625	108		8	7,186	163	20	7,485	37,110
Grade 5	30,427	216		8	7,248	230	25	7,727	38,154
Grade 6	31,219	322		13	7,276	246	30	7,887	39,106
Grade 7	31,285	548		44	7,488	362	54	8,496	39,781
Ungraded (b)	3,930	..	(f)	..	7	9	..	16	3,946
Secondary -									
Grade 8	30,078	985		97	6,813	624	998	9,517	39,595
Grade 9	28,121	1,008		105	6,558	653	979	9,303	37,424
Grade 10	24,594	961		116	6,019	585	938	8,619	33,213
Grade 11	8,508	821		112	3,114	488	844	5,379	13,887
Grade 12	6,869	628		80	2,524	431	836	4,499	11,368
<b>Total</b>	<b>320,224</b>	<b>5,843</b>		<b>600</b>	<b>76,121</b>	<b>4,496</b>	<b>4,801</b>	<b>91,861</b>	<b>412,085</b>

(a) Excludes students enrolled at subsidised (public) schools and Norfolk Island. (b) Students in special classes at ordinary schools and ungraded students at special schools. (c) Correspondence students are not shown by grade. They could be approximately graded as follows: Infants: Kindergarten - 87; 1-153; 2-111; Primary: 3-126; 4-91; 5-87; 6-73; Secondary: I-158; II-118; III-119; IV-130; V-52; VI-37. (d) All students at special schools and ungraded students at primary schools. (e) Excludes students enrolled in Pre-school classes. See paragraph 7, page 2 of explanatory notes. (f) There are no Methodist schools in Queensland. Schools conducted by the Presbyterian and Methodist Schools Association are included with "Other".



TABLE 13. - GRADES OF STUDENTS, BY CATEGORY OF SCHOOL, 1974 - *continued*  
(i) NUMBER OF STUDENTS - *continued*

	Non-government schools							Total	All schools
	Government schools	Denominational					Undenom- inational		
		Church of England	Methodist	Presby- terian	Roman Catholic	Other			
<b>SOUTH AUSTRALIA</b>									
Pre-primary	..	153	..	..	47	63	13	276	276
Primary -									
Preparatory (a)	7,071	48	3	22	1,031	35	17	1,156	8,227
Grade I	20,715	165	49	31	2,276	222	53	2,796	23,511
Grade II	20,040	141	38	29	2,213	186	47	2,654	22,694
Grade III	19,735	134	38	26	2,174	203	51	2,626	22,361
Grade IV	20,069	135	61	34	2,400	199	64	2,893	22,962
Grade V	20,299	207	71	41	2,355	210	68	2,952	23,251
Grade VI	20,885	223	109	48	2,481	197	89	3,147	24,032
Grade VII	21,366	296	127	110	2,480	219	100	3,332	24,698
Ungraded special (b)	2,721	6	..	..	48	..	83	137	2,858
Ungraded non-special	..	12	..	190	228	..	..	430	430
Secondary -									
VIII or 1st	21,799	432	328	212	2,299	244	213	3,728	25,527
IX or 2nd	20,762	471	351	230	2,184	244	219	3,699	24,461
X or 3rd	17,737	457	355	224	1,936	225	238	3,435	21,172
XI or 4th	13,118	480	413	211	1,724	223	295	3,346	16,464
5th	5,472	431	310	191	974	151	229	2,286	7,758
Ungraded special (c)	690	..	..	..	..	..	..	..	690
<b>Total</b>	<b>232,479</b>	<b>3,791</b>	<b>2,253</b>	<b>1,599</b>	<b>26,850</b>	<b>2,621</b>	<b>1,779</b>	<b>38,893</b>	<b>271,372</b>
<b>WESTERN AUSTRALIA</b>									
Primary -									
Kindergarten	..	26	40	19	207	59	60	411	411
Grade 1	19,529	83	53	25	3,174	141	155	3,631	23,160
Grade 2	17,993	85	39	30	2,971	94	99	3,318	21,311
Grade 3	17,709	105	43	37	3,060	110	87	3,442	21,151
Grade 4	17,457	121	52	42	3,014	123	64	3,416	20,873
Grade 5	17,868	148	56	57	3,146	118	79	3,604	21,472
Grade 6	18,402	187	85	61	3,029	120	64	3,546	21,948
Grade 7	18,096	335	134	102	2,981	101	70	3,723	21,819
Special primary classes	1,155	..	..	..	..	..	..	..	1,155
Secondary -									
Year 1	17,403	700	411	255	3,138	88	33	4,625	22,028
Year 2	16,415	710	353	240	2,975	58	32	4,368	20,783
Year 3	14,103	676	316	252	2,636	58	25	3,963	18,066
Year 4	6,814	603	338	221	1,612	53	20	2,847	9,661
Year 5	4,276	531	256	212	1,251	42	13	2,305	6,581
Special secondary classes	358	..	..	..	..	..	..	..	358
Special schools	1,336	..	..	..	..	..	..	..	1,336
<b>Total</b>	<b>188,914</b>	<b>4,310</b>	<b>2,176</b>	<b>1,553</b>	<b>33,194</b>	<b>1,165</b>	<b>801</b>	<b>43,199</b>	<b>232,113</b>
<b>TASMANIA</b>									
Kindergarten	4,538	70	20	44	..	24	..	158	4,696
Primary -									
Preparatory	2,395	43	20	..	885	71	11	1,030	3,425
Grade 1	7,131	68	11	33	802	75	20	1,009	8,140
Grade 2	6,637	61	17	17	799	66	35	995	7,632
Grade 3	6,441	43	9	10	805	71	30	968	7,409
Grade 4	6,789	53	13	16	836	90	26	1,034	7,823
Grade 5	7,107	70	16	28	908	80	35	1,137	8,244
Grade 6	7,028	124	27	40	854	136	24	1,205	8,233
Secondary -									
Year I	7,233	202	63	82	931	124	..	1,402	8,635
Year II	7,162	203	63	78	863	163	..	1,370	8,532
Year III	6,485	203	49	80	781	162	..	1,275	7,760
Year IV	5,139	204	52	86	746	163	..	1,251	6,390
Year V (d)	1,942	155	32	49	324	90	..	650	2,592
Year VI (d)	1,386	110	22	43	238	65	..	478	1,864
Ungraded (e)	973	..	..	..	8	..	..	8	981
<b>Total</b>	<b>78,386</b>	<b>1,609</b>	<b>414</b>	<b>606</b>	<b>9,780</b>	<b>1,380</b>	<b>181</b>	<b>13,970</b>	<b>92,356</b>

(a) "Preparatory" refers to children who commenced school at the mid-year intake. (b) Occupation centres, opportunity classes, speech and hearing classes, children in schools at spastic centres, special schools, schools at institutions and physical disability classes. (c) Speech and hearing classes (28), schools at institutions (38), and special senior classes (624). (d) The higher school certificate is taken at the end of either the fifth or sixth year of secondary education. (e) Schools or classes for physically or mentally handicapped or delinquent children.

TABLE 13. - GRADES OF STUDENTS, BY CATEGORY OF SCHOOL, 1974 - *continued*  
(i) NUMBER OF STUDENTS - *continued*

	Non-government schools						Total	All schools
	Government schools	Denominational				Undenom- inational		
		Church of England	Methodist	Roman Catholic	Other			
<b>NORTHERN TERRITORY</b>								
Primary -								
Preparatory (a)	612	..	..	26	..	..	26	638
Grade I	1,750	..	..	293	7	..	300	2,050
Grade II	1,569	..	..	210	4	..	214	1,783
Grade III	1,491	..	..	189	3	..	192	1,683
Grade IV	1,355	..	..	190	3	..	193	1,548
Grade V	1,353	..	..	172	5	..	177	1,530
Grade VI	1,239	..	..	152	2	..	154	1,393
Grade VII	1,237	..	..	162	3	..	165	1,402
Ungraded (b)	4,553	..	422	857	251	7	1,537	6,090
Secondary -								
VIII or 1st	1,202	..	..	114	..	..	114	1,316
IX or 2nd	1,029	..	..	114	..	..	114	1,143
X or 3rd	808	..	..	83	..	..	83	891
XI or 4th	510	..	..	42	..	..	42	552
5th	211	..	..	11	..	..	11	222
Ungraded (b)	2	..	..	..	..	..	..	2
<b>Total</b>	<b>18,921</b>	<b>..</b>	<b>422</b>	<b>2,615</b>	<b>278</b>	<b>7</b>	<b>3,322</b>	<b>22,243</b>

**AUSTRALIAN CAPITAL TERRITORY**

Infants -								
Kindergarten	3,212	68	..	795	5	26	894	4,106
1	3,256	68	..	883	7	14	972	4,228
2	2,946	68	..	825	3	41	937	3,883
Primary -								
3	2,805	90	..	917	5	21	1,033	3,838
4	2,735	96	..	833	6	35	970	3,705
5	2,826	121	..	856	5	24	1,006	3,832
6	2,879	123	..	801	9	26	959	3,838
Special primary grades (c)	316	..	..	..	..	..	..	316
Secondary -								
Form I	2,596	231	..	853	..	22	1,106	3,702
Form II	2,453	217	..	779	..	20	1,016	3,469
Form III	2,241	225	..	687	..	3	915	3,156
Form IV	1,980	214	..	594	..	..	808	2,788
Form V	1,250	210	..	392	..	..	602	1,852
Form VI	1,035	172	..	326	..	..	498	1,533
Special secondary grades (c)	128	..	..	..	..	..	..	128
<b>Total</b>	<b>32,658</b>	<b>1,903</b>	<b>..</b>	<b>9,541</b>	<b>40</b>	<b>232</b>	<b>11,716</b>	<b>44,374</b>

(a) "Preparatory" refers to children who commenced school at the mid-year intake. (b) Mainly Aboriginal children at special schools on settlements, missions and on pastoral properties. (c) Students in special classes at ordinary schools and ungraded students at special schools.

TABLE 13. - GRADES OF STUDENTS, BY CATEGORY OF SCHOOL, 1974 - *continued*  
(ii) TOTAL STUDENTS IN PRIMARY, SECONDARY, AND UNCLASSIFIABLE GRADES

	N.S.W.	Vic.	Qld	S.A.	W.A.	Tas.	N.T.	A.C.T.	Australia
Primary grades (a) -									
Government schools	490,718	375,653	222,054	152,901	128,209	48,066	15,159	20,975	1,453,735
Non-government schools	128,257	109,833	54,544	22,399	25,091	7,536	2,958	6,771	357,389
<b>Total</b>	<b>618,975</b>	<b>485,486</b>	<b>276,598</b>	<b>175,300</b>	<b>153,300</b>	<b>55,602</b>	<b>18,117</b>	<b>27,746</b>	<b>1,811,124</b>
Secondary grades -									
Government schools	286,902	232,990	98,170	79,578	59,369	29,347	3,762	11,683	801,801
Non-government schools	90,843	86,587	37,317	16,494	18,108	6,426	364	4,945	261,084
<b>Total</b>	<b>377,745</b>	<b>319,577</b>	<b>135,487</b>	<b>96,072</b>	<b>77,477</b>	<b>35,773</b>	<b>4,126</b>	<b>16,628</b>	<b>1,062,885</b>
Not classifiable as primary or secondary grades -									
Government schools	..	..	..	..	1,336	973	..	..	2,309
Non-government schools	..	..	..	..	..	8	..	..	8
<b>Total</b>	<b>..</b>	<b>..</b>	<b>..</b>	<b>..</b>	<b>1,336</b>	<b>981</b>	<b>..</b>	<b>..</b>	<b>2,317</b>
Total grades -									
Government schools	777,620	608,643	320,224	232,479	188,914	78,386	18,921	32,658	2,257,845
Non-government schools	219,100	196,420	91,861	38,893	43,199	13,970	3,322	11,716	618,481
<b>Total</b>	<b>996,720</b>	<b>805,063</b>	<b>412,085</b>	<b>271,372</b>	<b>232,113</b>	<b>92,356</b>	<b>22,243</b>	<b>44,374</b>	<b>2,876,326</b>

(a) Includes those kindergarten and preparatory students shown in Part (i) of Table 13.

TABLE 14. - AGES OF STUDENTS, BY CATEGORY OF SCHOOL AND SEX : AUSTRALIA, 1974

Age last birthday (years)	Non-government schools								All schools
	Government schools	Denominational					Undenom- inational	Total	
		Church of England	Methodist	Presby- terian	Roman Catholic	Other			
MALE STUDENTS									
Under 6	88,856	1,063	144	277	17,376	717	859	20,436	109,292
6	101,860	726	106	231	20,921	679	498	23,161	125,021
7	100,213	746	108	226	21,198	654	421	23,353	123,566
8	97,853	828	128	335	21,526	614	413	23,844	121,697
9	99,696	1,058	210	312	22,119	700	377	24,776	124,472
10	103,512	1,431	262	454	22,349	700	434	25,630	129,142
11	105,404	1,818	317	579	22,411	750	476	26,351	131,755
12	104,770	3,006	702	1,153	20,989	918	726	27,494	132,264
13	104,516	3,669	859	1,339	19,902	1,066	1,086	27,921	132,437
14	100,548	3,727	797	1,386	18,406	1,016	979	26,311	126,859
15	80,650	3,597	818	1,318	16,174	888	893	23,688	104,338
16	50,476	3,261	730	1,294	11,398	774	935	18,392	68,868
17	25,491	2,467	499	993	7,253	524	766	12,502	37,993
18	6,904	523	100	224	1,709	128	283	2,967	9,871
19 and over	1,246	68	16	17	193	16	277	587	1,833
All ages	1,171,995	27,988	5,796	10,138	243,924	10,144	9,423	307,413	1,479,408
FEMALE STUDENTS									
Under 6	84,504	1,109	225	361	17,632	748	940	21,015	105,519
6	95,822	708	148	288	20,951	673	623	23,391	119,213
7	94,220	690	168	277	21,215	636	567	23,553	117,773
8	91,939	706	157	255	21,673	621	553	23,965	115,904
9	93,509	852	185	333	22,427	597	620	25,014	118,523
10	96,435	1,038	220	372	23,011	671	575	25,887	122,322
11	98,625	1,394	346	490	23,278	764	734	27,006	125,631
12	97,248	2,523	696	1,001	22,336	1,060	1,047	28,663	125,911
13	96,447	3,000	1,006	1,114	21,543	1,195	1,235	29,093	125,540
14	92,734	3,025	947	1,186	20,223	1,138	1,306	27,825	120,559
15	73,863	2,957	916	1,264	17,660	1,105	1,265	25,167	99,030
16	43,962	2,567	953	1,165	10,984	887	1,213	17,769	61,731
17	21,783	1,736	633	815	6,199	501	814	10,698	32,481
18	4,131	263	103	131	904	66	228	1,695	5,826
19 and over	628	15	7	6	95	9	195	327	955
All ages	1,085,850	22,583	6,710	9,058	250,131	10,671	11,915	311,068	1,396,918
ALL STUDENTS									
Under 6	173,360	2,172	369	638	35,008	1,465	1,799	41,451	214,811
6	197,682	1,434	254	519	41,872	1,352	1,121	46,552	244,234
7	194,433	1,436	276	503	42,413	1,290	988	46,906	241,339
8	189,792	1,534	285	590	43,199	1,235	966	47,809	237,601
9	193,205	1,910	395	645	44,546	1,297	997	49,790	242,995
10	199,947	2,469	482	826	45,360	1,371	1,009	51,517	251,464
11	204,029	3,212	663	1,069	45,689	1,514	1,210	53,357	257,386
12	202,018	5,529	1,398	2,154	43,325	1,978	1,773	56,157	258,175
13	200,963	6,669	1,865	2,453	41,445	2,261	2,321	57,014	257,977
14	193,282	6,752	1,744	2,572	38,629	2,154	2,285	54,136	247,418
15	154,513	6,554	1,734	2,582	33,834	1,993	2,158	48,855	203,368
16	94,438	5,828	1,683	2,459	22,382	1,661	2,148	36,161	130,599
17	47,274	4,203	1,132	1,808	13,452	1,025	1,580	23,200	70,474
18	11,035	786	203	355	2,613	194	511	4,662	15,697
19 and over	1,874	83	23	23	288	25	472	914	2,788
All ages	2,257,845	50,571	12,506	19,196	494,055	20,815	21,338	618,481	2,876,326

TABLE 15. — AGES OF STUDENTS, BY SEX, 1974  
(i) GOVERNMENT SCHOOLS

<i>Age last birthday (years)</i>	<i>N.S.W.</i>	<i>Vic.</i>	<i>Qld</i>	<i>S.A.</i>	<i>W.A.</i>	<i>Tas.</i>	<i>N.T.</i>	<i>A.C.T.</i>	<i>Australia</i>
<b>MALE STUDENTS</b>									
Under 6	33,985	26,824	8,547	9,235	3,967	3,389	1,290	1,619	88,856
6	33,182	27,861	15,332	10,339	9,338	3,329	981	1,498	101,860
7	33,374	27,057	15,161	9,718	9,154	3,288	995	1,466	100,213
8	32,122	26,082	14,765	10,212	9,146	3,232	935	1,359	97,853
9	32,980	26,349	15,185	10,313	9,077	3,495	910	1,387	99,696
10	34,744	26,832	15,976	10,693	9,457	3,611	861	1,338	103,512
11	35,340	27,325	16,171	10,800	9,831	3,695	778	1,464	105,404
12	36,076	26,850	15,923	10,564	9,415	3,768	753	1,421	104,770
13	35,761	27,616	15,480	10,797	9,065	3,756	736	1,305	104,516
14	34,416	26,378	15,169	10,576	8,642	3,630	547	1,190	100,548
15	28,499	22,748	10,088	8,591	6,238	2,995	452	1,039	80,650
16	18,697	15,300	4,795	5,733	3,390	1,435	304	822	50,476
17	10,602	7,179	2,373	2,387	1,678	616	119	537	25,491
18	3,358	1,785	479	660	175	198	31	218	6,904
19 and over	354	435	106	195	18	100	10	28	1,246
<i>All ages</i>	<i>403,490</i>	<i>316,621</i>	<i>165,550</i>	<i>120,813</i>	<i>98,591</i>	<i>40,537</i>	<i>9,702</i>	<i>16,691</i>	<i>1,171,995</i>
<b>FEMALE STUDENTS</b>									
Under 6	32,357	25,450	8,276	8,785	3,745	3,154	1,267	1,470	84,504
6	31,452	26,191	14,432	9,545	8,634	3,203	954	1,411	95,822
7	31,449	25,507	14,190	9,309	8,448	3,075	864	1,378	94,220
8	29,998	24,794	13,946	9,454	8,400	3,140	902	1,305	91,939
9	30,908	24,856	14,157	9,605	8,539	3,265	820	1,359	93,509
10	32,251	24,988	15,064	9,843	8,665	3,434	838	1,352	96,435
11	33,364	25,554	15,184	10,105	8,867	3,403	781	1,367	98,625
12	33,689	24,576	14,971	9,994	8,531	3,346	734	1,407	97,248
13	33,071	24,978	14,546	10,045	8,266	3,587	697	1,257	96,447
14	31,931	23,881	13,900	10,073	7,865	3,314	577	1,193	92,734
15	26,591	19,828	9,194	8,003	5,909	2,870	414	1,054	73,863
16	15,798	13,608	4,537	4,718	3,064	1,258	253	726	43,962
17	8,992	6,482	1,952	1,789	1,318	617	87	546	21,783
18	2,127	1,101	272	289	65	124	22	131	4,131
19 and over	152	228	53	109	7	59	9	11	628
<i>All ages</i>	<i>374,130</i>	<i>292,022</i>	<i>154,674</i>	<i>111,666</i>	<i>90,323</i>	<i>37,849</i>	<i>9,219</i>	<i>15,967</i>	<i>1,085,850</i>
<b>ALL STUDENTS</b>									
Under 6	66,342	52,274	16,823	18,020	7,712	6,543	2,557	3,089	173,360
6	64,634	54,052	29,764	19,884	17,972	6,532	1,935	2,909	197,682
7	64,823	52,564	29,351	19,027	17,602	6,363	1,859	2,844	194,433
8	62,120	50,876	28,711	19,666	17,546	6,372	1,837	2,664	189,792
9	63,888	51,205	29,342	19,918	17,616	6,760	1,730	2,746	193,205
10	66,995	51,820	31,040	20,536	18,122	7,045	1,699	2,690	199,947
11	68,704	52,879	31,355	20,905	18,698	7,098	1,559	2,831	204,029
12	69,765	51,426	30,894	20,558	17,946	7,114	1,487	2,828	202,018
13	68,832	52,594	30,026	20,842	17,331	7,343	1,433	2,562	200,963
14	66,347	50,259	29,069	20,649	16,507	6,944	1,124	2,383	193,282
15	55,090	42,576	19,282	16,594	12,147	5,865	866	2,093	154,513
16	34,495	28,908	9,332	10,451	6,454	2,693	557	1,548	94,438
17	19,594	13,661	4,325	4,176	2,996	1,233	206	1,083	47,274
18	5,485	2,886	751	949	240	322	53	349	11,035
19 and over	506	663	159	304	25	159	19	39	1,874
<i>All ages</i>	<i>777,620</i>	<i>608,643</i>	<i>320,224</i>	<i>232,479</i>	<i>188,914</i>	<i>78,386</i>	<i>18,921</i>	<i>32,658</i>	<i>2,257,845</i>

TABLE 15. - AGES OF STUDENTS, BY SEX, 1974 - *continued*  
(ii) NON-GOVERNMENT SCHOOLS

<i>Age last birthday (years)</i>	<i>N.S.W.</i>	<i>Vic.</i>	<i>Qld</i>	<i>S.A.</i>	<i>W.A.</i>	<i>Tas.</i>	<i>N.T.</i>	<i>A.C.T.</i>	<i>Australia</i>
<b>MALE STUDENTS</b>									
Under 6	8,038	6,786	1,811	1,605	958	537	243	458	20,436
6	8,250	7,429	3,560	1,256	1,544	475	173	474	23,161
7	8,333	7,450	3,627	1,254	1,555	471	182	481	23,353
8	8,779	7,432	3,609	1,295	1,655	421	176	477	23,844
9	8,981	7,942	3,637	1,413	1,619	517	157	510	24,776
10	9,371	8,218	3,795	1,537	1,565	524	143	477	25,630
11	9,513	8,462	3,877	1,660	1,639	566	143	491	26,351
12	9,696	8,389	4,496	1,670	1,904	638	121	580	27,494
13	9,668	8,084	4,811	1,800	2,216	655	106	581	27,921
14	9,123	7,699	4,562	1,677	2,024	626	82	518	26,311
15	8,257	6,962	3,967	1,610	1,760	589	70	473	23,688
16	6,073	6,080	2,748	1,337	1,350	381	30	393	18,392
17	4,558	4,207	1,556	810	850	233	11	277	12,502
18	1,228	1,081	220	221	70	55	3	89	2,967
19 and over	166	304	65	33	7	2	1	9	587
<i>All ages</i>	<i>110,034</i>	<i>96,525</i>	<i>46,341</i>	<i>19,178</i>	<i>20,716</i>	<i>6,690</i>	<i>1,641</i>	<i>6,288</i>	<i>307,413</i>
<b>FEMALE STUDENTS</b>									
Under 6	8,272	6,918	1,961	1,661	958	563	264	418	21,015
6	8,257	7,400	3,590	1,358	1,680	484	203	419	23,391
7	8,494	7,405	3,557	1,347	1,646	475	177	452	23,553
8	8,645	7,498	3,536	1,423	1,729	485	168	481	23,965
9	9,001	7,874	3,722	1,481	1,818	527	132	459	25,014
10	9,290	8,149	3,894	1,485	1,831	567	143	528	25,887
11	9,651	8,493	4,077	1,582	1,962	642	151	448	27,006
12	9,789	9,108	4,475	1,825	2,099	772	120	475	28,663
13	9,832	8,995	4,666	1,909	2,419	718	122	432	29,093
14	9,424	8,592	4,475	1,826	2,311	720	69	408	27,825
15	8,841	7,872	3,761	1,698	1,910	646	62	377	25,167
16	5,134	6,690	2,482	1,348	1,367	436	48	264	17,769
17	3,536	4,137	1,212	659	716	210	17	211	10,698
18	758	617	98	104	32	32	2	52	1,695
19 and over	142	147	14	9	5	3	3	4	327
<i>All ages</i>	<i>109,066</i>	<i>99,895</i>	<i>45,520</i>	<i>19,715</i>	<i>22,483</i>	<i>7,280</i>	<i>1,681</i>	<i>5,428</i>	<i>311,068</i>
<b>ALL STUDENTS</b>									
Under 6	16,310	13,704	3,772	3,266	1,916	1,100	507	876	41,451
6	16,507	14,829	7,150	2,614	3,224	959	376	893	46,552
7	16,827	14,855	7,184	2,601	3,201	946	359	933	46,906
8	17,424	14,930	7,145	2,718	3,384	906	344	958	47,809
9	17,982	15,816	7,359	2,894	3,437	1,044	289	969	49,790
10	18,661	16,367	7,689	3,022	3,396	1,091	286	1,005	51,517
11	19,164	16,955	7,954	3,242	3,601	1,208	294	939	53,357
12	19,485	17,497	8,971	3,495	4,003	1,410	241	1,055	56,157
13	19,500	17,079	9,477	3,709	4,635	1,373	228	1,013	57,014
14	18,547	16,291	9,037	3,503	4,335	1,346	151	926	54,136
15	17,098	14,834	7,728	3,308	3,670	1,235	132	850	48,855
16	11,207	12,770	5,230	2,685	2,717	817	78	657	36,161
17	8,094	8,344	2,768	1,469	1,566	443	28	488	23,200
18	1,986	1,698	318	325	102	87	5	141	4,662
19 and over	308	451	79	42	12	5	4	13	914
<i>All ages</i>	<i>219,100</i>	<i>196,420</i>	<i>91,861</i>	<i>38,893</i>	<i>43,199</i>	<i>13,970</i>	<i>3,322</i>	<i>11,716</i>	<i>618,481</i>

TABLE 15. — AGES OF STUDENTS, BY SEX, 1974 — *continued*  
(iii) ALL SCHOOLS

<i>Age last birthday (years)</i>	<i>N.S.W.</i>	<i>Vic.</i>	<i>Qld</i>	<i>S.A.</i>	<i>W.A.</i>	<i>Tas.</i>	<i>N.T.</i>	<i>A.C.T.</i>	<i>Australia</i>
<b>MALE STUDENTS</b>									
Under 6	42,023	33,610	10,358	10,840	4,925	3,926	1,533	2,077	109,292
6	41,432	35,290	18,892	11,595	10,882	3,804	1,154	1,972	125,021
7	41,707	34,507	18,788	10,972	10,709	3,759	1,177	1,947	123,566
8	40,901	33,514	18,374	11,507	10,801	3,653	1,111	1,836	121,697
9	41,961	34,291	18,822	11,726	10,696	4,012	1,067	1,897	124,472
10	44,115	35,050	19,771	12,230	11,022	4,135	1,004	1,815	129,142
11	44,853	35,787	20,048	12,460	11,470	4,261	921	1,955	131,755
12	45,772	35,239	20,419	12,234	11,319	4,406	874	2,001	132,264
13	45,429	35,700	20,291	12,597	11,281	4,411	842	1,886	132,437
14	43,539	34,077	19,731	12,253	10,666	4,256	629	1,708	126,859
15	36,756	29,710	14,055	10,201	7,998	3,584	522	1,512	104,338
16	24,770	21,380	7,543	7,070	4,740	1,816	334	1,215	68,868
17	15,160	11,386	3,929	3,197	2,528	849	130	814	37,993
18	4,586	2,866	699	881	245	253	34	307	9,871
19 and over	520	739	171	228	25	102	11	37	1,833
<i>All ages</i>	<i>513,524</i>	<i>413,146</i>	<i>211,891</i>	<i>139,991</i>	<i>119,307</i>	<i>47,227</i>	<i>11,343</i>	<i>22,979</i>	<i>1,479,408</i>
<b>FEMALE STUDENTS</b>									
Under 6	40,629	32,368	10,237	10,446	4,703	3,717	1,531	1,888	105,519
6	39,709	33,591	18,022	10,903	10,314	3,687	1,157	1,830	119,213
7	39,943	32,912	17,747	10,656	10,094	3,550	1,041	1,830	117,773
8	38,643	32,292	17,482	10,877	10,129	3,625	1,070	1,786	115,904
9	39,909	32,730	17,879	11,086	10,357	3,792	952	1,818	118,523
10	41,541	33,137	18,958	11,328	10,496	4,001	981	1,880	122,322
11	43,015	34,047	19,261	11,687	10,829	4,045	932	1,815	125,631
12	43,478	33,684	19,446	11,819	10,630	4,118	854	1,882	125,911
13	42,903	33,973	19,212	11,954	10,685	4,305	819	1,689	125,540
14	41,355	32,473	18,375	11,899	10,176	4,034	646	1,601	120,559
15	35,432	27,700	12,955	9,701	7,819	3,516	476	1,431	99,030
16	20,932	20,298	7,019	6,066	4,431	1,694	301	990	61,731
17	12,528	10,619	3,164	2,448	2,034	827	104	757	32,481
18	2,885	1,718	370	393	97	156	24	183	5,826
19 and over	294	375	67	118	12	62	12	15	955
<i>All ages</i>	<i>483,196</i>	<i>391,917</i>	<i>200,194</i>	<i>131,381</i>	<i>112,806</i>	<i>45,129</i>	<i>10,900</i>	<i>21,395</i>	<i>1,396,918</i>
<b>ALL STUDENTS</b>									
Under 6	82,652	65,978	20,595	21,286	9,628	7,643	3,064	3,965	214,811
6	81,141	68,881	36,914	22,498	21,196	7,491	2,311	3,802	244,234
7	81,650	67,419	36,535	21,628	20,803	7,309	2,218	3,777	241,339
8	79,544	65,806	35,856	22,384	20,930	7,278	2,181	3,622	237,601
9	81,870	67,021	36,701	22,812	21,053	7,804	2,019	3,715	242,995
10	85,656	68,187	38,729	23,558	21,518	8,136	1,985	3,695	251,464
11	87,868	69,834	39,309	24,147	22,299	8,306	1,853	3,770	257,386
12	89,250	68,923	39,865	24,053	21,949	8,524	1,728	3,883	258,175
13	88,332	69,673	39,503	24,551	21,966	8,716	1,661	3,575	257,977
14	84,894	66,550	38,106	24,152	20,842	8,290	1,275	3,309	247,418
15	72,188	57,410	27,010	19,902	15,817	7,100	998	2,943	203,368
16	45,702	41,678	14,562	13,136	9,171	3,510	635	2,205	130,599
17	27,688	22,005	7,093	5,645	4,562	1,676	234	1,571	70,474
18	7,471	4,584	1,069	1,274	342	409	58	490	15,697
19 and over	814	1,114	238	346	37	164	23	52	2,788
<i>All ages</i>	<i>996,720</i>	<i>805,063</i>	<i>412,085</i>	<i>271,372</i>	<i>232,113</i>	<i>92,356</i>	<i>22,243</i>	<i>44,374</i>	<i>2,876,326</i>

TABLE 16. - AGES OF STUDENTS, BY SEX, GOVERNMENT AND NON-GOVERNMENT SCHOOLS : AUSTRALIA, 1972 TO 1974

Age last birthday (years)	Male students			Female students			All students		
	1972	1973	1974	1972	1973	1974	1972	1973	1974
<b>GOVERNMENT SCHOOLS</b>									
Under 6	82,678	84,135	88,856	77,626	79,729	84,504	160,304	163,864	173,360
6	97,743	99,569	101,860	91,853	93,571	95,822	189,596	193,140	197,682
7	98,605	97,931	100,213	92,534	91,597	94,220	191,139	189,528	194,433
8	102,757	98,939	97,853	95,798	92,861	91,939	198,555	191,800	189,792
9	104,636	103,044	99,696	98,006	95,933	93,509	202,642	198,977	193,205
10	105,987	105,407	103,512	99,194	98,428	96,435	205,181	203,835	199,947
11	105,864	106,343	105,404	98,212	99,376	98,625	204,076	205,719	204,029
12	101,770	104,698	104,770	94,285	96,688	97,248	196,055	201,386	202,018
13	100,036	101,967	104,516	92,602	94,223	96,447	192,638	196,190	200,963
14	97,298	98,650	100,548	89,610	91,445	92,734	186,908	190,095	193,282
15	78,375	79,552	80,650	69,065	71,113	73,863	147,440	150,665	154,513
16	51,462	50,572	50,476	40,644	42,812	43,962	92,106	93,384	94,438
17	27,007	26,594	25,491	19,791	20,949	21,783	46,798	47,543	47,274
18	8,702	7,965	6,904	4,403	4,543	4,131	13,105	12,508	11,035
19 and over	1,601	1,454	1,246	507	554	628	2,108	2,008	1,874
All ages	(a)1,164,672	1,166,820	1,171,995	(a)1,064,269	1,073,822	1,085,850	(a)2,228,941	2,240,642	2,257,845
<b>NON-GOVERNMENT SCHOOLS</b>									
Under 6	20,225	20,191	20,436	20,496	20,192	21,015	40,721	40,383	41,451
6	23,043	23,036	23,161	23,277	23,209	23,391	46,320	46,245	46,552
7	24,291	23,357	23,353	24,295	23,684	23,553	48,586	47,041	46,906
8	24,878	24,194	23,844	25,163	24,442	23,965	50,041	48,636	47,809
9	25,478	25,219	24,776	25,996	25,582	25,014	51,474	50,801	49,790
10	25,970	25,378	25,630	26,619	25,984	25,887	52,589	51,362	51,517
11	26,630	26,380	26,351	27,233	27,253	27,006	53,863	53,633	53,357
12	26,566	27,698	27,494	28,129	28,817	28,663	54,695	56,515	56,157
13	25,995	26,727	27,921	27,529	27,978	29,093	53,524	54,705	57,014
14	25,346	25,439	26,311	26,954	27,103	27,825	52,300	52,542	54,136
15	22,974	23,609	23,688	23,946	24,592	25,167	46,920	48,201	48,855
16	17,342	17,994	18,392	16,415	17,148	17,769	33,757	35,142	36,161
17	11,889	11,931	12,502	9,507	10,001	10,698	21,396	21,932	23,200
18	3,074	3,070	2,967	1,694	1,749	1,695	4,768	4,819	4,662
19 and over	695	548	587	361	264	327	1,056	812	914
All ages	304,396	304,771	307,413	307,614	307,998	311,068	612,010	612,769	618,481
<b>ALL SCHOOLS</b>									
Under 6	102,903	104,326	109,292	98,122	99,921	105,519	201,025	204,247	214,811
6	120,786	122,605	125,021	115,130	116,780	119,213	235,916	239,385	244,234
7	122,896	121,288	123,566	116,829	115,281	117,773	239,725	236,569	241,339
8	127,635	123,133	121,697	120,961	117,303	115,904	248,596	240,436	237,601
9	130,114	128,263	124,472	124,002	121,515	118,523	254,116	249,778	242,995
10	131,957	130,785	129,142	125,813	124,412	122,322	257,770	255,197	251,464
11	132,494	132,723	131,755	125,445	126,629	125,631	257,939	259,352	257,386
12	128,336	132,396	132,264	122,414	125,505	125,911	250,750	257,901	258,175
13	126,031	128,694	132,437	120,131	122,201	125,540	246,162	250,895	257,977
14	122,644	124,089	126,859	116,564	118,548	120,559	239,208	242,637	247,418
15	101,349	103,161	104,338	93,011	95,705	99,030	194,360	198,866	203,368
16	68,804	68,566	68,868	57,059	59,960	61,731	125,863	128,526	130,599
17	38,896	38,525	37,993	29,298	30,950	32,481	68,194	69,475	70,474
18	11,776	11,035	9,871	6,097	6,292	5,826	17,873	17,327	15,697
19 and over	2,296	2,002	1,833	868	818	955	3,164	2,820	2,788
All ages	(a)1,469,068	1,471,591	1,479,408	(a)1,371,883	1,381,820	1,396,918	(a)2,840,951	2,853,411	2,876,326

(a) Includes 290 primary students (151 males, 139 females) in South Australia in 1972 whose ages are not known.

**J. G. MILLER**  
Acting Commonwealth Statistician

Australian Bureau of Statistics,  
Canberra, A.C.T. 2600

NOTE. Inquiries concerning these statistics may be made in Canberra by telephoning Mr L. Kupkee on 63 9111 extension 2268, or in each State capital, by telephoning the office of the Australian Bureau of Statistics.