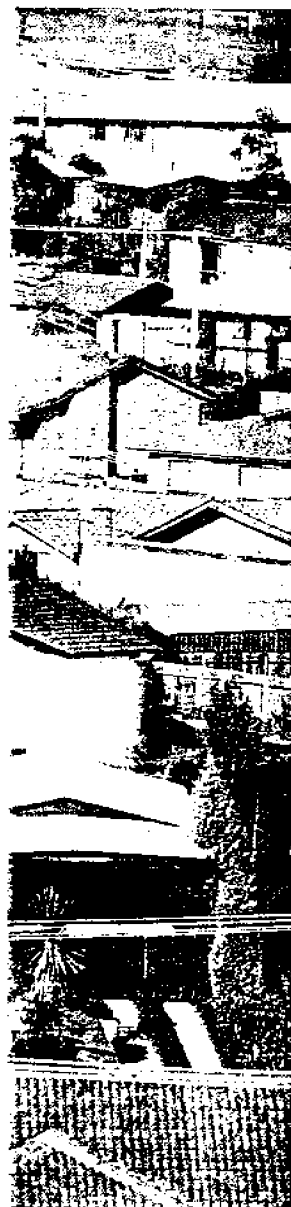




1996 CENSUS OF POPULATION & HOUSING:

ABS VIEWS ON CENSUS PRODUCTS AND SERVICES





1996 CENSUS OF POPULATION AND HOUSING
ABS VIEWS ON CENSUS PRODUCTS AND SERVICES

W. McLennan
Australian Statistician

© Commonwealth of Australia 1995

Produced by the Australian Government Publishing Service

CONTENTS

	Page
1. Aims of this paper	1
2. Results of consultation	1
3. 1996 Census products and services	2
4. Census reference products	3
4.1 Census dictionary	3
4.2 Geographic classifications and codes	3
4.2.1 Volume 1: Australian Standard Geographical Classification (ASGC)	3
4.2.2 Volume 2: Census Geographic Areas	4
4.2.3 Volume 3: ASGC Urban Centres/Localities	4
5. Census information papers	5
5.1 Census methodology	5
5.2 Newsletter	5
5.3 Data directory	5
5.4 Census fact sheets	5
5.5 Census evaluation papers	6
5.6 Census undercount	6
6. Maps and map data	7
6.1 Collection district maps	7
6.2 Condensed maps	7
6.3 Digital boundaries	7

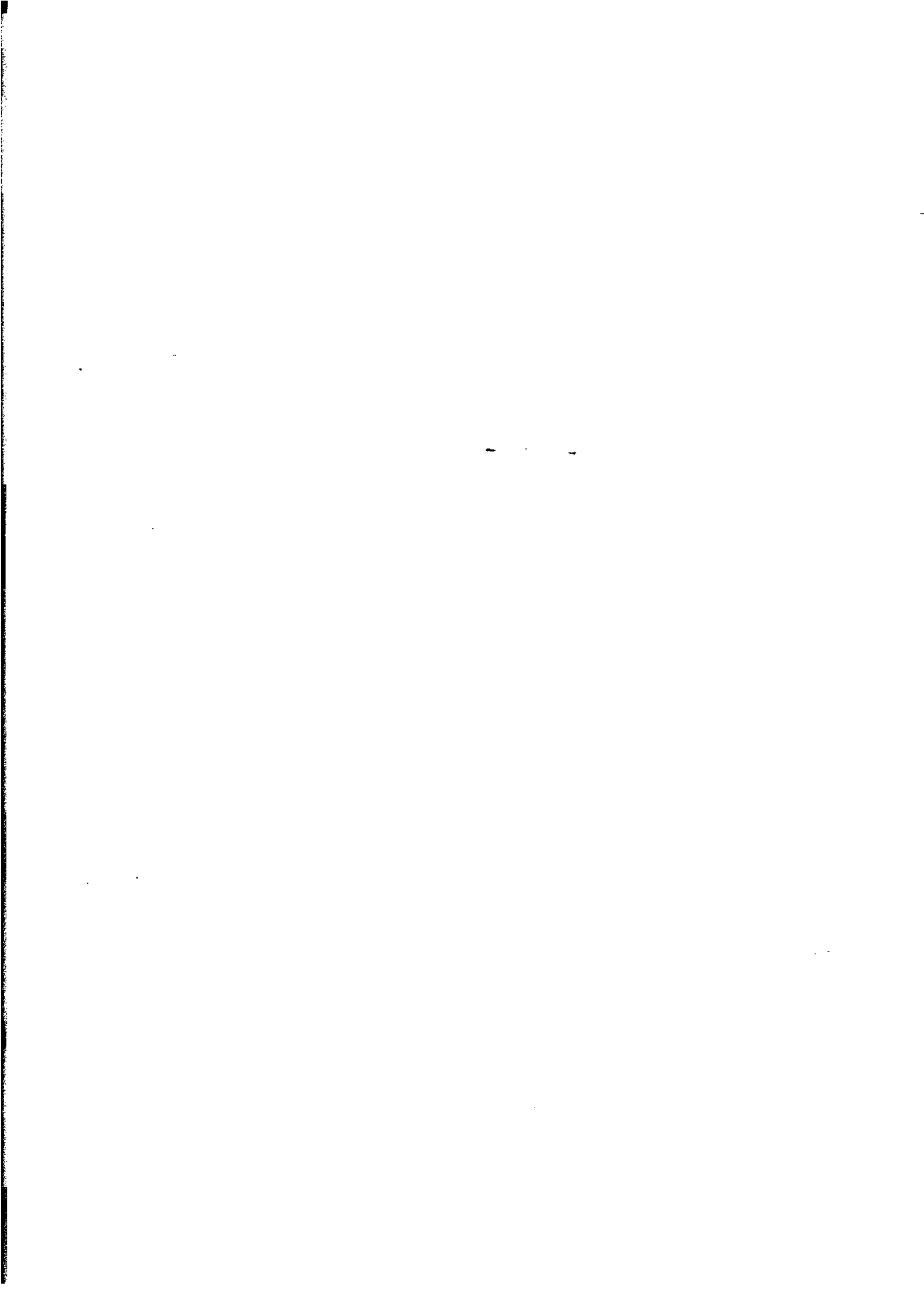
INQUIRIES *For information about ABS statistics and services, please refer to the back page of this publication.*

CONTENTS — continued

	Page
7. Statistical publications	9
7.1 Estimated resident population publications	9
7.1.1 Australian Demographic Statistics — 1996 Census Edition, December quarter 1996	9
7.1.2 Regional Population Estimates — 1996 Census Edition, June 1991 and June 1996	10
7.1.3 Regional Population Estimates — 1996 Census Edition, June 1991 and June 1996 on floppy disk	10
7.2 First release publications	10
7.2.1 Selected Characteristics of Persons and Dwellings from 1996 First Release Census Data — Statistical Local Areas	10
7.2.2 Selected Characteristics of Persons and Dwellings from 1996 First Release Census Data — Urban Centres/Localities	11
7.2.3 Australia's Indigenous Community Counts	11
7.3 Second release publications	11
7.3.1 Selected Characteristics of Persons and Dwellings from 1996 Second Release Census Data — Statistical Local Areas	11
7.3.2 Australia's Indigenous People	12
8. Thematic publications	13
8.1 Regional analysis	13
8.2 Population growth and distribution	13
8.3 Social atlas series (capital cities)	13
9. Profile series and classification Counts	14
9.1 Community profile series	14
9.2 Classification counts	15
9.3 Thematic profile series	15
10. CDATA and other mapping products	16
10.1 CDATA96	16
10.2 CDATA96 data modules	16
10.3 Other mapping products	16
11. Other Products	17
11.1 Census household sample file	17
11.2 Socio-Economic Indexes for Areas (SEIFA)	17

CONTENTS — *continued*

	Page
12. State products	18
12.1 South Australia	18
12.1.1 Topic Cameo Series	18
12.2.2 South Australia in Profile	18
12.2 Western Australia	18
12.2.1 Counts of Population and Dwelling Characteristics by Postcode and Suburb — WA	18
12.3 Tasmania	18
12.3.1 Tasmanian LGAs	18
12.4 Northern Territory	18
12.4.1 Counts by Age and Sex for Selected Areas	18
13. Census consultancy services	19
13.1 Customised matrixes	19
13.2 Customised profiles	19
13.3 Customised geographic data	20
13.4 Customised map service	20
 Appendix	
First and second release classifications	21



1. AIMS OF THIS PAPER

The aims of this paper are to:

- inform Census users of the results of the consultations on the 1996 Census output program and the classifications to be used for the 1996 Census;
- provide information on the proposed products and services for the 1996 Census; and
- seek user views on the proposals.

2. RESULTS OF CONSULTATION

Users were asked in November 1994 to comment on the proposed range of products and services and the method of confidentialising census output.

About a thousand users responded to the survey. In general there was overwhelming support for the strategies proposed to achieve the goal of timely and predictable release of 1996 census data. Over ninety per cent of respondents were in favour of the two phase release of census data and saw it as a significant improvement over the 1991 Census. A few reservations on the strategy were expressed by those requiring data which will not be available as part of the proposed first release of census data.

There was also general support for the rationalisation of data content, although there were major reservations expressed that extra costs would be incurred by users of the data that would not be included in the standard products. The intention of the ABS to use new technologies for 1996 Census customised services will make these services faster and cheaper.

The proposed 1996 Census product range also received general endorsement.

Users, after their experience with random perturbation of 1991 census cells, expressed concerns about the likely affect of this methodology on 1996 Census results. Users indicated that to avoid confusion, there should be only one statistic for an individual characteristic at each geographic level, that components of a table add to a total and that the perturbed figures were as close as possible to the actual data.

In response to these concerns the ABS has decided that each geographic level will be separately aggregated and perturbed rather than perturbing at the lowest level and aggregating these data through higher levels of aggregation. This means that the perturbed figures for each geographic level will be close to the actual figure but there will be a consequent loss of additivity through the geographic levels.

Users were informed in February 1995 of the detailed contents of the classifications to be utilised for 1996 Census Output.

While there was overall support for the proposals users indicated a number of specific concerns:

- There was disagreement with the proposal to collapse the constituent countries of the United Kingdom within the Birthplace classification. Accordingly the ABS has agreed to retain each country in the classification.
- Suggestions have been made for additional categories in the Language and Religion classifications. The possibility of including these suggestions is still under consideration.
- Similarly there were suggestions for including additional categories in the Occupation and Qualifications classifications and for some restructuring of the major and minor occupational groups. Once again these are being considered for incorporation.

3. 1996 CENSUS PRODUCTS AND SERVICES

The proposed 1996 Census products and services are outlined in the following sections. Users should note that the release dates, as shown, are indicative only and are subject to change. The ABS intends to advise users of the firm release dates in the first release of *Census Update* in 1997.

The ABS would like to hear user views about the proposed products and services. The enclosed questionnaire has been drawn up for this purpose.

The ABS will continue to provide results of the Census, free of charge, for community access. This will be done in a number of ways:

- Key results of the Census will be made available to the media free of charge;
- Libraries in the ABS Library Extension Program (LEP) which covers the State libraries, the major regional public libraries and university libraries, will continue to receive a wide range of Census data;
- In addition to the printed statistical publications, the ABS will again provide detailed Census data in a CD-ROM product, CLIB, first developed for the 1991 Census. This product contains software which allows the included Census data to be selected, viewed, aggregated and printed. The first release of CLIB96, containing first release Basic Community Profile (BCP) data will be issued in December 1997. The second release containing second release BCP data and the remaining Community Profiles (Expanded, Time Series, Usual Residence, Indigenous and Working Population) will be issued in March 1999; and
- Members of Parliament will continue to receive key results of the Census free of charge.

This is the last of the series of user consultations on various aspects of the 1996 Census. Users interested in the details of previous consultations may wish to consult the following publications:

- *1996 Census of Population and Housing: Nature and Content of the Census* (ABS Catalogue No. 2008.0) which contains information on topics to be included in the 1996 Census.
- *1996 Census of Population and Housing: ABS Views on Census Output* (ABS Catalogue No. 2009.0) which sets out the goals for 1996 Census output, the strategies to achieve them and the proposed range of products and services.
- *1996 Census of Population and Housing: ABS Views on Census Classifications* (ABS Catalogue No. 2012.0) which contains the proposed classifications for 1996 Census output.

4. CENSUS REFERENCE PRODUCTS

4.1 Census dictionary

The *1996 Census Dictionary* is designed to assist users in understanding the Census data available from the ABS and, where appropriate, in specifying their customised data requests. It will provide comprehensive definitions of the terms and concepts and list all classifications used for Census output, showing all categories available for each classification. This new publication replaces both the *1991 Census Directory of Classifications* (2904.0) and the *1991 Census Dictionary* (2901.0).

This publication will be available prior to the release of Census data so that users are able to plan their standard and customised data requests, for example, customised matrixes. Addenda will be issued to notify users of any changes, which will also be published in *Census Update*, a free newsletter produced by the ABS to inform users about the Census.

Both hard copy (publication) and electronic formats of this publication will be available for the 1996 Census. Electronic formats will include text files and Windows Help files.

Indicative release date: July 1996

4.2 Geographic classifications and codes

Names and codes of the geographic areas used in the 1996 Census will be published in three volumes:

Volume 1: Australian Standard Geographical Classification (ASGC) effective date 1 July 1996

Volume 2: Census Geographic Areas

Volume 3: ASGC Urban Centres/Localities

All three volumes will contain explanatory notes about the classification and definitions of the areas used in the Census. The second volume will also include explanations of user-defined areas from which Census data can be provided, for example, areas defined by radial selection.

Census geography is based on the Census Collection District (CD). The CD is the smallest unit for which data are disseminated. All ASGC units current at the time of the Census are created from aggregations of CDs. (Aggregation is the process of combining one or more spatial units to form another larger unit, which is further up in the ASGC hierarchy.)

The information contained in these publications will also be available in electronic format.

4.2.1 *Volume 1: Australian Standard Geographical Classification (ASGC)*

This publication will list all the ASGC structures effective from 1 July 1996 and will show the hierarchical relationships between them. It will also include information about specific changes to geographic areas between censuses.

The following geographic areas will be covered in this publication:

Collection District	CD
Statistical Local Area	SLA
Local Government Area	LGA
Statistical Subdivision	SSD
Statistical Division	SD
Statistical District	SDIST
Statistical Region Sector	SRS
Statistical Region	SR
Major Statistical Region	MSR
Section of State	SOS
State/Territory	STE

Indicative release date: Late 1996

4.2.2 *Volume 2: Census Geographic Areas*

This publication will list the names and codes for the standard Census output areas that are not part of the ASGC.

Many of the geographic areas included in this publication are not defined by the ABS. To enable the ABS to produce statistics based on these areas they are reproduced by aggregating CDs that best fit the original area. Due to this approach the reproduced area may not conform exactly to the original area. Geographic areas produced by this method are described as CD-derived. An example of this is CD-derived Commonwealth electoral divisions. These areas are constructed using those CDs that best match the areas defined by the Australian Electoral Commission. Differences between the two areas occur because Commonwealth electoral divisions may not be based on CDs.

For the 1996 Census the standard CD-derived areas will be:

- Commonwealth Electoral Divisions
- State Electoral Divisions
- Suburbs (where applicable)
- Journey to Work Study Areas
- ATSIC Regions
- Indigenous Location (approximately 80+ Indigenous persons)
- Indigenous Area (approximately 300+ Indigenous persons)

Indicative release date: Early 1997

4.2.3 *Volume 3: ASGC Urban Centres/Localities*

This publication will list the names and codes of the Urban Centres and Localities (UCLs) that are defined in accordance with the ASGC, using the person counts collected by the Census. As the set of UCLs in this publication will be defined using counts from the 1996 Census it will not be available until late 1997, when classification of these areas is anticipated to be finalised.

Indicative release date: Late 1997

5. CENSUS INFORMATION PAPERS

For the 1996 Census a series of fact sheets and evaluation papers will be produced on a needs basis. The results or findings from the fact sheets or evaluation papers will generally be published in the Census newsletter, *Census Update*. Users will also be able to request free copies of *Census Update* from ABS Client Services.

5.1 Census methodology

The publication *How Australia Takes a Census* takes a look at the history of the Census, the planning process and the way in which the Census is conducted. It describes how the content is determined, the methods used to collect the data and how this information is processed, evaluated and published.

Indicative release date: Mid-1996

5.2 Newsletter

Census Update is a free newsletter distributed to interested Census users. It is published several times a year and includes information about product releases, case studies of Census data usage and details of the features of some of the popular electronic data products.

Indicative release date: Irregular

5.3 Data directory

The *1996 Directory of Census Statistics* will provide users with information on the products and services to be available from the 1996 Census. It will contain a summary of the broad range of publications, electronic products, maps and consultancy services available from the 1996 Census. A brief description of each product or service will be provided, as well as details of geographic coverage, price, availability by medium and ordering information.

Indicative release date: First issue mid-1996, last issue late 1998

5.4 Census fact sheets

Fact sheets will be published on a needs basis in response to issues that arise during and after the publication of Census data. Examples of facts sheets expected to be produced are as follows:

- 1996 and 1991 Census Mnemonics
- Changes to variables: 1991 to 1996
- Descriptions of geographic areas
- Changes to geographic areas between censuses
- Confidentiality in output

Indicative release date: Irregular

5.5 Census evaluation papers

A series of working papers will be produced to assess and report on various aspects of 1996 Census data quality. Several Census topics will be examined in detail and the impact of form design, collection procedures and data processing on data quality will be evaluated. The format of the papers and the topics covered are expected to be similar to the post-1991 Census series which included papers on the following topics:

Aboriginal and Torres Strait Islander counts
Labour Force Status
Education
Housing

Indicative release date: Irregular

In addition to these, three publications evaluating different aspects of the 1996 Census will be produced under the Portfolio Evaluation Program. These are as follows:

Evaluation of the planning and collection phases:	To be published mid-1997
Evaluation of the processing phase:	To be published mid-1998
Evaluation of the output and dissemination phase:	To be published end-1999

5.6 Census undercount

The publication *1996 Census Undercount* will be produced on estimates of persons and dwellings missed in the Census, based on results from the Post Enumeration Survey. Undercount will be examined by a range of demographic characteristics, by State/Territory and by capital city/rest of State.

Indicative release date: Early 1998

6. MAPS AND MAP DATA

Maps of CDs and SLAs will be available for purchase to enable users to relate statistical data to the geographical area of interest. Individual maps and bound sets of these maps will be available through an ordering service. The ABS has set a target for most orders of maps to be ready for distribution within seventy-two hours of receipt of the order. Large orders will take additional time to fulfil. ABS bookshops will also keep limited stocks of popular maps for sale over the counter to those customers requiring only a small number of maps.

Digital Boundary and Base Map data will be used to produce these hard copy maps, resulting in maps of much higher quality than previously produced.

The ABS will continue to offer a customised mapping service for production of reference maps. These maps can include any of the boundaries from the full range of Census boundaries.

6.1 Collection district maps

Maps of individual Collection District will be available on A4 and A3 size sheets, depending on the size and detail of the CD. These maps will be used by the Census collectors to locate the dwellings and persons in their CD. They show the CD boundaries as well as identifying topographical features within the CD, for example, roads, bridges, waterways, parks and some public buildings.

Indicative release date: Late 1996

6.2 Condensed maps

The ABS also plans to produce a set of hard copy Condensed maps on A3 sheets. These maps will show CD boundaries within a Statistical Local Area (SLA) and will provide slightly less topographical detail than is shown on the Collection District maps. For some maps insets will be supplied, showing enlargements of the more densely populated areas.

Indicative release date: Late 1996

6.3 Digital boundaries

Digital Boundaries will be produced for use in both desktop mapping packages and Geographic Information Systems (GIS). Their use in these systems allows a range of uses from the production of simple reference maps, to complex spatial data analysis drawing information from a number of sources.

Digital Boundaries for the 1996 Census were created using the ABS' own digital mapping system which incorporated Digital Base Map data supplied by the Public Sector Mapping Authorities. The boundaries were created using the feature included in this base map and through design work done by ABS staff using the digital mapping system.

Digital Boundaries will be available in three forms, All Points, Reduced and Shapes.

The All Points set will provide boundaries at the finest level of detail produced by the ABS.

The Reduced set is not as detailed as the All Points set and the files they are stored in are substantially smaller and require less computing power to manipulate. The Reduced set of boundaries is created from the All Point through a process called filtering. The filtering process removes some of the geographic detail in the boundaries and in doing so reduces the size of the files containing the data. This allows them to be more effectively used with desktop mapping software.

The Shapes set is of less detail than the Reduced set and subsequently the files are stored in smaller files again than the Reduced set. This set will contain rough shapes of the boundaries for use in computing software such as spreadsheet packages with mapping capabilities.

Digital Boundaries will only perfectly overlay the digital base map on which they have been prepared. Users wanting to overlay ABS Digital Boundaries on their own digital base map data may need to adjust the boundaries to accomplish a perfect fit. There will be some inconsistencies between the Shapes set of boundaries and the base map data which matches both the All Points and Reduced sets due to the extensive filtering required to produce the Shapes set of boundaries.

For each of the sets of boundaries described above, users will be able to choose from the geographic levels shown below. In most cases these sets will be available at either the State or Territory level, or for the whole of Australia. A customised service will be available to users who wish to purchase the boundaries that cover geographic areas smaller than these levels.

- Collection District
- Statistical Local Area
- Local Government Area
- Statistical Division
- Statistical Subdivision
- Statistical District
- Statistical Region
- Urban Centre Locality
- Suburb (where applicable)
- Postal Area
- Commonwealth Electoral Division
- State Electoral District/Division
- ATSIC Regions
- Indigenous Location (approximately 80+ Indigenous persons)
- Indigenous Area (approximately 300+ Indigenous persons)

1996 Census Digital Boundaries are expected to be made available in most common industry formats. To achieve this the ABS intends to issue non-exclusive licences to a number of external suppliers with expertise in particular formats. Clients wanting Digital Boundaries will be provided with the contact details of all ABS-appointed distributors and the formats they offer.

The 1996 Census Digital Boundaries are being developed to fit base map data provided under an agreement between the ABS and the Public Sector Mapping Agencies (PSMA).

Detailed base map data from the PSMA will be available for integration with users files. As part of the ABS' arrangement with the licensed providers of Digital Boundaries (described above), the licensees may adjust the ABS boundaries to fit their own base map data and supply the integrated map data with their licensed formats.

Digital base map data will also be available in All points or Reduced points datasets, for customised areas, individual States or the whole of Australia.

Indicative release date: Progressively from late 1996

7. STATISTICAL PUBLICATIONS

Census publications provide easily accessible and basic Census information to many users. There will be two types of publication available from the 1996 Census -- statistical publications and thematic publications. Statistical publications contain mainly data with a minimum of descriptive commentary about the statistics presented. Thematic publications, as the name suggests, present a series of data on a particular theme with a substantial amount of analysis and commentary on the data presented. The thematic publications planned for the 1996 Census are discussed in detail at Section 8 of this information paper.

As discussed at Section 3 of this information paper, there will be two releases of data from the 1996 Census. The majority of census topics, being easy to process, will be included in the First Release. Those topics which require more complex processing will not be available until the Second Release. Users should be aware that some statistical publications will be based on First Release data, while others will include the full range of data available after the Second Release.

Several of the statistical publications listed below will be presented in formats significantly different from earlier censuses, mainly because of the availability of First Release data. The first publications released from earlier censuses have traditionally contained age and sex counts for Statistical Local Areas (SLAs).

Feedback from users indicate that there is confusion over the three different person counts provided by the ABS, that is, the Estimated Resident Population (ERP), and the As Enumerated and Usual Residence Census counts. To ease this confusion it is intended to release ERP, based on the results of the 1996 Census by age and sex for SLAs at approximately the same time as the first Census publication which will be based on As Enumerated data. In addition it is intended that the Census publications will shift their emphasis from Census counts to detailed Census characteristics that are not available from the ERP, making the combined initial release of data quite extensive.

A 1996 Census equivalent to the 1991 Census Characteristics publication will not be produced. The 1991 publication contained a subset of the tables from the 1991 Census Community Profiles series. 1996 Census Basic Community Profile tables will be included in the First and Second Release publications. Other tables, specific to client requirements, will be available through Census Consultancy Services.

7.1 Estimated resident population publications

Three publications containing Estimated Resident Population (ERP) data will be released. These data are derived from the 1996 Census counts by applying the following adjustments:

- remove overseas visitors who were in Australia on Census night from the Census counts;
- adjust the Census counts for undercounting using results of the Post Enumeration Survey;
- include Australian residents who were temporarily absent overseas on Census night; and
- backcast the resulting estimates which relate to 6 August 1996 to 30 June 1996 using births, deaths and migration data.

7.1.1 *Australian Demographic Statistics -- 1996 Census Edition, December Quarter 1996*

This publication will provide preliminary State and Territory ERP by five year age group and sex as at 31 December 1996 based on the 1996 Census. It will also include time series ERPs of the States and Territories of Australia, along with time series data for births, deaths, infant deaths, marriages, divorces, and interstate and overseas movements.

Indicative release date: June 1997

7.1.2 Regional Population Estimates — 1996 Census Edition, June 1991 and June 1996

This publication will provide the preliminary ERP person totals at the SLA level for all of Australia at 30 June 1996 based on the 1996 Census. Estimates of the population at 30 June 1991 for the same geographic areas and growth between 1991 and 1996 will also be included. Disaggregations of these June 1996 SLA estimates by age and sex will be published separately in a series of publications for each State and Territory, and will also be available on floppy disk (see 7.1.3 below).

Indicative release date: July 1997

7.1.3 Regional Population Estimates — 1996 Census Edition, June 1991 and June 1996 on Floppy Disk

Preliminary ERP by age (in 5 year age groups to 85) and sex at the SLA level for all of Australia for each year from June 1991 to June 1996 inclusive will be available on floppy disk. These data will also be available on a specially formatted floppy disk which can be interfaced with CDATE96 (see 10.1). In addition, the age data for the June 1996 and June 1991 ERPs will be available at single years.

Indicative release date: July 1997

7.2 First release publications

7.2.1 Selected Characteristics of Persons and Dwellings from 1996 First Release Census Data — Statistical Local Areas

This set of publications will be the first available from the 1996 Census and will include selected characteristics of persons and dwellings using First Release data. There will be a separate publication for each State/Territory and Australia.

The State/Territory publications will provide data for the Australian Standard Geographical Classification (ASGC) areas of Statistical Division (SD), Statistical Subdivision (SSD) and Statistical Local Area (SLA). Furthermore, a selection of variables, such as median income and population count, will be used to rank SLAs according to the level of each characteristic, providing users with information on the relative position of SLAs in terms of the selected variables. In addition to the inclusion of State or Territory level Basic Community Profile tables containing First Release Census data, the publication will provide 1991 Census data at the geographic level of SSD and SD for comparison.

The Australia publication will provide data similar to the State/Territory publications but the data will be at the State/Territory, SD and SSD level. First Release Basic Community Profile tables will be included at the Australia level. The publication will also provide 1991 Census data at the geographic level of SD and State/Territory for comparison.

Maps will be included in these publications.

Indicative release date: July 1997

7.2.2 Selected Characteristics of Persons and Dwellings from 1996 First Release Census Data — Urban Centres/Localities

This set of publications will incorporate a range of data for the Urban Centres and (Rural) Localities (UCL) and Section of State (SOS) classifications, prepared after Census data have been released. The publications will include a number of tables. The first two tables contain person counts by age and selected characteristics of dwellings, taken from First Release data, for each UCL in the State/Territory. A third table showing each UCL ranked by population will also be provided. There will also be a fourth table containing selected counts of persons and dwellings for the ASGC classification of Section of State.

The set will include a separate publication for each State/Territory but no publication for the whole of Australia. An Australia-wide publication will not be produced as there is no national equivalent in the Urban Centre/Locality geographic classification structure. The publications will not include Basic Community Profiles as they would have already been provided in *Selected Characteristics of Persons and Dwelling from 1996 First Release Census Data — Statistical Local Areas*.

Indicative release date: January 1998

7.2.3 Australia's Indigenous Community Counts

This publication will contain 1996 Census counts of the Indigenous population for all Indigenous locations and at the State, Territory and Australia level. A table of the Estimated Resident Indigenous population by State and Territory will also be included. Data from the 1991 Census will be included for comparison.

Indicative release dates: July 1997

7.3 Second release publications

7.3.1 Selected Characteristics of Persons and Dwellings from 1996 Second Release Census Data — Statistical Local Areas

This set of publications will include selected additional characteristics that become available after the Second Release of 1996 Census data. There will be a separate publication for each State/Territory and Australia.

The State/Territory publications will include data for the Australian Standard Geographical Classification (ASGC) areas of Statistical Division (SD), Statistical Subdivision (SSD) and Statistical Local Area (SLA). Data from the 1991 Census will be included for comparison at the geographic level of SSD and SD. These publications will also include State or Territory level Basic Community Profile tables containing Second Release Census Data.

The Australia publication will contain similar Second Release characteristics for ASGC areas of State/Territory, SD and SSD. Second Release Basic Community Profile Tables will be included at the Australia level. The Australia publication will contain an additional table listing all Urban Centres and Localities of 1,000 or more persons in Australia ranked by total number of persons.

Tables showing rankings of SLAs or SSDs based on selected census characteristics will also be included in this set of publications.

Indicative release date: March 1998

7.3.2 *Australia's Indigenous People*

This series of publications will be published for Australia, and for each of its States and Territories and will contain data on Indigenous people on a variety of topics including: population growth and distribution; families and housing; education; employment; income and language. In the publication for Australia selected data from previous censuses will be included for comparison as will some data for State/Territory and ATSI Region.

Indicative release date: From early 1998

8. THEMATIC PUBLICATIONS

8.1 Regional analysis

The publication *Australia in Profile - A Regional Analysis* will present commentary and data on a number of key social indicators from the Census with the focus on regional distribution and comparisons. Topics covered will include cultural diversity, living arrangements, education, work and housing. The publication will also include ranking tables, maps and graphs and is designed for the general user of Census data.

Indicative release date: Late 1998

8.2 Population growth and distribution

The publication *Population Growth and Distribution in Australia* examines the demographic changes that have taken place in Australia to 1996. It focuses on the growth, location and mobility of the population at the national, State and regional levels. Information is presented on the characteristics and volume of interstate and intrastate movements which occurred between 1991 and 1996, including a comparison of the relative contribution of interstate and intrastate migration to population growth for selected regions throughout Australia.

Indicative release date: Late 1998

8.3 Social atlas series (capital cities)

The Social Atlas series present colour maps of the key social, demographic and economic characteristics of the urban centres of each capital city. The maps are easy to interpret as the distribution of the data is represented by different colours or shadings. A brief commentary explaining the main features and characteristics also accompanies each map.

The Social Atlas series has a common core set of maps including population, ethnicity, education, families, income, labour force and dwellings. Each Social Atlas also includes maps that highlight any unique attributes pertaining to that particular capital city.

The Social Atlas series will be published in A4 format. The maps will be produced using CD as the mapping unit. A set of overlays for CD-derived postcodes, suburbs, LGAs, SLAs together with information on these other units will be available optionally.

Indicative release date: From mid-1998

9. PROFILE SERIES AND CLASSIFICATION COUNTS

9.1 Community profile series

The 1996 Community Profile series will comprise key Census data for all geographic areas, from Collection Districts (CDs) to total Australia.

Each Community Profile is a set of tables containing key Census characteristics of persons, families and dwellings covering most topics on the Census Form.

Response from users in the recent consultation process has indicated that the 1991 Community Profile format and data content were acceptable to the majority of users. It is therefore proposed that the 1996 Community Profile series will be similar in both content and format to the 1991 Community Profiles. Only the Basic Community Profile will have a reduced data content which has been determined in consultation with users. The series comprise:

- **Basic Community Profile** — will contain approximately 25 tables for all Census areas from CD to total Australia, including CD-derived postcodes. The Basic Community Profile (BCP), the first of the profiles to be produced, will be issued in two releases. The first release will contain data available from first release processing. The second release of the BCP will contain the remaining data and will have a staged release for each State and Territory. A complete list of first and second release variables is shown in the Appendix to this publication.
- **Summary Indigenous Profile** — will contain an age-sex table and frequency count table which will be available for Indigenous Locations (around 80 or more Indigenous people), Indigenous Areas (around 300 or more Indigenous people), ATSI Regions and States and Territories, providing complete coverage of Australia. The Summary Indigenous Profile will be released in two stages. First release will contain the age-sex table and frequency counts from first release variables. Second release will contain an additional table of frequency counts for selected second release variables.
- **Detailed Indigenous Profile** — will contain tables similar to the 1991 series and will be available for Indigenous Areas (around 300 or more Indigenous people), ATSI Regions and States and Territories. Some time series information may also be included for basic characteristics such as age, sex, language and structure of dwelling.
- **Times Series Community Profile** — will contain approximately 22 tables from the Basic and Expanded Profiles comprising data from the 1986, 1991 and 1996 Censuses where the classifications are comparable. It will be available for SLAs, Local Government Areas, Statistical Divisions, Statistical Subdivisions, Statistical Regions, Statistical Districts and States/Territories.
- **Usual Residents Community Profile** — will contain approximately 25 tables based on the usual residents of SLAs and aggregates of SLAs.
- **Expanded Community Profile** — will contain approximately 40 tables and will be available for Statistical Local Areas (SLAs), Local Government Areas, Statistical Divisions, Statistical Subdivisions, Statistical Regions, Statistical Districts and States/Territories. It will comprise more detailed versions of some Basic Community Profile tables plus new tables.
- **Working Population Community Profile** — will contain approximately 17 tables of labour force and related data on the characteristics of people who work in SLAs within the journey to work study areas, usually capital cities.

Community Profile series will be available in hardcopy or electronic format. Electronic versions of the 1991 Community Profiles were provided with free CPROFILE software, which enabled clients to view, select and print selections from the Community Profiles. It is anticipated that 1996 Census Profiles will be available in formats suitable for a range of spreadsheets and databases. The manipulation software, operating in a Windows environment, will be enhanced and continue to be available free of charge.

Indicative release dates:

Basic Community Profile Release 1	July 1997
Basic Community Profile Release 2	Progressively to early 1998
Other Profiles	Progressively to end 1998

Profiles are expected to be released in the following order:

- Basic Community Profile Release 1
- Summary Indigenous Profile Release 1
- Basic Community Profile Release 2
- Summary Indigenous Profile Release 2
- Detailed Indigenous Profile
- Time Series Community Profile
- Usual Residents Community Profile
- Expanded Community Profile
- Working Population Community Profile

9.2 Classification counts

Classification Counts, known as the Comparison Series in the 1991 Census, will provide frequency counts by sex where applicable for 1996 Census variables in full classificatory detail. In its complete form, Classification Counts will be available for each State or Capital City Statistical Division, for comparison purposes. The 1991 Census product also provided counts for Statistical Regions. Due to the low demand for this geographic area, it is not intended to provide this product at the Statistical Region level for the 1996 Census.

Indicative release dates:

Release 1	September 1997
Release 2	May 1998

9.3 Thematic profile series

The ABS is considering producing a range of profiles similar in concept to the Community Profiles (a series of standard tables for Statistical Local Areas) but covering particular themes or topics. Under consideration are an Ethnicity Profile covering the topics of Birthplace, Language and Religion, an Older Persons Profile, a Family Profile and a Youth Profile. Users' views are sought on whether these profiles would be useful and on any other topics that should be considered.

10. CDATA AND OTHER MAPPING PRODUCTS

10.1 CDATA96

CDATA96, on CD-ROM, will contain Community Profile data for a wide range of geographic areas combined with sophisticated mapping and data manipulation software. It will be available for individual States/Territories and Australia.

CDATA96 will be released in September 1997. The following provides details of data content:

- Basic Community Profile, first release data (at Collection District level and above)
- 1996 Digital Statistical Boundaries
- Digital Base Map Data
- 1986 and 1991 Census data (at SLA level on 1996 boundaries)
- Full software functionality

In addition, all CDATA96 purchasers will receive the following additional profile and boundary data when they become available:

- Basic Community Profile, second release data (at Collection District level and above)
- Time Series Profile (at SLA level)
- Additional boundary data (UC/L and SED/CEDs)
- Interface for all other Community Profiles

Indicative release date of additional data is June 1998.

10.2 CDATA96 data modules

All other Community Profiles (refer Section 9) can be optionally purchased separately on floppy disk by clients who wish to import them into CDATA96 and take full advantage of CDATA functionality. An interface will be available on CDATA96 to ensure that all other profiles (for example, Working Population, Usual Residents etc.) can be presented, manipulated and mapped in the same way as the Basic and Time Series Profiles on the standard CDATA product.

Other ABS datasets such as Estimated Resident Population will also be available in formats suitable for use within CDATA96.

10.3 Other mapping products

Two major spreadsheet packages, Excel and Lotus 1-2-3, have recently incorporated 'thematic mapping'/'data visualisation' tools into their software, making the process of mapping data as simple as charting data. The availability of these tools brings the ability to map data to many more PC users.

The ABS is looking into the feasibility of developing complementary products for Census users who want to use such spreadsheets to analyse and map Census data. These products will be in the form of appropriately formatted data and boundary packages which can be installed directly into these spreadsheets.

11. OTHER PRODUCTS

11.1 Census household sample file

The 1996 Census Household Sample File (HSF) will be a comprehensive unit record database of Census characteristics, containing a random sample of private households and associated persons and persons in non-private dwellings. It will be designed and produced after consultation with major clients of this file. It is expected that the structure of the file will be similar to that of the 1991 HSF, though it may be modified according to user's requirements.

The 1991 HSF contained a one per cent sample of private households and associated persons and a one per cent sample of persons in non-private dwellings. Most of the classificatory details available from the Census were available on the HSF, though some fields, such as birthplace, industry, occupation and qualification were collapsed to less detailed levels.

Indicative release date: Mid-1998

11.2 Socio-Economic Indexes for Areas (SEIFA)

Socio-Economic Indexes for Areas (SEIFA) are lifestyle groupings of Australia's communities. For the 1991 Census there were five indexes which group Australians according to their social and economic conditions.

The five indexes were:

- Urban index of Advantage
- Rural index of Advantage
- Index of Disadvantage
- Index of Economic Resources
- Index of Education and Occupation

These indexes reveal where the affluent (as opposed to just high income earning) live, where the disadvantaged (as opposed to the unemployed) live and where the highly skilled and educated (as opposed to the degree-holding people) live.

SEIFA will provide information and rankings for a wide range of geographic areas from small areas such as a collection district (of a few suburban streets), postcodes, Local Government Areas, and Statistical Local Areas, to large areas such as Statistical Subdivisions. Alternatively, users will be able to tailor areas to their own specifications.

SEIFA will be available as a stand alone product or as an add-on module for use with CDATA. The indexes will be constructed in a similar way to their construction for the 1991 Census.

Indicative release date: September 1998

12. STATE PRODUCTS

All standard Census products listed above will include data published at the State level for all States and Territories of Australia, and for the three other Territories for which data is collected — Cocos/Keeling Islands, Christmas Island and Jervis Bay. In addition the following States will be producing the State specific products listed below.

12.1 South Australia

12.1.1 Topic Cameo series

These are one to three page articles on a particular topic — income, age distribution, birthplace, labour force status, religion, families etc. In all, at least a dozen topics are covered and they contain easy to understand commentary, one or two tables of data and where applicable a graphic presentation.

Indicative release date: Various

12.1.2 South Australia In Profile

The complete Topic Cameo series will be published in this publication which will present a comprehensive profile of the various characteristics of the South Australian population.

Indicative release date: Late 1998

12.2 Western Australia

12.2.1 Counts of Population and Dwelling Characteristics by Postcode and Suburb — WA

This publication will include person counts and dwelling characteristics for WA, at the geographic levels of Postcode and Suburb.

Indicative Release Date: November 1997

12.3 Tasmania

12.3.1 Tasmanian LGAs

This series of three publications will show selected characteristics for three Tasmanian Local Government Areas of Hobart, Launceston and Burnie/Devonport Suburbs.

Indicative release date: Late 1998

12.4 Northern Territory

12.4.1 Counts by Age and Sex for Selected Areas

This will include counts by age and sex on the Indigenous and non-Indigenous population for selected areas including Indigenous communities.

Indicative release date: Mid-1997

13. CENSUS CONSULTANCY SERVICES

Where users' specialised information needs cannot be met by standard publications or products, customised data services are available through Census consultancy services. Customised Profiles, Matrixes, Geographic Data and Mapping services will be available using 1996 Census data.

Users can take advantage of the Advance Ordering Service for Customised Matrixes, which enables them to specify their data requests prior to the release of Census data. Advance Orders are processed as soon as the Census data is released, and users taking advantage of this service will therefore obtain their customised requests at the earliest possible date.

For the 1991 Census, users who had similar data requirements were able to form consortia and then share the cost of the order. This arrangement is currently under review.

13.1 Customised matrixes

The Customised Matrix Service allows clients maximum flexibility in the selection of Census variables and geographic area.

Matrixes will be available in hard copy or electronic format. 1991 Census matrixes in electronic format were provided with free CMATRIX software, which enabled clients to view, select, print and export selections from the customised matrixes. It is anticipated that 1996 Census matrixes will be available in formats suitable for a range of spreadsheets and databases. Manipulation software, operating in a Windows environment, will be enhanced and continue to be available free of charge.

The Advance Ordering Service (AOS) provides an opportunity for users to specify matrixes before processing of the 1996 Census commences. This will enable the early preparation of the computer programs necessary to produce the matrixes. These programs will then be able to be run and matrixes produced as soon as the Census data become available.

Users of this service will be invited to specify their table requirements between July 1996 and December 1996. A quote will be provided and users will be able to confirm specifications, and secure their order by paying a 25 per cent deposit.

This service proved most successful for the 1991 Census, when it was known as the Early Bird Offer. The turnaround time for delivering Advance Order matrixes is expected to be even faster for the 1996 Census due to the implementation of new technologies.

Indicative release dates:

Release 1 data	July 1997
Release 2 data	March 1998

13.2 Customised profiles

Profile data (detailed in Section 9 above) can be made available according to user-specified areas and/or component tables of the profile either in hardcopy or electronic format. Purchasers of Customised Community Profile data on electronic media will be offered formats suitable for input into a range of spreadsheets and databases.

13.3 Customised geographic data

A customised geographic data service will be available for the 1996 Census. This service will provide spatially related, historical data for Collection Districts to indicate the changes in the definition of CDs from previous censuses to the present. For example, users will be able to purchase conversion tables for specific CDs that will allow them to analyse time series data at the CD level or code their own data to CDs. Data can be requested for the whole of Australia or for specific geographic areas.

Indicative release date: Mid-1996

13.4 Customised map service

Customised reference maps will be available for client-specified areas. These maps will contain the base map (topographic) data and client-specified Census geographic boundaries. They will not contain any statistical data. An example of this type of service is a map showing the delivery area for promotional letterbox deliveries.

Customised thematic maps will be available for client-specified areas containing statistical data on a particular topic. These maps will contain base map (topographic) data and client-specified Census statistical data and boundaries. An example of this type of service is a map showing the distribution of young children in the catchment area of a proposed childcare centre.

Indicative release date:

Customised reference maps	July 1997
Thematic maps	March 1998

APPENDIX — FIRST AND SECOND RELEASE CLASSIFICATIONS

The variables that will be available from first and second release processing are set out below. Many standard variables which were available from the 1991 Census have not been included in the list below as the software to be used for the 1996 Census tabulation has the capability to derive new variables efficiently and readily as required during tabulation. Further information on the classifications which will be used in the 1996 Census can be found in *1996 Census of Population and Housing: ABS Views on Census Classifications* (2012.0).

FIRST RELEASE CLASSIFICATIONS

HOUSEHOLD DWELLING

Mnemonic	Description
BEDD	Number of bedrooms in private dwellings
DLOD	Dwelling location
DWTD	Dwelling type
FUFD	Furnished/unfurnished
HIDD	Household income derivation indicator
HIND *	Household income
HLRD	Housing loan repayment (monthly) — dollar values
HLRD01 *	Housing loan repayment (monthly) — ranges
LLDD	Landlord type
NPDD	Type of non-private dwelling
RNTD	Rent (weekly) — dollar values
RNTD01 *	Rent (weekly) — ranges
STRD	Dwelling structure
TEND	Tenure type
VEHD	Number of motor vehicles

FAMILY

There are no first release family classifications.

PERSON

Mnemonic	Description
ABLP	Aboriginal/Torres Strait Islander origin
AGEP	Age
ALSP	Age left school
BPEP	Birthplace of mother (female parent)
BPLP	Birthplace of individual
BPMP	Birthplace of father (male parent)
ENGP	Proficiency in English
ENGP01 *	Proficiency in English/Language
IMPP	Imputation flag
INCP	Income
LANP	Language spoken at home
MSTP	Registered marital status
NATP	Australian citizenship
NESP *	Non-English speaking indicator
RELP	Religion
RLNP	Relationship in non-private dwelling
SEXP	Sex

SLAUCP	SLA of usual residence census night
STEUCP	State of usual residence census night
STUP	Full/part-time student
TISP	Number of children ever born
TYPP	Type of educational institution attending
UAICP	Usual residence indicator census night 1996
YARP	Year of arrival in Australia

* These variables are derived variables that further classify the raw data collected, or combine one variable with another.

SECOND RELEASE CLASSIFICATIONS

HOUSEHOLD/DWELLING

Mnemonic	Description
CPAD	Count of persons temporarily absent from household
HHTD	Household type
MVID *	Household one year mobility indicator
MV5D *	Household five year mobility indicator

FAMILY

Mnemonic	Description
CDCAF	Count of dependent children under 15 temporarily absent
CDSAF	Count of dependent students (15-24) temporarily absent
CNDAF	Count of non-dependent children temporarily absent
FIDF *	Family income derivation indicator
FINF *	Family income (annual)
FMTF	Family type
FNOF	Family number
FRLF	Relationship between families
SPLF	Location of spouse

PERSON

Mnemonic	Description
CTPP	Child type
DZNP	Work destination zone
DZSP	Work destination study area
GNGP	Industry sector
HRSP	Hours worked
INDP	Industry
LFSP	Labour force status
MDCP *	Social marital status
OCCP	Occupation
POCUCP	Postcode of usual address census night
QALFP	Post-school educational qualification: field of study
QALLP	Post-school educational qualification: highest level
QALYP	Post-school educational qualification: year completed
RLHP	Relationship in household
RPIP	Family/household reference person indicator

UAI1P	Usual residence indicator one year ago
UAI5P	Usual residence indicator 5 years ago
SLAU1P	SLA of usual residence one year ago
SLAU5P	SLA of usual residence five years ago
STEU1P	State of usual residence one year ago
STEU5P	State of usual residence five years ago
TPTP	Method of travel to work

* These variables are derived variables that further classify the raw data collected, or combine one variable with another.



For more information . . .

The ABS publishes a wide range of statistics and other information on Australia's economic and social conditions. Details of what is available in various publications and other products can be found in the *ABS Catalogue of Publications and Products* available at all ABS Offices (see below for contact details).

Information Consultancy Service

Information tailored to special needs of clients can be obtained from the Information Consultancy Service available at ABS Offices (see Information Inquiries below for contact details).

ABS Products

A large number of ABS products is available from ABS bookshops (see below Bookshop Sales for contact details). The ABS also provides a subscription service, you can telephone the ABS Subscription Service Australia wide toll free on 1800 02 0608.

National *Dial-a-Statistic* Line

0055 86 400

(Steadycom P/L: premium rate 25c/21.4 secs.)

This number gives 24-hour access, 365 days a year, for a range of statistics, including national accounts, balance of payments, labour force and the CPI.

Electronic Services

A large range of data is available via on-line services, diskette, magnetic tape, tape cartridge and CD ROM. For more details about these electronic data services contact any ABS Office (see below) or e-mail us at:

Keylink	STAT.INFO/ABS
X.400	(C:Australia,PUB:Telememo,O:ABS,FN:STAT,SN:INFO)
Internet	stat.info@abs.telememo.au or

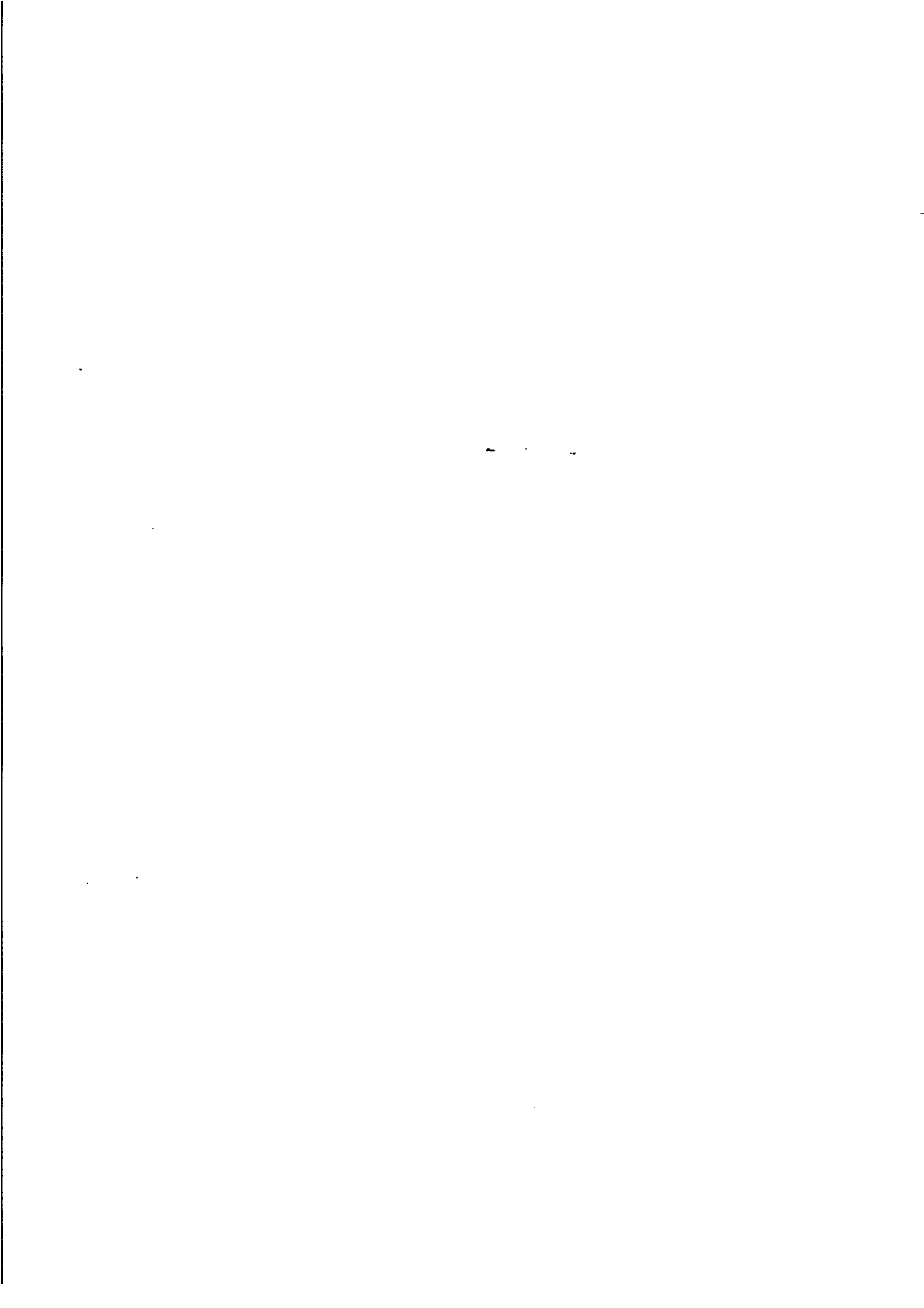
you can visit us on Internet at: <http://www.statistics.gov.au>

Sales and Inquiries

	Information Inquiries	Bookshop Sales
SYDNEY (02)	268 4611	268 4620
MELBOURNE (03)	9615 7755	9615 7755
BRISBANE (07)	3222 6351	3222 6350
PERTH (09)	360 5140	360 5307
ADELAIDE (08)	237 7100	237 7582
HOBART (002)	20 5800	20 5800
CANBERRA (06)	252 6627	207 0326
DARWIN (089)	43 2111	43 2111
National Mail Order Service (06)		2525249



Information Services, ABS, PO Box 10, Belconnen ACT 2616





2201100001968
ISBN 0 642 20741 0

Recommended retail price: \$10.00