



2005 QUEENSLAND AT A GLANCE

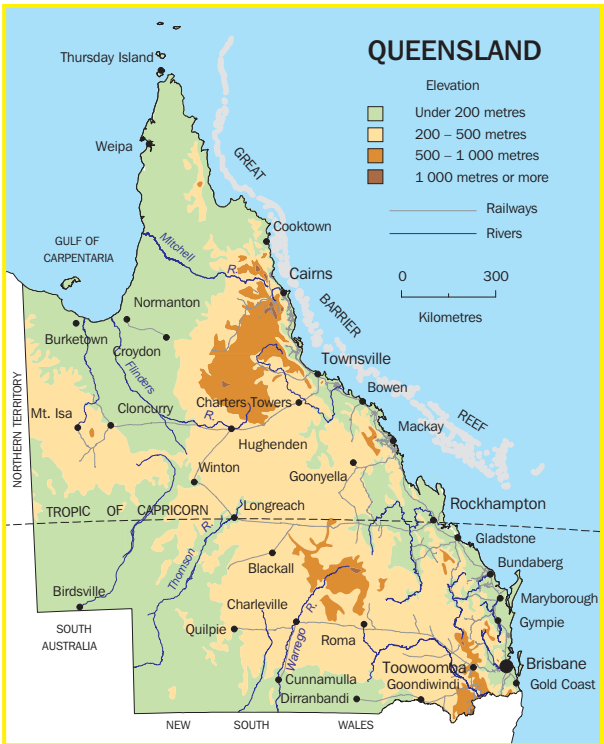


ABS catalogue no. 1312.3

Situated generally between 10° and 29° south latitude and between 138° and 154° east longitude, Queensland occupies the north-eastern portion of the Australian continent. Of the total area — 1,734,157 square kilometres — just over half is north of the Tropic of Capricorn. Of the six states of Australia, Queensland ranks second in area and third in population.

Queensland is a constituent state of the Commonwealth of Australia, and observes the Australian Constitution. While returning elected members to both upper and lower houses of the Federal Parliament, Queensland is unique in that its own State Parliament has only one house — the House of Representatives. Local government derives its powers from Acts passed by the State Parliament. The capital city is Brisbane.

Figures in this publication are subject to revision.



Source: AUSLIG 1996.

QUEENSLAND AND PROPORTION OF AUSTRALIA

Area	sq km	Date or period	Queensland	%
		1 July 2003	1 734 157	22.5
Population(p)	'000	30 June 2004	3 882.0	19.3
Births	'000	2003–04	48.8	19.2
Natural increase	'000	2003–04	24.6	20.4
Cause of death — melanoma of skin	no.	2002	195	18.5
Agricultural production				
Beef and veal	tonnes	2003–04	988 752	48.6
Mutton and lamb	tonnes	2003–04	29 509	5.3
Sugar cane(a)	'000 tonnes	2002–03	34 231	92.5
Cotton	'000 tonnes	2002–03	^ 82	22.5
Mining, value added(b)	\$m	2002–03	^ 6 525.0	18.5
Manufacturing sales and service income	\$m	2002–03	50 310.3	16.3
New houses completed	no.	2003–04	26 036	24.6
Foreign merchandise imports	\$m	2003–04	18 052.0	13.8
Foreign merchandise exports	\$m	2003–04	20 126.2	18.5
New motor vehicle sales(c)	'000	2003–04	193.2	20.6
Retail trade, turnover(d)	\$m	2003–04	38 184.1	19.8
Takings from accommodation(e)	\$m	2003–04	1 515.1	27.3
Industrial disputes	no.	2003–04	103	14.4
Working days lost	'000	2003–04	31.8	5.8

(a) Cut for crushing. (b) Excluding ANZSIC subdivision 15 (Services to Mining).

(c) Excluding motor cycles, plant, equipment and unpowered vehicles.

(d) Excluding motor vehicles, parts, petrol, etc. (e) Hotels, motels and guest houses with facilities and serviced apartments, with 15 or more rooms/units.

AVERAGE EARNINGS(a)

	2003	2004
Average weekly earnings of employees		
Males	\$802.70	\$865.10
Females	\$521.70	\$562.30

(a) August quarter.

CLIMATIC DATA, BRISBANE

Month		2003		2004	
		Dec	Mar	Jun	Sep
Mean daily maximum	°C	28.0	27.9	22.4	23.8
Mean daily minimum	°C	20.3	19.9	9.2	11.7
Rainfall, total	mm	140.4	144.8	5.6	33.4
Rain days	no.	10	12	5	7
Mean daily sunshine	hours	8.0	7.7	8.6	9.1
Windy days, over 63 km/h	days	—	2	—	—

AGRICULTURE(a)		2001-02	2002-03
Agricultural establishments(b)	no.	27 900	27 503
Area	'000 ha	141 338	139 042
Total area of crops	'000 ha	2 683	2 263
Agricultural production			
Sugar cane cut for crushing	'000 tonnes	28 250	34 231
Wheat	'000 tonnes	901	601
Barley	'000 tonnes	171	148
Grain sorghum	'000 tonnes	1 247	930
Sunflower seed	'000 tonnes	33	12
Cotton	'000 tonnes	197	^ 82
Peanuts	'000 tonnes	^ 27	^ 27
Pineapples	'000 tonnes	119	105
Bananas	'000 tonnes	266	232
Citrus fruit	'000 tonnes	86	97
Avocados	'000 tonnes	21	21
Mangoes	'000 tonnes	32	29
Livestock			
Meat cattle	'000	11 284	10 507
Milk cattle	'000	260	233
Sheep and lambs	'000	6 752	4 815
Pigs	'000	643	663
Brokers and dealers receipts of taxable wool	'000 kg	38 743	22 901
Value of agricultural production(c)			
	\$m	8 081	7 262
Crops	\$m	3 883	3 467
Livestock disposals	\$m	3 697	3 357
Livestock products(c)	\$m	501	438

(a) Establishments with an estimated value of agricultural operations of \$5,000 or more. (b) At 30 June. (c) Excluding honey and beeswax.

BUILDING		2002-03	2003-04
Dwelling units completed(a)	no.	34 148	37 235
New houses	no.	24 675	26 036
New other residential buildings	no.	8 998	10 610
<i>Value of building work completed</i>	<i>\$m</i>	<i>8 340</i>	<i>10 092</i>
New houses	\$m	3 775	4 624
New other residential buildings	\$m	1 302	1 796
Alterations and additions to residential buildings	\$m	683	867
Non-residential building	\$m	2 580	2 806
Value of work done during year	\$m	8 812	11 413

(a) Including conversions.

CONSUMER PRICE INDEX, BRISBANE(a)		2002-03	2003-04
Food	no.	149.1	153.1
Alcohol and tobacco	no.	207.3	214.1
Clothing and footwear	no.	106.6	105.7
Housing	no.	120.3	129.6
Household furnishings, supplies and services	no.	122.7	122.4
Health	no.	181.2	195.5
Transportation	no.	139.3	140.2
Communication	no.	111.9	113.5
Recreation	no.	129.6	128.0
Education	no.	231.4	242.6
Miscellaneous	no.	187.2	193.5
All groups	no.	140.7	144.8

(a) Base of each index: Year 1989-90 = 100.0.

CRIME AND JUSTICE

		2001-02	2002-03
Total police strength at 30 June(a)	no.	8 368	8 704
Proven offences in Children's Courts	no.	19 497	21 797
Summary convictions in Magistrates Courts(b)	no.	105 893	112 922
Convictions in higher courts	no.	5 787	5 272

(a) Including recruits in training. (b) Excluding ticketable offences processed through the electronic court.

Source: Queensland Police Service, Department of Communities.

DEMOGRAPHY

		2002	2003
Estimated resident population at 30 June			
Queensland	'000	3 711	3 801
Brisbane Statistical Division	'000	1 690	1 735
Bundaberg Statistical District	'000	58	59
Gladstone Statistical District	'000	40	41
Gold Coast-Tweed Statistical District (Queensland component)	'000	392	407
Rockhampton Statistical District	'000	68	68
Sunshine Coast Statistical District	'000	192	200
Townsville Statistical District	'000	138	141
Major centres — ERP(a)			
Brisbane City (state capital)	'000	918	939
Cairns City	'000	119	122
Gold Coast City	'000	439	456
Hervey Bay City	'000	44	47
Ipswich City	'000	129	132
Logan City	'000	170	171
Mackay City	'000	77	78
Redcliffe City	'000	51	52
Toowoomba City	'000	91	93
Age groups (proportion of Queensland ERP at 30 June)			
0-14 years	%	21.1	20.8
15-19 years	%	7.2	7.0
20-64 years	%	60.0	60.3
65 years or more	%	11.8	11.9

(a) Local government areas.

VITAL STATISTICS

		2002	2003
Births	no.	47 784	48 298
Rate per 1,000 mean population		12.9	12.7
Deaths	no.	23 978	22 925
Rate per 1,000 mean population		6.5	6.0
Marriages	no.	21 264	22 273
Rate per 1,000 mean population		5.8	5.9

EDUCATION

		2002	2003
Schools, August	no.	1 726	1 735
Government	no.	1 291	1 288
Non-government	no.	435	447
Students, August	'000	624.5	628.9
Government	'000	444.8	444.5
Non-government	'000	179.7	184.5

EXTERNAL MERCHANDISE TRADE

		2002-03	2003-04
Exports			
Foreign, total	\$m	21 381	20 126
Interstate, total	\$m	8 127	8 367
Imports			
Foreign, total	\$m	16 340	18 052
Interstate, total	\$m	20 683	22 739

RETAIL TRADE

		2002-03	2003-04
Turnover, total(a)	\$m	33 796	38 184

(a) Excluding motor vehicles, parts, petrol, etc.

STATE GOVERNMENT FINANCE

		2001-02	2002-03
Total GFS revenue	\$m	24 941	26 607
Total GFS expenses	\$m	25 812	26 446

LABOUR FORCE

		2003	2004
Civilian labour force, October	'000	1 967.5	2 039.3
<i>Employed</i>	'000	1 854.4	1 954.4
Males	'000	1 021.4	1 074.5
Females	'000	833.0	879.9
Unemployed	'000	113.2	84.8
Unemployment rate	%	5.8	4.2
Participation rate	%	65.1	65.8

MANUFACTURING

		2001-02	2002-03
Wages and salaries(a)	\$m	6 324.3	6 862.5
Sales and service income(b)	\$m	49 107.5	50 310.3

(a) Excluding working proprietors. (b) Including rent, leasing and hiring income.

MINING

		2001-02	2002-03
Employment at 30 June	no.	19 268	19 602
Value at mine	\$m	12 129	11 876
Black coal (saleable)	'000 tonnes	148 363	153 602
Bauxite(a)	'000 tonnes	11 276	11 251
Copper (content)	'000 tonnes	467	405
Gold (content)	kg	25 413	24 731

(a) Including beneficiated and calcined bauxite.

Source: Department of Natural Resources and Mines.

TOURIST ACCOMMODATION

		2003	2004
Licensed hotels with facilities(a)			
Establishments at 30 June	no.	170	171
Takings from accommodation(b)	\$m	655.2	711.5
Number of guest rooms at 30 June	'000	20.7	20.5
Room nights occupied(b)	'000	4 726	5 004
Room occupancy rate(b)	%	62.6	66.6
Motels and guest houses with facilities(a)			
Establishments at 30 June	no.	516	512
Takings from accommodation(b)	\$m	328.0	363.5
Number of guest rooms at 30 June	'000	18.4	18.4
Room nights occupied(b)	'000	3 918	4 167
Room occupancy rate(b)	%	58.7	61.7
Serviced apartments(a)			
Establishments at 30 June	no.	322	332
Takings from accommodation(b)	\$m	360.6	440.1
Number of guest rooms at 30 June	'000	15.4	16.0
Room nights occupied(b)	'000	3 322	3 885
Room occupancy rate(b)	%	64.6	66.6

(a) With 15 or more rooms/units. (b) Twelve months ended 30 June.

TRANSPORT

		2002-03	2003-04
New motor vehicle sales(a)	'000	164.7	193.2
State railways			
Passenger journeys	'000	47 266	49 133
Freight carried	'000 tonnes	156 450	161 895
Total earnings	\$m	2 226.8	2 305.1

(a) Excluding motor cycles, plant, equipment and unpowered vehicles.

SYMBOLS AND ABBREVIATIONS USED

ANZSIC	— Australian and New Zealand Standard Industrial Classification	p	— preliminary
°C	— degrees Celsius	RSE	— relative standard error
ERP	— estimated resident population	^	— RSE 10%–25%
GFS	— government finance statistics	—	— nil or rounded to zero
ha	— hectares	\$m	— million dollars
kg	— kilograms	sq km	— square kilometres
km/h	— kilometres per hour	no.	— number
mm	— millimetres	%	— per cent
		'000	— thousands

ACKNOWLEDGMENTS

ABS publications draw extensively on information provided freely by individuals, businesses, governments and other organisations. Their continued cooperation is very much appreciated; without it the wide range of statistics published by the ABS would not be available for general use by the community. Information received by the ABS is treated in strict confidence as required by the *Census and Statistics Act 1905*.

Cover: Cape Tribulation

Photo: John De Maio

FOR MORE INFORMATION...

- INTERNET** www.abs.gov.au The ABS web site is the best place to start for access to summary data from our latest publications, information about the ABS, advice about upcoming releases, our catalogue, and Australia Now — a statistical profile.
- LIBRARY** A range of ABS publications is available from public and tertiary libraries Australia-wide. Contact your nearest library to determine whether it has the ABS statistics you require, or visit our web site for a list of libraries.
- CPI INFOLINE** For current and historical Consumer Price Index data, call 1902 981 074 (call cost 77c per minute).
- DIAL-A-STATISTIC** For the latest figures for National Accounts, Balance of Payments, Labour Force, Average Weekly Earnings, Estimated Resident Population and the Consumer Price Index call 1900 986 400 (call cost 77c per minute).

INFORMATION SERVICE

Data that is already published and can be provided within five minutes is free of charge. Our information consultants can also help you to access the full range of ABS information — ABS user pays services can be tailored to your needs, time frame and budget. Publications may be purchased. Specialists are on hand to help you with analytical or methodological advice.

- PHONE** **1300 135 070**
- EMAIL** client.services@abs.gov.au
- FAX** 1300 135 211
- POST** Client Services, ABS, GPO Box 796, Sydney 2001

WHY NOT SUBSCRIBE?

ABS subscription services provide regular, convenient and prompt deliveries of ABS publications and products as they are released. Email delivery of monthly and quarterly publications is available.

- PHONE** 1300 366 323
- EMAIL** subscriptions@abs.gov.au
- FAX** (03) 9615 7848
- POST** Subscription Services, ABS, GPO Box 2796Y, Melbourne 3001



2131230001050
ISSN 0157-3713

© Commonwealth of Australia 2005

Produced by the Australian Bureau of Statistics